



All Units of CSUCI

UNIVERSITY PLANNING AND COORDINATING COUNCIL (UPACC)

Presented By:

William P. Cordeiro Professor of Management
Director, Martin V. Smith School of Business & Economics
Co-Chair, UPACC

Overview

In 2005, President Rush established UPACC as the campus-wide planning body for all financial, space and resource decision recommendations. UPACC has representatives from all major units of the University, including administrators, faculty, staff, students, and a community member. It is co-chaired by the Provost and a faculty member.



The Charge of UPACC states that it “makes recommendations to the President to:

- Ensure the Strategic Plan supports the Mission;
- Ensure divisional resource allocations are aligned with university strategies;
- Advise long term directions for the University
- Prioritize plans and activities;
- Review and coordinate the alignment of divisional Strategic & Tactical Plans with the Academic Master Plan;
- Determine effective implementation of all plans;
- Engage in other reviews and activities as directed by the President.”

UPACC meets every month for 1.5 hours. A pre-planning meeting is conducted monthly to assure that all relevant items are included on the Agenda. All UPACC analysis and decision-making follow a priority matrix approved by the President:

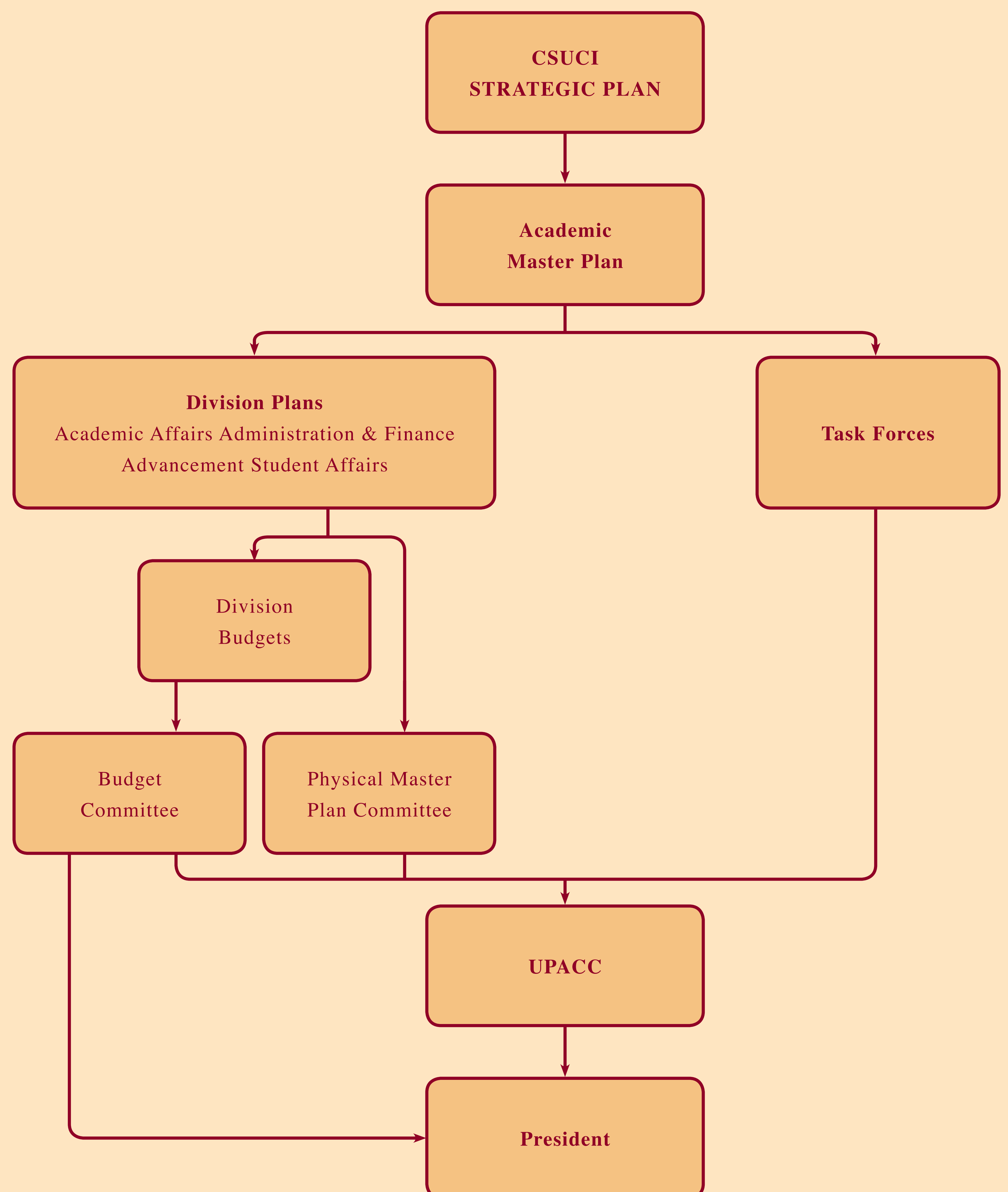
CSUCI University Planning and Coordinating Council (UPACC) Decision-Making Guidelines 2005

Priority	Supports	Priority Spending for People	Priority Spending for Assets
1	Instruction	1. Faculty 2. Administrators 3. Staff	1. Classrooms 2. Library 3. Labs 4. Equip/Supplies 5. Offices
2	Student Related Activities	1. Administrators 2. Staff	1. Student activities 2. Student living 3. Offices
3	Infrastructure	1. Administrators 2. Staff	1. Offices 2. Equipment

Strategic Plan

The (below) flow chart depicts the relationship of UPACC to other CSUCI entities. A separate “Space Allocation & Utilization Committee” meets as needed

to make recommendations to UPAC concerning use-of-space recommendations to the President.



- Establish by the President as the central planning/coordinating organization for CSUCI
- Analyzes and make recommendations to the President related to strategic priorities, space utilization and all future developments
- Active participation of all units on campus and includes community membership
- Meets every month