

Survey of Fall '04 Class Schedule Preferences

January 29, 2004

J. E. Gonzalez, Ph.D.
Director

Contents	Page
Summary	2
About the Survey	3
Survey Results	5
Figure 1. Rank-Ordered Preferences for Time of Day	10
Figure 2. Graphical Representation of Time of Day Preferences	10
Figure 3. Rank-Ordered Preferences for Day of Week	11
Figure 4. Graphical Representation of Day of Week Preferences	11
University Hour	12
Time of Day / Day of Week Analyses by Select Variables	13
Future Class Schedule Preference Surveys	31
Appendix 1	
Survey Instrument	32
Appendix 2	
Copy of Survey Poster	34

Summary

The purpose of this non-probability study was to gather information from students on their preferences for class schedules for fall '04 in order to inform the planning process associated with class scheduling. Data was collected from November 12th through December 5th, 2003. The paper-and-pencil survey was self-administered; and distribution and collection sites included seven high student-traffic areas: Academic Advising Center (BT-1301), Library, HUB, Recreation Center, Student Development Office (BT-1211), Enrollment Center, and Student Lounge (BT-1203). In the final analysis, only surveys from CSUCI students enrolled fall '03 were considered.

The final adjusted number of responses totaled 161, which is equivalent to approximately 10% of the fall '03 student population. In general terms, the distribution by gender, class-level (undergraduate lower- and upper-division), and certain majors (Art, Business, Computer Science, English, ES&RM, and Liberal Studies) for respondents, was proportional to that of CSUCI students enrolled fall '03. The study was limited in scope; and although valid, generalization of results is limited.

Preferences for Time of Day

Nearly half of respondents (49.6%) most preferred late morning classes (10:00 AM – 12:00 PM); and overall, close to three-quarters (74.4%) most preferred morning classes (8:00 AM –12:00 PM).

Two-thirds of respondents (66.4%) least preferred late evening classes (7:00 – 9:00 PM).

Preferences for Day of Week

Close to three-quarters of respondents (73.2%) most preferred 1½ hour classes on either Mondays and Wednesdays or Tuesdays and Thursdays.

Eighty-four percent of respondents indicated Saturday classes were least preferred.

University Hour

The most preferred day of the week for “university hour” was Wednesday, which was followed closely by Friday; and the most preferred time of day for university hour was 12:00 PM to 1:00 PM, followed closely by 1:00 PM to 2:00 PM.

About the Survey

Methodology

The self-administered student survey was conceived with the purpose of informing the planning process associated with class scheduling. At the time of the study, there was limited functionality in the institutional student database in terms of drawing a probability sample of currently enrolled students; and there were further limitations in the campus technology infrastructure, which reduced survey platform options to a paper-and-pencil based instrument.

In general terms, a probability study with a reasonable response rate would have allowed for generalization of survey results to be considered as representative of students at CSUCI. For illustrative purposes, in a probability study, given a population of 1,560 students, a survey response rate of 161 would have resulted in an estimated ***Margin of Error*** of ± 7.3 percentage points (at a 95% confidence-interval).

Instead, a non-probability survey methodology was utilized; and research protocols were set in place to distribute, collect, and authenticate survey responses. Seven high student-traffic areas were identified: Academic Advising Center (BT-1301), Library, HUB, Recreation Center, Student Development Office (BT-1211), Enrollment Center, and Student Lounge (BT-1203). Students were asked to provide their Social Security Numbers or Student IDs, which were used to verify current fall '03 enrollment.

After an initial surge in responses, it was determined that the original data collection period should be extended by one-week in order to maximize the final number of responses. A total of 211 surveys were collected. Of these, 25 students failed to include identifying information, 11 students were not identified as CSUCI students, and an additional 14 students did not respond to the key survey questions on class schedule preferences. The final adjusted number of respondents totaled 161—or approximately equivalent to 10% of CSUCI's fall '03 student population.

Although the distribution of survey responses by gender, class level (undergraduate lower- and upper-division), and certain majors (Art, Business, Computer Science, English, ES&RM, and Liberal Studies), are generally proportional to that of CSUCI students; no generalizations should be made from survey results in terms of their overall representative nature. Although limited in scope, survey findings are valid regarding student preferences for class schedules. This baseline information can be used for comparison purposes as the study was based on a successful research design that can be easily replicated with only minor suggested modifications.

Campus Involvement

The University Enrollment Management and Student Success Committee was instrumental in helping to craft the data collection instrument (see Appendix 1). The Marketing and Communications Division of the University Advancement Office developed a poster for placement around campus venues that was informative and that included a “look and feel” unique to the Institutional Research Office (see Appendix 2). Representatives from student government distributed surveys on the study “kick-off” day; and an article on the survey was printed in the “*Channel Islands View*” student newspaper. Also, with authorization by the Student Development Office, the University web-master, utilized the newly operational student e-mail system to contact all students and request that they participate in the survey. In the bulk e-mail, students were hot-linked to the Institutional Research Office website where the survey could be downloaded for use.

Survey Results

Student Demographics

More than two-thirds of respondents were female (68.8%); and close to three-quarters were juniors and seniors (72.5%). The distribution by gender, class-level, and certain majors for respondents, was generally proportional to that of CSUCI students* enrolled fall '03.

Gender:

Gender	N	Pct.
Female	110	68.8
Male	50	31.3
	160	100.0

Class-Level:

Class-Level	N	Pct.	Class-Level	N	Pct.
Freshmen	34	21.3	Lower-Division	39	24.4
Sophomore	5	3.1	Upper-Division	116	72.5
Junior	71	44.4	Post-Baccalaureate	5	3.1
Senior	45	28.1		160	100.0
Post-Baccalaureate	5	3.1			
	160	100.0			

Major:

Major	N	Pct.
Art	7	4.4
Biology	29	18.1
Business	19	11.9
Computer Science	6	3.8
English	13	8.1
Env. Sci. & Reso. Man. (ES&RM)	3	1.9
History	8	5.0
Liberal Studies / Concentrated Studies	10	6.3
Liberal Studies / Teaching & Learning	32	20.0
Mathematics	10	6.3
Multiple Subject Teaching Credential	2	1.3
Psychology	11	6.9
Undeclared	10	6.3
	160	100.0

*Fall 2003, CSUCI student's gender distribution was: 63.7% female, 36.3% male; class-level distribution was: 24.3% lower-division, 62.3% upper-division, and 13.4% post-baccalaureate; and major distribution was: 6.2% Art, 7.8% Biology, 17.2% Business, 4.4% Computer Science, 6.0% English, 1.9% ES&RM, 29.2% Liberal Studies, 2.6% Mathematics, and 24.7% Undeclared—which includes “undeclared” students plus Psychology and History students improperly coded in CMS/PeopleSoft for fall '03.

School and Work

More than three-quarters of respondents (84.3%) were full-time students (enrolled ≥ 12 units); and more than one-half of respondents (52.4%), worked full-time (≥ 20 hours per week).

Total Units:

Total Units	N	Pct.	Units	N	Pct.
3	2	1.3	Total Part-Time Students (< 12 Units)	25	15.7
5	1	0.6	Total Full-Time Students (> 12 Units)	134	84.3
6	7	4.4		159	100
8	1	0.6			
9	7	4.4			
10	3	1.9			
11	4	2.5			
12	39	24.5			
13	9	5.7			
14	21	13.2			
15	33	20.8			
16	9	5.7			
17	9	5.7			
18	9	5.7			
19	2	1.3			
20	2	1.3			
21	1	0.6			
	159	100.0			

Number of Hours Worked per Week:

No. Hours of Work	N	Pct.	No. Hours of Work	N	Pct.
5	1	0.9	Students that Work Part-Time (< 20 Hrs per Week)	36	25.2
7	1	0.9	Students that Work Full-Time (> 20 Hrs per Week)	75	52.4
8	3	2.7	Students that do not Work	32	22.4
9	1	0.9		143	100.0
10	8	7.2			
12	5	4.5			
14	2	1.8			
15	7	6.3			
16	5	4.5			
18	2	1.8			
19	1	0.9			
20	25	22.5			
22	1	0.9			
23	1	0.9			
24	4	3.6			
25	4	3.6			
28	1	0.9			
30	17	15.3			
35	3	2.7			
40	19	17.1			
	111	100.0			

Graduation

Although a total of 17.8% of respondents indicated that they expected to graduate by spring '04, the expected graduation dates for the remaining 82.2% of respondents ranged from fall '04 to spring '09. More than one-third of students (36.4%) expected to graduate spring '05.

Expected Graduation Date:

Semester of Graduation	N	Pct.
Fall 03	2	1.4
Spring 04	23	16.4
Fall 04	21	15.0
Spring 05	51	36.4
Fall 05	7	5.0
Spring 06	5	3.6
Fall 06	2	1.4
Spring 07	20	14.3
Fall 07	5	3.6
Spring 08	3	2.1
Spring 09	1	0.7
	140	100.0

Commute to Campus

Overall, the largest percentage of respondents (85.6% to 100%) made single round-trips to campus from Mondays through Saturdays; and their one-way commute to campus ranged from 10 minutes to slightly over one-hour. Twenty respondents indicated that they rode the bus to campus.

Commute/Bus Ride:

Avg. One-Way Commute Time in Minutes	N	Pct.
10	4	2.9
12	1	0.7
15	14	10.1
20	28	20.1
22	1	0.7
25	11	7.9
30	36	25.9
35	7	5.0
40	6	4.3
45	14	10.1
50	1	0.7
55	1	0.7
60	11	7.9
70	4	2.9
	139	100.0
Students that Ride the Bus	20	

Number of Round-Trips to Campus each Day:

No. of Daily Round-Trips to CSUCI	One	Pct.	Multiple	Pct.	Tot. Pct.
Monday	130	93.5	9	6.5	100.0
Tuesday	126	89.4	15	10.6	100.0
Wednesday	129	90.8	13	9.2	100.0
Thursday	119	85.6	20	14.4	100.0
Friday	51	100.0	0	0.0	100.0
Saturday	8	100.0	0	0.0	100.0
Sunday	0	0.0	0	0.0	100.0

Time on Campus

In general, respondents indicated that they spent at least two hours on campus once they arrived; and close to one-half of respondents (42.6% - 47.5%) were on campus for 3-5 hours on Mondays, Wednesdays and Fridays; and approximately one-third (32.9% - 24.7%) were on campus for 3-5 hours on Tuesdays and Thursdays. On Mondays, Wednesdays and Fridays approximately one-quarter of respondents (21.2% - 27.6%) were on campus more than 8-hours; and close to one-third (32.4% - 35.7%) were on campus for more than 8 hours on Tuesdays and Thursdays. Also noted below are daily earliest arrival and latest departure times.

Total Hours on Campus each Day:

Hours on Campus	Mon	%	Tue	%	Wed	%	Thu	%	Fri	%	Sat	%	Sun	%
1	2	1.5	6	4.3	7	5.0	6	4.3	0	0.0	0	0.0	0	0.0
2	14	10.2	13	9.3	10	7.1	14	10.1	4	6.1	0	0.0	0	0.0
3	26	19.0	22	15.7	19	13.5	22	15.9	14	21.2	4	44.4	0	0.0
4	16	11.7	12	8.6	22	15.6	14	10.1	12	18.2	3	33.3	0	0.0
5	23	16.8	12	8.6	19	13.5	12	8.7	5	7.6	0	0.0	0	0.0
6	12	8.8	16	11.4	14	9.9	20	14.5	3	4.5	2	22.2	0	0.0
7	10	7.3	9	6.4	11	7.8	5	3.6	14	21.2	0	0.0	0	0.0
8	1	0.7	13	9.3	10	7.1	13	9.4	5	7.6	0	0.0	0	0.0
9	11	8.0	15	10.7	11	7.8	10	7.2	6	9.1	0	0.0	0	0.0
10	6	4.4	10	7.1	4	2.8	10	7.2	3	4.5	0	0.0	0	0.0
11	5	3.6	8	5.7	6	4.3	5	3.6	0	0.0	0	0.0	0	0.0
12	7	5.1	4	2.9	3	2.1	4	2.9	0	0.0	0	0.0	0	0.0
13	2	1.5	0	0.0	4	2.8	2	1.4	0	0.0	0	0.0	0	0.0
14	2	1.5	0	0.0	1	0.7	1	0.7	0	0.0	0	0.0	0	0.0
	137	100.0	140	100.0	141	100.0	138	100.0	66	100.0	9	100.0	0	0.0
Earliest Arrival:	Mon 7 AM		Tue 7 AM		Wed 7 AM		Thu 7 AM		Fri 7 AM		Sat 9 AM			
Latest Departure:	10 PM		10 PM		7 PM		8 PM		4 PM		4 PM			

Child Care

Close to two-thirds of respondents (63.4%) indicated that they did not have children. However, there were fewer than five total responses to the question on the number of hours their child was placed in day-care in order to come to campus.

Preferences for Time of Day, Day of Week, and University Hour

Analysis:

Respondents were asked to rank-order their preferences on class scheduling as well as given a time-grid on which to mark their preferences. The time-grid was hand-tallied utilizing the following coding scheme: if one student indicated a preference for classes on Mondays from 8:00 AM TO 10:00 AM, a second student indicated a preference for classes on Mondays from 8:00 AM TO 9:00 AM, and a third student indicated a preference for classes on Mondays from 8:00 AM TO 11:00 AM; the final tabulation for these students would be reflected as: 3 tallies for classes from 8:00 AM TO 9:00 AM, 2 tallies for classes from 9:00 AM TO 10:00 AM, and 1 tally for classes from 10:00 AM TO 11:00 AM. Tallies were then graphed in a simple bar-chart. This method was used to evaluate preferences for time of day, day of week, and the “university hour.”

Preferences for Time of Day:

Nearly half of respondents (49.6%) most preferred late morning classes (10:00 AM – 12:00 PM); and overall, close to three-quarters (74.4%) most preferred morning classes (8:00 AM –12:00 PM).

Two-thirds of respondents (66.4%) least preferred late evening classes (7:00 – 9:00 PM).

Preferences for Day of Week:

Close to three-quarters of respondents (73.2%) most preferred 1½hour classes on either Mondays and Wednesdays or Tuesdays and Thursdays.

Eighty-four percent of respondents indicated Saturday classes were least preferred.

University Hour:

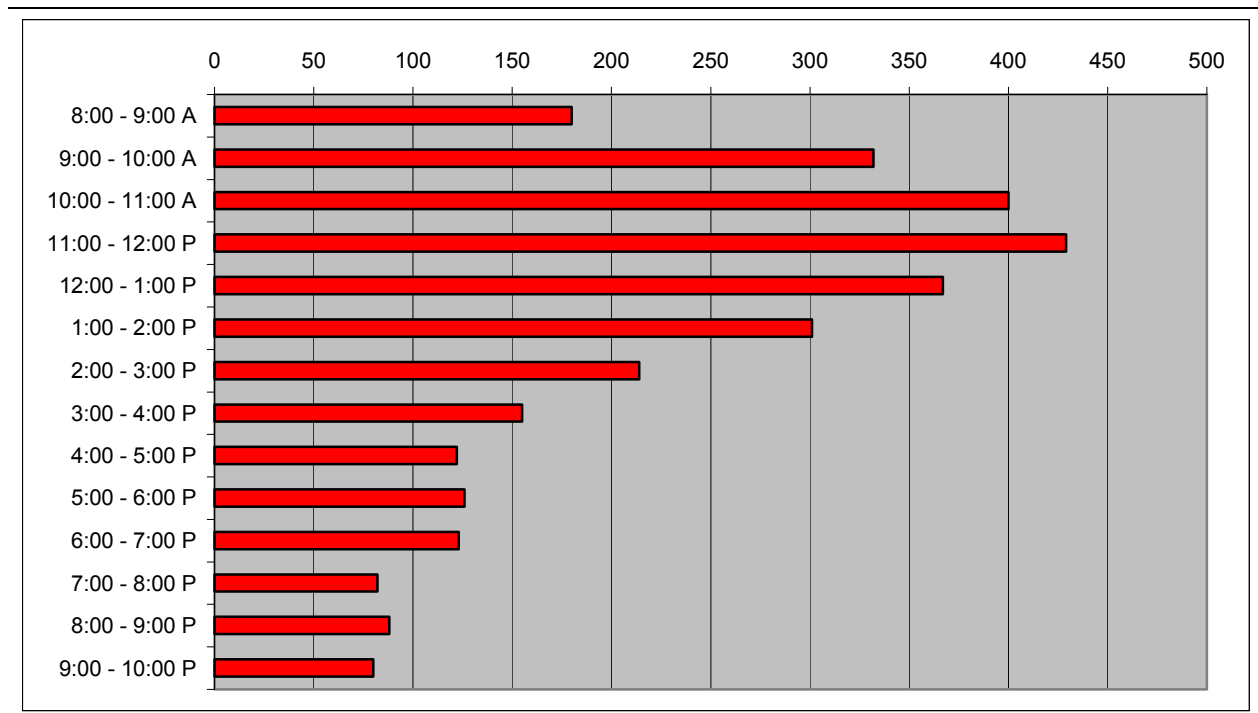
The most preferred day of the week for the “university hour” was Wednesday, which was followed closely by Friday; and the most preferred time of day for the university hour was 12:00 PM to 1:00 PM, followed closely by the 1:00 PM to 2:00 PM time period.

Preferences for Time of Day:

Figure 1
Rank-Ordered Preferences for Time of Day

Choice: Time of Day		[8-10] Early Morning	[10-12] Late Morning	[1-3] Early Afternoon	[3-5] Late Afternoon	[5-7] Early Evening	[7-9] Late Evening	Totals
1st	Pct.	24.8	49.6	10.5	3.8	6.8	4.5	100.0
	N	33	66	14	5	9	6	133
2nd	Pct.	16.8	27.5	35.9	6.9	6.1	6.9	100.0
	N	22	36	47	9	8	9	131
3rd	Pct.	12.0	3.2	32.0	36.0	10.4	6.4	100.0
	N	15	4	40	45	13	8	125
4th	Pct.	8.8	4.4	11.4	47.4	19.3	8.8	100.0
	N	10	5	13	54	22	10	114
5th	Pct.	11.9	9.3	2.5	6.8	58.5	11.0	100.0
	N	14	11	3	8	69	13	118
6th	Pct.	21.0	2.5	5.0	1.7	3.4	66.4	100.0
	N	25	3	6	2	4	79	119

Figure 2
Graphical Representation of Preferences for Time of Day

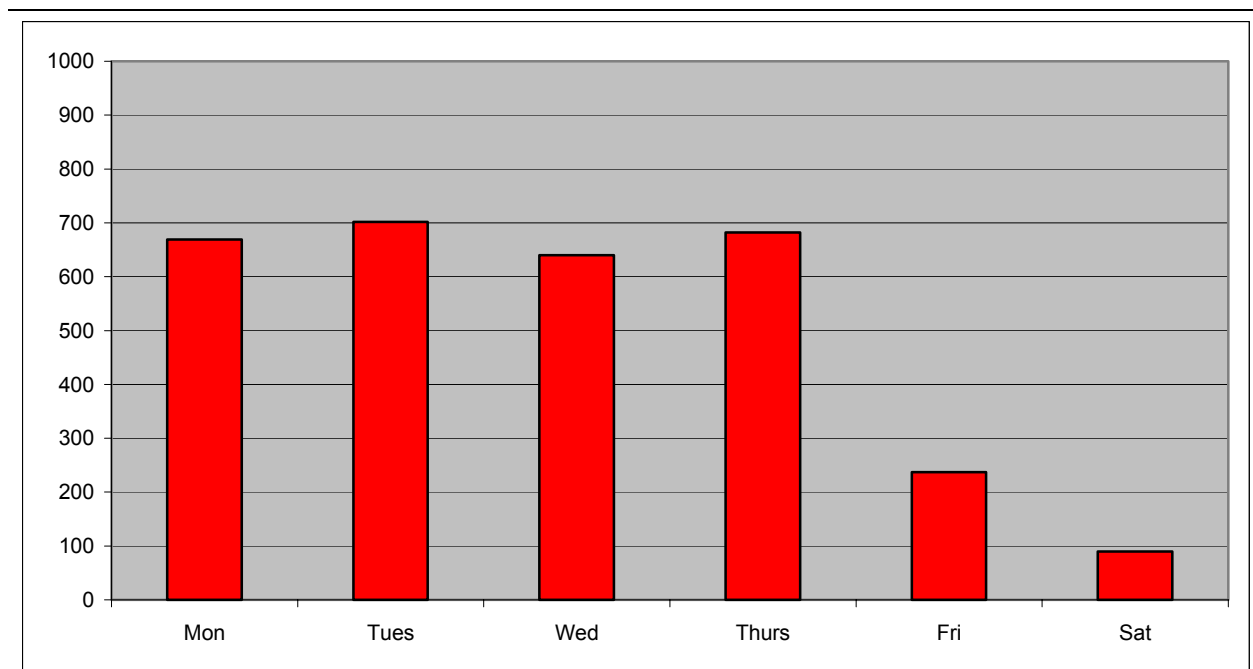


Preferences for Day of Week:

Figure 3
Rank-Ordered Preferences for Day of Week

Choice: Day of Week		1 Hr M, W, F	1½ Hr M/W or T/T	3 Hr One Day/Wk	Saturday	Totals
1st	Pct.	7.7	73.2	19.0	0.0	100.0
	N	11	104	27	0	142
2nd	Pct.	33.8	22.1	40.4	3.7	100.0
	N	46	30	55	5	136
3rd	Pct.	43.5	2.3	39.7	14.5	100.0
	N	57	3	52	19	131
4th	Pct.	12.0	0.8	3.2	84.0	100.0
	N	15	1	4	105	125

Figure 4
Graphical Representation of Preferences for Day of Week



University Hour:

On the class schedule grid, students were asked to mark their preference for a “university hour” which was defined as: “a time when no classes would be offered but instead would allow faculty, staff and students a common time that would be available for university-sponsored events.”

Close to one-half (47.2%) of respondents indicated their preferences for the university hour. A tabulation of marks suggests that the most preferred day of the week for university hour was Wednesday (27.5%), followed closely by Friday (22.1%). The most preferred time of day was 12:00 PM to 1:00 PM (32.8%), followed closely by the 1:00 PM to 2:00 PM (29.0%) time period.

Time of Day	M	Tu	W	Th	F	N	Row %
10 AM – 11 AM	1	3	2	1	0	7	5.3
11 AM – 12 PM	2	2	3	3	3	13	9.9
12 PM – 1 PM	4	5	12	7	15	43	32.8
1 PM – 2 PM	5	10	10	6	7	38	29.0
2 PM – 3 PM	3	2	4	3	1	13	9.9
3 PM – 4 PM	2	0	2	2	1	7	5.3
4 PM – 5 PM	1	1	3	1	2	8	6.1
5 PM – 6 PM	0	1	0	1	0	2	1.5
	18	24	36	24	29	131	
Column %	13.7	18.3	27.5	18.3	22.1		100.0

Time of Day / Day of Week Analyses by Select Variables

Variable	Page
Gender	14
Class-Level	15
Enrollment Status	16
Work Status	17
<u>Majors:</u>	
Art	18
Biology	19
Business	20
Computer Science	21
English	22
ES&RM	23
History	24
Liberal Studies / Concentrated Studies	25
Liberal Studies / Teaching and Learning	26
Mathematics	27
Multiple Teaching Credential	28
Psychology	29
Undeclared	30

Time of Day and Day of Week Preferences, by Select Variables...

Gender

Choice: Time of Day		Early Morning		Late Morning		Early Afternoon		Late Afternoon		Early Evening		Late Evening		Totals	
		N	Pct.	N	Pct.	N	Pct.	N	Pct.	N	Pct.	N	Pct.	N	Pct.
1st	Female	23	24.5	50	53.2	8	8.5	4	4.3	7	7.4	2	2.1	94	100.0
	Male	11	27.5	16	40.0	6	15.0	1	2.5	2	5.0	4	10.0	40	100.0
2nd	Female	14	15.4	23	25.3	38	41.8	6	6.6	4	4.4	6	6.6	91	100.0
	Male	8	20.0	13	32.5	9	22.5	3	7.5	4	10.0	3	7.5	40	100.0
3rd	Female	13	15.1	2	2.3	27	31.4	32	37.2	7	8.1	5	5.8	86	100.0
	Male	2	5.1	2	5.1	13	33.3	13	33.3	6	15.4	3	7.7	39	100.0
4th	Female	14	16.9	5	6.0	6	7.2	38	45.8	14	16.9	6	7.2	83	100.0
	Male	2	5.4	0	0.0	7	18.9	16	43.2	8	21.6	4	10.8	37	100.0
5th	Female	10	12.2	6	7.3	2	2.4	4	4.9	51	62.2	9	11.0	82	100.0
	Male	4	11.1	5	13.9	1	2.8	4	11.1	18	50.0	4	11.1	36	100.0
6th	Female	14	16.9	1	1.2	5	6.0	1	1.2	3	3.6	59	71.1	83	100.0
	Male	11	30.6	2	5.6	1	2.8	1	2.8	1	2.8	20	55.6	36	100.0

Choice: Day of Week		1 Hr M, W, F		1½ Hr M/W or T/T		3 Hr 1 Day/Wk		Sat		Totals	
		N	Pct.	N	Pct.	N	Pct.	N	Pct.	N	Pct.
1st	Female	7	7.1	69	70.4	22	22.4	0	0.0	98	100.0
	Male	4	9.3	34	79.1	5	11.6	0	0.0	43	100.0
2nd	Female	31	33.7	22	23.9	35	38.0	4	4.3	92	100.0
	Male	15	34.9	8	18.6	19	44.2	1	2.3	43	100.0
3rd	Female	39	44.3	2	2.3	34	38.6	13	14.8	88	100.0
	Male	17	40.5	1	2.4	18	42.9	6	14.3	42	100.0
4th	Female	9	10.6	1	1.2	4	4.7	71	83.5	85	100.0
	Male	6	15.0	0	0.0	0	0.0	34	85.0	40	100.0

Class-Level (Undergraduate Lower- and Upper-Division, and Post-Baccalaureate)

Choice: Time of Day		Early Morning		Late Morning		Early Afternoon		Late Afternoon		Early Evening		Late Evening		Totals	
		N	Pct.	N	Pct.	N	Pct.	N	Pct.	N	Pct.	N	Pct.	N	Pct.
1st	Lower-Div	6	18.2	24	72.7	3	9.1	0	0.0	0	0.0	0	0.0	33	100.0
	Upper-Div	25	26.3	40	42.1	11	11.6	5	5.3	8	8.4	6	6.3	95	100.0
	Post-Bac	2	50.0	2	50.0	0	0.0	0	0.0	0	0.0	0	0.0	4	100.0
2nd	Lower-Div	7	21.9	8	25.0	17	53.1	0	0.0	0	0.0	0	0.0	32	100.0
	Upper-Div	14	14.9	26	27.7	29	30.9	9	9.6	8	8.5	8	8.5	94	100.0
	Post-Bac	1	25.0	2	50.0	1	25.0	0	0.0	0	0.0	0	0.0	4	100.0
3rd	Lower-Div	6	19.4	0	0.0	11	35.5	12	38.7	2	6.5	0	0.0	31	100.0
	Upper-Div	9	9.9	4	4.4	28	30.8	32	35.2	11	12.1	7	7.7	91	100.0
	Post-Bac	0	0.0	0	0.0	1	33.3	1	33.3	0	0.0	1	33.3	3	100.0
4th	Lower-Div	4	13.8	0	0.0	0	0.0	17	58.6	7	24.1	1	3.4	29	100.0
	Upper-Div	12	14.0	5	5.8	12	14.0	36	41.9	15	17.4	6	7.0	86	100.0
	Post-Bac	0	0.0	0	0.0	1	33.3	1	33.3	0	0.0	1	33.3	3	100.0
5th	Lower-Div	2	6.5	0	0.0	1	3.2	2	6.5	20	64.5	6	19.4	31	100.0
	Upper-Div	12	14.3	11	13.1	2	2.4	6	7.1	46	54.8	7	8.3	84	100.0
	Post-Bac	0	0.0	0	0.0	0	0.0	0	0.0	3	100.0	0	0.0	3	100.0
6th	Lower-Div	7	21.9	0	0.0	1	3.1	0	0.0	2	6.3	22	68.8	32	100.0
	Upper-Div	17	20.2	3	3.6	5	6.0	1	1.2	2	2.4	56	66.7	84	100.0
	Post-Bac	1	33.3	0	0.0	0	0.0	1	33.3	0	0.0	1	33.3	3	100.0

Choice: Day of Week		1 Hr M, W, F		1 ½ Hr M/W or T/T		3 Hr 1 Day/Wk		Sat		Totals	
		N	Pct.	N	Pct.	N	Pct.	N	Pct.	N	Pct.
1st	Lower-Div	5	13.9	30	83.3	1	2.8	0	0.0	36	100.0
	Upper-Div	6	5.9	71	70.3	24	23.8	0	0.0	101	100.0
	Post-Bac	0	0.0	2	50.0	2	50.0	0	0.0	4	100.0
2nd	Lower-Div	14	40.0	5	14.3	15	42.9	1	2.9	35	100.0
	Upper-Div	32	33.3	23	24.0	37	38.5	4	4.2	96	100.0
	Post-Bac	0	0.0	2	50.0	2	50.0	0	0.0	4	100.0
3rd	Lower-Div	13	38.2	0	0.0	18	52.9	3	8.8	34	100.0
	Upper-Div	42	45.2	3	3.2	34	36.6	14	15.1	93	100.0
	Post-Bac	2	66.7	0	0.0	0	0.0	1	33.3	3	100.0
4th	Lower-Div	2	5.9	1	2.9	1	2.9	30	88.2	34	100.0
	Upper-Div	11	12.6	0	0.0	3	3.4	73	83.9	87	100.0
	Post-Bac	1	20.0	0	0.0	0	0.0	4	80.0	5	100.0

Enrollment Status: Full-Time (≥ 12 Hours) or Part-Time (< 12 Hours)

Choice: Time of Day		Early Morning		Late Morning		Early Afternoon		Late Afternoon		Early Evening		Late Evening		Totals	
		N	Pct.	N	Pct.	N	Pct.	N	Pct.	N	Pct.	N	Pct.	N	Pct.
1st	Part-Time	3	12.5	7	29.2	3	12.5	1	4.2	7	29.2	3	12.5	24	100.0
	Full-Time	30	27.8	58	53.7	11	10.2	4	3.7	2	1.9	3	2.8	108	100.0
2nd	Part-Time	3	13.0	4	17.4	6	26.1	3	13.0	1	4.3	6	26.1	23	100.0
	Full-Time	19	17.8	32	29.9	40	37.4	6	5.6	7	6.5	3	2.8	107	100.0
3rd	Part-Time	2	10.0	1	5.0	3	15.0	8	40.0	4	20.0	2	10.0	20	100.0
	Full-Time	13	12.5	3	2.9	37	35.6	36	34.6	9	8.7	6	5.8	104	100.0
4th	Part-Time	3	16.7	1	5.6	5	27.8	6	33.3	2	11.1	1	5.6	18	100.0
	Full-Time	13	12.9	4	4.0	8	7.9	48	47.5	19	18.8	9	8.9	101	100.0
5th	Part-Time	2	11.1	4	22.2	1	5.6	1	5.6	9	50.0	1	5.6	18	100.0
	Full-Time	11	11.1	7	7.1	2	2.0	7	7.1	60	60.6	12	12.1	99	100.0
6th	Part-Time	5	27.8	1	5.6	1	5.6	1	5.6	0	0.0	10	55.6	18	100.0
	Full-Time	20	20.0	2	2.0	5	5.0	1	1.0	4	4.0	68	68.0	100	100.0

Choice: Day of Week		1 Hr M, W, F		1½ Hr M/W or T/T		3 Hr 1 Day/Wk		Sat		Totals	
		N	Pct.	N	Pct.	N	Pct.	N	Pct.	N	Pct.
1st	Part-Time	0	0.0	15	62.5	9	37.5	0	0.0	24	100.0
	Full-Time	11	9.4	88	75.2	18	15.4	0	0.0	117	100.0
2nd	Part-Time	8	36.4	5	22.7	7	31.8	2	9.1	22	100.0
	Full-Time	37	32.7	25	22.1	48	42.5	3	2.7	113	100.0
3rd	Part-Time	6	30.0	1	5.0	8	40.0	5	25.0	20	100.0
	Full-Time	51	46.4	2	1.8	43	39.1	14	12.7	110	100.0
4th	Part-Time	6	31.6	0	0.0	0	0.0	13	68.4	19	100.0
	Full-Time	9	8.6	1	1.0	4	3.8	91	86.7	105	100.0

Work Status: Full-Time (≥ 20 Hours per Week) or Part-Time (< 20 Hours per Week)

Choice: Time of Day		Early Morning		Late Morning		Early Afternoon		Late Afternoon		Early Evening		Late Evening		Totals	
		N	Pct.	N	Pct.	N	Pct.	N	Pct.	N	Pct.	N	Pct.	N	Pct.
1st	Part-Time	10	30.3	18	54.5	4	12.1	1	3.0	0	0.0	0	0.0	33	100.0
	Full-Time	14	23.0	23	37.7	6	9.8	3	4.9	9	14.8	6	9.8	61	100.0
	Not Work	5	20.0	17	68.0	2	8.0	1	4.0	0	0.0	0	0.0	25	100.0
2nd	Part-Time	6	18.2	11	33.3	13	39.4	3	9.1	0	0.0	0	0.0	33	100.0
	Full-Time	11	18.6	14	23.7	15	25.4	4	6.8	7	11.9	8	13.6	59	100.0
	Not Work	5	20.0	6	24.0	11	44.0	2	8.0	1	4.0	0	0.0	25	100.0
3rd	Part-Time	5	15.2	2	6.1	13	39.4	9	27.3	2	6.1	2	6.1	33	100.0
	Full-Time	5	9.1	2	3.6	17	30.9	21	38.2	7	12.7	3	5.5	55	100.0
	Not Work	2	8.7	0	0.0	6	26.1	8	34.8	4	17.4	3	13.0	23	100.0
4th	Part-Time	2	6.3	1	3.1	2	6.3	17	53.1	9	28.1	1	3.1	32	100.0
	Full-Time	7	13.5	3	5.8	8	15.4	23	44.2	6	11.5	5	9.6	52	100.0
	Not Work	5	21.7	1	4.3	3	13.0	8	34.8	3	13.0	3	13.0	23	100.0
5th	Part-Time	6	18.8	0	0.0	1	3.1	2	6.3	21	65.6	2	6.3	32	100.0
	Full-Time	5	10.0	9	18.0	2	4.0	3	6.0	26	52.0	5	10.0	50	100.0
	Not Work	1	4.3	1	4.3	0	0.0	3	13.0	14	60.9	4	17.4	23	100.0
6th	Part-Time	3	9.4	0	0.0	0	0.0	1	3.1	1	3.1	27	84.4	32	100.0
	Full-Time	12	24.0	3	6.0	4	8.0	0	0.0	1	2.0	30	60.0	50	100.0
	Not Work	7	29.2	0	0.0	2	8.3	1	4.2	1	4.2	13	54.2	24	100.0

Choice: Day of Week		1 Hr M, W, F		1½ Hr M/W or T/T		3 Hr 1 Day/Wk		Sat		Totals	
		N	Pct.	N	Pct.	N	Pct.	N	Pct.	N	Pct.
1st	Part-Time	5	14.7	27	79.4	2	5.9	0	0.0	34	100.0
	Full-Time	4	6.1	45	68.2	17	25.8	0	0.0	66	100.0
	Not Work	2	7.4	20	74.1	5	18.5	0	0.0	27	100.0
2nd	Part-Time	18	52.9	6	17.6	9	26.5	1	2.9	34	100.0
	Full-Time	16	25.8	16	25.8	27	43.5	3	4.8	62	100.0
	Not Work	7	26.9	5	19.2	13	50.0	1	3.8	26	100.0
3rd	Part-Time	10	29.4	0	0.0	22	64.7	2	5.9	34	100.0
	Full-Time	27	46.6	2	3.4	17	29.3	12	20.7	58	100.0
	Not Work	14	56.0	1	4.0	8	32.0	2	8.0	25	100.0
4th	Part-Time	1	3.1	1	3.1	1	3.1	29	90.6	32	100.0
	Full-Time	10	18.2	0	0.0	2	3.6	43	78.2	55	100.0
	Not Work	2	8.0	0	0.0	1	4.0	22	88.0	25	100.0

Majors...

Art

Choice: Time of Day		Early Morning	Late Morning	Early Afternoon	Late Afternoon	Early Evening	Late Evening	Totals
1st	Pct.	28.6	28.6	0.0	14.3	14.3	14.3	100.0
	N	2	2	0	1	1	1	7
2nd	Pct.	0.0	28.6	42.9	0.0	14.3	14.3	100.0
	N	0	2	3	0	1	1	7
3rd	Pct.	16.7	16.7	16.7	33.3	0.0	16.7	100.0
	N	1	1	1	2	0	1	6
4th	Pct.	16.7	0.0	33.3	16.7	33.3	0.0	100.0
	N	1	0	2	1	2	0	6
5th	Pct.	0.0	16.7	0.0	33.3	33.3	16.7	100.0
	N	0	1	0	2	2	1	6
6th	Pct.	66.7	0.0	0.0	0.0	33.3	0.0	100.0
	N	2	0	0	0	1	0	3

Choice: Day of Week		1 Hr M, W, F	1½ Hr M/W or T/T	3 Hr 1 Day/Wk	Sat	Totals
1st	Pct.	0.0	57.1	42.9	0.0	100.0
	N	0	4	3	0	7
2nd	Pct.	28.6	42.9	28.6	0.0	100.0
	N	2	3	2	0	7
3rd	Pct.	50.0	0.0	33.3	16.7	100.0
	N	3	0	2	1	6
4th	Pct.	50.0	0.0	0.0	50.0	100.0
	N	1	0	0	1	2

Biology

Choice: Time of Day		Early Morning	Late Morning	Early Afternoon	Late Afternoon	Early Evening	Late Evening	Totals
1st	Pct.	33.3	61.9	4.8	0.0	0.0	0.0	100.0
	N	7	13	1	0	0	0	21
2nd	Pct.	23.8	33.3	38.1	4.8	0.0	0.0	100.0
	N	5	7	8	1	0	0	21
3rd	Pct.	9.5	0.0	47.6	38.1	4.8	0.0	100.0
	N	2	0	10	8	1	0	21
4th	Pct.	4.8	0.0	4.8	57.1	23.8	9.5	100.0
	N	1	0	1	12	5	2	21
5th	Pct.	4.8	4.8	4.8	0.0	71.4	14.3	100.0
	N	1	1	1	0	15	3	21
6th	Pct.	23.8	0.0	0.0	0.0	0.0	76.2	100.0
	N	5	0	0	0	0	16	21

Choice: Day of Week		1 Hr M, W, F	1½ Hr M/W or T/T	3 Hr 1 Day/Wk	Sat	Totals
1st	Pct.	13.6	86.4	0.0	0.0	100.0
	N	3	19	0	0	22
2nd	Pct.	45.5	13.6	40.9	0.0	100.0
	N	10	3	9	0	22
3rd	Pct.	38.1	0.0	52.4	9.5	100.0
	N	8	0	11	2	21
4th	Pct.	0.0	0.0	9.5	90.5	100.0
	N	0	0	2	19	21

Business

Choice: Time of Day		Early Morning	Late Morning	Early Afternoon	Late Afternoon	Early Evening	Late Evening	Totals
1st	Pct.	11.8	47.1	11.8	0.0	17.6	11.8	100.0
	N	2	8	2	0	3	2	17
2nd	Pct.	6.3	12.5	43.8	6.3	6.3	25.0	100.0
	N	1	2	7	1	1	4	16
3rd	Pct.	14.3	7.1	14.3	57.1	7.1	0.0	100.0
	N	2	1	2	8	1	0	14
4th	Pct.	21.4	0.0	7.1	28.6	35.7	7.1	100.0
	N	3	0	1	4	5	1	14
5th	Pct.	28.6	21.4	0.0	7.1	42.9	0.0	100.0
	N	4	3	0	1	6	0	14
6th	Pct.	14.3	0.0	14.3	0.0	0.0	71.4	100.0
	N	2	0	2	0	0	10	14

Choice: Day of Week		1 Hr M, W, F	1½ Hr M/W or T/T	3 Hr 1 Day/Wk	Sat	Totals
1st	Pct.	0.0	76.5	23.5	0.0	100.0
	N	0	13	4	0	17
2nd	Pct.	26.7	13.3	60.0	0.0	100.0
	N	4	2	9	0	15
3rd	Pct.	53.3	0.0	26.7	20.0	100.0
	N	8	0	4	3	15
4th	Pct.	20.0	0.0	0.0	80.0	100.0
	N	3	0	0	12	15

Computer Science

Choice: Time of Day		Early Morning	Late Morning	Early Afternoon	Late Afternoon	Early Evening	Late Evening	Totals
1st	Pct.	20.0	60.0	20.0	0.0	0.0	0.0	100.0
	N	1	3	1	0	0	0	5
2nd	Pct.	20.0	40.0	40.0	0.0	0.0	0.0	100.0
	N	1	2	2	0	0	0	5
3rd	Pct.	0.0	0.0	40.0	40.0	20.0	0.0	100.0
	N	0	0	2	2	1	0	5
4th	Pct.	20.0	0.0	0.0	40.0	20.0	20.0	100.0
	N	1	0	0	2	1	1	5
5th	Pct.	0.0	0.0	0.0	20.0	60.0	20.0	100.0
	N	0	0	0	1	3	1	5
6th	Pct.	25.0	0.0	0.0	0.0	0.0	75.0	100.0
	N	1	0	0	0	0	3	4

Choice: Day of Week		1 Hr M, W, F	1½ Hr M/W or T/T	3 Hr 1 Day/Wk	Sat	Totals
1st	Pct.	16.7	83.3	0.0	0.0	100.0
	N	1	5	0	0	6
2nd	Pct.	50.0	16.7	33.3	0.0	100.0
	N	3	1	2	0	6
3rd	Pct.	33.3	0.0	66.7	0.0	100.0
	N	2	0	4	0	6
4th	Pct.	0.0	0.0	0.0	0.0	0.0
	N	0	0	0	0	0

English

Choice: Time of Day		Early Morning	Late Morning	Early Afternoon	Late Afternoon	Early Evening	Late Evening	Totals
1st	Pct.	0.0	58.3	8.3	8.3	8.3	16.7	100.0
	N	0	7	1	1	1	2	12
2nd	Pct.	16.7	0.0	50.0	16.7	16.7	0.0	100.0
	N	2	0	6	2	2	0	12
3rd	Pct.	18.2	0.0	9.1	45.5	18.2	9.1	100.0
	N	2	0	1	5	2	1	11
4th	Pct.	13.3	46.7	6.7	20.0	6.7	6.7	100.0
	N	2	7	1	3	1	1	15
5th	Pct.	20.0	20.0	10.0	0.0	40.0	10.0	100.0
	N	2	2	1	0	4	1	10
6th	Pct.	36.4	9.1	9.1	0.0	0.0	45.5	100.0
	N	4	1	1	0	0	5	11

Choice: Day of Week		1 Hr M, W, F	1½ Hr M/W or T/T	3 Hr 1 Day/Wk	Sat	Totals
1st	Pct.	0.0	53.8	46.2	0.0	100.0
	N	0	7	6	0	13
2nd	Pct.	23.1	30.8	30.8	15.4	100.0
	N	3	4	4	2	13
3rd	Pct.	30.8	15.4	23.1	30.8	100.0
	N	4	2	3	4	13
4th	Pct.	36.4	0.0	0.0	63.6	100.0
	N	4	0	0	7	11

Environmental Science & Resource Management (ES&RM)

Choice: Time of Day		Early Morning	Late Morning	Early Afternoon	Late Afternoon	Early Evening	Late Evening	Totals
1st	Pct.	0.0	0.0	0.0	0.0	100.0	0.0	100.0
	N	0	0	0	0	1	0	1
2nd	Pct.	0.0	0.0	0.0	0.0	0.0	100.0	100.0
	N	0	0	0	0	0	1	1
3rd	Pct.	0.0	100.0	0.0	0.0	0.0	0.0	100.0
	N	0	1	0	0	0	0	1
4th	Pct.	0.0	0.0	100.0	0.0	0.0	0.0	100.0
	N	0	0	1	0	0	0	1
5th	Pct.	0.0	0.0	0.0	100.0	0.0	0.0	100.0
	N	0	0	0	1	0	0	1
6th	Pct.	100.0	0.0	0.0	0.0	0.0	0.0	100.0
	N	1	0	0	0	0	0	1

Choice: Day of Week		1 Hr M, W, F	1½ Hr M/W or T/T	3 Hr 1 Day/Wk	Sat	Totals
1st	Pct.	0.0	100.0	0.0	0.0	100.0
	N	0	2	0	0	2
2nd	Pct.	0.0	0.0	100.0	0.0	100.0
	N	0	0	1	0	1
3rd	Pct.	100.0	0.0	0.0	0.0	100.0
	N	1	0	0	0	1
4th	Pct.	0.0	0.0	0.0	100.0	100.0
	N	0	0	0	1	1

History

Choice: Time of Day		Early Morning	Late Morning	Early Afternoon	Late Afternoon	Early Evening	Late Evening	Totals
1st	Pct.	57.1	42.9	0.0	0.0	0.0	0.0	100.0
	N	4	3	0	0	0	0	7
2nd	Pct.	28.6	57.1	14.3	0.0	0.0	0.0	100.0
	N	2	4	1	0	0	0	7
3rd	Pct.	14.3	0.0	42.9	0.0	14.3	28.6	100.0
	N	1	0	3	0	1	2	7
4th	Pct.	0.0	0.0	28.6	57.1	0.0	14.3	100.0
	N	0	0	2	4	0	1	7
5th	Pct.	0.0	0.0	0.0	16.7	83.3	0.0	100.0
	N	0	0	0	1	5	0	6
6th	Pct.	0.0	0.0	0.0	16.7	16.7	66.7	100.0
	N	0	0	0	1	1	4	6

Choice: Day of Week		1 Hr M, W, F	1½ Hr M/W or T/T	3 Hr 1 Day/Wk	Sat	Totals
1st	Pct.	0.0	71.4	28.6	0.0	100.0
	N	0	5	2	0	7
2nd	Pct.	28.6	28.6	42.9	0.0	100.0
	N	2	2	3	0	7
3rd	Pct.	57.1	0.0	14.3	28.6	100.0
	N	4	0	1	2	7
4th	Pct.	16.7	0.0	0.0	83.3	100.0
	N	1	0	0	5	6

Liberal Studies / Concentrated Studies

Choice: Time of Day		Early Morning	Late Morning	Early Afternoon	Late Afternoon	Early Evening	Late Evening	Totals
1st	Pct.	30.0	70.0	0.0	0.0	0.0	0.0	100.0
	N	3	7	0	0	0	0	10
2nd	Pct.	20.0	20.0	50.0	10.0	0.0	0.0	100.0
	N	2	2	5	1	0	0	10
3rd	Pct.	20.0	10.0	40.0	20.0	10.0	0.0	100.0
	N	2	1	4	2	1	0	10
4th	Pct.	0.0	0.0	10.0	70.0	10.0	10.0	100.0
	N	0	0	1	7	1	1	10
5th	Pct.	10.0	0.0	0.0	0.0	80.0	10.0	100.0
	N	1	0	0	0	8	1	10
6th	Pct.	20.0	0.0	0.0	0.0	0.0	80.0	100.0
	N	2	0	0	0	0	8	10

Choice: Day of Week		1 Hr M, W, F	1½ Hr M/W or T/T	3 Hr 1 Day/Wk	Sat	Totals
1st	Pct.	11.1	55.6	33.3	0.0	100.0
	N	1	5	3	0	9
2nd	Pct.	33.3	44.4	22.2	0.0	100.0
	N	3	4	2	0	9
3rd	Pct.	55.6	0.0	44.4	0.0	100.0
	N	5	0	4	0	9
4th	Pct.	0.0	0.0	0.0	100.0	100.0
	N	0	0	0	9	9

Liberal Studies / Teaching & Learning

Choice: Time of Day		Early Morning	Late Morning	Early Afternoon	Late Afternoon	Early Evening	Late Evening	Totals
1st	Pct.	39.1	30.4	8.7	13.0	4.3	4.3	100.0
	N	9	7	2	3	1	1	23
2nd	Pct.	17.4	39.1	17.4	4.3	17.4	4.3	100.0
	N	4	9	4	1	4	1	23
3rd	Pct.	0.0	0.0	47.8	30.4	13.0	8.7	100.0
	N	0	0	11	7	3	2	23
4th	Pct.	18.2	4.5	9.1	50.0	13.6	4.5	100.0
	N	4	1	2	11	3	1	22
5th	Pct.	19.0	14.3	4.8	4.8	52.4	4.8	100.0
	N	4	3	1	1	11	1	21
6th	Pct.	4.8	9.5	9.5	0.0	0.0	76.2	100.0
	N	1	2	2	0	0	16	21

Choice: Day of Week		1 Hr M, W, F	1½ Hr M/W or T/T	3 Hr 1 Day/Wk	Sat	Totals
1st	Pct.	11.5	76.9	11.5	0.0	100.0
	N	3	20	3	0	26
2nd	Pct.	36.0	16.0	44.0	4.0	100.0
	N	9	4	11	1	25
3rd	Pct.	44.0	4.0	44.0	8.0	100.0
	N	11	1	11	2	25
4th	Pct.	8.7	0.0	4.3	87.0	100.0
	N	2	0	1	20	23

Mathematics

Choice: Time of Day		Early Morning	Late Morning	Early Afternoon	Late Afternoon	Early Evening	Late Evening	Totals
1st	Pct.	12.5	25.0	50.0	0.0	12.5	0.0	100.0
	N	1	2	4	0	1	0	8
2nd	Pct.	0.0	37.5	25.0	25.0	0.0	12.5	100.0
	N	0	3	2	2	0	1	8
3rd	Pct.	14.3	0.0	0.0	57.1	28.6	0.0	100.0
	N	1	0	0	4	2	0	7
4th	Pct.	50.0	16.7	16.7	16.7	0.0	0.0	100.0
	N	3	1	1	1	0	0	6
5th	Pct.	16.7	16.7	0.0	0.0	33.3	33.3	100.0
	N	1	1	0	0	2	2	6
6th	Pct.	16.7	0.0	0.0	0.0	33.3	50.0	100.0
	N	1	0	0	0	2	3	6

Choice: Day of Week		1 Hr M, W, F	1½ Hr M/W or T/T	3 Hr 1 Day/Wk	Sat	Totals
1st	Pct.	10.0	90.0	0.0	0.0	100.0
	N	1	9	0	0	10
2nd	Pct.	50.0	10.0	40.0	0.0	100.0
	N	5	1	4	0	10
3rd	Pct.	10.0	0.0	50.0	40.0	100.0
	N	1	0	5	4	10
4th	Pct.	33.3	0.0	11.1	55.6	100.0
	N	3	0	1	5	9

Multiple Teaching Credential

Choice: Time of Day		Early Morning	Late Morning	Early Afternoon	Late Afternoon	Early Evening	Late Evening	Totals
1st	Pct.	50.0	0.0	50.0	0.0	0.0	0.0	100.0
	N	1	0	1	0	0	0	2
2nd	Pct.	0.0	100.0	0.0	0.0	0.0	0.0	100.0
	N	0	1	0	0	0	0	1
3rd	Pct.	0.0	0.0	0.0	0.0	0.0	0.0	0.0
	N	0	0	0	0	0	0	0
4th	Pct.	0.0	0.0	0.0	0.0	0.0	0.0	0.0
	N	0	0	0	0	0	0	0
5th	Pct.	0.0	0.0	0.0	0.0	0.0	0.0	0.0
	N	0	0	0	0	0	0	0
6th	Pct.	0.0	0.0	0.0	0.0	0.0	0.0	0.0
	N	0	0	0	0	0	0	0

Choice: Day of Week		1 Hr M, W, F	1½ Hr M/W or T/T	3 Hr 1 Day/Wk	Sat	Totals
1st	Pct.	0.0	50.0	50.0	0.0	100.0
	N	0	1	1	0	2
2nd	Pct.	0.0	100.0	0.0	0.0	100.0
	N	0	1	0	0	1
3rd	Pct.	0.0	0.0	0.0	0.0	0.0
	N	0	0	0	0	0
4th	Pct.	0.0	0.0	0.0	0.0	0.0
	N	0	0	0	0	0

Psychology

Choice: Time of Day		Early Morning	Late Morning	Early Afternoon	Late Afternoon	Early Evening	Late Evening	Totals
1st	Pct.	18.2	54.5	18.2	0.0	9.1	0.0	100.0
	N	2	6	2	0	1	0	11
2nd	Pct.	18.2	27.3	36.4	9.1	0.0	9.1	100.0
	N	2	3	4	1	0	1	11
3rd	Pct.	9.1	0.0	27.3	45.5	9.1	9.1	100.0
	N	1	0	3	5	1	1	11
4th	Pct.	10.0	10.0	0.0	40.0	20.0	20.0	100.0
	N	1	1	0	4	2	2	10
5th	Pct.	0.0	0.0	0.0	10.0	70.0	20.0	100.0
	N	0	0	0	1	7	2	10
6th	Pct.	40.0	0.0	10.0	0.0	0.0	50.0	100.0
	N	4	0	1	0	0	5	10

Choice: Day of Week		1 Hr M, W, F	1½ Hr M/W or T/T	3 Hr 1 Day/Wk	Sat	Totals
1st	Pct.	9.1	54.5	36.4	0.0	100.0
	N	1	6	4	0	11
2nd	Pct.	18.2	36.4	36.4	9.1	100.0
	N	2	4	4	1	11
3rd	Pct.	66.7	0.0	33.3	0.0	100.0
	N	6	0	3	0	9
4th	Pct.	0.0	0.0	0.0	100.0	100.0
	N	0	0	0	9	9

Undeclared

Choice: Time of Day		Early Morning	Late Morning	Early Afternoon	Late Afternoon	Early Evening	Late Evening	Totals
1st	Pct.	0.0	100.0	0.0	0.0	0.0	0.0	100.0
	N	0	8	0	0	0	0	8
2nd	Pct.	37.5	0.0	62.5	0.0	0.0	0.0	100.0
	N	3	0	5	0	0	0	8
3rd	Pct.	37.5	0.0	25.0	25.0	0.0	12.5	100.0
	N	3	0	2	2	0	1	8
4th	Pct.	0.0	0.0	12.5	62.5	25.0	0.0	100.0
	N	0	0	1	5	2	0	8
5th	Pct.	12.5	0.0	0.0	0.0	75.0	12.5	100.0
	N	1	0	0	0	6	1	8
6th	Pct.	33.3	0.0	0.0	33.3	0.0	33.3	100.0
	N	1	0	0	1	0	1	3

Choice: Day of Week		1 Hr M, W, F	1½ Hr M/W or T/T	3 Hr 1 Day/Wk	Sat	Totals
1st	Pct.	11.1	77.8	11.1	0.0	100.0
	N	1	7	1	0	9
2nd	Pct.	33.3	11.1	44.4	11.1	100.0
	N	3	1	4	1	9
3rd	Pct.	44.4	0.0	44.4	11.1	100.0
	N	4	0	4	1	9
4th	Pct.	11.1	11.1	0.0	77.8	100.0
	N	1	1	0	7	9

Future Class Schedule Preference Surveys

Given the importance of this matter, a class schedule preference study should be re-issued every several years in order to gauge change in campus climate on this issue. Refinements to the original study and instrumentation should include the following:

Future surveys should be probability-based studies with samples drawn from the student database—stratified by meaningful demographic groupings.

Until a preferred survey methodology is established, the survey platform should be both paper and pencil-based as well as web-based.

Since the child-care question did not elicit a satisfactory number of responses from students, this item should either be modified or eliminated from the class schedule preference survey instrument. Also since responses on the “time-grid” of class schedule preferences closely paralleled responses to the rank-ordered questions on class schedule preferences, only one of these two types of questions should be included in the survey as these questions are redundant. The time-grid question, however, is labor-intensive in terms of data analysis.

Appendix 1
Class Schedule Preferences Survey Instrument

--	--	--	--	--	--	--	--	--

[Survey Cannot be Processed Without SSN or Student ID]

CSUCI Student Survey of Fall '04 Class Schedule Preferences
November 12th – 26th

Dear CSUCI Student:

In this survey, we would like to know your **Fall '04 Class Schedule Preferences**. Your participation in this survey is completely voluntary, and your responses will be kept completely confidential. However, we cannot process your survey without your Social Security Number (SSN) or Student ID, which will only be used to verify that you are currently enrolled as a CSUCI student. The information that you provide will be summarized and used to inform the decision-making process associated with **class scheduling**. Results of this survey will be posted on the CSUCI website. For more information about this and other surveys, please contact the Office of Institutional Research. Thank you in advance for your participation in this survey.

Gender: <input type="radio"/> Male <input type="radio"/> Female	Class Level: <input type="radio"/> Freshman <input type="radio"/> Sophomore <input type="radio"/> Junior <input type="radio"/> Senior <input type="radio"/> Post-Baccalaureate	Units Enrolled, Fall '03: ___ No. of Units Employment Status: ___ No. Hours per Week	Major/Program: <input type="radio"/> Art <input type="radio"/> Biology <input type="radio"/> Business <input type="radio"/> Computer Science <input type="radio"/> English <input type="radio"/> Env. Sci & Reso. Man. (ESRM) <input type="radio"/> History <input type="radio"/> Liberal Studies: ___ Teaching & Learning; ___ Concentrated Studies <input type="radio"/> Mathematics <input type="radio"/> Psychology <input type="radio"/> Single-Subject Teaching Credential <input type="radio"/> Multiple-Subject Teaching Credential <input type="radio"/> Education Specialist <input type="radio"/> Undeclared	Intended Graduation Date: ___ / ___ / ___ (Semester / Year)
--	--	---	--	---

Each time that you drive to campus, your commute takes: ___:___ (Indicate hours: minutes). Actually, you ride the bus to campus instead ____.

Each day of the week, how many trips do you make to campus? (Indicate number of trips to campus each day of the week):

Monday ___, Tuesday ___, Wednesday ___, Thursday ___, Friday ___, Saturday ___, Sunday ___.

Each day of the week, whether you make one trip or multiple trips, at what time do you first arrive on campus and at what time do you finally depart from campus?
(Indicate your arrival and departure times in hours: minutes each day of the week):

Arrive: Monday __: __, Tuesday __: __, Wednesday __: __, Thursday __: __, Friday __: __, Saturday __: __, Sunday __: __.
Depart: Monday __: __, Tuesday __: __, Wednesday __: __, Thursday __: __, Friday __: __, Saturday __: __, Sunday __: __.

If you place your child in day-care in order to come to campus, how many hours and at what time of day is your child in day care? Actually, you don't have kids ____.
(Indicate hours and circle AM/PM).

Monday __: __ AM/PM, Tuesday __: __ AM/PM, Wednesday __: __ AM/PM, Thursday __: __ AM/PM, Friday __: __ AM/PM, Saturday __: __ AM/PM, Sunday __: __ AM/PM.

[Survey Continues on Back Page]

Universities typically offer classes during certain times of day.
Below, rank-order your preference for class times.

Where: 1 = 1st Choice
2 = 2nd Choice
3 = 3rd Choice
4 = 4th Choice
5 = 5th Choice
6 = 6th Choice.

___ Early Mornings (8 AM — 10 AM)
___ Late Mornings (10 AM — 12 PM)
___ Early Afternoons (1 PM — 3 PM)
___ Late Afternoons (3 PM — 5 PM)
___ Early Evenings (5 PM — 7 PM)
___ Late Evenings (7 PM — 9 PM)

Universities typically offer courses on certain days of the week.
Below, rank-order your preference for class days.

Where: 1 = 1st Choice
2 = 2nd Choice
3 = 3rd Choice
4 = 4th Choice

___ 1 hour each day: Mon, Wed & Fri
___ 1-1/2 hours on Mon & Wed or Tues & Thurs
___ 3 hour block on any one-day of the week
___ Saturday classes

On the grid below, please mark the schedule that you would PREFER for Fall '04.

EXAMPLE

Hours	Mon	Tues	Wed	Thurs	Fri	Sat
8:00						
9:00						
10:00						
11:00						
12:00						
1:00						
2:00						
3:00						
4:00						
5:00						
6:00						
7:00						
8:00						
9:00						

PREFERED, FALL '04

Hours	Mon	Tues	Wed	Thurs	Fri	Sat
8:00						
9:00						
10:00						
11:00						
12:00						
1:00						
2:00						
3:00						
4:00						
5:00						
6:00						
7:00						
8:00						
9:00						

The University is considering reserving one hour per week to be known as the "university hour" which is a time when no classes would be offered, but instead would allow faculty, staff and students a common time that would be available for university-sponsored events. If you are interested, on the grid above, please indicate your preferred day and time for a university hour.

RETURN SURVEYS ONLY to an Official Collection Site: Academic Advising Center (BT 1301); Library (Front Desk); HUB (Staff Area); Recreation Center (Staff Area); Student Development (BT 1211); Enrollment Center (Front Desk); or Student Lounge (Office in BT 1203)

Appendix 2
Copy of Survey Poster

SURVEY



Student Class Schedule Preferences Fall 2004

Survey Dates: Nov 12th - Dec 5th

**Surveys can be picked up and returned at official
distribution and collection sites:**

**Academic Advising Center (BT 1301)
Enrollment Center (Front Desk)
HUB (Staff Area)
Library (Front Desk)
Recreation Center (Staff Area)
Student Development Office (BT 1211)
Student Lounge (Office in BT 1203)**

Survey conducted by the Institutional Research Office: 437-8979

Survey results will be posted at www.csuci.edu