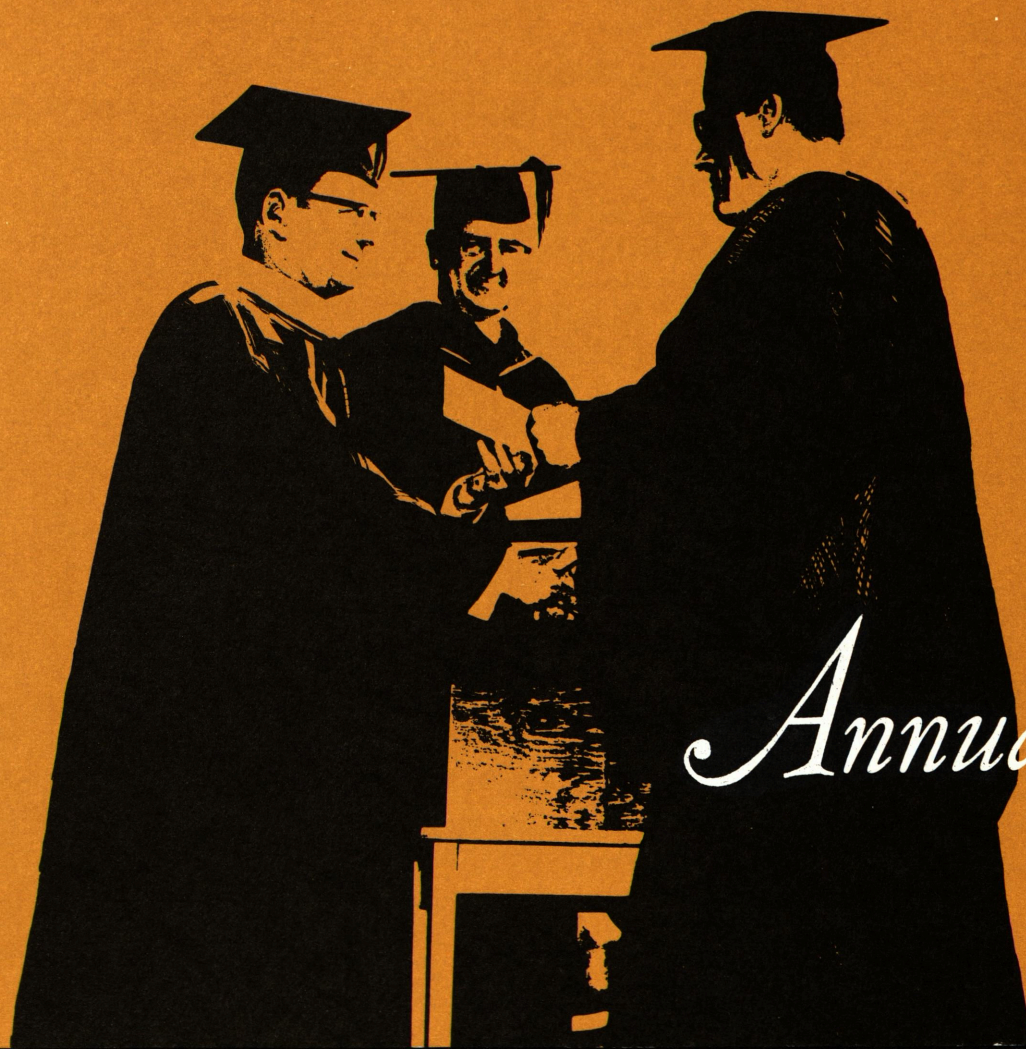


CALIFORNIA STATE POLYTECHNIC COLLEGE SAN LUIS OBISPO, CALIFORNIA

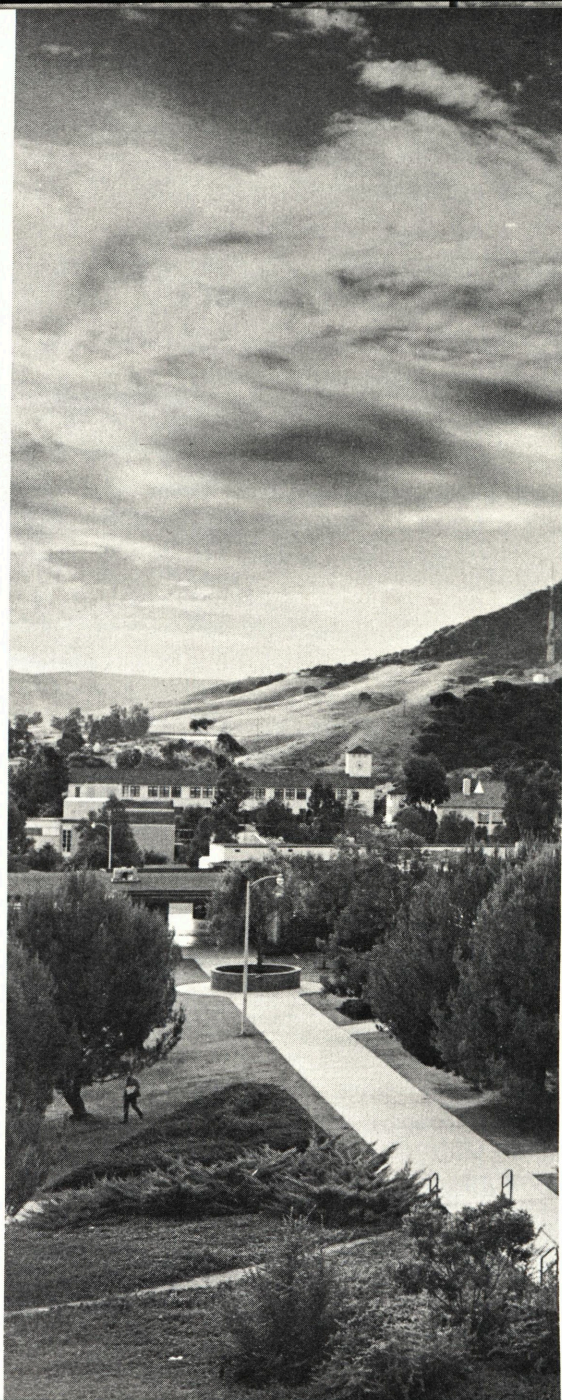


*Annual Report*  
1967-68









# *Annual Report — 1967-68*

CALIFORNIA STATE POLYTECHNIC COLLEGE  
SAN LUIS OBISPO







NOTES ON THE ILLUSTRATIONS — President Robert E. Kennedy confers a Cal Poly degree in the cover illustration by Audio-Visual artist Bob Reynolds. The many facets of a college are reflected in the photos (in order of appearance) of the view from the Library, the enduring style of the former Administration building, shade and sunlight along the Science building breezeway, the Mustang Marching Band in action, and the solemnity of the annual Commencement.



"Growth" is the word which most accurately describes developments during 1967-68 at California State Polytechnic College, San Luis Obispo. Colleges in recent years have come to regard as almost routine substantial increases in such areas as enrollment, library holdings, faculty, budgets, and placement of graduates. Cal Poly had growth in all these areas during 1967-68.

Enrollment reached a new high of 8,370. The library added 35,226 bound volumes, 22,718 collection items (including curriculum materials, teaching aids, and microforms) and 239 new periodical titles.

The number of faculty members increased to 497 from 470 in the preceding year. State budgeted expenditures also increased from \$9,894,951 to \$11,576,449. Employer contacts on campus with students totalled 6,661—an all-time high. Starting salaries offered to graduates also reached new highs.

Increases in two other areas are of special significance. These were in programs of study and in facilities. Nine additional curricula were approved to be instituted in the fall quarter 1968, four leading to bachelor's degrees and five to master's degrees. Academic master planning completed during the year looks toward rapid expansion in graduate work. It calls for 12 more curricula leading to the bachelor's degree and 13 new programs of graduate study at the master's level by 1973.

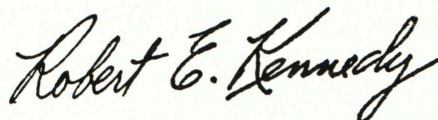
Ten building projects of a total value in excess of \$11,000,000 have been completed during the year or are under construction. Master planning of construction has

four projects totalling \$1,313,000 funded and ready for construction. Eleven other projects with a dollar value of \$21.5 million are in planning stages.

An important change in academic administrative organization saw architecture advance to school status during the school year. The former Architecture and Architectural Engineering Department reached an enrollment of 931 and became the largest in the United States. The new school offers curricula in architecture, architectural engineering, and city and regional planning.

In this period of student unrest Cal Poly is particularly proud of the attitudes and conduct of its student body during the past year. The campus had only one small activist group which held three orderly demonstrations that did not interfere with the functions of the college.

Progress was made this year in the use of the consultative processes with students and with faculty and staff. Students were given a representative on each of the three administrative councils of the college. The Faculty-Staff Council reorganized during the year, setting up a staff senate and a faculty senate independently. Under this reorganization consultation with the administration can be achieved more rapidly and effectively.



Robert E. Kennedy  
*President*



# HIGHLIGHTS – 1967-68

## Curriculum

Four curricula leading to the bachelor's degree and five to the master's were approved by the Chancellor's Office for addition this year. The bachelor's degree curricula included those for bachelor of science degrees in child development, natural resources management, and city and regional planning, and a bachelor of arts curriculum in English. The bachelor of arts in English replaced the former bachelor of science program in that field. New master's degree programs included the master of arts in English and in mathematics, and the master of science in home economics, applied mathematics, and physical education.

The academic master planning would add eight bachelor's degree programs and four master's degree programs during 1969-70 pending approval from the Office of the Chancellor. The bachelor's programs include six for the bachelor of science and two for the bachelor of arts. Bachelor of science programs for which approval is being sought include those in industrial arts, computer sciences, construction engineering, civil engineering, engineering sciences, and engineering technology. The bachelor of arts curricula requested are in speech and history. Master's programs requested to start in the fall of 1969 are the master of science in agriculture and in industrial arts as well as master of international agriculture, and master of engineering.

Further academic planning on through 1973 looks forward to addition of four more bachelor's programs and nine other curricula leading to the master's degree. Bachelor of science programs requested include those in animal technology, statistics, and agricultural sciences. The bachelor of arts program in political science also is requested.

The master's programs which the college seeks to add include the master of business administration and the master of science in food processing, chemistry, architectural engineering, construction engineering, landscape architecture, industrial technology, and the master of city planning.

## Building Program

Ten projects with a total dollar value of \$11,339,110 currently are under construction. The Yosemite Residence Hall, which will house 600 additional students, is to be available in mid-September. The College Union, with 106,000 square feet which will cost more than \$3 million, has a completion date in the Fall, 1969. Money for this building is all non-state funds paid by student fees and El Corral student store operations. The Biological Sciences Building, with five auditorium-type lecture rooms and nine laboratories, is 70 percent complete. The outdoor Olympic-type swimming pool will be in use this fall.

A Computer Science Building, which will not only house the computer-data processing center but also 12 general purpose lecture rooms and six drafting laboratories, is scheduled for completion in May, 1969. The

Ornamental Horticulture Unit is being relocated directly east of the Thoroughbred Horse Unit because dormitories are to occupy the Grand Avenue site which Ornamental Horticulture has been using. Other projects under construction include parking and utilities.

Four projects with a dollar value of some \$1,313,000 are funded and ready for construction. Included is relocation of the physical education track which is to be directly south of the tennis courts behind the Men's Gymnasium. The track will be the full nine lanes of rubberized asphalt with an infield large enough for a football field. Three other projects are for roads and utilities.

Eleven projects are in active planning. Most of these have been requested for 1969-70 funding. Their total cost will exceed \$21.5 million. This long-range portion of the construction program includes a new Women's Gymnasium, another Engineering Building, a new Library replacing the present one which will be remodeled for other instructional use, an outdoor swimming and training pool, relocation of the baseball field, 600 more residence hall spaces, and two classroom buildings.

The larger classroom building would provide specialized instructional capacity for home economics and space for mathematics and social sciences. A smaller building is planned for specialized facilities in the biological sciences and chemistry. A dining complex to serve an increased enrollment is planned for Grand Avenue. It will include two eating areas, one a free-choice cafeteria and the other a conventional restaurant.



## Instructional Materials Program

With continued support of matching federal funds from the Vocational Education Act of 1963, the Instructional Materials Program produced additional teaching aids for occupational and vocational education.

Twenty sets of teaching aids were developed during the year including filmstrips, teachers' guides, student manuals, and workbooks on vocational subjects. These teaching aids and instructional materials were distributed to some 2,000 schools throughout the country on a non-profit basis by the College Foundation.

In response to requests from California vocational agriculture teachers, the program was expanded with additional federal VEA funds in 1967-68 to provide for an agriculture education media consultant who has helped them make more effective use of instructional materials and teaching aids.

## Placement

Campus recruiting activities by employers reached an all-time high in 1967-68. Four hundred sixty-six employers sent 713 representatives to the college, who made 6,661 student contacts.

Average starting monthly salaries offered to June, 1968, graduates of California State Polytechnic College were higher for every kind of engineering than they were the previous year. The average offers received by electronic engineers in the class, for example, were \$92 a month more than in 1967.

The average offers to graduating seniors in the various engineering categories were as follows: electronic, \$787; metallurgical, \$776; mechanical, \$752; environmental, \$759; industrial, \$755; electrical, \$773; aeronautical, \$748; industrial technology, \$737.

Graduates of the School of Architecture were offered \$756, a \$60 monthly increase compared with offers in 1967. Business administration graduates received average offers of \$689 and mathematics graduates, \$746.

## International Education

Under contracts with the United States Agency for International Development, Department of State, the college maintains programs in Zambia, Thailand, and Guatemala.

In Zambia a staff of three experts work directly with the Ministry of Agriculture in its program to increase the agricultural productivity of the country. The Cal Poly experts work with the Ministry's extension program, agricultural organizations, and individual farmers. They are concerned with farm management, irrigation, and farm structures, respectively.

A Cal Poly team of five supplemented by three short-term specialists is assisting the Ministry of Education of the Royal Thai Government in development and improvement of its agricultural teacher training program. The team, which is located at Bangpra Teacher Training College, also works with

Thai counterparts from the college in providing assistance for the upgrading of 14 secondary agricultural schools.

In Guatemala Cal Poly has three programs. They involve the National School of Agriculture at Barcena, mobile school and agricultural marketing. Two full-time Cal Poly people assist the National School which has as its mission the preparation of Guatemalans to serve in the government's extension program as well as in private industry.

The mobile school is an experiment in providing educational training to rural Guatemalan farmers at four widely separated locations to which groups of students ranging in age from 16 to 70 are transported, fed and housed for three days of intensive training each month. Cal Poly provides a full-time staff of two who are assisting the Guatemalan extension service in the development of teaching materials, lesson plans, and necessary logistical support.

In the marketing project Cal Poly works directly with a marketing section of the Guatemala Ministry of Agriculture in improving its marketing program. One full-time staffer and several short-term consultants are involved.

Instruction was given on campus to 422 international students from 62 countries this year. Included were 92 sponsored by AID.

Sixteen Cal Poly students attended universities abroad this year under auspices of the California State College International Program.



Table I. TOTAL ENROLLMENT BY MAJOR,  
Fall 1960 — Fall 1967

Major	1960	1961	1962	1963	1964	1965	1966	1967
<b>Agriculture</b>								
Ag. Bus. Mgmt.	77	133	182	225	252	279	312	337
Ag. Ed.	23	22	22	17	47	32	30	61
Ag. Engr.	102	100	91	87	97	93	82	97
Mech. Ag.	113	95	102	107	98	106	107	120
Animal Husb.	364	410	437	446	434	438	450	425
Crops	110	100	109	130	128	129	116	117
Fruit Prod.	30	40	40	39	47	38	38	29
Dairy	96	97	100	95	95	96	100	100
Farm Mgmt.	126	114	133	135	160	158	149	137
Food Proc.	4	19	21	29	27	46	57	55
Orn. Hort.	66	71	81	98	109	110	108	134
Poultry Ind.	43	39	32	40	38	49	58	52
Soil Science	76	73	68	65	73	70	67	53
<b>TOTALS</b>	<b>1230</b>	<b>1313</b>	<b>1418</b>	<b>1513</b>	<b>1605</b>	<b>1644</b>	<b>1674</b>	<b>1717</b>
<b>Applied Arts</b>								
Business	167	204	293	331	387	484	553	615
Educ., Elem.	350	430	513	323	197	56	1	96
Educ., Sec.	47	98	154	252	225	313	356	329
English	20	4	1	76	183	268	306	319
Home Ec.	174	237	311	336	377	462	531	664
Journalism	55	73	69	72	57	63	64	81
Physical Ed.	142	151	141	146	168	194	220	242
Printing	107	107	110	133	128	123	123	105
Tech. Arts	102	105	131	131	140	212	244	253
<b>TOTALS</b>	<b>1164</b>	<b>1409</b>	<b>1723</b>	<b>1800</b>	<b>1862</b>	<b>2175</b>	<b>2398</b>	<b>2704</b>
<b>Applied Sciences</b>								
Biochemistry	22	27	17	19	23	19	28	42
Biological Sci.	143	165	201	242	268	278	318	350
Mathematics	152	175	181	200	238	290	309	331
Physics & Chem.	57	56	71	62	75	—	—	—
Physics	—	—	—	—	—	57	58	60
Chemistry	—	—	—	—	—	45	51	70
Social Sci.	138	230	259	393	514	543	565	603
<b>TOTALS</b>	<b>512</b>	<b>653</b>	<b>729</b>	<b>916</b>	<b>1118</b>	<b>1232</b>	<b>1329</b>	<b>1456</b>
<b>Architecture</b>	<b>356</b>	<b>356</b>	<b>461</b>	<b>554</b>	<b>693</b>	<b>705</b>	<b>818</b>	<b>931</b>
<b>Engineering</b>								
Aeronautical	185	175	180	202	216	214	225	260
Electrical	124	130	148	143	159	140	132	125
Electronic	503	491	496	516	574	470	463	492
Environmental	79	73	85	104	109	105	125	147
Industrial	102	104	112	101	111	101	119	112
Mechanical	415	350	375	395	398	397	408	363
Weld. & Met.	29	40	41	45	36	42	49	48
<b>TOTALS</b>	<b>1793</b>	<b>1719</b>	<b>1898</b>	<b>2060</b>	<b>2296</b>	<b>2174</b>	<b>2339</b>	<b>1547</b>
Unknown	14	7	33	21	23	—	—	—
<b>Campus Totals</b>	<b>4713</b>	<b>5101</b>	<b>5801</b>	<b>6310</b>	<b>6904</b>	<b>7225</b>	<b>7740</b>	<b>8355</b>

Table II. ENROLLMENT OF REGULAR STUDENTS BY CLASS LEVEL,  
LIMITED STUDENTS, AND MEN AND WOMEN STUDENTS,  
Fall 1958 — Fall 1967

Part A.—Enrollment of Regular Students by Class Level, & % Lower Div.

Year (Fall)	Fresh	Soph	Junior	Senior	Under-Grads	% Lower Division	Grads.	Total Reg.
1958	1487	1147	782	459	3875	68.0	52	3938
1959	1269	1380	998	482	4129	64.2	44	4210
1960	1438	1357	1000	654	4449	62.8	48	4497
1961	1736	1359	930	764	4789	64.6	49	4838
1962	1872	1661	1015	846	5394	65.5	68	5462
1963	1901	1761	1218	940	5820	62.9	88	5908
1964	2244	1301	1386	1481	6412	55.3	110	6522
1965	2233	1502	1356	1633	6724	55.5	131	6855
1966	2059	1629	1567	1993	7248	50.9	171	7419
1967	2088	1700	1662	2255	7705	49.2	238	7943

Part B.—Enrollment Status

Fall	Individuals			% Limtd.
	Reg.	Limited	Total	
1958	3938	244	4182	5.8
1959	4210	267	4477	6.0
1960	4497	216	4713	4.6
1961	4838	263	5101	5.2
1962	5462	339	5801	5.8
1963	5908	402	6310	6.4
1964	6522	382	6904	5.5
1965	6855	370	7225	5.1
1966	7419	321	7740	4.1
1967	7943	412	8355	4.9

Part C.—Enrollment by Sex

Fall	Men	Women	Total	% Wom.
1958	3684	498	4182	11.9
1959	3827	650	4477	14.5
1960	3886	827	4713	17.5
1961	3999	1102	5101	21.6
1962	4386	1415	5801	24.4
1963	4778	1532	6310	24.3
1964	5211	1693	6904	24.5
1965	5348	1877	7225	26.0
1966	5653	2087	7740	27.0
1967	5946	2409	8355	28.8

Table III. SCHOLARSHIP AWARDS ADMINISTERED BY COLLEGE

	Number	Amount
School of Agriculture		
Leopold E. Wrasse	80	\$40,000
Other agricultural awards	52	16,700
School of Applied Arts	7	2,800
School of Engineering	27	6,475
Major or school not specified	12	2,200
Athletic awards	63	14,971
	<b>241</b>	<b>\$83,146</b>



Table IV. AVERAGE SCHOLASTIC APTITUDE TEST SCORES OF  
FIRST-TIME FRESHMEN, BY MAJOR,  
Fall 1963 and Fall 1967

Major	Fall 1963				Fall 1966			
	No. of Students	Average SAT Scores			No. of Students	Average SAT Scores		
		Verbal	Math	Total		Verbal	Math	Total
ABM	29	421	457	878	19	465	512	977
AE	8	445	546	991	10	503	543	1046
MA	4	392	472	864	6	435	468	904
AH	49	406	437	843	35	492	491	984
Crops	9	402	452	854	5	420	475	896
FP	4	396	425	821	1	654	406	1060
Dairy	4	334	339	723	2	485	491	976
FM	20	402	487	889	9	498	514	1012
Food P.	0	—	—	—	2	448	549	997
OH	7	433	553	986	10	503	516	1019
PI	3	445	505	950	2	467	631	1098
SS	5	480	463	943	1	568	591	1159
TOTALS	142	413	462	875	102	484	506	991
Bus	53	450	483	933	67	475	509	985
Eng	24	439	426	865	46	489	482	972
HE	80	435	442	877	116	468	482	951
Jour	13	490	429	919	15	534	535	1069
PE	32	415	430	845	31	449	449	898
Pr	24	423	457	885	4	419	501	920
TA	14	394	479	873	2	484	590	1075
TOTALS	240	436	451	887	281	474	489	963
B. Chem.	2	448	456	904	8	555	541	1097
Bio. Sci.	54	461	469	930	55	499	506	1005
Math	39	474	582	1056	47	502	608	1111
Physics	12	464	504	968	8	501	597	1098
Chem.	12	464	504	968	12	561	630	1191
Soc. Sci.	104	458	438	896	69	499	509	1009
TOTALS	211	462	476	938	199	506	544	1050
Arch	117	449	544	992	122	506	587	1094
Aero	46	499	590	1089	51	488	593	1082
Environ	11	410	499	909	6	422	570	992
EE	23	473	575	1048	26	481	586	1068
EL	101	498	579	1077	77	497	605	1103
IE	13	466	566	1032	9	513	615	1128
ME	61	468	572	1040	46	494	607	1101
Metall.	5	388	428	816	1	546	665	1211
TOTALS	260	457	544	1002	216	492	606	1098
College	970	452	502	954	920	490	542	1032

Note: Excludes first-time freshmen in two-year technical programs in Agriculture.

Table V. GEOGRAPHIC ORIGIN OF STUDENTS  
Fall 1960 and Fall 1967

Counties of Origin	1960		1967		Counties of Origin	1960		1967	
	No.	%	No.	%		No.	%	No.	%
Alameda	178	3.8	289	3.4	Sacramento	110	2.3	156	1.9
Amador	3	0.1	4	—	San Benito	12	0.2	22	0.3
Butte	8	0.2	27	0.3	S. Bernardino	115	2.4	161	1.9
Calaveras	2	—	8	0.1	San Diego	107	2.3	157	1.9
Colusa	4	0.1	15	0.2	San Francisco	79	1.7	105	1.2
Contra Costa	126	2.7	338	4.0	San Joaquin	46	1.0	138	1.6
Del Norte	3	0.1	2	—	S. L. Obispo	47	10.0	1180	14.1
El Dorado	14	0.3	13	0.2	San Mateo	129	2.7	256	3.0
Fresno	82	1.7	148	1.8	Sta. Barbara	263	5.6	573	6.8
Glenn	11	0.2	13	0.2	Santa Clara	133	2.8	432	5.2
Humboldt	30	0.6	39	0.5	Santa Cruz	47	1.0	75	0.9
Imperial	31	0.6	30	0.4	Shasta	14	0.3	24	0.3
Inyo	14	0.3	10	0.1	Sierra	1	—	0	—
Kern	168	3.6	365	4.4	Siskiyou	11	0.2	12	0.1
Kings	38	0.8	97	1.2	Solano	42	0.9	61	0.7
Lake	12	0.2	6	0.1	Sonoma	40	0.8	73	0.9
Lassen	11	0.2	7	0.1	Stanislaus	67	1.4	113	1.4
Los Angeles	946	20.1	1450	17.3	Sutter	13	0.3	30	0.4
Madera	27	0.6	34	0.4	Tehama	10	0.2	9	0.1
Marin	37	0.8	108	1.3	Trinity	1	—	2	—
Mariposa	0	—	4	—	Tulare	83	1.8	168	2.0
Mendocino	21	0.4	36	0.4	Tuolumne	8	0.2	17	0.2
Merced	30	0.6	66	0.8	Ventura	116	2.5	230	2.7
Modoc	3	0.1	10	0.1	Yolo	16	0.3	29	0.3
Mono	2	—	0	—	Yuba	3	0.1	6	0.1
Monterey	94	2.0	179	2.1					
Napa	16	0.3	34	0.4	California	4053	86.0	7723	92.3
Nevada	6	0.1	17	0.4	Other States	374	7.9	260	3.1
Orange	115	2.4	213	2.5	Foreign	286	6.1	387	4.6
Placer	15	0.3	17	0.2					
Plumas	4	0.1	4	—	Total				
Riverside	63	1.3	111	1.3	Enrollment	4713	100.0	8370	100.0

Table VI. FINANCIAL AID TO STUDENTS — LOANS

Work Study Program	212	\$ 78,390
Loans —		
30-day loans (2,442 loans) (\$30 each)	1,218	73,290
1-year institutional loans	83	14,880
United Student Aid Fund	130	51,690
National Defense Student Loan	415	210,793
Gauranteed Student Loans —		
State	330	244,046
Federal	180	109,005
Educational Opportunity Grants	60	28,240
TOTAL		\$893,480



Table VII. BACHELOR'S DEGREES AWARDED BY MAJOR,  
AND TOTAL MASTER'S DEGREES,  
1958-59 to 1967-68

Major	58-59	59-60	60-61	61-62	62-63	63-64	64-65	65-66	66-67	67-68
Agriculture	—	—	—	14	19	22	43	46	44	64
Ag. Bus. Mgmt.	—	—	—	14	19	22	43	46	44	64
Ag. Engr.	24	10	16	20	17	11	15	16	9	16
Mech. Ag.	24	17	25	15	16	12	17	19	25	14
Animal Husb.	55	43	28	37	43	58	53	57	59	67
Crops	17	12	17	18	15	21	20	29	16	24
Fruit Prod.	1	7	6	1	5	10	7	7	11	8
Dairy	10	17	10	13	17	17	15	13	15	15
Farm Mgmt.	11	17	11	10	22	23	19	17	37	28
Food Proc.	—	—	—	—	3	5	3	7	10	11
Orn. Hort.	7	5	4	9	7	8	9	16	11	9
Poultry Ind.	8	7	8	7	3	6	4	5	12	11
Soil Science	17	19	12	19	12	13	15	19	18	4
TOTALS <sup>1</sup>	174	154	137	163	179	206	220	251	267	271
Applied Arts	—	—	—	—	—	—	—	—	—	—
Business	—	—	2	13	34	32	56	85	89	117
Education	41	29	39	61	63	72	95	71	13	1
English	4	9	15	1	1	0	3	34	57	63
Home Ec.	8	12	17	16	36	40	57	64	56	99
Journ.	11	1	—	6	10	10	7	9	7	9
Physical Ed.	18	26	17	23	32	26	29	33	31	38
Printing	33	21	11	14	12	13	21	13	27	21
Tech. Arts	—	16	19	24	37	31	31	46	66	72
TOTALS	115	114	120	158	225	224	299	355	346	420
Applied Sciences	—	—	—	—	—	—	—	—	—	—
Biochemistry	3	4	8	9	6	6	8	6	6	10
Biological Sci.	14	14	12	15	19	26	32	53	32	51
Mathematics	61	70	49	48	53	61	57	61	77	80
Physics	20	8	14	14	12	10	7	5	9	9
Chemistry	20	8	14	14	12	10	7	5	8	3
Social Sci.	16	16	17	12	16	29	46	50	102	112
TOTALS	114	112	100	98	106	132	150	180	234	265
Architecture <sup>2</sup>	32	45	43	36	42	67	71	67	80	92
Engineering	—	—	—	—	—	—	—	—	—	—
Aeronautical	53	53	38	40	25	31	22	33	31	37
Electrical	29	30	25	17	26	21	28	24	25	21
Electronic	71	54	68	58	64	57	73	69	48	55
Environmental	26	18	18	14	17	12	24	25	24	15
Industrial	21	15	16	23	13	26	21	17	17	22
Mechanical	140	111	112	77	68	73	71	50	83	67
Metallurgical	—	—	—	6	11	7	5	11	8	8
TOTALS	372	326	320	271	266	294	315	296	316	225
Bachelor's	775	706	677	690	776	856	934	1082	1163	1273
Master's	41	51	65	53	66	70	98	135	163	149
Campus Totals	816	757	742	743	842	926	1082	1217	1326	1422

<sup>1</sup>—Technical Certificates in Agricultural curriculums (not included above):  
20 25 30 21 14 35 47 41 51 44 27

<sup>2</sup>—For 1964-65, includes 6 Bachelor of Architecture (5-year) degrees, 7 in 1965-66, 39 in 1966-67, and 47 in 1967-68.

Table VIII. COMPONENTS OF FALL ENROLLMENT, 1960 — 1967

Fall	Undergraduate Students				Graduate Students	Total Enrollment
	First-Time Freshmen	New Trsfers.	Returning & Continuing	Totals		
1960	1004	722	2849	4575	138	4713
1961	1094	740	3096	4930	171	5101
1962	1297	760	3486	5543	258	5801
1963	1258	819	3897	5974	336	6310
1964	1499	881	4223	6603	301	6904
1965	1116	875	4884	6875	339	7214
1966	1304	1035	5016	7355	384	7739
1967	1285	1136	5448	7869	501	8370

Table IX. COMPARATIVE DISTRIBUTION OF BACHELOR'S DEGREES BY SUBJECT FIELD, CAL POLY, SAN LUIS OBISPO, AND ALL CALIFORNIA STATE COLLEGES, 1966-67

Subject Fields	Cal Poly, SLO		All State Colleges (includes SLO)	
	No.	%	No.	%
Agriculture	267	23.0	544	2.3
Architecture	39	3.4	39	0.2
Business	89	7.7	3,443	14.4
Creative Arts	0	—	1,938	8.1
Criminology	2	—	202	0.8
Education	13	1.1	533	2.2
Engineering	277	23.8	1,401	5.9
Foreign Languages	0	—	596	2.5
Health Science	0	—	93	0.4
Home Economics	56	4.8	538	2.3
Humanities (English, Jour., etc.)	64	5.5	2,167	9.1
Ind. Arts & Technology (TA, Pr.)	93	8.0	682	2.9
Mathematics	77	6.6	704	3.0
Natural Resources	0	—	174	0.7
Nursing	0	—	381	1.6
Physical Education & Recreation	31	2.7	930	3.9
Psychology	0	—	1,102	4.6
Sciences (Bio., Chem., (Physics, BioChem.))	55	4.7	1,594	6.7
Social Sciences	102	8.8	6,588	27.6
Area Studies	0	—	63	0.3
Special Majors	0	—	146	0.6
TOTALS	1,163	100.0	23,858	100.0

Source: Based on the April, 1968, report from the Division of Institutional Research, Office of the Chancellor, 1966-67 Statistical Report of the California State Colleges, Part F, pp. 6-8.



