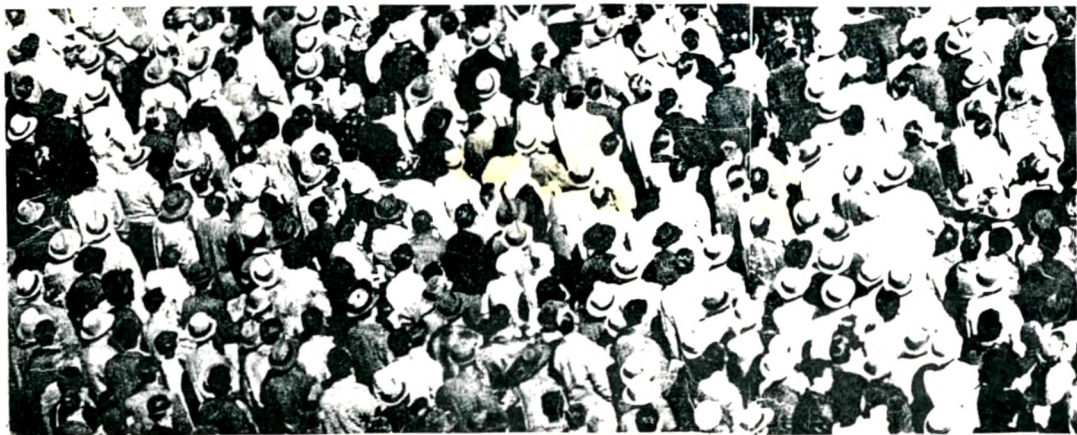


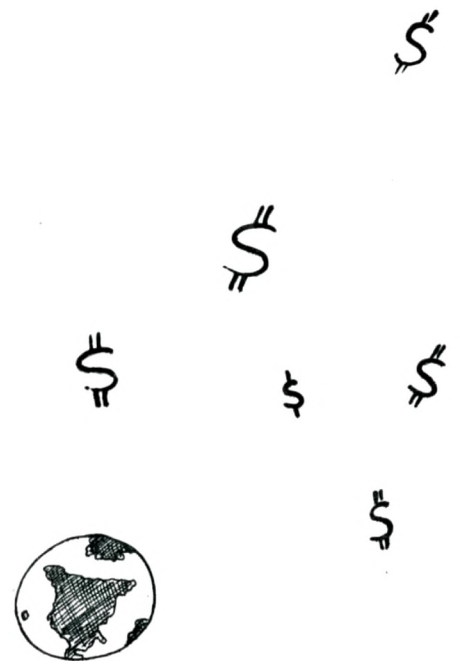
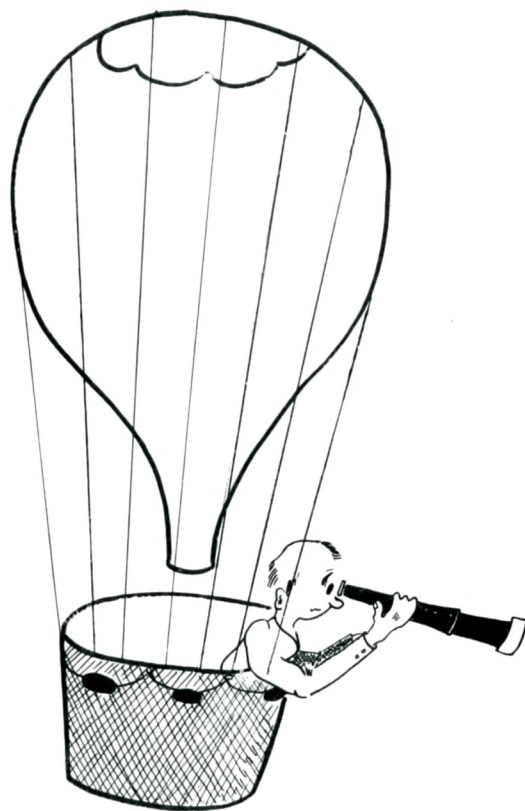
CONFIDENTIAL

# HOW MUCH DO 220 PEOPLE COST ?



CONFIDENTIAL

**DEPENDS ON HOW  
YOU  
LOOK AT IT!**



**220**

**MEN & WOMEN**

**living on Units 2 & D  
at**

**MENDOCINO  
STATE HOSPITAL**

**have cost the**

**STATE OF CALIFORNIA**

**\$4,250,000.**

**during the past 18 years,**

**their average period  
of hospitalization**

# THESE ARE PEOPLE

with names like

*Jones*

*Brown*

*Chan*

*Smith*

*Sanchez*

and numbers like

*23176*

*7279*

*29715*

*33194*

*19607*

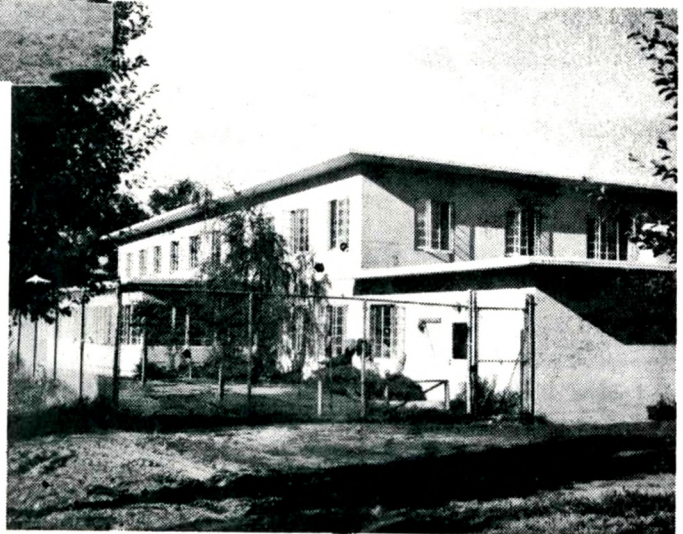
*31235*

# THIS IS WHERE THEY LIVE

**UNIT 2**

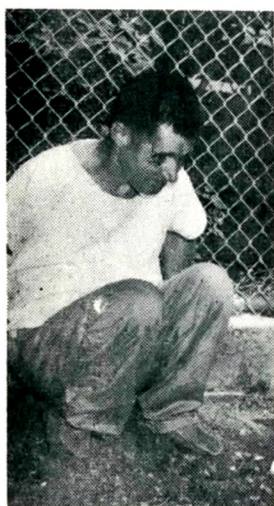
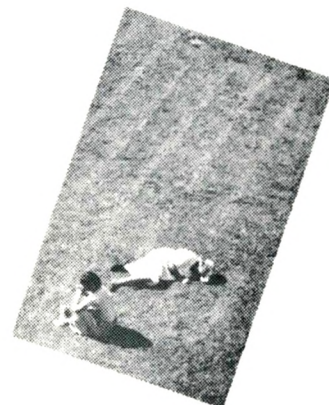
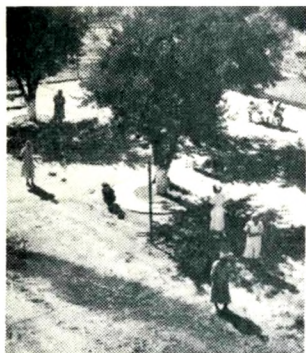


**UNIT D**





# THIS IS HOW THEY SPEND THEIR YEARS!



These are the most

REGRESSED

patients in the hospital !





With the present level  
of staffing  
most of them  
will DIE here  
• BUT •

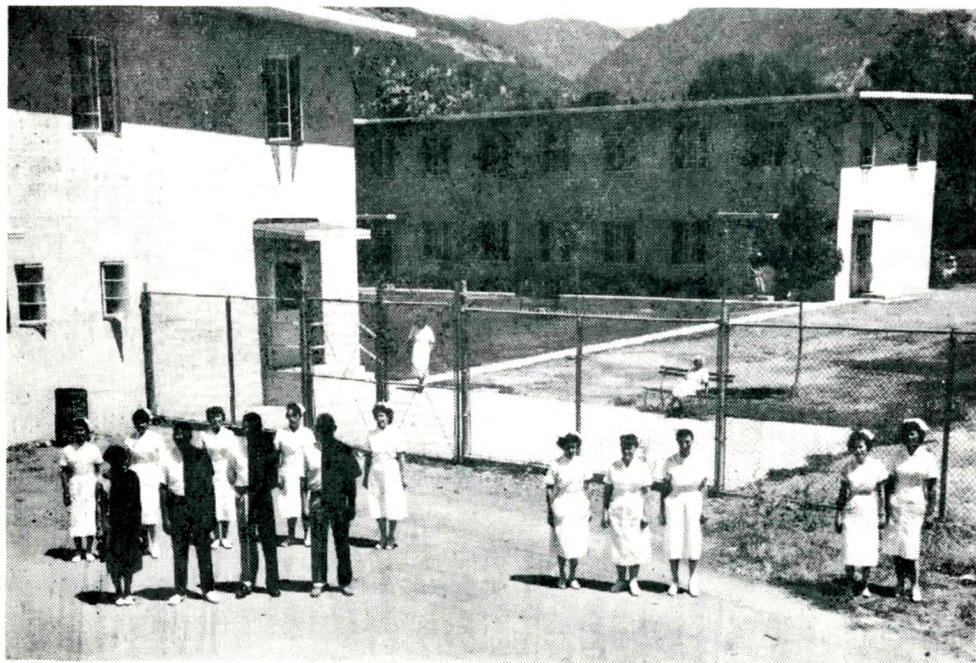
before so doing  
WILL COST YOU  
**\$6,000,000.\***

*\*assuming a life expectancy of 65*



# THIS IS THE PRESENT STAFF OF UNIT D

*- unit 2 is an identical unit for men -*

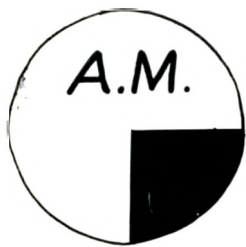


- $\frac{1}{3}$  psychiatric social worker
    - $\frac{1}{2}$  physician
      - $\frac{1}{4}$  rehabilitation therapist
        - $\frac{1}{4}$  clinical psychologist
- and**

# A NURSING STAFF

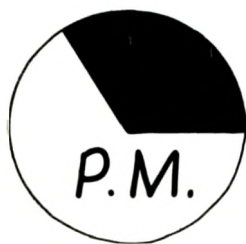
- **24** hours a day

- **7** days a week  
of



**1** psychiatric technician  
for each **22** patients

---



**1** psychiatric technician  
for each **43** patients

---

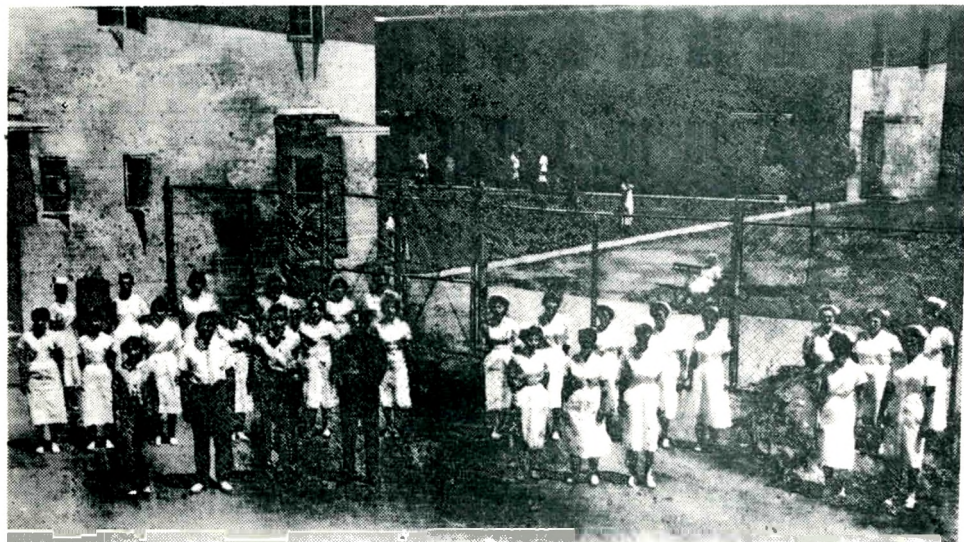


**1** psychiatric technician  
for each **55** patients

THIS MANY EMPLOYEES  
COST \$48,250. *a year.*

---

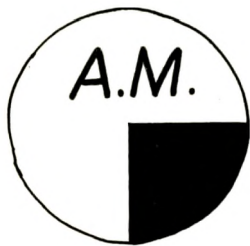
WHAT WE NEED TO PROVIDE  
AN ACTIVE TREATMENT  
PROGRAM IS :



- 1 psychiatric social worker
    - 1 psychiatrist
      - 1 rehabilitation therapist
        - $\frac{1}{2}$  clinical psychologist
- and*

# 25 MORE PSYCHIATRIC TECHNICIANS

Who would be assigned  
like this .



*1 psychiatric technician  
for every 9 patients.*



*1 psychiatric technician  
for every 12 patients.*



*1 psychiatric technician  
for every 22 patients.*



**This many people  
will cost approximately  
\$ 108,000.**

**more per year**

**- BUT -**

**THEY WILL SAVE YOU**

**at least**

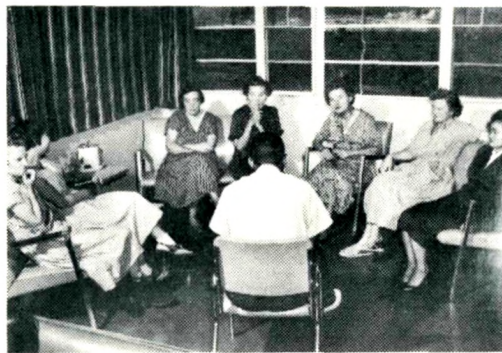
**\$ 275,000.**

**IN THE NEXT 5 YEARS !**

# HOW ? BY DOING THINGS LIKE THIS !



• ACTIVITIES •



• GROUP PSYCHOTHERAPY •



• OCCUPATIONAL  
THERAPY •



• LEAVE PLANNING •



• VOCATIONAL TRAINING •



• INDIVIDUAL COUNSELING •

**WITH ENOUGH STAFF**

**to provide this level**

**of treatment**

**on UNITS 2 & D**

**50**

*additional patients will  
leave the hospital at the  
end of the FIRST year.*

**100**

*patients by the end  
of TWO years.*

**150**

*patients by the end  
of THREE years.*

**250**

*patients by the end  
of FIVE years.*

# HOW DO WE KNOW?

By the experience of many  
psychiatric hospitals in  
KANSAS · OKLAHOMA ·  
MASSACHUSETTS ·  
· NEW JERSEY ·  
and by our own experience in  
CALIFORNIA  
during the last 10 years!

What we have learned  
during this time can be  
expressed by  
TWO SIMPLE FORMULAS:



**More treatment money**

**PLUS**

**More staff**

**EQUAL**

**Fewer hospitalized patients.**

**. . .**

**Fewer hospitalized patients**

**EQUAL**

**Lower per capita cost to the**

**TAXPAYER**