

mustang handbook

1969 - 1970

CALIFORNIA STATE POLYTECHNIC COLLEGE • SAN LUIS OBISPO, CALIFORNIA

Cal Poly . . . A Growing Place

As a Cal Poly student, you will be part of a rapidly expanding college. With an enrollment of over 10,500 in 1969-70, Cal Poly expects to expand greatly during the next several years in order to meet the needs of an estimated 12,000 students by 1975.

Cal Poly began in 1901 when a bill passed the California legislature providing for the establishment of a school for "mental and manual training in the arts and sciences including agriculture, mechanics, engineering, business methods, and domestic economy."

The site was selected — 280 acres near San Luis Obispo for \$50,000. When the cornerstone was laid for the first building, a wagon trail through a muddy field was the only access to the site. The first class to graduate in June, 1906, was composed of eight hardy students.

The 1920's were years of growth and expansion. Six additional buildings were added, the project system commenced, printing was included in the curriculum and a junior college division was added. Then the severe economic depression hit in the early '30's. The budget was slashed and the legislature seriously considered abolishing the school.

In 1933, with the enrollment down to less than 100 students, Julian A. McPhee, chief of the California Bureau of Agricultural Education, agreed to take over the presidency of the Polytechnic School.

By 1942 the Polytechnic had become a four-year college, granting Bachelor of Science degrees in agriculture

and in engineering. During World War II the campus was the site of a Naval Flight Preparatory School from which more than 3,600 naval aviation cadets were graduated.

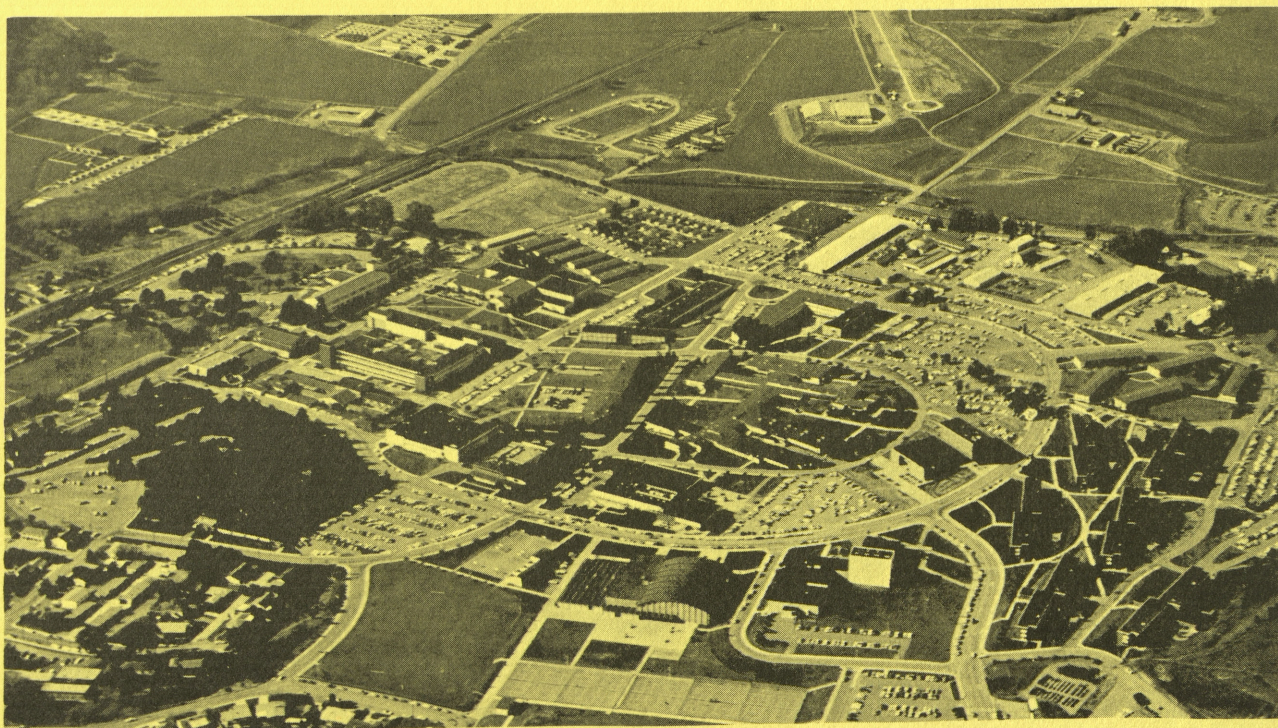
The first five postwar years saw tremendous gains for the college in curricular offerings, physical plant and enrollment. A new Science and Humanities Division was added and enrollment approached the 2,900 mark.

In 1947 the legislature officially changed the name from California Polytechnic School to California State Polytechnic College.

Cal Poly remained an all-male school until 1956 when girls were readmitted after some 27 years of classes without coeds.

Expansion and change have continued to be the keynotes on the campus in the past 10 years. The campus, now expanded to 5,100 acres, has had the addition of numerous buildings, including residence halls, the College Dining Hall, the Men's Gymnasium, an outdoor swimming pool, a music and theater building, a greatly enlarged library, an additional engineering building and the new Administration Building. This fall you will watch construction under way on the Julian A. McPhee Memorial College Union.

This record of growth and expansion, of resurgence from adversity, is the Cal Poly story. This is the history of your college.



The Mustang Handbook

It is the objective of this handbook to introduce you to Cal Poly's friendly campus and help you become acquainted with its staff, services, traditions and activities. We hope you will find it a valuable reference book throughout the year.

Credits:

Cover ----- Karen Treanor
 Photography ----- Joe Frisina,
 Fresno Bee; Boyd Wettlauger,
 Audio-Visual Department; Doug
 Gibson, ASIO; Journalism Dept.
 Photo Bureau.

Published by the Associated Students, Incorporated, California State Polytechnic College — San Luis Obispo, California 93401.

Edited by Doug Gibson,
 Associated Students Information Officer.

Contents

	PAGE
Welcome to Cal Poly	2
Academics	3
Student Personnel Services	4
Admissions	5
Associate Dean-Women	6
Counseling and Testing	6
Health Services	7
Residence Halls	8
Off-Campus Housing	8
Dining Hall	9
Foundation	9
Placement Office	10
Loans and Scholarships	10
International Students	11
Student Government	12-13
Co-curricular Activities	14
Publisher's Board	15
College Program Board	16-17
Welcome Week Board	18-19
Welcome Week Calendar	20
New Student's Check List	20
Music Board of Control	21
Board of Athletic Control	22-23
Poly Royal Board	24-25
ASI Office	26
El Rodeo Order Blank	26
Clubs	28
Inter-Faith Council	29
El Corral Bookstore	29
Library	30
Relaxation—Poly Style	31
Questions and Answers	32
Map of Campus—Inside Back Cover	



Dr. Robert E. Kennedy

A Message From the President

Your decision to attend a four-year college is one of the more important decisions you will make in your lifetime. The next important decision you must make will be how you will use the opportunity that is now yours. Each Cal Poly student has his own private hopes, his own personal aspirations for the future. Each has the opportunity to decide for himself what his major will be, how many hours he will study, how many outside-of-class activities he will include in his total educational experience. At Cal Poly the educational program emphasizes occupationally-centered education leading to careers in many specialized fields. But combined with this aspect of education are two other important factors: the availability to you of many general education courses and many co-curricular activities. We believe that the combination of these three elements (specialized education, general education, and co-curricular experiences) prepares our graduates well for careers, citizenship, and leadership. At Cal Poly you will find all the elements that make this campus an environment of opportunity. But though the "opportunity" is here for each student, the essential ingredient is the motivation each individual has for learning.

For example, there are well over one hundred student organizations at Cal Poly, each established to achieve particular purposes. There are departmental clubs related to each major discipline, professional organizations, service clubs, honor societies, hobby clubs, residence hall organizations, college union and student body government committees and councils. Each of these organizations is democratically open to those interested and qualified. These organizations are practical laboratories for citizenship and leadership training. Within the environment of the college an individual student should grow in his abilities to relate to and communicate with other individuals; he should participate in activities in which he can learn to acclimate himself to the group. As a member of one or more of the many student organizations available, a student will learn to work with others using democratic processes, learn to make decisions in consultation with others, and learn that one must give up some of his individual freedom in order to achieve agreed-upon common purposes of the group. To take advantage of the co-curricular opportunity, a student must take the initiative to join organizations of his choice and after that to become an active member so that he will profit by the educational experience.

The same will be true of your total college experience. Your teachers and advisors are here to help you; they are friendly men and women interested in assisting you in every way possible. But *you* must take the initiative and be active in *your* search for learning.

"Welcome to Cal Poly"



Many of you who will be reading through this handbook will be entering college for the first time.

Your introduction to the activities and services of Cal Poly begins with our "Mustang Handbook." Planned with the idea of giving you a brief, and we hope, comprehensive view of our campus community and what it will mean to you during your college years, the handbook will answer many questions you may have concerning student activities and services.

Cal Poly offers you an unlimited scope in which to learn and discover the meaning of college life as it relates to your future.

Because our educational emphasis is vocational with practical training rather than strictly theoretical, the services and people who administer them are interested in your individual development. To implement this interest in student personnel services, which you will learn more about later in this book, the college staff is ready to serve you in many ways.

"Friendliness," which is the key word on the Cal Poly campus, pervades throughout the college, not just on a student-student relationship, but also on a student-faculty relationship. The college is well known for its "how are you — glad to meet you" feeling.

The philosophy of the college — "learn-by-doing" — is implemented on campus through the associations of student and faculty on various boards and councils. Each of the 100 or so clubs and organizations has a faculty advisor, and, in addition to this, student government officials are invited to sit in on certain faculty committees.

Our philosophy is encouraged in all levels of activity. With the help of your department advisor, you will select your program of study, and through your campus associations you will select those activities and functions which have meaning for you. Participation is the key to learning, but selection is the key to useful assimilation of that learning. You are encouraged to become involved with your fellow students, which is one of the most pleasant methods of rounding out your education while in college.

The Academic Side at Poly . . .

ACADEMIC REGULATIONS

It is the student's responsibility to know and observe the academic regulations of the college as presented on pages 36, 37 and 38 of the 1969-70 catalog.

GRADE POINT AVERAGE

To find it, first multiply the number of grade points assigned for the course (A-4, B-3, C-2, D-1, F-0) by the units of credit earned. The sum thus obtained from grades is divided by the total number of units attempted.

SCHOOL OF AGRICULTURE

This school of the college prepares students in the field of agriculture with the main objective of giving them a full and broad understanding of basic factors involved in production, management, processing, distribution, marketing, sales and services in the fields of related business, to make efficient operators and managers. The school stresses production techniques and basic management to benefit to the fullest extent those returning to the farm or entering employment in agricultural fields upon leaving college.

SCHOOL OF APPLIED ARTS

Wide ranging programs leading to degrees in English, Business Administration, Child Development, Speech, Education, Journalism, Home Economics, Physical Education and Printing Technology and Management are offered. In addition, the school provides supplementary courses for general education in all curricula. The school through its Education Department coordinates a campus-wide teacher education program and prepares individuals who are seeking credentials.

SCHOOL OF APPLIED SCIENCES

Curricula offered by this school lead to degrees in Biochemistry, Biological Sciences, Social Sciences, Computer Sciences, History, Chemistry, Mathematics and Physics. The school provides courses designed to aid all students in meeting general education requirements, pro-

vides courses that support or complement areas of specialization by students in other schools, and provides math, natural and social science courses for students preparing to teach.

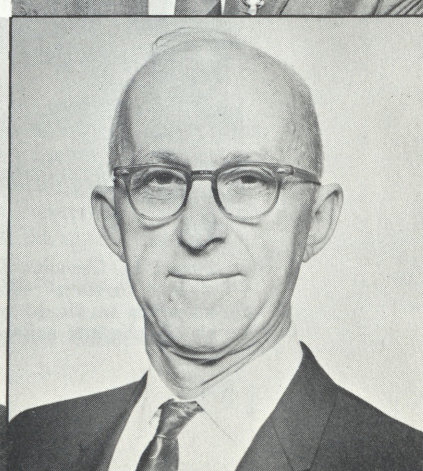
SCHOOL OF ARCHITECTURE

Degree programs in Architecture, Architectural Engineering and City and Regional Planning are offered. Common objective of these programs is betterment of man's physical environment. The programs endeavor to give the student a set of social values, a technical background, and a training which releases creative faculties in a way which will make him effective in his profession and as a person.

SCHOOL OF ENGINEERING

In this school students can pursue degree programs in Aeronautical, Electrical, Electronic, Environmental, Industrial, Mechanical, Metallurgical Engineering, Engineering Technology and Industrial Technology. Students learn to cope professionally with current engineering problems and are prepared to learn to deal with problems of the future. Students learn to understand real situations related to technical systems and components, analyze and synthesize them, and to apply usable solutions.

J. Corder Gibson, Dean of Agriculture, at right; left to right below, Dr. Carl C. Cummins, Applied Arts; Dr. Clyde P. Fisher, Applied Sciences; George J. Hasslein, Architecture; Dr. Archie Higdon, Engineering.



Student Personnel Services . . .

When you arrive on the Cal Poly campus you will be starting on an educational adventure quite different from that encountered in high school or junior college. It is not at all unusual to be excited and perhaps a bit bewildered. If you experience some initial confusion, do ask questions rather than acting in doubt. Everyone is willing and pleased to help you.

You will find many people ready to assist you, for Cal Poly is concerned with your total development as a person while in college — intellectually, of course, but also emotionally, socially and physically.

The student personnel services are services dedicated to the welfare of the *individual* student. We don't want you to feel that you are just a name or a number on the Cal Poly campus. We know that you will have some problems which will need individual attention, and all the people who work in the Student Personnel Division will try to give you personal help when you need it.

Included in the student personnel services at Cal Poly are such diverse functions as counseling, co-curricular activities, health services, housing, admissions and records, financial aids and placement. Each of these services is

described in detail in the following pages. We suggest that you read this material carefully, for it will answer many questions for you.

The student personnel services are staffed with highly competent professional people who are skilled in working with students. These people share a common interest and a joint concern. Their common interest is you, the student; their joint concern is your welfare. You will find them eager to work cooperatively with you to keep you healthy, both physically and emotionally; to keep you well housed; to help you learn new skills in human relations and leadership; and to help you with financial problems and vocational plans.

Please note that we have said that the student personnel staff is eager to "work cooperatively with you." This choice of words is deliberate, for at Cal Poly we will always consider you a responsible participant in your own development and not a passive recipient of services. You will at all times be expected to take the initiative in solving your own problems.

Students are always welcome in any office in the Student Personnel Division to discuss problems or to offer objective criticisms of any phase of college life.



Everett M. Chandler, Dean of Students and coordinator of student personnel services, always welcomes students to his office to discuss problems or offer helpful suggestions on any phase of college life.



Most of the Student Personnel Services are located in the Administration Building. Here you will find the counseling and testing services, admissions office, placement office, financial aids office, and the housing director's office.



Paul Winner, Associate Dean—Admissions and Records, discusses procedures with a group of new students.

Admissions . . .

The purpose of the Admissions Office and Records Office is to assemble and evaluate your previous school records and to maintain a record of your scholastic achievements at Cal Poly.

The following information may provide answers for some of your questions about enrollment at Cal Poly.

1. CHANGE OF PROGRAM: Students who find it necessary to change their course program after having registered for any given quarter should contact their departmental advisor regarding the proposed change. Proper forms for dropping or adding courses may be obtained in the College Records Office, Administration Building, Room 222. It is the student's responsibility, once he has enrolled in a course or course section, to notify the course instructor in both the lecture and laboratory sections if it becomes necessary to withdraw from the course.

2. REGISTRATION FEES: All students pay a registration fee. This is \$50.00 for the fall quarter and \$44.00 for each of the winter and spring quarters. Registration fees must be paid when registering for classes. Students are urged to pay the \$9.00 per quarter medical fee which is optional. Checks are accepted only if made out for the exact amount of the fee due.

3. NON-RESIDENT TUITION FEE: According to California state law, a non-resident tuition fee of \$890 for the regular college year (\$297 per quarter) is charged to all students from the United States who have not been legal residents of the State of California for one year prior to the date of registration.

4. FOREIGN STUDENT NON-RESIDENT TUITION FEE: According to California state law, a foreign student non-resident tuition fee of \$255 for the regular college year (\$85.00 per quarter) is charged to all students from countries other than the United States.

5. TRANSFER STUDENTS: Students who transfer from a college or junior college should report to the Evaluations Office, Administration Building, Room 217, to make arrangements for an evaluation of their transfer units if evaluation has not been completed previously.

6. ATTENDANCE: Students are expected to be regular in attendance in order to keep the quantity and quality of their work high. Absence from classes is regarded as a serious offense. An excused absence can be allowed only by the instructor in charge of the class upon consideration of the evidence justifying the absence. An excused absence merely gives the individual who misses the class an opportunity to make up work and in no way excuses him from the work required.

7. GRADE REPORT: Each student is furnished with a quarterly grade report shortly after the end of each quarter. A copy of the report is given to the student's departmental advisor. Students may leave a self-addressed stamped envelope in the Records Office for mailing of the grade report if they wish to do so.

8. VETERAN STUDENTS: Veteran students who have problems regarding their enrollment under the various laws included in the G. I. Bill or California Veterans' laws should report to the Veterans' Clerk in the Records Office, Administration Building, Room 222.

9. WITHDRAWAL: Students who find it necessary to withdraw from college should obtain proper withdrawal forms from the College Records Office.

Associate Dean ... Women

Dr. Lorraine Howard is responsible for assisting women students develop their individual abilities to the fullest possible extent through successful adjustment to the curricular, co-curricular and social aspects of college life. She is concerned with the educational goals of women and aware of their changing role in American society.

Dr. Howard provides counseling service to both men and women students who desire to discuss personal, social, educational or vocational problems. Parents are also invited to visit with Dr. Howard.



Dr. Lorraine Howard, Dean of Women

Counseling and Testing...

The Counseling Center, headed by Mr. George Mulder, associate dean — Counseling and Testing, offers counseling services to all students. College students often have problems arise which are annoying. The Counseling Center feels that most students can, and want, to solve their own problems. And it knows that this problem solving often is accomplished more readily when skilled assistance is available to the student.

For this reason, the Counseling Center is staffed with a group of thoroughly trained, professionally prepared



George Mulder, Associate Dean of Counseling and Testing, heads the Counseling Center which is staffed with a group of thoroughly trained, professionally prepared counselors.

counselors. They are available to you either at your own request or upon your referral from one of the College's staff.

The Counseling Center does not advise. It helps a student advise himself. To do this, the student is helped in gathering facts about himself and relating these to the opinions and attitudes he has. This process enables him to learn to know himself a little better, and often it assists him to a more efficient self-direction.

What are some of the problems which you may encounter and which the Counseling Center can help you to resolve? They fall basically into three categories: (1) educational, (2) vocational, and (3) personal.

Educational problems may arise from poor preparation in basic skills, such as reading and arithmetic. Help can be given in developing strength in those skills. Frequently, a student has poor study habits or does not use his time wisely. These can be helped. In addition, students are often perplexed about the wisdom of their choice of major. If any of these should become a problem to you, visit the Counseling Center.

Vocational problems generally focus around either the wisdom of one's choice of a vocation or probabilities of success in one's choice or the pattern of college and outside-college experience most likely to assure success.

As a new college student, you are both breaking with the old and taking on the new. This process of becoming an independent adult frequently brings with it a variety of personal problems. These may include such things as how to understand and get along with one's family, how to get along with other people, how to control one's feelings, how to make friends with the opposite sex, how to understand oneself, how to work efficiently, how to build confidence in oneself, how to learn to work under authority, and various others. Again, you are welcome to use the Counseling Center to help you resolve any of your personal problems.

Primarily, the Counseling Center can help you with a method for looking at and attempting to solve your present problems. This, in turn, will enable you better to solve future problems.

Health Services . . .

The staff and facilities of Cal Poly's Student Health Center are dedicated to the ideals of preventive, diagnostic and therapeutic medicine. These services are offered in an attitude of health education. In general, the same approach as that of the student's own family physician is provided. The Health Center staff has several full-time physicians, registered nurses, and medical technologists to help you.

The Health Center is located on Campus Way and Via Carta. It is comprised of two units: (1) A thirty bed, fully accredited hospital, and (2) outpatient department. You will find it a well equipped clinic and hospital with facilities for minor surgery, pharmacy, laboratory, physiotherapy and diagnostic x-ray facilities.

Your Health Center is student subsidized and oriented. The health program is financed by the student in three steps and for *complete medical coverage*, one should participate in all three:

1. The college registration fee allows emergency outpatient care from 8:00 a.m. to 5:00 p.m. Monday through Friday.

2. An annual \$24.00 health fee for fall, winter and spring quarters, or \$9.00 per individual quarter, entitles the student to care by a campus physician and hospital around the clock throughout the academic calendar. Additional services under this program are the departments of physiotherapy, and prescription discount in the campus pharmacy.

3. Supplementary medical and hospital insurance is offered and handled by the Health Center in order to cover major surgery and emergency expenses incurred away from campus.

Medical care today is reaching a pinnacle of effectiveness; it is also expensive. The College Health Program is available to you as a regular student at a relatively inexpensive rate. Consider this service in your planning. Regard it as a part of your overall educational experience.

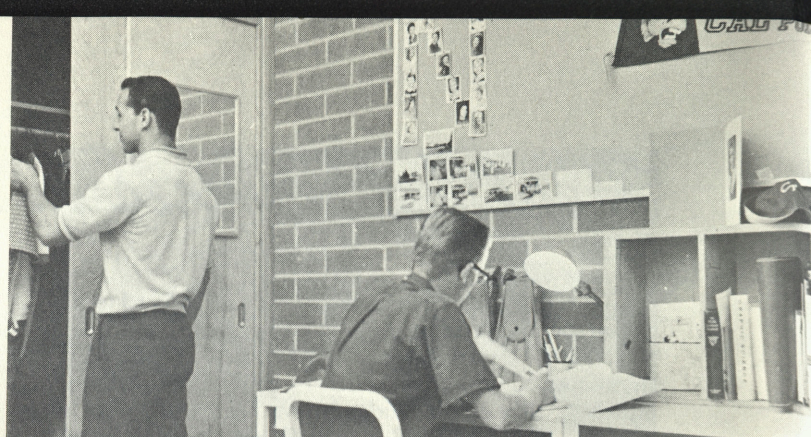
CLINIC HOURS: Monday through Fridays 9 to 11 a. m. and 2 to 4 p. m. Physicians by appointment.

EMERGENCIES: 24-hour on-campus service. After 5:00 p.m. and on Saturdays and Sundays, call the Health Center — 546-2151.

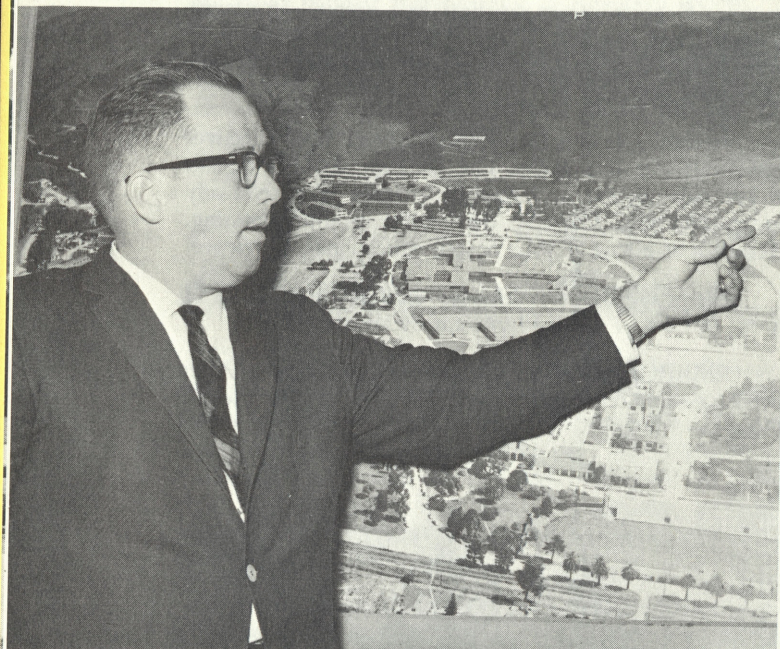




Time for discussion, games and music.



It's a man's world.



Robert Bostrom, Housing Coordinator, points out location of new dorms.

The Residence Halls . . .

Residence hall living is a unique experience in the process of higher education and Cal Poly takes advantage of every opportunity to make it a profitable one for the 2,400 students who live in the halls.

The housing staff, headed by Mr. Robert Bostrom, housing coordinator, works to foster a stimulating intellectual and social environment in the halls. Study is encouraged through the observance of regular quiet hours, but residents also have ample opportunity to participate in intramural sports, receptions, dances, exchanges, discussion groups and many other activities.

Each hall has its own student government organization for planning and carrying out its activities.

Alcoholic beverages are not permitted on campus, nor are students allowed to be on the campus in an intoxicated condition.

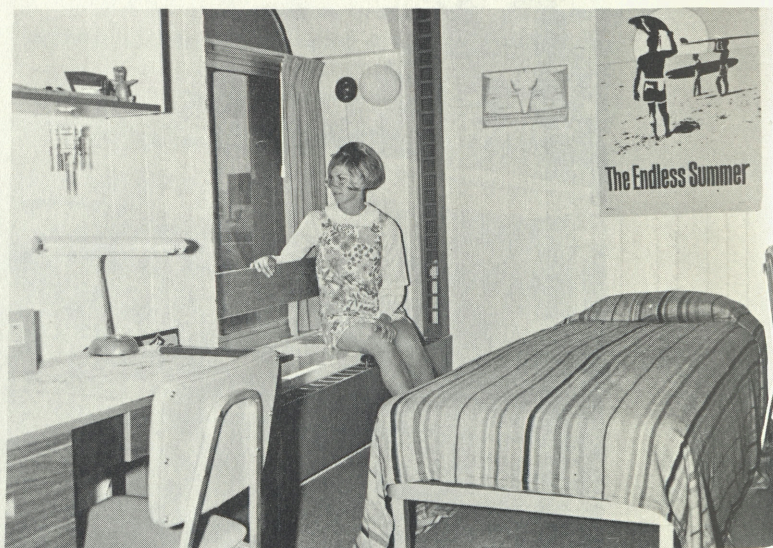
All inquiries pertaining to housing in the residence halls should be directed to the Cal Poly Housing Office.



Relaxation in the lounge.

Off-Campus Housing . . .

Privately owned and operated off-campus housing is available for both men and women students. The college does not inspect or supervise these facilities. Students living in off-campus housing are expected to observe any and all special regulations established by their landlords. Leases or housing agreements should be read very carefully before they are signed.



It's a woman's world.

The College Dining Hall

The College Dining Hall is the social center of the campus, with its two dining rooms and snack bar. The dining rooms are capable of accommodating 2400 students per meal, and the snack bar seats 400. Meals are served cafeteria style in the dining rooms to meal card holders. A wide range of sandwiches, snacks, salads, and desserts is available a la carte in the snack bar.

Students living in the residence halls on campus, and a limited number of students living off-campus, may purchase a meal card for \$165.00 per Quarter. This card is good for 15 meals a week: breakfast, lunch and dinner for the five day week. The meal card can only be used in the dining hall Monday through Friday, and may not be used in the snack bar.



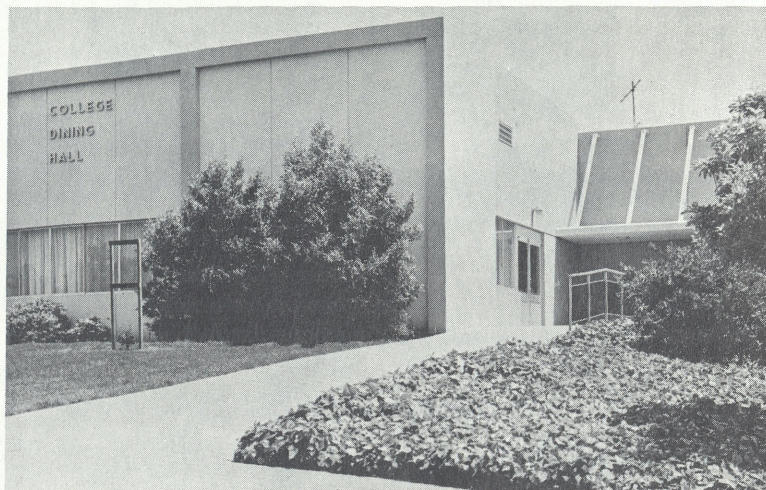
For a snack or a meal this is the place.

The Foundation . . .

The California State Polytechnic College Foundation is a nonprofit corporation organized under the laws of California for the purpose of aiding and extending the educational program at the College. Mr. Eugene Brendlin is the foundation manager.

The Foundation, by agreement with the College, operates and manages campus housing and dining facilities. It also finances the student project program.

Student projects have long been a valuable part of the "learn by doing" Cal Poly instructional program. The Foundation, over many years, has accumulated a "project fund" of sufficient size to allow for the complete financing of all approved student projects other than breeding stock. Students purchasing dairy breeding stock can secure partial financing through the Foundation. Breeding herds and flocks are maintained by the Foundation for use in the instructional program.



Student entrance to College Dining Hall.

Because your meal card must be presented at every meal, care must be taken not to misplace it. If you do, go to the Foundation Office and request a meal card replacement charge slip. Take this charge slip to the cashier in the Administration Building, pay the replacement charge, and return to the Foundation Office with the receipt, where a new meal card will be provided.

Food Service hours for meal card holders in the dining rooms Monday through Friday are:

Breakfast	6:30 a.m. - 9:30 a.m.
Lunch	11:30 a.m. - 1:30 p.m.
Dinner	4:30 p.m. - 6:30 p.m.

The Cafeteria Snack Bar is open daily for complete meal service, as well as for snacks, sandwiches, salads, desserts and fountain items. Items are individually priced. Food service hours in the Snack Bar Monday through Saturday are: 7:00 a.m. - 7:00 p.m.
Sunday: 9:00 a.m. - 7:00 p.m.

The Staff Dining Hall, adjacent to the dining rooms, is available for special club functions through reservations made in the Activities Office.



The Snack Bar . . . a place to study, meet friends.



Anxious to assist you in pursuing part-time jobs and help you prepare for career employment are Eugene A. Rittenhouse, Director of Placement, and his staff. Pictured with the director are (left to right) Mrs. Bonnie Moorman, Mrs. Laurie Bolden (foreground), Mrs. Mary Shaw, Placement Supervisor; Mrs. Eleanor McWhinney and Mrs. Marla Hammerstrom.

Placement Office . . .

Cal Poly's "learn-by-doing" approach carries over into the Placement Office which functions as an integral part of Poly's total instructional effort. Mr. Eugene A. Rittenhouse is the director of placement. Mrs. Mary Shaw is placement supervisor and Mrs. Mary Eyler is financial aid counselor.

It is important that students realize that the Placement Office does not get jobs for them. It does offer stu-

dents assistance in pursuing employment. Student counseling in the critical process of getting ready for effective placement is highly important, for if students can be helped to know their own minds concerning what they want to do, their placement interviews will be meaningful and rewarding.

Get acquainted with the Placement Office early in your college career. It serves student wives as well as students, and provides information on part-time and summer jobs as well as career employment. You will be warmly received at the Placement Office, and every effort will be made to help you obtain the job that is right for you.



Mrs. Mary Eyler, Financial Aids Counselor, handles a telephone inquiry while Mrs. Nancy Muir, clerk, stands by with current information on loans. Scholarship recipients for current year should report to Mrs. Eyler.

Loans and Scholarships

The college maintains an extensive loan program to help students. If you are in financial difficulty, either emergency or long range, discuss your problem with Mrs. Mary Eyler, the financial aid counselor, in the Placement Office, Administration Building 213.

An emergency loan from one of our short term loan funds may help you. If a short term loan is not feasible, plans may be developed for a long term educational loan for a larger amount. National Defense Education Act Student Loans as well as additional programs also are available. Applications for the loans should be submitted prior to the start of the college year since funds are limited. Cal Poly also participates in the work-study program financed by the Federal Economic Opportunity Act. Information on eligibility for this program is available through the financial aid counselor.

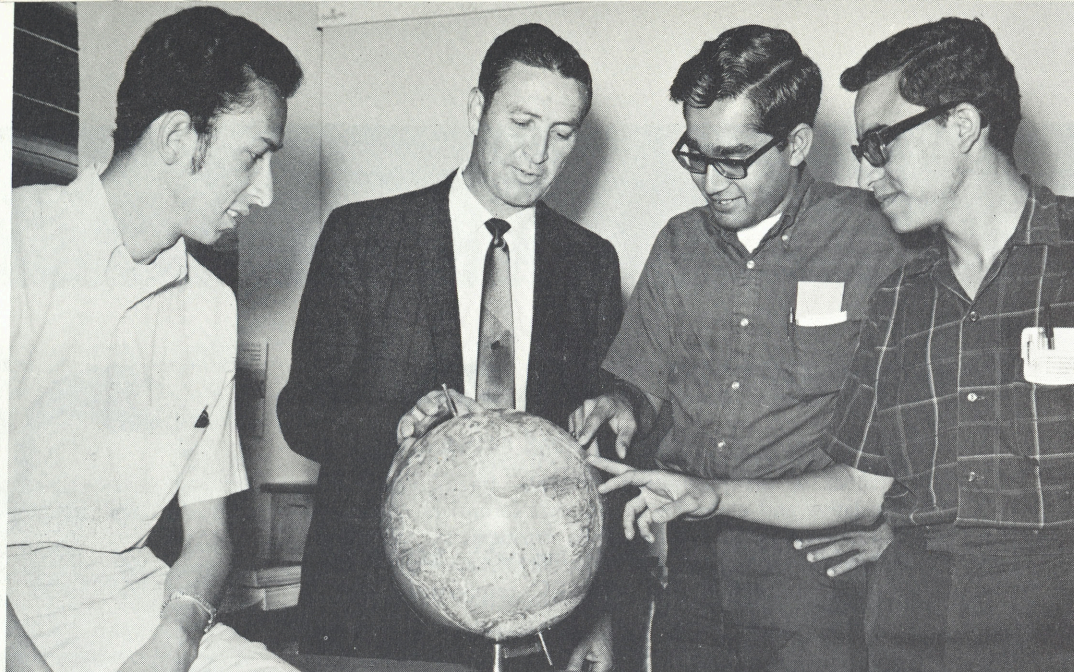
Scholarships for this college year have been awarded, but information regarding scholarships is available from the financial aid counselor. Deadline for submission of scholarship applications is April 1.

International Students . . .

Cal Poly, because of its world wide reputation for excellence in the "Know How and Know Why" approach to learning, considers itself fortunate in attracting more than 450 international students from over 60 countries to its campus each year. These students take an active part in the academic and co-curricular life of the campus, both through their own interest groups and those of the general student body. The response of American students to our international visitors and their interest in learning more about them resulted in the People to People Club to which all students may belong. The Club seeks to further understanding and friendships between American and international students through bi-monthly meetings.

AN INTERNATIONAL Student Council, supported by the Associated Students, coordinates the clubs and their activities. Membership on the Council is an elected position by each foreign student group. "International Week," one of the major activities of the People to People Club, places emphasis on promoting international understanding. During Poly Royal the foreign students construct and operate a "Flea Market" where exhibits from many clubs are displayed and foreign foods may be purchased.

Mrs. June Gersten, Foreign Student Adviser, listens to Mohinder Gill from India tell a story about the elephant.



Foreign Student Adviser, Glenn Rich, talks things over with students from Bolivia, Pakistan and Venezuela.

The foreign student counselor is the overall coordinator of the foreign student activities and services. The office is in Room 217A, Administration Building. Volunteer workers from the community and from the People to People Club assist the foreign student counselor in providing many services. They include informal counseling, host family programs, English tutoring, orientation regarding recreational and religious outlets, assistance in complying with governmental regulations, and assistance to activity groups in helping them provide effective intercultural programs.

CAMPUS interest in foreign relations field led to formation of Model United Nations Chapter. It also strives to promote better international understanding. Membership is made up of both American and foreign students. Competition with debate teams of other collegiate chapters is a major activity.

The International Lounge, in the north end of the Post Office building, is open to all international clubs for meetings and informal discussions. People to People Club hosts a coffee hour every Friday at 3 p.m. in the Lounge. All students are welcome.

The learning that evolves from associations of international and American students is invaluable for your future. Take advantage of this learning experience by participating in an international group.

There's a Place for YOU

1969-70 ASI Officers

When you enroll at Cal Poly, you will become a member of the Associated Students, Incorporated. The legislative and executive bodies that formulate Associated Student policy and transact its business are called the Student Affairs Council and Student Executive Cabinet, usually shortened to SAC and SEC, respectively.

SAC, the legislative branch, presided over by the ASI vice president, enacts policies and has the final authority on the allocation and expenditure of ASI funds. SEC, the executive branch, is the administrative end of student government. This body is presided over by the ASI president and has the responsibility of putting into effect programs enacted by the legislative body and is also responsible for the scheduling of events on campus. The president of the college delegates authority to these two groups each year so that they can legally carry out the business of the Associated Students as laid down in Codes and Bylaws of the Associated Students, Incorporated.

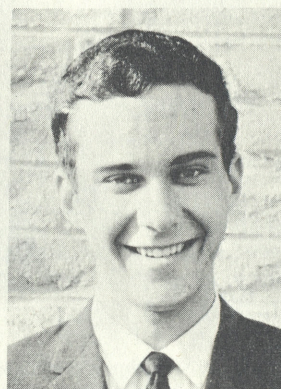
SAC meetings are held on Tuesdays at 7:00 p.m. during the school year and you are invited to attend the meetings of your student government whenever possible and participate in the discussions. This is the key to the continued success of your student government. SAC is composed of the president, vice president and secretary of the Associated Students, representatives from each school student council, one representative from the International Student Council, one representative from Inter-Hall Council, a representative from the ASI Finance Committee, the College President's representative, a representative from the Academic Senate and the ASI business manager.

SEC is composed of the ASI president, vice president, secretary, the board chairman, the Finance Committee chairman, one representative from the Academic Senate, the ASI business manager, a recorder and the appointed representative of the College president. Do look up the meetings of SEC in "The Pony" and attend a few of your student government meetings if you can. It will indeed be a rewarding experience for you and it will be a boost to the morale of those who work for you.

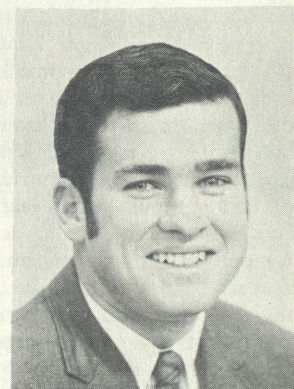
Matters related to student infractions of campus regulations and the interpretation of bylaws or codes are the responsibility of the Student Judiciary.

Student Judiciary, now in its fourth year as a branch of student government, has become a significant part of student life. The Chief Justice, an elected official, along with one Associate Justice from each school form the court. You will be impressed with Poly's student judiciary; it meets on Wednesday and Thursday nights and you are welcome to observe.

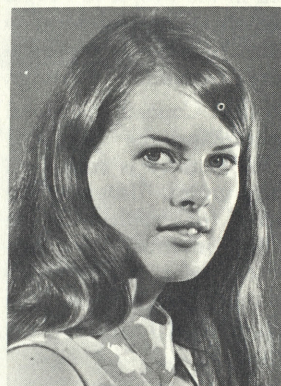
If you'd like to get started in student government by working on one of the standing committees of the ASI, stop in the ASI Office and talk to Paul Kresge, Dick



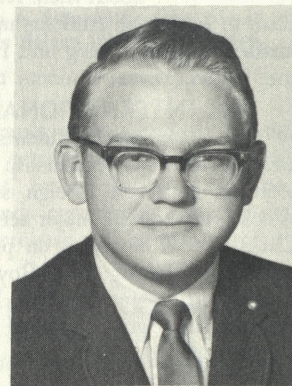
President Paul Kresge



Vice President Dick Barrett



Secretary Virginia Reed



Chief Justice Leonard Pederson

Barrett, Virginia Reed, or Leonard Pederson. They will be happy to help you get started.

The Awards Committee establishes policies and criteria for awards, recommends students for "Who's Who Among Students in American Colleges and Universities," "Mustang Awards," and coordinates senior awards, including the Gold Key award for excellence in participation in campus activities.

The Codes and Bylaws Committee reviews bylaws and codes of all student organizations and makes recommendations on codes and bylaws to SAC.

The Fund Raising Activities Committee processes applications from student organizations wishing to hold fund raising activities on campus.

The Election Committee conducts all ASI elections, enforces election rules, prepares and counts ballots and reports the results of elections to SAC.

The Finance Committee carries the responsibility for annually preparing a balanced budget for the ASI. It makes recommendations on all financial affairs referred to it by SAC.

in Student Government . . .

The Homecoming Committee plans and conducts, in cooperation with the Alumni Association a program of Homecoming activities of interest to both students and alumni.

The Leadership Conference Committee has the responsibility of planning and carrying out an annual ASI Leadership Conference.

The Rally Committee promotes college spirit by organizing the rooting section, ushering at football and basketball games, decorating for athletic events, and by selecting and working with yell leaders and song girls. It sponsors halftime stunts at football and basketball games and organizes rallies.

The Intramural Committee provides a complete intramural program for all students. Its objectives are to provide recreation, socialization, a permanent interest in sports, a means to develop physical fitness and develop group spirit. Every dormitory and club at Cal Poly has an intramural representative who participates in meetings at the beginning of each quarter to set up the quarter's intramural program. Sports offered are touch football, basketball, volleyball, softball, handball, badminton, tennis, swimming, track and weight lifting.

The Assist Committee cooperates with the Faculty Evaluation Board in administering evaluation questionnaires in classrooms and in compiling the results for data processing, publication, and distribution to students in the fall.

The Spring Sing Committee plans, promotes and presents a student musical show called "Spring Sing," the purpose of which is to provide an "intramural" singing program for the audience and a clean, competitive, fun-filled contest for the participants.

The Rose Parade Float Committee works in conjunction with the Cal Poly Pomona Rose Parade Float Committee in the planning and construction of the California State Polytechnic College Rose Parade Float.

The Student Planning Commission is a unifying body for all student construction projects on campus.

The Campus Radio Committee is concerned with the programming and engineering activities of Cal Poly's FM radio station.

College Union Board of Governors

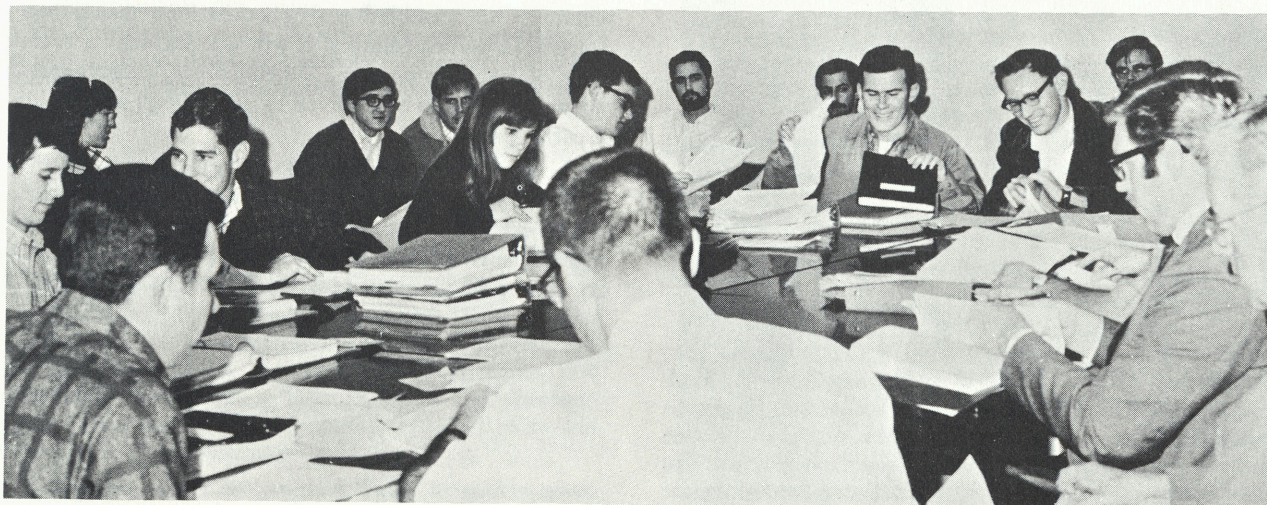
Facility management will be the prime concern of another governing body, the College Union Board of Governors. With the Julian A. McPhee Memorial College Union Building expected to open in the spring of 1970, the board will be busy with organizational and operational plans.

The CUBG is charged with the responsibility of policy making. Establishing prices for everything from billiards to bowling and determining priorities for the use of the building's various facilities are some of the decisions facing the new organization.

The voting membership of the CUBG includes 10 students, two representatives each of the Academic and Staff Senates and one representative of the Cal Poly Alumni Association. In addition, President Robert E. Kennedy, Don Nelson (Director of Business Affairs), Roy Gersten (ASI Business Manager), Gene Brendlin (Cal Poly Foundation Business Manager) and two as-yet-to-be named representatives of the Student Affairs Council and the Student Executive Cabinet.

To become CUBG members, students must submit applications. A committee screens all applications and then sends its recommendations to SAC. SAC and the college president grant final approvals to all members.

The CUBG meetings are open and interested students are invited to attend. For the time and meeting location consult *The Pony*, a weekly publication listing campus activities.



Finance Committee Deliberates Budget Requests.

College Program Board



Ray Charles in concert at Poly

College union, the campus social, cultural and recreational center is open to all students, faculty, alumni, families and friends. These are the prevailing ideas of a college union, a place for all members of the campus community to meet in a pleasant setting—to visit with friends, view a film or concert, expend some creative energy, or just relax.

Construction of the Julian A. McPhee Memorial Union is well under way. If you would like to help plan the activities which already serve the campus, the College Program Board and its committees are waiting for you.

Founded fourteen years ago, the College Program Board and its events have been providing many of the major educational, social, recreational and cultural co-curricular activities in which Poly students participate

throughout the year. Eagerly anticipating the finish of the college union building in spring of 1970, the committees are expanding their programs this year to meet the needs of an increasing student body enrollment.

Regardless of your major, you will find one or more of the College Program committees of interest to you. Dances, concerts, lectures, movies, plays, outings, art exhibits, socials, recreation and tournaments all are planned by student committees.

If you would like to get involved, come to the College Program booth on registration day or talk to your WOW counselor. Members of the Board are ready to help you with any questions you may have, and to assist you in getting involved in campus activities at the beginning of your college career.

If you miss this opportunity on registration day, come into the Activities Office and talk to the Program Counselor or College Program Board Chairman Steve Sefton. They will be happy to tell you about the many choices available to you during your first quarter at Poly.



A scene from the Drama Committee's presentation, "Hey There, Light Man."

ASSEMBLY COMMITTEE — Selects and presents several entertainment attractions each year. Recently the Brothers Four, The Seekers, Glenn Yarbrough, The Doors, Big Brother, the Holding Company, Harpers Bizarre, Ray Charles and Canned Heat were presented. If you like a voice in selecting campus entertainment, Assembly Committee is for you. *Chairman:* Jeff Tonkin.

DANCE COMMITTEE — Sponsors, schedules and coordinates all the college dances and plans several major ones during the year. This committee promises many new ideas for 1969-70. *Chairman:* Jim Nix..

DRAMA COMMITTEE — The committee recently embarked on a new venture—experimental theater—for those students who want to perform in drama productions on a smaller scale than the major drama department plays each quarter. Last year the committee presented "Hey There, Light Man!" and "The Petrified Forest." Any student interested in the back stage production or the acting aspect is urged to join Drama Committee. *Chairman:* Bob Knowles.

FILM COMMITTEE — More than 35 good films have been scheduled for showing by the committee on Friday and Saturday nights. If you'd like to help usher and select more films, join the Film Committee. *Chairman:* Bob Van Dyke.

FINE ARTS COMMITTEE — This committee sponsors such events as foreign films, art exhibits, music festivals, poetry reading, dance concerts and ballet. If you would like to help select films, hang an art exhibit or learn more about fine arts, this committee may be for you. *Chairman:* Mike Zander.

SPECIAL EVENTS COMMITTEE — Innovation and creativity are the theme of Special Events. If the other College Program committees are not set up for a new idea—this is the committee for you. Last year this committee started a very successful "Coffee House" project. *Chairman:* Bob Predmore.

OUTINGS COMMITTEE — This committee sponsors short and not-so-short excursions planned for holidays and weekends throughout the school year. Last year there were 24 outings, taken to such places as Los Padres National Forest, Yosemite National Park, China Lake, Morro Bay, the Pinnades, and the Grand Canyon. Would you believe 144 members on the Outings Committee? *Chairman:* Rod Neubert.

SPEAKERS FORUM COMMITTEE — Plans extensive speaker program of general interest to the entire student body. Last year's calendar included several members of the faculty and such personalities as Archie Moore, Felix Greene, Alex Haley and Timothy Leary. *Chairman:* Paul Backus.

RECREATION AND TOURNAMENTS COMMITTEE — Last year this group sponsored a pie eating contest, pumpkin carving contest, Monte Carlo night, kite flying contest, soap box derby, pool and ping pong tournaments. *Chairman:* Randy Dettmer.



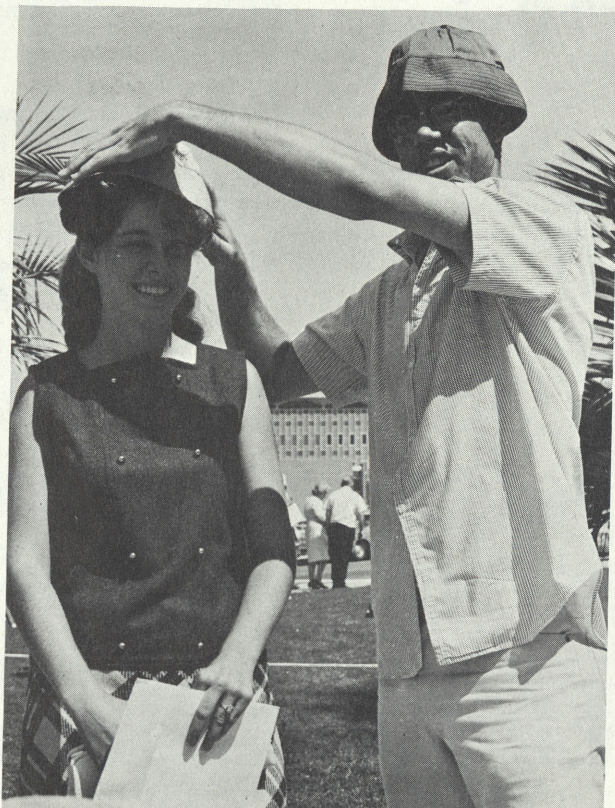
Art shows are cultural activity sponsored by Fine Arts Committee.



Forum Committee presents stimulating speakers.

... Opportunity for Campus Participation

Welcome Week Board



Okay — so I'm a "new student!"

Week of Welcome . . .

The first and probably most important activity in which the new Cal Poly student participates is the "Week of Welcome," (WOW). This is a student sponsored activity designed to assist new students in becoming a part of the Cal Poly family. Welcome Week helps you to make an easier adjustment to your new locale, concentrated studies, classes and co-curricular activities. This week of diversified activities will acquaint you with many new faces and help you gain that "at home" feeling on campus.

During Welcome Week you will get acquainted with student leaders, faculty, staff members and other new students. You will meet the president of the college, school deans, head of your department and many other faculty members. You'll be given the opportunity to ask questions about the curriculum, student affairs, and Cal Poly traditions.

The Welcome Week program is designed as an orientation on campus and may be supplemented by spending two and a half days of this program at one of our two Welcome Week Camps.

Campus Welcome Week begins with the opening of the WOW Booth on Sunday, September 14, at 9:00 a.m. Immediately following registration, tours of the campus are available to new students and parents alike.

When you arrive on campus, register at the Welcome Week Information Booth in front of the Men's Gym. When you register at the booth you will be assigned to a WOW Club with 35 other new students and three Welcome Week student counselors. These counselors represent more than 250 students selected from applicants on the basis of academic and social achievement, plus demonstrated leadership qualities, who will be returning to campus early to assist you during Welcome Week.

The fee for the Welcome Week program on campus is \$15. This includes three luncheons, a deluxe barbecue, movies, and get acquainted stumps, a sports day, watermelon feed, beach party, tours of the campus, a Hootenanny and a dance concert on Saturday night. No advance registration is necessary for Welcome Week on campus; this fee is paid when you register at the Welcome Week Information Booth.

Welcome Week fees are kept to a minimum so that all students can participate in orientation. Residence halls will be open beginning at 2 p.m. on Friday, September 12. Check in will be from 2 p.m. to 6 p.m. on Friday and 9:30 a.m. to 6 p.m. Saturday and from 10 a.m. to 6 p.m. each day thereafter. There is no extra charge for occupancy during this period.

"Invitation to Thought" speaker holds attention.





Campfire discussion at Ocean Pines — friendly and fun.

Welcome Week Camp

The Welcome Week Camps are held 40 miles from the campus at Camp Ocean Pines and Camp Pinecrest near Cambria, located on beautiful sites amid tall pines near the ocean.

A student staff of 25 counselors working cooperatively with faculty advisors are in charge at the camp. At least one counselor resides in each of the camp's cabins. Campers participate with counselors in informal discussions on student government, adjustment to college, and participation in co-curricular activities. Camp fires, evening songs, dancing and skits are all part of the program which will make the two and a half days spent at Welcome Week the perfect introduction to college life.

Limited space permits only 400 new students to attend camp. If you would like to have the wonderful experience of camp, please fill out and return the blank in the Welcome Week brochure immediately.

The total fee for those who also attend camp is \$30. This includes all meals while at camp and the campus activities before or after the camp sessions. There are two camp sessions — Saturday, September 13 to Monday, September 15, and Monday, September 15, to Wednesday, September 17.

When you return from camp, your WOW Club counselors will return with you, so that you may join right in with campus WOW activities.

The WOW brochure you have received from the Admissions Office tells in detail about the Welcome Week program at camp and on campus. Read the brochure carefully for it will answer many of your questions about orientation at Cal Poly. If you have questions after reading the brochure, write to the Activities Office, Cal Poly, for further help.



WOW counselors are eager to assist new students.

Dates to Remember . . .

Saturday, Sept. 13— *1st Camp Session Begins*

Sunday, Sept. 14— *Campus Welcome Week Begins*

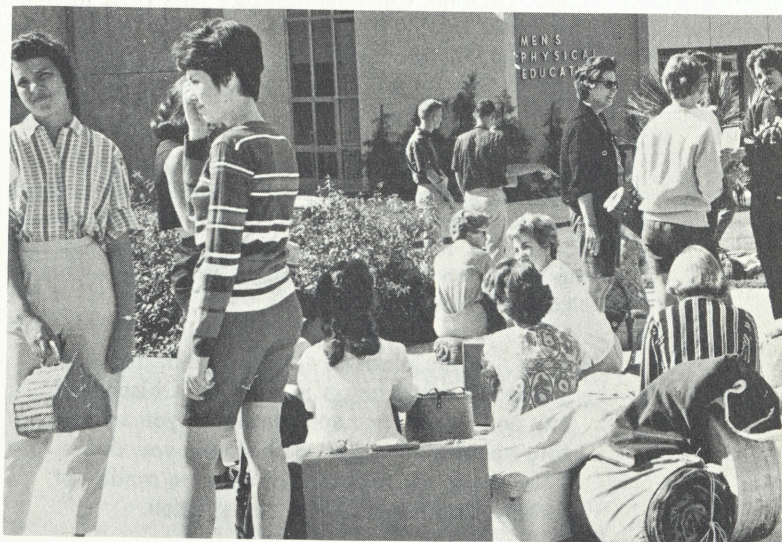
Monday, Sept. 15— *2nd Camp Session Begins*

Thursday, Sept. 18— *See Advisors. Registration for those not previously registered.*

Friday, Sept. 19— *Registration for those not pre registered*

Monday, Sept. 22— *Classes Begin*

Goodbye hometown, Hello Cal Poly!



. . . Your opportunity to know Cal Poly better

Welcome Week Calendar . . .

Friday, September 12 —

Residence Halls open 2 p.m. - 6 p.m.

Saturday, September 13 —

Residence Halls open 9:30 a.m. - 6 p.m.
First Camp Session Begins

Sunday, September 14 —

WOW Booth opens 9 a.m.
First WOW Club Meeting 1 p.m.
Reception for Parents 1 p.m.
Assembly "Invitation to Thought"
Coffee Hour

Monday, September 15 —

WOW Booth opens 9 a.m.
Second Camp Session Begins
Campus Tours
WOW Luncheon
People Rally
Residence Hall Meetings
Movie

Tuesday, September 16 —

WOW Booth opens 9 a.m.
WOW Luncheon
Volleyball Championship
Campus Tours
"P" Climb

Wednesday, September 17 —

WOW Booth opens 9 a.m.
WOW Luncheon
Campus Tours
Dean's Assembly
Residence Hall Meeting
Sports Day
Watermelon Feed

Thursday, September 18 —

See your Advisors
Registration for those not previously registered
Hootenanny and Stomp
Activity Display
Get Acquainted Stomp

Friday, September 19 —

Registration for those not previously registered
Beach Party
Stomp

Saturday, September 20 —

Dance Concert, Men's Gym

Sunday, September 21 —

Student Night at San Luis Obispo Churches

Monday, September 22 —

Classes Begin

New Students' Check List . . .

Starting your college career is a very exciting and challenging experience. Some of the things you should consider before coming to college are listed below. We hope it will help you get off to a better start.

1. Take the Cal Poly guidance tests prior to coming to school in the fall. If you are unable to take the tests during the summer, stop by the Counseling and Testing Center for an appointment to take them right after fall quarter begins.

2. A card will be mailed to you requesting that you have a medical examination prior to enrolling in college. Arrange for a medical examination with your own family physician and return the required card to our Health Center. Plan on joining the health insurance programs offered by the College.

3. **Make plans to set up a bank account. There are many banks in San Luis Obispo and any one would be happy to assist you in setting up whatever type of account you desire. Your check for registration must be made out for the exact amount of registration.**

4. Make your housing arrangements early. Space on campus is limited. Living off campus may involve providing your own furniture.

5. There is no bus service and limited taxicab service in San Luis Obispo which should be taken into consideration when making housing arrangements.

6. Check the size of your new living quarters and storage space when considering just how much clothing and equipment you will bring from home.

7. **Plan to take advantage of college life, both academically and socially. Take some time to get to know your instructors, and take full advantage of the excellent co-curricular offerings at Poly.**

8. If you are looking for a job, our Placement Office will be of great assistance.

9. When you have everything under control, relax and get ready to enjoy the wonderful experience of going to college. The faculty, staff, and students are awaiting your arrival and anxious to make it a rewarding and enriching one.

10. Participate in the Welcome Week program. Prior to beginning your academic studies the students at Poly have arranged to meet with you in WOW clubs and help acquaint you with the Cal Poly traditions, meet the staff and answer any questions you may have. For a bird's eye view of what's in store at our Welcome Week program we have listed a schedule of Welcome Week events. Don't miss a minute of it!

Music Board of Control



The Women's Glee Club

If you like to sing or play an instrument, try out for one of Cal Poly's famous musical organizations. We're proud of each organization, and you soon will be, too.

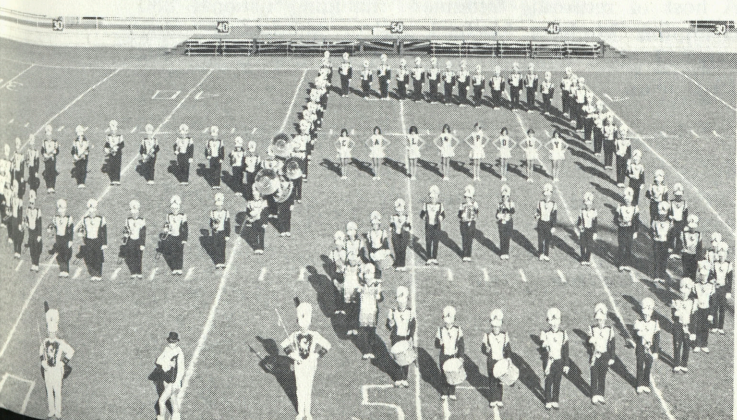
Tryouts will take place Sept. 18-19, 22-25. Look for times and places in "The Pony." If you have an instrument, bring it with you. If you don't own one, the department has several fine instruments.

The Music Board of Control is composed of representatives from each of the music groups. This Board in turn sends one representative to the ASI governing body.

Each year thousands of people attend the many performances of the Music Department. The Men's Glee and Collegians, the Women's Glee, and the Symphonic Band go on three separate tours of California. Each group is noted statewide for its high caliber performances. Monthly College Hour Concerts, the Winter and Spring Band Concerts and presentations by the Chamber Orchestra are campus features. The 29th annual Home Concert in April highlights the program. The Music Department also produces two stereophonic LP record albums which are sold in the spring.

MEN'S GLEE CLUB is a large, but closely-knit group. Surprisingly, over half its members have never sung in a glee club or chorus previously. Returning members seek newcomers who possess pleasant tone quality,

The Mustang Marching Band is rated among the best on the coast.



ability to sing a part, and demonstrate congeniality and faithfulness. The celebrated **MAJORS AND MINORS**, a 12-man chorus specializing in barbershop music, and the **COLLEGIATE QUARTET**, one of the campus favorites, are two groups within the outstanding ensemble.

Versatile is the 100-piece **CAL POLY BAND**. Attired in flashy new uniforms, the group functions as the high stepping **MUSTANG MARCHING BAND** during football season. Original shows are performed using the latest popular music arranged by its own professional arranger. As a **SYMPHONIC BAND**, the group performs many concerts on tour and on campus. Specialty groups include the **JAZZ BAND**, **PERCUSSION ENSEMBLE**, **DIXIELAND BAND** and **PEP BAND**. Experience is a prerequisite for membership.

WOMEN'S GLEE CLUB, also a large, closely-knit organization, appears in the Home Concert, at College Hour Concerts and makes a Central Coast tour. The **WOMEN'S SEXTET**, a highly acclaimed specialty group, complements the club.

THE COLLEGIANS, a smooth sounding 15-piece dance band, play for college dances, at Home Concert and on tour. Members choose new men. There are vacancies.

THE CHAMBER ORCHESTRA is composed of students and faculty who continually delight concert-goers with unique and varied performances.

The **COLLEGE CHAMBER SINGERS** is a newly organized group at Cal Poly specializing in the performance of madrigals and modern works. The ensemble is made up of twenty men and women.

For answers to your questions about any music organization, see Mr. Harold "Davy" Davidson, department chairman; Mr. William Johnson, band director, or Mr. Clifton Swanson, orchestra director, or Mr. John Russell, director of Chamber Singers.

Board of Athletic Control

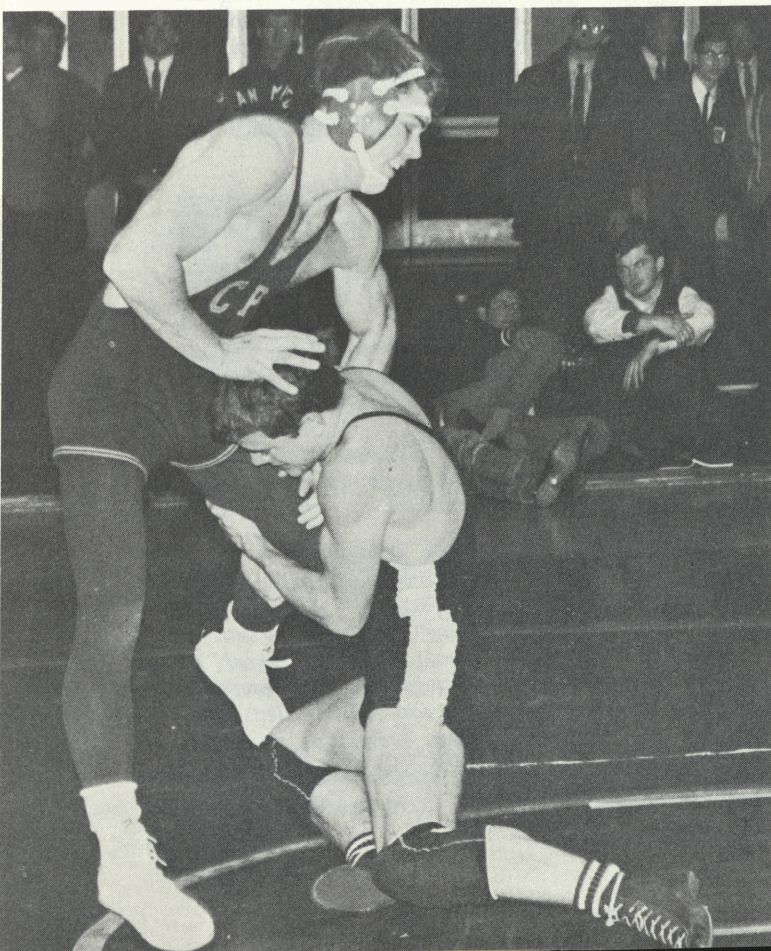
Cal Poly is proud of its athletic program and its athletes. The program is an integral part of the total physical education program, an important part of collegiate life, a motivator for other students to participate in collegiate or intramural sports and a builder of esprit de corps among students, alumni, faculty and staff.

For the second consecutive year, Cal Poly is the only College Division school in the nation to win more than one NCAA championship in 1968-69. The Mustangs are the defending wrestling and track and field champions. Cal Poly accomplished the same feats in 1967-68.

Cal Poly is a member of the California Collegiate Athletic Association (CCAA). Other members are San Fernando Valley State, Cal State Fullerton, Cal Poly Pomona and UC Riverside.

Joe Harper is in his second season as head football coach. Last year his gridgers posted their best record (7-3) in a decade. This fall the Mustangs will have 30 returning lettermen, including all-CCAA linebacker Lee Treadwell. Ten top JC transfers, a handful of top-flight redshirts and a few promising prospects from the 1968 frosh will add to the Mustang grid fortunes this season.

Junior John Finch (standing) is a top Mustang grappler.

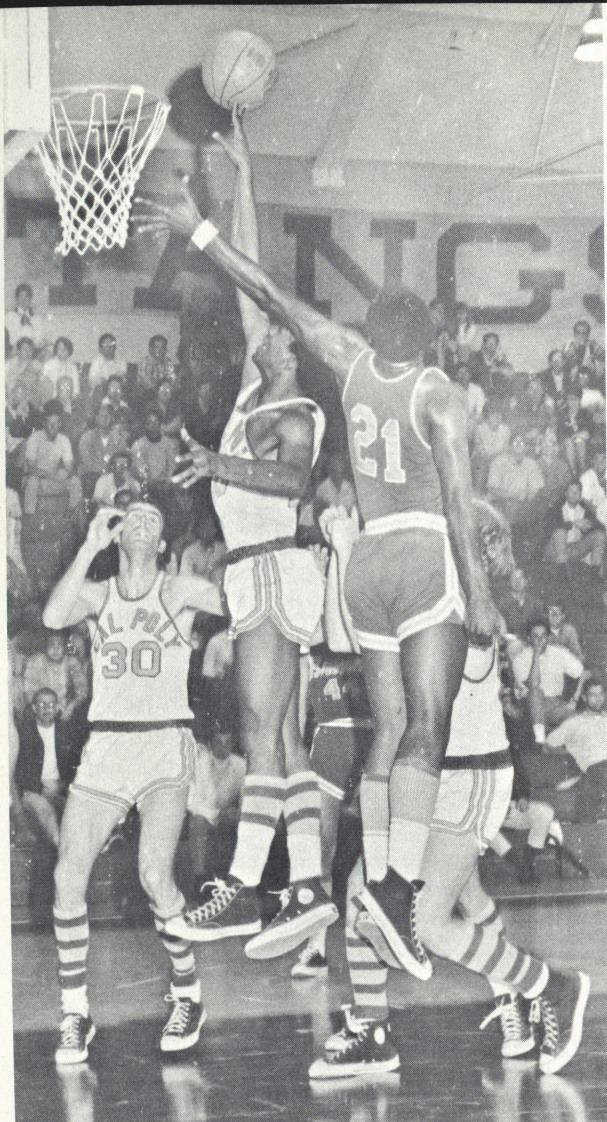


All-CCAA guard Brent Crabb leads the interference for quarterback Gary Abate.

Vaughan Hitchcock, one of the nation's most successful wrestling coaches, has developed a highly regarded mat program. His teams have won the NCAA College Division titles, three of the past four years and placed fifth in the NCAA University meet last year. Highlighting the 1969-70 slate will be home matches against Michigan State, Brigham Young and Southern Illinois.

Dick Purcell directed the Mustang thinclads to their second straight conference and national crowns last spring. A host of returning lettermen, including national 880 champion Mathyas Michael and a number of other national place winners, will form the nucleus for the 1970 team.

"New" will be the key word in Cal Poly basketball this winter. Neale Stoner begins his first campaign as the "new" head coach. The Mustang roster will be stocked with several "new" faces, most will be JC transfers. During this 26-game season Stoner's style of roundball will give the Mustang a "new" look.



Rebounding is important to the Mustangs.

Mustang athletic teams take part in CCAA play in football, cross country, water polo, basketball, wrestling, swimming, track, baseball, golf and tennis. Poly also competes in a soccer league.

All students, regardless of major, are required to complete three (3) academic units of physical education. P. E. is both a state and general education requirement. Numerous activities are taught by P. E. department staffers. Students should refer to their major requirements for guidance in fulfilling the P. E. obligation.

Cal Poly's varsity coaches are:

Augie Garrido, baseball; Neale Stoner, basketball; Frank Egenhoff, cross country; Joe Harper, football; Dr. Charles Hanks, golf; Mike Cirovic, soccer; Richard Anderson, swimming and water polo; Ed Jorgensen, tennis; Dick Purcell, track; and Vaughan Hitchcock, wrestling.

1969 FOOTBALL SCHEDULE

Sept. 20	San Francisco State	-----	There
Sept. 27	Western Washington College	-----	Here
Oct. 4	Boise State College	-----	Here
Oct. 11	Simon Fraser University	-----	Here
Oct. 18	Fresno State College	-----	Here
Oct. 25	San Fernando Valley State	-----	There
Nov. 1	Cal State Long Beach (Homecoming)	---Here	
Nov. 8	University of Montana	-----	There
Nov. 15	UC Santa Barbara	-----	Here
Nov. 22	Cal Poly Pomona	-----	Here

1969-70 HOME BASKETBALL SCHEDULE

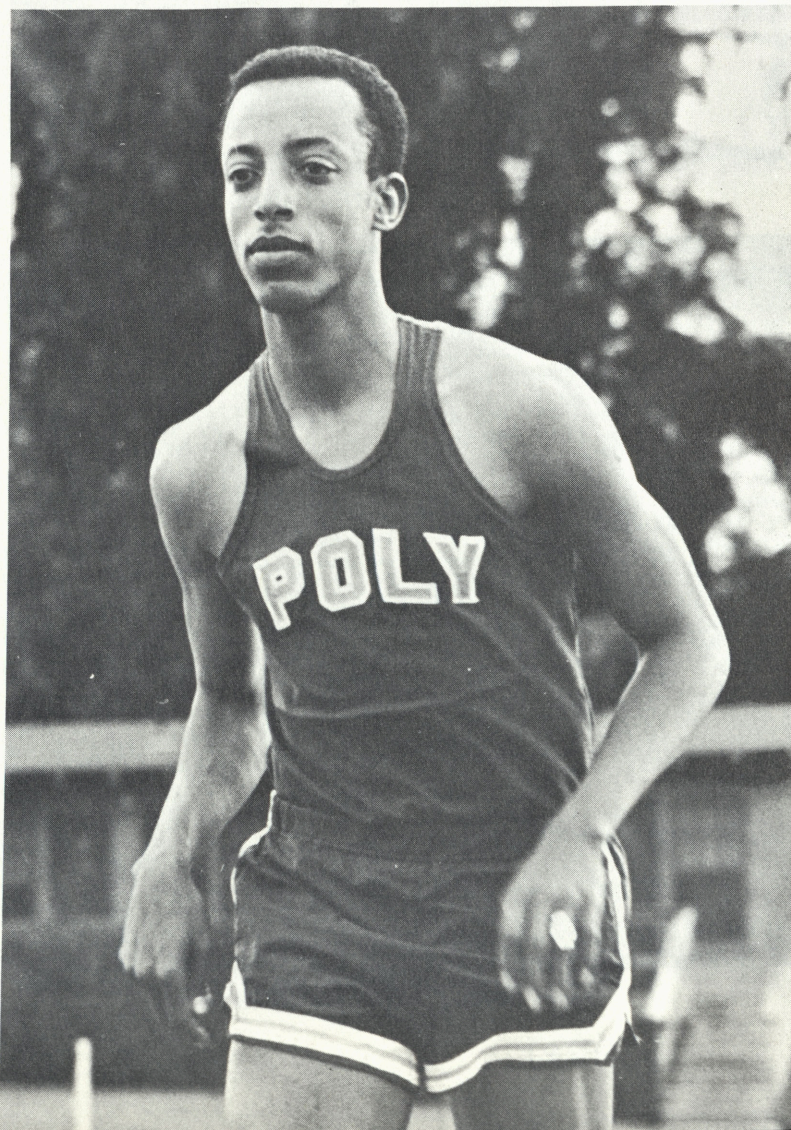
Dec. 1	UC Santa Barbara
Dec. 5	Cal State Hayward
Dec. 9	Fresno Pacific
Dec. 19	Sonoma State
Dec. 20	UC San Diego
Jan. 3	University of Redlands
Jan. 16	San Fernando Valley State*
Jan. 23	Fresno State
Feb. 13	UC Riverside*
Feb. 14	Cal Poly Pomona*
Feb. 27	Cal State Fullerton*
Feb. 28	UC Irvine

*—Denotes CCAA games.

1969-70 HOME WRESTLING SCHEDULE

Nov. 25	UC Santa Barbara
Dec. 2	San Francisco State
Jan. 8	UC Davis
Jan. 10	Michigan State
Jan. 22	Chico State
Jan. 28	San Fernando Valley State
Feb. 13	Southern Illinois University
Feb. 14	Brigham Young University
Feb. 17	Fresno State
Feb. 21	Cal State Fullerton
Feb. 24	Stanford University

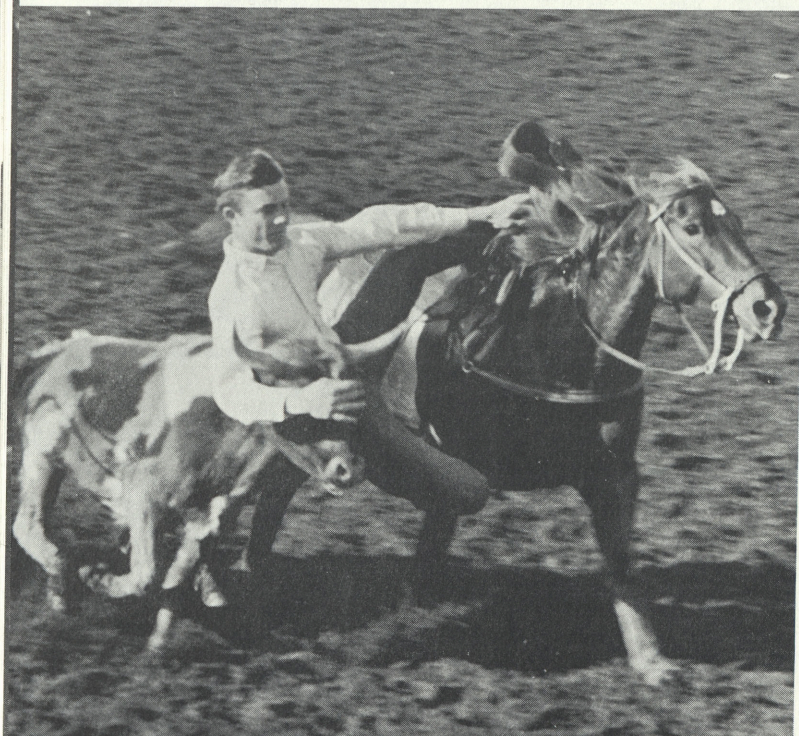
Freshman Mathyas Michael won the 880 as Cal Poly captured its second straight NCAA track title in 1969.



Poly Royal Board



Barbara Baer, Poly's NIRA barrel racing champ.



Steer Wrestling . . . a Poly Royal Rodeo feature.

Annually the biggest event on the school calendar at Cal Poly is Poly Royal. During this two-day weekend event held late in April, students exhibit the results of their learning experiences of the past year. Described as "A Country Fair on a College Campus," Poly Royal is an event for the whole family.

NOW IN its 38th year, the annual open house displays Poly's instructional departments and the students' other activities in one big show case. Each of the College's 5 schools and 40 instructional departments has an exhibit indicative of the character of its subject matter and methods. Visitors see students engaged in the "learning by doing" process in which Cal Poly is a pioneer institution.

Co-curricular activities are represented not only by exhibits of the student organizations, but also by the activities themselves in such areas as athletics, music and dramatics.

An intercollegiate rodeo is one of the highlights of the campus extravaganza. Since its founding in 1949 Poly has dominated the National Intercollegiate Rodeo Association's Western Region. Both men's and women's teams captured regional championships in 1969. The men took fifth and the women third in the 1969 NIRA championships at Deadwood, South Dakota in June.

Band concerts, an art show, livestock judging and showmanship contests, horse show, a play, water show, several dances and gala carnival are other prominent events on the open house festival agenda.

DEPARTMENTAL exhibits, which include demonstrations and projects worked on by students throughout the year, require hundreds of hours of planning, organization and preparing. Since Poly Royal is a student event, each student within his department has a responsibility in the planning and progress. The eve of Poly Royal finds students working feverishly to put the finishing touches on displays and exhibits. Attendance at last spring's 37th annual event was over 65,000.

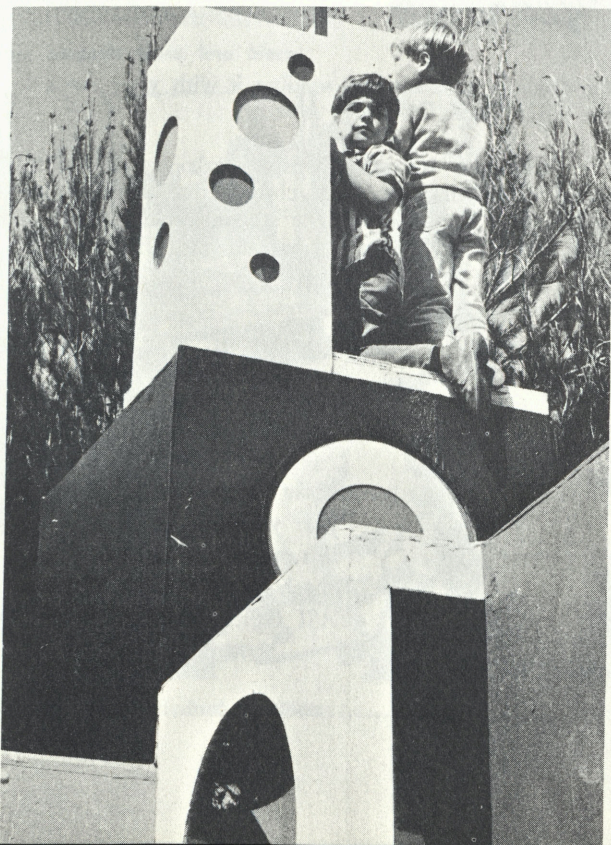
Displays span the gamut from today's computer science technology to a museum of antique printing presses and a museum of farm equipment.

The Poly Royal Board, which is the governing body for the event, is composed of representatives from many campus groups. No doubt, you will join one of the 150 or more clubs on campus, nearly all of which take an active part in Poly Royal. The Board invites you to take an active interest in this event.



Pretty girls prepare corsages at the Ornamental Horticulture display

Super toys attract youngsters.



Poly Royal Coronation Ball

A rewarding experience is a walk through Architecture Patio.





Director, ASI Business Affairs Roy Gersten and Mrs. Phyllis Stewart, accountant, are people you'll get to know.

The ASI Office

The Associated Students, Incorporated Office is located in the Temporary College Union across from the Administration Building. There you will find the ASI business manager, the four student body officers, the ASI accountant and several stenographers and clerks. You will also find a warm welcome awaiting you, for the ASI Office exists to meet the needs of student government.

Roy Gersten, director, ASI business affairs, is employed by the Associated Students to be its fiscal officer and to administer its budget. He and Mrs. Phyllis Stewart, ASI accountant, help all recognized groups with their expenditures and bookkeeping. The Associated Students Information Officer directs and arranges publicity for the budgeted groups of the Associated Students and handles the college sports information program.

You will soon discover that \$20.00 of your yearly fee goes toward your Associated Students card.



Mrs. Cathie Jaroz, typist, (left) and Mrs. Ethel Spry, ASI secretary-receptionist, will be happy to assist you.

The money paid for your ASI card is combined with that of more than 9500 students attending Cal Poly and is used to finance more than 70 student activities. These include athletics, homecoming, the glee clubs and bands, the student newspaper, the student yearbook, judging teams, Poly Royal, College Program and Welcome Week.

The ASI Office provides the following services: (1) Mimeographing (minutes, meeting notices, publicity folders) for clubs and ASI budgeted groups. (2) Post office boxes for all student organizations. (3) A directory of student officers of all recognized groups. (4) Tickets to student body functions — athletic events, concerts and dances. (5) Files of records, constitutions and reports of all recognized organizations. (6) Financial services and (7) information on almost anything involving student affairs.

The College Yearbook

Along with the associations you will maintain after graduation through your Alumni Association are those you remember through your college yearbook — the El Rodeo.

If you wish to have a copy of "El Rodeo," you should place your order now by filling out and detaching

the order form below and sending it with your check to the ASI Office, Cal Poly.

"El Rodeo" is a comprehensive yearbook with over 250 pages covering residence halls, clubs, activities and student government groups. It will be a memorable souvenir of your first year at Cal Poly, so don't miss getting your copy.

The 1970 EL RODEO (College Yearbook) ORDER BLANK

(YOUR NAME)

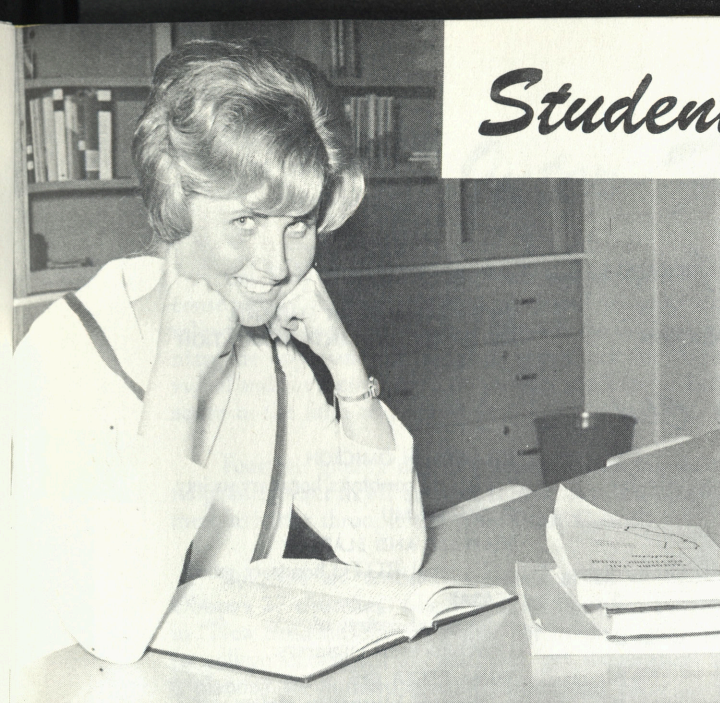
(YOUR ADDRESS)

Make check payable to Associated Students—Cal Poly—El Rodeo)

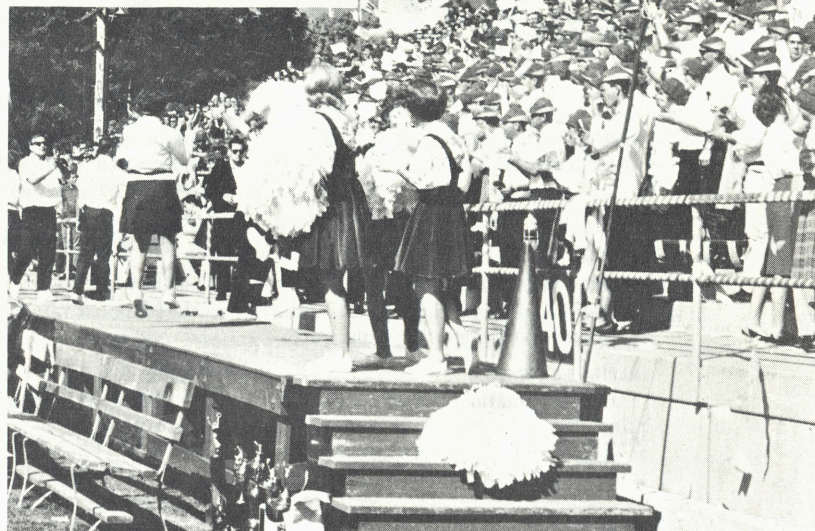
\$6.50

Make sure you receive your yearbook. Return this order blank and a check for \$6.50 to the ASI Office, Cal Poly.

Student Activities



Hittin' the books . . . what it's all about.



Happiness is . . . a Mustang touchdown.



The campus: where students learn, love blooms.



Fun at the dunes.



Rendezvous at the kiosk.



College Hour . . . fresh air stomp.



Majors and Minors frolic on Tiger's Folly.

Special Interests . . .

AFRICAN STUDENTS ASSOCIATION
ARAB STUDENTS CLUB

ALPHA PHI OMEGA

National service fraternity for college men with scouting experience.

ALPHA PSI OMEGA

Honorary national drama society.

ALPHA ZETA

National agricultural service fraternity.

BLUE KEY

National service honor fraternity for men.

ALPHA GAMMA RHO
AMATEUR RADIO CLUB
ART CLUB

BLOCK P SOCIETY

Lettermen's club.

CAISSA CHESS CLUB

CALIFORNIA COLLEGE REPUBLICANS

CAL POLY DRILL TEAM

ROTC group which performs locally and nationally.

CAL POLY 4-H CLUB

CAL POLY RIFLE AND PISTOL CLUB

CAMERA GUILD

Sponsors photographic contests and exhibits, supervises darkroom.

CHI GAMMA IOTA

Ex GI's.

CORINTHIANS

Yacht club for those interested in sailing.

FARM CENTER

Campus branch of the San Luis Obispo County Farm Bureau.

GRADUATE CLUB

HUI O'HAWAII

Promotes understanding and fellowship among Hawaiian students.

JUDO CLUB

AG BUSINESS CLUB

AG ENGINEERING SOCIETY

AMERICAN CHEMICAL SOCIETY

AMERICAN SOCIETY OF AGRICULTURAL ENGINEERS

AMERICAN SOCIETY OF HEATING, REFRIGERATION AND AIR CONDITIONING ENGINEERS

AMERICAN INSTITUTE OF AERONAUTICS AND ASTRONAUTICS

AMERICAN INSTITUTE OF ARCHITECTS

AMERICAN INSTITUTE OF PHYSICS

AMERICAN SOCIETY OF TOOL AND MANUFACTURING ENGINEERS

AMERICAN WELDING SOCIETY AND AMERICAN SOCIETY OF METALLURGY

ASSOCIATION FOR COMPUTING MACHINERY

International Groups

IRANIAN STUDENTS CLUB

PAKISTAN STUDENTS ASSOCIATION

POLY CHI (Chinese)

Service-Honor Clubs

CARDINAL KEY

National service honor society for women.

CIRCLE K

National campus Kiwanis Club.

GAMMA SIGMA SIGMA

Honor service sorority for women.

KAPPA MU EPSILON

Honorary math society.

PHI KAPPA PHI

National honorary society for outstanding academic achievement.

UNION OF NIGERIAN STUDENTS

VIETNAMESE STUDENTS ASSOCIATION

PHI UPSILON OMICRON

Home Economics honorary society.

PI GAMMA MU

SCABBARD AND BLADE

National ROTC honorary group.

SCARAB

National society of architectural engineers.

SIGMA DELTA CHI

National journalism society.

SIGMA PI SIGMA

TAU SIGMA

Engineering honor society.

Hobby and Interest Clubs

KAYDETTES

Women's drill team which performs locally and nationally.

MUSTANG AVIATION CLUB

PEOPLE TO PEOPLE

Promotes understanding and respect with peoples of the world.

POLY GOATS

Jeep club.

POLY PENGUINS

Campus motorcycle club.

POLY SKINDIVERS

Members go on diving trips around the county, hold abalone fries and other social events.

POLY TURTLES

For those interested in roadsters, hot rods and auto mechanics.

POLY TWIRLERS

Open to all interested in square dancing and those seeking instruction.

RALLY CLUB

Campus pep organization.

RALLYE MASTERS

Plan, present car rallies.

RANGE RIDERS

Horseback riding.

RODEO CLUB

Promotes intercollegiate rodeo and horse events.

RUGBY CLUB

SEMPER FI CLUB

U.S. Marine Corps platoon leaders organization.

SKI CLUB

Sponsors trips to nearby ski lodges.

SKIDIOTS

Water ski club.

SPORTS CAR CLUB

Sponsors rallies and trips to nearby road races.

STUDENT WIVES CLUB

For married students' wives. Sponsors social, educational and service activities.

WOMEN'S ATHLETIC ASSOCIATION

For all women interested in sports activities.

YOUNG DEMOCRATS

YOUNG FARMERS

Affiliated with California Young Farmers Association.

YOUTH FOR A NEW AMERICA

Departmental Clubs

BOOTS AND SPURS (Animal Husbandry)

BETA BETA BETA (Biological Sciences)

C A H P E R (Physical Education)

COLLEGIATE FFA

CROPS CLUB

CUTTING AND REINING

DAIRY CLUB (Los Lecheros)

DIETETICS CLUB

ENGLISH CLUB

FARM MANAGEMENT CLUB

FOOD PROCESSING CLUB

HOME ECONOMICS CLUB

INDUSTRIAL ENGINEERING CLUB

INSTITUTE OF ELECTRICAL AND ELECTRONICS ENGINEERS

MATH CLUB

MAT PICA PI (Printing)

MECHANICAL ENGINEERING SOCIETY

NATURAL RESOURCES CLUB

ORNAMENTAL HORTICULTURE CLUB

POLY PHASE (Electrical Engineering)

POULTRY CLUB

PRESS ASSOCIATION

STUDENT CALIFORNIA TEACHERS ASSOCIATION

SOCIETY FOR ADVANCEMENT OF MANAGEMENT (SAM)

SOCIAL SCIENCE CLUB

SOCIETY OF AUTOMOTIVE ENGINEERS AND MECHANICAL ENGINEERS

SOIL CONSERVATION SOCIETY

SOILS CLUB

INDUSTRIAL TECHNOLOGY SOCIETY

Inter-Faith Council

Cal Poly is a state-supported, nonsectarian college; consequently it does not have a chapel or programs of religious worship on campus. However, the College recognizes the importance of religious experience for the individual and for society, and encourages students to become active in the faith of their choice.

Fourteen groups now participate in striving to make religion relevant in all areas of student life and coordinate their activities through the Inter-Faith Council.

Students are cordially received at all of San Luis Obispo's 27 churches. Many of these churches participate in "New Student Church Night" by holding open houses for college students. This year, this "get acquainted" night is planned for Sunday evening, September 21.

Cal Poly religious organizations are: Baha'i Club, Baptist Student Union, Campus Advance, Canterbury (Episcopal), Chi Alpha (Assembly of God), Christian Science Organization, Gamma Delta (Missouri Synod Lutheran), Hillel Club (Jewish), Inter-Varsity (Christian Fellowship), Lambda Delta Sigma (Latter Day Saints), Lutheran Students Association (American), Muslim Student Association, Newman Club (Catholic) Wesley Foundation (Methodist), Westminster Collegiate Fellowship (Presbyterian).

Students desiring information about any particular group may secure information through the Activities Office or by addressing an inquiry to the Inter-Faith Council, Temporary College Union.

Collegiate Codes

Cal Poly is proud of the high standard of ethical values maintained by its students. This high standard is not maintained through lengthy written edicts or statements from College administrators on how students should act. Rather, it develops from a sincere understanding on the part of the students themselves that their actions bring credit or discredit to themselves.

It is the sincere hope and expectation of your fellow students and the College that your values, too, will reflect the same high standards. The College feels the following minimum standards are necessary as a guide to assure the well being and reputation of the students.

In general, you will be expected to conduct yourselves as mature young men and women. Any behavior that reflects adversely on the individual, his group or the College is not in good taste. Briefly, the College will not tolerate dishonesty, drinking on the campus, or being on the campus in an intoxicated condition.

Any student may be placed on probation, suspended, or expelled for one or more of the following causes:

- (a) Disorderly, unethical, vicious, or immoral conduct.
- (b) Misuse, abuse, or destruction of state, foundation or personal property.
- (c) Violations of motor vehicle laws, especially where grossly serious violations or repeated minor violations are involved.
- (d) Infringing upon the rights of others to pursue their normal activities as students or employees of the college.

El Corral Bookstore

The El Corral College Bookstore is located in the library annex. There you'll find all the textbooks and supplies that are needed for your classes, and the most complete selection of reference books in this area.

For your convenience the El Corral carries a wide variety of personal items such as aspirin, toothbrushes, hair spray, and soaps. Also available are various special services which include film processing, mimeographing for class projects, and special ordering of books that are not in the regular stock.

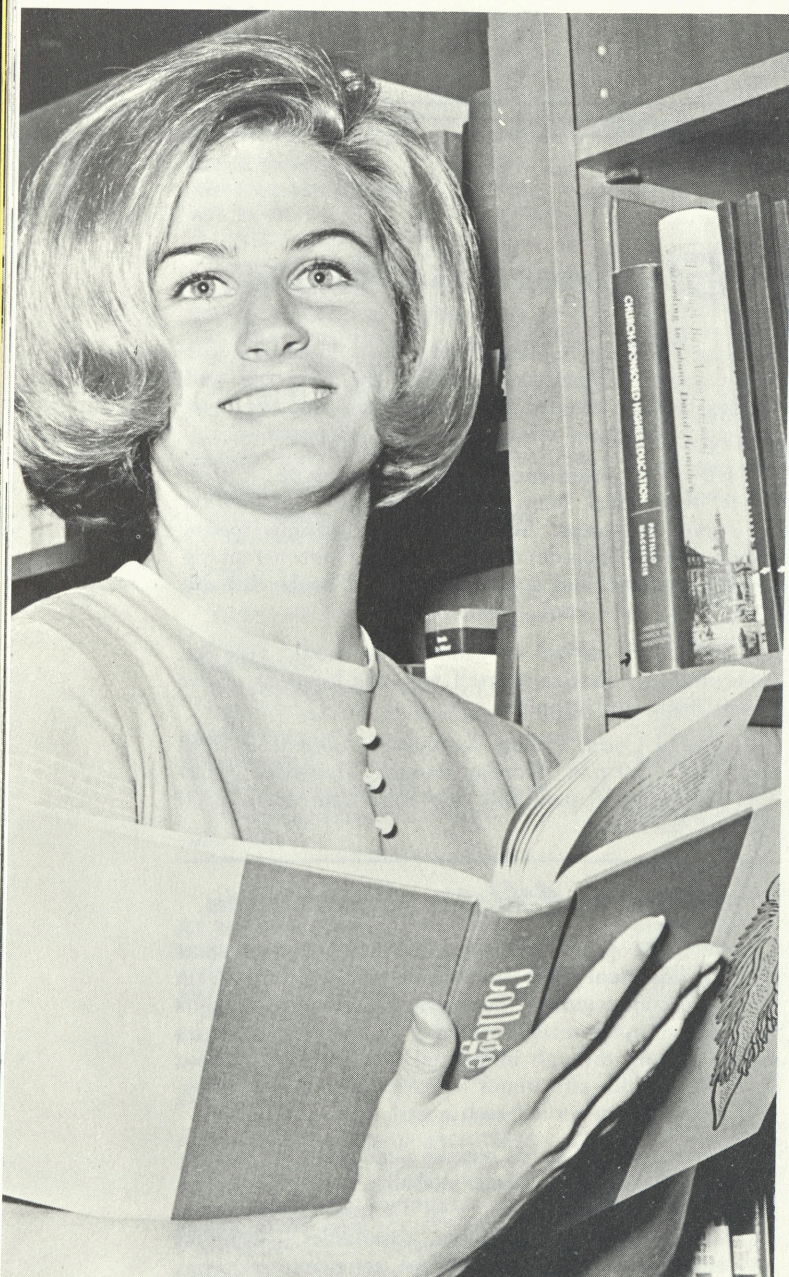
Upon your arrival on campus you should visit the bookstore to familiarize yourself with the locations of the various books and supplies.

The El Corral College Bookstore is open from 7:45 a.m. until 7:30 p.m. Monday through Thursday. Friday 7:45 a.m. to 4:30 p.m. and from 8:00 a.m. until 12:00 noon on Saturday.

Women's Athletic Association

WAA is open to all women students. A team sport and an individual sport are offered each quarter. Team sports are conducted on Tuesdays. Co-educational sports offered are synchronized swimming and fencing. Women should sign up through intramural representative in your residence or with off-campus representative. Co-ed recreation nights are sponsored each quarter.

Intercollegiate sports activities include field hockey, tennis, basketball, volleyball, softball, fencing and track. Meets are held with colleges in Central and Southern California. Archery, badminton, gymnastics, swimming and modern dance are other WAA activities.



Your College Library ... A Learning Place

Your College library provides an excellent and expanding workshop, staffed with professional librarians to assist you in finding information.

The Dexter Memorial Library facility offers 1,200 reader stations. The 270,000 cataloged items are housed on four floors of bookstacks.

A bibliographic center, group study rooms, typing rooms, faculty reading rooms, and a large curriculum library are provided in addition to the other regular features of an excellent modern college library.

CAL POLY has the open stack system, allowing students to select their own books and to browse. The best way to get acquainted with your library is to use it. A short time spent in learning about the library early in your college career can save you many hours as you prepare class assignments. It will help you to use other libraries as well.

Registration includes library privileges. Your student body card is your library card. Books are loaned for two-week periods, subject to renewal, provided there are no requests by other library patrons. Consult, *Know Your Library, A Guide to the Resources and Services of the Library* . . . for additional information.

LIBRARY HOURS are:

Monday through Thursday — 7:45 a.m. to 10 p.m.

Friday — 7:45 a.m. to 5 p.m.

Saturday — 8 a.m. to 5 p.m.

Sunday — 1 p.m. to 10 p.m.

Between sessions, during examination periods and summer quarters — Hours as posted.

Closed evenings before holidays.

Relaxation . . . Poly Style

On the Campus . . .

Your leisure time should be one part of your planned program at Poly. On the campus and throughout the county there are many opportunities for recreation.

INTRAMURALS — Residence hall and club groups compete in many sports, including softball, volleyball, touch football, basketball, wrestling, track and field, and swimming. Individual sign-up intramurals may be set up in tennis, judo, handball, weight lifting, table tennis, badminton, and cross country. Each residence hall club has an intramural manager. Keep in touch with him regarding the schedules for these sports.

SWIMMING — The Cal Poly swimming pool (adjoining the Crandall Gym) is open for recreational swimming Monday through Friday 3:00 to 4:00 p.m., Wednesdays, 7:00 to 9:00 p.m. and Sundays, 2:00 to 4:00 p.m. The sun deck outside is available for basking, too.

TENNIS — Cal Poly has many tennis courts. Bring your own tennis racquet.

In the County . . .

BEACHES — The closest beaches are Avila Beach and Pismo Beach (Highway 101 South) and Morro Bay (Highway 1 North).

BOWLING — Bowling alleys are located in San Luis Obispo at 1234 Laurel Lane, in Atascadero at 5730 El Camino Real, in Paso Robles at 1329 Spring, and in Pismo Beach at 277 Pomeroy Avenue.



BOATING — Try Morro Bay State Park and several other places in Morro Bay, Avila, and Cayucos. Nacimientito Lake, Atascadero Lake and Lopez Lake are good for boating and water skiing.

FISHING — Try Santa Margarita Lake, Nacimientito Lake, Lopez Lake, Morro Bay, Avila Beach, Cayucos. Deep sea fishing with rented boats and equipment is also a specialty of Morro Bay and Avila Beach.

GOLF — According to many pro golfers, the Morro Bay 18-hole public golf course is one of the most interesting courses on the West Coast. Practice range and lessons are available. Atascadero also offers a 9-hole course with driving range and instruction. The Laguna Lake Golf Course is a par 3 and 4 layout in San Luis Obispo. There are also private clubs in San Luis Obispo and Paso Robles.

LIBRARIES — The San Luis Obispo City Library is located at 888 Morro Street and the County Library at Bishop and Sierra Way. Closed on Sundays only.

SWIMMING — Public pools are located in San Luis Obispo (Nuss Memorial Pool), in Atascadero (Community Plunge), at Hawaiian Springs on Avila Road, and near Paso Robles (Resthaven).



Who, What, When, Where, How?

ADVISOR:

Who is my advisor?

If you did not take part in early registration this past summer, you will be assigned an advisor by the department where you are majoring. You will report to your department on Thursday afternoon, Sept. 18, and your advisor will be assigned at that time. He will help you to plan your course of study and give you information on how to register. If you took part in early registration, see your department head concerning assignment to an advisor. You may do this any time after registration, preferably about 10 days after classes begin.

BOOKS AND SUPPLIES:

Where do I buy my books?

The El Corral Bookstore, located in the library, carries a full line of all required textbooks and supplies. It is open from 7:45 a.m. to 7:30 p.m. Monday through Thursday; Friday 7:45 a.m. to 4:30 p.m. and Saturday 8:00 a.m. to 12:00 noon. The bookstore also operates a typewriter rental service.

CASHING A CHECK:

Where do I cash a check on campus?

You can cash checks up to \$20 at the El Corral Cashier's Office, or at the College Cashier's Office in the Administration Building. Both offices are open from 9:00 a.m. to 12 noon and 1:00 p.m. to 4:45 p.m. daily except Saturday. However, you are encouraged to deal with local banks as often as possible as the campus is sometimes unable to handle the heavy volume of campus business. You will need to present your student body card or other identification.

DROPPING COURSES:

If I decide to drop a course with or without my instructor's permission, do I just stay away from the course?

No! You must change your program officially on forms provided by the Records Office. If you don't, you may receive an F for improper withdrawal.

FEES:

Where do I pay fees?

Registration fees are paid at the end of the registration line.

LOST AND FOUND:

What do I do if I have lost or found an article?

The College Maintenance Department operates a Lost and Found service. "Found" articles may be turned in at any time between 8:00 a.m. and 5:00 p.m. "Lost" articles may be claimed between 11:00 a.m. and 12 noon and 3:00 p.m. and 5:00 p.m. The Maintenance Department is located to the north of East Mount Bishop Road near the Fire Station. Students who lose housing keys go to the Cashier's Office in the Administration Building, pay a \$3 service charge and then present the receipt at the Housing Office to receive a replacement.

MAIL:

How should my mail be addressed?

If you reside on campus in a residence hall, all mail addressed to you should state your full name, room number, name of your residence hall, California State Polytechnic College, San Luis Obispo, California 93401. If you reside off campus, all mail addressed to you should contain your full name, street address, San Luis Obispo, California 93401.

Where do I get my mail?

If you live on campus in one of the South Mountain residence halls or Yosemite Hall, you will receive your mail there. If you reside in a North Mountain residence hall, your mail may be picked up at Room 13 of Lasson Hall. All other postal services will be available at the El Corral College Book store between 9 a.m. and 4 p.m. Monday through Friday.

MILITARY:

Does Cal Poly have an ROTC?

California State Polytechnic College maintains an elective general military science unit, senior division, of the Army Reserve Officers' Training Corps (ROTC).

It exists to develop officers for the United States Army in sufficient quantity to provide a corps of well educated, well-rounded leaders.

The four-year program is divided into the basic course and the advanced course, each course covering a two-year period. The military instruction is combined with the regular academic curriculum.

Successful completion of the course entitles the student to a commission of second lieutenant, United States Army Reserve. In addition, the program provides for selection of distinguished military graduates of College ROTC units for direct appointment as second lieutenants in the Regular Army. Information in the ROTC program is available at registration.

PARKING:

Where can I park my car?

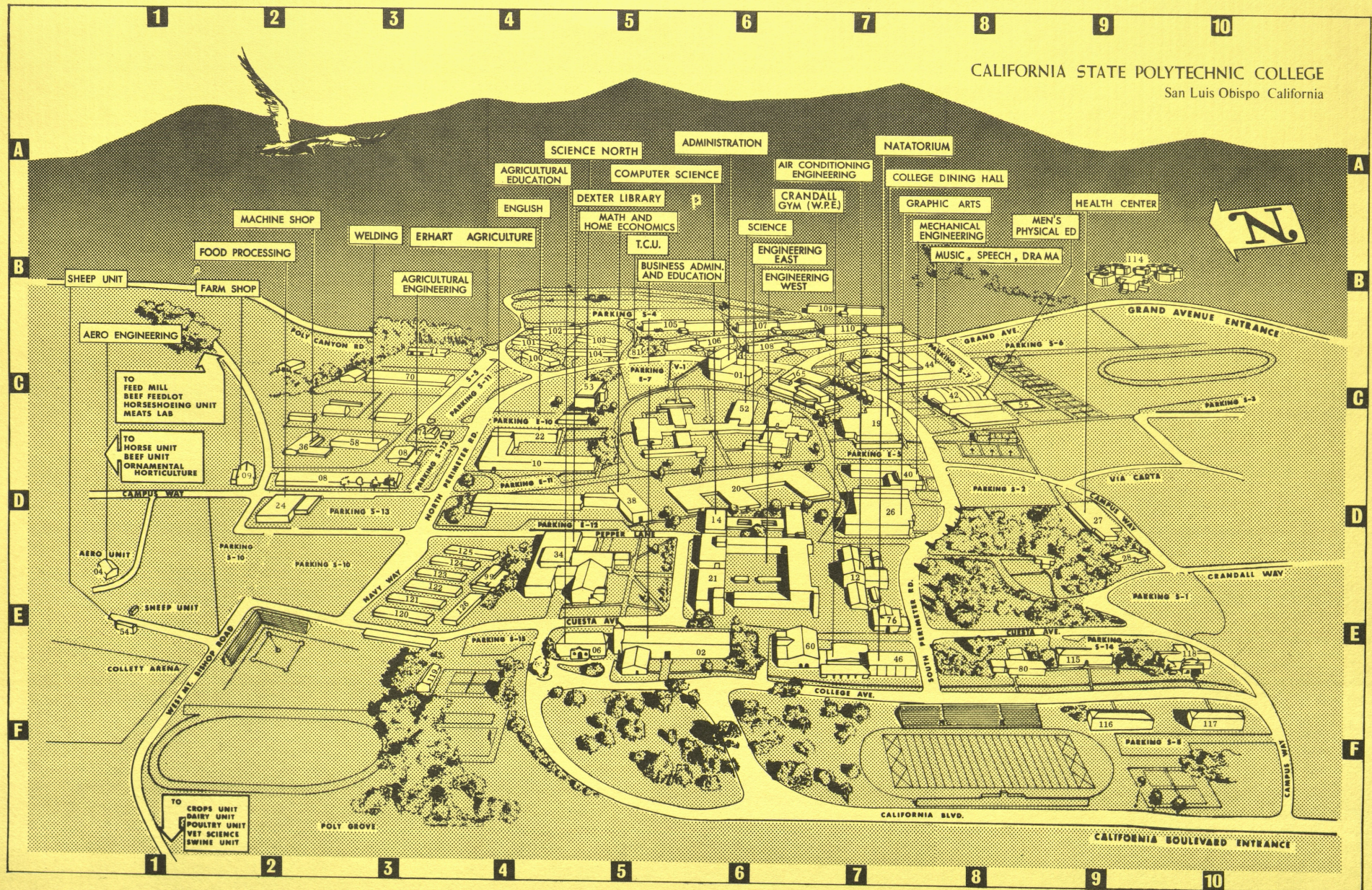
Students are required to pay \$9 per quarter for a campus parking permit. This permit entitles students to park in any parking space not specifically designated for staff or visitors. An excessive number of parking tickets (five of six) may result in the loss of your campus parking privilege.

REGISTRATION AND SCHEDULING:

How do I register for classes?

You begin registration by buying a booklet entitled "Class Schedule and Instructions For Registration" at the College bookstore. Study the requirements for your major in the College catalog, and then follow the detailed instructions in the registration booklet. Your advisor will help you plan your schedule.

CALIFORNIA STATE POLYTECHNIC COLLEGE
San Luis Obispo California



INDEX TO BUILDINGS AND FACILITIES

01 Administration Bldg	6-C	19 College Dining Hall	7-C	36 Machine Shop	2-C	53 Science North Bldg	5-C
02 Bus Admin & Educ Bldg	5-E	20 Engineering East Bldg	6-D	38 Math & Home Ec Bldg	5-D	54 Sheep Unit	1-E
04 Aero Engr Unit-Airport	1-E	21 Engineering West Bldg	6-D	39 Meats Laboratory	1-C	55 Swimming Pool Complex	8-C
06 Agriculture Educ Bldg	5-E	22 English Bldg	4-C	40 Mechanical Engr Bldg	7-C	56 Swine Unit	1-F
08 Agriculture Engr Bldg	3-D	24 Food Processing Bldg	2-D	42 Men's Physical Ed Bldg	8-C	58 Welding Shop	3-C
10 Erhart Ag Bldg	2-D	26 Graphic Arts Bldg	7-D	44 Music, Speech & Drama	7-B	60 Crandall Gymnasium	6-E
12 Air Conditioning Bldg	4-D	27 Health Center	9-D	46 Natatorium	7-E	76 Temp Arch Lab	7-E
14 Computer Science Bldg	6-D	28 Home Management House	9-D	48 Ornamental Horticulture	1-D	99 Temp Arch Lab	4-D
16 Beef Pavilion & Unit	1-D	30 Horseshoeing Unit	1-C	50 Poultry Unit	1-F	125 Sierra Hall	4-D
17 Crops Unit	1-F	32 Horse Unit	1-D	52 Science Bldg	6-C	126 El Dorado Hall	4-E
18 Dairy Unit	1-F	34 Dexter Library	5-D				

ALL HAIL, GREEN AND GOLD

*All Hail, Green and Gold,
May your praises e'er be told
Of friendship and of courage
And stalwart sons of old!*
*All Hail, Green and Gold,
In your name we shall prevail,
So to CALIFORNIA POLYTECHNIC,
HAIL! HAIL! HAIL!*

CALIFORNIA STATE POLYTECHNIC COLLEGE
ALMA MATER

