

# Men to Meet The Nation's Needs



## AFL- CIO

### Labor Endorsements

**General Election**

**Tuesday, Nov. 5, 1968\***

**\*Get You to the Polls on Time**

**California Labor Council on Political Education**

**Thos. L. Pitts, Secretary-Treasurer**

**Albin J. Gruhn, President**

**995 Market Street, San Francisco 94103**

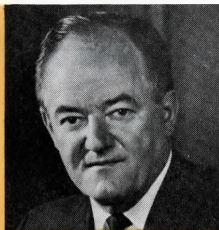


## For PRESIDENT

**HUBERT H. HUMPHREY**, a man of courage and compassion, has voted consistently for improvements in the quality and character of our social and economic life: for Medicare; better minimum pay standards; improved social security benefits for all—100% Right on 60 key roll call votes.

In sharp contrast, his Republican opponent's cumulative voting record was 87 percent against the best interests of working people.

For peace abroad and progress at home, the nation urgently needs the boundless energy, experience, wisdom and strong leadership that Hubert Humphrey can bring to the Presidency.



## For VICE PRESIDENT

**EDMUND S. MUSKIE**, the two-term governor of Maine chosen by Humphrey as his running mate, has been an effective liberal force in the U.S. Senate since 1958 and is next in line as Senate Democratic leader.

Muskie told the Democratic platform hearings in August that the nation must "chart a new direction for our foreign policy" and has urged a negotiated settlement in Vietnam. In the Senate he has voted for Medicare; for improved wages for farm workers; for low-cost public power; and fairer taxes. Senator Muskie has voted for the best interests of the nation's wage and salary earners 95 percent of the time. His GOP opponent is totally inexperienced in Congressional matters.

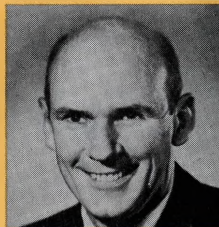
Clearly Edmund S. Muskie is the thinking voter's choice for the job that's a heartbeat away from the Presidency.

## For U.S. SENATOR

**ALAN CRANSTON**, California's State Controller for eight years helped keep taxes down by vastly increasing state revenues from tide-lands oil and state investments and cutting interest costs.

Unlike his opponent who is backed by some of the same reactionary special interest forces that tried to impose compulsory open shop legislation on California workers in 1958, Cranston is a champion of workers' rights and a veteran who is opposed to turning the war in Vietnam "over to the militarists to escalate it as they see fit."

To win peace with reason instead of recklessness, to root out the causes of urban unrest with constructive programs, California needs Alan Cranston in the U.S. Senate.



# In Los Angeles County

## For CONGRESS

### District

- 13. Stanley K. Sheinbaum (D)
- 17. Glenn M. Anderson (D)
- 19. Chet Holifield (D)
- 20. Don White (D)
- 21. Augustus F. (Gus) Hawkins (D)
- 22. James C. Corman (D)
- 23. Jim Sperrazzo (D)
- 24. Fred Warner Neal (D)
- 25. Keith F. Shirey (D)
- 26. Thomas M. Rees (D)
- 27. John T. Butchko (D)
- 28. Open
- 29. George E. Brown, Jr. (D)
- 30. Edward R. Roybal (D)
- 31. Charles H. Wilson (D)
- 32. Arthur J. Gottlieb (D)
- 34. Richard T. Hanna (D)
- 35. Thomas B. Lenhart (D)

## For STATE SENATE

### District

- 19. Louise C. Gelber (D)
- 21. Tom Blodgett (D)
- 23. Open
- 25. Open
- 27. George E. Danielson (D)
- 29. Mervyn M. Dymally (D)
- 31. James Q. Wedworth (D)
- 33. Joseph M. Kennick (D)
- 35. Open

## For STATE ASSEMBLY

### District

- 38. Carley V. Porter (D)
- 39. James A. Hayes (R)
- 40. Alex P. Garcia (D)
- 41. David Negri (D)
- 42. No Endorsement
- 43. Open
- 44. No Endorsement
- 45. Walter Karabian (D)
- 46. Open
- 47. Luther Renfroe (D)
- 48. David A. Roberti (D)
- 49. Open
- 50. Philip L. Soto (D)
- 51. Jack R. Fenton (D)
- 52. Harold K. Prukop (D)
- 53. Bill Greene (D)
- 54. Open
- 55. Leon Ralph (D)
- 56. Charles Warren (D)
- 57. Open
- 58. Harvey Johnson (D)
- 59. Alan Sieroty (D)
- 60. Open
- 61. Henry A. Waxman (D)
- 62. Mary L. Dermody (D)
- 63. Yvonne W. Brathwaite (D)
- 64. Guy H. Raner, Jr. (D)
- 65. No Endorsement
- 66. Joe A. Gonsalves (D)
- 67. L. E. (Larry) Townsend (D)
- 68. Vincent Thomas (D)

**If you don't know your district, call the Registrar of Voters at 628-9211. If No Answer, Call 629-2451.**



# On the Ballot Propositions, Labor Recommends:

**Prop. 1A—Tax Relief**—Provides \$261 million in property tax relief, most of which is earmarked for homeowners and renters. Prop. 1A must receive more votes than Prop. 9 to become effective since the two propositions are in conflict and the one receiving the largest vote is applicable. **Vote YES**

**Prop. 1—Constitutional Revision**—To complete the second of three phases of the work of the California Constitutional Revision Commission to modernize provisions of the state's constitution. **No recommendation**

**Prop. 2—Public Entity Tax Equity**—To insure that public land owned by one municipality but located in another will not be taxed at exorbitant or unfair rates. **Vote YES**

**Prop. 3—School Bonds**—Provides a \$250 million bond issue with \$200 million to be used for higher educational facilities and \$50 million for renewal and rehabilitation of urban schools. **Vote YES**

**Prop. 4—Personal Income Taxes**—To authorize the legislature to permit the reporting and collecting of California personal income taxes by reference to laws of the United States. Allows the legislature to bring state income tax return forms into closer conformity with U.S. forms. **Vote YES**

**Prop. 5—Hospital Loans**—To authorize the legislature to insure or guarantee loans for construction, improvement, or repair or for purchase of original equipment of specified hospitals and other facilities. It would spur the construction of new and needed hospital facilities in the state. **Vote YES**

**Prop. 6—Insurance Companies: Gross Premium Tax**—To permit the legislature to exclude from base of gross premium tax, premiums paid on special contracts providing retirement benefits. It would provide for an exemption from the state's gross premium tax and mean the burden would have to be borne by other taxpayers. **Vote NO**

**Prop. 7—State Funds**—To let the legislature provide that money allocated from state's general fund to any county, city and county, or city may be used for local purposes. **Vote YES**

**Prop. 8—Apportionment of Local Sales and Use Tax**—To permit the legislature to authorize counties, cities and counties, and cities to contract to apportion between themselves revenues derived from the sales or use tax. **No recommendation**

**Prop. 9—Property Tax Issue**—Provides a formula limiting total ad valorem tax burden on all property after July 1, 1969. Although the California Labor Federation has repeatedly urged tax reforms to afford property tax relief, it strongly opposes Proposition 9 because it would result in large windfall gains for large property owners and corporations and the relief afforded to middle and low income property owners would be more than offset by the necessity of increasing taxes in other areas. Moreover its bonding limitation would wipe out thousands of jobs in construction and related industries and the measure would afford no relief to people who rent. **Vote NO**

## Los Angeles County COPE recommends . . .

### FOR SUPERIOR COURT JUDGE:

Office No. 5 . . . . . Joan Dempsey Klein  
Office No. 21 . . . . . Harold J. Ackerman

### FOR JUDGE, MUNICIPAL COURT:

Office No. 3 . . . . . Noel Cannon\*

### SPECIAL DISTRICT ELECTION

Prop. A — YES

Los Angeles County Propositions:

B — YES C — YES

Los Angeles Cities' Propositions:

D — YES H — YES M — YES

E — YES J — YES N — YES

F — YES K — YES O — NO

G — YES L — YES P — YES

R — YES

Los Angeles Area School Propositions:

S — YES V — NO

T — YES W — YES

U — YES

\*Denotes Incumbent