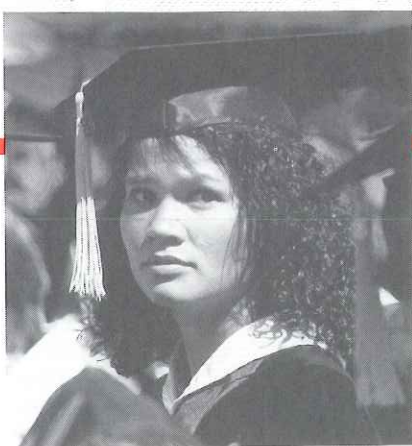


# S

## COURSES AND PROGRAMS

- 116 Course Prefixes, Symbols and Terms
- 118 Aerospace Studies
- 120 Agriculture —  
Agricultural Economics
- 128 Agriculture — Animal Sciences and Agricultural Education
- 136 Agriculture — Enology, Food Science and Nutrition
- 144 Agriculture — Family Studies and Home Economics
- 150 Agriculture — Industrial Technology
- 160 Agriculture — Plant Science and Mechanized Agriculture
- 171 Anthropology
- 175 Armenian Studies
- 176 Art
- 181 Asian-American Studies
- 182 Athletics
- 183 Biology
- 196 Business — Accountancy
- 198 Business — Finance and Business Law
- 202 Business — Information Systems and Decision Sciences
- 206 Business — Management
- 210 Business — Marketing and Logistics
- 212 Business — Graduate Program
- 216 Chemistry
- 224 Chicano and Latin American Studies
- 227 Classical Studies
- 228 Communicative Disorders
- 235 Computer Science
- 238 Criminology
- 243 Economics
- 247 Education — Advanced Studies
- 255 Education — Interdepartmental Programs and Courses
- 257 Education — Teacher Education
- 269 Education — Graduate Program
- 272 Engineering — Civil and Surveying Engineering



# N

- 282 Engineering — Edwards Air Force Base Program
- 286 Engineering — Electrical and Computer Engineering
- 292 Engineering — Mechanical and Industrial Engineering
- 298 English
- 304 Ethnic Studies
- 308 Foreign Languages
- 317 Geography
- 322 Geology
- 326 Gerontology
- 328 Health and Social Work — Interdisciplinary Courses
- 329 Health Science
- 335 History
- 341 Humanities — Interdisciplinary Minor
- 342 Journalism
- 347 Liberal Studies
- 350 Linguistics
- 354 Mathematics
- 359 Military Science
- 361 Music
- 368 Natural Science — Interdisciplinary Courses
- 369 Nursing
- 377 Peace and Conflict Studies
- 378 Philosophy
- 381 Physical Education and Human Performance
- 388 Physical Therapy
- 391 Physics and Physical Science
- 396 Political Science
- 398 International Relations — Graduate Program
- 399 Public Administration — Graduate Program
- 400 City and Regional Planning — Graduate Program
- 406 Psychology
- 412 Recreation Administration
- 415 Rehabilitation Counseling

# O

- 417 Social Science Major
- 419 Social Work Education
- 423 Sociology
- 426 Speech Communication
- 431 Telecommunications
- 435 Theatre Arts — Drama and Dance
- 440 Women's Studies
  
- 443 Special Programs**
- 453 Division of Graduate Studies and Research**
- 463 University Administration and Policies**
- 471 Faculty and Administration Index**
- 505 Subject Index**
- 512 Campus Directory**
- Inside Back Cover — CAMPUS MAP**

This catalog is prepared under the supervision of the Assistant Vice President for Academic Affairs, J. Leonard Salazar.

**Editor** Candy Merchant Priano

**Graphics** Priscilla D. Helling, Instructional Media Center

**Assistant to the Editor** Rick Bonus

**Photography** Eusevio Arias, Principal Photographer  
Carolyn I. Skei, Public Information  
Randy Dotta-Dovidio, Instructional Media Center

**Production Assistants, Editorial**  
Denise Biggert, Laurie C. White, Yvonne Yoshikawa

**Graphic Assistants** Eric Becker, Stephenie Barker

**Planning and Printing Operations**  
Fred C. Relyea, Office of State Printing, Sacramento

**Vol. LXXVIII No. 3 May 1990**  
One of a series of administrative catalogs published four times a year in January, March, May and September by California State University, Fresno: 5241 N. Maple Ave., Fresno, California 93740. Second class postage paid at Fresno, California (USPS 210240).

**Postmaster:** Send address changes to Office of Admissions, California State University, Fresno: 5241 N. Maple Ave., Fresno, CA 93740-0057.