

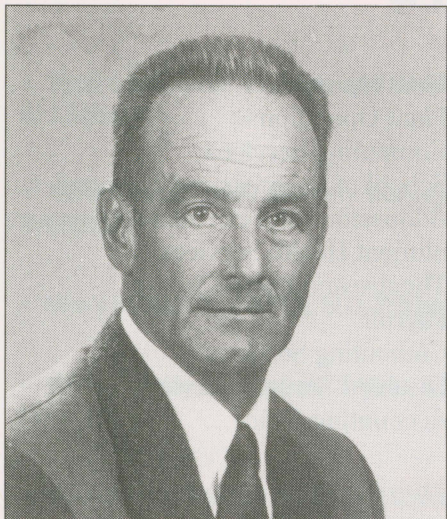
The View

December 7, 1992 Vol. 3, No. 6
Faculty & Staff Newsletter
From

**California
State
University
Hayward**

Save this date:

**December 17: Staff Holiday Reception.
3-5 p.m. UU Main Floor.**



Doug Weiss

Former Yankee, long-time Pioneer, named interim athletic director

Doug Weiss, who is entering his twenty-first year as head baseball coach of the Pioneers, will serve as interim athletic director. He replaces Al Mathews, who retired this fall.

Weiss played baseball for the University of California while earning a degree in physical education. He played professionally as part of the Yankee organization from 1958 to 1961. A pitcher, he played with several teams including AAA ball in Richmond, Virginia. Following his active playing career, he returned to Berkeley to complete his master's degree.

Prior to joining Cal State Hayward's staff, he coached at San Jose City College, served as assistant to the athletic director at UC Berkeley, and was head baseball coach at St. Mary's. At CSUH, his teams won Far Western Conference Championships in 1974 and 1977 and reached the NCAA II West Regional Championship in 1977, losing to the eventual national champion UC Riverside.

According to Weiss, "My main goal will be to maintain a solid athletic program while doubling as a coach and athletic director. Al did a great job the past twenty-two years. He will remain as an important consultant to me for the remainder of the year."

Loan program a golden opportunity for future CSU faculty

The Forgivable Loan/Doctoral Incentive Program offers financial support and faculty assistance to students pursuing doctoral degrees and who are interested in a teaching career. The program is designed to increase the number of CSU faculty members who are minorities, women, and persons with disabilities in fields where they are underrepresented.

Support includes a) faculty sponsorship, b) financial support in the form loans of up to \$10,000 per year for up to three consecutive years, and c) a loan forgiveness provision under which twenty percent of the loan is forgiven for each year of full-time postdoctoral teaching in the CSU.

The program is open to new and continuing full-time students enrolled in doctoral programs during the 1993/94 academic year. Applicants are not required to be accepted into a doctoral program at the time of applying.

Play about M. L. King, Jr. and Malcolm X will be presented

Free admission for CSUH students

Reserve space now for *The Meeting*, a play based on the fictional confrontation between Martin Luther King, Jr. and Malcolm X. It will take place February 24 at noon in University Theatre. CSUH students will be admitted free. Tickets for other groups are \$2/non-CSUH students with IDs, \$5/general public.

The seventy-minute play by Jeff Stetson is set in a shabby Harlem hotel room in February, 1965. A clandestine meeting is taking place between the charismatic leaders of the Black Freedom movement Dr. Martin Luther King, Jr., a Baptist minister and champion of non-violent protest, and Malcolm X, Black Muslim and advocate of self-defense by any means.

Associated Students encourages faculty members to bring classes to the production. For information call the Associated Students at 881-3908.

Positions available in Japan

Applications for the 1993 JET (Japan Exchange and Teaching) Program are available in the Career Development Center (CDC), Warren Hall 509.

The application deadline is December 15, 1992. Placements begin in late July and extend for one year.

JET seeks to help enhance internationalization in Japan. The positions available are for coordinator for international relations with placement in the offices of local governments in Japan, and assistant English teacher, with placement in the public system of secondary education.

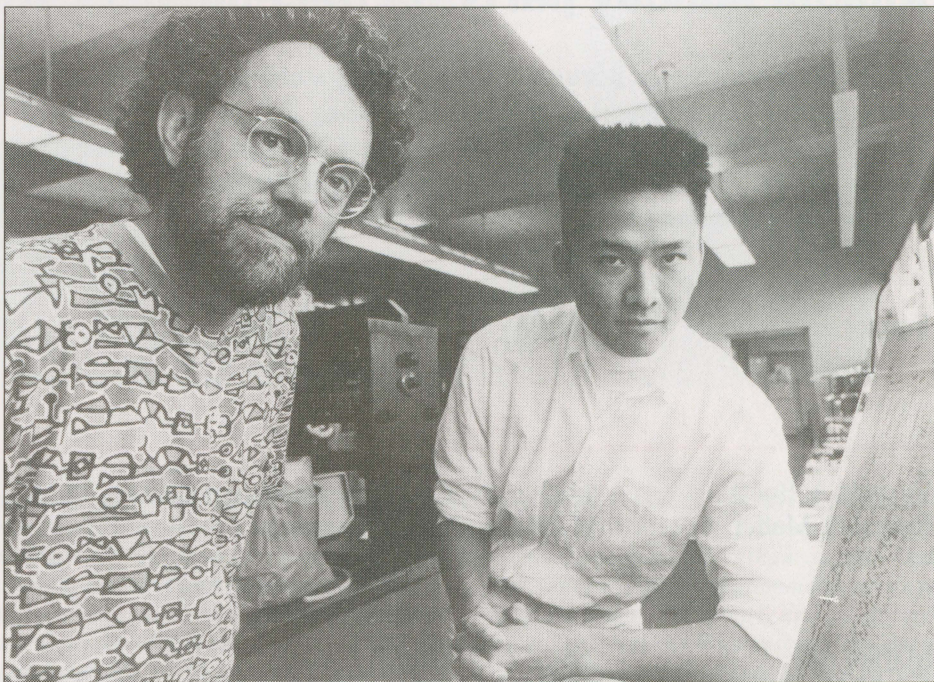
To be eligible for the program, individuals must be United States citizens with at least a bachelor degree by July 1993. Students and alumni, as well as other members of the campus community are eligible.

For more information and a video, *A Window to Japan*, contact Nancy Olsson in the CDC, ext. 3622.

Applications are available in the Office of Research and Faculty Affairs, WA977. Contact Esther Briano at ext. 4212. Completed applications are due on or before February 15, 1993.



CLOSES TODAY—Works by John Balloue are part of the holiday sale of Native American arts and crafts, which closes December 7. The hours are 10 a.m.-4 p.m., Smith Museum, 4th floor, Meiklejohn Hall.



SEQUENCE OF EVENTS—The research Henry Thai, right, did in the sequencing lab of Christoph Baysdorfer of the biological sciences department prepared him to win a two-year scholarship from the Barry M. Goldwater Scholarship and Excellence in Education Foundation.

Student interested in biomedical research helped by Goldwater scholarship; nominations for upcoming awards due February 5

After a class in molecular and cellular biology with Christoph Baysdorfer, freshman Henry Thai approached his teacher about the possibility of assisting him in his laboratory research. That decision in 1990 helped pave the way for Thai's selection in 1991 for an award from the Barry M. Goldwater

in the gene that encodes the blueprint for a protein critical to moving salts in and out of cell membranes. A lab partner suffers from the disease and the two are analyzing DNA from her hair samples to see which of approximately 230 mutations of the gene sequencing is the cause.

Just as Thai took advantage of the opportunity to gain research experience early in his college career, he has also gained experience in other areas important to his career goals in medicine. Seeking exposure to "both sides of medicine," he currently volunteers at Washington Hospital in Fremont and previously worked in the emergency room at Kaiser Permanente in Hayward. He describes his duties in the emergency room as "trying to make the situation less traumatic than it already was," by giving patients blankets and talking to them. In 1991, he interned at Sandos Crop Protection in Palo Alto where he worked in the sequencing department. On campus, Thai has been a math proctor for several quarters.

Thai graduated from Mission San Jose in Fremont after attending Hayward's Tennyson High School. He came to the United States from Viet Nam with his family when he was seven. No longer able to speak proficiently in his native language, he has signed up to take a class in Vietnamese during winter quarter.

Nationally, three hundred Goldwater Scholarships will be awarded in 1993 to juniors and seniors. The deadline for nominations is February 5. The campus can nominate six students. Awards will be announced in May. For more information, contact Russell Merris, ext. 3244.

Glasrud honored

Bruce Glasrud, acting chair of the Department of History, has been named the CSUH Outstanding Professor. A profile of him will appear in the January 11 issue of *View*.

Seeking exposure to "both sides of medicine," [Thai] currently volunteers at Washington Hospital in Fremont and previously worked in the emergency room at Kaiser Permanente in Hayward.

Scholarship and Excellence in Education Foundation. These scholarships are designed to nurture scientists, mathematicians and engineers. According to Thai, who will complete his degree in biology in June, the Foundation is looking for students who have research backgrounds. Thai worked with Baysdorfer on sequencing of corn genes, a process which involves resolving the DNA combination of the gene. Baysdorfer, a plant molecular biologist, is working on identifying new genes and determining their functions.

Recipients of the Goldwater scholarship receive up to \$7,000 a year for up to two years. The goal, says Thai, is to allow students to spend time doing research instead of working at unrelated jobs to support their education. He has received the scholarship for both his junior and senior years. It covers tuition and/or fees and room and board.

Thai has just completed his applications to medical school and hopes to combine the practice of medicine with biomedical research. He is currently interested in the causes of cystic fibrosis, a lung disease caused by a defect

Annual holiday party on December 17 will honor employee service

Employees who have served Cal State Hayward for five years or more will be recognized at the Staff Holiday Reception on Thursday, December 17. The event will be held at the University Union on the first floor from 3 to 5 p.m. Listed below are those who will be acknowledged.

Employee	Month	Department
25 YEARS		
Virginia A. Booth	9/92	Career Development Center
Robert A. Maffei	11/92	Plant Operations
20 YEARS		
Mariko Abe	7/92	Music
Jon P. Amen	9/92	Public Safety
Ann E. Cambra	5/92	Statistics
Adam Corona, Jr.	2/92	Plant Operations
Frank E. Dishman	4/92	Plant Operations
Penny S. Lobato	5/92	Admissions and Enrollment Services
Robert G. Mahoney	11/92	Special Programs
Robert D. Martinez	2/92	Instructional Media Center (IMC)
Henry A. Mendoza	12/92	Student Academic Services
Janice H. Muzzy	5/92	Math and Computer Science
Leone R. Nidiffer	12/92	Institutional Research and Analysis
Robert S. Portillo	7/92	Office of the President
Edwin K. Reuling	8/92	Student Services
Marlene J. Rodriguez	2/92	Career Development Center
Marva J. Tate	2/92	Admissions and Enrollment Services
Paula S. Wittler	2/92	Receiving
15 YEARS		
Deborah D. Baronian	10/92	Extension Division
Timothy A. Cabral	6/92	Plant Operations
Marcel Cander	7/92	Computing Services
Toni L. Denison-Auvinen	10/92	Student Academic Services
Daniel Doiy	5/92	Instructional Media Center
Keith A. Donnelly	4/92	Plant Operations
Kristen P. Erway	10/92	Budget Office
Alberto I. Flores	12/92	Plant Operations
Ramon Flores	1/92	Plant Operations
Ilene R. James	5/92	Plant Operations
Coleen R. Kafoure	10/92	Financial Aid
William P. Kafoure	6/92	Computing Services
Ann D. Kihara	4/92	Financial Aid
Ping S. Lee	7/92	Plant Operations
Errick V. Lewis	10/92	Student Academic Services
John M. Manion	3/77	Academic Programs
Barbara C. Owen	4/92	School of ALSS
Jose L. Pena	1/92	Plant Operations
Rosemary R. Saballos	11/92	Budget Office
Eric D. Thompson	5/92	Purchasing
Linda J. Steele	4/92	Chemistry
Maria C. Vega	1/92	Plant Operations
Cheol Seung Yi	7/92	Plant Operations
10 YEARS		
Robert G. Apple	9/92	School of Science
Juanita G. Brusstar	7/92	Computing Services
Sandy L. Coulter	7/92	Political Science
JoAnne Davis	9/92	Geological Sciences
Joyce L. Gaines	10/92	Cooperative Education
Mary C. Hootman	9/92	Accounting Office
Milos Jarolimek	10/92	Computing Services
Bonnnie S. Jison	10/92	Educational Psychology
Ronald K. Kihara	7/92	Vice President Administrative & Business Affairs
Linda S. LaFleur	7/92	Library
Mario J. Lavagnino	7/92	Public Safety
Cheryl J. Lavin	8/92	School of Business and Economics

Redencion Lelchuck	4/92	Plant Operations
Fred W. Leonard	12/92	Plant Operations
Kurt C. Mayer	1/92	Computing Services
Eleanor D. Moss	10/92	School of Business and Economics
Nadine C. Moya	11/92	Admissions and Enrollment Services
Carol R. Phillips	10/92	Student Health Services
Alison L. Ragland	9/82	Theatre and Dance
Michelle R. Regier	4/92	Payroll
Elaine N. Rosendo	7/92	Computing Services
Pennijean Savage	10/92	Disabled Student Services
Alice M. VanWetter	8/92	Accounting Office

5 YEARS		
Audrey C. Azevedo	10/92	Chemistry
Diana M.Balgas	7/92	Educational Psychology
Linda M. Beebe	12/92	Accounting-Computer Information Sys.
Lynn S. Benjamin	10/92	Biological Sciences
Shirley R. Bozdeck	12/92	Plant Operations
Mary E. Brennan	9/92	Career Development Center
Georgina A. Broadbent	11/92	Admissions and Enrollment Services
Janice M. Bruett	8/92	Extension Division
Boby Ruth Charleston	8/92	Plant Operations
Robert R. Gale	6/92	Plant Operations
Steven R. Hickey	11/92	Pioneer Heights
Nancy M. Higaes-Jimenez	5/92	Admissions and Enrollment Services
JoAnne E. Hill	9/92	Personnel
Frankie A. Hockstaff	9/92	Public Safety
Romeo L. Ibarra	5/92	Computing Services
Mardell M. Keehen	3/92	Personnel
Ernesto C. LaRosa	11/92	Pioneer Heights
Laura E. Learned	9/92	Purchasing
Dorothea L. Mathues	8/92	Career Development Center
Patricia A. McCabe	10/92	Financial Aid
Kathleen A. Mayer	7/92	Plant Operations
Bonnie K. Miller	12/92	KPE
Evelyn A. Padua	11/92	Student Academic Services
Juanita R. Rodriguez	8/92	Student Services
Kathryn M. Rogers	4/92	Personnel
Blanca R. Ruiz	7/92	Physics
Linda J. Schneider	8/92	University Relations and Development
Shelley M. Simrin	4/92	Speech Pathology and Audiology
Stacy Wilson	10/92	Institutional Research and Analysis

Campus contributes to Thanksgiving for local families

The Associated Students would like to acknowledge all campus departments and organizations for their generous donations to the 1992 Holiday Basket Drive. AS provided turkeys to accompany each of the baskets prepared. Forty-two baskets were delivered to local families through St. Clements Catholic Church, the Food Bank and the Salvation Army. Participants on campus are

Academic Senate	Academic Affairs
Payroll Department	Extension Division
Circle K	Student Affirmative Action
Newman Campus Ministry	Office of Student Life
Department of Biological Sciences	Accounting Office
Financial Aid	Personnel Department
Tri-Sigma Sorority	Career Development Center
Department of Chemistry	Budget Office
Smith Center	Library Acquisitions
University Relations & Development	Pioneer Bookstore/Foundation
Office of the President	Heather Holmes
E.O.P.	Office of Research and Faculty Affairs
Department of Mass Communications	Associated Students Business Office
Carlos Bee Hall	Pioneer Heights - On Campus
Upward Bound	Residents Association
Tau Omega Sorority	Institution of Research and Business
Department of Math and Computer	Development
Science	Excel/McNair ScholarsProgram/
University Union	Disabled Student Services
Reprographics Department	
Department of Sociology	
German Club	
Instructional Media Center	

DECEMBER

- 11 Friday**
- Men's basketball. Lewis and Clark. 8:15pm.
- 12 Saturday**
- Men's basketball. Behany College. 8:15pm.
- 15 Tuesday**
- Men's basketball. Cal Poly, SLO. 7:30pm.
- 17 Thursday**
- Staff Holiday Reception. 3-5pm. UU Main Floor.
- 18 Friday**
- Basketball. Women's: U. of Alaska, Anchorage, 6pm. Men's: Westmont. 8:15pm.
- 19 Saturday**
- Basketball. Women's: Fresno Pacific, 6pm. Men's: UC Riverside. 8:15pm.
- 25 Friday**
- University holiday.
- 28 Monday - 29**
- University holiday.
- 29 Tuesday**
- Women's basketball. CSU Dominguez Hills. 7pm.

JANUARY

- 1 Friday**
- University holiday.
- 4 Monday**
- Women's basketball. Texas Women U. 7pm.

"Twofers" on sale

The Personnel Office is selling the 1992 Entertainment book for \$40. The book offers two-for-one coupons to restaurants, movies, cultural and sporting events and hotels. Part of the proceeds are returned to the CSUH. For information contact ext. 3634.

View

The View from California State University, Hayward is published every other Monday except during academic recesses. Deadline for submission of material is Monday, 5 p.m., two weeks prior to the publication date. Please address all copy to The View, 908 Warren Hall, CSUH, Hayward, CA. 94542. All copy over 50 words must be submitted on a disk or through e-mail to ~view. Copy may be edited for style, length and appropriateness. The View is a publication of the Office of University Relations & Development.

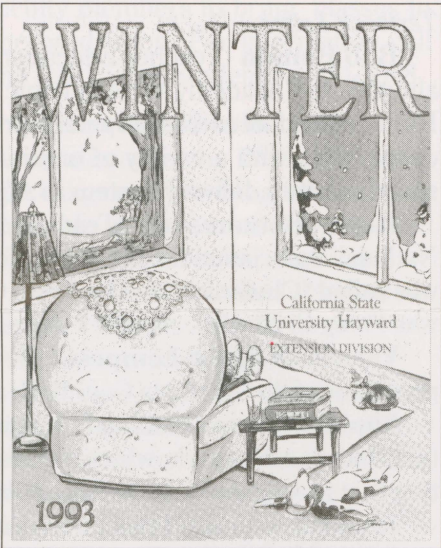
Managing Editor: Linda Schneider
Photography: Chris Chenard, Terry Smith

- Publication Dates—Deadlines**
- January 11—December 28
January 25—January 11
February 8—January 25
February 22—February 8
March 8—February 22
March 29—March 15
April 12—March 29
April 26—April 12
May 10—April 26
May 24—May 10
June 7—May 24
June 28-June 14

Printed on recycled paper



MPA ALUMNI—The Department of Public Administration, celebrating its 25th anniversary, held a reception to honor University employees who have graduated from the department. Pictured above, front row from left, Janet Lopus (Academic Resources), Madeline Scott (Property/Contracts), Nancy Sadoyama (Liberal/General Studies), Jane Morrissey (Facilities Planning and Operations), Janet Giovannini-Hill (Financial Aid), Olga Stanton (Admissions and Enrollment Services), Dorothy Boston (Plant Operations), back row from left, Stacy Wilson (Institutional Research and Analysis), Harold Campbell (Student Academic Services), Randy Gale (Plant Operations), Margaret Emory Lenfestey (Disabled Student Services), Laurence Brown (Psychology), Armando Gonzales (Academic Resources), Hal Gin (Student Life), Nanette Franceschini (Biological Sciences), May Chow (University Relations and Development), Joseph Andrews (Business Affairs), Michael Shumate (Recreation). Not pictured are Lee Bateman (Business Affairs), Steven Brown (Student Affirmative Action), Shelly Caldwell (Economics), Frank Dishman (Plant Operations), Harold Hoskins (Housing, retired), Mack Lovett (Instructional Services), Mark Nickerson (Contra Costa Center), Marilyn Oberg (Library), David Sanchas (Public Safety).



Extension catalog available
The catalog of winter quarter classes offered by the Extension Division can be obtained by calling 881-3605.

Extension offers thirteen certificate programs in education and professional development. Certificates in Technology Transfer and Commercialization, and Telecommunications have been added to Facilities Maintenance and Management, Gifted and Talented Education-GATE, Purchasing and Materials Management, Human Resources Management, Chemical Dependency Studies, Microcomputers in Education, Construction Management, Nonprofit Management, Fitness Instruction, Mortgage Banking and Paralegal Studies.

In addition, Extension offers a variety of courses ranging from "Word Weaving: Introduction to Storytelling Techniques" to "Making it as a Sports Official." Two travel/study courses are being offered through Extension. June 21 through July 11, individuals can study in Stresa, Italy. For the month of July, Yolanda Patterson of the Department of Foreign Languages and Literatures will conduct a study tour in Paris.

According to Herb Graw, associate vice president for Extension, "For an adult population, our programs offer opportunities for job upgrading or career change. Most adult education is very pragmatic."

Chairs and acting chairs list complete for 1992/93

The following faculty have been named to serve as department chairs and acting chairs for 1992/93.

ALSS:

- Anthropology
- Art
- Communicative Sciences & Disorders
- Criminal Just. Administration
- English
- Ethnic Studies
- Foreign Languages and Literatures
- Geography & Environmental Studies
- History
- Human Development
- Liberal Studies Program
- Mass Communication
- Music
- Philosophy
- Political Science
- Public Administration
- Sociology & Social Services
- Speech Communication
- Theatre and Dance
- Women's Studies Program

- Mary Cullinan, Interim Dean
- Mary Trapp, Associate Dean
- Alan Almquist
- Gregory MacGregor
- Robert Veder
- Ben Carmichael
- E. James Murphy, Acting
- Michael Clark
- Don Warrin
- Herb Eder
- Bruce Glasrud, Acting
- Ann Meyer
- Jim Nichols, Director
- Robert Terrell
- William Wohlmacher
- Marek Bielecki, Acting
- Emily Stoper
- Richard Vrmeer
- Asoke Basu
- Jack Samosky
- Thomas Hird
- Patricia Guthrie, Director

BUSINESS & ECONOMICS:

- Accounting & CIS
- Economics
- Management & Finance
- Marketing

- Jay Tontz, Dean
- Hadi Behzad, Associate Dean
- Vernon Kam
- Nan Maxwell
- Don Wort
- Eric Soares

EDUCATION:

- Educational Leadership
- Educational Psychology
- Kinesiology & Physical Education
- Recreation & Community Education
- Teacher Education

- Arthurlene Towner, Dean
- Ana Maria Rodriguez, Associate Dean
- Linda Lambert
- Leslie Mitchell
- Stan Clark
- Susan Sunderland
- Jodi Servatius

SCIENCE:

- Biological Sciences
- Chemistry
- Geological Sciences
- Health Sciences
- Mathematics & Computer Science
- Nursing
- Physics
- Psychology
- Statistics

- Ken Rebman, Dean
- Nancy Harrison, Associate Dean
- Richard Tullis
- Leroy Chauffe
- Sue Hirschfeld
- John Wong
- Edward Keller
- Arlene Kahn
- Charlie Harper
- Allan Netick
- Michael Orkin

Items in this section are printed in the order in which they are received in the Office of University Relations and Development. We receive numerous submissions each week and print them as space allows.

Benjamin Bowser has also published "Community Based AIDS Prevention Programs for Adolescents" in Ralph DiClemente (ed.) *Adolescents and AIDS: a Generation in Jeopardy* (Sage 1992) and presented two papers last spring at the National Institute on Drug Abuse AIDS Prevention Research Conference in Bethesda, Maryland and at a MacArthur Foundation forum on Sexuality Across the Life Course in New York City. He presented a paper in June at the National Institute on Drug Abuse symposium in Atlanta on Black Males at Risk for AIDS. He has also published "African - American Culture and AIDS Prevention: From Barrier to Ally" in *The Western Journal of Medicine*, Vol. 157, No. 3, September, 1992 pp. 286-289.

Marcelline Krafchick (English) presented her paper, "Bigfoot Bertha: Poem as Folktale as Myth," at the ninetieth annual meeting of the Philological Association of the Pacific Coast, at UC San Diego on November 15.

James E. Guffey (Criminal Justice) presented a paper titled "Cognitive Dissonance and the Exclusionary Rule: Police Officers in a Quandary" to the annual meeting of the Western and Pacific Association of Criminal Justice Educators (WPACJE) on October 30-November 1 in Irvine. **Benjamin G. Carmichael** (Criminal Justice) presented a paper titled "Teaching Research Methods to Criminal Justice Majors." Marc G. Neithercutt and Patricia L. Zajac (Criminal Justice) presented a paper titled "A Serial Murderess' Journey to Death Row."

Jay L. Tontz (SBE) spoke on November 16 to the Hayward Rotary Club on "A Report on Russia: and on November 17 to the Northern California Sanitary Association on "An Economic Forecast for 1993".

Carl J. Bellone (Public Administration) spoke to the Leadership Livermore Program of the Livermore Chamber of Commerce on November 5 on the topic of "Valuing a Diverse Workforce."

Michael Clark, Barbara Pointer Ellis, Colleen Fong, Richard Garcia, Roxanne Dunbar Ortiz and Noel Samaroo (Ethnic Studies) comprised the panel "Teaching Ethnic Introductory Courses" at the Fifth Annual National Conference on Racial and Ethnic Relations in American Higher Education in San Francisco, June 6.

Colleen Fong (Ethnic Studies) has had a review of *Intercultural Marriage: Promises and Pitfalls* by Dugan Romano accepted for publication in the *Journal of Comparative Family Studies*, vol. XXV.

Bruce A. Glasrud (History) was an invited participant at the recently concluded conference in Los Angeles on "The Art of Teaching History-Social Science: Linking Schools, Colleges, and the Universities" which was sponsored by the California History-Social Science Project.

Steve Williams and Jacki Anderson (Educational Psychology/Special Education) were invited participants in the California Statewide Comprehensive System of Personnel Development (CSPD). Institute on Strategic Planning held in Sacramento October 24-27. They are also serving as the IHE representatives

for the Region L (Alameda, Contra Costa, San Francisco, Santa Clara counties) Coordinating Council for (CSPD).

Zinovy D. Radovitsky (Management and Finance) presented a paper entitled "Synchronous Manufacturing as an Effective Technique to Improve Operations" at the 34th Joint National Meeting of the Operations Research Society of America and The Institute of Management Science in San Francisco on November 4. He also was a chair of the Network Analysis I session at the same conference on November 2.

Pauline J. Kelzer (Health Sciences Department) attended the annual meetings of the American Public Health Association held in Washington, D.C. She presided and moderated at three panel discussions and presented two papers: "Emerging Success Patterns Using Coalitions to Develop Health Legislation," and "AIDS Prevention in the Peoples Republic of China: Developing a National Health Policy."

Steve Ugbah (Marketing) and **Jay Umeh** (Public Administration) presented a paper at the annual conference of the Decision Sciences Institute, San Francisco, November 22-24 on "Information Resource Management: An Examination of Individual and Organizational Attributes in State Government Agencies."

Esther Railton Rice (Teacher Education) participated in the National Commission for Environmental Education's review of current research and the development of their research agenda for the next year.

David Stronck (Teacher Education) presented his paper "Teaching About AIDS" at the annual convention of the National Association of Biology Teachers in Denver, November 12. He is also serving as the contributing editor of the *Textbook Letter*.

Bob Bonnin (Teacher Education) has accepted an appointment as consultant with the Academy for Academic Development, Washington, D.C., in their Human Resources Development project, USAID. The project will work in cooperation with a variety of organizations in restructuring the economy and social services delivery system in Afghanistan.

Helen Botnarescue (Teacher Education) presented a workshop at the National Association for the Education of Young Children on November 12. It was called "Chalkniques: The Art of Children's Chalk Talks." Her co-presenter was Patsy C. Rhoads, master's degree graduate from her program.

Valerie Helgren-Lempesis (Teacher Education) is serving this year as president of the Alameda County Reading Association.

Louise Waters (Teacher Education) coordinates the Oakland Developmental Education Network, which assists schools to explore child-centered education that is responsive to student culture, language, and development.

Joan Davenport (Teacher Education) recently chaired the conference The Arts: Essentials in the Classroom. She also was appointed chair of the Walnut Creek Arts Commission.

Lynn Pi (Management and Finance) presented a paper entitled "Corporate Control and Bank Efficiency," co-authored with Stephen Timme of Georgia State University, at a conference on Efficiency in the Financial Services Industry, September 24-25 in Atlanta. The paper was selected by outside referees and will be published in *The Journal of Banking and Finance* next spring.