

Costly 'Re-org' plan reviewed

Dr. Stanley Paulson, new vice-president in charge of academic affairs, told a gathering of SF State's faculty that the new "university-type" organization will involve tremendous expense.

Chancellor Dumke, President Dodd and the Department of Finance will have to work closely in order to im-

plement the new system, Paulson said.

In addressing the first faculty meeting of the semester, Paulson spoke in the absence of President Paul Dodd, currently making a survey of the college's school project in Liberia. He said that his information on the reorganization was "spotted," with only one week

on the job.

As it stands now, four new positions have been created and staffed: Vice-president in charge of academic affairs, Paulson; Dean of the School of Humanities and Sciences, Dr. Daniel Feder; Dean of the School of Creative Arts, Dr. J. Fenton McKenna; Dean of the School of Education, Dr.

Robert Smith.

Dr. George Feliz now holds the title of dean of the graduate division. His title and the previous four have all been approved. The following positions may not hold the title of dean, but the jobs are set;

School of Biological Science, Dr. John Hensill; School of Physical Sciences, Dr. Robert Thornton; School of Humanities, Language, and Literature, Dr. Jordan Churchill; School of Social Sciences, Dr. Eldon Modisette; School of Professional Education, Dr. Aubrey Haan; School of Health Physical Education and Recreation, Dr. Douglas Fessenden; School of Business, William Niven.

The post of School of Psy-

chology is still vacant. Dr. Feder will continue as its head until someone can be named.

Four of the above positions are budgeted for 12 months and the remaining four are on a nine month basis. Paulson indicated that all may soon revert to a 12 month pay rate.

Paulson invited the new faculty to "join in making the quality of learning as rich as we can" at SF State.

Faculty thanks Dodd

SF State's faculty threw its support behind President Paul Dodd's reorganized appointments last month, during the first faculty meeting of the semester on Monday.

This move was deemed necessary because of reports in a downtown newspaper claiming that Dodd was in trouble with Chancellor Dumke and the State College's Board of Trustees over his "unrealistic" changes and lack of faculty approval of appointments.

A resolution recommended by the Executive committee of the Academic Senate, was passed thanking Dodd for his close contact with the faculty while making the new appointments.

An amendment, adding that the faculty "deplored" the adverse publicity given to the appointments, was rejected.

The resolution:

"Resolved that the faculty of San Francisco State College duly assembled does hereby express its appreciation to President Paul Dodd for his constant consultation with representative members (Continued on Page 2)

Registration week ends with 'rally'

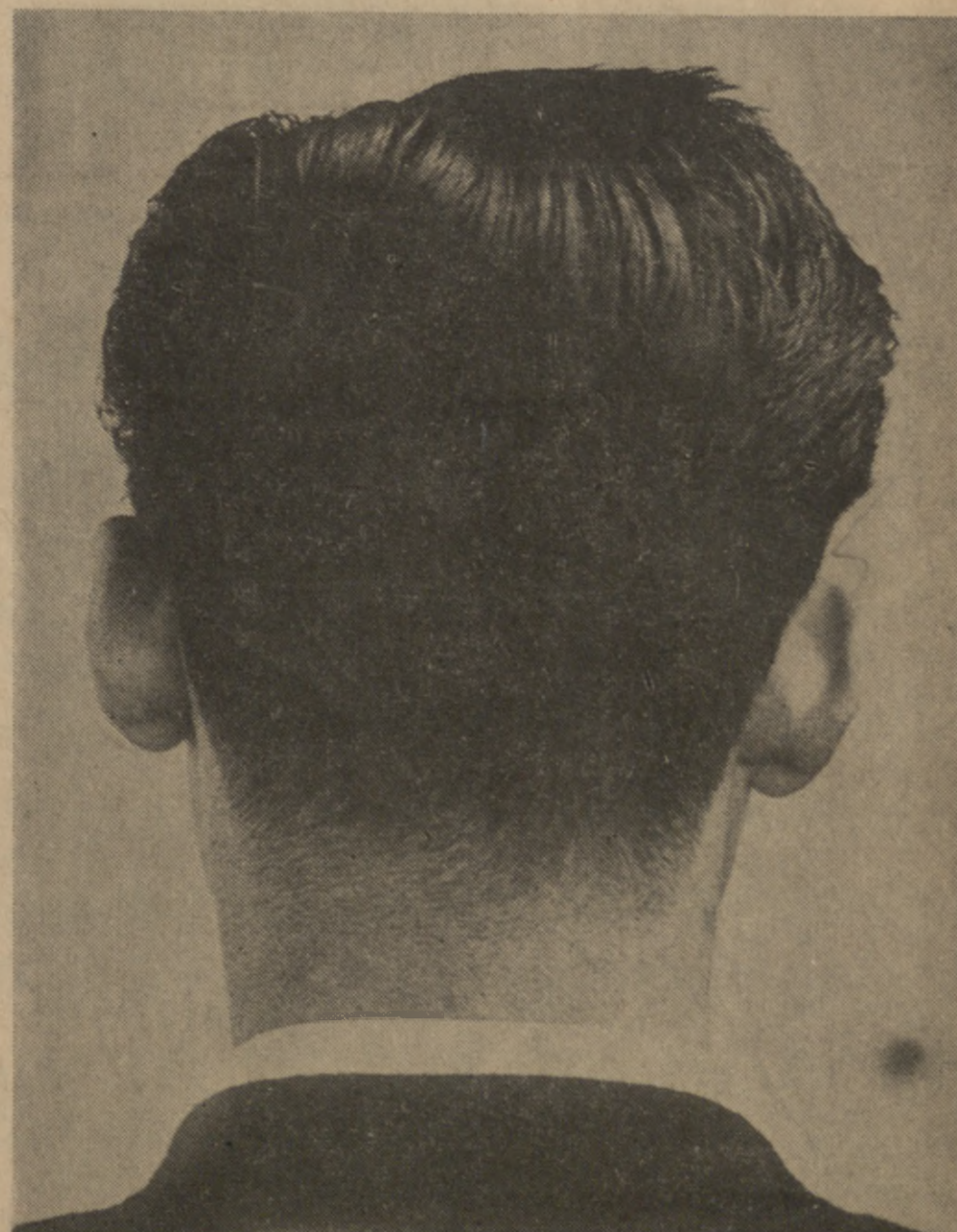
The climax of a hectic registration week will be a series of events entitled, "Rally Round the Campus," Saturday, September 14.

Between the hours of 9 p.m. and midnight, the campus will be hopping with a more relaxed type of activity than had been experienced earlier in the week.

The Jerry Olsen Band will be playing for the dance in the main Gym. In the Redwood Room, decorated for the occasion with checkered tableclothes and candlelight, Cyril Bennett will be playing a honky-tonk piano.

Folk singer Rod Albin will lead an impromptu hootenanny in the Gallery Lounge. Cool refreshments will be served in the coffee shop.

Country-minded folk may be interested in the motorized hayride around the campus. Dress is informal.



For a face to face look at this man and what he stands for, turn to opposite side of this page

9077



Vol. 86, No. 1 San Francisco State College Thursday, Sept. 12, 1963

Beauty here inviolate'

Dodd greets new students



PRES. PAUL A. DODD

This fall semester of 1963 finds San Francisco State College expecting its largest enrollment. This sizeable figure is beside the point. The significance is you.

As a comparative newcomer to this campus I can both relate and enjoy with you the experiences you are undergoing. The physical beauty contained in our Quadrangle, which must remain inviolate from the increased building, projects a particularly effective landscape. Traveling around the periphery of the college, one is unable to appreciate the graciousness of the inner sphere. When it is entered, it's a surprise to a newcomer, a re-

(Continued on Page 11)

Gater seeks ad staff

Jobs in the advertising world are open to all students on campus, Craig George, student publications advertising manager, announced today.

"The Gater needs students who want practical experience in advertising, from selling to layout," said George, who has his headquarters in Hut T-1, ext. 262.

Student workers receive a 15 per cent commission on each ad when it is paid. They will also receive 2 units of credit in journalism 102.

7000 students will register smoothly?

If all goes as expected, seven thousand continuing students will register smoothly and without incident today.

Director of Orientation and Registration, Dan Long, is looking forward to a duplication of last semester's efficient operation.

"We expect smooth registration," Long said, "and, if all goes well, registration should be ahead of schedule again this year."

During the Spring registration, the later lines were moving an hour or two ahead of schedule. This achievement

was credited to the scheduling of classes all day, five days a week. The same practice will be followed this time.

Long offered some pointers for easing the registration process:

- There is no need to queue up all night in order to enter the Gym earlier than others. The lines will move rapidly with about 75 students entering at once.
- Have a Program Planning Sheet signed by an advisor, a pen and registration fees with you.
- Have an alternate schedule ready in case any classes close.

An aid to the freshman registration process will be the shortened physical exam program. Due to a budgetary cut back, the exam is limited to a medical history form and a chest x-ray.

The number of students getting pre-reg has been reduced because of the limited physical exams, according to Long. The number of women working on the exams has been reduced from 300 to 70. There are only 35 men working as opposed to 150 last year.

cifica Tribune in Pacifica, California.

"I am giving up the editorship with many regrets," Abouzeid said. "But I can't see any other way out."

Abouzeid's unexpected move will necessitate the election of another editor by the BOP, next Thursday.

Jim Mildon, appointed managing editor by Abouzeid, will act as editor until the election.

Gater editor election due

Mahmoud Abouzeid, Jr., elected editor of the Golden Gater by the Board of Publications last May, will be unable to assume his post due to unforeseen family obligations.

Abouzeid, who was managing editor of the Golden Gater last year, is several units away from his degree. He will enroll at SF State and take a limited class load. He is now managing editor of the Pa-

California to control dorm food services

The SF State Foundation will lose \$46,000 of annual profit this year as a result of the State of California taking over the resident dining hall food service.

The Foundation, which operates the Commons and the Bookstore, has operated the residence food service since the dining hall opened last fall.

The State has taken over the operation so that profits generated from the service will go back to the students in the dorms, instead of being used by the entire campus. The State College Chancellor's Office requested the change so the State could have funds to build new residence halls.

According to George Changaris, housing co-ordinator, the change in management will not affect the quality, service or the menu of residence hall students.

SF State is the first state college to adopt this plan. It is also the only college that has a separate food operation for residence hall students. On other campuses, residents eat in one of the central campus dining facilities.

According to Fred Avilez, Foundation Director, the cut in profit will cut further Foundation contributions to

the building and the College Union funds.

Last year the dining hall served the dorm's 800 residents and took in \$456,000 in revenues.

Application for the halls went out on March 28 and by April 1 all vacancies were filled. 2300 women and 1000 men were turned away.

Preliminary plans for a new hall to house 600 women were submitted to the Chancellor's Office earlier this year. Changaris says that it is hoped building will start next year. Profits from the dining hall will help finance the project.

Club offers book listings

A clearing house for used books has been set up by the Business Club again this semester.

While not handling any books, the clearing house will have listings of books to be sold.

The prospective seller fills out a card listing the title, author, edition, division, course number of the book, asking price and his name, address and phone number.

The seller is required to pay four per cent of the asking price, or a ten cent minimum

'Mark' initiates fall Encore

"The Mark," a British drama about a would-be child molester, will be shown Tuesday, September 24, as the first of twelve films to be presented by the Encore Film Series this Fall.

Stuart Whitman, Maria Schell, Rod Steiger and Donald Wolfitt will be featured in the film scheduled at 3:45 and again at 7:30 p. m. in ED 117.

Other movies to be shown during the current semester include "A View from the Bridge," Oct. 1; "Shoot the Piano Player," on Oct. 8; "Saturday Night and Sunday Morning," Oct. 15; "General Della Rovere," Oct. 22.

A discount package is available to students, faculty, staff and alumni at Hut T-1. The package contains a choice of

any six films for \$2.40. Regular admission is 50 cents for members of SF State and 75 cents for the general public.



Volume 86, Number 1

Thursday, September 12, 1963

Editorial Office HLL 207

Phone JU 4-0443, or Ext. 570

Acting Editor: Jim Mildon



Published by the Associated Students of San Francisco State College, 1600 Holloway Ave., San Francisco, Calif. Entered at Daly City Post Office as third class matter. Subscription rate: \$2.50 per year, 10 cents per copy. Represented by National Advertising Service, Inc., 420 Madison Ave., New York 17, N.Y. Member of the Associated Collegiate Press. Printed by Gutenberg Press, 1950 Ocean Ave., San Francisco 27, Calif.

Ramsay's official policy

Giving students services not most important job

As President Tom Ramsay explained his philosophy to the Gater this week.

"Student government is a laboratory where one can experiment in real situations with the concepts and ideas

they give in textbooks and classrooms," he said.

"It is a student government tradition to give services to the student. While we, referring to the executive officers, accepted this, we do not feel

that this is the sole or most important function of student government.

He said the organization should provide a place for freedom of speech, such as the Speaker's Platform, just as it provides for freedom of artistic expression, such as the drama productions.

"I think the student government is a process that gives students their voice in the community," he said.

The only major change from last year's government will be the absence of the Human Relations Commission, he added.

"It was a good experiment, but it proved to be unsuccessful because it wasn't closely enough tied to the community that it attempted to support," he said.

"I don't think it's possible for a student government, predominantly white, middle class and liberal-moderate, to lead in the civil rights movement. Instead, I think we have to support other civil rights movements."

He added the AS would run smoother this year because its officers have had AS experience within the past year. Ramsay said he will have more time to talk with students and get their views and ideas, and will be able to leave most of the paper work to Vice-President Bob Hill.



AS PRESIDENT TOM RAMSAY
... the paper work goes over to Hill.

Announcing

THE FABULOUS FALL SEASON

AT YOUR

SURF THEATRE

San Francisco's First and Finest Repertory Cinema

Starting Tomorrow:

"SUNDAYS & CYBELE" and 'FORBIDDEN GAMES"

★ ★ ★

Opening Friday, Sept. 20:

EXCLUSIVE CALIFORNIA PREMIERE!

"JOAN OF THE ANGELS?"

Provocative Study of Sexual Conflicts Based on Huxley's

"DEVILS OF LOUDUN"

Plus: Bergman's **"DEVIL'S WANTON"** (Sept. 20-26)

Bunuel's **"VIRIDIANA"** (Sept. 27-Oct. 31)

★ ★ ★

EXCITING COMING EVENTS:

Cocteau's **"ORPHEUS"** and **'BEAUTY AND THE BEAST"**

* * *

Sophocles' **"ANTIGONE"** and **'OEDIPUS REX"**

FESTIVAL OF EARLY SOVIET CLASSICS

* * *

SHOOT THE PIANO PLAYER, ROCCO & HIS BROTHERS, LAST YEAR AT MARIENBAD, AND MANY MORE!

★ ★ ★

PICK UP THE COMPLETE FALL SCHEDULE AT HUT T-1 OR AT THE SURF THEATRE

STUDENT PRICE **STILL** 75 Cents With S.B. Card, on Mondays Through Thursdays, Except for Special Programs

Irving at 46th MO 4-6300
Open 6:45 p.m.

Concerning jocks and prostitutes

Peter Edwards



THE ODDS ARE PRETTY GOOD that you'll read this column while standing in one of those interminable registration lines. If such is indeed the case, then don't despair.

'CAUSE THERE'S a solution, for the lads among you at least. Next year, join the football team.

RIGHT NOW, while you're shoving in line, trying to forge your adviser's signature, yet still watch the new girls waggle their fresh little selves around the campus,—right now about 75 of the school's finest are out on the greensward, grotesque, padding and all, sweating out a practice for next week's opening game of the season.

FOR THEY, MY FRIENDS, even in the most deemphasized of footballing schools, are a privileged gang. In return for their devoted service to you, me, and SF State they get, among other things, the privilege of going through this bureaucratic muddle ahead of the likes of us.

NOT FOR THEIR highly tuned bodies the endless standing in line, worrying about conflicting classes, tough teachers, and the like.

WHY, IT MAKES a body feel downright proud to think of all those lumbering, sweaty, heroes out there just on our account. At least that's the reason they get their privileges, because of "service to the school."

★ ★ ★

WHEN YOU GET close to the end of registering, at about station 35, you'll be asked to contribute so much money for fees. The tuition's cheap, but please don't ask me how come we all have to pay \$10 a semester for a student activity card.

FOR I WOULD HAVE to tell you that one reason is the cost of fodder and stables for the herd chasing pigskins down at the football field.

YOU SEE, whether we like it or not we've already been assessed several grand to pamper the gridgers. And as you who attend the football games know, that's a lot of hay to pay for a team that some of us couldn't give a particular damn about.

★ ★ ★

GIRLS OF SF STATE, you've been slighted.

NOT BY THE BOYS, but by the red blooded among the faculty men.

Item: Cal coed and part-time prostitute/masseuse tells police, according to the downtown papers, that two of her regular customers were professors at SF State.

WHAT WE NEED here is a school loyalty oath. After all, business is pretty slow with most of those "girls" I know at SF State, and the least our teachers should do is go to them first.

Britain scholarship offer

Applications for a \$3000 plus Marshall Scholarship to study at a British university for two years can be obtained in AD 180.

The applications must be returned to the British Consulate - General, 343 Sansome Street, San Francisco 4, by October 22.

The scholarship includes a personal allowance of \$1540 yearly, in addition to a round-trip fare to Britain, tuition, \$70 book allowance, and \$70 extra if the student is working for his doctorate.

The only restrictions for applying are that applicants must be 25 years or under. Veterans can be 28.

Selections will be based upon high scholarship, all-around development, campus activities, and potential ability to be useful to Anglo-American understanding.

Students who stand the best chance of winning a Marshall Scholarship are: women, students of diversified interests, those who wish to study at a

British university other than Oxford or Cambridge, and applicants from Western universities. (At least four of the 24 available scholarships are guaranteed to the western US region).

FOLKSINGERS

PRESENTING BALLADS, BLUES, RAGS, REELS, COUNTRY, WESTERN, BLUEGRASS, OLD-TIMEY MUSIC, SONGS-OF-ALL-NATIONS... AND ALL THE REST OF THE INFINITE VARIETY UNCOVERED BY OUR MODERN FOLKSONG REVIVAL.



folklore productions

176 FEDERAL STREET
BOSTON 10, MASS.
TEL.: HUBBARD 3-1127

Manuel Gonzalez, mgr. / Arthur Gabel, asst.

Short or long term

Loans offer help

A college education costs a lot of money, even at a state supported institution such as SF State. Many students find themselves in financial difficulties during the college year, especially during registration.

The SF State College Loan Program is designed to assist students who are in dire need of financial help during the semester.

There are two types of loans:

- Short term loan of \$25 or less.
- Long term loan from \$25.01 to \$250.00 maximum.

The short term loan is obtained by signing a promissory note guaranteeing the loan be paid back within 60 days or by the end of the se-

mester if less than 60 days of the semester exist.

The long term loan is repayable according to a repayment schedule worked out between the student and the loan counselor. A promissory note must be signed by a co-signer over 21 years of age who is not a relative of the student, or an employee or faculty member of the college.

If the student is a minor, the note must also be signed by a parent. If he is married, the spouse must sign.

Students eligible are undergraduates with a minimum of 12 units and graduate students carrying nine units who have:

- Completed one full-time semester.
- Shown good academic standing (not on probation).
- Shown the need for edu-

cation-related funds (books, living expenses, etc.)

Students serving as a guarantor of a current loan may not apply.

There is a \$1 filing fee for all loans, which is payable to the college business office.

The Office of Student Financial Aid stressed that there is no money available for registration or residence hall fees and that no loans will be made 30 days prior to the end of the semester.

Applications for short term loans will be accepted beginning Sept. 23. Long term loans applications will be accepted beginning Sept. 30.

For further information, contact the Office of Student Financial Aid, AD 180 or phone 861-62.



ARE YOU AS READY FOR THE FALL TERM AS YOU THINK YOU'RE READY FOR THE FALL TERM?

Check off the items: Raccoon coat. Stutz Bearcat. Beanie. Bank of America Checking Account...

Bank of America Checking Account?

Naturally! It's the safest way in the world to pay bills (the cancelled check is your receipt). It's the perfect way to keep track of funds. And, it's economical!

Open yours today at B of A!

BANK OF AMERICA

NATIONAL TRUST AND SAVINGS ASSOCIATION • MEMBER FEDERAL DEPOSIT INSURANCE CORPORATION

STONETOWN BRANCH • 296 WINSTON DRIVE, SAN FRANCISCO, CALIF.

ISA offers new program to aid international students

International Student Affairs (ISA) has launched plans to integrate and coordinate activities between overseas and American students attending SF State.

Newest addition to the fast growing movement for making international students welcome is a coordinating council for international activities, to combine the activities of

Public Ed course set

A special course dealing with problems in public education will be offered on Monday evenings at Frederic Burk School.

The Parent-Faculty Club of Frederic Burk, in cooperation with the SF State Extension division, will have John Connelly, associate professor of education, leading discussions.

Topics will include curriculum development involving science, math, foreign language, social studies and language arts; academic and life-adjustment emphases; grouping standards; parent-teacher-pupil relationships; financing of public education; implications of integration, and new techniques in teaching.

The course will be held from 8 to 9:45 p.m. beginning September 23 and may be taken for one unit of college credit or audited.

the three organizations working closely with the overseas students.

These include ISA, the College Y, and the Overseas Council — one Associated Students, one campus club, and the third administration-sponsored.

ISA, now in its third semester, was organized under the leadership of 1962-63 AS President Jay Folberg. The group expanded from its original form as part of the People-to-People university program to a separate executive branch of the AS.

It now operates under AS President Tom Ramsay, and is connected with both People-to-People and the National Student Association.

Helen Marte, Philippine student, currently attending SF State, and newly appointed director of ISA, attributes the successful foundation of the program to Folberg.

"Last year," she said, "the biggest accomplishment was to stir up an international conscience, especially among student leaders.

"Last year's homecoming queen was an international student and an international student was elected as a National Student Association delegate.

"The committee chairmen in ISA were international students. It gave them the opportunity to work with American students on an equal level."

ISA and its earlier People-to-People group were instrumental in bringing the SF State international student to the attention of the campus.

They sponsored an international show to raise money for a scholarship fund, held folk dancing sessions, get-acquainted coffee hours, opened an ISA Lounge as a meeting place for overseas and American students, issued a handbook to help the new international student meet the problems of college life in the United States, and published a monthly newsletter.

According to Miss Marte, the activities begun last year will be continued.

The ISA Lounge, located in Hut D, will be open every day, as soon as classes begin. Miss Marte also hopes to initiate foreign language discussion groups.

Students interested in working with or getting acquainted with the ISA program should contact Miss Marte in the ISA office, Hut T-2.

Best seller by SF State prof is guide to San Francisco

On the best seller list here is "A Guide to San Francisco and the Bay Region," a Random House book authored by James Benet, associate professor of journalism at SF State.

Benet, a San Francisco Chronicle writer since 1948, include much of the history, culture, sights, amusements, hotels, restaurants, and socio-economics of the Bay Area in his comprehensive guide published last month.

The guide explores territory from Sacramento to Big Sur. The only factual mistake in its more than 500 pages is an artistic version of a cable car operated from an overhead wire.

While the artist obviously doesn't know San Francisco, Benet does. His acquaintance with the region draws on his family's participation in its life over several generations.

Benet's great-grandmother ran a boarding house here during the Gold Rush. His

father was the late poet and critic William Rose Benet. His aunt is novelist Kathleen Norris.

A graduate of Stanford, Benet has specialized on urban planning and education in recent years. He teaches Newspaper Editing here after years as a Chronicle copyreader and reporter. His byline still frequently appears on the Chronicle front page and he has contributed articles, reviews, and verse to many periodicals and has published two novels.

Benet dedicated his book to Jane, his wife who serves as the Chronicle's food editor. Together they sampled the products of the many establishments they review in the various Bay Area communities.

MAKE EXTRA MONEY

You get permission from women to deliver guaranteed hosiery for free trial. Easily done spare or full time. Just write orders. We deliver and collect. Earn to \$1.25 on each sale. Postcard brings FREE MONEYMAKING OUTFIT. Mack-Krafford Agency, Box 1831, San Francisco 1.

Official notices

Elementary Education Advisors

Students formerly in elementary education not enrolled in the Spring '63 semester contact Mrs. Shaver in ED 130 for information regarding advisors and advising packets. Continuing elementary education students who have no advisor consult the Department Bulletin Board outside Education 131.

Graduate Record Programs

Registration for the Graduate Record Examinations scheduled to be given on Saturday, October 12, 1963, closes on September 20, 1963. Registration forms are available in the Graduate Division Office, Administration Building, Room 171. The Aptitude Test is one of the requirements for admission to classified graduate status in programs leading to a master's degree or an advanced credential. The Area Tests or the Advanced Tests are required for advancement to candidacy in a number of fields. Students should consult the Graduate Study Bulletin to determine the requirements in their graduate major. Students signing up for these examinations must be currently enrolled, must have been enrolled in the College within the last year, or must have

received a permit to register for the subsequent semester.

Deadline: Organization Cards

All organizations must file three (3) organization cards listing officers for the Fall 1963, Semester in the Activities Office, Room 166, Administration Building.

The deadline for filing cards is: Friday, September 27.

If officers for the Fall Semester have not been elected by September 27, a temporary card must be filed by that date. Failure to do so will result in the withdrawal of organization privileges.

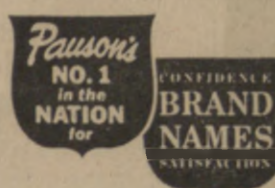
Master's Degree Programs

Candidacy for Master's Degree—Students who expect to earn their master's degree at the end of this semester must submit contract programs to the Office of the Dean of the Graduate Division, Administration Building, Room 171 on or before September 25, 1963. Before being filed at the office, the contract programs must be approved by the candidate's graduate major and related field advisers, and by the graduate committee of the candidate's major field. A candidate is required to complete at least six units of his contract program after submitting it to the Dean of the Graduate Division.



Mr. 'T'
presents
an unusual
value for
back-to-school
wardrobes...
**VESTED
SUITS**
in traditional
solid colors
and plaids
\$67⁹⁵

No Extra Charge
for Alterations



SAN FRANCISCO—KEARNY AT SUTTER • WESTLAKE SHOPPING CENTER



★ FRANK
"Mr. Traditional"
FALLS

manager of Pauson's
Traditional Shops and
a recognized authority
on authentic
traditional styling



. . . you, too, can have the finest service

coffee shop

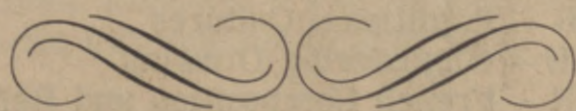
Snacks, Sandwiches, Fountain Items and a la carte Meals served in the open square. Open 7:15 A.M.-4:30 P.M. and 5:30 P.M.-9 P.M. Monday through Thursday. Closed Friday at 4:30 P.M.

redwood room

Brunch and Snacks served at the Buffet Counter. Open 9 A.M. - 1:30 P.M. Monday through Friday

international room

A la carte meals and student budget luncheons served in two serving lines. Open 7:15 A.M. - 4 P.M. and 5 P.M. - 7 P.M. Monday through Thursday. Closed Friday at 4:30 P.M.



STUDENT BUDGET LUNCHEON

The International Room will feature a discounted luncheon at the noon service hour from 11 A.M. to 1 P.M. The menu of this special priced luncheon will be posted daily. The price of the set luncheon at 79c includes a specified entree, any 15c salad, bread and butter, any 15c dessert and coffee, tea or 1/2 pt. milk. Because this meal is already discounted, it cannot be purchased with the Discount Meal Ticket.

DISCOUNT MEAL TICKET

The Discount Meal Ticket will be sold September 10th through 20th at a special booth outside The Commons. It is also sold daily throughout the year in the office of the Manager of The Commons.

The card contains cash denominations valued at \$10.00 and is sold to students, faculty and staff of the College at \$9.00, thereby giving the ticket holder a 10 per cent discount on all a la carte food and beverage items in The Commons.

THE

COMMONS

another service of

SE
FO
SC

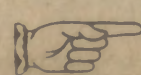
FOUNDATION

CALIFORNIA BOOK COMPANY

| Author | Title |
|-------------|--|
| ALARCON | — El Capitan Veneno |
| ALBRIGHT | — Principles of Theatre Art |
| ALDRED | — The Egyptians |
| ALEXANDER | — Modern Secondary Education |
| ALEXANDER | — Effective Teaching in Secondary Schools |
| ALLEDOERFER | — Fund. of Freshman Math. |
| ANDERSON | — Training the Speaking Voice |
| ANDERSON | — Improving Your Child's Speech |
| ANDERSON | — School Health Practice |
| ANDERSON | — Modern Europe in World Perspective (1914 to present) |
| ANDERSON | — Government and Business |
| ANDERSON | — Business Law |
| ANDERSON | — This Generation |
| ARBUTHNOT | — Children and Books |
| ASCO | — Perceiving Behaving, Becoming |
| ASHFORD | — From Atoms to Stars |
| BALKEY | — Understanding History of Civilization (paper supplement) |
| BAIRD | — Experimentation: An Introduction to Measurement Theory and Experiment Design |
| BALINSKY | — An Intro to Embryology |
| BALL | — From Beowulf to Modern British Writers |
| BALL | — First Year College French |
| BALSLEY | — Shorthand Transcription Studies |
| BARGER | — Money Banking and Public Policy |
| BARNARD | — Function of the Executive |
| BARNLUND | — The Dynamics of Discussion |
| BEALS | — An Introduction to Anthropology |
| BEAVER | — General Biology |
| BELL | — The Family |
| BERKOWITZ | — The Disturbed Child |
| BERNARD | — Social Problems at Midcentury |
| BERNSTEIN | — An Intro to Music |
| BERRIEN | — Human Relations |
| BERRY | — Race and Ethnic Relations |
| BIERSTEDT | — The Social Order |
| BILLINGTON | — Making of American Democracy (paper) |
| BINKLEY | — Grammar of American Politics |
| BLAIR | — Literature of U. S, Vol. II |
| BOIS | — Exploration in Awareness |
| BOLINGER | — Trade Analysis in Course Organization |
| BONE | — American Politics and the Party System |
| BONNER | — The Contemporary World |
| BOORSTIN | — The Americans |
| BOOTH | — Physical Science |
| BORDIN | — Psychoogical Counseling |
| BORST | — Social Games for Recreation |
| BOSSARD | — The Sociology of Child Development |
| BOYDEN | — An Introduction to Music |
| BRADLY | — American Tradition in Literature, Vol. I |
| BRANDT | — Value and Obligation |
| BRANSON | — Intro to Geology |
| BREDEMEIER | — The Analysis of Social Systems |
| BRENNAN | — Preface to Econometrics |
| BRENNAN | — General Psychology |
| BRINTON | — Modern Civilization |
| BRODY | — Highway Safety and Driver Education |
| BROUDY | — Phychology for General Education |
| BROOKS | — The Scope of Fiction |
| BROOKS | — An Approach to Literature |
| BROOKS | — Understanding Fiction |
| BROOKS | — Modern Rhetoric |
| BROWN | — Marketing and Distribution Research |
| BROWN | — The Motivation of Behavior |
| BROWN | — Communicating Facts and Ideas in Business |
| BROWN | — A-V Instruction Materials and Methods |
| BRUCE | — The Teacher's Personal Development |
| BRUCE | — American National Government |
| BRUMBEL | — Fundamental Concepts of Elementary Math |
| BRYANT | — Fundamentals of Public Speaking |
| BUGELSKI | — Introduction to Principles of Psychology |
| BURKE | — Financing Public Schools in the U. S. |
| BURNETT | — Natural History of Infectious Disease (third edition) |
| CALHOUN | — An Introduction to Social Science |
| CALVIN | — Psychology |
| CAMPBELL | — Patterns for Living |
| CARMAN | — A History of the American People, Vol. I to 1877 |
| CASONA | — La Dama' Del Alba |

| Author | Title |
|------------------------|---|
| CASTELLANO | — A New Shorter Spanish Review Grammar |
| CHANG | — La America Latina De Noy |
| CHENEY | — Story of Modern Art |
| CHINOY | — Society |
| CLARK | — Secondary School Teaching Methods |
| CLEMENS | — Marriage and the Family |
| COFFIN | — The Major Poets—English and American |
| COHEN | — Labor in the U. S. |
| COMBS | — Individual Behavior |
| COMMITTEE ON RETAILING | — Principles of Retailing |
| CONNOLLY | — Rhetoric Case Book |
| CONVERSE | — Elements of Marketing |
| COOK | — A Sociological Approach to Education |
| COPI | — Introduction to Logic |
| CORBIN | — Management in Marketing |
| CRAIG | — Europe Since 1815 |
| CRUICKSHANK | — Education of Exceptional Children and Youth |
| DALE | — Audio Visual Methods Revised |
| DAVIS | — The Modern Masters |
| DAVIS | — Human Society |
| DAVIS | — American Economic History |
| DEBOER | — The Teaching of Reading |
| DENOEV | — L'Heritage Francais |
| DICKEN | — Economic Geography |
| DIEHL | — Textbook of Healthful Living |
| DIMROCK | — Public Administration |
| DOHRS | — Outside Readings in Geography |
| DONALDSON | — Personal Finance |
| DRUCKER | — The Practice of Management |
| DUCHACEK | — Conflict and Cooperation Among Nations |
| DUDLEY | — The Humanities |
| DUE | — Intermediate Economic Analysis |
| DUNCAN | — Introduction to Physical Education |
| DURANT | — The Mansions of Philosophy |
| EELS | — Conceptual Foundations of Business |
| EISENSTADT | — History of America (since 1865; paper) |
| EISENBERG | — The Handbook of Skits and Stunts |
| ELLIOT | — College Math |
| EMMONS | — Geology |
| ERIKSON | — Childhood and Society |
| FAGOTHY | — Right and Reason |
| FARWELL | — Guidance Readings for Counselors |
| FAULKNER | — American Economic History |
| FERGUSON | — European Civilization, Part I to 1660 |
| FERGUSON | — European Civilization, Complete |
| FIESER | — Basic Organic Chemistry |
| FLEMING | — Understanding Music |
| FOSTER | — Traditional Cultures |
| FRENCH | — Engineering Drawing |
| FRASER | — French Composition and Reference Grammar |
| FREDERICKSEN | — The Child and His Welfare |
| FREUND | — Modern Business Statistics |
| FRIEDLANDER | — Introduction to Social Welfare |
| FRIES | — The Structure of English |
| FRITZ | — The Aggressive Child |
| FROMM | — The Sane Society |
| FRYE | — Anatomy of Criticism |
| FULLAGER | — Readings for Educational Psychology |
| GARRETT | — General Psychology |
| GARRISON | — Psychology of Exceptional Children |
| GASSNER | — Treasury of the Theatre |
| GARDNER | — The Forms of Fiction |
| GAW | — Advertising |
| GIESECKE | — Technical Drawing |
| GILLESPIE | — Accounting System |
| GILLISON | — Histology of the Body Tissue |
| GITLOW | — Economics |
| GLANZ | — An Introduction to Personal Adjustment |
| GLEASON | — An Introduction to Descriptive Linguistics |
| GOMBRICH | — Story of Art |
| GOODRICH | — A Short History of the Chinese People |
| GOODSPEED | — The Nature and Function of International Organization |
| GRASHAM | — Improving Your Speech |
| GREBANIER | — English Literature and its Background Vol. II |
| GREGG | — Speed Building Simplified |
| GREGORY | — Automatic Data Processing Systems |

| Author | Title |
|------------|---|
| GREY | — Economic Issues and Policies (paper) |
| GRIFFIN | — Anglo American |
| GRIFFIN | — Introduction to Math Analysis |
| GROSS | — The Legislative Struggle |
| HAAN | — Education for the Open Society |
| HAAS | — Dynamics of International Relations |
| HAGBOLT | — Intermediate German |
| HAGBOLT | — Elementary German Series |
| HAIMOWITZ | — Human Development (paper) |
| HALL | — Psychology |
| HALL | — Theories of Personality |
| HALL | — Leave Your Language Alone |
| HAMAILIAN | — Ten Modern Short Novels |
| HAMILTON | — The Consumer in Our Economy |
| HAMMOND | — Introduction to the Statistical Meth |
| HANFORD | — A Milton Handbook |
| HARRIET | — Art in Everyday Life |
| HARRISON | — Major British Writers |
| HARRISON | — Shakespeare, the Complete Works |
| HARLAN | — Contemporary Public Relations |
| HARISS | — The American Economy |
| HART | — America's Literature |
| HARTMANN | — Plant Propagation |
| HART | — Intermediate Algebra for College |
| HAWKES | — First Year Algebra |
| HAYAKAWA | — Language Meaning and Maturity |
| HAYAKAWA | — Language in Thought and Action |
| HAYNES | — Management |
| HEBB | — A Text of Psychology |
| HEGNER | — College Zoology |
| HEIZER | — The California Indians |
| HENDRIX | — Beginning French |
| HENSILL | — Biology of Man |
| HENNEKE | — Reading Around Effectively |
| HEWES | — Highway Engineering |
| HICKS | — Office Management |
| HIGDON | — Engineering Mechanics |
| HILL | — Introduction to Linguistic Structures |
| HOCKETT | — A Course in Modern Linguistics |
| HOEL | — Elementary Statistics |
| HOFFMAN | — Geography of Europe |
| HOFSTADTER | — The U. S. |
| HOGNESS | — Qualitative Analysis and Chemical Equilibrium |
| HOLDEN | — Selected Case Problems in Industrial Management |
| HOLLANDER | — Explorations in Retailing |
| HOMBERGER | — Foundation Course in German |
| HONE | — A Sourcebook for Elementary Science |
| HOLLISTER | — Teaching Arithmetic in Grades 1 |
| HOOTEN | — Up From the Ape |
| HOPKINS | — General Chemistry |
| HOUGHTON | — Victorian Poetry and Poetics |
| HOWELLS | — Mankind So Far |
| HUDSON | — Motor Transportation |
| HUMPHREYS | — First Principles of Atomic Phys |
| HUNNICUTT | — Research in Three R's |
| HUNT | — The Theory and Practice of Communis |
| HUNT | — Hand Wood Working |
| HUNT | — Patterns of Abnormal Behavior |
| HUTT | — The Child |
| IRWIN | — Health in Elementary Schools |
| JERSILD | — Child Psychology |
| JUNES | — A Guide to Effective Speech |
| JOHNSON | — American Government |
| JOHNSON | — Theory and Practice of the Social S |
| JOHNSON | — Financial Management |
| JOHNSON | — Your Career in Physical Education |
| KAGY | — Graphic Art |
| KANE | — Writing Prose (paper) |
| KAPLAN | — Studying Personality Cross-Cultural |
| KARR | — Developing Your Speaking Voice |
| KEMENY | — Introduction to Finite Math |
| KENNEDY | — Financial Statements |
| KEY | — Politics, Parties and Pressure Groups |
| KIMBALL | — Education and the New America |
| KNAPP | — Teaching Methods for P. E. |
| KOCH | — Psychology: A Study of Science |
| KOM | — Criminology and Penology |
| KORN | — Human Evolution |
| KOZMAN | — Methods in P. E. |
| KRAMER | — International Trade |
| KRAUSKOPF | — The Physical Universe |
| KRECH | — Elements of Psychology |
| KRIKORIAN | — Contemporary Philosophic Proble |



OCEAN AVENUE AT PHELAN

TD.

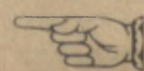
PRESENTS THE FOLLOWING USED SF STATE TEXTBOOKS FOR YOUR PURCHASE

| Author | Title |
|--------|--|
| GER | Principles of Microbiology |
| EN | The Psychology of Adolescent Development |
| MAN | The Economic System |
| RECHT | Our Philosophical Tradition |
| ON | The Modern Broadcaster |
| MO | Systems and Procedure |
| Y | Thought and Statement |
| | Oral Interpretation |
| | Customs and Crises in Communication |
| ANN | Review and Progress in German |
| RT | Social Pathology |
| ARD | Principles of Right Reason |
| NBERG | College Typewriting |
| | Personal and Social Development |
| T | Innovation in Marketing |
| | The Happy Family |
| EN | Meaning, Antidote to Anxiety |
| EN | Educational Psych in the Classroom |
| EN | Psych of Personal and Social Adjustment. |
| | American English and Its Cultural Setting |
| | Toward Liberal Education |
| IN | Economics of Transportation |
| WELL | Introduction to Physical Geology |
| KS | Comparative Economic Systems |
| | Marketing Research |
| BERG | Sociology |
| I | Projects in Oral Interpretation |
| DBY | Readings in Social Psych |
| LIS | The Enjoyment of Music |
| | World Masterpieces |
| EN | The Structure of Scientific Thought |
| | Psych in Industry |
| D | Espana |
| LAND | Principles of Modern Biology |
| IN | Child Behavior and Development |
| N | Elementary Accounting |
| ER | Langue et Civilisation Francaises I |
| R | Production Management |
| ARD | Sales Management |
| UR | Russia Tsarist and Communist |
| RNEY | Argumentation and Debate |
| RNEY | Guide to Good Speech |
| NDLESS | Children and Adolescents |
| RTHY | Basic Marketing |
| NIELS | Readings Guidance |
| NALD | Educational Psychology |
| AN | Principles and Methods in Secondary Education |
| NNEY | Counseling for Personal Adjustment |
| lan | Guiding Children's Growth Through Music |
| IR | Cases in Retail Management |
| | Types and Problems in Philosophy |
| R | Introduction to Math for Business Analysis |
| S | Accounting |
| ZER | Education in Society Readings |
| ER | The Study of Society |
| ITT | Working With Children in Social Studies |
| Y | The First Two Decades of Life |
| ON | Contemporary Social Problems |
| ERS | Source of the American Republic |
| LETON | These Are the British |
| ER | The Federalist ERA |
| GAN | Beginning Readings in French |
| HELL | Intramural Sports |
| NER | Reading for Writing |
| NER | Modern Short Stories |
| NER | Modern Journalism |
| NER | Modern Spanish |
| SON | Growth of the American Republic |
| Y | Scientific Principles in Nursing |
| E | The Culture of West Europe |
| ELLER | Probability With Statistical Application |
| Y | Psychology for Effective Teaching |
| ON | Mathematics of Finance |
| PHY | Properties of Engineering Materials |
| PHY | Creative Harmony and Musicianship |
| PHY | An Introduction to Geography |
| | Vector Mechanics for Engineers Part II, Dynamics |
| N | Charlar Repasando |
| ERRO | Manuel de Pronunciacion Espanola |

| Author | Title |
|------------|--|
| NEUMANN | European and Comparative Government |
| NEUMEYER | Juvenile Delinquency in Modern Society |
| NEUNER | Office Management |
| NEWCOMB | Social Psychology |
| NEWMAN | The Problems of Management |
| NIELSON | Missile Aerodynamics |
| NILES | Plane Trigonometry |
| NOLAN | Principles and Problems of Business Education |
| OGBURN | Sociology |
| OGINSKY | Introduction to Bacterial Physiology |
| OMER | Physical Science |
| OSGOOD | Method and Theory in Experimental Psychology |
| PADELFORD | The Dynamics of International Politics |
| PADEN | Statistics for Economy and Business |
| PARE | Descriptive Geometry |
| PARKHURST | Business Communication |
| PARSON | Conserving American Resources |
| PAYNE | Introduction to Astronomy |
| PEARSALL | The Californian's Writings |
| PELTASON | Functions and Problems of American Government |
| PERLMAN | Social Case Work |
| PETERS | Guidance |
| PETTINGILL | Ornithology |
| PHELPS | The German Heritage |
| PHENIX | Philosophy of Education |
| PHILLIPS | Municipal Government and Administration in America |
| PHILLIPS | Great American Short Novels |
| PIDDINGTON | An Introduction to Social Anthropology |
| PIERCE | Quantitative Analysis |
| PIERSON | Government of Latin America |
| PIGORS | Personnel Administration |
| POND | Essential Economics |
| POSTMAN | Psychology in the Making |
| POUNDS | The School in American Society |
| PRATHER | Financing Business Firms |
| PRIESTLY | Literature and Western Man |
| PRITCHETT | The American Constitution |
| QUICK | Gemcraft |
| RANDALL | Making of the Modern Mind |
| RANNEY | The Governing of Men |
| REDER | Labor in a Growing Economy |
| REDL | Mental Hygiene in Teaching |
| RETHLING | Motivation |
| REVZAN | Wholesaling in Marketing Organization |
| REYNOLDS | Labor Economics and Labor Relations |
| RICHARDSON | An Introduction to Statistical Analysis |
| ROBERTS | Patterns of English |
| ROBERTS | Understanding Grammar |
| ROBERTSON | History of American Economics |
| ROBERTSON | The Development of Modern English |
| ROGERS | Counseling and Psychotherapy |
| ROSENTHAL | Exploring Poetry |
| ROSS | The Fabric of Society |
| SACHS | Rise of Music in the Ancient World |
| SANDERS | Societies Around the World |
| SARANSON | Psychology Problems in Mental Deficiency |
| SARRET | Basic Principles of Speech |
| SARGENT | Social Psychology |
| SCHNEIDER | Experimental Physics for College |
| SCHNEIDER | Industrial Sociology |
| SCOTT | Political Thought in America |
| SEEHAFFER | Successful Television and Radio Advertising |
| SELWOOD | General Chemistry |
| SHAFFER | The Psychology of Adjustment |
| SHARP | German Reading Grammar |
| SHAW | Salesmanship |
| SHEED | Theology and Sanity |
| SHERIF | An Outline of Social Psychology |
| SHRODES | Approach to Prose |
| SHULTZ | American Marketing |
| SIELAFF | Introduction to Business |
| SILVIUS | Organizing Course Material |
| SIMPSON | Life |
| SISLER | General Chemistry |

| Author | Title |
|-------------|--|
| SKILLING | A Brief Text in Astronomy |
| SKINNER | Science and Human Behavior |
| SLADE | Math for Technical and Vocational Schools |
| SLICHTER | The Impact of Collective Bargaining on Management |
| SMART | Business Letters |
| SMITH | The Unreluctant Years |
| SMITH | Economic History of U. S. |
| SMITH | Modern Introduction to Organic Chemistry |
| SNYDER | American Foreign Policy |
| SOULE | American Economic History |
| SPAIN | Educational Leadership and the Elementary School Principal |
| STACK | Education for Safe Living |
| STANLEY | Social Foundation of Education |
| STEWART | Children and Other People |
| STOKES | Essentials of Earth History |
| STONIER | A Text of Economic Theory |
| STORER | General Zoology |
| SCAEFER | Qualitative Elemental Analysis |
| STEIN | Social Perspectives on Behavior |
| SWANSON | Music in the Education of Children |
| SWENSON | Physical Science |
| TAYLOR | Calculus With Analytical Geometry |
| TAYLOR | Financial Policies of Business Enterprise |
| TENNER | Municipal and Government Accounting |
| TERRY | Principles of Management |
| THOMAN | The Geography of Economic Activity |
| THOMAS | Calculus |
| THOMAS | Calculus and Analytical Geometry |
| THOMAS | German Anthology |
| THOMAS | Composition for College Students |
| THOMPSON | Educational Psychology |
| THOMSON | Europe Since Napoleon |
| THORTON | The Community Junior College |
| THORPE | Psychology of Mental Health |
| THRALL | A Handbook to Literature |
| TINKER | Teaching Elementary Reading |
| TOUSLEY | Principles of Marketing |
| TOWNSEND | Introduction to Experimental Method (paper) |
| TUTTLE | Text of Physiology |
| TYLER | The Psychology of Human Differences |
| ULMER | Economics |
| VAILE | Marketing in the American Economy |
| VANCE | Industrial Administration |
| VANCE | Accounting Principles |
| VANDELL | Case Problems in Finance |
| VAN DOREN | Industrial Design |
| VAN DYKE | Political Science |
| VAN DYKE | International Politics |
| VILLEE | Biology |
| VILLERS | Dynamic Management in Industry |
| WAHLQUIST | The Administration of Public Education |
| WALLBANT | Civilization, Part I and II |
| WALSH | The Use of Imagination |
| WALTER | Thinking and Speaking |
| WANEIOUS | Personnel Typewriting |
| WARNOCK | The World "in Literature," Vol. I |
| WATERS | Administering the Going Concern |
| WATSON | Psychology of the Child |
| WEICHERT | Anatomy of Chordates |
| WEINBERG | Casebook in Abnormal Psychology |
| WESTING | Readings in Marketing |
| WESTON | Managerial Finance |
| WHEELER | Regional Geography |
| WHEELWRIGHT | The Burning Fountain |
| WHITE | Lives in Progress |
| WHITE | 17th Century Verse and Prose |
| WHITE | College Geography |
| WHITING | Introduction to the Theatre |
| WICKENS | Psychology |
| WILLIAMSON | Growth of American Economy |
| WILLIAMS | History of U. S. (to 1876) |
| WISE | College English |
| WIXON | Accounting |
| WOODS | The Literature of England, Vol. II |
| WOODWORTH | Contemporary Schools of Psychology |
| WRIGHT | A Primer for Playgoers |
| WRIGHT | Advertising |
| WRIGHTSTONE | Evaluation in Modern Education |
| YOUNG | Materials and Processes |
| YOUNG | Sociology and Social Life |
| ZIERER | California and the Southwest |

ACROSS FROM CITY COLLEGE



Delegates against joining NSA

Eight of the nine SF State delegates who attended the National Student Association Conference this summer are against the Associated Students permanently joining the organization.

The AS joined NSA, comprised of colleges throughout the United States, last year on a tentative basis. The student body will vote this semester on whether or not to permanently join NSA.

Attending the two week conference at Indiana University last month were AS President Tom Ramsay, Speaker of the Legislature Bill Burnett, SF State NSA coordinator Jim Nixon and delegates Aditma Mukerji, Dick Bakkerud and Robin Mighell. Andy Weiling, AS treasurer, Joe Persico and Ken Bowman attended the conference as alternate delegates. Bowman was the only one who thought that SF State should continue membership in NSA.

Ramsay criticized the organization on three points. "The vast majority of the problems discussed at the conference were problems that

we solved here 10 years ago," the president said. As examples he cited approval of speeches, pre-publication censorship and en loco parentas that are found on other campuses but, according to him, are not found at SF State.

"I don't think NSA represents the student. It is an organization of the student government and not of the student body. Most of the delegates were there by student government presidential appointment.

"I believe that conferences are good things—for the student. Some of the people whom I appointed to go I felt were the most unsophisticated people in the AS. But they were head and shoulders above the other college delegates. They ended up working as resource people," Ramsay said.

Ramsay, who was elected to the AS president's board of directors and as floor manager of the liberal delegation, left the conference two days before it was over to hitch-hike to New York.

"It was obvious during the demonstrations at the end of the last semester that we were going to be involved in civil rights and with the sophomore level at the conference I felt that I could better spend my time in New York," Ramsay said.

Ramsay decided to go to New York after he met Robert Moses, Field Secretary of the Student Non-Violent Coordinating Committee and head of the voter registration in Mississippi, and Peter Countryman, founder of the Northern Student Movement. SNCC is a direct action group in the area of civil rights in the South. NSM was founded as a fund raising committee for SNCC but has broadened to become a direct action civil rights group in the north.

In New York he spent a week and a half in Harlem "talking to everyone." He talked to Domestic Peace Corps people, representatives from all the organizations working there, Black Muslims, labor people, and met "over a 100 people." Most of the discussions referred to

what students could do in the civil rights movement.

"Civil rights is probably the most emotionally charged, but intellectually frustrating, movement that exists on this campus.

"I expect that by June we'll have 300 to 400 people working under Negro leadership in the slum areas of the city," Ramsay said.

The Bay View Citizens Committee has already asked SF State students for help with some of their problems in the Hunters Point area.

"We may have a better knowledge of the techniques to be used in these situations but their knowledge of the psychology of people in a slum situation make it inevitable that we will have to follow their leadership," he said.

Can't drive? It's sporting

Students with a driving ambition, but who don't know how to drive, can learn through the sports department.

A special class, without credit but free of charge, is open during registration days for students interested in learning the fundamentals necessary to wheel onto the open road.

Sign-ups are being taken in the Health-PE building with the secretary or with Richard Boyle.

Model UN

The Model United Nations will hold an organization meeting Thursday, September 19, at 12:15 in AD 164.

Fall Schedules

COMMONS

| | | |
|-----------------------|-------------------------|------------------------------------|
| Monday through Friday | | |
| Breakfast | 7:15 a.m. to 10:45 p.m. | Main Dining Room Harlequin Room |
| Lunch | 10:45 a.m. to 2:15 p.m. | Main Dining Room |
| | 10:45 a.m. to 2 p.m. | Harlequin Room |
| Coffee | 2 p.m. to 4 p.m. | Main Dining Room |
| | 2 p.m. to 4:30 p.m. | Harlequin Room |
| Monday through Friday | | |
| Dinner | 5 p.m. to 7 p.m. | Main Dining Room |
| | 5:30 p.m. to 7 p.m. | Harlequin Room |
| Snacks | 7 p.m. to 9 p.m. | Harlequin Room |

LIBRARY

| | |
|-------------------------|----------------------|
| Main Library | |
| Monday through Thursday | 8 a.m. to 10 p.m. |
| Friday | 8 a.m. to 5 p.m. |
| Saturday | 9 a.m. to 5 p.m. |
| Sunday | 1 p.m. to 5 p.m. |
| Garden Room | |
| Monday through Friday | 7:30 a.m. to 11 p.m. |
| Saturday | 9 a.m. to 5 p.m. |
| Sunday | 1 p.m. to 11 p.m. |

BOOKSTORE

Friday, September 13, until 8 p.m.
Saturday, September 16, 9 a.m. to 1 p.m.
Monday, September 16, through Thursday, September 19, until 8 p.m.
Monday, September 16, through Wednesday, September 25, until 7 p.m.



When Godiva, that famed lady fair,
Told her husband, "I've nothing to wear,"
With his Swingline in hand,
He stapled a band
And said, "Wear this, my dear, in your hair!"

SWINGLINE STAPLER



98¢
(including 1000 staples)
Larger size CUR Desk Stapler only \$1.49

No bigger than a pack of gum
• Unconditionally guaranteed!
• Refills available anywhere!
• Get it at any stationery, variety, or book store!
• Send in your own Swingline Fable Prizes for those used

Swingline INC. LONG ISLAND CITY 3, N. Y.

now at
WESTLAKE STATIONERS
in the
Westlake Shopping Center
327 South Mayfair Ave.

It alone is worth
the price of
northern California's
most exciting
SUNDAY newspaper!



BOOK WEEK

(in gravure)

Current, lively, Book Week brings you the best of American criticism, handsomely illustrated, and—printed in gravure. Book Week ... one of a dozen bright parts of the Spectacular Sunday Examiner. Pick it up Sunday!

SAN FRANCISCO EXAMINER

Northern California's biggest Sunday newspaper circulation, because it's northern California's biggest Sunday newspaper.

Westlake Stationers

KEEP TYPEWRITER REPAIR BILLS DOWN. ALL MAKES OF TYPEWRITERS CLEANED, OILED, AND SERVICED FOR JUST

\$2.50

NEW TYPEWRITER RIBBON INCLUDED FREE UPON DISPLAY OF STUDENT BODY CARD

TYPEWRITER SALES, RENTALS

• STANDARDS • PORTABLES • ELECTRICS

Architectural and Engineering Supplies

You Need It for College

We Have It!

WESTLAKE SHOPPING CENTER — 327 SOUTH MAYFAIR

Health Center staff cut limits services offered

By JACK HUBBARD

One happy and unhappy aspect of registration is the absence of the rigorous physical examination that has been given to all new students in past years.

The happy side is that students don't have to spend from four to five hours standing in line waiting to undergo a check-up on everything from athlete's foot to a chest X-Ray.

The unhappy flip of the coin is that as a result of fifty per cent cut in staff at the Student Health Center, students at SF State are being deprived of many medical services that were provided in the past.

The staff cut came as a result of action taken by the State Legislature this summer which cut all part-time medical staff from the State College Health Service.

The budget cut has severely limited the ability of the Health Center to administer an effective medical program, according to Director, Dr. Eugene Bossi.

"The physical exam has now been reduced to a rudimentary health exam," Bossi said.

"In addition, our medical staff has been cut in half, drastically changing the philosophy as well as the scope of our service."

"We must attend to the basic medical needs of our students and in doing so will now have little time for anything else. This constitutes a regression to the basic type of medical service which was provided prior to World War II."

By "anything else," Bossi was referring to the consultation service offered to students by the Health Center. Also included are such items as psychiatric counselling and limiting the total of visits for a given illness to three instead of an unlimited number.

Bossi said that sufficient X-Ray, laboratory and physical therapy services will still be offered.

According to AS President Tom Ramsay, the student health plan offered to students at \$10.50 a semester is still in effect.

ON MONDAY: The Cut: Why it was done, how, and its effects on the students.

Student earns \$9000-plus by listening closely to prof

According to Ron Crandall, the \$48 registration fee is a bargain. At least it is on the basis of his experience with one three-unit geology course.

In success story parlance, Crandall has parlayed his geology course into several sources of income.

It all started last spring when Dr. Ray Sullivan, taking his Geology 34 class to the East Bay, pointed out some white sand near Nortonville as having "potential economic value."

Crandall was in the class, took note of and interest in Sullivan's words, and had a friend look into the market.

They secured the mining rights to the area, and as a result, Crandall expects to make "around \$9,000" from a contract with Owens Corning Ware.

Sullivan discovered his student's success after the final exam in June, when Crandall thanked him for a "profitable" semester.

But that's not the end of the story. On the basis of his one

geology course, Crandall, now teaching at Half Moon Bay High School, hired himself out as a consulting geologist to a business firm, and collected \$300 for two days work.

Since his last experience this tycoon in embryo has been laying plans for his own consulting agency, whereby he'll put businesses in touch with expert geologists—mostly college teachers—when they need some work done.

So there's at least a possibility that Dr. Sullivan, who

so recently taught Crandall all the geology he's had, will soon be working for him.

Meantime Sullivan, who feels he could have had the \$9,000 if he'd thought of it earlier, is expecting all his classes this fall to be full.

"However," Sullivan said, "I hope we don't get anyone who expects me to make them rich overnight. But in case that should happen, I'm working out a little arrangement whereby I get ten per cent of everything."

Eat extra dollar's worth at campus dining spots

Discount meal tickets, good at any of the campuses' food services, will be on sale in front of the Commons next week.

The \$9 tickets, good for \$10 worth of food, have changed slightly from last year. Certain denominations, the ones used more often, have been increased and others have been dropped.

The cards now fold over for easier storage in wallets and are considerably stronger.

One change in use from last year has been made. The cards will no longer be valid during the summer session. This is due to the anticipated increase in prices at that time.

Later in the semester, tickets will be on sale in the Commons office.

FOR GENTLEMEN OF ACTION

ON OR ABOUT THE CAMPUS

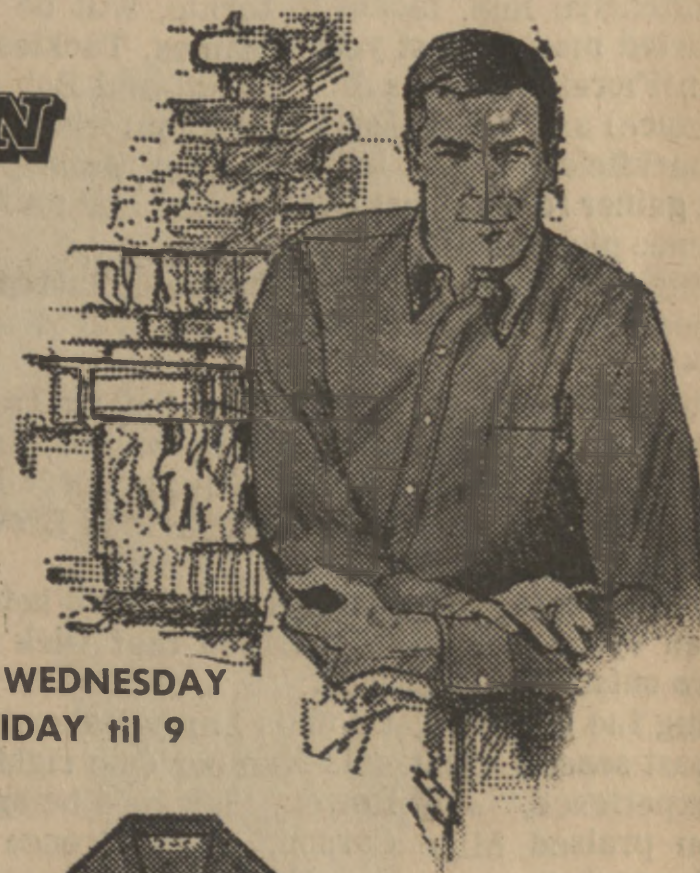
To enter into the university collection of this emporium, sportswear must pass a number of strenuous tests. Therefore whatsoever is purchased here may be put to rigorous use. It will retain its handsome appearance for a satisfactory term.

STUDENT CHARGE PLAN AVAILABLE

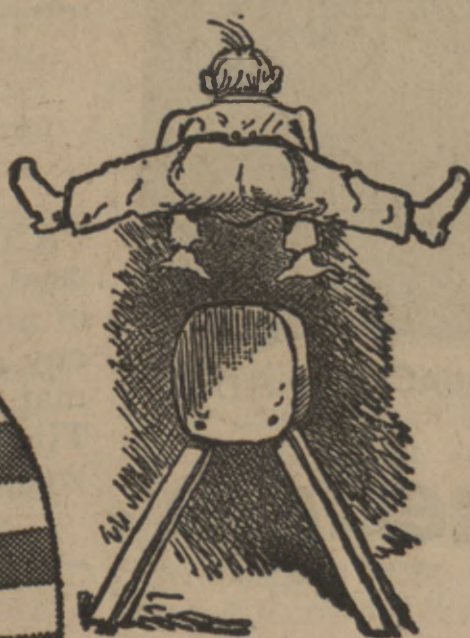
OPEN WEDNESDAY & FRIDAY til 9



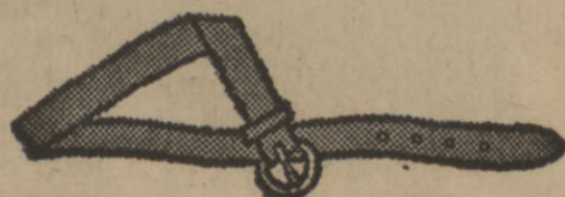
359 S. MAYFAIR PL 6-9323 WESTLAKE SHOPPING CENTER



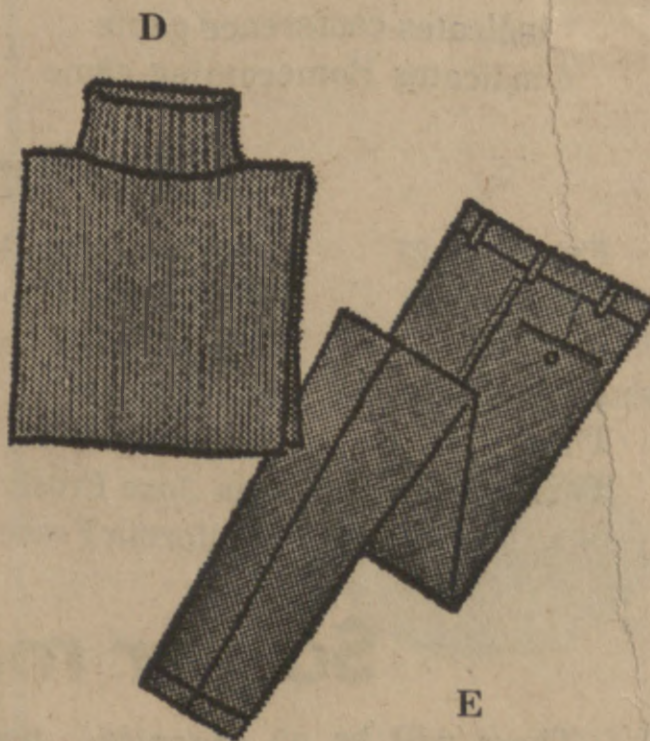
A



B



C



D

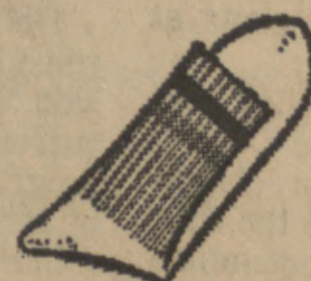
E



F



H



G

- a. The Rugby Shirt\$ 9.00
- b. The Jacket (Pile Lined) 15.95
- c. The Beltfrom 2.95

- d. The Dickey\$ 3.00
- e. The Slacksfrom 5.95

- f. The Lambswool Pulloverfrom 12.95
- g. The Crew Socks 3 for \$2.75
- h. The Mohair Pullover\$19.95

Gator football season coming

By REED NESSEL
Gator Sports Editor

Gator grid coach Vic Rowen, "pleased" with the progress made thus far by his offensive unit, is somewhat troubled by the showing his defensive squad has been making. of the defense," said Rowen, "And this is just the opposite of the way things generally run."

"At this point, I would say that the offense is definitely ahead Contributing to this slowdown in the defensive development have been injuries suffered by three men whom Rowen considered as starters in his defensive line.

Veteran tackle Ted Freeman broke a thumb on the third day of practice, and has been lost to the squad since then. Rowen hopes that he will be set for the September 21st opener against Cal Poly of San Luis Obispo, but he cannot be sure.

Secondly, Ernie Oliver, a sizeable transfer student from CCSF, injured his knee, and underwent an operation last Tuesday.

John Cuthbert, a veteran Gator lineman, did not sufficiently recover from a knee injury he suffered last season, and has elected to quit playing football.

The loss of these men to injury, plus the loss to graduation of most of last season's defensive backfield, has put Rowen in the position of having to rebuild defensively.

"Our defensive backfield will be very young," said Rowen, "we'll be going with sophomores and juniors."

Tim Tierney, who missed a good deal of last season with a broken arm, and Charlie Mathews, who was switched to the deep back position from end last year, are the two experienced men that Rowen has returning in this spot.

The linebacking will be in capable hands, with Angelo Crudo, Ted Locicero, John Escobar and Jerry Akiyoshi all available for duty, along with CCSF transfer Dennis Drucker.

Defensive end Don Rodrigo returns to that spot.

If the concern over his inexperienced defense unit puts wrinkles of worry over Rowen's brow, then the thoughts of his offense should wrinkle his face with smiles.

The offensive line, tackle to tackle, will be the same crew that started most of last year's games. Tackles Paul Richards and Jim Fiorello, guards Jim Borelli and Bob Griffin (an All-FWC choice) and center Dave Wylie comprise the forward wall.

The backfield features halfback Tom Manney, leading Gator ground gainer for the past two seasons and an All-Far Western Conference pick last year.

At wingback will be Don Richardson, last season's leading pass receiver with 23 catches for 383 yards and four touchdowns.

The fullback spot, which could have been a troublesome position with last season's starter, Greg Baines, dropping out because of injuries, has been filled ably by Jerry Brown, a transfer from Cabrillo College. Rowen described Brown as "the find of the practice season."

The battle for the quarterback spot is still being waged, with four men vying to fill the position that Dick Valois vacated after two outstanding seasons.

Leading the group right now is Larry Baker, who backed up Valois last season. "Baker is Number One right now by virtue of his experience," said Rowen, "but he's being pushed."

Rowen praised Mike Carson, all-conference Gator basketballer, by saying:

"Carson has come a long way for someone that hasn't played football for three years."

Also in the running for the spot are Ken Johnson, an outstanding Junior College passer at Cabrillo who sat out last season with a shoulder injury, and Mike Burke, a newcomer to the varsity.

Whoever is doing the throwing, the receivers will be big and experienced. Benny Enea, a starter last year will be back, along with Dick Balswick, also a vet, and transfer Gary Chiotti from Foothill College.

Rowen was also pleased with the spirit shown by his squad.

"This team has really been working," said Rowen, "They have hustled harder than any team we've had in a long time."

Students may have to pay admission

Students attending SF State football games this fall may have to shell out 50 cents at the gate.

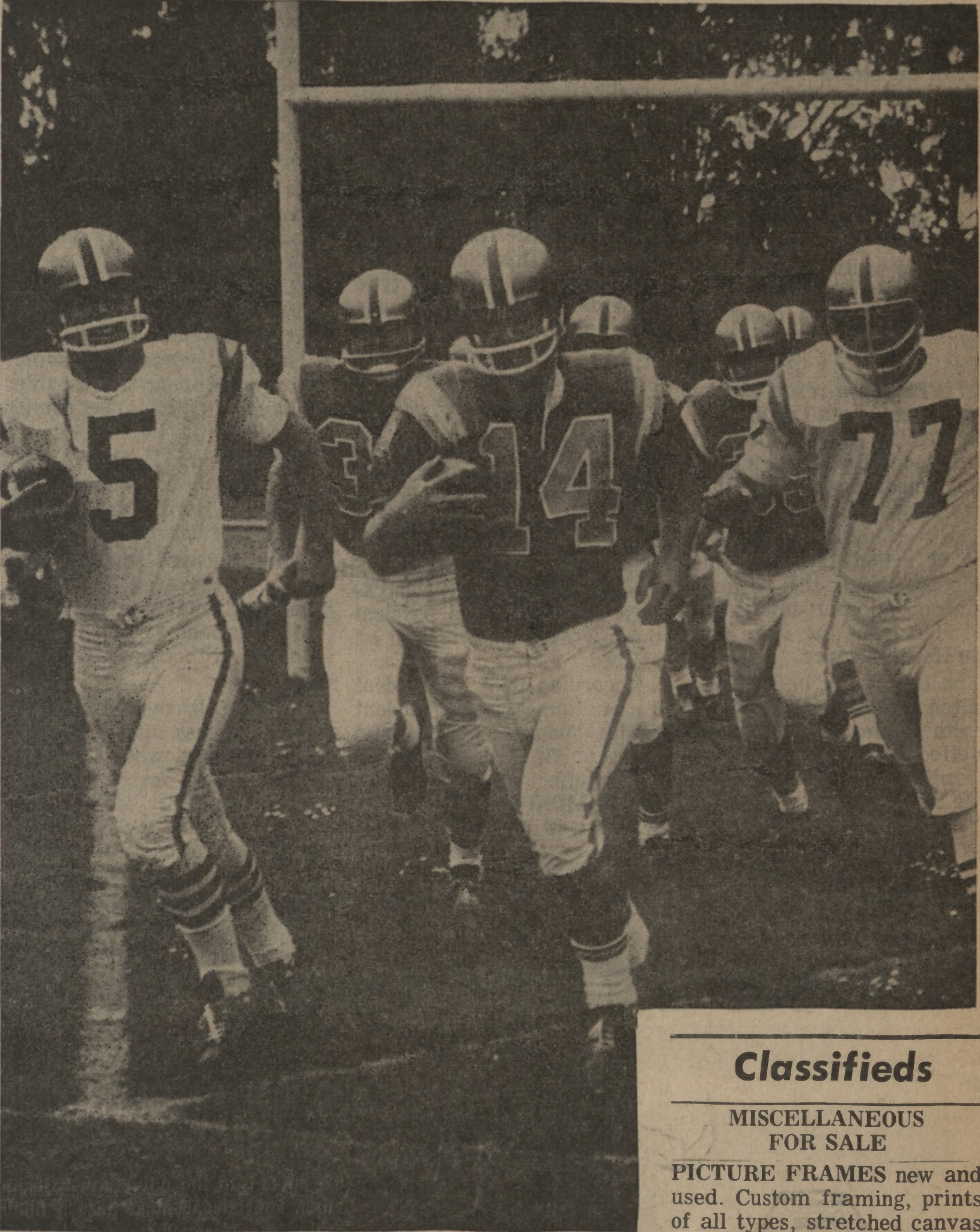
A resolution requesting that the Board of Athletic Control enact this admission charge will be introduced at the first meeting of the AS Legislature today, according to Legislature speaker Bill Burnett.

If the resolution is passed by the legislature, the Board of Athletic Control is expected to meet the following Friday to

act upon it, according to Burnett.

The admission charge is considered necessary, Burnett said, in order to maintain the current level of the athletic program while meeting rapidly rising costs.

One of the reasons for the rising costs, Burnett said, was the cutback in Health Service programs. This has thrown the burden of athletic health examinations onto the Associated Students, he said.



GATOR GRID HOPEFULS TAKE TO THE PRACTICE FIELD

Gator grid schedule

Varsity

| | | |
|----------------|-------------------------------|-------------|
| Sat., Sept. 21 | Cal Poly, S L Obispo (1-12-1) | H 1:30 p.m. |
| Sat., Sept. 28 | Long Beach State (6-0-0) | H 1:30 p.m. |
| Sat., Oct. 5 | Cal Poly, Pomona (5-1-1) | A 8:00 p.m. |
| Sat., Oct. 12 | Santa Clara (1-0-0) | A 8:00 p.m. |
| Sat., Oct. 19 | *Sacramento State (9-0-0) | A 2:00 p.m. |
| Sat., Oct. 26 | *U. C. Davis (12-6-1) | A 2:00 p.m. |
| Sat., Nov. 2 | *Humboldt State (11-10-1) | H 1:30 p.m. |
| Sat., Nov. 9 | *Chico State (15-11-2) | A 8:00 p.m. |
| Sat., Nov. 16 | †*Nevada (10-2-1) | H 1:30 p.m. |
| Sat., Nov. 23 | San Diego State (1-5-0) | H 1:30 p.m. |

SF State record against opponent in parentheses

* indicates conference game
† indicates Homecoming game

Junior Varsity

| | | |
|----------------|----------------------|--------------|
| Fri., Sept 27. | California Ramblers | H 3:00 p.m. |
| Fri., Oct. 4 | Moffett Field | A 3:00 p.m. |
| Fri., Oct. 11 | Marin Junior College | A 8:00 p.m. |
| Sat., Oct. 19 | San Quentin | A 12 noon |
| Thur., Oct. 24 | Santa Clara JV | A 3:00 p.m. |
| Thur., Oct. 31 | San Jose Frosh | A 2:30 p.m. |
| Sat., Nov. 9 | California Frosh | A 10:00 a.m. |

Soccer meeting

There will be an organizational meeting tomorrow for this year's Gator soccer team.

According to Coach Art Bridgeman, there is a definite

need for players, especially foreign students who have had some experience at the sport, and a manager.

The meeting will be held at 3 p.m. in Gym 310.

Classifieds

MISCELLANEOUS FOR SALE

PICTURE FRAMES new and used. Custom framing, prints of all types, stretched canvas any size, glass, moulding and mat boards. PARKSIDE PICTURE FRAMING, 930 Taraval, off 19th Ave. MO 4-8922. MFS 9/25

HELP WANTED PART-TIME

Earn \$40 weekly and up. Work 16 hrs. eves and Sats. Apply 1745 Van Ness, SF. 3:59 P.M., Tues and Thurs. Sat. 8:59 A.M. HW 9/18

RENTALS

ROOM FOR RENT in private home. 2 blocks from college. Nicely furnished. Radio, linens & towels furnished. \$60.00 mo. DE 3-8097. R 9/18
NEW large basement room. Separate bath, private entrance. Available after Sept. 16th. JU 5-7910. R 9/18

TYPISTS

Professional Typing. Accuracy guaranteed. Reports prepared according to exact specifications. Reasonable rates including all supplies, copies and proof reading. Estimates given with no obligation. Rush jobs welcome. Janice Tate, 233-8234 or 232-5299. T 9/25

TYPING — ALL KINDS—EXPERT. Grammar, spelling and punctuation guaranteed. Convenient to college. LO 4-1806. T 1/8

PROF. TYPIST. Guaranteed accuracy in spelling, punctuation and form. Term papers, theses. Close to College. LO 4-3868. T 1/8

Gerth moves up

Donald R. Gerth, assistant dean of students in charge of admissions and records, announced today that he is leaving SF State to assume the post of associate college dean of instruction and student affairs in the state wide Chancellor's office.

Gerth begins a leave of absence from SF State Oct. 1, to take over the state college system position.

"This is a more responsible job, a chance to work on program development for the entire state college system," Gerth said.

"I am not resigning," he added. "This is a leave-of-absence. I leave the college with regret. I have enjoyed my relations with my colleagues and with faculty members."

Gerth predicts a great future for State colleges in California.

"We have the greatest system of higher education in California that the world has

ever seen. We have to start pulling together to keep moving," he said.

"We have the chance in California to conduct a program of universal college education," he added. "As far as we know, 57 percent of last spring's high school graduates will enter college this fall.

"SF state is a great college with a great future."

According to Dean of Students Ferd Reddell, no replacement has been decided on for Gerth's vacant post.

A statement issued from Dean Reddell's office indicated that a replacement would be named by Oct. 1, when Gerth will leave SF State to assume his new position.

Parking cards on sale -- \$13

Student parking permits will be available during the registration period in Gym 215. The fee is \$13 for the Fall semester.

The garage entrance is located behind the college on Lake Merced Boulevard. No fee is required upon entering, but a card-key or a quarter is needed to operate the gate when leaving.

After registration, permits will be on sale in the Cashier's Office, AD 201.

Resolution...

(Continued from Page 1)
of the faculty regarding the appointment of administrative officers and the development of the reorganization plan."

The small opposition to the resolution, in the person of Dr. James Storey, head of the art department, was defeated. Storey said that such a document would give too much credence to the articles in the San Francisco dailies.

"We came here to work, let's get started," Storey said, to a smattering of applause.

Franciscan needs staff

Searching for status at SF State?

Get some the interesting way—join the staff of the '64 Franciscan.

SF State's new type of yearbook needs artists, photographers, and writers to cover the events of the academic

year. Many opportunities exist for photo essays, art layouts, and feature articles on campus activities.

The course may be taken for two units of credit by signing up for Journalism 103. Further information is available in the Franciscan office, HLL 204.

Dodd greeting...

(Continued from Page 1)

curing joy to the experienced. To move on into the classrooms and meet with the faculty of the college brings one to the heart of the institution.

The decision which you made to enter or return to San Francisco State College has brought you to the core of the institution. This decision, yours alone to make, will be a determining factor in your life. All experiences of the future will be tempered by it.

You have declared yourself. You have entered into a relationship with a particularly vital center of experience. What you learn will continually stimulate and excite you; the remembrances you draw will be with you throughout life.

As president of San Francisco State College, it is my pleasant reward to offer you welcome.

Dr. Paul Dodd

Yearbook extra section coming

The supplement of the '63 Franciscan will be on campus the last week of September. This sixteen page addition to the yearbook includes articles on the Contemporary Arts Festival, the new AS officers, and commencement.

Photographers!



Put your valuable talents to work for The Golden Gater

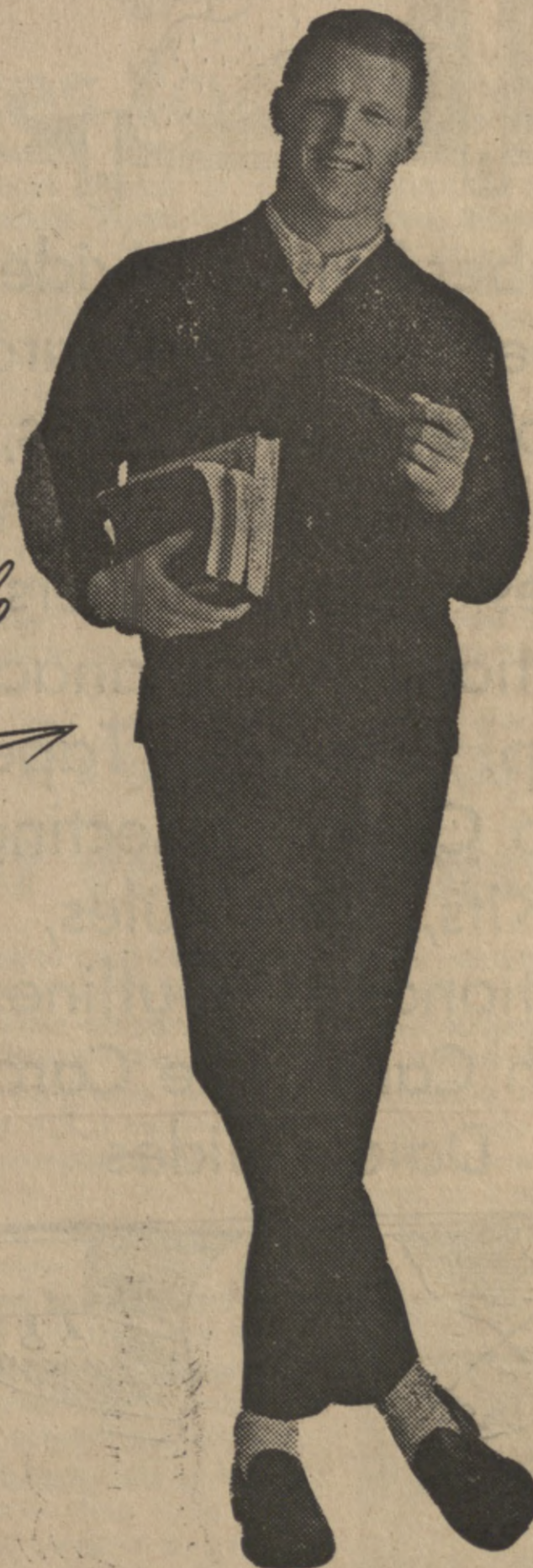
Hillel sets first dance Saturday

The Hillel Foundation of SF State will hold its first dance Saturday, September 14, at Sherith Israel Temple, California and Webster Sts.

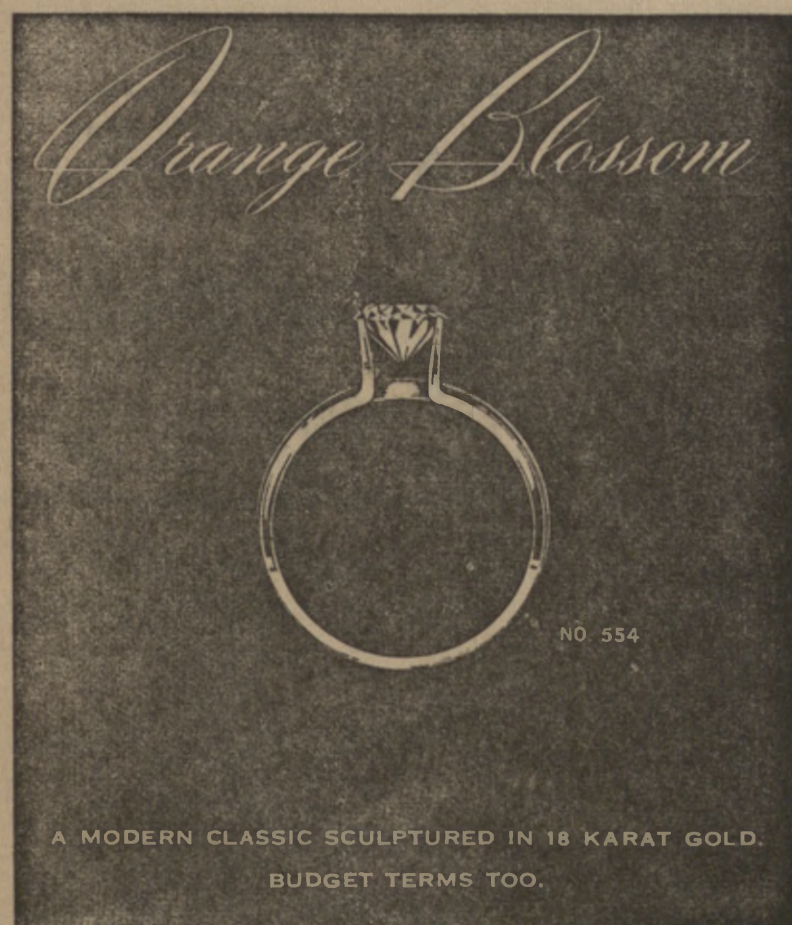
Admission to the dressy-sport event is free to Hillel members; membership cards will be sold at the door. There will be a fee of \$1 for non-members.

Hillel President June Stern announced that Foundation services for the High Holidays will be held for students. Information may be obtained from her in Mary Ward Hall.

Other activities planned for the semester include Israeli folk dancing, conversational Hebrew classes, and lectures. Business meetings are held on Thursdays.



*Another important book -
my Crocker-Anglo
Checkbook
(IN HERE)*



MODERN DIAMOND RINGS
FOR YOU AT CRESALIA JEWELERS...
GUARANTEED FINEST QUALITY...
BELOW MARKET PRICES

**CRESALIA
JEWELERS**
Second Floor

278 POST STREET, S.F. 8
PHONE SU 1-7372
Phone for Information
post street since 1912



... most helpful bank of all

MARCMERCEC OFFICE
35 Cambon Drive
San Francisco

OVER 120 OFFICES IN CALIFORNIA • MEMBER FEDERAL DEPOSIT INSURANCE CORPORATION

It's handy to pay by check... and it's only minutes to the best place to open a checking account:

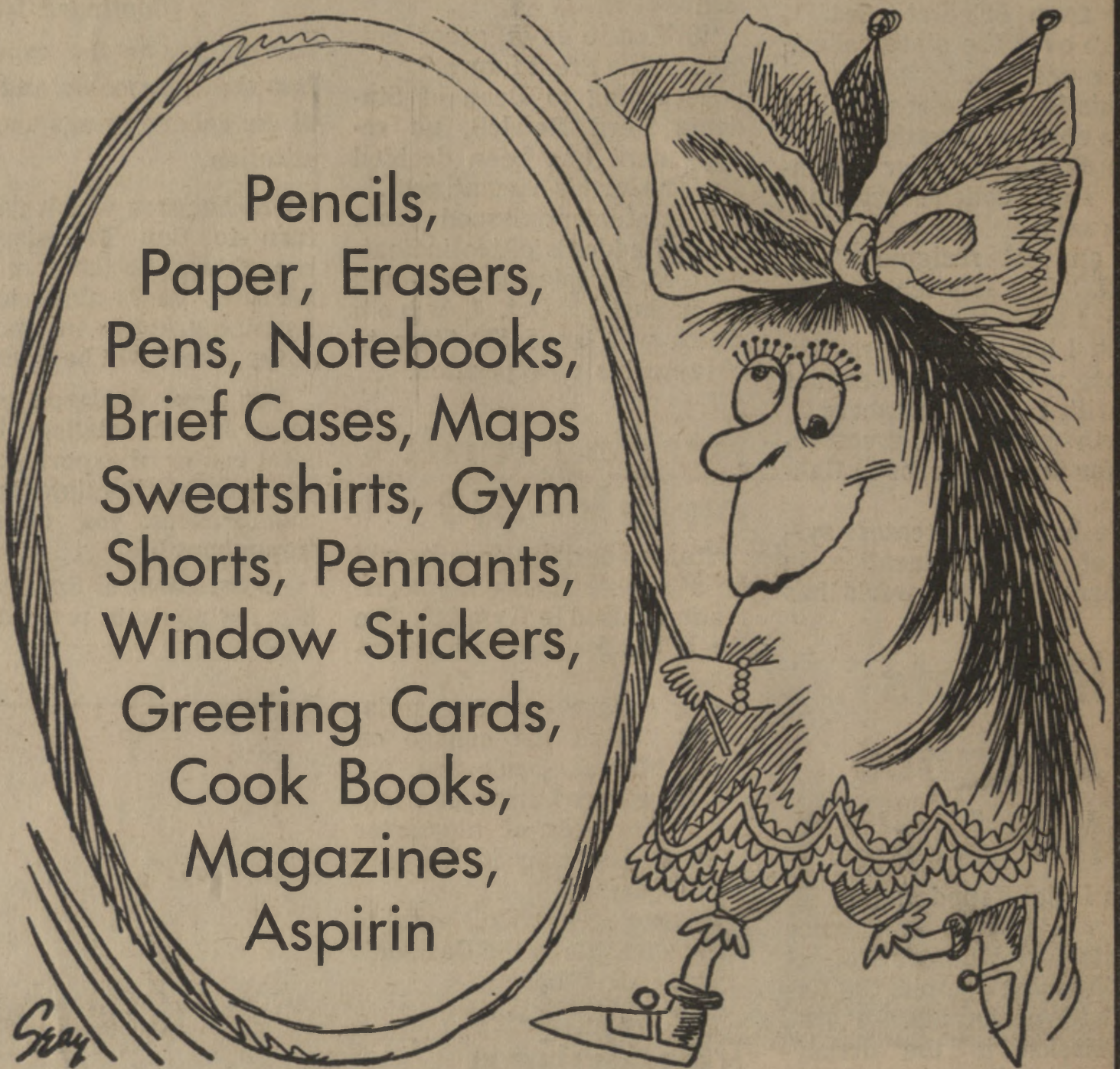
STOCK UP NOW

**If You Need it,
We've Got it!**

(Within Limits)



Pencils,
Paper, Erasers,
Pens, Notebooks,
Brief Cases, Maps
Sweatshirts, Gym
Shorts, Pennants,
Window Stickers,
Greeting Cards,
Cook Books,
Magazines,
Aspirin



**Required Text Books,
Paperbacks
& Book Covers**

Our Hours:

Registration Week:

Friday, 13th 8 to 8

Saturday, 14th 9 to 1

1st Week of Classes:

Monday Through Thursday

(16th through 19th 8 to 8

Friday, 20th 8 to 4

2nd Week of Classes:

Monday Through Thursday ... 8 to 7

Friday, 27th 8 to 4

Art
Supplies,
too!

all available at

THE BOOKSTORE

on campus