

Cal Poly's 9th Annual
Open House

PASSPORT

to Poly

19 APRIL 2002
Admitted Students'
Preview Day

20 APRIL 2002
Open To The Public
Poly Royal Parade

21 APRIL 2002
Open House
Golf Classic

San Luis Obispo



CAL POLY



student life &
leadership

Welcome to Cal Poly!

On behalf of the Open House Committee, we are proud to welcome you to Cal Poly's 9th Annual Open House. This year's theme, "Passport to Poly" encompasses aspects of the university's past, present and future. It is symbolic of the voyage alumni have taken, the shared adventures of current students, and the journey upon which admitted students are about to embark. Our three-day event is the culmination of an entire year of hard work and dedication by a volunteer student-run committee, student clubs, faculty and staff.

Whether you are a prospective student, parent, current student, alumnus, faculty, staff, or member of the community, this year's Open House has something for you. Traditional favorites include the Cal Poly Spring Rodeo, Design Village, and the Open House Golf Classic. The committee is also proud to present the return of the Poly Royal Parade whose reintroduction is an effort to bring back the memories of Poly Royal and will make for an exciting kick-off to Saturday's events.

Friday, Admitted Students' Preview Day, is focused on conditionally admitted students and their families. On this day, you will be introduced to Cal Poly's nationally recognized academic programs as well as our friendly faculty and staff. You can take full advantage of the opportunity to meet college deans, tour the campus and departments, and get acquainted with the many resources available to Cal Poly students. Don't forget to attend our annual Casino Night where you'll meet current and future students in a fun, informal atmosphere while playing casino games for a chance to win exciting prizes.

Saturday is a showcase of all Cal Poly has to offer and is open to the public. Many departments will remain open for tours of displays and exhibits. In addition, over 200 student clubs and organizations set up educational, informational and concession booths for you to visit. While exploring the campus, stop by Dexter Lawn to see a full program of student talent on the Open House Main Stage. Also on Dexter Lawn, visit the Alumni Tent to hear more about the other alumni events taking place throughout the weekend, or check out the alumni sections in this program. Our Carnival, now located near the Robert Kennedy Library, is great for kids of all ages featuring games like a dunk tank, fish toss and much more! So come feast on everything from tri-tip to cotton candy and experience the excitement of events such as the Tractor Pull and Robo Rodentia while enjoying all that Cal Poly has to offer.

On Sunday, Open House will host its 4th Annual Golf Classic at Blacklake Resort in Nipomo. Golfers will tee-off at 8:00am to try and win prizes including a hole-in-one prize worth \$5,000!

Above all else, we hope you enjoy exploring our campus and making Open House 2002 a stamp in *your* passport to Poly.

Carina Yamaguchi
Open House 2002 Co-Chair

Kristen N. Salinas
Open House 2002 Co-Chair



OPEN HOUSE 2002

COMMITTEE MEMBERS

Admitted Students' Preview Day

Kate Stover - Director
Tamera Thomas
Julie McHuron

Alumni Relations

Alexa Lawrence - Director
Ashlyn Fukagawa
Burnadette Gregorio

Club Relations

Lisa Tate - Director
Lustin Llata
Megan Walzberg

Facilities and Operations

Mike Hom - Director
Derek Brown

Finance

Becky Worthington- Director
Jackie Anderson
David Leach

Public Relations

Kat Corey - Director
Alex Thapar
Megan Munday
Juliana Wong

Special Events

Marion Gutierrez - Director
Kerensa Pearce
Matt Reichmuth

Transportation

Brett Tsudama- Director

Carina Yamaguchi - Co-Chair
Kristen Salinas- Co-Chair
Lisa Bruce - Advisor
Andrene Kaiwi-Lenting - Advisor

Cover Design: Allison Brohard, Graphic Communication Department

Allison Brohard is a graphic communication senior with a concentration in international consumer marketing and sales and a minor in psychology. She also works part-time as a marketing assistant in Arroyo Grande and will be the sales manager for University Graphic Systems for the 2002-2003 school year.

"Open House has always been a very active weekend for not only Cal Poly, but also the whole community, so when my work was chosen for the design of the poster I was ecstatic! I have a passion for design, which is why in my scarce free time, I do some freelance design work."

COMMITTEE MEMBERS

Chairman: [Name] Vice Chairman: [Name]

Secretary: [Name] Treasurer: [Name]

Public Relations: [Name]

Education: [Name]

Membership: [Name]

Finance: [Name]

Legal: [Name]

Medical: [Name]

Other: [Name]

[Name]

[Name]

[Name]

[Name]

[Name]

[Name]

[Name]

[Name]

[Name]

[Name]

TABLE OF CONTENTS

Open House Schedule at a Glance	2
---------------------------------------	---

FRIDAY SCHEDULE

Resource Fair	3
Campus Tours/Presentations/Sessions.	3
Departments Open for Visit	4
College Schedules	
College of Agriculture.	5
College of Architecture and Environmental Design	6
College of Business.	7
College of Engineering.	8
College of Liberal Arts.	9
College of Science and Math.	10
Special Events.	11

SATURDAY SCHEDULE

Campus Tours/Presentations/Sessions.	12
Departments Open for Visit.	12
College Schedules	
College of Agriculture.	14
College of Architecture and Environmental Design	15
College of Business.	16
College of Engineering.	16
College of Liberal Arts.	17
College of Science and Math.	17
University Center for Teacher Education.	18
Special Events.	19
Alumni Events.	22

SUNDAY SCHEDULE.

23

List of Participating Clubs.	24
Acknowledgements.	31
Open House Sponsors.	31

Open House Schedule *at a glance*

Friday

7:30am-noon	Admitted Students' Check-In for All Colleges	Performing Arts Center Plaza
8am	Design Village Opens	Poly Canyon
9am-4pm	Resource Fair	UU Plaza
9am-9:30am	University Welcome I College of Agriculture College of Engineering	Rec Center
10:30am-11am	University Welcome II College of Architecture & Environmental Design College of Business College of Liberal Arts College of Science and Mathematics	Rec Center
10am-4pm	Various College and Departmental Activities	Campuswide
7pm	Cal Poly Rodeo	Rodeo Arena
8pm-11pm	Admitted Students' Casino Night	Rec Center
8pm-10pm	Parents' Coffee House Hosted by the Parent Program & Team WOW	The Avenue (Dining Complex)

Saturday

9am	Poly Royal Parade	Begins at UU
10am	Open House Opening Ceremonies	Dexter Lawn
10:30am-4pm	Design Village Opens Concession Booths and Demos by Clubs Main Stage Events Open House Carnival Open House Information Booth	Poly Canyon Campuswide Dexter Lawn Perimeter Road (near Library) Dexter Lawn
4pm	Cal Poly Rodeo	Rodeo Arena
1pm	Cal Poly Tractor Pull	Field East of Crops Unit
1pm	RoboRodentia VIII	Bldg. 20A-Lobby

Sunday

8am	Open House Golf Classic (by reservation only)	Blacklake Golf Resort
12 noon	Cal Poly Rodeo	Rodeo Arena

STUDENT RESOURCES

Friday, April 19

RESOURCE FAIR IN UNIVERSITY UNION PLAZA

Academic Skills Center
ASI Rec Sports
Associated Students, Inc.
Campus Dining
Career Services
Commuter and Access Services
Disability Resource Center
Educational Opportunity Program
El Corral Bookstore
Extended Studies
Financial Aid

Health and Counseling Services
Interfaith Campus Council
Intercollegiate Athletics
International Education Programs
Jump-Start Program
Parent Program
Student Academic Services
Student Life and Leadership
Student Support Services
University Center for Teacher Education
University Police Department

CAMPUS TOURS

Poly Reps will lead campus tours every hour, on the hour, from the UU Plaza Stage. Tours run from 9am-2pm on Friday (last tour leaves at 2). See page 12 for Saturday tour times.

PRESENTATIONS/SESSIONS

event	time	location
HOUSING AND RESIDENTIAL LIFE PARENT INFO SESSION	Noon & 2pm	Sierra Madre Residence Hall (Bldg 113)
HOUSING AND RESIDENTIAL LIFE STUDENT INFO SESSION	Noon & 2pm	Yosemite Residence Hall (Bldg 114)
WOW PARENTS' PANEL	1pm & 3pm	UU, Room 220 An opportunity to come talk with a panel of students and parents who have "been there, done that" in an informal setting.
MULTICULTURAL CENTER CULTURAL CONNECTIONS RECEPTION	3pm-4:30pm	Multicultural Center - UU, 2nd Floor Reception sponsored by the Multicultural Center and the Connections for Academic Success Program. Meet students representing Cal Poly's cultural clubs and organizations as well as faculty and staff involved in cultural awareness activities.
HONORS PROGRAM RECEPTION	3:30pm-4:30pm	Kennedy Library Atrium
FINANCIAL AID FEDERAL WORK-STUDY "INFO" SESSION	3pm-3:30pm	UU, Room 216 Come find out about Cal Poly's Federal Work-Study program. Learn how you can connect with Cal Poly and the community through part-time employment.

Friday, April 19

STUDENT

RESOURCES

DEPARTMENTS OPEN FOR VISIT

department	open hours	location
ADMISSIONS OFFICE	8am-5pm	Bldg 01-Rm 206
ASI REC SPORTS	10:30am-3pm Guided tours available every half hour. Information booth also open from 8:30am-2pm.	Rec. Center
CAREER SERVICES	8am-4:30pm Career Services staff will be available at the Resource Fair to answer your career and/or job-related questions. A summary of services will be at the fair as well as in the office.	Bldg 124-Rm 114
DISABILITY RESOURCE CENTER	9am-4pm DRC advisors will be available to answer questions from prospective students and their families and provide information about departmental services.	Bldg 124-Rm 119
EL CORRAL BOOKSTORE	7:45am-5pm A full-service student store, offering textbooks, educationally priced computers and software, general reading and reference books, student supplies and Cal Poly clothing and gifts.	UU
EXTENDED STUDIES	8am-5pm	Bldg 116-Rm 101
FINANCIAL AID	8am-4pm	Bldg 01-Rm 212
HEALTH & COUNSELING SERVICES	9am-4pm Health Center staff will be available to answer your health care and other health-related questions. Tours of the Health Center are self-guided.	Bldg 27
HOUSING & RESIDENTIAL LIFE	10am-4pm Tours of the Residence Halls are self-guided. Flyers and maps are available at the Resource Fair and the "Housing Info Center" located in front of Santa Lucia Hall (Bldg. 106). The Housing Office will be closed Friday and Saturday and all housing staff will be located at the "Housing Info Center."	All Residence Halls
STUDENT ACADEMIC SERVICES		
ACADEMIC SKILLS CENTER	9am-3pm	33-290
EDUCATIONAL OPPORTUNITY PROG.	9am-3pm	Bldg. 81, Hillcrest
STUDENT SUPPORT SERVICES	9am-3pm	124-119
	Academic Advisors will be available on a drop-in basis to answer questions and provide information about department services.	
STUDENT LIFE & LEADERSHIP		
COMMUNITY CENTER	10am-3pm	UU 217
MULTICULTURAL CENTER	10am-3pm	UU 217
WOMEN'S CENTER	10am-3pm	UU 217
RETENTION & OUTREACH PROGRAM	9am-4pm	UU 217
UNIVERSITY POLICE DEPARTMENT	7am-5pm	Bldg 74

Friday, April 19

COLLEGE EVENTS

COLLEGE OF AGRICULTURE

	time	event	location (bldg.-rm)
ALL DEPARTMENTS	All Day	Information Booth	Via Carta and Perimeter
	7:30am-noon	Admitted Students' Check-In	Performing Arts Center Plaza
	9-9:30am	University Welcome	Rec Center
	10am	Student Welcome & Student Discussion	Mott Gym
	10am	Parent Welcome Program	Farm Shop
	11:45am-1pm	Admitted Ag Student BBQ	Farm Shop
AGRIBUSINESS	1pm	Presentation on Agricultural Business Major	Cal Poly Theatre
AGRICULTURE EDUCATION AND COMMUNICATION	1pm	Presentation on Agricultural Science Major	10-100, 241
ANIMAL SCIENCE	1pm	Presentation on Animal Science Major	Bldg. 16
BIORESOURCES AND AGRICULTURAL ENGINEERING	1pm	Presentation on BRAE and Agricultural Systems Management Majors	08-122
HORTICULTURE AND CROP SCIENCE/CROP, FRUIT AND PLANT PROTECTION MAJOR	1pm	Presentation on Crop Science, Fruit Science, and Plant Protection Science Majors	11-115, 118
DAIRY SCIENCE	1pm	Presentation on Dairy Science Major	18-2
EARTH AND SOIL SCIENCES	1pm	Presentation on Earth Sciences Major	52-A05, 52-A07
HORTICULTURE AND CROP SCIENCE/ ENVIRONMENTAL HORTICULTURAL SCIENCE MAJOR	1pm	Presentation on Environmental Horticulture Major	11-103
FOOD SCIENCE AND NUTRITION	1pm	Presentation on Food Science and Nutrition Majors	UU - Chumash Auditorium
MILITARY SCIENCE	1-5pm	Information Booth - Scholarship and Career Opportunities	Dexter Lawn
NATURAL RESOURCES MANAGEMENT/FORESTRY AND NATURAL RESOURCES MAJOR	1pm	Presentation on Forestry and Natural Resources Management Major	11-105, 302, 304
RECREATION ADMINISTRATION	1pm	Presentation on Recreation Administration Major	UU-220
EARTH AND SOIL SCIENCES	1pm	Presentation on Soil Science Major	52-A05, A07

Friday, April 19

COLLEGE EVENTS

COLLEGE OF ARCHITECTURE & ENVIRONMENTAL DESIGN

	time	event	location (bldg-rm)
ALL DEPARTMENTS	7:30am-noon	Admitted Students' Check-In	Performing Arts Center Plaza Rec Center
	10:30am-11am	University Welcome	
	All Day 2pm-4pm	Design Village Competition Design Village-Free Shuttle Service	Poly Canyon Poly Canyon
	11:15am-noon	CAED New Student Welcome Meeting (all majors)	Rec Center
	Noon-5pm	Robert Hifumi Odo Memorial Scholarship Display	5-212, Lobby
	Noon-5pm	CAED Exhibit of Student Work-All Departments	CAED +Gallery 05-105
	1pm-4pm	College Tours by Alpha Rho Chi	Bldg. 5, Lower Stair Court Madonna Inn
	5pm	CAED Class of '62 40-Year Reunion Informal Gathering (reservations not required)	
	7:00pm	Hearst Lecture Series: Craig Hodgetts and Ming Fung, Hodgetts + Fung, Architects	UU - Chumash Auditorium
	2pm-3pm 3pm	Meeting with New Students Transfer Student Portfolio Review	21-122A 05-204
ARCHITECTURAL ENGINEERING			
ARCHITECTURE	1:15pm-2pm 2pm	Meeting with New Students Transfer Student Portfolio Review	Bldg. 5-Stair Court 05-204
	1:30pm-4:30pm	Collaborative Interactive Design Studio "Open Classroom"	05-224, 207
CITY & REGIONAL PLANNING	1:15pm-1:45pm 1:45pm-2:15pm	Meeting with New Students Transfer Student Portfolio Review	34-249 34-249
CONSTRUCTION MANAGEMENT	1:15pm-1:45pm 2pm	Meeting with New Students Transfer Student Portfolio Review	21-121B 05-204
LANDSCAPE ARCHITECTURE	1:15pm-1:45pm	Meeting with New Students	34-213, Upper Lobby
	1:45pm-2:30pm	Tour of Studios	34-213, Upper Lobby
ALUMNI EVENT	5pm	Class of '62 - 40-Year Reunion	Madonna Inn

Friday, April 19

COLLEGE EVENTS

COLLEGE OF BUSINESS

time	event	location (bldg - rm)
7:30am-noon	Admitted Students' Check-In	Performing Arts Center Plaza
10:30am-11am	University Welcome	Rec Center
11:15am-noon	Orfalea College of Business Welcome	3-Acre Lawn
Noon-1:15pm	Admitted Students Lunch	3-Acre Lawn
1:30pm-1:55pm	Part I of Concentration & Degree Program Sessions Accounting Economics Industrial Technology International	03-213 03-111 03-112 03-114
2pm-2:25pm	Part II of Concentration & Degree Program Sessions Marketing Economics Industrial Technology Management/HRM International	03-213 03-111 03-112 03-113 03-114
2:25pm-3pm	Part III of Concentration & Degree Program Sessions Finance Marketing Management Information Systems Management/HRM International	03-213 03-111 03-112 03-113 03-114
3:25pm-4pm	Part IV of Concentration & Degree Program Sessions Management Information Systems Marketing International Management/HRM Accounting	03-213 03-111 03-112 03-113 03-114

Friday, April 19

COLLEGE EVENTS

COLLEGE OF ENGINEERING

	time	event	location (bldg - rm)
ALL DEPARTMENTS	7:30am-noon	Admitted Students' Check-In	Performing Arts Center Plaza
	9am-9:30am	University Welcome	Rec Center
	10am-11am	College Welcome	Performing Arts Center
AEROSPACE ENGINEERING	11:30am	Lunch with Department Faculty and Students	13-Courtyard
	12:30pm	Lab Tours	13-Courtyard
	3pm-4pm	Question/Answer Session	13-Courtyard
CIVIL & ENVIRONMENTAL ENGINEERING	11:30am-1pm	Welcome Luncheon & Information Session	Mott Gym
	1:15pm-4pm	Tours of Civil & Environmental Engineering Labs	Bldg. 13
COMPUTER ENGINEERING	11:30pm-1pm	Welcome/Lunch	PAC Pavilion
	1-3pm	Lab Tours	Meet in front of Bldg. 20
COMPUTER SCIENCE	11:30am-1pm	Welcome & Lunch	Vista Grande Cafe
	1pm-2 pm	Department Tours & Demos	Bldg 14
ELECTRICAL ENGINEERING	11:30am-1pm	Department Tours	Bldg. 20
	1-3pm	Welcome & Lunch	Mott Gym
GENERAL ENGINEERING	11:30am-1pm	Lunch & Welcome	Bldg. 13-lawn
INDUSTRIAL & MANUFACTUR- ING ENGINEERING	11:30am- 12:30pm	Welcome/Luncheon	26-103
	12:30-2:30pm	Department Tours & Info Sessions	Bldg 26 & 36
MATERIALS ENGINEERING	11:30am-noon	Welcome	UU220
	Noon	Lunch	Lawn near Bldg. 12
	1pm-3pm	Lab Tours & Panel Discussions	TBA
MECHANICAL ENGINEERING	11:30am-1pm	Lunch	Tent behind Bldg. 13
	1pm-4pm	Lab Tours	Bldg. 13
WOMEN'S ENGINEERING	4pm-5:30pm	Panel Discussion/Hor d'oeuvres Reception	07-Keck Lab

Friday, April 19

COLLEGE EVENTS

COLLEGE OF LIBERAL ARTS

	time	event	location (bldg-rm)
ALL DEPARTMENTS	7:30am-noon	Admitted Students' Check-In	Performing Arts Center Plaza
	8am-1pm	Visit CLA Classes	
	10:30am-11am	University Welcome	Rec Center
ART & DESIGN DEPARTMENT	9am-4pm	Student Exhibit	Bldg. 34, Gallery
JOURNALISM DEPARTMENT	11am-4 pm	Tours & Exhibits: Cal Poly TV (CPTV) demo, Mustang Daily, KCPR radio	Bldg. 26, 2nd Floor
COLLEGE OF LIBERAL ARTS	1pm-2:15 pm	College of Liberal Arts Welcome All majors-with Dean Hellenbrand, faculty and students; student musical performance	Performing Arts Center-Harman Hall
	2:30pm-4 pm	Department meetings/tours/exhibits for students and parents	
		Art & Design	34-170
		Child Development	10-221
		English	10-227
		Graphic Communication	26-209
		History	10-223
		Journalism	26-228
		Liberal Studies	35-287
		Modern Languages & Literatures	10-126
		Music	45-129
		Philosophy	47-37
		Political Science	33-286
		Psychology	10-220
		Social Science	33-286
		Speech Communication	47-33
		Theatre	Cal Poly Theatre
	2:30pm-4 pm	College Advising Center Open	47-25G
		College Advising- Wendy Spradlin	47-25G
		Liberal Studies Advising-Betty Sawyer	53-205
		Political Science, Social Science, Psychology Advising-Bonnie McKim	47-11C

COLLEGE EVENTS

COLLEGE OF SCIENCE & MATHEMATICS

	time	event	location (bldg-rm)
ALL DEPARTMENTS	7:30am-noon	Admitted Students' Check-In	Performing Arts PAC Plaza
	10:30am-11am	University Welcome	Rec Center
	11:15am	Box Lunch	UU - Chumash
	11:45am	College Opening Session	UU - Chumash
COLLEGE ADVISING CENTER	1pm-4pm	College Information Room Open	25-229
	9-11am, 1-3pm	Walk-In Advising	53-219
HEALTH PROFESSIONS OFFICE	9am-1pm	Walk-In Advising	53-219
	2pm-3:30pm	Health Profession Careers Presentation	33-287
BIOLOGICAL SCIENCES DEPARTMENT <i>(Biological Sciences, Ecology & Systematic Biology, Microbiology)</i>	8am-5pm	Welcome & Information Rooms	33-281, 273
	1pm-2pm	Tour of Department	33-285
CHEMISTRY, BIO-CHEMISTRY DEPARTMENT	1pm-4pm	Welcome Room/Drop In/Information Q & A	25-125D
	1pm-4pm	Student Research Poster Display	25-125 (Atrium)
	1pm-1:45pm	Biochemistry Majors Degree Program Session	52-D17
	1pm-1:45pm	Chemistry Majors Tour of Facilities	25-125 (Atrium)
	1:45pm-2:30pm	Chemistry Majors Degree Program Session	52-D17
	1:45pm-2:30pm	Biochemistry Majors Tour of Facilities	25-125 (Atrium)
	3pm-4pm	Ice Cream Social	Courtyard
KINESIOLOGY DEPARTMENT	1pm-2pm	Dept. Chair, Faculty, Student Club Reps	43/1-150
	2pm-2:30pm	Tour of Kinesiology Facilities	Bldg 43
	2:30pm-4pm	Things You Should know: Advice, Q & A	43/1-451
MATHEMATICS DEPARTMENT	1pm-5pm	Welcome & Information Room	25-208
	1pm-2pm	Department Chair, Faculty & Student Panel	PAC, Philips Hall
	9am-3pm	MAPE (Math Placement Exams) No preregistration required.	25-208
	9am-3pm	Exploring Algebra with Computers	38-131
PHYSICS DEPARTMENT <i>(Physics, Physical Sciences)</i>	2pm-5pm	Math Computer Lab Open to Visitors	38-135
	1pm-4pm	Welcome & Info Room	52-D2
	1pm-2pm	Department Tour	Bldg 52
	2pm-4pm	Drop-In Student Advising	52-D2
STATISTICS DEPARTMENT	8am-4pm	Info available at Physics Dept. Office	52-D37
	1pm-2pm	Faculty/Student Panel	UU, San Luis Lounge
	2pm-4pm	Welcome & Information Room	25-107F
	2pm-4pm	Tour of Department Facilities	25-107F
	2pm-4pm	Student Research and Poster Display	

SPECIAL EVENTS

	time	location
DESIGN VILLAGE STARTS CONSTRUCTION	8am	Poly Canyon
	<p>The theme for Design Village 2001 is "Upside Down." This event is a design competition which hosts students from West Coast campuses. It is an intensive three-day event in which students must carry the materials for their self-designed shelters up scenic Poly Canyon, build them and live in them for three days and two nights. This year's spectacle takes place from 8am Friday to 12pm Sunday. Campus visitors are invited to view the structures from 2-4pm Friday and 10am-4pm Saturday via a shuttle leaving from the base of Poly Canyon Road. Admission and shuttle service is free courtesy of the College of Architecture and Environmental Design.</p>	
CAL POLY RODEO	7pm	Rodeo Grounds
	<p>This year, the Cal Poly Rodeo is hosting its 62nd annual event. This has grown to be the largest regular season college rodeo in the US. There will be a calf dressing event where campus clubs compete to see who can dress a calf the fastest. Tickets are \$7 general admission, \$5 for students and seniors and children under five are free. Tickets can be purchased at the Athletics Ticket Office or at the Rodeo Grounds Ticket Office the day of the event</p>	
HEARST LECTURE SERIES--"RENEWAL"	7pm	UU, Chumash Auditorium
	<p>The College of Architecture and Environmental Design proudly presents Craig Hodgetts and Hsin-Ming Fung, principals and co-founders of Hodgetts + Fung Design Associates. Known for their work as architects, industrial designers, urban scenarists and scholars, Hodgetts and Fung will share their imaginative adaptation of architectural form to the challenges of cultural change, urban evolution and developing technology. This free lecture is made possible by a generous grant by the Hearst Foundation.</p>	
OPEN HOUSE/ASI ADMITTED STUDENTS' CASINO NIGHT	8pm- 11pm	Rec Center, Main Gym
	<p>All admitted students are invited to participate in the 5th annual Casino Night. It is held to provide a safe drug- and alcohol-free environment to allow admitted students to meet some of the Cal Poly population and soon-to-be classmates. Local bands will be providing entertainment. Open House will be providing drinks and snacks. Casino gambling tables will be available and chips can be redeemed for tickets, which provide the opportunity to win one of the great prizes!</p>	
PARENT PROGRAM & WOW PROGRAM PARENTS' COFFEE HOUSE EVENT	8pm-10pm	The Avenue (Dining Complex)
	<p>Come and enjoy coffee and deserts while your students try their luck at Casino Night. This coffee house event is a chance to mingle with other parents and ask questions of current Cal Poly students.</p>	
TRUE MUSTANG NIGHT	11:30pm	Outside (By Mustang Statue)
	<p>Want to become a True Mustang and take part in a new tradition? Participate in the first annual True Mustang ceremony and get kissed at the stroke of midnight to become a True Mustang. There will be live music, prizes, and food. Students, faculty, staff, and alumni are welcome!</p>	

STUDENT RESOURCES

CAMPUS TOURS

Poly Reps will lead campus tours every hour, on the hour, from Dexter Lawn. Tours run from 10am-1pm on Saturday.

PRESENTATIONS/SESSIONS

department	time	location
HOUSING AND RESIDENTIAL LIFE PARENT INFO SESSION	Noon & 2pm	Sierra Madre Residence Hall (Bldg 113)
HOUSING AND RESIDENTIAL LIFE STUDENT INFO SESSION	Noon & 2pm	Yosemite Residence Hall (Bldg 114)

DEPARTMENTS OPEN FOR VISIT

department	open hours	location
ADMISSIONS OFFICE	10am-2pm	Bldg 01-Rm 206
ASI REC SPORTS	8:30am-7:30pm Enjoy self-guided tours of the Rec Center.	Rec Center
EL CORRAL BOOKSTORE	9am-4pm A full-service student store offering textbooks, educationally priced computers and software, general reading and reference books, student supplies and Cal Poly clothing and gifts.	UU
HOUSING AND RESIDENTIAL LIFE	Noon-4pm Tours of the Residence Halls are self-guided. Flyers and maps are available at the "Housing Info Center" located in front of Santa Lucia Hall (Bldg. 106). The Housing Office will be closed Saturday and all Housing staff will be located at the "Housing Info Center."	Residence Halls
HEALTH & COUNSELING SERVICES	10am-4pm First aid and urgent medical care available.	Bldg. 27

Make the Grade with CellularOne

✓ Check out dorms

✓ Buy Cal poly
sweatshirts

✓ Visit CellularOne

CellularOne offers the best value in wireless service and makes it easy for families and friends to stay in touch. With more local cell sites than any other wireless provider and service that stretches across the nation, CellularOne has the coverage you can count on.



San Luis Obispo

733 Marsh (corner of Marsh & Garden)

Grover Beach

1800 D-Grand (corner of Grand & Oak Park)

Paso Robles

149 Niblick (Albertson's shopping center)

805-543-0100 • 800-549-4000 • www.cellularone-slo.com

CELLULARONE®

More Calls. More Places.



Rate plans and promotions vary from month to month. Applicable terms and conditions may be found by calling 800-549-4000 or on our website at www.cellularone-slo.com. Each new customer will also be asked to sign a customer service agreement detailing the general terms on which service is provided.

Saturday, April 20

COLLEGE EVENTS

COLLEGE OF AGRICULTURE

	time	event	location (bldg-rm)
COLLEGE OF AGRICULTURE	All Day	Information Booth	Via Carta and Perimeter
	All Day	Swanton Pacific Ranch Display	Next to Bldg. 11
	All Day	Shuttle between Campus Market and the Beef Unit, Horse Unit, and EHS Unit	Campus Market
AGRIBUSINESS	All Day	Display with emphasis on Agribusiness Finance/Appraisal, Marketing, Policy, and Farm and Ranch Management	10-206
	2pm	Marketing Team Demonstration	10-206
	2:30pm-4pm	Alumni/Prospective Student Reception	10-206
AGRICULTURAL EDUCATION AND COMMUNICATION	All Day	Display Featuring Historical Education and Communication	10-100
ANIMAL SCIENCE	All Day	Display Featuring New Technologies in Veterinary Medicine, Animal, Poultry Production and Biotechnology	10-102, 10-105
	10am	Equine Embryo Transfer	Equine Breeding Barn
	Noon-2pm	Intercollegiate Horse Show Association Jumping Clinic	Hadley Arena/ Horse Unit, Bldg. 32
	10am, noon, 2pm	Embryo Manipulation	11-106
	10am-2pm All Day	Comparative Animal Anatomy Lab Display featuring Irrigation Technology, Senior Projects, Survey Equipment, Preci- sion Agriculture, and Mechanical Systems	Bldg. 57 Behind Bldg. 8, North End
BIORESOURCE AND AGRICULTURAL ENGINEERING	All Day	Display Featuring Strategies to Minimize Pest Damage to Crops	11-115, 118
	9am-12noon	Dairy Tour	18-01
CROP SCIENCE	All Day	Community Flower Show	11-103
DAIRY SCIENCE	All Day	Educational Displays on a variety of Horticultural Topics	Bldg. 48
ENVIRONMENTAL HORTICULTURAL SCIENCE	All Day	Play Miniature Golf on Real Creeping Bentgrass Green	Behind EHS Unit
	All Day	Student Enterprise Project Sale	Poly Plant Shop
FOOD SCIENCE AND NUTRITION	10am-3pm	Pilot Plant Tours	Bldg. 24
MILITARY SCIENCE	All Day	Camouflage Face Painting	Dexter Lawn
	All Day	Humvee and Armored Vehicle Display	Dexter Lawn
NATURAL RESOURCES MANAGEMENT	All Day	GIS Lab Demonstration	11-304
EARTH AND SOIL SCIENCES	All Day	Display Featuring Morro Bay Watershed Project, Applied Research Projects, Student Projects, Peace Corps, Cal Trans Project	52-A05, A07, A12

COLLEGE

EVENTS

COLLEGE OF ARCHITECTURE & ENVIRONMENTAL DESIGN

	time	event	location (bldg-rm)
ALL DEPARTMENTS	10am-4pm	CAED Open House & Alumni Welcome	05-212, Lobby
	10am-5pm	Robert Hifumi Odo Memorial Scholarship Display	05-212, Lobby
	10am-4pm	Walk-In Advising, CAED Advising Center	05-212, 221
	10am-4pm	College Tours by Alpha Rho Chi	Bldg. 05, Lower Stair Court
	10am-5pm	CAED Exhibit of Student Work - All Depts.	CAED Gallery 05-105
	10am-5pm	CAED Class of '62 Alumni Exhibit	CAED Gallery 05-105
	All Day	High School Summer Workshop Exhibit	05-212, Lobby
	All Day	Design Village Competition	Poly Canyon
	10am-4pm	Design Village - Free Shuttle Service	Poly Canyon Gate
	10am - noon	Design Village Judging of Structures (Awards ceremony, Sunday @ 11am)	Poly Canyon
	11am-noon	Dean's Reception for CAED Class of '62	05-212, 214
ARCHITECTURAL ENGINEERING	6pm-midnight	CAED Class of '62 40-Year Reunion Dinner	Madonna Inn (reservations required)
	11am, 1 & 3pm	Department Tours	21-110A
	11:30am, 1:30 & 3:30pm	Material Testing Demonstrations	21-18, 16, Concrete Yard
ARCHITECTURE	Noon-2pm	ARCE Annual Alumni Luncheon	Bldg. 21, Courtyard
	All Day	ARCE Labs-Student Work Exhibits	21-122 B, C, D, E
	10am-2pm	First Year Design & Drawing Program Presentation Integrating Traditional & Digital Media	05-203
CITY & REGIONAL PLANNING	All Day	Student Work Exhibits	05 & 21
	All Day	Sustainable Environments Exhibit	34-2nd Floor Hallway
	11:30am & 1:30pm	Noise Workshop & Demo	34-134
CONSTRUCTION MANAGEMENT	2pm-3pm	Alumni Reception	34-2nd Floor Lobby
	All Day	Student Work Display	34-near 251
	All Day	Student Resource Center Exhibit	34-167
LANDSCAPE ARCHITECTURE	10am-5pm	Educational Displays/Exhibits	21-121C
	10am-5pm	Heavy Equipment Display	Kennedy Library
	All Day	Student Exhibit	34-210, South Patio

Saturday, April 20

COLLEGE

EVENTS

COLLEGE OF BUSINESS

time	event	location (bldg-rm)
10am-12:30pm	Information Tables for Advising Center and Academic Areas	Business Breezeway
10am-12pm	Industrial Technology Department Open Lab	21-132, 133, 134, 135
1pm-2:30pm	Spring Advising Program-Advisors & Peer Advisors provide advice for summer quarter registering students	3-113

COLLEGE OF ENGINEERING

	time	event	location (bldg-rm)
COLLEGE OF ENGINEERING	11am-12:30pm	Alumni Recognition Luncheon	Chumash Aud.
AEROSPACE ENGINEERING	10am-3pm	Flight Simulator Demonstration PolySat Display, AIAA Design Build Fly Team & Cal Poly Space Systems Club, Rocket Displays	Bldg. 007
CIVIL AND ENVIRONMENTAL ENGINEERING	10am-noon 10am-4pm	Hospitality Room Match Stick Bridge Contest	13-118 13-120
COMPUTER ENGINEERING	1pm-4pm	RoboRodentia VIII	20-Lobby
COMPUTER SCIENCE	10:30am-noon 1pm-2:30pm	Hospitality Room Alumni Reception	14-256 14-256
ELECTRICAL ENGINEERING	10am-4pm 10am-4pm	Hospitality Room Open Labs/Demos	20-111 Bldg. 20



COLLEGE

EVENTS

Saturday, April 20

COLLEGE OF LIBERAL ARTS

	time	event	location (bldg-rm)
	9am-4pm	Student Booths & Exhibits	Dexter Lawn
	10am-11:30am	"Where Do We Go From Here?" Speakers panel on careers for Liberal Arts majors	Performing Arts Center - Rm 124
ART & DESIGN DEPARTMENT	9am-4pm	Student Exhibit	Bldg. 34-Gallery
GRAPHIC COMMUNICATION DEPARTMENT	9am-4pm	Tours & Exhibits: Electronic Imaging, Internet Publishing & Web Authoring, Digital & Traditional Printing, Screen Printing, Shakespeare Press Museum	26-209
JOURNALISM DEPARTMENT	9am-4pm	Tours & Exhibits: Cal Poly TV (CPTV) Demo, Mustang Daily, KCPR Radio	26-2nd Floor
MUSIC DEPARTMENT	9am-4pm	New Sound Media, Recording Studio Exhibit, 30-minute presentation, begins every 1/2 hour.	45-125, 126
ENGLISH DEPARTMENT	7pm-9pm	Annual Creative Writing Awards- <i>Byzantium</i> (includes readings by students) and Alumni Reunion	19-Sandwich Plant
MUSIC DEPARTMENT	8pm	Cal Poly Open House Concert Featuring Cal Poly Chamber Orchestra, Choirs & Wind Orchestra - Tickets \$7-27, available at PAC ticket office, open 10am-6pm	PAC-Harman Hall

COLLEGE OF SCIENCE AND MATHEMATICS

	time	event	location (bldg-rm)
ALL DEPARTMENTS	10am-4pm	College Information Room	25-229
COLLEGE ADVISING CENTER	10am-noon, 1:30pm-3pm	Walk-In Advising	53-219
HEALTH PROFESSIONS OFFICE	10-12, 1:30-3pm	Walk-In Advising	53-219
BIOLOGICAL SCIENCES DEPARTMENT (Biological Sciences, Ecology & Systematic Biology, Microbiology)	10am-4pm 10am-4pm 11am-12pm, 1-2pm 10:30am-2:30pm 10:30am-2:30pm	Hospitality/Alumni Room Student Research Poster Display Department Tours Ocean Adventure Monarch Butterfly Biology	33-285 33-Lobby 33-Lobby 33-287 53-289
CHEMISTRY, BIO-CHEMISTRY DEPARTMENT	10am-4pm	Student Research Poster Display	25-125 (Atrium)

Saturday, April 20

COLLEGE EVENTS

COLLEGE OF SCIENCE & MATH CONT.

	time	event	location (bldg-rm)
CHEMISTRY CONT.	11am-noon	Welcome Room/Info/Alumni/Drop In Q & A	25-125D
	1pm & 3pm	Chemistry Magic Show	52-B5
	10am-2:30pm	Student Exhibits	52-B1
	10am-2:30pm	Glass Blowing Exhibit (Demo by Students)	52-B4
KINESIOLOGY DEPARTMENT	10am-2:30pm	Polymers & Coatings Lab	52-B7
			12-125, Atrium
MATHEMATICS DEPARTMENT	10am-4pm	Blood Pressure, Grip Strength, and Skinfolds	25-208
	10am-2pm	Hospitality Room	38-135
	11am-3pm	Math Computer Lab Open to Visitors	38-204
	10am-4pm	Math Exhibits and Puzzles	25-208
	11am	MAPE offered (no preregistration required)	PAC-Phillips Hall 124
PHYSICS DEPARTMENT (Physics, Physical Science)	2pm-3:30pm	Quiz Bowl, Cal Poly Math Contest	52-D2
	10am-2pm	Hospitality Room/Student Advising/Q & A	52-E Wing
STATISTICS DEPARTMENT	10am-2pm	Society of Physics Students-demos & mini talks	
	10am-4pm	Please see Dean's Office	25-229

UNIVERSITY CENTER FOR TEACHER EDUCATION

	time	event	location (bldg-rm)
UNIVERSITY CENTER FOR TEACHER EDUCATION	9am-noon	Faculty advisors and students will be available to answer questions about elementary, secondary, special education, advanced credential pro- grams, and the Cal State TEACH Intern program.	Bldg. 2, Foyer Steps



*Cal Poly...
Celebrating 100 Years!*

SPECIAL

EVENTS

LAMDA CABANA WOMEN'S VOLLEYBALL TOURNAMENT

time
9am-8pm

location
Rec Center Outdoor Volleyball Courts

Lamda Chi Alpha will present its philanthropic volleyball tournament featuring six sororities competing to be Lamda Cabana champs. Come check out our intense sports and get a taste for Greek life.

POLY ROYAL PARADE

9am

Begins in front of University Union

The Poly Royal Parade is back for Open House Weekend! Various campus clubs and organizations, as well as community members will be participating. The route will be along Perimeter Road on the Cal Poly campus and will end around Kennedy Library to kick off Opening Ceremonies at Dexter Lawn.

MAIN STAGE

10am-4pm

Dexter Lawn

Main Stage is a place where campus clubs and organizations can showcase their talents. This year's acts range from dancers to music and demonstrations. The festivities kick-off with Opening Ceremonies and end with the presentation of Booth Judging awards. The schedule will be posted around campus so stop by and check out some of Cal Poly's talent.

OPEN HOUSE CARNIVAL

10am-4pm

Perimeter Road-Near Library

The carnival is a special section of booths set aside for interactive activities. Kids of all ages are welcome to participate in all sorts of games ranging from dunk tanks to win-a-fish games. There will be various types of carnival food such as popcorn, cotton candy, and other snacks.

DESIGN VILLAGE COMPETITION

10am-4pm

Poly Canyon

The theme for Design Village 2001 is "Upside Down." This event is a design competition which hosts students from West Coast campuses. It is an intensive three-day event in which students must carry the materials for their self-designed shelters up scenic Poly Canyon, build them and live in them for three days and two nights. (See page 11 for more details)

RODEO

4pm

Rodeo Arena

This year, the Cal Poly Rodeo is hosting its 62nd annual event. This has grown to be the largest regular season college rodeo in the U.S. There will be a calf dressing event where campus clubs compete to see who can dress a calf fastest. Tickets are \$7 general admission, \$5 for students and seniors and children under five are free. Tickets can be purchased at the Athletics Ticket Office or at the Rodeo Grounds Ticket Office the day of the event.

ROBORODENTIA VIII

1pm

Bldg. 20A EE Office Bldg, Lobby

The Cal Poly Institute of Electrical and Electronic Engineers Computer Society (IEEE-CS) and the Computer Engineering Program present this annual event where robots created by multidisciplinary student and community teams compete to find and retrieve racquetballs in a large maze. See the Saturday April 20 schedule for further details. Admission is free.

AGRICULTURAL ENGINEERING SOCIETY-- TRUCK/TRACTOR PULL

1pm

Accross from Crops Unit

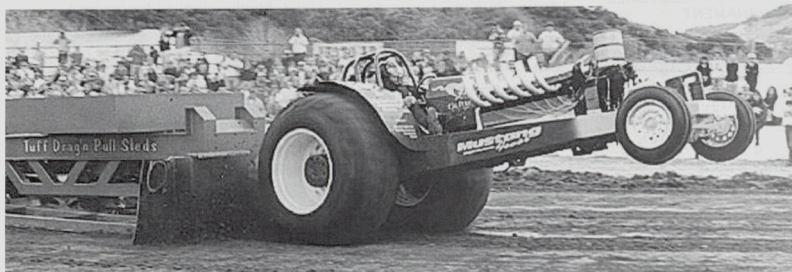
Cal Poly was home to the first West Coast tractor pull at Poly Royal in 1971 and has continues the tradition. The sport puts modified farm tractors and pick-ups against a weight transfer sled. Each puller is placed in a weight class. The object is to pull the sled farther than anyone else in that weight class. Tickets at the gate only: adults \$7 and children under ten \$3.

Saturday, April 20

SPECIAL

EVENTS

2002 Open House Truck and Tractor Pull



1:00 p.m., Saturday, April 20

Field across from Crops Unit

Adults: \$7, Children under ten: \$3

Presented by the Ag Engineering Society

2002 Cal Poly Rodeo



Friday, April 19

7 pm

Saturday, April 20

4 pm

Sunday, April 21

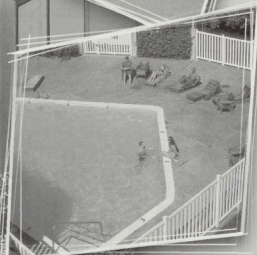
noon

Location: Rodeo Arena, Mt. Bishop Rd.

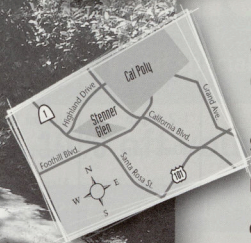
Tickets are \$7 general admission, \$5 for students and seniors, and children under five are free. Tickets available at the gate and Cal Poly Athletics Ticket Office.

Stenner Glen

STUDENT LIVING AT ITS FINEST



- Cafeteria
- Menu Choices
- Fitness Center
- Swimming Pool
- Tutoring
- Study Hall
- Computer Lab
- Resident Assistants
- Uniformed Security
- Planned Activities
- Utilities Paid
- Direct TV
- High Speed Internet
- Quiet Buildings
- Laundry Rooms
- Recreation Center
- Large Screen TV



Virtual Tours of Suites Available
at www.stennerglen.com

1050 Foothill Boulevard
San Luis Obispo, CA 93405

Leasing Office: (800) 734-1744

email: stennerglen@stennerglen.com
web: www.stennerglen.com

ALUMNI EVENTS

	time	event	location
CAL POLY ALUMNI ASSOCIATION	8-10am	Alumni Association Member Breakfast (Invitation Only)	Dexter Lawn
	10am-5pm	Alumni Association Booth	Dexter Lawn
SPORTS	12 Noon	Golf Alumni Day	Avila Beach Golf Resort
ATHLETICS	6pm	"100 Years of Excellence" - Reunion of Cal Poly Athletics Hall of Fame Members	Embassy Suites

COLLEGE OF AGRICULTURE

AGRIBUSINESS	2:30-4pm	Alumni/Prospective Student Reception	10-206
CAL POLY RODEO	8:30am	Alumni Team Roping	Rodeo Arena

COLLEGE OF ARCHITECTURE AND ENVIRONMENTAL DESIGN

COLLEGE OF ARCHITECTURE AND ENVIRONMENTAL DESIGN	10am-4pm	CAED Open House and Alumni Welcome	05-212
ARCHITECTURAL ENGINEERING	Noon-2pm	Annual Alumni Luncheon	Bldg. 21, Courtyard
CITY & REGIONAL PLANNING	2pm-3pm	CRP Alumni Reception	Bldg. 34, 2nd Floor
CLASS OF 1962	10am-5pm	Class of '62 Alumni Exhibit	05-105
	11am-noon	Class of '62 Alumni Reception	05-212/214
	6pm-midnight	Reunion Banquet-Social Hour, Dinner, Dance	Madonna Inn

COLLEGE OF ENGINEERING

COLLEGE OF ENGINEERING	11am-12:30pm	Alumni Recognition Luncheon	UU Chumash
AEROSPACE ENGINEERING	10am-3pm	Flight Simulator Demonstration PolySat Display, AIAA Design Build Flight Team Aircraft, Cal Poly Space Systems Club Rocket Displays	Bldg. 7
CIVIL AND ENVIRONMENTAL ENGINEERING	10am-noon	Hospitality Room	13-118
COMPUTER ENGINEERING	1pm-4pm	Robo Rodentia VIII	20, Lobby
COMPUTER SCIENCE	1-2:30pm	Alumni Reception	14-256
ELECTRICAL ENGINEERING	10am-4pm	Hospitality Room	20-111
MATERIAL ENGINEERING	12:30pm-2pm	Alumni Reception	21-010
MECHANICAL ENGINEERING	4-6pm	Alumni BBQ	Tent behind Bldg. 13

COLLEGE

EVENTS

Sunday, April 21

*All-State
Wind Orchestra Festival Concert*

As part of Open House activities, Cal Poly's Music Department is proud to announce its sponsorship of a statewide Wind Orchestra festival featuring California's most talented young musicians.
Conducted by: Baldor Bronnimann

Location: Performing Arts Center, Harman Hall
Date/Time: Sunday, April 21 at 2:30pm

Tickets are \$7-\$17 and are available at the PAC ticket office open 10am-6pm.

J. CARROLL

screen printing • embroidery • ad specialties

Bring this ad in and get 10% off your next order.

805 595 1000

www.jcarroll.com

800 377 3586

PARTICIPATING CLUBS

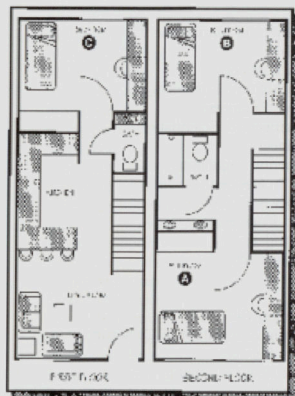
Ag Communicators of Tomorrow
 Ag-Engineering Society
 Agribusiness Management Club
 Agricultural Student Council
 AIAA
 AIESEC
 Air Conditioning Club (ASHRAE)
 Alpha Chi Sigma
 Alpha Gamma Omega
 Alpha Gamma Rho
 Alpha Kappa Delta Phi
 Alpha Kappa Psi (BUS Fraternity)
 Alpha Omicron Pi
 Alpha Phi
 Alpha Phi Omega
 Alpha Pi Sigma
 Alpha Psi Omega
 Alpha Rho Chi
 Alpha Sigma Mu
 Alpha Zeta
 American Chemical Society
 American Foundry Society
 American Institute of Architecture Students
 American Marketing Association
 American Society of Mechanical Engineers
 Asian American Christian Fellowship
 Associated Students in Planning
 Associated Students Inc.
 Associated Students of Construction Management
 Audio Engineering Society
 Badminton Team
 Baptist Student Union
 Beta Theta Pi
 Black Commencement Committee
 Block and Bridle Club
 Cal Poly Accounting Club
 Cal Poly Amateur Radio Club
 Cal Poly Ballroom Dance Club
 Cal Poly Billiards Club
 Cal Poly Cheer/Stunt
 Cal Poly College Republicans
 Cal Poly Cutting & Reining
 Cal Poly Equestrian Team
 Cal Poly Greeks
 Cal Poly Historical Society
 Cal Poly Jugglers Society
 Cal Poly Logging Team
 Cal Poly Packaging Association
 Cal Poly Packing Club
 Cal Poly Polo Club
 Cal Poly Rodeo Team
 Cal Poly Rose Float
 Cal Poly Rugby Football Club
 Cal Poly Sailing Club
 Cal Poly Sailing Team
 Cal Poly Salsa Dance Club
 Cal Poly Scuba Club
 Cal Poly Ski Club
 Cal Poly Space Systems
 Cal Poly Triathlon Team
 Cal Poly Ultimate Frisbee
 Cal Poly Waterski Team
 Cal Poly Wheelmen
 Cal Poly Women's Water Polo
 Cal Poly Young Democrats
 Campus Crusade for Christ
 Capoeira Mandinga
 Centennial Fountain Committee
 Chi Delta Theta
 Child Development Association
 Chinese Christian Fellowship
 Chinese Cultural Club
 Chinese Student Association
 Christian Science Organization
 College of Architecture and Environmental Design
 Student Council
 College of Science and Math Ambassadors
 College of Science and Math Student Council
 Collegiate FFA
 Collegiate Sport Club Program
 Construction Specifications Institute
 Crops Club
 Delta Chi
 Delta Sigma Phi
 Delta Sigma Pi
 Delta Upsilon
 Design Village
 Economics Association
 Electric Vehicle Engineering Club
 Engineering Student Council
 Environmental Horticultural Science Club
 Fencing Club
 Field Hockey
 Film Club - SLO Motion
 Financial Management Association
 Food Science Club
 Future Truck Club
 Gamma Phi Beta
 Gays Lesbians & Bisexuals United
 Global Student Ministry
 God's Laughter
 Golden Key National Honor Society
 Golf Club

PARTICIPATING CLUBS

Hillel
 Honors Program Club
 Human Resource Management Association
 IEEE-Computer Society
 Imagen Y Espiritu Ballet Folklorico de Cal Poly
 Indian Student Association
 Industrial Engineering
 Industrial Technology Society
 Information Systems Association
 Institute of Industrial Engineers
 Interfraternity Council (IFC)
 Kappa Alpha Theta
 Kappa Chi
 Kappa Sigma
 KCPR-Cal Poly Radio
 Lambda Chi Alpha
 Lambda Phi Epsilon
 Lambda Theta Phi
 Latinos In Agriculture
 Liberal Arts Student Council
 Los Lecheros Dairy Club
 Lutheran Student Movement
 M.E.Ch.A.
 Mat Pica Pi
 Materials Engineering Student Societies
 Math Club
 MBA Association
 Men's Water Polo Club
 Military Science Activities & Advisory Board
 Minna No Anime
 Muslim Student Association
 Mustang Band
 National Association of Homebuilders
 Nat'l Society of Collegiate Scholars
 Navigators
 Newman Catholic Center
 Nu Alpha Kappa
 Nutrition Club
 Omega Rho
 One Truth - On Campus
 Orchesis
 Panhellenic
 Phi Beta Sigma
 Phi Sigma Kappa
 Pilipino Cultural Exchange
 Poly Christian Fellowship
 Poly Goats 4WD Club
 Poly Ink
 Poly Pack
 Poly Voice
 PolyCon
 Poultry Club
 Power Engineering Society
 Progressive Student Alliance
 Psi Chi
 PUNCH
 Recreation Administration Majors
 Roller Hockey Club
 Running Thunder
 Sigma Alpha
 Sigma Alpha Epsilon
 Sigma Gamma Tau
 Sigma Kappa
 Sigma Omega Nu
 Sigma Phi Epsilon
 Society for Advancement of Management
 Social Sciences Club
 Society of American Foresters
 Society of American Military Engineers
 Society of Automotive Engineers
 Society of Black Engineers & Scientists
 Society of Civil Engineers
 Society of Environmental Engineers
 Society of Hispanic Professional Engineers
 Society of Microbiology & Biotechnology
 Society of Petroleum Engineers
 Society of Physics Students
 Society of Women Engineers
 Soil Sciences Club
 Solar Car Club
 Speech Communication Club
 Structural Engineering Association of California
 Student Community Services
 Studies in the Old & New Testament
 Swanton Pacific Ranch
 Tau Beta Pi
 Tau Kappa Epsilon
 Theta Chi Fraternity
 Tomodachi Kai
 Tractor Pull Club
 University Christain Community
 United Socialists and Anarchists
 University Christian Community
 Veterinary Science Club
 Vietnamese Students Association
 Vines to Wines
 Volleyball
 Waterski Club
 Week of Welcome (WOW)
 Womens Field Hockey Club
 Women's Programs/Women's Center
 Xicano Commencement
 Zeta Chi Epsilon

Valencia

555 Ramona Drive, San Luis Obispo CA 93405
(805)543-1450 www.valenciaapartments.com



FLOOR PLAN

**The Most Complete
Student Housing Complex in Town!**
Valencia is a 160-unit Spanish-style apartment community located just minutes from Cal Poly. We offer private rooms in 3-bedroom, 1 1/2 bath townhomes. Take advantage of our conveniently located bus stop, and forget the hassles of parking on campus. A complete shopping center with a major grocery store and other shops is conveniently located less than one block away. Valencia offers *the best value in student housing* with our GPA "Good Grade" discounts.

Amenities

- *3-Bedroom Townhomes
- *Private Bedrooms
- *Recreation Center
- *Nautilus Weight Room
- *Computer Lab with free internet access
- *Heated Pool
- *TV Lounge
- *Billards & Ping Pong
- *24 Hour Staff
- *Reserved Parking (\$)
- *Free General Parking
- *Private Phone Lines

Tours Available...

Monday - Friday 8am to 5pm
Saturday 10am - 2pm



• HEARST CASTLE • EXPERIENCE

It's more than just an
hour-and-a-half tour.
It's a full day adventure.

- *Five different tours*
- *Five-story-tall movies*
- *Museum and gift shops*

Reservations: (800) 444-4445 • Showtimes: (805) 927-6811
www.ngtheater.com



Lamplighter Inn and Suites

S a n L u i s O b i s p o , C A

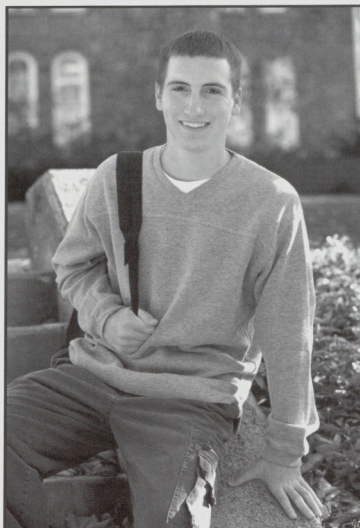
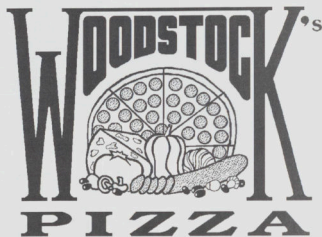


RRM DESIGN GROUP

Creating Environments People Enjoy



**ROOMMATE
REFERRALS**



You can join the Credit Union Of Choice — The Golden 1 Credit Union

If you live or work in San Luis Obispo County you're eligible to join the credit union of choice, The Golden 1. Just ask anyone — which credit union do you think of first? The majority answer, The Golden 1.

Join today by visiting The Golden 1 San Luis Obispo Office at 852 Foothill Boulevard, or by calling our Member Service Call Center at 1-877-GOLDEN 1.

The Golden 1 is proud to serve the faculty, staff and students of Cal Poly, San Luis Obispo.



Federally Insured by NCUA



California's Leading Credit Union™
golden1.com

NOTES

1. Introduction

The purpose of this report is to provide a comprehensive overview of the current state of research in the field of artificial intelligence (AI).

This report is organized into several sections, each focusing on a different aspect of AI research.

The first section discusses the history and evolution of AI, from its early beginnings to the present day.

The second section explores the various applications of AI, including healthcare, finance, and education.

The third section examines the ethical implications of AI, particularly in the context of privacy and security.

The fourth section discusses the future of AI, including potential challenges and opportunities.

The fifth section provides a conclusion and summary of the key findings of the report.

The sixth section contains a list of references and a bibliography.

The seventh section includes a glossary of key terms and definitions.

The eighth section provides a detailed analysis of the data collected during the research process.

The ninth section discusses the limitations of the study and the need for further research.

The tenth section contains a list of appendices and supplementary materials.

The eleventh section provides a detailed description of the research methodology used in the study.

The twelfth section discusses the results of the study and the implications for the field of AI.

The thirteenth section contains a list of figures and tables used in the report.

The fourteenth section provides a detailed analysis of the data collected during the research process.

The fifteenth section discusses the limitations of the study and the need for further research.

The sixteenth section contains a list of appendices and supplementary materials.

The seventeenth section provides a detailed description of the research methodology used in the study.

The eighteenth section discusses the results of the study and the implications for the field of AI.

The nineteenth section contains a list of figures and tables used in the report.

The twentieth section provides a detailed analysis of the data collected during the research process.

The twenty-first section discusses the limitations of the study and the need for further research.

The twenty-second section contains a list of appendices and supplementary materials.

The twenty-third section provides a detailed description of the research methodology used in the study.

The twenty-fourth section discusses the results of the study and the implications for the field of AI.

The twenty-fifth section contains a list of figures and tables used in the report.

The twenty-sixth section provides a detailed analysis of the data collected during the research process.

The twenty-seventh section discusses the limitations of the study and the need for further research.

The twenty-eighth section contains a list of appendices and supplementary materials.

The twenty-ninth section provides a detailed description of the research methodology used in the study.

The thirtieth section discusses the results of the study and the implications for the field of AI.

2. History of AI

The history of artificial intelligence (AI) can be traced back to the early 20th century, when scientists first began to explore the possibility of creating machines that could think and learn like humans.

In the 1940s, the first AI programs were developed, and the field of AI began to take shape.

Over the years, AI has made significant progress, and its applications have expanded to include a wide range of fields, from healthcare to finance.

Today, AI is one of the most rapidly growing and transformative technologies in the world.

The history of AI is a testament to the power of human ingenuity and the potential of technology to solve complex problems.

The history of AI is a testament to the power of human ingenuity and the potential of technology to solve complex problems.

The history of AI is a testament to the power of human ingenuity and the potential of technology to solve complex problems.

The history of AI is a testament to the power of human ingenuity and the potential of technology to solve complex problems.

The history of AI is a testament to the power of human ingenuity and the potential of technology to solve complex problems.

The history of AI is a testament to the power of human ingenuity and the potential of technology to solve complex problems.

The history of AI is a testament to the power of human ingenuity and the potential of technology to solve complex problems.

The history of AI is a testament to the power of human ingenuity and the potential of technology to solve complex problems.

The history of AI is a testament to the power of human ingenuity and the potential of technology to solve complex problems.

The history of AI is a testament to the power of human ingenuity and the potential of technology to solve complex problems.

The history of AI is a testament to the power of human ingenuity and the potential of technology to solve complex problems.

The history of AI is a testament to the power of human ingenuity and the potential of technology to solve complex problems.

The history of AI is a testament to the power of human ingenuity and the potential of technology to solve complex problems.

The history of AI is a testament to the power of human ingenuity and the potential of technology to solve complex problems.

The history of AI is a testament to the power of human ingenuity and the potential of technology to solve complex problems.

The history of AI is a testament to the power of human ingenuity and the potential of technology to solve complex problems.

The history of AI is a testament to the power of human ingenuity and the potential of technology to solve complex problems.

The history of AI is a testament to the power of human ingenuity and the potential of technology to solve complex problems.

The history of AI is a testament to the power of human ingenuity and the potential of technology to solve complex problems.

The history of AI is a testament to the power of human ingenuity and the potential of technology to solve complex problems.

The history of AI is a testament to the power of human ingenuity and the potential of technology to solve complex problems.

The history of AI is a testament to the power of human ingenuity and the potential of technology to solve complex problems.

The history of AI is a testament to the power of human ingenuity and the potential of technology to solve complex problems.

The history of AI is a testament to the power of human ingenuity and the potential of technology to solve complex problems.

The history of AI is a testament to the power of human ingenuity and the potential of technology to solve complex problems.

The history of AI is a testament to the power of human ingenuity and the potential of technology to solve complex problems.

The history of AI is a testament to the power of human ingenuity and the potential of technology to solve complex problems.

The history of AI is a testament to the power of human ingenuity and the potential of technology to solve complex problems.

The history of AI is a testament to the power of human ingenuity and the potential of technology to solve complex problems.

The history of AI is a testament to the power of human ingenuity and the potential of technology to solve complex problems.

The history of AI is a testament to the power of human ingenuity and the potential of technology to solve complex problems.

The history of AI is a testament to the power of human ingenuity and the potential of technology to solve complex problems.

The history of AI is a testament to the power of human ingenuity and the potential of technology to solve complex problems.

The history of AI is a testament to the power of human ingenuity and the potential of technology to solve complex problems.

The history of AI is a testament to the power of human ingenuity and the potential of technology to solve complex problems.

NOTES

Thank You!

The 2002 Open House Committee would like to thank:

Ag Ambassadors
Alan Cushman
Albert Nunez Jr.
Allison Brohard
Angela Schuck
Anup Somayaji
ASI Building Services
Barbara Broersma
Ben Johnson
Blacklake Golf Course
Bob Wilson
Brian Lawler
Cal Poly Admissions
Cal Poly Athletics
Cal Poly Parent's Program
Campus Dining and Catering
Carol Barnes
Carol Montgomery
Carolyn Jones
Catherine Deyerle
Cheryl Andrus
Cindee Bennett-Thompson
Cindi Jenkins
Darci Brown
Dave Ragsdale
Dave Smiley
Deby Anderson
Dianne Novo
Doghouse Promotions
Donna Aiken

Donna Amos
Donna Davis
Doug Overman
Dr. David Wehner
Dr. Paul Zingg
Dr. Rick Johnson
Dr. Robert Detweiler
Dr. Warren Baker
Dwayne Brummett
Ed Naretto
Eleanor Cutler
Ellen Notermann
Ellen Sheffer
Facilities Services
Frank Mumford
Gabrielle Lea
Gina Murtha
Got You Covered
Green and Gold
Harriet Ross
Jan Stiles
Jen Landers
JoAnn Lloyd
Joe Sabol
Joe Long
Joronco
Josh Cross
June Serjeant
Kathi Cole
Kathleen Pennington

Kim Gannon
Kristine Milliken
Lorraine Donegan
Lynn Ogden
Meredith Kelley
Michelle Broom
Monica Schechter
Montse Palma
Nancy Osorio
Nicky Nickelsen
Nikki Wilson
Patricia Ponce
Peter Wilt
Poly Reps
Ray Barrett
Rec Sports Staff
Reprographics
Ron Regier
Sandy Edar
Shelley Aleshire
Steve Garcia
Student Affairs
Terry San Filippo
Terri Mills
Terry Smith
Theresa Kaiser
University Graphic Systems
Valerie Hillabush
Week of Welcome

Special Thanks To Our Sponsors

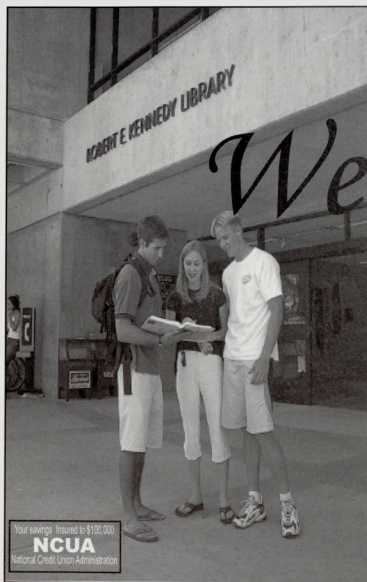
Adventure Marina
A&R Welding
Associated Students, Inc.
CellularOne
Cal Poly Foundation
Cal Poly Rec Center
Crescent Jewlers
Downtown Center Cinema
Golden One

Hearst Castle
J. Carroll
Lamplighter Inn and Suites
Paradise Island Fun Park
Patrick James
Pepsi-Cola
RRM

Roommate Referrals
SESLOC
Stenner Glenn
Office of the Vice President for Student Affairs
Student Life and Leadership
Valencia Apartments
Woodstock's Pizza

Sporting Events

day	event	time	location
FRIDAY	Baseball vs UC Irvine	5 pm	Baggett Stadium
SATURDAY	Collegiate Womens Water Polo Championship	9am-7:45pm	Rec Center Pool
	Football Green & Gold Scrimmage	10am	Mustang Stadium
	Baseball vs UC Irvine	1pm	Baggett Stadium
SUNDAY	Collegiate Womens Water Polo Championship	9am-3pm	Rec Center Pool
	Baseball vs UC Irvine	1pm	Baggett Stadium



Your Financial Education Begins Here!

Welcome

Here's a Cal Poly benefit you may not have expected. As a student here, you are eligible to

join SESLOC, Cal Poly's On-Campus Credit Union. And that can mean a lifetime of financial advantages!

- On-Campus ATM
- Checking Accounts
- VISA Check Card
- Online Account Access
- Low Cost VISA Card
- 24-hour phone access
- Student Loans
- Some of the best savings and loan rates in town.

Located in the University Union across from El Corral Bookstore ♦ 8:30 a.m. - 4:15 p.m.

24-hour, No-Surcharge ATM
www.sesloc.org

♦ (805) 543-1816 ♦ (805) 227-1030 ♦



Your savings insured to \$100,000
NCUA
 National Credit Union Administration