

72401

# **mustang handbook**

## **1970-71**



**CALIFORNIA STATE POLYTECHNIC COLLEGE • SAN LUIS OBISPO, CALIFORNIA**



# Cal Poly—A Place To Grow

Cal Poly has reached a plateau—this year it will enroll more than 12,000 students—it has arrived at the point projected to occur in 1975.

Cal Poly began in 1901 when a bill passed the California legislature providing for the establishment of a school for "mental and manual training in the arts and sciences including agriculture, mechanics, engineering, business methods and domestic economy."

The site was selected — 280 acres near San Luis Obispo for \$50,000. When the cornerstone was laid for the first building, a wagon trail through a muddy field was the only access to the site. The first class to graduate in June, 1906, was composed of eight hardy students.

The 1920s were years of growth and expansion. Six additional buildings were added, the project system commenced, printing was included in the curriculum and a junior college division was added. Then the severe economic depression hit in the early '30s. The budget was slashed and the legislature seriously considered abolishing the school.

In 1933, with the enrollment down to less than 100 students, Julian A. McPhee, chief of the California Bureau of Agricultural Education, agreed to take over the presidency of the Polytechnic School.

By 1942, the Polytechnic had become a four-year college granting Bachelor of Science degrees in agriculture and in engineering. During World War II the cam-

pus was the site of a Naval Flight Preparatory School from which more than 3,600 naval aviation cadets were graduated.

The first five postwar years saw tremendous gains for the college in curricular offerings, physical plant and enrollment. A new Science and Humanities Division was added and enrollment approached the 2,900 mark.

In 1947, the legislature officially changed the name from California Polytechnic School to California State Polytechnic College.

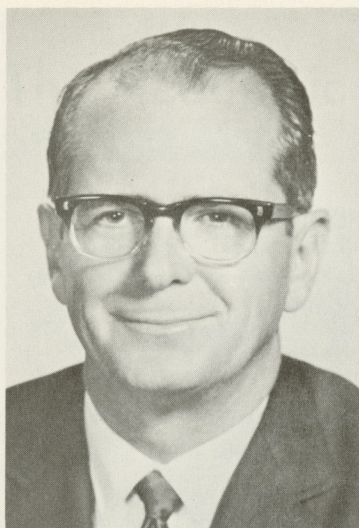
Cal Poly remained an all-male school until 1956 when girls were readmitted after some 27 years with classes without co-eds.

Today the campus includes 5,169-acres, of which 4,700 acres are devoted to the agricultural operations which provide experience-education opportunities for students. This year the college is operating under a new seven-school plan: Agriculture and Natural Resources, Architecture and Environmental Design, Business and Social Sciences, Communicative Arts and Humanities, Engineering and Technology, Human Development and Education, and Science and Mathematics.

Cal Poly offers 37 bachelor of science programs, three bachelor of arts programs, five master of science programs, three master of arts programs and a bachelor of architecture.







Dr. Robert E. Kennedy

## The Mustang Handbook

It is the objective of this handbook to introduce you to Cal Poly's friendly campus and help you become acquainted with its staff, services, traditions and activities. We hope you will find it a valuable reference book throughout the year.

—□—

### Credits:

Cover ..... Karen Treanor

### Photography—

Joe Frisna, Fresno Bee  
Boyd Wettlaufer, Audio-Visual;  
Donald L. McCaleb; Charlie  
Mendenhall, Information Services;  
Journalism Department Photo  
Bureau.

—□—

Published by the Associated Students, Inc., California State Polytechnic College, San Luis Obispo, California 93401.

Edited by Charlie Mendenhall, Associated Students Information Officer.

## A Message From The President

Your decision to attend a four-year college is one of the more important decisions you will make in your lifetime. The next important decision you must make will be how you will use the opportunity that is now yours. Each Cal Poly student has his own private hopes, his own personal aspirations for the future. Each has the opportunity to decide for himself what his major will be, how many hours he will study, how many outside-of-class activities he will include in his total educational experience. At Cal Poly the educational program emphasizes occupationally-centered education leading to careers in many specialized fields. Combined with this aspect of education are two other important factors: the availability to you of many general education courses and many co-curricular activities. We believe that the combination of these three elements (specialized education, general education, and co-curricular experiences) prepares our graduates well for careers, citizenship and leadership. No doubt many of you are aware of the restless, discordant notes which have risen on many of the nation's college and university campuses. Let me put you at ease by reminding you that the search for knowledge always has been a restless occupation. Inquiry and questioning are an integral part of "getting an education." Here at Cal Poly you will find faculty and administrators who are always ready to lend an ear to your questions. I firmly believe that open dialogue among people of varying viewpoints is the best way to avoid confrontations caused because people become so polarized they no longer are willing to tolerate the viewpoints of others.

At Cal Poly you will find all the elements that make this campus an environment of opportunity. But though the "opportunity" is here for each student, the essential ingredient is the motivation each individual has for learning.

## Contents

	PAGE		
Academics .....	3	President's Message .....	1
Clubs .....	27	Relaxation—Poly Style .....	31
College Union .....	29	Questions and Answers .....	32
El Corral Bookstore .....	9	Student Affairs Services .....	4
El Rodeo Order Blank .....	28	Counseling and Testing .....	6
Foundation .....	6	Dining Hall .....	9
Inter-Faith Council .....	17	Enrollment .....	5
Library .....	30	Health Services .....	7
Map of Campus—Inside Back Cover		International Programs .....	11
		Loans and Scholarships .....	10
		Off-Campus Housing .....	8
		Placement Office .....	10
		Residence Halls .....	8
		Student Government .....	14-15
		ASI Office .....	26
		Board of Athletic Control .....	22-23
		Co-curricular Activities .....	12
		College Program Board .....	16-17
		Music Board of Control .....	21
		New Student's Check List .....	20
		Poly Royal Board .....	24-25
		Publisher's Board .....	26
		Welcome Week Board .....	18-19
		Welcome Week Calendar .....	20



# Welcome to Cal Poly



Many of you who will be reading through this handbook will be entering college for the first time.

Your introduction to the activities and services of Cal Poly begins with our "Mustang Handbook." Planned with the idea of giving you a brief, and we hope, comprehensive view of our campus community and what it will mean to you during your college years, the handbook will answer many questions you may have concerning student activities and services.

Cal Poly offers you an unlimited scope in which to learn and discover the meaning of college life as it relates to your future.

Because our educational emphasis is vocational with practical training rather than strictly theoretical, the services and people who administer them are interested in your individual development. To implement this interest in student personnel services, which you will learn more about later in this book, the college staff is ready to serve you in many ways.

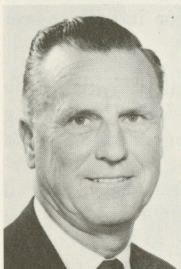
"Friendliness," which is the key word on the Cal Poly campus, pervades throughout the college, not just on a student-student relationship, but also on a student faculty relationship. The college is well known for its "how are you—glad to meet you" feeling.

The applied approach of the college—is implemented on campus through the associations of student and faculty on various boards and councils. Each of the 100 or so clubs and organizations has a faculty advisor, and, in addition to this, student government officials are invited to sit in on certain faculty committees.

Our philosophy is encouraged in all levels of activity. With the help of your department advisor, you will select your program of study, and through your campus associations you will select those activities and functions which have meaning for you. Participation is the key to learning, but selection is the key to useful assimilation of that learning. You are encouraged to become involved with your fellow students, which is one of the most pleasant methods of rounding out your education while in college.



# The Academic Side of Poly — the Seven Schools



J. Corder Gibson,  
dean

## AGRICULTURE AND NATURAL RESOURCES

This school of the college prepares students in the field of agriculture and natural resources management with the main objective of giving them a full and broad understanding of the basic factors involved in production, management, processing, distribution, marketing, sales and services in the fields related business, to make them efficient operators and managers. The school stresses production techniques and basic management to benefit to the fullest extent those returning to the farm or entering employment in agricultural fields upon leaving college.



George J. Hasslein,  
dean

## ARCHITECTURE AND ENVIRONMENTAL DESIGN

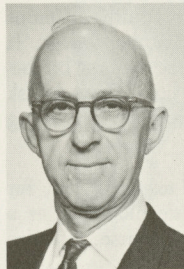
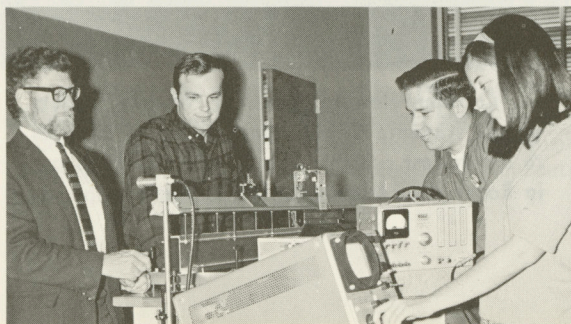
Degree programs in Architecture, Architectural Engineering and City and Regional Planning are offered. Common objectives of these programs is betterment of man's physical environment. The programs endeavor to give the student a set of social values, a technical background, and a training which releases creative faculties and in a way which will make him effective in his profession and as a person.

## BUSINESS AND SOCIAL SCIENCES

The school has two primary objectives: Education in the specific fields of Business Administration, Economics and Social Sciences, and service to all schools of the college. This school, in providing that service, offers courses satisfying general education requirements that support major degree work throughout the college.

## COMMUNICATIVE ARTS AND HUMANITIES

The school provides a wide range of course offerings. Programs leading to the bachelor's degree are offered in English, Graphic Communications, History, Journalism, and Speech. The master of arts degree is offered in English. Strong course offerings are outlined in Art, Music, Philosophy and Foreign Language and Linguistic Departments.



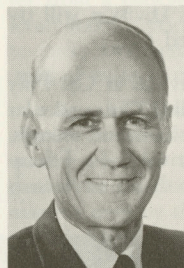
Archie Higdon,  
dean

## ENGINEERING AND TECHNOLOGY

In this school students can pursue degree programs in Aeronautical, Electrical, Electronics, Environmental, Industrial, Mechanical and Metallurgical Engineering, Engineering and Industrial Technology. Students learn to cope professionally with current engineering problems and are prepared to learn to deal with problems of the future. Students learn to understand real situations related to technical systems and components, analyze and synthesize them and to apply usable solutions.

## HUMAN DEVELOPMENT AND EDUCATION

The school provides a number of services and functions within the total college framework. Included are degree programs in Child Development, Education, Home Economics and Physical Education. Through the Education Department the school assists in co-ordination of a campus-wide teacher education program and prepares individuals who are seeking credentials. It also provides physical education and psychology courses which serve all of the college's students.



Carl C. Cummins,  
dean

## SCIENCE AND MATHEMATICS

The school offers curricula leading to the bachelor of science degree in Biochemistry, Biological Sciences, Chemistry, Computer Science, Mathematics and Physics. The school also provides general education and specialized support classes for all other schools. It also administers the Reserve Officer Training Corps program on campus.



Clyde P. Fisher,  
dean





# Student Affairs Services

When you arrive on the Cal Poly campus you will be starting on an educational adventure quite different from that encountered in high school or junior college. It is not at all unusual to be excited and perhaps a bit bewildered. If you experience some initial confusion, do ask questions rather than act in doubt. Everyone is willing and pleased to help you.

You will find many people ready to assist you, for Cal Poly is concerned with your total development as a person while in college—intellectually, of course, but also emotionally, socially and physically.

The student personnel services are services dedicated to the welfare of the *individual* student. We don't want you to feel that you are just a name or a number on the Cal Poly campus. We know that you will have some problems which will need individual attention, and all the people who work in the Student Affairs Division will try to give you personal help when you need it.

Included in the student affairs services at Cal Poly are such diverse functions as counseling, co-curricular activities, health services, housing, admissions and records, financial aids and placement, and a relatively new Educational Opportunity Program. Each of these services is

described in detail in the following pages. We suggest that you read this material carefully, for it will answer many questions for you.

The student affairs services are staffed with highly competent professional people who are skilled in working with students. These people share a common interest and a joint concern. Their common interest is you, the student; their joint concern is your welfare. You will find them eager to work cooperatively with you to keep you healthy, both physically and emotionally; to keep you well housed; to help you learn new skills in human relations and leadership; and to help you with financial problems and vocational plans.

Please note that we have said that the student affairs staff is eager to "work cooperatively with you." This choice of words is deliberate, for at Cal Poly we will always consider you a responsible participant in your own development and not a passive recipient of services. You will at all times be expected to take the initiative in solving your own problems.

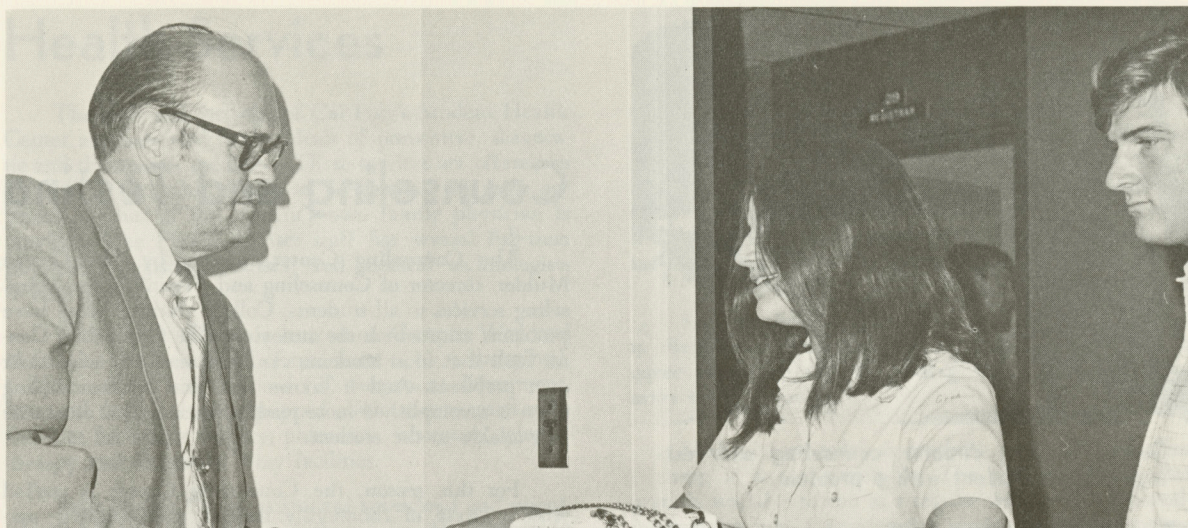
Students are always welcome in any office in the Student Affairs Division to discuss problems or to offer objective criticisms of any phase of college life.



Everett M. Chandler, Dean of Students and coordinator of student affairs services, always welcomes students to his office to discuss problems or offer helpful suggestions on any phase of college life.

Dr. Lorraine Howard, Dean of Women, assists women students develop their individual abilities to the fullest possible extent. Their offices are in Room 209, Administration Building.





Gerald Holley, Associate Director, Admissions, Records, and Evaluation, discusses procedures with a student.

## Enrollment

The purpose of the Admissions Office and Records Office is to assemble and evaluate your previous school records and to maintain a record of your scholastic achievements at Cal Poly.

The following information may provide answers for some of your questions about enrollment at Cal Poly.

**1. CHANGE OF PROGRAM:** Each student is issued a Change of Program Card during registration. The student must present the card to the instructor whenever adding or dropping courses, or changing section of the same course. The deadline for adding courses is one week after registration, and for dropping courses is two weeks.

After the deadline for adding or dropping courses without penalty, all course or section changes must be made on forms available at the Records Office, Administration Building, Room 222.

Except for college-recognized emergencies, no withdrawals from a course will be permitted after the seventh week of instruction.

**2. REGISTRATION FEES:** All students pay a registration fee. This is \$54 for the fall quarter and \$48 for each of the winter and spring quarters. Registration fees must be paid when registering for classes. Students are urged to pay the \$9.00 per quarter medical fee which is optional. Checks are accepted only if made out for the exact amount of the fee due.

**3. NON-RESIDENT TUITION FEES:** According to California state law, a non-resident tuition fee of \$890 for the regular college year (\$297 per quarter) is charged to all students from the United States who have not been legal residents of the State of California for one year prior to the date of registration.

**4. FOREIGN STUDENT NON-RESIDENT TUITION FEES:** According to California state law, a foreign student non-resident tuition fee of \$360 for the regular college year (\$120 per quarter) is charged to all students from countries other than the United States.

**5. TRANSFER STUDENTS:** Students who transfer from a college or junior college should report to the Evaluations Office, Administration Building, Room 218, to make arrangements for an evaluation of their transfer units if evaluation has not been completed previously.

**6. ATTENDANCE:** Students are expected to be regular in attendance in order to keep the quantity and quality of their work high. Absence from classes is regarded as a serious offense. An excused absence can be allowed only by the instructor in charge of the class upon consideration of the evidence justifying the absence. An excused absence merely gives the individual who misses the class an opportunity to make up work and in no way excuses him from the work required.

**7. GRADE REPORT:** Students may leave a self-addressed stamped envelope in the Records Office, Administration Building, Room 222, for mailing of their quarterly grade report, or obtain a copy at the Records Office shortly after the end of each quarter.

**8. VETERAN STUDENTS:** Veteran students who have problems regarding their enrollment under the various laws included in the G.I. Bill or California Veterans' laws should report to the Veterans' Clerk in the Records Office, Administration Building, Room 222. Students are requested to advise the Veterans' Clerk of change of units during the quarter.

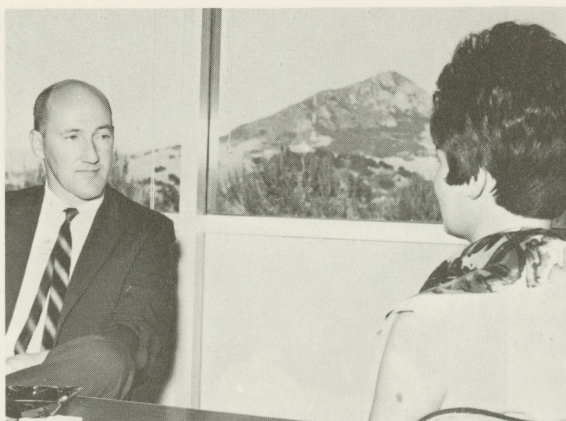
**9. WITHDRAWAL:** Students who find it necessary to withdraw from college should obtain proper withdrawal forms from the Records Office.

**10. SELECTIVE SERVICE:** The Student Certificate Form SSS 109 is available at the Records Office, Administration Building, Room 222. The college will certify enrollment and mail to Selective Service Boards.

**11. ACADEMIC REGULATIONS:** It is the student's responsibility to know and observe the academic regulations of the college as presented in the college catalog.

**12. GRADE POINT AVERAGE:** To find it, first multiply the number of grade points assigned for the course (A-4, B-3, C-2, D-1, F-0) by the units of credit earned. The sum thus obtained from grades is divided by the total number of units attempted.





George Mulder, director, counseling and testing, helps a student with a problem.

## Collegiate Codes

Cal Poly is proud of the high standard of ethical values maintained by its students. This high standard is not maintained through lengthy written edicts or statements from College administrators on how students should act. Rather, it develops from a sincere understanding on the part of the students themselves that their actions bring credit or discredit to themselves.

It is the sincere hope and expectation of your fellow students and the College that your values, too, will reflect the same high standards. In general, you will be expected to conduct yourselves as mature young men and women. Any behavior that reflects adversely on the individual, his group or the College is not in good taste.

At registration each quarter, every student receives a copy of California State College policy on student conduct on state college campuses as well as certain sections of the California Administrative Code that relates to causes for expulsion, suspension and probation of students.

Each student should become familiar with this information which is the basis for any official disciplinary proceedings on campus.

## The Foundation . . .

The California State Polytechnic College Foundation is a nonprofit corporation organized under the laws of California for the purpose of aiding and extending the educational program at the College. Mr. Eugene Brendlin is the foundation manager.

The Foundation, by agreement with the College, operates and manages campus housing and dining facilities. It also finances the student project program.

Student projects have long been a valuable part of the "learn by doing" Cal Poly instructional program. The Foundation, over many years, has accumulated a "project fund" of sufficient size to allow for the complete financing of all approved student projects other than breeding stock. Students purchasing dairy breeding stock can secure partial financing through the Foundation. Breeding herds and flocks are maintained by the Foundation for use in the instructional program.

## Counseling and Testing

The Counseling Center, headed by Mr. George Mulder, director of Counseling and Testing, offers counseling services to all students. College students often have problems arise which are annoying. The Counseling Center feels that most students can, and want, to solve their own problems. And it knows that this problem solving often is accomplished more readily when skilled assistance is available to the student.

For this reason, the Counseling Center is staffed with a group of thoroughly trained, professionally prepared counselors. They are available to you either at your own request or upon your referral from one of the College's staff.

The Counseling Center does not advise. It helps a student advise himself. To do this, the student is helped in gathering facts about himself and relating these to the opinions and attitudes he has. This process enables him to learn to know himself a little better, and often it assists him to a more efficient self-direction.

What are some of the problems which you may encounter and which the Counseling Center can help you to resolve? They fall basically into three categories: (1) educational, (2) vocational, and (3) personal.

Educational problems may arise from poor preparation in basic skills, such as reading and arithmetic. Help can be given in developing strength in those skills. Frequently, a student has poor study habits or does not use his time wisely. These can be helped. In addition, students are often perplexed about the wisdom of their choice of major. If any of these should become a problem to you, visit the Counseling Center.

Vocational problems generally focus around either the wisdom of one's choice of a vocation or probabilities of success in one's choice or the pattern of college and outside-college experience most likely to assure success.

As a new college student, you are both breaking with the old and taking on the new. This process of becoming an independent adult frequently brings with it a variety of personal problems. These may include such things as how to understand and get along with one's family, how to get along with other people, how to control one's feelings, how to make friends with the opposite sex, how to understand oneself, how to work efficiently, how to build confidence in oneself, how to learn to work under authority, and various others. Again, you are welcome to use the Counseling Center to help you resolve any of your personal problems.

Primarily, the Counseling Center can help you with a method for looking at and attempting to solve your present problems. This, in turn, will enable you better to solve future problems.



# Health Services

The staff and facilities of Cal Poly's Student Health Center are dedicated to the ideals of preventive, diagnostic and therapeutic medicine. These services are offered in an attitude of health education. In general, the same approach as that of the student's own family physician is provided. The Health Center staff has several full-time physicians, registered nurses, and medical technologists to help you.

The Health Center is located on Campus Way and Via Carta. It is comprised of two units: (1) A thirty bed, fully accredited hospital, and (2) outpatient department. You will find it a well equipped clinic and hospital with facilities for minor surgery, pharmacy, laboratory, physiotherapy and diagnostic x-ray facilities.

Your Health Center is student subsidized and oriented. The health program is financed by the student in three steps for *complete medical coverage*, one should participate in all three:

1. The college registration fee allows outpatient care from 8:00 a.m. to 5:00 p.m. Monday through Friday.
2. An annual \$24.00 health fee for fall, winter and spring quarters, or \$9.00 per individual quarter, en-

titles the student to care by a campus physician and hospital around the clock throughout the academic calendar. Additional services under this program are the departments of physiotherapy, and prescription discount in the campus pharmacy. This optional program is available to limited as well as full-time students. Non participants pay for the benefits on a fee for service basis.

3. Supplementary medical and hospital insurance is offered and handled by the Health Center in order to cover major surgery and emergency expenses incurred away from campus.

Medical care today is reaching a pinnacle of effectiveness; it is also expensive. The College Health Program is available to you as a regular student at a relatively inexpensive rate. Consider this service in your planning. Regard it as a part of your overall educational experience.

**CLINIC HOURS:** Monday through Fridays 8:00 a.m. to 5:00 p.m.. Physicians by appointment.

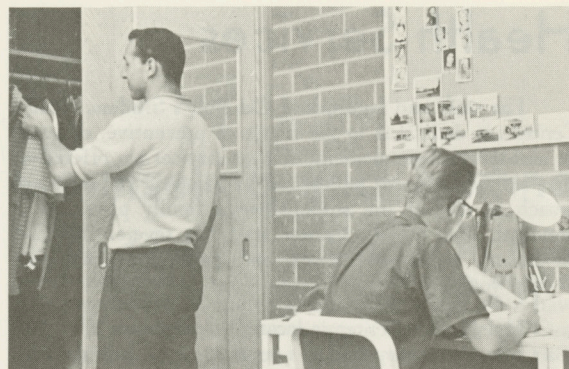
**EMERGENCIES:** 24-hour service on-campus facility. After 5 p.m. and on Saturdays and Sundays, call the Health Center—546-2151.







Time for discussion, games and music.



It's a man's world.



Robert Bostrom, director of housing, and the newest residence hall.



Relaxation in the lounge.

## Off-Campus Housing...

Privately owned and operated off-campus housing is available for both men and women students. The college does not inspect or supervise these facilities. Students living in off-campus housing are expected to observe any and all special regulations established by their landlords. Leases or housing agreements should be read very carefully before they are signed.

## The Residence Halls...

Residence hall living is a unique experience in the process of higher education and Cal Poly takes advantage of every opportunity to make it a profitable one for the 2,400 students who live in the halls.

The housing staff, headed by Mr. Robert Bostrom, housing director, works to foster a stimulating intellectual and social environment in the halls. Study is encouraged through the observance of regular quiet hours, but residents also have ample opportunity to participate in intramural sports, receptions, dances, exchanges, discussion groups and many other activities.

Each hall has its own student government organization for planning and carrying out its activities.

Alcoholic beverages are not permitted on campus, nor are students allowed to be on the campus in an intoxicated condition.

All inquiries pertaining to housing in the residence halls should be directed to the Cal Poly Housing Office.



It's a woman's world.



# The College Dining Hall

The College Dining Hall is in the social center of the campus and provides a variety of food services designed to satisfy the varied desires of students. The Student Dining Room is capable of accommodating 2,400 students per meal. Meals are served cafeteria-style in the Dining Room to meal card holders. A wide range of sandwiches, snacks, salads and desserts is available ala carte in the Snack Bar. Also, a Vending Room located in the North East end of the Student Dining Hall, adjacent to the College Union, is open 24 hours per day for light snacks and beverages.

Students living in the Residence Halls on-campus, and a limited number of students living off-campus, may purchase meal cards for use in the student dining hall. Two optional meal ticket plans are available. The Econ-



For a snack or a meal this is the place.

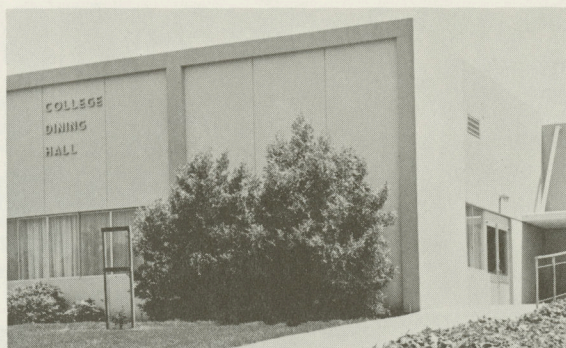
## El Corral Bookstore

The El Corral College Bookstore is located in the library annex. There you'll find all the textbooks and supplies that are needed for your classes, and the most complete selection of reference books in this area.

For your convenience the El Corral carries a wide variety of personal items such as aspirin, toothbrushes, hair spray, and soaps. Also available are various special services which include film processing, Xeroxing for class projects, and special ordering of books that are not in the regular stock.

Upon your arrival on campus you should visit the bookstore to familiarize yourself with the locations of the various books and supplies.

The El Corral College Bookstore is open from 7:45 a.m. until 7:30 p.m. Monday through Thursday. Friday 7:45 a.m. to 4:30 p.m. and from 8:00 a.m. until 12:00 noon on Saturday.



College dining hall.

omy Plan provides 19 meals per week @ \$225.00 per Quarter; (3 meals per day Monday thru Friday, with 2 meals Saturday and Sunday). The Convenience Plan provides any 12 meals within a 7-day week @ \$165.00 per Quarter.

Because your meal card must be presented at every meal, care must be taken not to misplace it. If you do, go to the Foundation Office and request a meal card replacement charge slip. Take this charge slip to the Cashier in the Administration Building, pay the replacement charge and return to the Foundation Office, with the receipt, where a new meal card will be provided.

Food service hours for meal card holders Monday thru Friday:

Breakfast	7:00 a.m. - 10:00 a.m.
Lunch	11:00 a.m. - 1:30 p.m.
Dinner	4:30 p.m. - 7:00 p.m.
Saturday Lunch	12:00 Noon - 1:30 p.m.
Saturday Dinner	4:30 p.m. - 7:00 p.m.
Sunday BRUNCH	12:00 Noon - 1:30 p.m.
Sunday BUFFET DINNER	4:30 p.m. - 7:30 p.m.

Hours Snack Bar open daily, with complete meal service as well as sandwiches, salads, etc. Items are individually priced.

Monday thru Friday	7:00 a.m. - 7:00 p.m.
Saturday	8:30 a.m. - 7:00 p.m.
Sunday	11:00 a.m. - 7:00 p.m.



The Snack Bar . . . a place to study, meet friends.





Anxious to assist you in pursuing part-time jobs and help you prepare for career employment are Eugene A. Rittenhouse, Director of Placement, and his staff. The office arranges interviews with students and prospective employers, maintains a listing of part-time jobs available during the college year.

## Placement Office . . .

The Placement Office functions as an integral part of Poly's total instructional effort. Mr. Eugene A. Rittenhouse is the director of placement. Mrs. Mary Shaw is placement supervisor and Mrs. Mary Eyler is financial aid counselor.

It is important that students realize that the Placement Office does not get jobs for them. It does offer stu-

dents assistance in pursuing employment. Student counseling in the critical process of getting ready for effective placement is highly important, for if students can be helped to know their own minds concerning what they want to do, their placement interviews will be meaningful and rewarding.

Get acquainted with the Placement Office early in your college career. It serves student wives as well as students, and provides information on part-time and summer jobs as well as career employment. You will be warmly received at the Placement Office, and every effort will be made to help you obtain the job that is right for you.



Mrs. Mary Eyler, Financial Aids counselor, handles a telephone call while Mrs. Nancy Muir, clerk, stands by with current information on loans.

## Loans and Scholarships

The college maintains an extensive loan program to help students. If you are in financial difficulty, either emergency or long range, discuss your problem with Mrs. Mary Eyler, the financial aid counselor, in the Placement Office, Administration Building Room 213.

An emergency loan from one of our short term loan funds may help you. If a short term loan is not feasible, plans may be developed for a long term educational loan for a larger amount. National Defense Education Act Student Loans as well as additional programs also are available. Applications for the loans should be submitted prior to the start of the college year since funds are limited. Cal Poly also participates in the work-study program financed by the Federal Economic Opportunity Act. Information on eligibility for this program is available through the financial aid counselor.

Scholarships for this college year have been awarded, but information regarding scholarships is available from the financial aid counselor. Deadline for submission of scholarship applications is April 1.

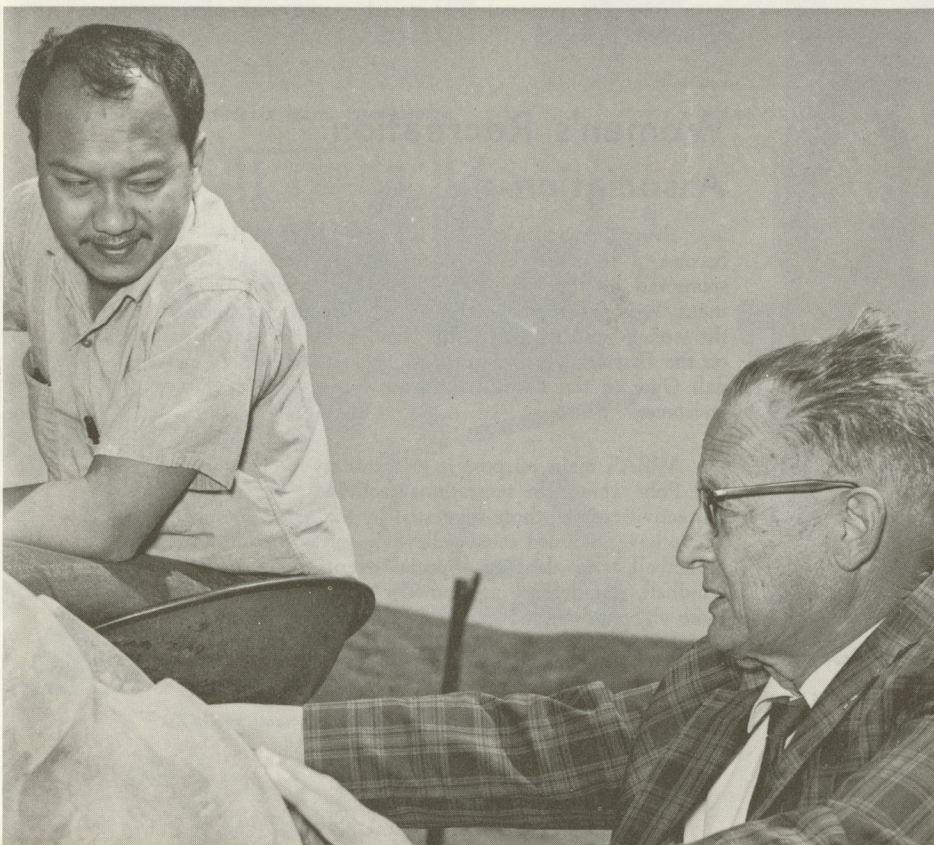


# International Programs

Cal Poly, because of its world wide reputation for excellence in the "Know How and Know Why" approach to learning, considers itself fortunate in attracting more than 450 international students from over 60 countries to its campus each year. These students take an active part in the academic and co-curricular life of the campus, both through their own interest groups and those of the general student body. The response of American students to our international visitors and their interest in learning more about them resulted in the People to People Club to which all students may belong. The Club seeks further understanding and friendships between American and international students.

**AN INTERNATIONAL** Student Council, supported by the Associated Students, coordinates the clubs and their activities. Membership on the Council is an elected position by each foreign student group. "International Week," one of the major activities of the International Council, places emphasis on promoting international understanding. During Poly Royal the foreign students display cultural exhibits and serve foreign foods.

**A foreign student of Cal Poly learns about tractors from Joe Early, Agency for International Development assistant co-ordinator.**



**Martin Miyesa of Kenya entertains fellow students with native Kenya food and pictures.**

The foreign student office coordinates foreign student activities and services with volunteer assistance from the campus and the community. Services include informal counseling, friendship families, English tutoring, orientation to the campus and community, assistance in complying with governmental regulations, and development of effective intercultural programs.

**CAMPUS** interest in the foreign relations field led to formation of a Model United Nations Chapter to promote better international understanding. Membership is made up of American and foreign students. Competition with debate teams of other collegiate chapters is a major activity.

The International Lounge is open to all international clubs for meetings and informal discussions. People to People Club hosts a coffee hour every Friday at 3:00 p.m. in the Lounge.

All students are welcome. The learning that evolves from associations of international and American students is invaluable.



# Co-Curricular Activities...

Taking part in organized group activities during your college years is one of the best ways to make friends, to discover your interests and abilities, to develop your initiative and responsibility, and to learn how to get along with all sorts of people.

Dr. Dan Lawson, and a staff of five are here to help you find your own special place in the co-curriculum. The Activities Office is located in the Temporary College Union. You are invited to come in and get acquainted.

Two program counselors, Bob Walters and David Taxis, work with students in organizing activities.

Just as the instructional divisions of the college plan the curriculum and provide opportunities for your academic growth, the Activities staff provides professional leadership and guidance so that you will make your best possible personal investment in the co-curriculum. Consequently, Dr. Lawson and the Activities staff work closely with faculty advisors and students both in planning and evaluating student activities.

Student government, Welcome Week activities, College Union functions, Homecoming and leadership training



**Trudy Beck, activities office receptionist, assists a student schedule an activity.**



**Dr. Dan Lawson, Associate Dean, Activities, and stenographer Miss Evelyn Hawkins go over activities planning.**

courses and student organizations are all part of their total service to the student body. They coordinate the campus activity calendar, publish "The Pony," a weekly calendar of student activities, and counsel students concerned with any problems relative to the co-curriculum.

The average Cal Poly student actively gets involved in two groups each year, but some students budget their time to take part in three or four activities. Whatever organized activities you choose here at Cal Poly, your opportunities for personal and social growth are almost unlimited.

## Women's Recreation Association

Every woman on campus is a member of WRA. You become a member the moment you register. WRA is sponsored by the Women's Physical Education Department. It is governed by a board of officers elected from the women student body. This board holds open meetings on the first and third Thursdays at 11:00 a.m. in Crandall Gym or the Bat Cave upstairs. Everyone is always welcome.

WRA's main purpose is to foster an interest among Cal Poly women in recreational activities. We organize our activities from those suggested by the active members. These have included co-ed volleyball, softball, badminton, basketball, and dancing. Special events have included handball, self defense and powder puff football. For the more vigorous minded WRA sponsors intercollegiate competition in volleyball, basketball, fencing, tennis, track and field and gymnastics.

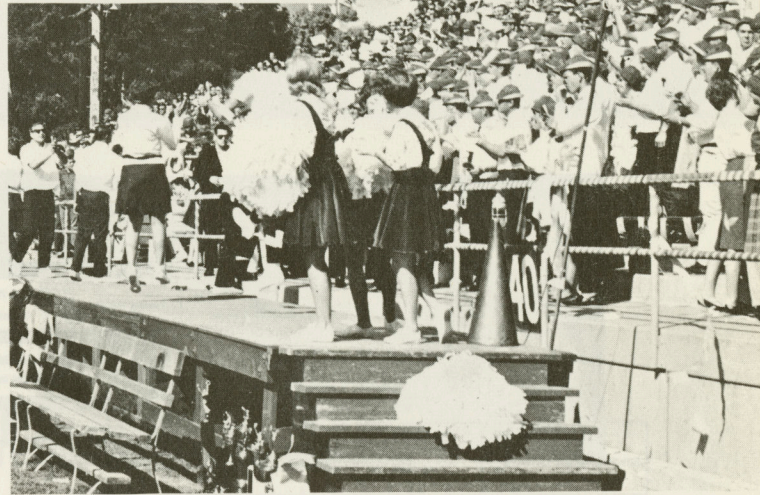
Come join the fun—it's your club.



# Student Activities



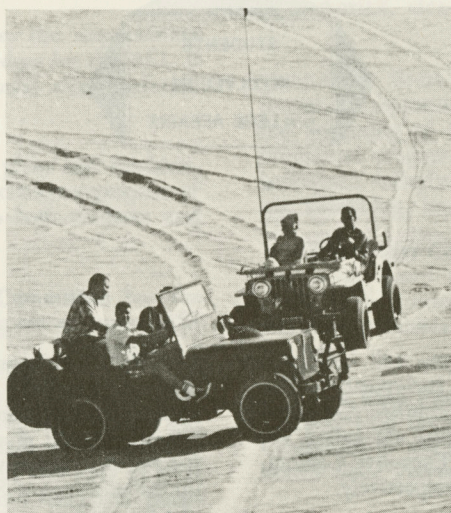
Hittin' the books . . . what it's all about.



Happiness is . . . a Mustang touchdown.



The campus: where students learn, love blooms.



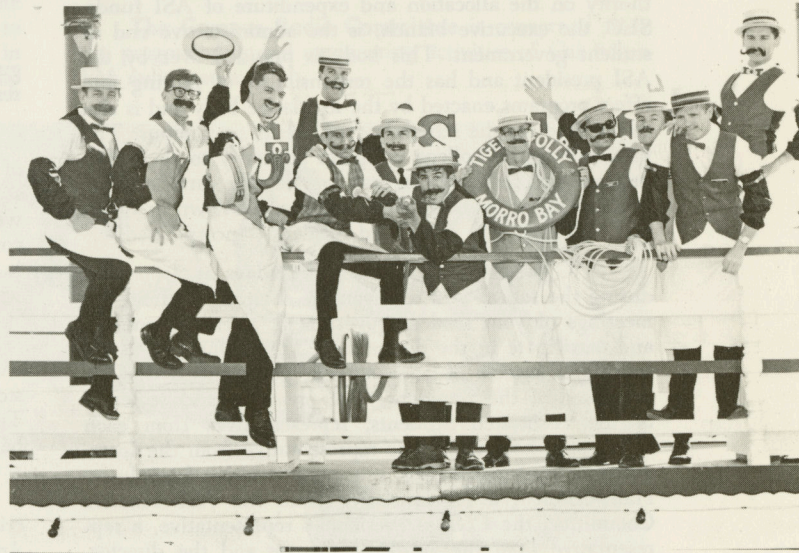
Fun at the dunes.



Rendezvous at the kiosk.



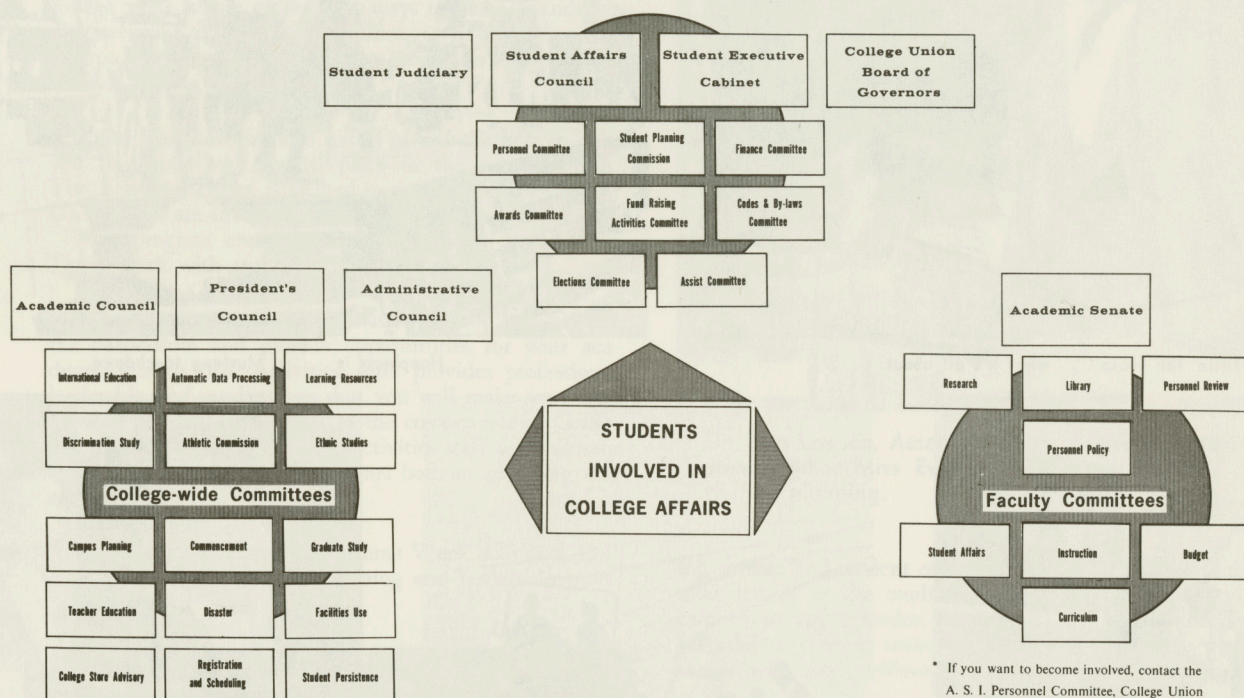
College Hour . . . fresh air stomp.



Majors and Minors frolic on Tiger's Folly.



# There's a Place for YOU



\* If you want to become involved, contact the A. S. I. Personnel Committee, College Union

When you enroll at Cal Poly, you will become a member of the Associated Students, Incorporated. The legislative and executive bodies that formulate Associated Student policy and transact its business are called the Student Affairs Council and Student Executive Cabinet, usually shortened to SAC and SEC, respectively.

SAC, the legislative branch, presided over by the ASI vice president, enacts policies and has the final authority on the allocation and expenditure of ASI funds. SEC, the executive branch, is the administrative end of student government. This body is presided over by the ASI president and has the responsibility of putting into effect programs enacted by the legislative body and is also responsible for the scheduling of events on campus. The president of the college delegates authority to these two groups each year so that they can legally carry out the business of the Associated Students as laid down in Codes and Bylaws of the Associated Students, Incorporated.

SAC meetings are held on Tuesdays at 7:00 p.m. during the school year and you are invited to attend the meetings of your student government whenever possible and participate in the discussions. This is the key to the continued success of your student government. SAC is composed of the president, vice president and secretary of the Associated Students, representatives from each school student council, one representative from the International Student Council, one representative from Inter-Hall Council, a representative from the ASI Finance Committee, the College President's representative, a representative from the Academic Senate and the director, ASI Business Affairs.

SEC is composed of the ASI president, vice president, secretary, the board chairman, the Finance Committee chairman, one representative from the Academic Senate, the ASI program manager, a recorder and the appointed representative of the College president. Do look up the meetings of SEC in "The Pony" and attend a few of your student government meetings if you can. It will indeed be a rewarding experience for you and it will be a boost to the morale of those who work for you.

Matters related to student infractions of campus regulations and the interpretation of bylaws or codes are the responsibility of the Student Judiciary.

Student Judiciary, now in its fifth year as a branch of student government, has become a significant part of student life. The Chief Justice, an elected official, along with one Associate Justice from each school form the court. You will be impressed with Poly's student judiciary; it meets on Wednesday and Thursday nights and you are welcome to observe.

If you'd like to get started in student government by working on one of the standing committees of the ASI, stop in the ASI Office and talk to Paul Banke, Tony Turkovich, Linda Scoggins, or Michael Jones. They will be happy to help you get started.

**The Awards Committee** establishes policies and criteria for awards, recommends students for "Who's Who Among Students in American Colleges and Universities," "Mustang Awards," and coordinates senior awards, in-



# in Student Government...

cluding the Gold Key award for excellence in participation in campus activities.

**The Codes and Bylaws Committee** reviews bylaws and codes of all student organizations and makes recommendations on codes and bylaws to SAC.

**The Fund Raising Activities Committee** processes applications from student organizations wishing to hold fund raising activities on campus.

**The Election Committee** conducts all ASI elections, enforces election rules, prepares and counts ballots and reports the results of elections to SAC.

**The Finance Committee** carries the responsibility for annually preparing a balanced budget for the ASI. It makes recommendations on all financial affairs referred to it by SAC and SEC.

**The Homecoming Committee** plans and conducts, in cooperation with the Alumni Association a program of Homecoming activities of interest to both students and alumni.

**The Leadership Conference Committee** has the responsibility of planning and carrying out an annual ASI Leadership Conference.

**The Rally Committee** promotes college spirit by organizing the rooting section, ushering at football and basketball games, decorating for athletic events, and by selecting and working with yell leaders and song girls. It sponsors halftime stunts at football and basketball games and organizes rallies.

**The Intramural Committee** provides a complete intramural program for all students. Its objectives are to provide recreation, socialization, a permanent interest in sports, a means to develop physical fitness and develop



1970-71 ASI officers, left to right, Linda Scroggins, secretary; Paul Banke, president; Tony Turkovich, vice-president.

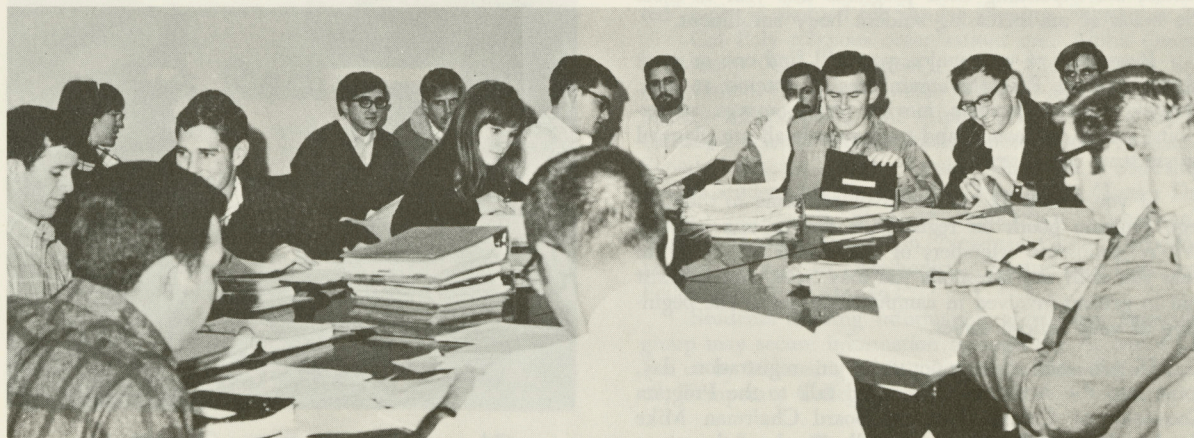
group spirit. Every dormitory and club at Cal Poly has an intramural representative who participates in meetings at the beginning of each quarter to set up the quarter's intramural program. Sports offered are touch football, basketball, volleyball, softball, handball, badminton, tennis, swimming, track and weight lifting.

**The Assist Committee** cooperates with the Faculty Evaluation Board in administering evaluation questionnaires in classrooms and in compiling the results for data processing, publication, and distribution to students in the fall.

**The Rose Parade Float Committee** works in conjunction with the Cal Poly Pomona Rose Parade Float Committee in the planning and construction of the California State Polytechnic College Rose Parade Float.

**The Student Planning Commission** is a unifying body for all student construction projects on campus.

**The Campus Radio Committee** is concerned with the programming and engineering activities of Cal Poly's FM radio station.



Finance committee deliberates budget request.



### College Program Board



Ray Charles in concert at Poly.

Founded fourteen years ago, the College Program Board and its events have been providing many of the major educational, social, recreational and cultural co-curricular activities in which Poly students participate throughout the year. Eagerly anticipating the finish of the college union building in winter of 1970, the committees are expanding their programs this year to meet the needs of an increasing student body enrollment.

Regardless of your major, you will find one or more of the College Program committees of interest to you. Dances, concerts, lectures, movies, plays, outings, art exhibits, socials, recreation and tournaments all are planned by students committees.

If you would like to get involved, come to the College Program booth on registration day or talk to your WOW counselor. Members of the Board are ready to help you with any questions you may have, and to assist you in getting involved in campus activities at the beginning of your college career.

If you miss this opportunity on registration day, come into the Activities Office and talk to the Program Counselor or College Program Board Chairman Mike Zander. They will be happy to tell you about the many choices available to you during your first quarter at Poly.

**ASSEMBLY COMMITTEE** — Selects and presents several entertainment attractions each year, and is always looking for new and unique assembly attractions. Recently the First Edition, Harper's Bizzare, The Steve Miller Band, Taj Mahal, The Craig Hundley Trio, Cold Blood, and The Moody Blues were presented. If you like a voice in selecting campus entertainment no matter where your musical interests lie then Assembly Committee is for you. *Chairman: Jeff Tonkin.*

**DANCE COMMITTEE** — Sponsors, schedules and coordinates all the college dances and plans several major ones during the year. This committee promises many new ideas for 1970-71. *Chairman: Hilary Hedman.*

**DRAMA COMMITTEE** — The committee recently embarked on a new venture — experimental theater — for those students who want to perform in drama productions on a smaller scale than the major drama department plays each quarter. Last year the committee presented "Hey There, Light Man!" and "The Petrified Forest." Any student interested in the back stage production or the acting aspect is urged to join Drama Committee. *Chairman: Ed Tinson.*



A scene from the Drama Committee's presentation, "Hey There, Light Man."



**FILM COMMITTEE** — More than 35 good films have been scheduled for showing by the committee on Friday and Saturday nights. If you'd like to help usher and select more films, join the Film Committee. *Chairman:* Steve Sullivan.

**FINE ARTS COMMITTEE** — One of the most progressive and broadly based groups at Cal Poly, the Fine Arts Committee offers the student a chance to help in the programming of cultural events. Last year, this committee sponsored experimental films, music concerts, speakers, and art exhibits. *Chairman:* Mike Nelson.

**OUTINGS COMMITTEE** — This committee sponsors all kinds of excursions over holidays and weekends throughout the school year. Last year there were 35 outings, including backpacking in Los Padres National Forest and Yosemite, skiing and tobogganing at China Peak, Chinese New Year in San Francisco, and hiking through the Grand Canyon. Would you believe over 150 members? *Chairman:* Ray Bianchi.

**RECREATION AND TOURNAMENTS COMMITTEE** — An outgrowth of Special Events, last year this group sponsored the Trans-Am Tricycle Race, a weird thing contest, a kite flying contest, and several "R.A.T. Races" during college hour. With the opening of the College Union, the committee will take on even wider responsibilities. *Chairman:* Riley Benedetti.

**SPEAKERS FORUM COMMITTEE** — Plans extensive speaker program of general interest to the entire student body. Last year's calendar included several personalities such as Dick Gregory, Al Capp, William Everson (Brother Antonius), Sam Greene, Dr. Hessel (Zero Population Growth), and Toby Lurie. *Chairman:* Mike Luna.

**SPECIAL EVENTS COMMITTEE** — Innovation and creativity are the theme of Special Events. It serves as the "clearing house" for new ideas, and organizes novel programs, and operates the "Cellar Cafe" coffee house twice each month. *Chairman:* Beth Terry.

**\*THE A.S.I. PERSONNEL COMMITTEE** — This committee is responsible for publicizing student vacancies on college wide policy committees, and interviewing applicants, and making appointment recommendations to the A.S.I. President.

\*—This Committee is not part of the College Program Committees but an Associated Students, Incorporated Committee.

## Campus Radio

KCPR-FM Radio is totally student operated, and is on the air 24 hours a day. KCPR is a Journalism Department function, but all students are invited to participate. Two units of credit are available for regular involvement in the operation of the station.

Closed Circuit Television will become a regular activity of the Journalism Department this year. Several hours of operation a week is planned in the area of news, discussion, talk, and other interesting programs. All students are invited to take part in the television production. Two units are available for regular participation.



Art shows are cultural activity sponsored by Fine Arts Committee.

## Inter-Faith Council

Cal Poly is a state-supported, nonsectarian college; consequently it does not have a chapel or programs of religious worship on campus. However, the College recognizes the importance of religious experience for the individual and for society, and encourages students to become active in the faith of their choice.

Fifteen groups now participate in striving to make religion relevant in all areas of student life and coordinate their activities through the Inter-Faith Council.

Students are cordially received at all of San Luis Obispo's 27 churches. Many of these churches participate in "New Student Church Night" by holding open houses for college students. This year, this "get acquainted" night is planned for Sunday evening, September 20.

Cal Poly religious organizations are: Alpha Omega Fellowship (Calvary Baptist), Baha'i Club, Baptist Student Union, Campus Advance (Church of Christ), Canterbury (Episcopal), Chi Alpha (Assembly of God), Christian Science Organization, Gamma Delta (Missouri Synod Lutheran), Inter-Varsity Christian Fellowship, Jewish Student Union, Lambda Delta Sigma (Latter Day Saints), Lutheran Students Association (American), Muslim Student Association, Newman Club (Catholic), Wesley Foundation (Methodist), Westminster Collegiate Fellowship (Presbyterian).

Students desiring information about any particular group may secure information through the Activities Office or by addressing an inquiry to the Inter-Faith Council, Temporary College Union.

## Opportunity for Campus Participation



# Welcome Week Board



Okay—so I'm a "new student."

## Week of Welcome

The first and probably most important activity in which the new Cal Poly student participates is the "Week of Welcome," (WOW). This is a student sponsored activity designed to assist new students in becoming a part of the Cal Poly family. Welcome Week helps you to make an easier adjustment to your new locale, concentrated studies, classes and co-curricular activities. This week of diversified activities will acquaint you with many new faces and help you gain that "at home" feeling on campus.

During Welcome Week you will get acquainted with student leaders, faculty, staff members and other new students. You will meet the president of the college, school deans, head of your department and many other faculty members. You'll be given the opportunity to ask questions about the curriculum, student affairs, and Cal Poly traditions.

The Welcome Week program is designed as an orientation on campus and may be supplemented by spending two and a half days of this program at one of our two Welcome Week Camps.

The first camp session begins at 9 a.m. on Friday, September 11, however Campus Welcome Week begins with the opening of the WOW Booth on Saturday, Sept. 12, at 11 a.m. Immediately following registration tours of the campus are available to new students and parents alike.

When you arrive on campus, register at the Welcome Week Information Booth in front of the Men's Gym. When you register at the booth you will be assigned to a WOW Club with 35 other new students and three Welcome Week student counselors. These counselors represent more than 250 students selected from applicants on the basis of academic and social achievement, plus demonstrated leadership qualities, who will be returning to campus early to assist you during Welcome Week.

The fee for the Welcome Week program on campus is \$15. This includes two luncheons, a dinner, a deluxe barbecue, movies, and get acquainted stumps, a sports day, watermelon feed, beach party, tours of the campus; a Hootenanny and dances on Friday and Saturday nights. The fee for Welcome Week on campus can be paid in advance or when you register at the Welcome Week Information Booth.

Welcome Week fees are kept to a minimum so that all students can participate in orientation. Residence halls will be open beginning at 2 p.m. on Friday, September 10. Check in will be from 2 p.m. to 6 p.m. on Thursday and from 10 a.m. to 6 p.m. each day thereafter. There is no extra charge for occupancy during this period.

"Invitation to Thought" speaker holds attention.







Campfire discussion at Ocean Pines—friendly and fun

## Welcome Week Camp

The Welcome Week Camps are held 40 miles from the campus at Camp Ocean Pines and Camp Pinecrest near Cambria, located on beautiful sites amid tall pines near the ocean.

A student staff of 25 counselors working cooperatively with faculty advisors are in charge at the camp. At least one counselor resides in each of the camp's cabins. Campers participate with counselors in informal discussions on student government, adjustment to college, and participation in co-curricular activities. Camp fires, evening songs, dancing and skits are all part of the program which will make the two and a half days spent at Welcome Week the perfect introduction to college life.

Limited space permits only 400 new students to attend camp. If you would like to have the wonderful experience of camp, please fill out and return the blank in the Welcome Week brochure immediately.

The total fee for those who also attend camp is \$30. This includes all meals while at camp and the campus activities before or after the camp sessions. There are two camp sessions—Friday, September 11 to Sunday, September 13 and Sunday, September 13 to Tuesday, September 15.

When you return from camp, your WOW Club counselors will return with you, so that you may join right in with campus WOW activities.

The WOW brochure you have received from the Admissions Office tells in detail about the Welcome Week program at camp and on campus. Read the brochure carefully for it will answer many of your questions about orientation at Cal Poly. If you have questions after reading the brochure, write to the Activities Office, Cal Poly, for further help.



WOW counselors are eager to assist new students.

## Dates to Remember

Fri., Sept. 11 — 1st Camp Session Begins

Sat., Sept. 12 — Campus Welcome Week Begins

Sun., Sept. 13 — 2nd Camp Session Begins

Wed., Sept. 16 — See Advisors, Registration

Mon., Sept. 21 — Classes Begin

**Goodbye hometown, Hello Cal Poly!**



**Your opportunity to know Cal Poly better**



# Welcome Week Calendar...

## Thursday, September 10—

Residence Halls open 2 p.m. - 6 p.m.

## Friday, September 11—

Residence Halls open 10 a.m. - 6 p.m.

First Camp Session Begins

## Saturday, September 12—

WOW Booth opens 9 a.m.

First WOW Club Meeting 1 p.m.

Reception for Parents 1 p.m.

Assembly "Invitation to Thought"

Coffee Hour

## Sunday, September 13—

WOW Booth opens 9 a.m.

Second Camp Session Begins

Campus Tours

WOW Luncheon

People Rally

Residence Hall Meetings

Movie

## Monday, September 14—

WOW Booth opens 9 a.m.

WOW Luncheon

Volleyball Championship

Campus Tours

"P" Climb

## Tuesday, September 15—

WOW Booth opens 9 a.m.

WOW Luncheon

Campus Tours

Dean's Assembly

Residence Hall Meeting

Sports Day

Watermelon Feed

## Wednesday, September 16—

See your advisor, morning

Freshman registration, afternoon

## Thursday, September 17—

Hootenanny and Stomp

Activity Display

Get Acquainted Stomp

## Friday, September 18—

Registration for those not previously registered

Beach Party

Stomp

## Saturday, September 19—

Football, Cal Lutheran, Mustang Stadium

After Game Dance, Men's Gym

## Sunday, September 20—

Student Night at San Luis Obispo Churches

## Monday, September 21—

Classes Begin

---

## New Students' Check List

Starting your college career is a very exciting and challenging experience. Some of the things you should consider before coming to college are listed below. We hope it will help you get off to a better start.

1. Take the Cal Poly guidance test prior to coming to school in the fall. If you are unable to take the tests during the summer, stop by the Counseling and Testing Center for an appointment to take them right after fall quarter begins.

2. A card will be mailed to you requesting that you have a medical examination prior to enrolling in college. Arrange for a medical examination with your own family physician and return the required card to our Health Center. Plan on joining the health insurance programs offered by the College.

**3. Make plans to set up a bank account. There are many banks in San Luis Obispo and any one would be happy to assist you in setting up whatever type of account you desire. Your check for registration must be made out for the exact amount of registration.**

4. Make your housing arrangements early. Space on campus is limited. Living off campus may involve providing your own furniture.

5. There is no bus service and limited taxicab service in San Luis Obispo which should be taken into consideration when making housing arrangements.

6. Check the size of your new living quarters and storage space when considering just how much clothing and equipment you will bring from home.

**7. Plan to take advantage of college life, both academically and socially. Take some time to get to know your instructors, and take full advantage of the excellent co-curricular offerings at Poly.**

8. If you are looking for a job, our Placement Office will be of great assistance.

9. When you have everything under control, relax and get ready to enjoy the wonderful experience of going to college. The faculty, staff, and students are awaiting your arrival and anxious to make it a rewarding and enriching one.

10. Participate in the Welcome Week program. Prior to beginning your academic studies the students at Poly have arranged to meet with you in WOW clubs and help acquaint you with the Cal Poly traditions, meet the staff and answer any questions you may have. For a bird's eye view of what's in store at our Welcome Week program we have listed a schedule of Welcome Week events. Don't miss a minute of it!



# Music Board of Control



Harold (Davey) Davidson, seated, supervises a rehearsal of men's glee club.

If you like to sing or play an instrument, try out for one of Cal Poly's famous musical organizations. We're proud of each organization, and you soon will be, too.

Tryouts will take place Sept. 17-18, 21-24. Look for times and places in "The Pony." If you have an instrument, bring it with you. If you don't own one, the department has several fine instruments.

The Music Board of Control is composed of representatives from each of the music groups. This Board in turn sends one representative to the ASI governing body.

Each year thousands of people attend the many performances of the Music Department. The Men's Glee and Collegians, the Women's Glee, and the Symphonic Band go on three separate tours of California. Each group is noted statewide for its high caliber performances. Monthly College Hour Concerts, the Winter and Spring Band Concerts and presentations by the Chamber Orchestra and singers are campus features. The 30th annual Home Concert in April highlights the program. The Music Department also produces two stereophonic LP record albums which are sold in the spring.

**MEN'S GLEE CLUB** is a large, but closely-knit group. Surprisingly, over half its members have never sung in a glee club or chorus previously. Returning members seek newcomers who possess pleasant tone quality, ability to sing a part, and demonstrate congeniality and faithfulness. The celebrated **MAJORS AND MINORS**, a 12-man chorus specializing in barbershop music, and the **COLLEGIATE QUARTET**, one of the campus favorites, are two groups within the outstanding ensemble.

Versatile is the 120-piece **CAL POLY BAND**. Attired in flashy new uniforms, the group function as the

high stepping **MUSTANG MARCHING BAND** during football season. Original shows are performed using the latest popular music arranged by its own professional arranger. As a **SYMPHONIC BAND**, the group performs many concerts on tour and on campus. Specialty groups include the **JAZZ BAND**, **PERCUSSION ENSEMBLE**, **DIXIELAND BAND** and **PEP BAND**. The **CONCERT BAND** is a second unit to the **SYMPHONIC BAND**. Experience is a prerequisite for membership in all bands.

**WOMEN'S GLEE CLUB**, also a large, closely-knit organization, appears in the Home Concert, at College Hour Concerts and makes a Central Coast tour. The

**WOMEN'S SEXTET**, a highly acclaimed specialty group, complements the club.

**THE COLLEGIANS**, a smooth sounding 15-piece dance band, play for college dances, at Home Concert and on tour. Members choose new men. There are vacancies.

**THE CHAMBER ORCHESTRA** is composed of students and faculty who continually delight concert-goers with unique and varied performances.

The **COLLEGE CHAMBER SINGERS** is a newly organized group at Cal Poly specializing in the performance of madrigals and modern works. The ensemble is made up of twenty men and women.

For answers to your questions about any music organization, see Mr. Harold "Davy" Davidson, department chairman; Mr. William Johnson, band director, or Mr. Graydon Williams, collegian director, or Mr. Clifton Swanson, orchestra director, or Mr. John Russell, director of Chamber Singers.



# Board of Athletic Control



Cal Poly is proud of its athletic program and its athletes. The program is an integral part of the total physical education program, an important part of collegiate life, a motivator for other students to participate in collegiate or intramural sports, and a builder of esprit de corps among students, alumni, faculty and staff.

For the third consecutive year, Cal Poly's athletic teams captured two national championships. Only one other school in the country matched the Mustangs during 1969-70. Poly is the defending champion in wrestling and track, having captured NCAA College Division crowns last season. In addition the Mustangs were second in tennis.

Cal Poly is a member of the California Collegiate Athletic Association (CCAA). Other members are San Fernando Valley State, Cal State Fullerton, Cal Poly Pomona and UC Riverside.

Joe Harper is in his third season as head football coach. Last year his gridders posted a 6-4 record after notching a 7-3 mark in 1968 which is the best a Cal Poly team has done in a decade. It has been 10 years since Poly has had back-to-back winning seasons. Tackle Vic Ecklund on offense and cornerback Jon Silverman, linebacker Dan Johansen and tackle Mark Sindel on defense are returning all-CCAA players who head up a list of 24 returning lettermen this fall.

Vaughan Hitchcock, one of the nation's most successful wrestling coaches, has developed a highly regarded mat program. His teams have won the NCAA College Division title four of the past five years and placed fifth in the NCAA University meet in 1969. Highlighting the 1970-71 slate will be home matches against

Oklahoma, Oklahoma State, Oregon State, Washington, Oregon and Portland State.

Placing in 11 of the 21 events, Cal Poly captured its third straight national track championship last spring under Dick Purcell. New coach Steve Simmons has a pair of returning national champions to head up his 1971 contingent. They are two-time national 880 champion Mathyas Michael and one of the world's greatest triple jumpers, Mohinder Gill.

In his second year at the helm Neale Stoner promises to field a highly competitive and interesting basketball team. Dennis d'utremont, 6' 4", a second team all-league pick, plus six other lettermen will be on hand plus a super soph in the person of 6' 5" Billy Jackson and some fine J. C. transfers headed by 6' 5" Charles Anderson and 6' 6½" Rick Stickelmaier.

Mustang athletic teams take part in CCAA play in football, cross country, water polo, basketball, wrestling, swimming, track, baseball, golf and tennis. Poly also competes in soccer league.

All students, regardless of major, are required to complete three (3) academic units of physical education. P.E. is both a state and general education requirement. Numerous activities are taught by P.E. department staffers. Students should refer to their major requirements for guidance in fulfilling the P.E. obligation.

Cal Poly's varsity coaches are:

Augie Garrido, baseball; Neale Stoner, basketball; Steve Simmons, cross country and track; Joe Harper, football; Bill Hicks, golf; Mike Cirovic, soccer; Richard Anderson, swimming and water polo; Ed Jorgensen, tennis; and Vaughan Hitchcock, wrestling.





Sophomore Mathyas Michael gives Poly's track team strength.

#### 1970 FOOTBALL SCHEDULE

Sept. 20	Cal Lutheran	Home
Sept. 26	Cal State Hayward	Home
Oct. 3	San Francisco State	Home
Oct. 10	U. Nevada, Reno	Home
Oct. 17	Fresno State	Away
Oct. 24	San Fernando Valley State (Homecoming)	Home
Oct. 31	Cal State Long Beach	Away
Nov. 14	Cal State Fullerton	Away
Nov. 21	U.C. Santa Barbara	Away
Nov. 26	Cal Poly Pomona	Away

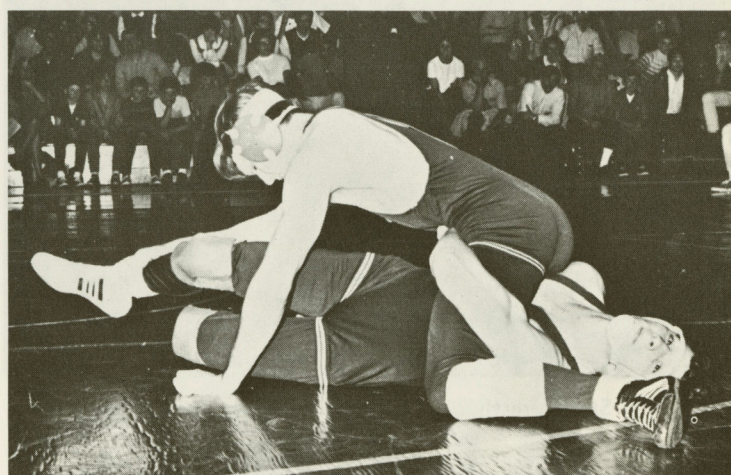
#### 1970-71 HOME BASKETBALL SCHEDULE

Dec. 4-5	Cal Poly Aggie Invitation (St. Mary's, Northwest Nazarene, Cal State, Hayward, Cal Poly)	
Jan. 23	Sonoma State	
Jan. 27	Fresno State	
Jan. 29	*Cal State Fullerton	
Jan. 30	Chapman College	
Feb. 1	Tahoe College	
Feb. 12	*U.C. Riverside	
Feb. 13	*Cal Poly Pomona	
Feb. 19	*San Fernando Valley State	
Feb. 20	U. of San Diego	
	*—Denotes CCAA games.	



#### 1970-71 HOME WRESTLING SCHEDULE

Jan. 13	Oklahoma
Jan. 15	Oklahoma State
Jan. 22	UCLA
Jan. 28	Biola
Jan. 29	Oregon
Feb. 11	Oregon State
Feb. 13	U.C. Berkeley
Feb. 13	Portland State
Feb. 20	Cal Poly Pomona
Feb. 24	Athletes In Action
Feb. 26	Washington





# Poly Royal Board



Barbara Baer, barrel racing champion, typifies the women who rodeo at Cal Poly



Steer wrestling—a Poly Royal Rodeo feature.

Annually the biggest event on the school calendar at Cal Poly is Poly Royal. During this two-day weekend event held late in April, students exhibit the results of their learning experiences of the past year. Described as "A Country Fair on a College Campus," Poly Royal is an event for the whole family.

**NOW IN** its 39th year, the annual open house displays Poly's instructional departments and the students' other activities in one big show case. Each of the College's 7 schools and 44 instructional departments has an exhibit indicative of the character of its subject matter and methods. Visitors see students engaged in the "learning by doing" process in which Cal Poly is a pioneer institution.

Co-curricular activities are represented not only by exhibits of the student organizations, but also by the activities themselves in such areas as athletics, music and dramatics.

An intercollegiate rodeo is one of the highlights of the campus extravaganza. Since its founding in 1949 Poly has dominated the National Intercollegiate Rodeo Association's Western Region. The men's team has won the regional championship every year but one since 1949. The team won the national championship in 1959 and 1970.

Band concerts, an art show, livestock judging and showmanship contests, horse show, a play, water show, several dances and gala carnival are other prominent events on the open house festival agenda.

**DEPARTMENTAL** exhibits, which include demonstrations and projects worked on by students throughout the year, require hundreds of hours of planning, organization and preparation. Since Poly Royal is a student event, each student within his department has a responsibility in the planning and progress. The eve of Poly Royal finds students working feverishly to put the finishing touches on displays and exhibits. Attendance at last spring's 38th annual event was over 65,000.

Displays span the gamut from today's computer science technology to a museum of antique printing presses and a museum of farm equipment.

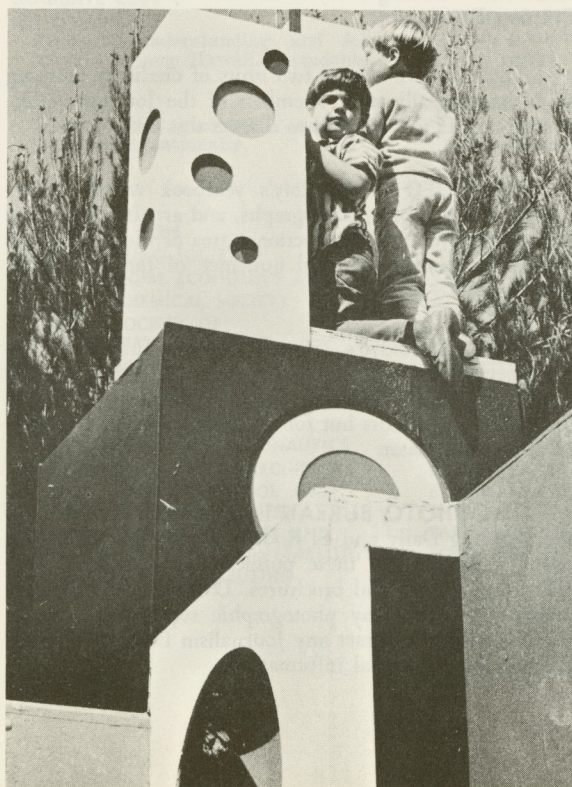
The Poly Royal Board, which is the governing body for the event, is composed of representatives from many campus groups. No doubt, you will join one of the 150 or more clubs on campus, nearly all of which take an active part in Poly Royal. The Board invites you to take an active interest in this event.





Pretty girls prepare corsages at the Ornamental Horticulture display

Super toys attract youngsters.



Poly Royal Coronation Ball

A rewarding experience is a walk through Architecture Patio.





# Publishers Board



The news desk of the Mustang Daily prepares copy for the next edition of the student newspaper.

The Publisher's Board supervises all student body budgeted publications. Among its responsibilities is selection of editors-in-chief of the newspaper, Mustang Daily, and the yearbook, El Rodeo.

The board regulates advertising in publications and administers the budget. Administration of the production of the newspaper and yearbook is delegated to the Journalism Department.

Regardless of your major — there's a place for you in Cal Poly's publications. Whether it's news writing, an interest in photography or creativity in preparation of advertising, you'll find participation in a publication activity fascinating and worthwhile.

**MUSTANG DAILY**, Cal Poly's daily student newspaper, is a source of the latest campus news and views, entertainment, discussion and serious confrontation of problems. It appears on the campus newsstands Mondays through Fridays during the school year.

Staffed entirely by students, Mustang Daily provides a communication medium for expression of students, faculty and staff opinion. Editorials and news stories that stimulate critical thinking; features, sports and photography are presented in the newspaper. They all go to add to the student's enjoyment of college.

Reporters cover an assigned "beat" to gather news. Their stories are edited, headlines written and pages plan-

ned by other journalism students in editorial capacities. Pictures are produced by staff photographers who take the photos and develop and print them in darkrooms in the Journalism Department. Actual setting of type and production of Mustang Daily is handled by students in the Printing Department.

You can earn one or two units of credit by working on Mustang Daily staff. Members of the Journalism Department staff will be glad to discuss this with you.

**EL RODEO** is Cal Poly's yearbook which depicts campus life in words, photographs, and art. It is produced by students from any instructional area of the college and is prepared under technical guidance of the Journalism Department.

While El Rodeo's 250 pages cannot fully cover every aspect of student activity for the year, it does capture a cross section and serves as a college memento not only for graduating seniors but for all students who have pride in their alma mater.

**THE PHOTO BUREAU** is an integral part of both the Mustang Daily and El Rodeo. Student photographers take the pictures for these publications as well as other college pamphlets and brochures. Darkroom facilities are provided as are many photographic supplies. Interested students should contract any Journalism Department staff member for additional information.



# Special Interests

AFRICAN STUDENTS ASSOCIATION  
ARAB STUDENTS ASSOCIATION  
INDIAN STUDENTS ASSOCIATION

ALPHA PHI OMEGA  
National service fraternity for college men with scouting experience.  
ALPHA PSI OMEGA  
Honorary national drama society.  
ALPHA ZETA  
National agricultural service fraternity.  
BLUE KEY  
National service honor fraternity for men.  
CARDINAL KEY  
National service honor society for women.

ALPHA GAMMA RHO  
AMATEUR RADIO CLUB  
ART CLUB  
BLOCK P SOCIETY  
Lettermen's club.  
BOWLING CLUB  
CAISSA CHESS CLUB  
CALIFORNIA COLLEGE REPUBLICANS  
CAL POLY DRILL TEAM  
ROTC group which performs locally and nationally.  
CAL POLY FARM BUREAU CENTER  
Campus branch of the San Luis Obispo County Farm Bureau.  
CAL POLY RIFLE AND PISTOL CLUB  
CAMERA CLUB  
Sponsors photographic contests and exhibits, supervises darkroom.  
CERAMICS CLUB  
CHI GAMMA IOTA  
Ex GI's.  
COLLEGIATE 4-H CLUB  
ECOLOGY ACTION COMMITTEE  
GRADUATE CLUB  
HUI O'HAWAII  
Promotes understanding and fellowship among Hawaiian students.  
JUDO CLUB  
KAYDETTES  
Women's drill team which performs locally and nationally.

AG BUSINESS CLUB  
AG ENGINEERING SOCIETY  
AMERICAN HOME ECONOMICS ASSN.  
AMERICAN CHEMICAL SOCIETY  
AMERICAN SOCIETY OF AGRICULTURAL ENGINEERS  
AMERICAN SOCIETY OF HEATING, REFRIGERATION AND AIR CONDITIONING ENGINEERS  
AMERICAN INSTITUTE OF AERONAUTICS AND ASTRONAUTICS  
AMERICAN INSTITUTE OF ARCHITECTS  
AMERICAN SOCIETY OF TOOL AND MANUFACTURING ENGINEERS  
AMERICAN WELDING SOCIETY AND AMERICAN SOCIETY OF METALLURGY  
ASSOCIATION FOR COMPUTING MACHINERY  
BOOTS AND SPURS  
(Animal Science)

## • • • INTERNATIONAL GROUPS • • •

IRANIAN STUDENTS ASSOCIATION  
PAKISTANI STUDENTS ASSOCIATION  
POLY CHI (Chinese)

## • • • SERVICE-HONOR CLUBS • • •

CIRCLE K  
National campus Kiwanis club.  
GAMMA SIGMA SIGMA  
Honor service sorority for women.  
KAPPA MU EPSILON  
Honorary math society.  
PHI KAPPA PHI  
National honorary society for outstanding academic achievement.  
PHI UPSILON OMICRON  
Home Economics honorary society.

## • • • HOBBY AND INTEREST CLUBS • • •

MUSIC CLUB  
MUSTANG AVIATION CLUB  
ONE-TO-ONE-TUTORIAL  
PALS  
PEOPLE TO PEOPLE  
Promotes understanding and respect with peoples of the world.  
POLY CORINTHIANS  
Yacht club for those interested in sailing.  
POLY GOATS  
Jeep club.  
POLY PENGUINS  
Campus motorcycle club.  
POLY SKINDIVERS  
Members go on diving trips around the county, hold abalone fries and other social events.  
POLY TWIRLERS  
Open to all interested in square dancing and those seeking instruction.  
RALLY CLUB  
Campus pep organization.  
RALLYEMASTERS  
Plan, present car rallies.  
RANGE RIDERS  
Horseback riding.  
ROADSTER CLUB  
For those interested in roadsters, hot rods and auto mechanics.

## • • • DEPARTMENTAL CLUBS • • •

BETA BETA BETA  
(Biological Sciences)  
C A H P E R  
(Physical Education)  
COLLEGIATE FFA  
(Agricultural Education)  
CONSTRUCTIONS SPECIFICATIONS INSTITUTE  
CROPS CLUB  
CUTTING AND REINING  
DAIRY CLUB  
(Los Lecheros)  
DIETETICS CLUB  
ELECTRONICS CLUB  
ENGLISH CLUB  
FARM MANAGEMENT CLUB  
FOOD PROCESSING CLUB  
INDUSTRIAL ENGINEERING CLUB  
INDUSTRIAL TECHNOLOGY SOCIETY  
INSTITUTE OF ELECTRICAL AND ELECTRONICS ENGINEERS

STUDENT INTERNATIONAL MEDITATION SOCIETY  
UNION OF NIGERIAN STUDENTS  
VIETNAMESE STUDENTS ASSOCIATION

PI GAMMA MU  
Social Science  
SCABBARD AND BLADE  
National ROTC honorary group.  
SCARAB  
National society of architectural engineers.  
SIGMA DELTA CHI  
National journalism society.  
SIGMA PI SIGMA  
Physics  
TAU SIGMA  
Engineering honor society.

RODEO CLUB  
Promotes intercollegiate rodeo and horse events.  
SEMPER FI CLUB  
U.S. Marine Corps platoon leaders organization.  
SKI CLUB  
Sponsors rallies and trips to near-skidiots  
Water ski club.  
SPORTS CAR CLUB  
Sponsors rallies and trips to nearby road races.  
S. N. A. P.  
STUDENT WIVES CLUB  
For married students' wives. Sponsors social, educational and service activities.  
U.M.A.S.  
United Mexican-American students.  
VARSITY RIFLE CLUB  
WOMEN'S ATHLETIC ASSOCIATION  
For all women interested in sports activities.  
YOUNG AMERICANS FOR FREEDOM  
YOUNG DEMOCRATS  
YOUNG FARMERS  
Affiliated with California Young Farmers Association.  
YOUTH FOR A NEW AMERICA

MATH CLUB  
MAT PICA PI (Printing)  
MECHANICAL ENGINEERING SOCIETY  
NATURAL RESOURCES CLUB  
ORNAMENTAL HORTICULTURE CLUB  
POLY PHASE  
(Electrical Engineering)  
POULTRY CLUB  
PRESS ASSOCIATION  
SOCIETY OF PHYSICS STUDENTS  
SOCIETY OF PLANT ENGINEERS  
SOCIETY FOR ADVANCEMENT OF MANAGEMENT (SAM)  
SOCIAL SCIENCE CLUB  
SOCIETY OF AUTOMOTIVE ENGINEERS AND MECHANICAL ENGINEERS  
SOIL CONSERVATION SOCIETY  
SOILS CLUB  
STUDENT CALIFORNIA TEACHERS ASSOCIATION





**Mrs. Phyllis Stewart, ASI  
accounting officer**

## The ASI Office



**Louretha Martin, ASI  
duplication officer**



**Ethel Spry, ASI receptionist-stenographer**

The Associated Students, Incorporated, office is located in the Temporary College Union across from the Administration Building. There you will find the ASI director of business affairs, the four student body officers, the ASI accounting officer, and several stenographers and clerks. You will also find a warm welcome awaiting you, for the ASI office exists to meet the needs of student government.

Roy Gersten, director of ASI business affairs, is employed by the Associated Students to be its fiscal officer and to administer its budget. In this position he is also responsible for the soon-to-be-completed Julian A. McPhee College Union. He and Mrs. Phyllis Stewart, ASI accounting officer, help all recognized groups with their expenditures and bookkeeping. The Associated Students Information Officer directs and arranges publicity for budgeted groups' activities and provides consulting services to ASI officers and committee members on communication matters. A Sports Information Director publicizes the college's sports programs.

You will soon discover that \$20 of your yearly fee goes toward your Associated Students card.

The money paid for your ASI card is combined with that of more than 12,000 students attending Cal Poly and is used to finance more than 100 student activities. These include athletics, homecoming, the glee clubs and bands, the student newspaper, the student yearbook, judging teams, forums and films, Poly Royal, College Program and Welcome Week.

The ASI Office provides the following services: (1) mimeographing (minutes, meeting notices, publicity) for clubs and ASI budgeted group. (2) post office boxes for all student organizations; (3) a directory of student officers and all recognized groups; (4) tickets to student body functions—athletic events, concerts and dances; (5) files of records, constitutions and reports of all recognized organizations; (6) financial services and (7) information on almost anything involving student affairs.

## The College Yearbook

Along with the associations you will maintain after graduation through your Alumni Association are those you remember through your college yearbook — the El Rodeo.

If you wish to have a copy of "El Rodeo," you should place your order now by filling out and detaching the

order form below and sending it with your check to ASI Office, Cal Poly.

"El Rodeo" is a comprehensive yearbook with over 250 pages covering residence halls, clubs, activities and student government groups. It will be a memorable souvenir of your first year at Cal Poly, so don't miss getting your copy.

### The 1971 EL RODEO (*College Yearbook*) ORDER BLANK

-----  
(YOUR NAME)

-----  
(YOUR ADDRESS)

-----  
(Make check payable to Associated Students—Cal Poly—El Rodeo)

**\$7.00**

*Make sure you receive your yearbook. Return this order blank and a check for \$7.00 to the ASI Office, Cal Poly.*



# College Union Board

The Julian A. McPhee College Union, slated for occupancy this year, will be the community center of the college for all members of the college family.

As the hearthstone of the college, the Union will provide for the services, conveniences and amenities the members of the college family need in their daily life on the campus and for getting to know and understand one another through informal association beyond the classroom.

Operations of the union, which will be under Associated Students, Inc., will be supervised by a 15-member board of governors. It will include 10 students, two faculty members, two staff members and one representative of the alumni. Additionally there are six non-voting members of the board, including the president of the college or his designee, the director of ASI business affairs, the foundation business manager, the Cal Poly director of business affairs, and one appointee each from the Student Affairs Council and the Student Executive Cabinet.

Students have the voting majority on the board.

Students desiring to serve on the board submit applications to the Associated Students, Inc., office, now housed in the Temporary College Union. An interview committee screens all applicants and nominates the board members.

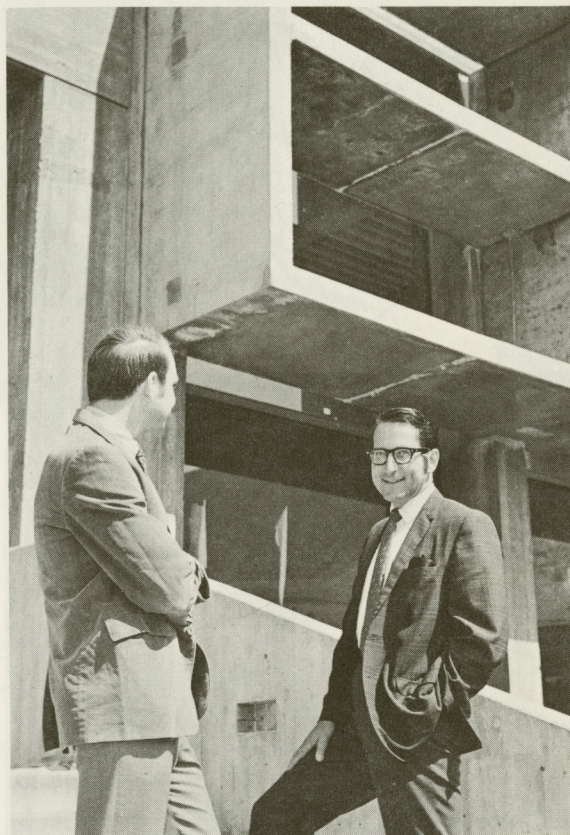
Board members serve two-year terms. Appointments initially have been made to insure that no more than half of the board of governors shall be appointed each year.

The board already in operation has drafted guidelines for use of the facility which will be distributed to all organizations using the building prior to the opening of the Union.

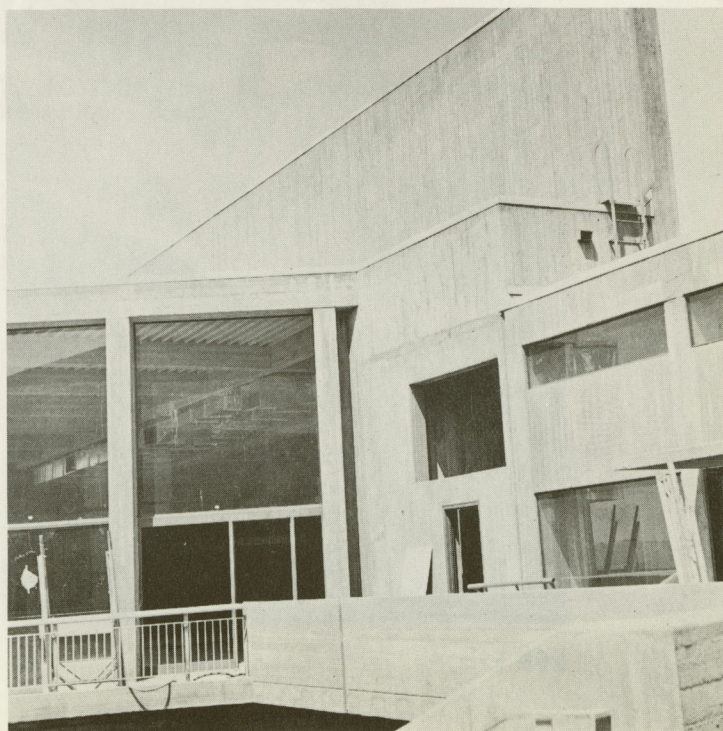
The \$4 million student-financed college union includes 105,000 square feet of floor space.

It will house lounges, conference rooms, offices of the Associated Students, Inc., food services, the bookstore and recreational facilities.

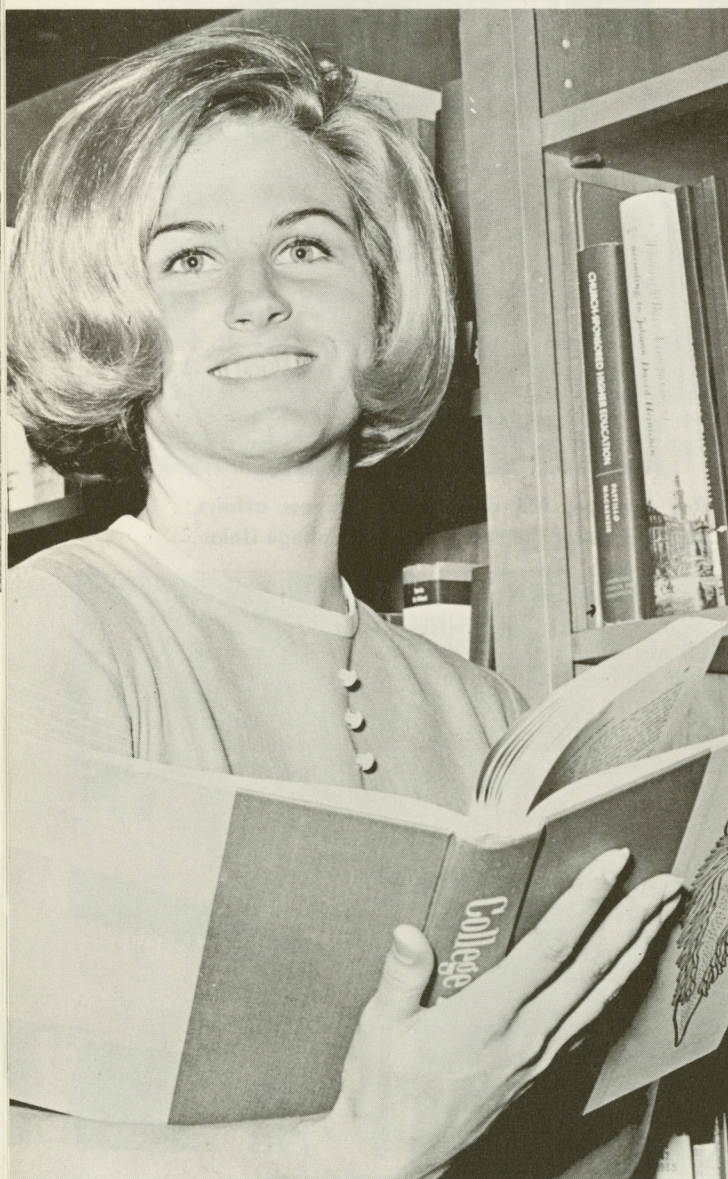
**Dave Oldfield, ASI program manager.**



**Roy Gersten, ASI director of business affairs, shows a visitor the nearly finished College Union.**







## Your College Library ... a learning place

Your College library provides an excellent and expanding workshop, staffed with professional librarians to assist you in finding information.

The Dexter Memorial Library facility offers 1,200 reader stations. The 300,000 cataloged items are housed on four floors of bookstacks.

A bibliographic center, group study rooms, typing rooms, faculty reading rooms, and a large curriculum library are provided in addition to the other regular features of an excellent modern college library.

CAL POLY has the open stack system, allowing students to select their own books and to browse. The best way to get acquainted with your library is to use it. A short time spent in learning about the library early in your college career can save you many hours as you prepare class assignments. It will help you to use other libraries as well.

Registration includes library privileges. Your student body card is your library card. Books are loaned for two-week periods, subject to renewal, provided there are no requests by other library patrons. Consult, *Know Your Library, A Guide to the Resources and Services of the Library* . . . for additional information.

**LIBRARY HOURS** during regular sessions are:

Monday through Thursday—7:45 a.m. to 10:00 p.m.

Friday—7:45 a.m. to 5:00 p.m.

Saturday—8:00 a.m. to 5:00 p.m.

Sunday—1:00 p.m. to 10:00 p.m.

The Reserve Book Room remains open until 12:00 midnight from Sunday through Thursday.

Between sessions, during examination periods and summer quarters—Hours as posted.

Closed evenings before holidays.



# Relaxation . . . Poly Style

Your leisure time should be one part of your planned program at Poly. On the campus and throughout the county there are many opportunities for recreation.

## On the Campus . . .

Intramural sports, swimming, tennis and horseback riding are only a few of the many ways to find healthful relaxation right on campus.

Residence hall and club groups compete in many sports, including softball, volleyball, and swimming. Individual sign-up intramurals may be set up in tennis, judo, handball, weight lifting, table tennis, badminton and cross-country. Each residence hall has an intramural manager. He can help you select an intramural sport.

Chess, photography, auto hobbies, squaredancing, motorcycling, and sunbathing are only samples of the varied ways Cal Poly students can relax.

## In the County . . .

San Luis Obispo County's recreational opportunities have made tourism its biggest industry.

Boating, fishing, hunting, off-highway trail bike riding, surfing, Scuba diving, golfing, horseback riding, picnicking, birdwatching and the exploration of historical sites are among the diversions available.

Here's where to find the action:

**BEACHES**—Avila, Morro Bay, Pismo, Cayucos.

**BOATING**—Morro Bay, Avila, Nacimiento Lake, Atascadero Lake, Lopez Lake.



**CLAMMING**—Pismo Beach, Oceano, Morro Bay.

**FISHING**—Santa Margarita Lake, Nacimiento Lake, Lopez Lake, Laguna Lake, various creeks throughout county; surf fishing, Montana de Oro State Park, Pismo Beach, Avila, coastal area from Morro Bay to San Simeon; deep sea fishing, Avila and Morro Bay.

**GOLFING**—Public 18-hole courses at Morro Bay and Arroyo Grande, nine-hole courses, Laguna, Sunset Terrace, Atascadero; private 18-hole courses at San Luis Obispo, Paso Robles.

**LIBRARIES**—San Luis Obispo City, 888 Morro Street; county, Bishop and Sierra Way.

**PICNICKING**—State parks, above mentioned lakes.

**SURFING**—Pismo, Avila, Morro Bay, Cayucos, San Simeon.

**DUNES**—Oceano, Los Osos, Morro Bay.

**SWIMMING**—Public pools in San Luis Obispo, Atascadero, Pismo Beach, Avila.

**ROLLER SKATING**—Morro Bay.

**BOWLING**—San Luis Obispo, Atascadero, Paso Robles, Pismo Beach.





# Who, What, When, Where, How?

## ADVISOR:

### *Who is my advisor?*

You will be assigned an advisor by the department where you are majoring. You will report to your department on Wednesday, September 16, and your advisor will be assigned at that time. He will help you to plan your course of study and give you information on how to register.

## BOOKS AND SUPPLIES:

### *Where do I buy my books?*

The El Corral Bookstore, located in the library, carries a full line of all required textbooks and supplies. It is open from 7:45 a.m. to 7:30 p.m. Monday through Thursday; Friday 7:45 a.m. to 4:30 p.m. and Saturday 8:00 a.m. to 12:00 noon. The bookstore also operates a typewriter rental service.

## CASHING A CHECK:

### *Where do I cash a check on campus?*

You can cash checks up to \$20 at the El Corral Cashier's Office, or at the College Cashier's Office in the Administration Building. Both offices are open from 9:00 a.m. to 12 noon and 1:00 p.m. to 4:45 p.m. daily except Saturday. However, you are encouraged to deal with local banks as often as possible as the campus is sometimes unable to handle the heavy volume of campus business. You will need to present your student body card or other identification.

## DROPPING COURSES:

### *If I decide to drop a course with or without my instructor's permission, do I just stay away from the course?*

No! You must change your program officially on forms provided by the Records Office. If you don't, you may receive an F for improper withdrawal.

## FEES:

### *Where do I pay fees?*

Registration fees are paid at the end of the registration line.

## LOST AND FOUND:

### *What do I do if I have lost or found an article?*

The College Maintenance Department operates a Lost and Found service. "Found" articles may be turned in at any time between 8:00 a.m. and 5:00 p.m. "Lost" articles may be claimed between 11:00 a.m. and 12 noon and 3:00 p.m. and 5:00 p.m. The Maintenance Department is located to the north of East Mount Bishop Road near the Fire Station. Students who lose housing keys go to the Cashier's Office in the Administration Building, pay a \$3 service charge and then present the receipt at the Housing Office to receive a replacement.

## MAIL:

### *How should my mail be addressed?*

If you reside on campus in a residence hall, all mail addressed to you should state your full name, room number, name of your residence hall, California State Polytechnic College, San Luis Obispo, California 93401. If you reside off campus, all mail addressed to you should contain your full name, street address, San Luis Obispo, California 93401.

### *Where do I get my mail?*

If you live on campus in one of the South Mountain residence halls or Yosemite Hall, you will receive your mail there. If you reside in a North Mountain residence hall, your mail may be picked up at Room 13 of Lassen Hall. All other postal services will be available at the El Corral College Book store between 9 a.m. and 4 p.m. Monday through Friday.

## MILITARY:

### *Does Cal Poly have an ROTC?*

California State Polytechnic College maintains an elective general military science unit, senior division, of the Army Reserve Officer's Training Corps (ROTC).

It exists to develop officers for the United States Army in sufficient quantity to provide a corps of well educated, well-rounded leaders.

The four-year program is divided into the basic course and the advanced course, each course covering a two-year period. The military instruction is combined with the regular academic curriculum.

Successful completion of the course entitles the student to a commission of second lieutenant, United States Army Reserve. In addition, the program provides for selection of distinguished military graduates of College ROTC units for direct appointment as second lieutenants in the Regular Army. Information in the ROTC program is available at registration.

## PARKING:

### *Where can I park my car?*

Students are required to pay \$9 per quarter for a campus parking permit. This permit entitles students to park in any parking space not specifically designated for staff or visitors. An excessive number of parking tickets (five or six) may result in the loss of your campus parking privilege.

## REGISTRATION AND SCHEDULING:

### *How do I register for classes?*

You begin registration by buying a booklet entitled "Class Schedule and Instructions For Registration" at the College bookstore. Study the requirements for your major in the College catalog, and then follow the detailed instructions in the registration booklet. Your advisor will help you plan your schedule.



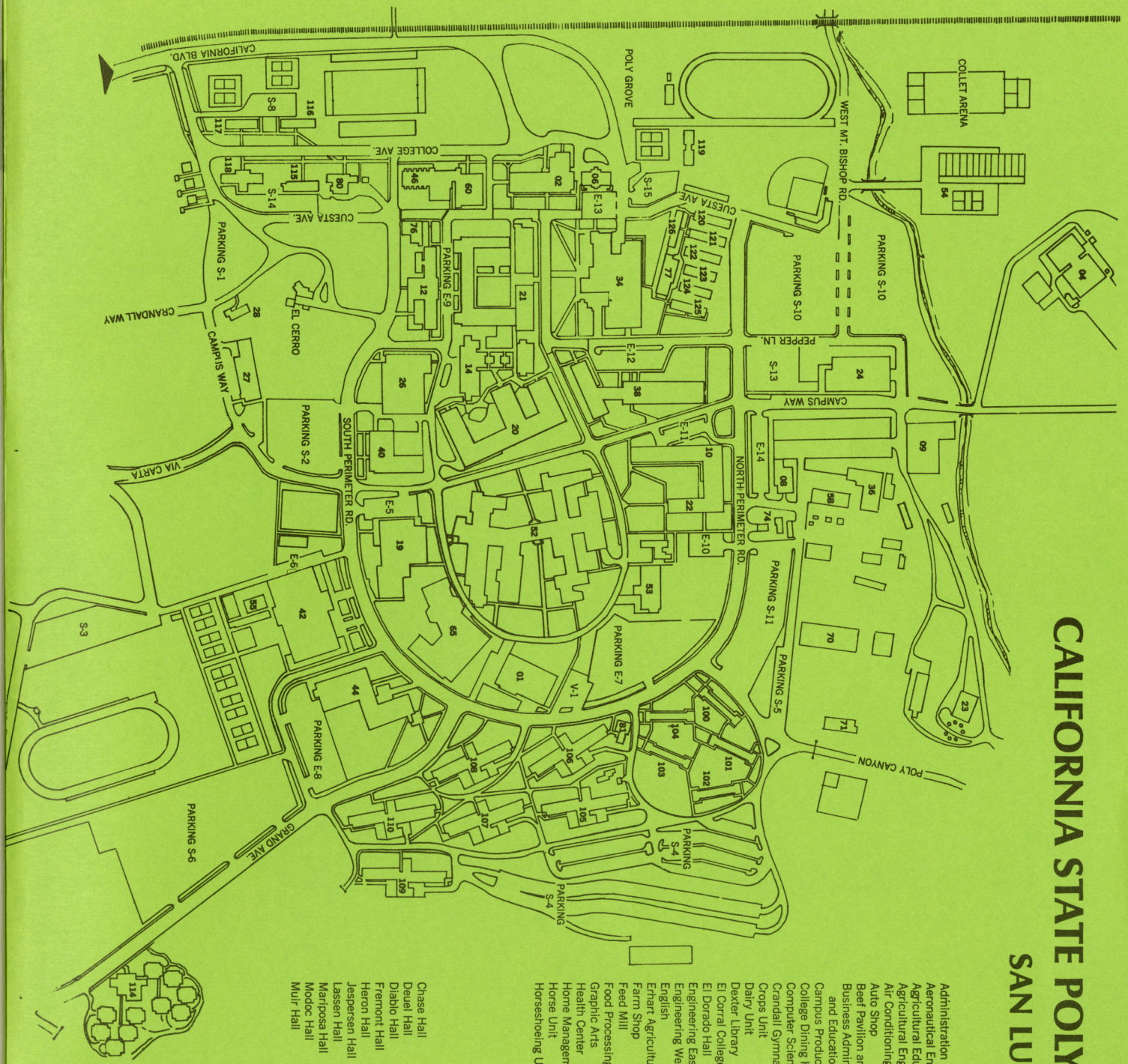
# CALIFORNIA STATE POLYTECHNIC COLLEGE SAN LUIS OBISPO, CALIFORNIA

## CAMPUS FACILITIES

Administration	01	Julian A. McPhee College Union	65
Aeronautical Engineering—Airport	04	Mechanics Shop	36
Agricultural Education	06	Mathematics and	38
Agribusiness Engineering	08	Home Economics	39
Air Conditioning Engineering	12	Meats Laboratory	70
Auto Shop	16	Maintenance and Receiving	40
Beef Pavilion and Unit	17	Warehouse	42
Business Administration	02	Mechanical Engineering	120
and Education	24	Men's Physical Education	44
Campus Produce Store	19	Monterey Hall	46
College Dining Hall	14	Music, Speech, and Drama	48
Computer Science	60	Natorium	50
Crandall Gymnasium	17	Ornamental Horticulture	74
Crops Unit	18	Poultry	52
Dairy Unit	34	Security Office—Firehouse	54
Dexter Library	34	Science North	54
El Dorado College Store	126	Sheep Unit	54
El Dorado Hall	20	Serra Hall	125
Engineering East	21	Sonoma Hall	122
Engineering West	22	Swimming Pool	55
English	10	Swine Unit (Old)	56
Ernst Agriculture	09	Swine Unit (New)	56a
Farm Shop	23	Temporary Architecture	76, 77, 80
Feed Mill	24	Laboratories	81
Food Processing	26	Temporary College Union	44
Graphic Arts	27	Theater	57
Health Center	28	Veterinary Hospital	58
Home Management House	30	Welding Shop	
Horse Unit			
Horsehoofing Unit			

## RESIDENCE HALLS

Chase Hall	115	Palomar Hall	102
Deuel Hall	118	Pumas Hall	121
Diablo Hall	101	Santa Lucia Hall	106
Fremont Hall	109	Sequoia Hall	108
Heron Hall	117	Shasta Hall	100
Jespersen Hall	116	Tehama Hall	124
Lessen Hall	104	Tenaya Hall	110
Mariposa Hall	123	Trinity Hall	105
Modoc Hall	119	Whitney Hall	103
Muir Hall	107	Yosemite Hall	114





# ALL HAIL, GREEN AND GOLD

All Hail, Green and Gold,  
May your praises e'er be told  
Of friendship and of courage  
And stalwart sons of old!  
All Hail, Green and Gold,  
In your name we shall prevail  
So to CALIFORNIA POLYTECHNIC,

HAIL!      HAIL!      HAIL!

