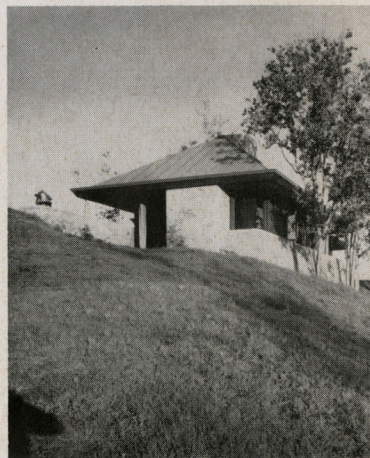
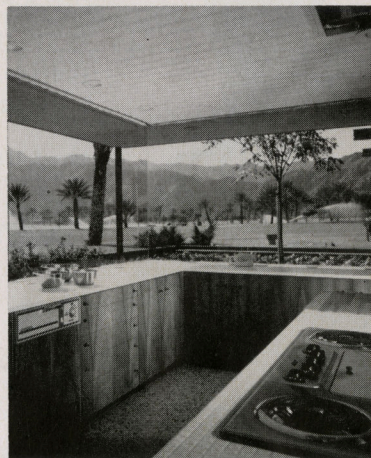
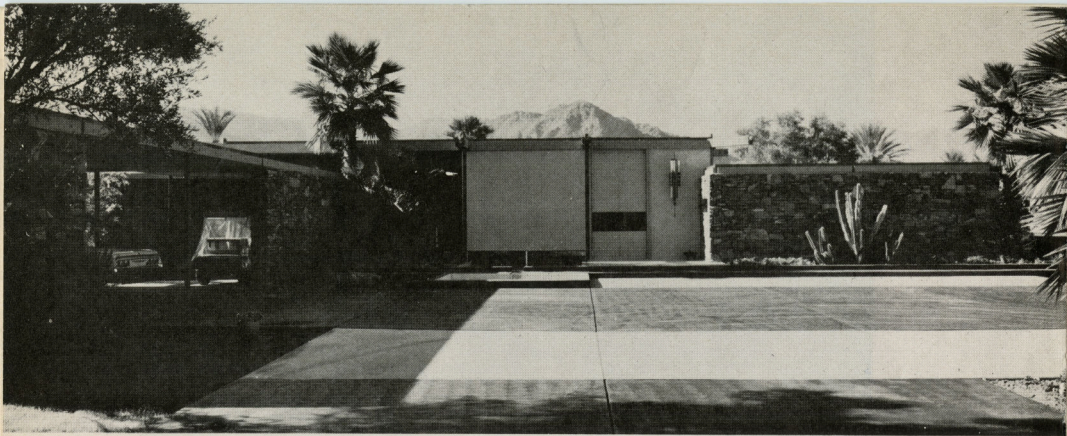


Architecture / West



THE ONLY MAGAZINE DEVOTED EXCLUSIVELY TO WESTERN ARCHITECTURE
NOVEMBER 1965

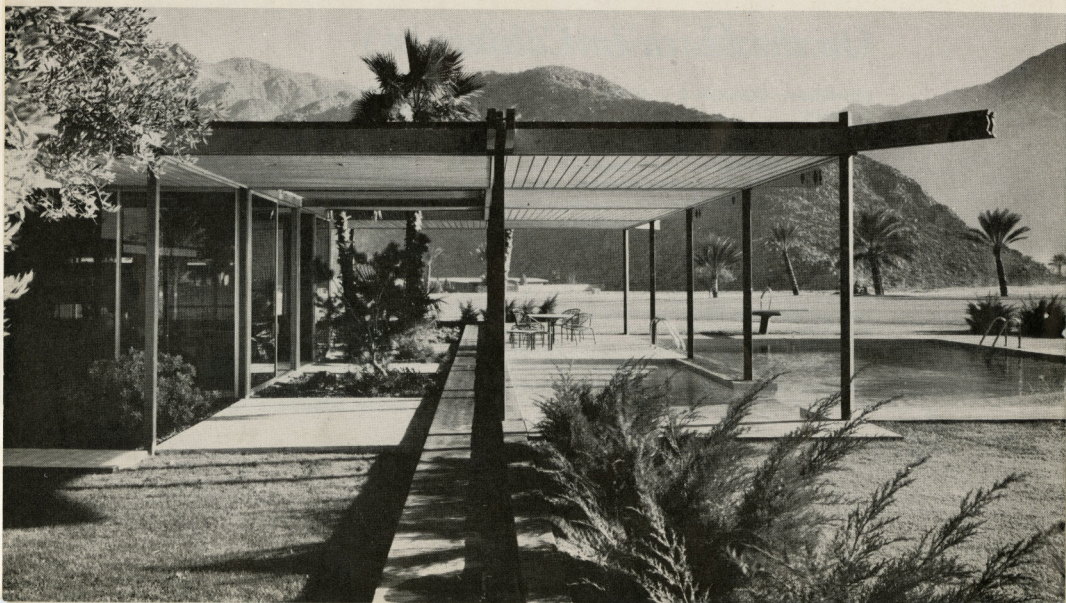




WILLIAM F. CODY | Architect

J. B. SHAMEL RESIDENCE
Palm Desert, California

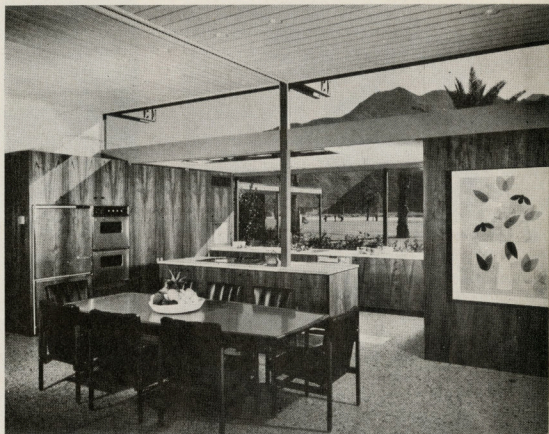
At the golf course at Palm Desert



Julius Shulman photos



THE SHAMEL residence was cited as one of the Awards of Excellence in 1965 by the American Institute of Steel Construction. Jurors' comments: "Its design reflects the infinite variety of life that takes places in a house of this kind. It is an unpretentious and straightforward solution to a beautiful location—simple, direct, straight to the point."



THIS WINTER RESIDENCE, designed for the desert, is bordered on three sides by golf course fairways. The owners desired a close relationship to the golfing activities which were primary to their choice of site as well as an open plan for informal living.

A deed restriction prohibited walls at a prescribed distance from the fairways, therefore provision for privacy of the occupants was a problem. The house was designed to encircle an interior screened court, permitting outdoor privacy, protection from occasional wind, and a secluded view of outdoor space for all living areas.

Comprised of two levels, the living room offers a private conversation space at the fireplace, or lower level, and steps up to another sitting area overlooking the swimming pool and golf course. The dining and kitchen areas continue from the living room space with only visual separation. Family and guest bedrooms are at opposite sides of the building for maximum seclusion. These rooms have individual terraces which overlook the fairways.

The small, well proportioned steel columns enhance the appearance of the building. Due to earthquake consideration in this area, steel provides a rigid frame structure with extensive glass areas creating an open, floating effect of the roof. William Porush was structural engineer; Design Development Corporation, general contractor.