

*14th Annual*

# POLY ROYAL

MAY 3-4  
1946



"A COUNTRY  
FAIR ON  
A COLLEGE  
CAMPUS"

*See You at Cal Poly*

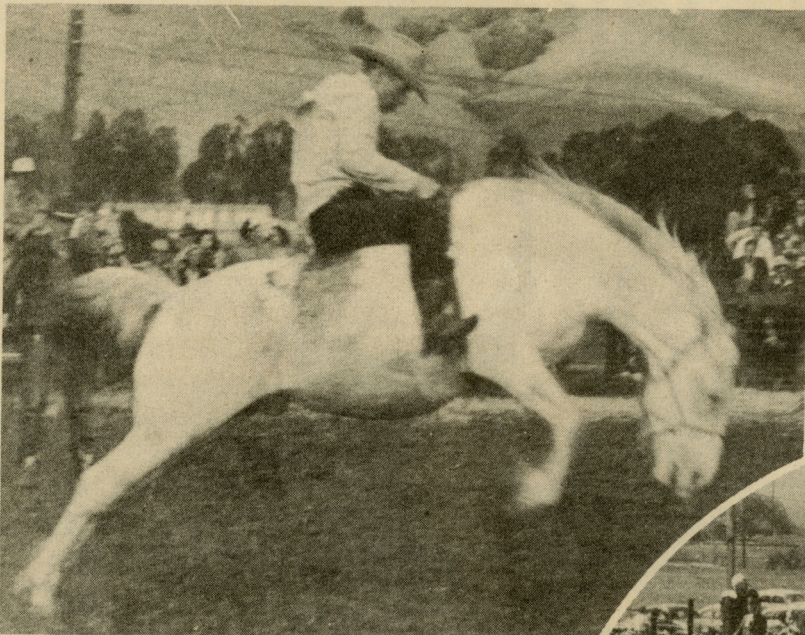


# COUNTRY FAIR ON A

A "SHOW WINDOW" of student activity... The 1946 "country fair on a college campus" typifies the Poly Royals that are in the annals of Poly history, although this year's show is different in that the nucleus of the show is made up of former students who recently served with the armed forces. The 2000-acre campus at San Luis Obispo is the home of over 700 industrial and agricultural students, 80% of them veterans.

The motto of California Polytechnic College is "Learn by Doing," and the 1946 fair will present to the guests and friends of Cal Poly the most unusual College show in the country, displaying the united efforts of all the students.

As in previous years the Poly Royal is a student-operated open-house of the training activities of every one of the agricultural and industrial departments of the college. In the agricultural division there will be public judging contests of dairy cattle, feeder steers, market hogs, and all classes of poultry. The horticulture department will display a complete array of plants and flowers



## POLY ROYAL PICTORIAL

JOHN SHEA  
*Editor*

CHARLES CHAPMAN  
*Photographer*

A bulletin of the California  
Polytechnic School — Pub-  
lished Quarterly, May, 1946

Entered as second-class matter, August 9, 1918 at the post office  
of San Luis Obispo, California, under the Act of August 24, 1912.



# COLLEGE CAMPUS

gathered from all parts of the world. The industrial departments will have complete shows and demonstrations in air conditioning and electrical industries, and the aeronautics division will display aircraft used for instructional purposes, complete repair shops, and a newly constructed landing strip on the campus. Guests of the fair will become acquainted with the campus in all of its agricultural and industrial life through "campus tours" operated by the students.

As in the past, and now, the students of California Poly are proud to say that this year's show will be the greatest of all the others that have been held. The "country fair on a college campus" is the only one of its kind in the United States, and to the guests that have visited California Polytechnic College, and San Luis Obispo in the years gone by, and to the many thousands that have heard of California Poly's Poly Royals, we extend a cordial invitation to come to the campus on May 3 and 4.

*Left:* Out of the chutes and hard-pounding leather comes a Poly rider during the rodeo held at the 1942 Poly Royal. Calf roping, bronc busting, steer stopping, and a stock horse class show will hold the highlights in this year's rodeo.

*Center:* A test of speed and skill in the sack tying contest brought many a laugh and spilled grain during one of the "country fairs."

*Below:* There will be no meat shortage during the 14th Annual Poly Royal barbecue. Guests will have all the western beef they can eat and they shall be entertained by the California Polytechnic Collegian Band during the barbecue.

## DEDICATION

TO THE Cal Poly men who lost their lives in World War II . . . The 1946 Poly Royal is held in honor of all former Poly men who made the supreme sacrifice in the dark days just passed. It is befitting that the first peace-time Poly Royal, which is headed by returned students and veterans, be dedicated to former buddies who gave their lives for their country. Poly Royals of the past were the efforts of these men, and it is with the deepest heartfelt sympathy that we, the students and faculty of California Polytechnic, pay tribute to their courage and unselfishness, and give thanks to the Almighty that we are able to continue on with the type of life they fought to preserve.





# COUNTRY FAIR ON A



## THURSDAY, MAY 2

1:15 P.M. Reception—Miss Poly Royal, at depot.

Parade from depot to Anderson Hotel.

6 P.M. Informal Dinner for Queen and Attendants. Reception. Student Store, with Students' Wives.

## FRIDAY, MAY 3

10 A.M. Opening Assembly, Main Arena.

Introduction of Queen and Attendants.

Welcome Home to Veterans and Alumni—

*Julian A. McPhee.*

11 A.M. Open House All Departments.

12 noon Lunch.

1 P.M. Beginning Preliminary Student Project Judging.

Open House All Departments.

5:30 P.M. Meeting of Officers, Alumni Ass'n, College Cafeteria.

7 P.M. Welcome Home Rally and Song Fest, Open Air Meeting.



*Top:* Princesses from San Luis Obispo . . . Miss Anita Filipponi, Miss Bernice Mackenzie, Miss Amanda Waite, and Miss Helen Burnett. These very beautiful young ladies, the envy of all San Luis young women, are the Princesses who will attend the Queen. The Poly Royal Queen will come from the student body of San Jose State College and will remain unknown until she arrives on May 2.



# COLLEGE CAMPUS

*Left:* We did it before and we'll do it again . . . General Superintendent Les Vanoncini, again in the center of things, plans with the rest of the Poly Royal officers for the finest show in history.

*Left to right, top row:* Dwight Wait, Ade Harders, John Shea, Louis Barr, Mr. Carl Beck, Roland Sears; *bottom row:* Leslie Vanoncini and Herb Brownlee. These men are all former students having returned to Poly to finish their education after service for their country.



*Right:* Backbone of the 14th Annual Poly Royal . . . The men who have been working towards the greatest Poly Royal ever staged were appointed to the Poly Royal executive committee after the Christmas holidays, and they have devoted a great deal of their time outside of the classroom in getting the two-day student show ready for presentation to the public.



## SATURDAY, MAY 4

- 9 A.M. Conclusion Preliminary Student Project Judging.
- 10 A.M. Adult Farm Organization Livestock Judging Contest, Main Arena.  
Plant Identification Contest, Propagation House.  
Baseball Game—Cal Poly vs. College of Pacific.
- 10:15 A.M. Sack Sewing Contest, Main Arena.
- 10:30 A.M. Potato Peeling Contest, Main Arena.
- 11:30 A.M. Ladies' Nail Driving Contest, Main Arena.
- 12 noon Barbecue in Poly Grove.  
Musical Concert—Band and Glee Club.
- 1:30 P.M. Rodeo, Main Arena.  
Opening Pageant.  
Parade of Champions.
- 6 P.M. Welcome Home Banquet—Cafeteria No. 2.
- 9 P.M. 14th Annual Poly Royal Coronation Ball—Gymnasium.
- 10 P.M. Coronation of the Queen.



# COUNTRY FAIR ON A

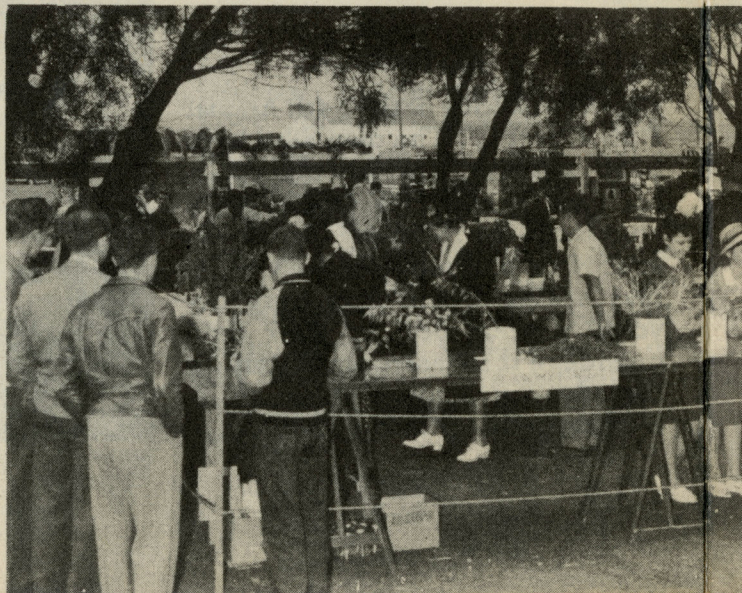


**QUEEN** of them all . . . The coronation of the Poly Royal queen is the climax to the 14th Annual Poly Royal. This year's queen will remain a surprise until she arrives on the campus on May 2. To cement closer relationships between the state colleges and Cal Poly, the Poly Royal queen selection is given to a different state college each year, while the queen's attendants come from San Luis Obispo. San Jose State College will select the queen for this year's Poly Royal. The Coronation Ball is the most important social event on the college calendar.



*Upper:* Seen at one of the recent Poly Royal celebrations was this amazing machine which picks a chicken clean as a whistle in less than twelve seconds. The Poultry department also will show hens that have laid over 1000 eggs.

*Right:* The Crops department always has an interesting show in their agronomy contest and this year promises to be the most entertaining one ever before presented.





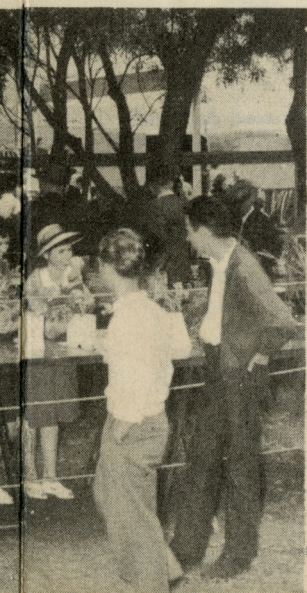
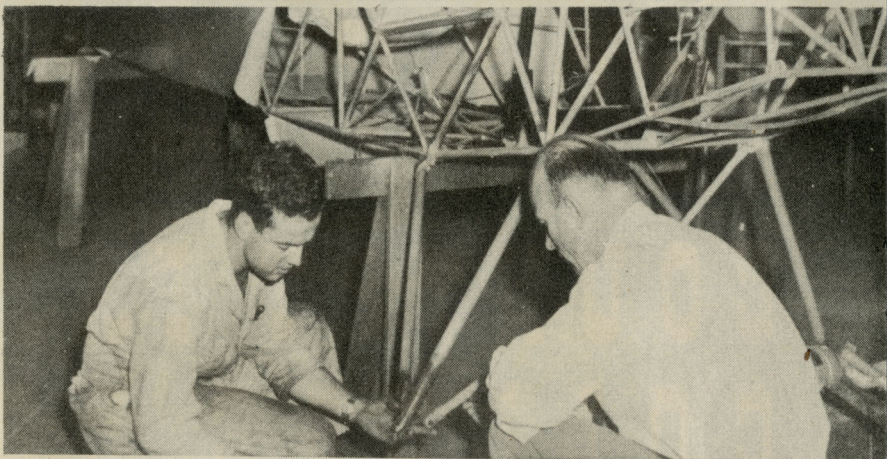
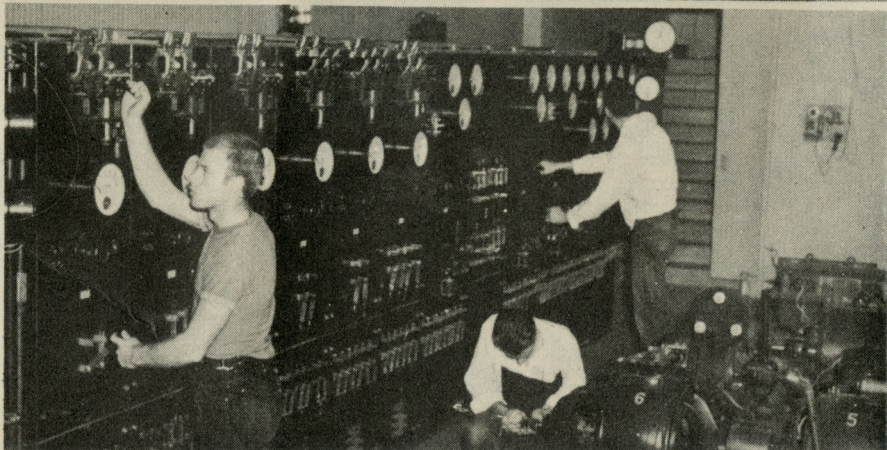
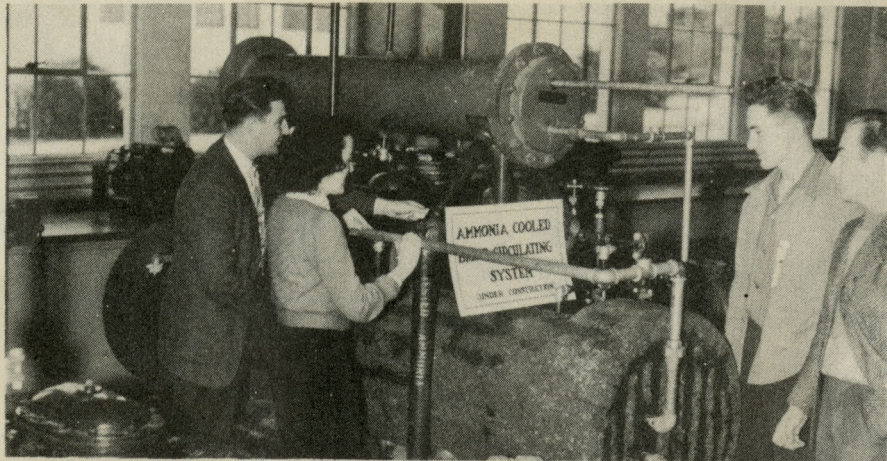
# COLLEGE CAMPUS

**T**HE LATEST in air conditioning and refrigeration will again be a spotlight of attraction and this year's open-house will be unusual in that the General Superintendent of the 1942 Poly Royal, James MacDonald, seen here third from the left, is now an instructor with the mechanical engineering department.

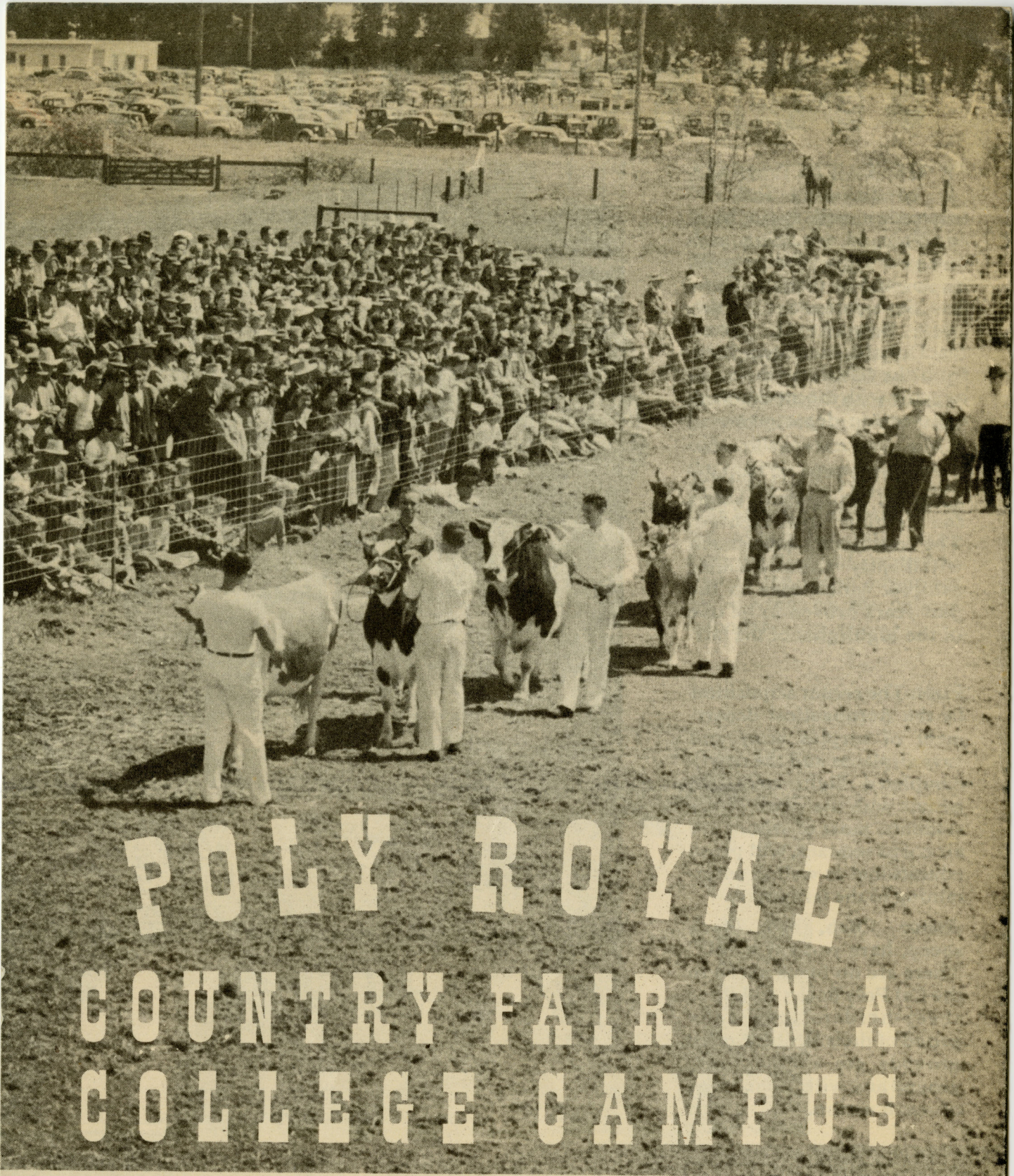
**S**TUDENT-RUN power plant equipment keeps the campus well-lighted. The electrical department will display various scientific exhibits which have in the past years proved to be one of the highlights of the fair.

*Right:* The recent acquisition by the Aeronautical department of surplus army and navy airplanes and the newly completed flight strip, together with the work of the students, most of whom are air corps veterans, will prove educational as well as entertaining to the fair guests.

*Below:* "Bah, bah, black sheep, have you any wool?" There are no black sheep in the Cal Poly flocks and these sheep-herders are really proud of their lambs. Rodeo grounds are in the background and will be the scene of much action.







POLY ROYAL

COUNTRY FAIR ON A  
COLLEGE CAMPUS

CALIFORNIA POLYTECHNIC  
SCHOOL BULLETIN

San Luis Obispo, Calif.  
(Return Postage Guaranteed)

Entered As Second  
Class Matter

Acceptance for mailing at special  
rate of postage provided for in  
section 1103, Act of Oct. 3, 1917.  
Authorized Aug. 9, 1918.