

BINNACLE

California Maritime Academy

December 1959



IN THIS ISSUE:
MIDDIE'S CHOICE
WHO'S WHO

STUDENT COUNCIL NEWS
QUESTIONS & ANSWERS
HUMOR & POETRY

The BINNACLE is a monthly publication of the California Maritime Academy.

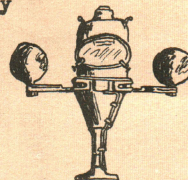
The opinions expressed herein are not necessarily those of the corps, the faculty or the administration.



CO-EDITORS
PHOTOGRAPHY
STAFF CO-ORDINATORS
STAFF

ADVISOR

Henry & Juris
Endrody
Green, Bowman
Brinck, Burrell
Winston, Skibbe
Noblitt, Felland
Heitman
Cdr. Heron



BINNACLE SPEAKS

What is the one thing essential to every institution such as the type that we have here at Keema if it is to function properly in an atmosphere of friendship and good spirit? I would say the answer to this question lies in a state of high morale. A high morale has the power of instilling in students an interest in learning and progressing to improve the conditions of their surroundings. It also helps us over those rough spots encountered here and leaves us with more pleasant memories in years to come. This is the lifelong impression of your college life which will stay with you.

Much has been said from time to time about the standard of morale here at the Academy, but I feel that it is time we took some more positive action. At present morale here is fair, but just "fair" isn't enough! What can we do to improve morale? I contend that the following plan would do the most good and involve the least trouble.

The one important thing that we lack here that is in evidence in all other colleges is one good Varsity team. Sports are the best way to reach the whole Student Body. Sports provide something that everyone can take part in somehow. A good team is something we could all take pride in. There are few greater prides than being able to speak highly of your school or organization on the topic of sports.

Now let's review the facts for a moment. Do we or have we had one team here at the Academy in the not too distant past that we can be really proud of? I am inclined to say no, and I feel I am not alone in this opinion.

Not to be misinterpreted I am not implying that Mr. Thwing hasn't, done the best job possible. I think he is doing all he can. The trouble

lies first with us and then with some trivial policies which need revision.

Lately I have noted that the turnouts for our Basketball games have been encouraging. I am speaking of the audience. But perhaps it would help if we could develop a little more spirit by means of a few organized cheers and possibly some musical instruments, to make more noise than anything else.

But even more important if we were to offer some worthwhile privileges to our participating team members we could instill a little fighting spirit and draw out our best athletes to the teams.

About these privileges, I don't feel it is fair that third classmen who give up their time to attend regular turnouts should be penalized, or as an example, be made to make up the work time that they miss during these times, with additional cleaning details. This tends to drop the spirit of the team and discourage regular attendance, which of course hurts it as a team. If anything, these men should be rewarded, but not penalized.

Also it should not be impossible to provide training tables at every meal with a little something extra for our athletes.

Naturally there are some people who are afraid to try these things, who are satisfied with things in the present unsatisfactory condition, but I am positive that these things would be beneficial to all if they were carried out under proper supervision.

Such programs are in existence. Other schools of this type have winning teams, and I see no reason why, if we all get behind them we couldn't have some too. If you agree with me on this subject, I suggest that you mention the fact to your Athletic Council and Student Council representatives so that we may get some positive action.

Henry

Chris Godf



Charlie (CHAS) his head high. Why to you "Chas" pet. Godfredson. She re remarkable figure of ventures galore.

Born November years of War, Peac 1955, she sailed ac ific to Hawaii. She ever, and now atten She resides in the name.

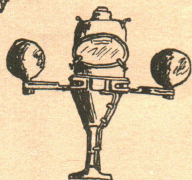
Her father, a builder has passed to her, for now she of sailing.

As a note of a member of the "S Team" with great Olympic game prove

Chas will be Bob Zetterberg for Chris. They have for about a year been no formal "ar see what happens!!

I met a girl the Her golden hair v Her eyes were so A color sort of Her cheery smile It set my heart After just a dri And as we stood

on
ot
ty



MIDDIE'S CHOICE

Chris Godfredson



Charlie (CHAS) Bonham can hold his head high. Why? Well we present to you "Chas' petite chick, Chris Godfredson. She represents a truly remarkable figure of a girl with adventures galore.

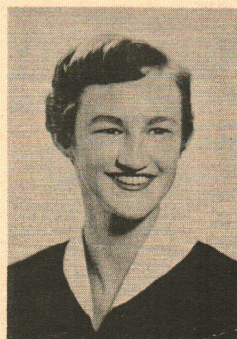
Born November 12, 1940, Chris saw years of War, Peace and Journey. In 1955, she sailed across the vast Pacific to Hawaii. She has come back however, and now attends San Rafael J.C. She resides in the town of the same name.

Her father, a successful boat builder has passed some learning down to her, for now she delves in the art of sailing.

As a note of interest, Chris is a member of the "Synchronous Swimming Team" with great possibilities of Olympic game prowess.

Chas will be forever grateful to Bob Zetterberg for introducing him to Chris. They have been going together for about a year now, but there has been no formal "announcement." Let's see what happens!!!...

Drue Whitaker



Theodore VanZant, Ted to most of us, is a judge elite of the gentle sex. Drue, his girl, was born Mar. 26, 1939. She is now at the trim age (in this case very trim) of twenty.

Drue has seen much advancement in her 20 years. She graduated from Sacramento J.C. and then pulled down a very good position of secretary at the Sacramento office of the Department of Motor Vehicles.

She is a petite brunette, (5'2", and 100 pounds. At Sacramento she belonged to a well known sorority, Kappa Phi Delta.

Ted has pride in knowing that Drue's an artist of sorts. She doesn't delve in a specific field, but paints as she sees fit. She must turn out some interesting pieces of art.

We found out from Ted that Drue was the incentive behind a roaring first class party. She really loves good times.

Whenever you see a '58 Bel Air hardtop cruising by, look for Ted and Drue. (Ted usually drives? Ted always drives!!!)

Dream Girl

I met a girl the other night,
Her golden hair was sure delight.

Her eyes were sort of blue & greenish,
A color sort of in-betweenish.

Her cheery smile was quite dis-arming,
It set my heart to four-alar ming.

After just a drink or four,
And as we stood by her front door.

She held my hand up to her cheek,
But then we heard the stairway creek.

She left me standing on the stair,
As the moonlight glistened from her hair.

Since then I haven't seen her face,
Although I've searched just everyplace.

Perhaps a dream in unnoticed slumber,
But I wish I had that dollies number.

and then with
s which need re-

noted that the
Basketball games
ing. I am speaking
perhaps it would
develop a little
of a few organ-
ibly some musical
e more noise than

important if we
worthwhile priv-
ipating team mem-
a little fight-
out our best ath-

eleages, I don't
third classmen
to attend reg-
be penalized, or
to make up the
iss during these
al cleaning de-
drop the spirit
rage regular at-
se hurts it as
hese men should
enalized.
t be impossible
tables at every
something extra

re some people
these things,
things in the
condition, but
e things would
if they were
supervision.
in existence.
pe have win-
reason why,
m we couldn't
ree with me
gest that you
your Athletic
oil represen-
t some posi-

Henry

NEWS



THANKSGIVING FEAST

Once again this year the Corps of the California Maritime Academy was rewarded with an outstanding Thanksgiving meal. As they do each year Mr. Ross and his staff went all out to prepare for this event.

The main dish consisted of; Turkey, Ham, Roast beef, Candied Yams, Whipped Potatoes, and a vegetable. There were also many different entrees from which to choose.

Pictured above gathered around the Thanksgiving table well stocked with apples, grapes, oranges, and other assorted fruits are, from left to right, Mr. Ross, Porter, Earl, Don Pete, and Francis. There were of course many others who took part in the preparation of this meal that could not be shown. To all of you the BINNACLE extends its congratulations and thanks.



WEEKEND PARTIES

Weekend parties at Keema have really hit full swing. Every weekend they seem to get better. With successive parties there seems to be more: entertainment, refreshments and best of all more of the "gentle sex!"

Another outward sign of success is that at least half the attending Midshipmen are non-restricted. This shows the popular appeal of these affairs more than anything else.

Entertainment other than dancing has proven to be no problem. The Bader Johanson Duo and Ware's Combo have ably solved this problem from the local talent end, while movies and barbecues have also been featured.

Finally, a tip of the BINNACLE's hat to the girls of Mills College and St. Josephs School of Nursing, because let's face it, without them there'd - probably never be any parties!!!

STUDENT COUNCIL

The Student Council held its second meeting this year on Thursday, November 12. Among the many and varied topics discussed at this gathering were the following scoops released to the Council by Captain Richter.

a) As soon as the rains starts, all automobiles owned by Midshipmen will be allowed to be moved from: the present parking area to the black top behind the gym.

b) Recent removal of the foot- lockers from the after and forward berthing areas on the T.S.G.B. has brought about a drastic shortage of "parking room." Official Steps Will Be Taken.....

c) VERY OFFICIAL ---- Christmas Leave will commence on December 22nd, NO SOONER, but at least no later!! Steps are now being taken to provide

a longer, more convenient, Christmas leave next year.....

d) Chances look pretty good for revised cruise uniforms this year. Due to the extreme humidity we will undoubtedly encounter, it's quite possible that short sleeve, open-necked khaki shirts will, on occasion, be a prescribed uniform of the day.-- Late word indicates that the reason for no official word on this subject is that there is difficulty in ordering these shirts in time for cruise.

e) It has been proposed that new lists for necessary items for incoming Third Classmen next year be made up to include such items as shower clogs, plenty of matches, etc.

f) SCOOPS!!! Maritime Checks: will arrive!any day now...



Lt. Ch has probab varied and reers among tober 5,190 Pritch bega later, when tice seaman When t

Pritch was with the 1 landed on G an Ensign, caught up w about a year He was on and then we Service Scho an instructe 1943 he went time with t was Okinawa China to par surrender in

Pritch beca the Navy Dep Headquarters retired as a

Coming wax with the the operati Bay until 19 to C.M.A.

Pritch Josephine An The Pritch one 10, one not disclose Force Pilot.

WHO'S WHO

Lt. Charles Pritchett



Lt. Charles Pritchett or "Pritch" has probably had one of the most varied and interesting sea-going careers among our faculty. Born on October 5, 1903, in Union Springs, Alabama Pritch began his sea career 17 years later, when he enlisted as an apprentice seaman in 1920.

When the Second World War began Pritch was a Warrant Officer and was with the 1st Marine Division, which landed on Guadalcanal. Actually he was an Ensign, but his commission hadn't caught up with him yet, and it took about a year before it did reach him. He was on Guadalcanal for 128 days, and then went to the Field Medical Service School at Camp Lejune, N.C. as an instructor. In the latter part of 1943 he went back to Guadalcanal, this time with the 6th Marines. Then it was Okinawa and Guam, and on to North China to participate in the Chinese surrender in 1945. In January of 1946 Pritch became a liaison Officer between the Navy Department and Marine Corps Headquarters where he served until he retired as a Lieutenant in July, 1946.

Coming to the West Coast, Pritch was with the Maritime Commission, in the operations department at Suisun Bay until 1950, at which time he came to C.M.A.

Pritch married the former Miss Josephine Andreola in New York City. The Pritchetts have three daughters, one 10, one 12, and the oldest, (age not disclosed) is married to an Air Force Pilot.

Sub-Commander Going



"Every finger a marlinespike..."

In the summer of 1957 a salty young man came through the gates of C.M.A. and the Deck Department is still reeling from the shock dealt it by this years Battalion Sub-Com mander-- Jack Going.

Jack graduated from High School in 1954, then spent one year at Reed College in Portland, Oregon before joining the Sailors Union of the Pacific and shipping as an ordinary seaman in ships of the American President Line. Deciding that the sea was the life for him, He came to C.M.A. to study for his Third Mates exams. A true salt, Jack was greeted with open arms by the sailing club, and the Propeller Club, of which he is now president.

A real asset to any organization he is possessed with a seemingly endless supply of energy and can generally be found sailing or hanging from the rigging of the ship when not engaged in some duty with regard to his Battalion or Propeller Club posts.

Jack feels that the Midshipmen must realize that they are here for a reason, not just to exist and should, therefore, take an active interest in the Academy, trying to set high standards of conduct both in class and in public. The Academy needs to be held in high esteem by the industry before its goals can be achieved, and only the M/s can win this high professional opinion for the school. With this in mind they should govern their actions.

OUR GRATEFUL THANKS TO CAPTAIN TURPIN FOR THE COVER DESIGN ON THIS ISSUE OF THE BINNACLE

Miss Juanita Beasley

Last month you were able to thrill to the charms of Pat and Tascia. This month, however, we are going to show you the girl who would have won the competition with ease, had we not eliminated her from our contest. This rare beauty of whom we are speaking, belongs to Division 2's beloved leader Decki Dale.



Hailing from the tiny village of Nogoodbucktoothmammyjammer, Arkansas, she is a rather abnormal exceptionally smart girl educated at one of the better known universities (we still don't know exactly ourselves). She stands a little over 1½ meters and weighs around 97 stones. She has Carquinez blue eyes and forward engine room black smoke colored hair which is quite a coincidence because this is a rare combination. (to say the least)

Her likes include C.M.A., Decki Dale, (she told us this while blushing profusely) She also likes the parties we have here and she tells us that she is just a plain Keema type girl who really goes for Middies. Her favorite color is zinc chromate green, and her favorite song is "Heave Ho."

Her big moment came when she was elected Queen of the Beast Ball which was held here a few years ago.

She intends to wait for Cadet(?) then get married and maybe raise a crew of her own someday.

Having conducted a very intensive survey of the results of previous examinations, the BINNACLE staff would like to offer it's predictions as to the outcome of what we will call, the typical Final Exam.

2%	Passed
39½%	Failed
18%	Were in the wrong room
12%	Fell asleep during True-False Questions
10%	Forgot to bring a pencil
8%	Asked to leave the room and never came back
6%	Didn't know who Veronica Lake was
3%	Made paper airplanes out of the test
2%	Are still working on it
½%	Thought it was funny

Total 101% (Some wise guy handed in two papers)

THE INDUSTRY

DECK:

QUESTION: What is the usual method of attaching the bitter end of the anchor chain in the chain locker?

QUESTION: On the sheet of questions for Third Mate's license examination, it is required to find the volume of a cone. The example given in the latest Specimen Examinations, is a cone 30 ft. high whose base is 40 ft. in diameter. How would you find the volume? What is the volume?

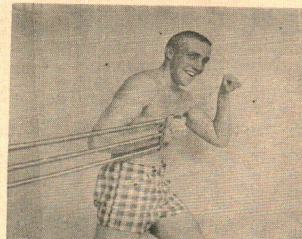
ENGINEERING:

QUESTION: During periods in which the main propulsion geared-turbine is secured for more than one day good engineering practice requires that turning gear be operated to the extent that there is the following number of propeller revolutions:

A. 1½; B. 1; C. 10; D. None of these.

QUESTION: The clearance volume of a reciprocating steam engine is the volume between the piston and the end of the stroke and the adjacent cylinder cover and does not include the volume of the steam port up to the face of the valve. Answers on P. 7

ADVERTISEMENT



You have all seen Ads from various "strong-men" claiming that they "can turn a 97lb weakling into a 187 lb weakling in 3 months" etc. We here at Keema are fortunate to have among us one of the foremost authorities on good health, strength etc. M/s William Schiller, better known to his "fans, out there in TV land," as Larry Onox, can usually be found between the time of 1600 and 1800 either "lifting in a prominent corner of the gym or catching 40 (strength producing) winks on the deck of his room.

Larry's biggest claim to fame is that he has been able to interest all types of people in his program. There are girls from Vancouver to the city of San Francisco wondering what they ever saw in Vic Tanny. His slogan is "I can put 20 lbs of bristling muscle on your bod."

VARSITY

It appeared that the winning team of So far the Bas...

The first was a fairly good with the Middie of 56-43. For cordia came a defeat. The s...

On the e a large, lo witnessed wha of the seaso of Jerry Robe high scorers, close one to

Last Tue a group of Vallejo. Alth in favor of V be called a m the previous BINNACLE will run down of e you get out a

In bowl walked away as they did up a total to 15½ scored teams. Divis second place for each team place honors

ANSWER: The a ends shall be locker. Heavy provided in w The fastenini of each chain pin which will not injure th in case the a and the chain pin shall be side of the c end fitting s tight with a er-end castin

ANSWER: Formu 3 Therefore vol o

STRY

usual method of end of the an-a locker?

of questions se examination, the volume of given in the ations, is a base is 40 ft. you find the lume?

s in which the ed-turbine is one day good requires that ted to the ex-folowing num-ations: None of these. volume of a gine is the n and the end- jacent cylin-include the rt up to the ers on P. 7

ads from var- g that they- into a 187 etc. We here have among thorities on . M/s William his "fans, Larry Onox, een the time lifting in a ym or catch- g) winks on

a to fame is interest all gram. There o the city what they slogan is ling muscle

VARSITY BASKETBALL

It appears that C.M.A. may have a winning team on its hands this year. So far the Basketball team has a record of 3 and 2 for the season.

The first game, against Armstrong was a fairly even game which ended with the Middies winning by a score of 56-43. For the second game, Concordia came aboard, but also left in defeat. The score 71 - 51.

On the eve of Thanksgiving leave a large, loud crowd of Midshipmen witnessed what might be the best game of the season. Hampered by the loss of Jerry Roberts, one of the usual high scorers, the team lost a real close one to Alameda, 66 - 63.

Last Tuesday night the team and a group of routers travelled to Vallejo. Although the score was 63-59 in favor of Vallejo, this might well be called a moral victory in view of the previous scores in this game. The BINNACLE will continue to give you a run down of each game, but why don't you get out and see some yourself.

In bowling, Division 7 again walked away with undisputed honors, as they did in football. They racked up a total of 21½ points as compared to 15½ scored by the second place teams. Divisions 5 and 3 tied for second place honors with 15½ points for each team. Division 6 took third place honors with 14½ points.

Deck

ANSWER: The attachments of the bitter ends shall be near the top of the locker. Heavy reinforcements shall be provided in way of the attachments. The fastenings at the bitter end of each chain must be fastened with a pin which will carry away in shear and not injure the chain locker structure in case the anchor should take charge and the chain completely run out. The pin shall be accessible from the outside of the chain locker. The bitter end fitting shall be completely water tight with a gasket between the bitter-end casting and cover plate.

ANSWER: Formula for volume of a cone:
 $3.1416 \dots r^2 h/3$
 Therefore volume is $3.1416 \times 16 \times 20^2 \times 30/3$
 or 12,650 cu ft.

SPORTS

Water Polo Season Closes

The C.M.A. Water Polo team had a little tough luck this season coming through with a 0 - 9 record. Mr. James Thwing explains that the reason for their poor showing is inexperience and lack of practice time. Many of the key players were on Academic Restriction. Tom Delacy who was counted on to lead the team and who has done so in four of the games, has been among those plagued by "A.R." The only experienced players who did play the entire season, were letter-men Bob Moore and Tony Pittsey.

A number of the 3rd class have shown considerable promise and are counted on for next year. High scorer for the season was Scott Stratton who scored 16 points. The team's best all-around swimmer is Doug Finley who has played in all but four quarters during the season. In the shallow end of the pool, Mike McCutcheon has done an outstanding job as goalie.

Mr. Thwing states, "We are looking forward to a much better season next year, due to the experience gained in this season."

Intramurals

Besides taking first place honors, Division 7 also tallied up the highest three game series with a total of 1859 pins.

In the individual scoring, M/S Duffy bowled the highest individual game with a score of 231. M/S Memeni had the best three game series with a score of 522.

Answers from P. 6

Engine

ANSWER: By rotating the propeller a fractional number of revolution it is unlikely that all rotors, and shafts will always come to rest in the same position.

ANSWER: False. Clearance volume includes the volume of the steam port up to the face of the valve.

0640 Lament

As the rays of dawn are spreading, comes a fellow everyone knows.

It's the old Duty Officer, rousing Middies wherever he goes

VARSITY BASKETBALL

Water Polo Season Closes

usual method of
ad of the an-
locker?
of questions
examination,
he volume of
given in the
tions, is a
ase is 40 ft.
ou find the
ume?

in which the
d-turbine is
one day good
requires that
ed to the ex-
llowing num-
ions:
me of these.
volume of a
ine is the
and the end
acent cylin-
nclude the
up to the
s on P. 7

It appears that C.M.A. may have a winning team on its hands this year. So far the Basketball team has a record of 3 and 2 for the season.

The first game, against Armstrong was a fairly even game which ended with the Middies winning by a score of 56-43. For the second game, Concordia came aboard, but also left in defeat. The score 71 - 51.

On the eve of Thanksgiving leave a large, loud crowd of Midshipmen witnessed what might be the best game of the season. Hampered by the loss of Jerry Roberts, one of the usual high scorers, the team lost a real close one to Alameda, 66 - 63.

Last Tuesday night the team and a group of routers travelled to Vallejo. Although the score was 63-59 in favor of Vallejo, this might well be called a moral victory in view of the previous scores in this game. The BINNACLE will continue to give you a run down of each game, but why don't you get out and see some yourself.

Intramurals

In bowling, Division 7 again walked away with undisputed honors, as they did in football. They racked up a total of 21½ points as compared to 15½ scored by the second place teams. Divisions 5 and 3 tied for second place honors with 15½ points for each team. Division 6 took third place honors with 14½ points.

The C.M.A. Water Polo team had a little tough luck this season coming through with a 0 - 9 record. Mr. James Thwing explains that the reason for their poor showing is inexperience and lack of practice time. Many of the key players were on Academic Restriction. Tom Delacy who was counted on to lead the team and who has done so in four of the games, has been among those plagued by "A.R." The only experienced players who did play the entire season, were lettermen Bob Moore and Tony Pittsey.

A number of the 3rd class have shown considerable promise and are counted on for next year. High scorer for the season was Scott Stratton who scored 16 points. The team's best all-around swimmer is Doug Finley who has played in all but four quarters during the season. In the shallow end of the pool, Mike McCutcheon has done an outstanding job as goalie.

Mr. Thwing states, "We are looking forward to a much better season next year, due to the experience gained in this season."

Besides taking first place honors, Division 7 also tallied up the highest three game series with a total of 1859 pins.

In the individual scoring, M/S Duffy bowled the highest individual game with a score of 231. M/S Memeni had the best three game series with a score of 522.

Deck

Answers from P. 6

ANSWER: The attachments of the bitter ends shall be near the top of the locker. Heavy reinforcements shall be provided in way of the attachments. The fastenings at the bitter end of each chain must be fastened with a pin which will carry away in shear and not injure the chain locker structure in case the anchor should take charge and the chain completely run out. The pin shall be accessible from the outside of the chain locker. The bitter end fitting shall be completely water tight with a gasket between the bitter-end casting and cover plate.

ANSWER: Formula for volume of a cone:
$$3.1416 \dots r^2 h / 3$$

Therefore volume is $3.1416 \times 16 \times 20^2 \times 30 / 3$
or 12,650 cu ft.

Engine

ANSWER: By rotating the propeller a fractional number of revolution it is unlikely that all rotors, and shafts will always come to rest in the same position.

ANSWER: False. Clearance volume includes the volume of the steam port up to the face of the valve.

0640 Lament

As the rays of dawn are spreading,
comes a fellow everyone knows.

It's the old Duty Officer,
rousing Middies wherever he goes

FROM M/s _____

CALIFORNIA MARITIME ACADEMY

VALLEJO, CALIFORNIA

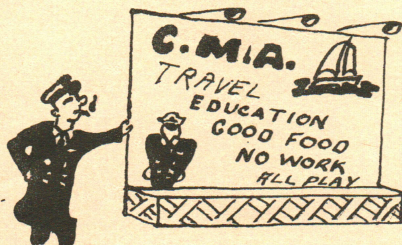
4g

CHRISTMAS DANCE



12 Dec. 9 to 1 free

Cocktail Dresses or
Semi-Formal and
Blues



YOUR nose RESHAPED

Do people mistake you for a Pontiac?
Do you stick your nose in other people's
business, from across the street?

Why suffer?

Secret new method shortens your beak
in less than a week, so why be a freak!

SEND FOR FREE CATALOGUE!
Pick your nose!
SHORTER SHORTER SYSTEM
Great Lakes Nasal Station
Deviated Septum, Georgia.