



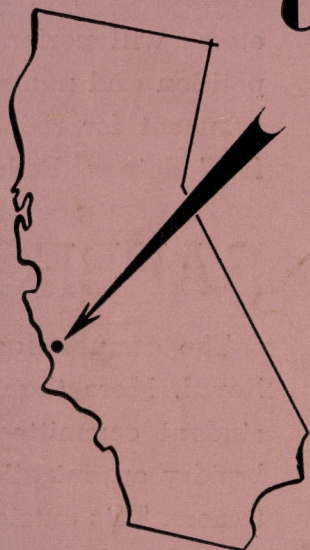
P
O
L
Y

R
O
Y
A
L

CALIFORNIA STATE POLYTECHNIC COLLEGE BULLETIN

Come To San Luis Obispo

April 25-26, 1952



20th
ANNUAL

April

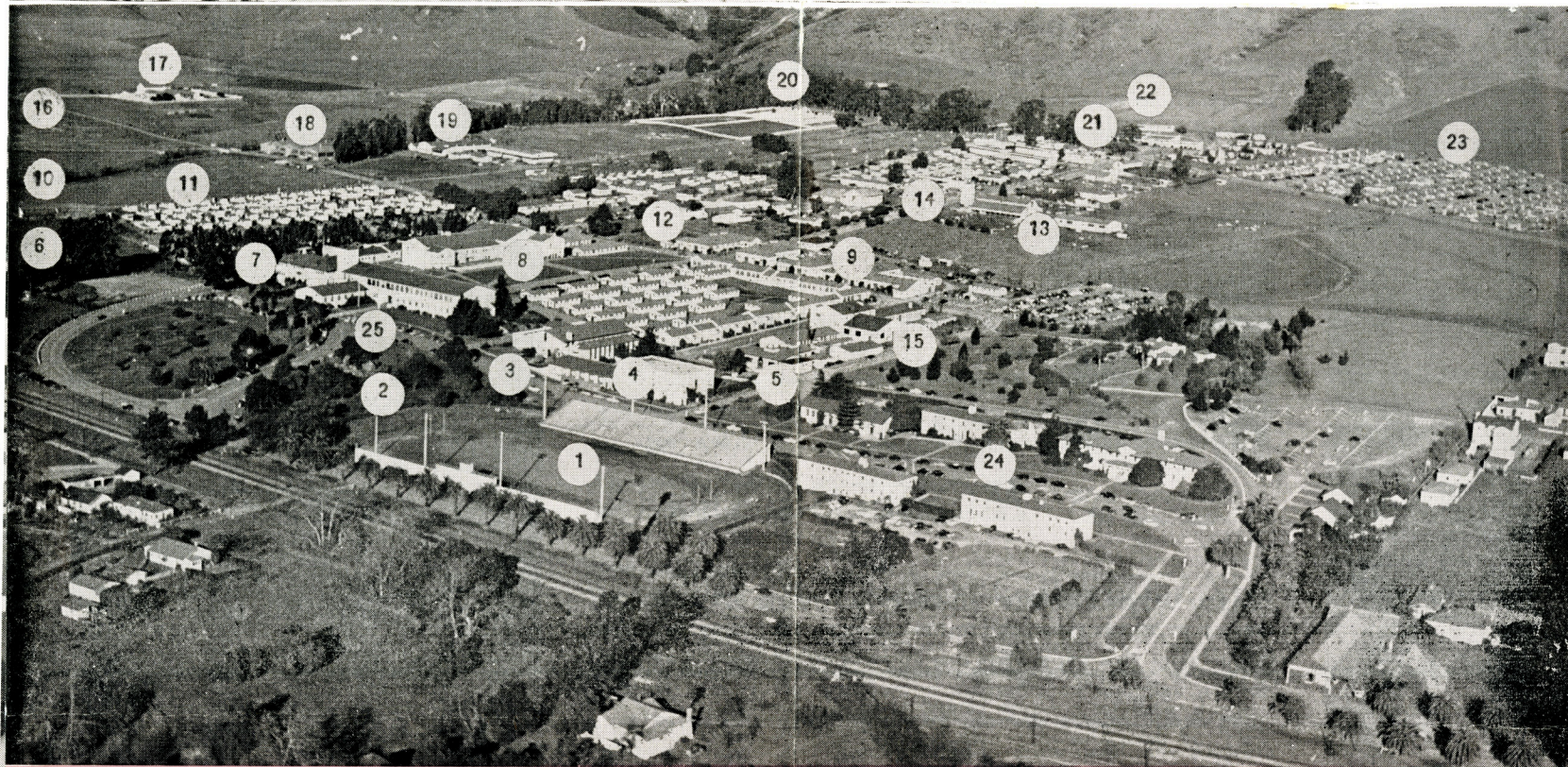
25 - 26
1952

Series 32, No. 1

March, 1952

Published Quarterly

Published by California State Polytechnic College at San Luis Obispo, California. Entered as second-class matter, August 9, 1918, at the post office of San Luis Obispo, California, under Act of August 24, 1912.



Campus Directions: 1 Football Field; 2 Barbecue Grounds; 3 Gymnasium; 4 Natatorium; 5 Power House; 6 Baseball Field and Track; 7 Ag Education and Electronics; 8 Library; 9 Aero & Welding Shops; 10 West—to Sheep & Hog Units; 11 Vetville; 12 Poultry and Horticulture;

13 Dairy; 14 Horseshoeing; 15 Engineering Building; 16 West—to Air Strip & Rodeo arena; 17 Beef Units; 18 Farm Machinery; 19 Machine Shop & Ag Mechanics; 20 Thoroughbred Horses; 21 Architecture; 22 Hillcrest Lounge; 23 Poly View Trailers; 24 Dormitory Row; 25 Adm Bldg.

POLY ROYAL

San Luis Obispo, heart of the mission trails, is located on California's highway 101, mid-way between Los Angeles and San Francisco. Poly Royal visitors from southern and northern areas will find this picturesque route one of fantasy. Lashing ocean waves scarcely a stone's throw from modern highways, green carpeted hillsides and lush farming lands form long-remembered pictures. The weekend of April 25 and 26 is an ideal time to make this trip into the central coastal section of California. An all-season resort region, San Luis Obispo provides its visitors with many hotel, motor court and trailer court facilities. Visitors are advised to get reservations in as soon as possible.

Cal Poly, with campuses at San Luis Obispo, San Dimas and Pomona, is one of California's ten state colleges. It grants the Bachelor of Science degree for completion of the four-year curriculum in any of twenty-eight major departments in three divisions—agriculture, engineering and liberal arts. It also grants the degree of Master of Arts in Education.

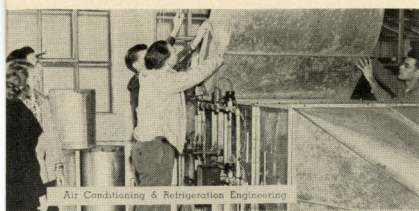
With the coming of Poly Royal, Cal Poly's show window of progress is officially unveiled. Exhibits of every conceivable nature are placed on display. Representing nearly every one of Poly's 28 major departments of study in agriculture, engineering and liberal arts, educational exhibits vie with other entertainment features for the visitors' attention. The "country fair on a college campus" affords opportunity for taxpayers to observe, first hand, Cal Poly's down to earth, practical system of instruction that has made it a nationally-recognized pioneer in occupational training.

Cal Poly's southern branch—Kellogg-Voorhis unit—celebrates a similar open house, called Poly Vue on April 19 and 20. The two-day affair annually attracts some 5,000 southern visitors interested in what Cal Poly is doing to further education. Special events, an Arabian horse show, coronation ball, exhibits and contests combine efforts in providing entertainment for all age groups.

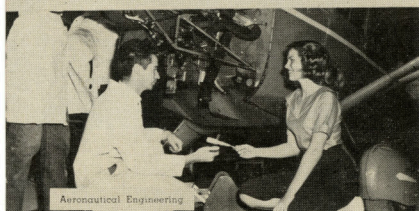
20th ANNUAL

April 25 - 26 1952

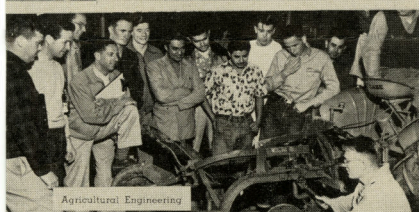
A Preview of Our "Country Fair On a College Campus"



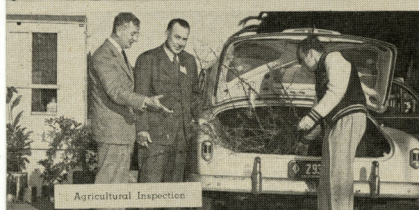
Air Conditioning & Refrigeration Engineering



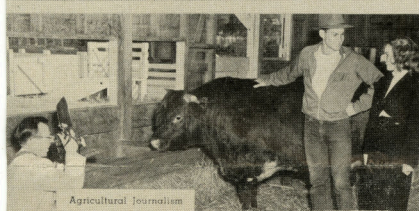
Aeronautical Engineering



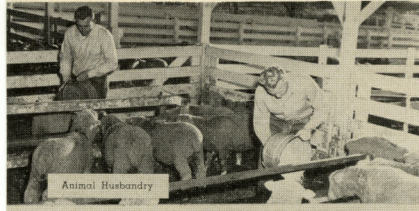
Agricultural Engineering



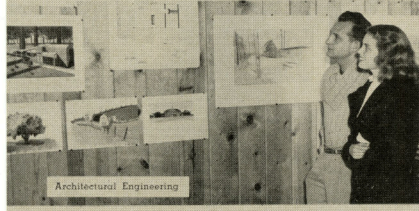
Agricultural Inspection



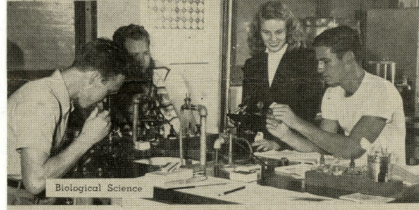
Agricultural Journalism



Animal Husbandry



Architectural Engineering



Biological Science



Crops and Fruit Production

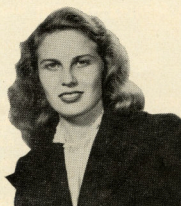


Dairy Husbandry & Manufacturing

HER HIGHNESS

Overseeing the 1952 Poly Royal is a major task for pretty Geraldine Cox, Santa Barbara college coed and Queen ruler of Cal Poly's all-male domain.

Here Queen Gerry obligingly leads us on an invitational tour of things we'll be seeing and hearing about during this year's "country fair on a college campus," April 25-26.



Queen Geraldine Cox
Santa Barbara College

UNIQUE OPEN HOUSE

One of the nation's free-est fairs, and one of the largest planned and produced by college students, Poly Royal is unique as a show window of educational progress. More than 2000 students from 28 departments in the three divisions of Agriculture, Engineering, and Liberal Arts join in inviting their relatives, friends, and the general public to enjoy two days of fun with them and to see how the college's down-to-earth, practical system of instruction has made Cal Poly a nationally-recognized pioneer in occupational training.

VENTER'S SHOW

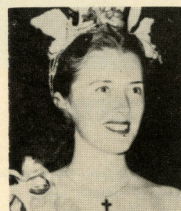
Mel Venter's "Breakfast Gang" program will be aired over the entire Don Lee Network of Pacific Coast stations, stemming from an on-campus performance, Friday afternoon at 4:30 p. m. in Crandall gym. Admission is free. Friday evening Lyle Bardo's "Breakfast Gang" orchestra will play for the Carnival dance in the gym. The dance will be broadcast over the Mutual network as far east as Chicago.

SPORTS GALORE

Poly Royal officials followed an old-favorite recipe in cooking up the 1952 athletic offerings. Attempting to entice sports-minded visitors with hearty appetites for good athletics, they've included such events as soccer, baseball, swimming, track meets and motorcycle circuses on the royal menu. Highlight of the affair will be the Fourth Annual Poly Royal Relays, expected to attract some 200 individual performers. See program for detailed times and places.

CORONATION CAPER

Bringing to a formal close another "country fair on a college campus" will be the Coronation Ball, Saturday evening at 9 p. m. This year's event will be held in San Luis Obispo's Veterans Memorial Hall. Queen Geraldine Cox, Santa Barbara college, will be crowned queen of the fair by Gloria Demers, San Diego State, who reigned over last year's celebration. The spectacular ball is expected to attract some 3000 couples.



Queen Gloria Demers
San Diego State

COUNTRY FAIR CARNIVAL

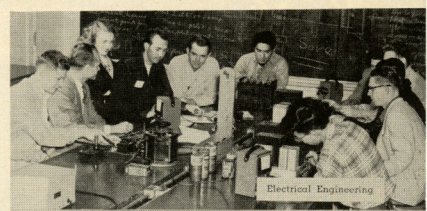
Kids, whether they be one or one-hundred, will enjoy Poly Royal's Carnival. Growing more popular each year, the show promises to provide a load of gayety and fun for those participating. Run by student organizations, proceeds from the concessions and booths go toward a new Student Union building on campus.

INTERCOLLEGIATE RODEO

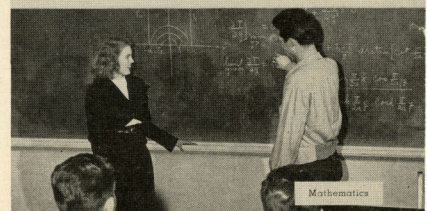
Another Poly Royal first is the National Inter-Collegiate rodeo, starting at 2 p. m., Saturday, at which top-ranking collegiate etams will perform. Bull riding, calf roping, cutting horse competition and numerous thrilling events promise wholesome entertainment for rodeo followers. Don't miss this exciting "country fair" doings. Rodeo finals are scheduled for Sunday, April 27.

BARBECUE POLY STYLE

The annual barbecue has become a traditional part of Poly Royal. More than 5,000 pounds of choice beef, prepared by a student committee from Boots and Spurs, college animal husbandry organization, will serve an expected 5,000 barbecue customers. This outstanding event, looked upon with favor by chuck wagon enthusiasts, will begin at 11 a. m. Saturday, near Poly Grove. Follow the crowd.



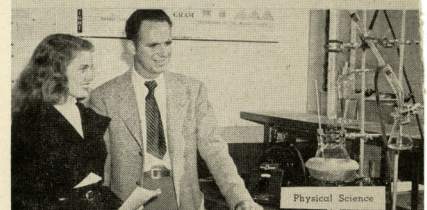
Electrical Engineering



Mathematics



Ornamental Horticulture



Physical Science



Poultry Husbandry



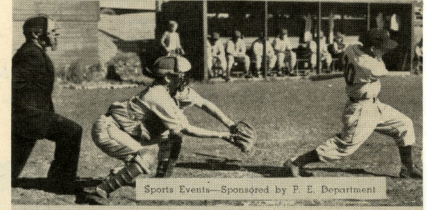
Social Science



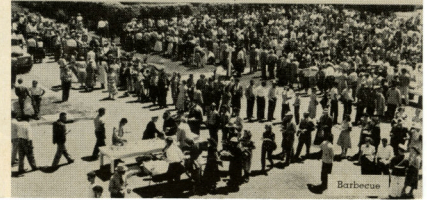
Soil Science



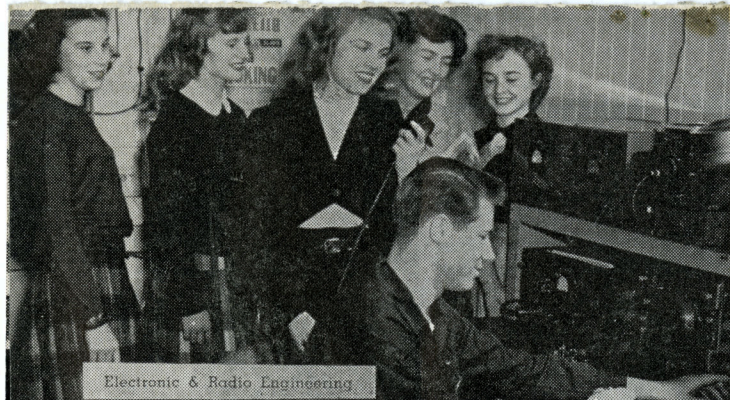
Music



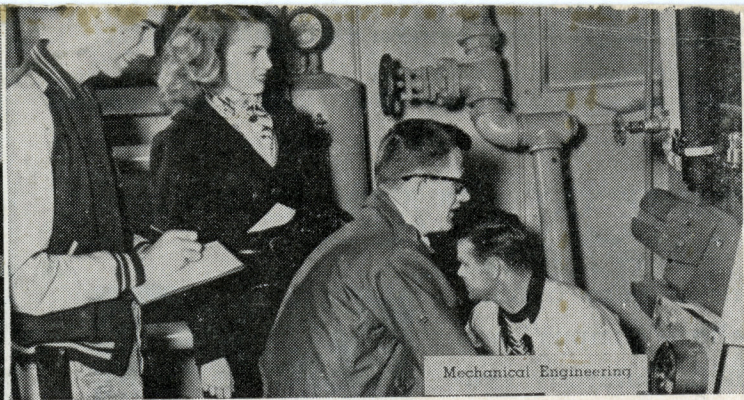
Sports Events—Sponsored by P. E. Department



Barbecue



Electronic & Radio Engineering



Mechanical Engineering

PROGRAM OF EVENTS

THURSDAY, APRIL 24

1:00 p.m. Student Body Meets the Queen—Southern Pacific Station—Parade to College.

8:00 p.m. Reception for Queen and Princesses at Hillcrest Lounge.

FRIDAY, APRIL 25

10:00 a.m. Opening Assembly at Football Stadium.

11:00 a.m. Departmental Exhibits open at Respective Units.
Soccer Game at New Athletic Field.

1:00 p.m. Reception for Mel Venter Breakfast Gang at Southern Pacific Station.

1:30 p.m. Exhibits Open in all Divisions. Judging of Agricultural Exhibits. Poultry—Classroom 19; Livestock—Classroom 17; Flower Show—Classroom 17; Crops and Fruits—Classroom 18 and 20.

1:45 p.m. Motorcycle Circus near Farm Machinery Building, South of Air Strip.

2:00 p.m. Baseball Track Meet—Baseball Diamond. Baseball Game—Cal Poly vs. San Francisco State.

3:00 p.m. Farm Equipment Demonstration—South of Air Strip. Swimming Meet—Cal Poly vs. San Francisco State—Natatorium.

4:30 p.m. Mel Venter Breakfast Gang Program—Gym.

7:00 p.m. Poly Royal Carnival—State Street.

9:00 p.m. Country Fair Dance—Gym—Lyle Bardo's Breakfast Gang Orchestra.

SATURDAY, APRIL 26

9:00 a.m. Day Nursery Open for Children
to at

5:30 p.m. Hillcrest Lounge.

9:00 a.m. Engineering Exhibits Open, Liberal Arts Exhibits Open; Final Judging Livestock Exhibits—Football Stadium.

10:00 a.m. Adult Organization Livestock Judging Contest—Football Stadium; Young Farmers Livestock Judging Contest—Football Stadium; Ladies Nail Driving Contest—Football Stadium.

11:00 a.m. Barbecue Served near Poly Grove.

12:00 noon Band Concert in Front of Administration Bldg.

1:30 p.m. Fourth Annual Poly Royal Relays—New Athletic Field.

2:00 p.m. First Annual Poly Royal National Intercollegiate Rodeo—Rodeo Grounds.

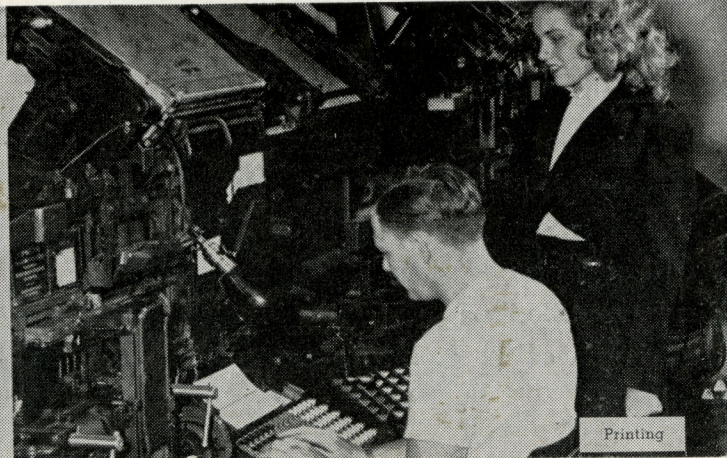
9:00 p.m. Poly Royal Coronation Ball—Veterans' Memorial Building, San Luis Obispo.

SUNDAY, APRIL 27

2:00 p.m. First Annual Poly Royal National Inter-Collegiate Rodeo—Rodeo Grounds.



Inter-Collegiate Rodeo



Printing