



Operations, Planning, and Construction

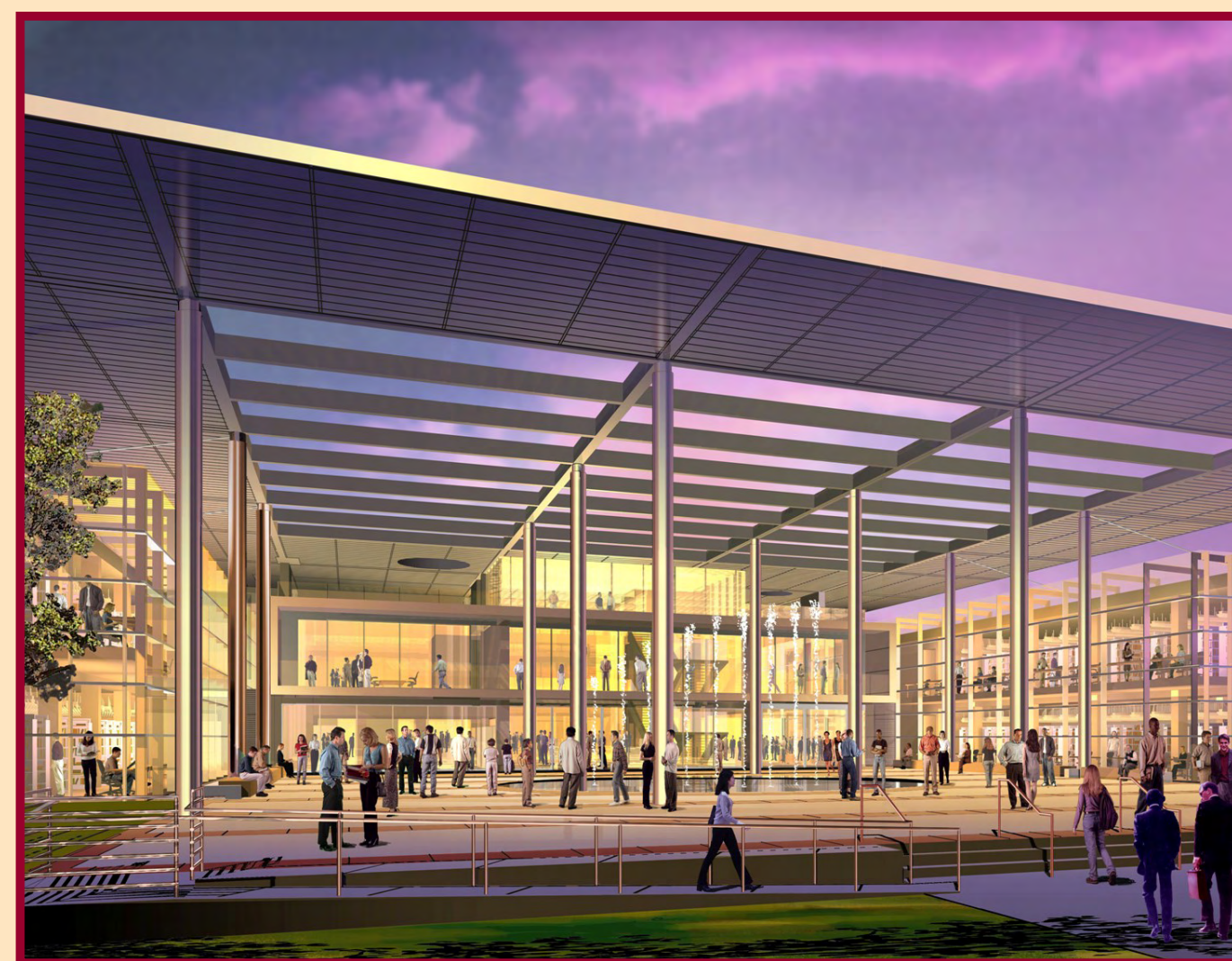
# CAPITAL CONSTRUCTION

Presented By:

Deborah Wylie, David Carlson

## Broome Library

The Broome Library is designed by Lord Norman Foster, of London. This dynamic design was made possible by a generous gift from John Spoor Broome. The Broome Library contains approximately 135,000 sq.ft. of building area, merging new construction with existing structures. The project will house traditional book stages, as well as the electronic collection, and provide for multiple methods of learning including group study; classrooms; computer labs; conference and gallery space. In addition University Writing and Learning Centers will be located in the Broome Library. Design build team of PCL Construction and Gruen Associates Architects. Occupancy January 2008.



## Santa Cruz Village

Santa Cruz Village is the second phase of housing, adding 450 beds in suites, to the 350 beds in apartments provided by Anacapa Village. Santa Cruz provides a freshman experience

with numerous public spaces including a community room, computer labs, group study rooms, fitness room, game room, and several music practice rooms. It is a

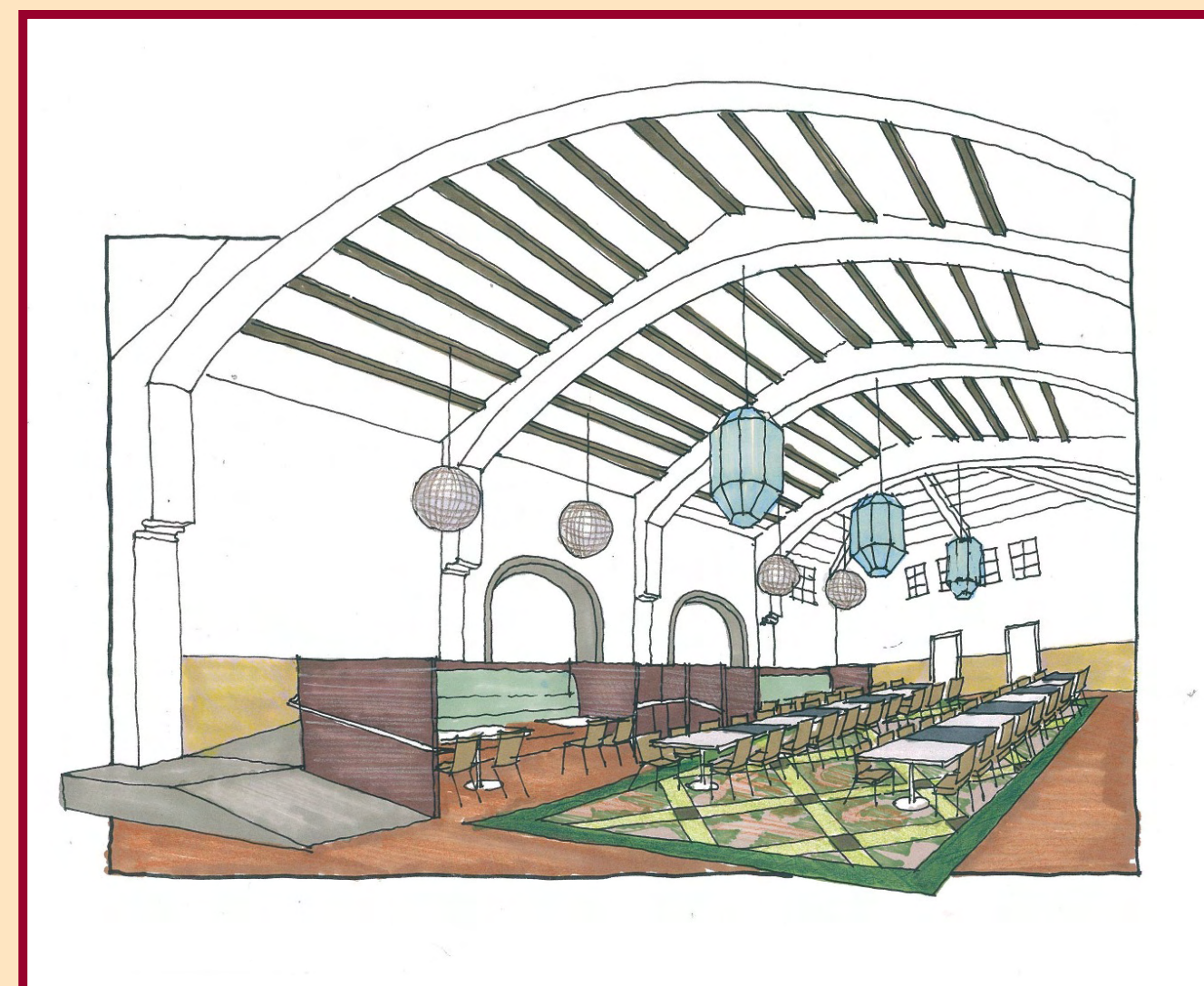
wonderful mix of new construction and renovation, retaining the character of the 1930s buildings, and enhanced by the retention of many mature trees. Completion August 2007, Corcoran & Corcoran Architects, HMM Construction.



## Islands Café



Islands Café opened for full service just two years ago and quickly reached capacity. Renovation is underway to provide additional servery and dining space in time for the Fall 2007 opening of Santa Cruz Village. The space most recently used as a community ballet studio will provide increased seating with a contemporary and exciting decor. Existing motifs have been adapted and seating includes booths, banquettes, tables, cyber cafe, and TV lounge. The design was created by WWCOT, also selected to design the Student Union.



## Other Projects:

- Smith Decision Center
- Campus Infrastructure Project
- North Hall and Nursing Simulation Lab
- New Entry Road
- Bell Tower East 2nd Floor Faculty Office Renovation