

Academic Senate Minutes
January 31, 2019
3:00 – 5:05, Ballrooms D & C

Abstract

Chair Report. Agenda – Approved. Minutes of 12/13/19 – Approved. Consent item: Faculty Eligible for Emeritus status – Approved. President Report. Provost Report. Vice Chair Report. President’s Climate Leadership Commitment Presentation. Discontinuance: Education concentration in TESOL – Approved. VP of Administration and Finance Report. VP of Student Affairs Report. Associated Students Report. Statewide Senator Report. Staff Rep Report. APARC Report. EPC Report. FSAC Report. SAC Report. CFA Report. Good of the Order

Present: Laura Watt, Melinda Milligan, Carmen Works, Damien Wilson, Jeffrey Reeder, Catherine Nelson, Sam Brannen, Sakina Bryant, Carlos Torres, Ed Beebout, Kim Mieder, Florence Bouvet, Rajeev Virmani, Laura Krier, Isabella Kanaana, Mary Ellen Wilkosz, Adam Zigelbaum, Michelle Goman, Rick Luttmann, Hope Ortiz, Michael Balasek, Judy Sakaki, Lisa Vollendorf, Wm. Gregory Sawyer, Erma Jean Sims, John Dunstan, Fernando Mendoza, Arcelia Sandoval, Mark Perri, Jenn Lillig, Rita Premo, Ron Lopez

Absent: Melissa Garvin, David Horowitz

Proxies: Neil Markley for Joyce Lopes

Guests: Jerlena Griffin-Desta, Deborah Roberts, Paul Gullixson, Craig Dawson, Judith Ford, Claudia Luke, Katie Musick

Chair Report – L. Watt

L. Watt reported on the Faculty Retreat. She noted that a report about the retreat and the survey will be sent to all faculty during this semester. She said that, in her meetings with the President and Provost, they were discussing how to move forward and improve shared governance.

Approval of Agenda – Approved.

Minutes of 12/13/19 – Approved.

Consent item: Faculty Eligible for Emeritus status – Approved.

President Report – J. Sakaki

- President Sakaki introduced her new Chief of Staff, Jerlena Griffin-Desta.
- Governor Newsom is coming out strong in support of public education, but we are keeping in mind that the Governor’s budget is only a preliminary proposal and we will continue to advocate throughout the spring for strong funding to the CSU.

- SSU Police are investigating a reported rape that happened on Jan. 25.
- Offensive fliers were posted on campus on January 23. They were taken down immediately. President Sakaki will be re-affirming our collective commitment to inclusivity at SSU in her next campus update.
- President Sakaki congratulated Dean Ayala on his new position as CEO of Building Inland Achievement and Tammy Kenber on her new position at the Chancellor's Office.
- President Sakaki gave an update on a meeting she convened with faculty who had read names at prior commencements. She was appreciative of the chance to hear from the readers and learned a lot about the ways in which we could improve logistics at commencement. President Sakaki indicated she will decide about how to move forward within two weeks.

There was some discussion about name reading at commencement and it was generally agreed that the campus could do a better job and that faculty want to retain the role of name reading. A faculty member suggested that the notice that went out about the alleged rape focused too much on how not to be raped and said nothing about reminding people that rape is crime, date rape is a crime and putting something in someone's drink is a crime.

Provost Report – L. Vollendorf

- Leadership transitions and searches in the schools are underway. The School of Social Science dean search is launched. Provost Vollendorf is taking suggestions for possible interim deans for the School of Education and the School of Business and Economics. Please provide suggestions within the next week.
- FTES Update: Thank you to everyone on the campus—faculty and staff alike—for helping SSU meet our annual FTES target. It took an entire village this time, so thank you to all!
- Admissions update: We have received more than 18,000 applications to date. We anticipate 18,500 applications as a final tally within the next few weeks. We anticipate 2% enrollment growth funding in the system based on the Governor's preliminary budget. We therefore are aiming for 2% enrollment growth. Keep in mind that we came in about 2% under our enrollment target for 2018-19, so this really underscores the amazing work we did to make our FTES target in spite of being a little low on our target headcount. As part of our overall commitment to serving the region and to building out our transfer-serving status, we are engaged in an effort to remove transfer-level impaction. This will allow us to admit lower-division transfers and to get the word out that we want to serve transfers at SSU.

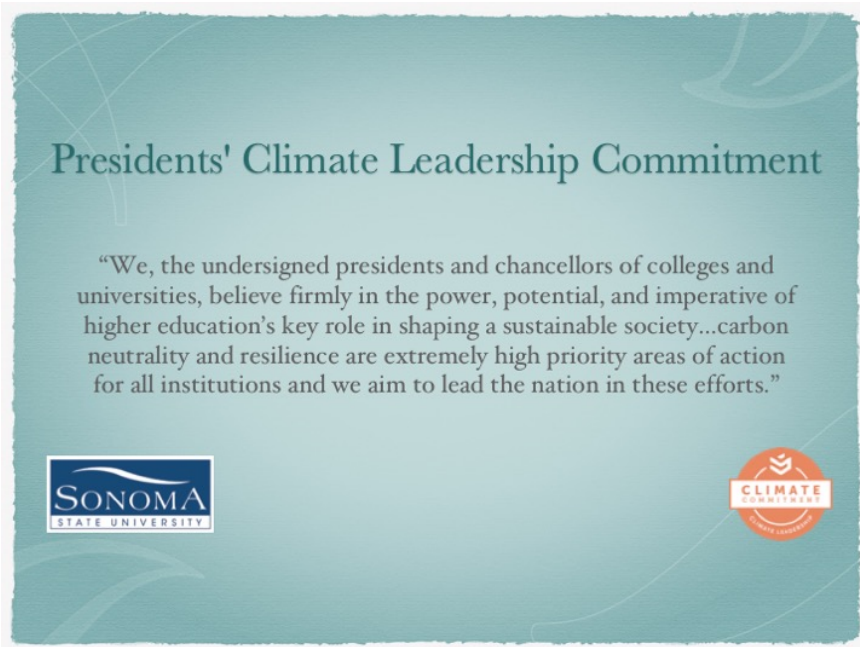
Vice Chair Report – M. Milligan

M. Milligan reported on the search committee election in progress. S&F has recommended faculty representatives for the Associate Dean position. She reminded members about the finalist for the Stevenson Remodel design/build who will be presenting on February 8th, 9-10th, 11-12th and 1-2nd in Schulz 3001. Anyone attending

all three presentations will be able to provide feedback. She encouraged anyone affected by the Stevenson remodel to send someone to attend all sessions.

President's Climate Leadership Commitment Presentation – M. Perri, J. Ford

M. Perri introduced the presentation. He noted that the Sustainability Executive Committee is working on the President's Climate Leadership Commitment. After the presentation, he would present a resolution requesting that the President sign the commitment.



J. Ford said that she, Claudia Luke and Craig Dawson were the working group on this project.

What is It?

- Campus-Wide Commitment
- Campus **Carbon** neutrality
- **Resilience** building with community
- Integration of sustainability and resilience into **Academic** curriculum, research and student experience
- Network of 600+ university signatories (16 of 23 CSUs); Chancellor White serves on Steering Committee
- Comprehensive Climate Action Plan Roadmap
 - Identifies and tracks goals
 - Role models, best practices, mentoring, funding & awards

Unique Protocol

- Only Higher Education
- Only Presidents Sign = Campus-Wide Commitment
- Bio-Regional Focus: Asset Mapping, Not Gap Analysis

Alignment of Mission

Presidents' Climate Leadership Commitment

"to mitigat(e) and **adapt** to a changing climate...(by) integrating **sustainability** into **education curriculum**, expanding research efforts and **public reporting**, creating and revising a (climate) action plan...based on **unique set of characteristics, future goals, existing capacity and strengths...Successful campus resilience...incorporate(s) diversity and inclusiveness** throughout the process."

Sonoma State

"Guided by our core values (which include **diversity, sustainability, community engagement** and **adaptability**)..., Sonoma State provides all students with a first-rate **education** through innovative programs that **leverage the economic, cultural, and natural resources of the North Bay.**" (Strategic Plan@2025)

Sustainability Learning Objectives (GE Reform)

Timeline

Within 1 Year

- Carbon: Complete and report baseline [Greenhouse Gas Inventory](#)

Within 2 Years

- Resilience: complete [Campus-Community Resilience Assessment](#)

Within 3 Years

- Academic: plan to incorporate sustainability & resilience
- Develop Climate Action Plan (CAP), Including:
 - Target dates for carbon neutrality
 - Interim target dates for meeting milestones
 - Mechanisms and indicators for tracking progress

Review and update CAP every 5 years thereafter

Proposed Campus Structure

Carbon Team

Sets carbon neutral targets (SB100 by 2045) & KPIs (ASSHE STARS Reporting)



Resilience Team

Creates targets & key indicators together with community to build resilience within five dimensions

Academic Team

Sets goals to weave sustainability & resilience into research and student experience

Academic Team

- Inventory sustainability and resiliency in curriculum, co-curriculum, and research
- Works with each school to identify what sustainability and resilience looks like in their respective fields
- Helps create long-term and interim goals and key performance indicators for self-identified goals
- Ensures agreement with CSU & SSU strategic and sustainability goals
- Creates resources and funding for activities and research: website, blog, interviews, awards

Some Faculty Working on Sustainability & Resilience

- Arts & Humanities: Scott Eberle, Nathan Heinlein, Claudia Holt, Justine Law, Alexis McNab, Jeffrey Reeder, Russ Scarola, Emily Seder, John Sullins
- Business & Economics: Sergio Canavati, Armand Gilinsky, Merlin Hanauer, Sandra Newton, Adele Santana, Renata Schaefer, Astha Sen, Elizabeth Stanny
- Education: Christina De Korsak, Elizabeth Jones, Lynne Lyle, Nanette Schonleber
- Science & Technology: Owen Anfinson, Lisa Bentley, Farid Farahmand, Derek Girman, Brendan Hammel-Bissell, Natalie Hobson, Melina Kozanitas, Nicole Myers, Mark Perri, Nathan Rank, Martha Shott, Wendy St. John, Laura Waters, Carmen Works
- Social Science: Jeff Baldwin, Maureen Buckley, Matt Clark, Vanessa Dodge, Michelle Goman, Jackie Guilford, Heidi Herrmann, Alex Hinds, John Isom, Tom Jacobson, Margie Purser, Emily Ray, Daniel Soto, Wendy St. John, Laura Watt, Thomas Whitley

Best Practices - CSU Champions

- [Assessing Resilience](#)
- [Chico State](#) (CAP)
- [Commitment Reporting](#)
- [Institute for Sustainable Development](#)
- [Sustainability Storyboard](#)
- [Cal State Northridge](#) (CAP)
- [Commitment Reporting](#)
- [Institute for Sustainability](#)
- [Resilient Northridge](#)
- [Humboldt State](#)

Questions: A member asked if the GMC would be exempt. J. Ford responded that the GMC would not be exempt. A member asked for clarification of the difference between sustainability and climate resilience. J. Ford said that sustainability is defined as being able to operate in such a way that allows you to continue what you are doing in perpetuity because nothing needs to go in or out of the system. Climate resilience is about surviving and thriving through change. A member asked how faculty could join in on the sustainability efforts. J. Ford said the teams have not

been built yet. C. Luke said faculty could contact her if they want to get started now. A member asked what the advantages are for signing. J. Ford said that we would join a club of others working towards the same goals. We could advertise that we are part of this commitment. We would have guidelines to follow and a measure of accountability as a result of joining this commitment. C. Dawson said the STARS reporting was starting to align with this commitment and that the STARS report was becoming a metric for the CSU. It also allows us access to best practices and the tools to help us achieve our goals. M. Perri noted that more funding might become available if we sign and that we would be a model for other organizations. C. Luke said that they were in the process now of gathering feedback on this initiative and that we were open to suggestions for other groups to visit.

Discontinuance: Education concentration in TESOL – First Reading – J. Lillig

J. Lillig introduced the item. Education was seeking to discontinue its TESOL concentration due to declining enrollments and competition from other schools in the area and those online. There are no remaining students in the program. SRJC commented that they understood the reason, but were sad to see a quality program go. EPC unanimously recommends discontinuance.

Motion to waive the first reading. Second. There was discussion about waiving the first reading. **Vote on waiving the first reading – 16 yes, 7 no.**

J. Lillig noted that Education will accept units from other schools to their program. Two members voiced support for the discontinuance. **Vote on discontinuance: Approved.**

VP of Administration and Finance Report - Neil Markley for Joyce Lopes

- We have three design build companies who will be finalists for the Stevenson project. They will be on campus Feb. 8 to present at an open forum in 3001 Schulz. Attendance is encouraged! After a firm is chosen and plans are finalized, October 2020 is the construction start date.
- Petaluma Project apartment building is still under construction. We got our Certificate of Occupancy today! (Hooray!) We still have a punch list to work through but we are getting close to being able to communicate with the campus about leasing. Hopefully next week we can communicate more about how to sign up for more information.
- Administration and Finance has draft goals on the strategic plan website so please provide feedback to VP Lopes if you have any.
- Kristi (Kat) Marian is our new Director of Design, Planning, and Construction.

A member asked about the relationship with unions on the construction projects. N. Markley said they are required to provide union wages for construction workers. The Petaluma project is being built by a private contractor and they are not required to use union workers or provide union wages. A member asked about the cost of the apartments at the Petaluma project as contrasted with rents in Petaluma. N. Markley said the low end of the apartments will be around \$1700 which is below market rate

in Petaluma. He noted they are not trying to make money on the project, just enough to keep it going. More pricing details will come out soon.

VP of Student Affairs Report – Wm. Gregory Sawyer

- Dr. Sawyer announced that 101 Academic Talent Search and Upward Bound students applied to and were admitted to SSU. In the past many of these students did not attend SSU but instead chose other campuses, so this is a big point of pride for us at SSU.
- Dr. Sawyer brought in a consultant to look at our student health services and CAPS to provide an overall assessment of student health services at SSU.
- We are proud that SSU was ranked by *Money* magazine as #12 in the nation for being a transfer-serving institution.
- *Diverse* magazine and ACPA (a Student Affairs organization) named SSU as one of the top programs in the country for the Division of Student Affairs as a site of promising practices in the nation.
- AVP of Student Affairs and Assistant Vice President positions have been posted for Student Affairs currently.

Associated Students Report – J. Dunstan

J. Dunstan reported that student government election nominations will open on Monday. They have a new process so that faculty or others can nominate students. It was clarified that students can also self-nominate.

Statewide Senator Report – J. Reeder

J. Reeder reported on the first statewide plenary of the semester. One of the items discussed in the committees was the relationship between faculty intellectual-property and the commercial website called Course Hero. It was decided, for a variety of reasons, that no action needed to be taken. An announcement was made that faculty computers will be remotely scanned for sensitive information or sensitive materials such as student Social Security numbers and student contact information. The CSU wants to make sure that people holding this kind of information have the appropriate confidentiality training. This process has been rolled out to four campuses already and will eventually be done statewide. Preliminary results from WestEd, an organization that has been looking at EO 1110 and surveyed CSU's for grade information from this past year and this past semester were presented. They were particularly looking at students who did not qualify for entry level math and looked at whether they did better by having remediation courses or whether they took credit bearing courses. The analysis found that students taking credit bearing courses and receiving at least a C grade were within one point of students who took remediation courses. The sample size was large, 7000, students, and they heard from 23 of the 24 campuses. West Ed was clear that they made no claims as to the quality of student learning or how students performed after this. He highlighted two resolutions that were passed at the plenary session: adoption of tenets of system-level governance in the California State University - <http://www.calstate.edu/acadsen/Records/Resolutions/2018->

[2019/Documents/3348.shtml](http://www.calstate.edu/acadsen/Records/Resolutions/2018-2019/Documents/3348.shtml) and a call for the inclusion of tuition in the Cal Grant B awards program for freshman students in the CSU - <http://www.calstate.edu/acadsen/Records/Resolutions/2018-2019/Documents/3350.shtml>. He reported that Chancellor White and Jennifer Eagan both addressed the Senate and everyone applauded the budget proposal from the Governor. The Chancellor reiterated how important it was to keep up the focus on maintaining the budget for CSU intact as it moves through the legislature. There was a report on student aid. Systemwide 85% of students receive some kind of financial aid. 49% graduate with no debt. Those who graduate with debt, are in debt \$17,000. They also had a report on tenure density and the density only went up .2% recently. At least, it was moving in the right direction.

A member asked whether faculty who bring in their own computers that may have sensitive information, would be scanned as well. J. Reeder responded that when our campus starts the process, that was something to keep in mind. A member asked for the vote breakdown on the Tenets document. C. Nelson said that they held a voice vote and it was clearly approved. What led to that outcome was that the Executive Committee added a clause to the resolution that provides guidance on how the expedited consultation process will be used. She discussed the guidelines. There was more discussion about Course Hero.

Staff Representative Report – A. Sandoval

A. Sandoval thanked the Academic Senate for inviting members of the Staff Council to the Faculty Retreat. We think this is a step in the right direction for shared governance. The next Staff Council meeting will be held on February 7th.

APARC Report – M. Perri

M. Perri reported that APARC heard a report about the potential change from Outlook to Gmail. He noted that the license for Outlook was running out. Moving to Gmail would be much less expensive to the campus. ATISS has been meeting with the CIO and they had not heard any negative feedback. APARC commented that there was email client functionality that Gmail does not seem to provide that Outlook does, and that the CIO will look into that. If faculty have an opinion about this change, they can email Mark. APARC met with Elias Lopez, Sean Johnson and Dennis Goss about scheduling modules. They want to reduce the number of classes that come back with no schedule. They asked the Scheduler to run a test on a previous semester to see if the approach they are thinking about would be effective. APARC talked about strategic budgeting with Laura Lupei. M. Perri recently sent out a survey to all faculty for input on strategic budgeting. Faculty have responded that they do not understand the assessment aspect of strategic budgeting. APARC will do more outreach to faculty. He voiced excitement about the upcoming website that would make available a lot of budget information. There was a discussion about the potential email switch and whether that decision had already been made or not. It was clarified that the decision had not been made yet. Concern was raised that not all faculty were aware of the potential email change. The Provost stated that BOX will no longer be paid for by the CSU. The CSU is already paying for the Google suite and we have not been using it to full advantage. We are out of step with best

practices for email. A member voiced concern about the potential unintended consequences for changing email. A member suggested an email go out to all of campus on these issues. A member asked how assessment for strategic budgeting would relate to departments. M. Perri said each School and Dean are different, so he wasn't sure how that would happen. The Provost provided some background on assessment for strategic budgeting.

EPC Report – J. Lillig

J. Lillig noted that she had emailed to the Senators all the GE documents and implored the members to read them all. She said the implementation document would be particularly helpful. GE is working on content specific criteria for B2 and E. These criteria would determine which area your course would be put into for GE. EPC is working hard on the GE revisions and is still in a second reading, discussing the definition of upper division GE. She encouraged the faculty to let go of what they think GE is based on a course they are teaching, and rather think about student learning and student graduation.

Motion to extend 5 minutes. Second. Approved.

FSAC Report – R. Premo

R. Premo reported FSAC continues to work in the Emeritus policy and are asking for the definition of a year of service. She contacted Department Chairs to send in revised RTP criteria to the Senate office by Monday. FSSP is working on changing its charge and name to reflect its work outside of sponsored programs. The call for nominations for the Excellence in Teaching Award will go out tomorrow or Monday.

SAC Report – R. Lopez

R. Lopez reported that SAC is making progress on updating their charge.

CFA Report – E. J. Sims

E. J. Sims referred the members to the CFA headlines. <https://www.calfac.org/cfa-headlines>. She said CFA was excited by the Governor's budget proposal. She praised the teacher's union in Los Angeles that went on strike and won their demands. She noted Oakland teachers are preparing for a similar strike. CFA is advocating for stronger protections for students of color.

Good of the Order

The Emeritus rep urged everyone to attend the annual Emeritus dinner on March 8th. It is a great opportunity to honor the new emeriti and meet with previous colleagues. <http://senate.sonoma.edu/events/emeritus-dinner>.

Adjourned.