

*Poly-Royal 1938*

*6th Annual*

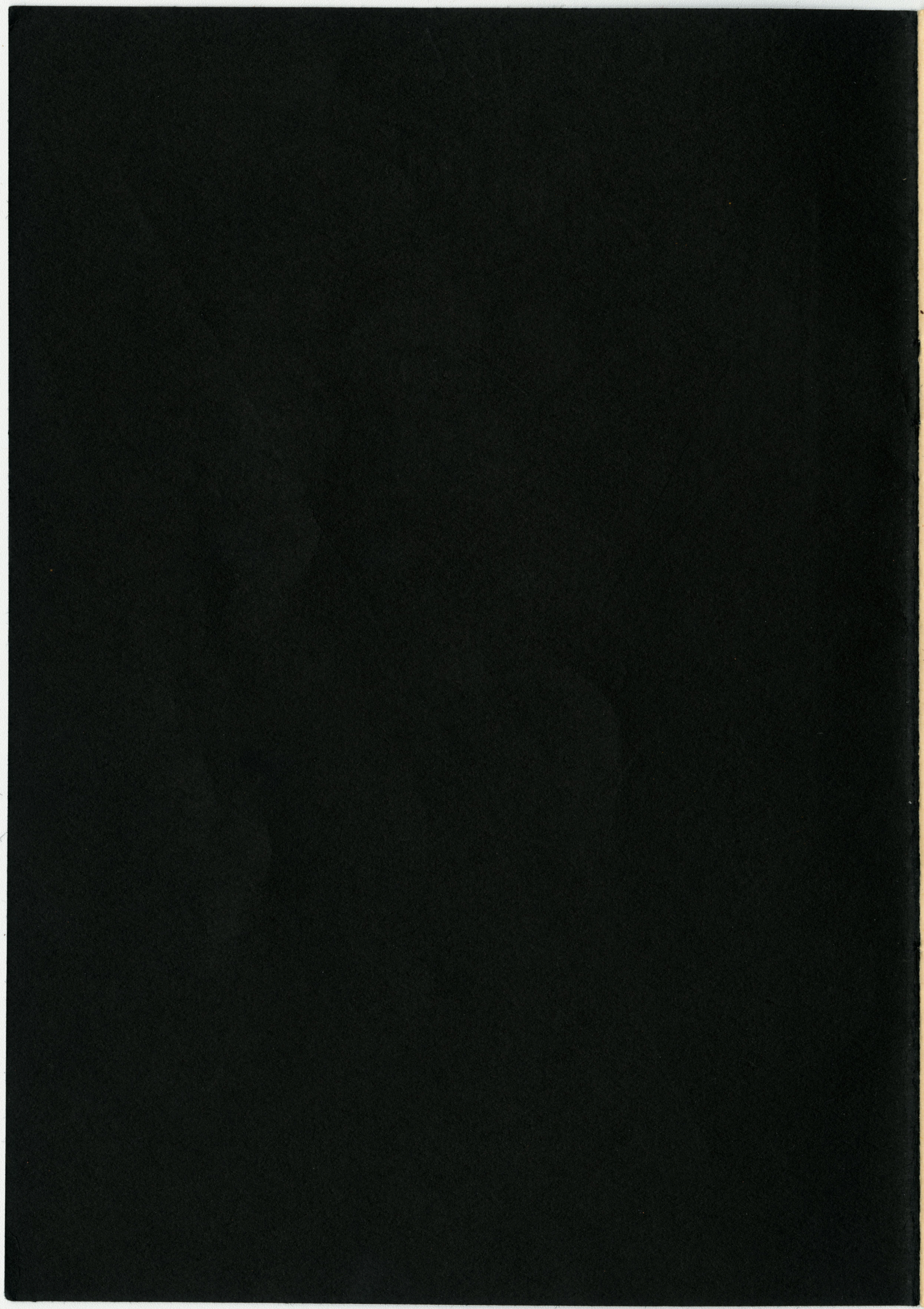
# POLY ROYAL

FOLLOW POLY'S PROGRESS



APRIL 1 & 2nd. 1938







*Poly Royal 1935-39*

Archives

# SIXTH ANNUAL POLY ROYAL

---

## FOREWORD

It becomes my privilege as general superintendent of the Sixth Annual Poly Royal to extend to the people of California a most cordial invitation to visit our college on April first and second. This institution is progressing rapidly. Our slogan "Follow Poly's Progress" best signifies the spirit of the occasion and the expansion of the California State Polytechnic. A number of new events have been added to this year's show. The new buildings have all been practically completed. For these reasons we feel that we have more to interest the public than ever before at Poly Royal.

One of the added features at the arena this year will be thirty minutes of trick and fancy shooting by Captain A. H. Hardy, one of the world's greatest marksmen. Another feature will be a Scotch Highland band in full regalia. These and many other added attractions will go along with the regular features of Poly Royal.

The students of California State Polytechnic are proud of this student managed show and will be glad to act as your hosts at Poly Royal.

Again, I wish to invite the people of California to visit their technical college and see our Sixth Annual Poly Royal on April first and second.

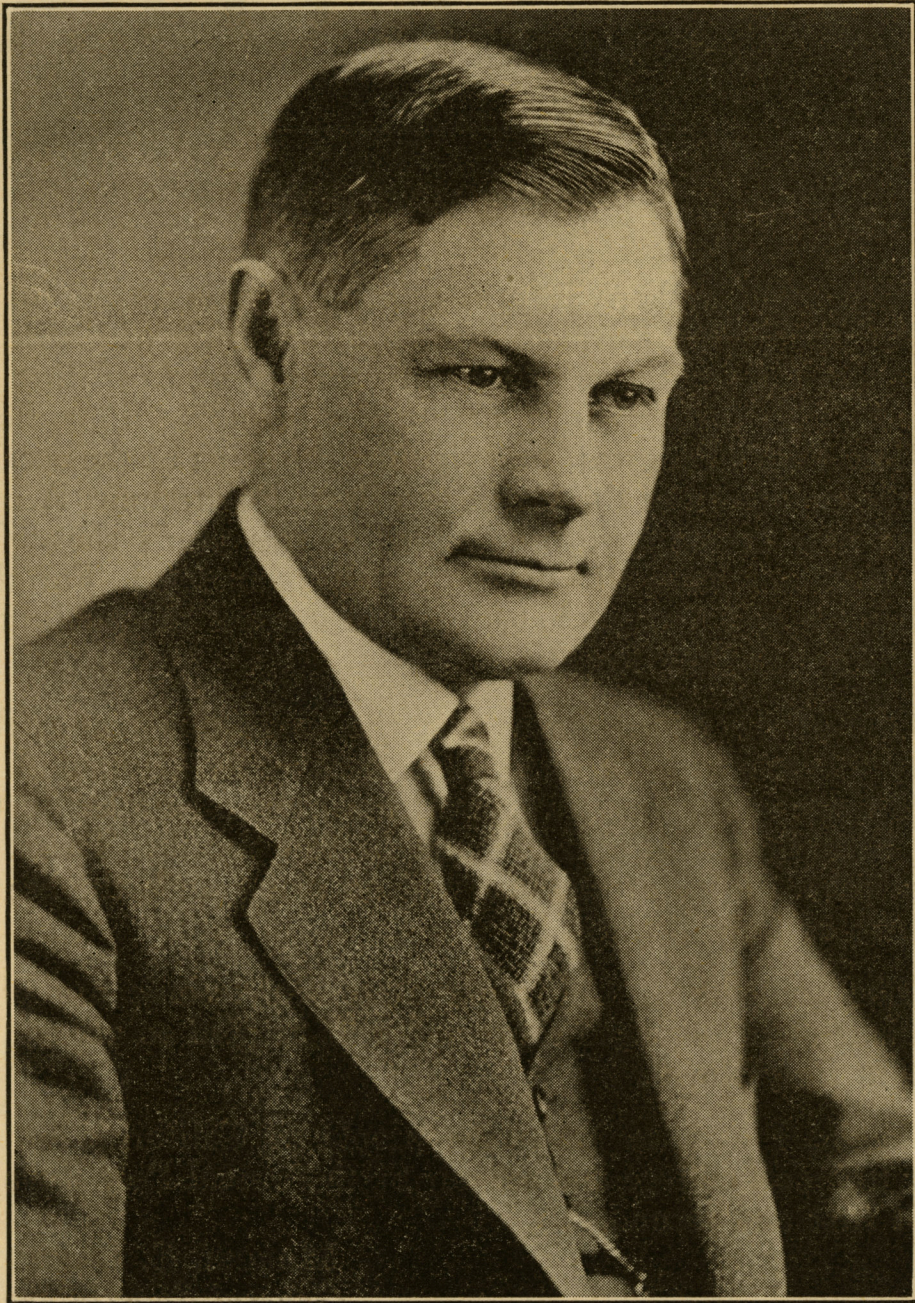
MARCEL E. LAYOUS,  
*General Superintendent.*

---

CALIFORNIA STATE POLYTECHNIC  
SAN LUIS OBISPO

APRIL 1-2, 1938





DR. WALTER F. DEXTER

*State Director of Education, and Superintendent of  
Public Instruction.*





CAL POLY'S NEW SWIMMING POOL

To the Students of California Polytechnic:

The fame of the Poly Royal livestock show and all-college open house, has spread to the four corners of the state. Your policy of entertaining your visitors by showing them how your schooling prepares you for the technical occupations of life, has built its own reputation.

I have not yet had an opportunity to get as well acquainted with you as I would like, but I want you to know that when you go into the livestock show ring, or carry on some industrial demonstration, you are representing California education. If you carry off your part creditably, education gains; if the public opinion is not increased, education loses.

My observation of your most interesting college is that if you really want to learn, you have an almost unlimited opportunity to learn. California Polytechnic is an institution in the formative stages, trying out a new concept of education. Results already obtained in terms of highly-skilled and straight-thinking graduates of whom employers are more than pleased, prove that the steps taken thus far are sound. Appreciating this, I hope you will take advantage of the opportunity to learn all you can, while you can.

May success attend each event of this Sixth Annual Poly Royal.

DR. WALTER F. DEXTER,

*State Director of Education, and Supt. of Public Instruction.*



Anthony G. Seal  
 Charles Atkins Howard Bally Jim Bloom  
 Bill Helphinstine Sixth Annual Poly Royal Leo Fitzgerald  
 Philip Coombs Theo. E. Topham Earl Poor  
 Andrew Witmer Norman Heikes



JULIAN A. MCPHEE  
 Director California State  
 Polytechnic

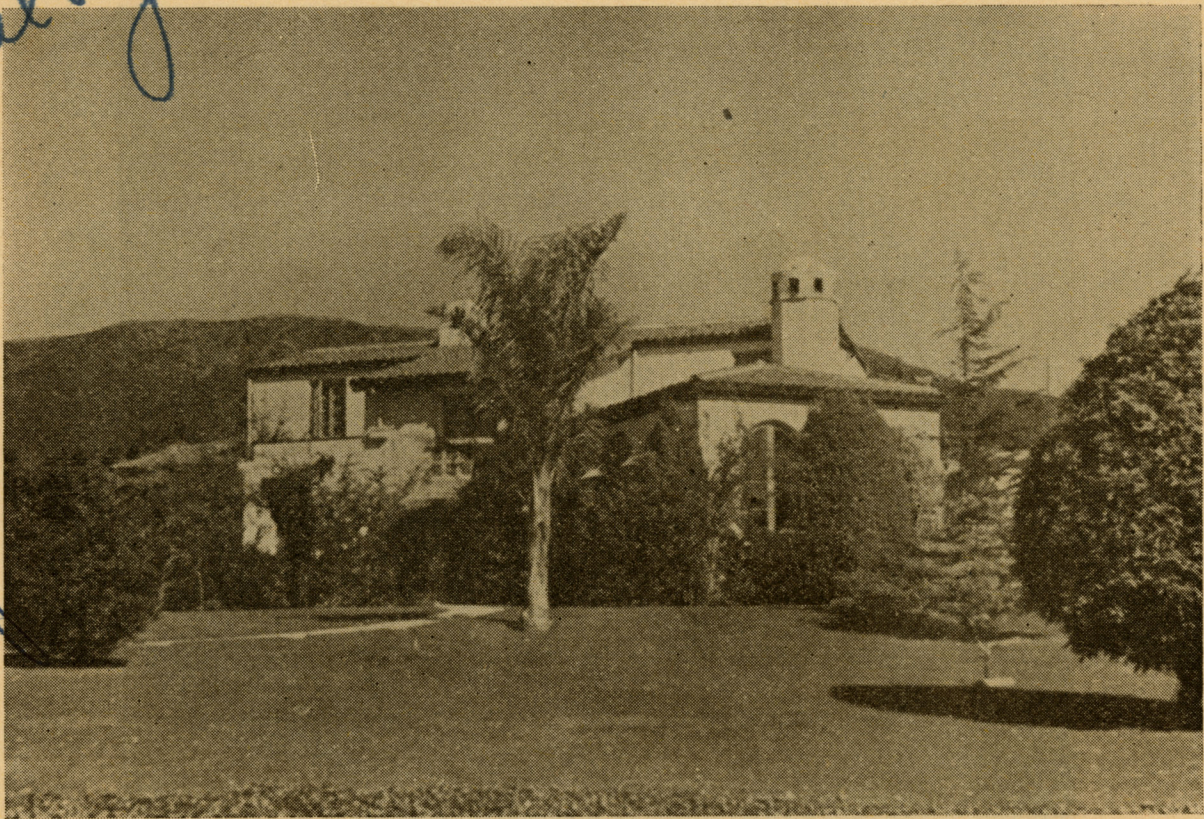
MARCEL E. LAYOUS  
 General Superintendent Sixth  
 Annual Poly Royal

Thillman  
 Howard  
 Henry Lang  
 Harold C. Gibson  
 John Gilch.  
 Missie Brown  
 Shigeo Yamana

Michael Schmidt No.  
 Amida Saller  
 Harry Petter  
 Fred C. Acker  
 Marcel E. Layous  
 Carl Beck



Marvin Bailey  
Paul Byrum



THE HOME OF THE DIRECTOR ON CAL POLY CAMPUS

The Poly Royal Show is the one event during the year when all of the departments of the California Polytechnic School are on display before the entire state of California. Its original purpose was to give to the farmers of San Luis Obispo County and the surrounding counties an opportunity to see the livestock and poultry at the school.

As years have gone by, this program has been expanded to include all the departments and facilities of the Institution and invitations have been sent throughout the entire state to its citizens as a whole and to leaders in government, agriculture and industry. Probably the most important visitors are the parents of the students.

The progress of the school is entirely dependent upon the success of the students. The Faculty and Administration are proud of the self-reliance of the students, for in no other agricultural and mechanical college of the nation do the students have the same opportunities to actually learn by doing. The fact that the students have complete charge of the "open house" that is the function of Poly Royal, is evidence of the high type of student and the kind of leadership needed in America.

The California Polytechnic School welcomes you as guests. If there is any way in which the students or Faculty can be of assistance to you, they will consider it a privilege to have you ask them.

JULIAN A. MCPHEE, Director  
California State Polytechnic.

George Wilson  
Lloyd Stennett

Paul E. Smith  
Answered with form M.C. Graft





FERN PORTER, MISS POLY ROYAL 1938

The event that is enjoyed most by the students at California State Polytechnic is the selection of Miss Poly Royal. Last year, Miss Fern Porter was chosen to reign over the 1938 show. She was given the crown of her position at an impressive coronation ceremony at the 1937 dance and has presided as Queen of the Poly Royal since that time. Miss Porter has been an exceedingly popular queen and has held, with distinction, this position which her predecessors have so worthily established. We of the California State Polytechnic, and especially those in charge of the Poly Royal, wish to thank Miss Porter for her very kind cooperation and hope that she has enjoyed being our Queen as much as we have enjoyed having her.

Miss Poly Royal for 1939 will be crowned at the Coronation Ball, April 2.





*Executive Committee Sixth Annual Poly Royal*

## POLY ROYAL EXECUTIVE COMMITTEE

### OFFICERS

Marcel Layous ..... General Supt.  
James Bloom ..... Secretary  
Phil Coombs ..... Treasurer

Mike Libonati ..... Publicity  
Anthony Leal ..... Program Editor  
Carl G. Beck ..... Adviser

### *Department Superintendents*

Agricultural Mechanics....Will Wood  
Agricultural Inspection..Fred C. Alley  
Landscaping ..... Howard Boltz  
Dairy ..... Paul Bjurman  
Poultry ..... Frisbie Brown  
Egg Show ..... Harry Petree  
Poultry Show ..... Andy Bowman  
Meat Animals ..... Henry Lang  
Beef ..... John Gilli  
Sheep ..... Marvin Danley  
Hogs ..... Sheigo Yamana  
Horses ..... George Wilson  
Aeronautics ..... Ben Snow  
Electricity ..... Norman Hiekes  
Air Conditioning .....Tommy Topham

### *Committee Chairmen*

Finance ..... Phil Coombs  
Publicity ..... Mike Libonati  
Barbecue ..... Earl Foor  
Clerking ..... Ernie Wettstein  
Hospitality ..... Arnold Wirtz  
Howard H. Hudson  
Dance ..... Leo Fitzgerald  
Program ..... Anthony Leal  
Contests ..... Harold Gibson  
Traffic ..... Bill Helphenstine  
Clean Up ..... Lloyd Stennett  
Signs ..... Marvin Hare  
Judging Ring ..... Emile La Salle  
Adult Judging Contests.....John Gilli  
Stock Horse.....Andy Witmer



COMPLIMENTS  
OF THE

South San Francisco Union  
Stock Yards Company







ALEX McDONALD JUDGING AT THE POLY ROYAL ARENA

PROGRAM FRIDAY, APRIL 1

8:00 A. M.—Judging of the Egg Show, Egg House.

10:30 A. M.—Open-air assembly, Main Arena.

Marcel E. Layous, General Superintendent, Master of Ceremonies.

Music by the Cal Poly Band.

Remarks—Julian A. McPhee, Director, California State Poly.

Presentation of Miss Poly Royal Candidates—Leo Fitzgerald.

Student Stock Horse Events—Andrew Witmer in charge.

Steer Riding.

Balloting for Miss Poly Royal, Administration Building.

12:00-1:00—Luncheon, School Dining Hall.

1:30-4:00 P. M.—Judging of Poultry Show, Dairy Building.

1:30-5:00 P. M.—Preliminary Judging of Livestock.

Dairy Classes—Main Arena.

Beef Classes—New Beef Unit.

Hog Classes—New Hog Unit.

2:00 P. M.—Baseball Game, Cal Poly vs. Santa Maria J. C.

7:00 P. M.—Smoker at Main Arena.

Boxing, wrestling, entertainment.

8:00 P. M.—Swimming Events at the New Pool.



## **BALANCE YOUR RATION WITH ECONOMY**

ECONOMY MINERALS answer many of your questions and problems regarding a balanced ration. They supply the essential mineral elements in a digestive and assimilative form.

Experience has proven that much of the value of an otherwise balanced ration is lost when you feed unthrifty, out-of-condition animals.

So, as a balanced ration is essential to bigger profits, a better general health condition in your animals is equally essential in making proper use of your feeds.

ECONOMY MINERALS have a very definite place in successful feeding programs, for they promote animal health, increase digestibility and supply the mineral ingredients lacking in feed stuffs—so essential in balancing rations.

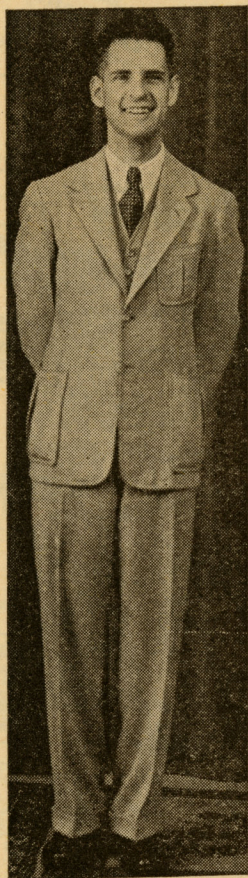
Thousands of feeders and producers of meat animals use Economy Minerals. The basis of this use is their value in so conditioning the animal and regulating the digestive tract that feeding rations can be converted into pounds of gain at a profitable rate.

Both economy and rate of gain directly influence your feeding profits. For satisfactory results, always feed ECONOMY MINERALS.

# **ECONOMY**

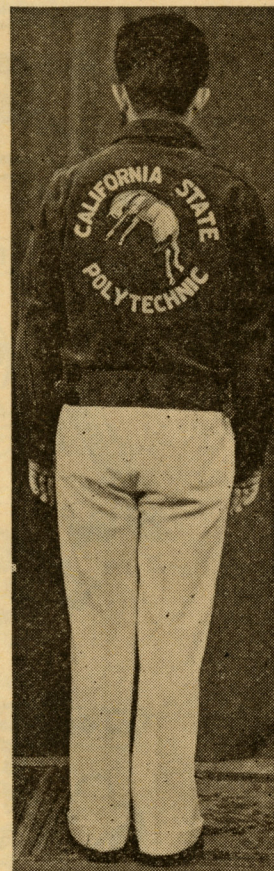
**HOG & CATTLE POWDER CO.**  
HEARST BLDG. (EST. 1900) SAN FRANCISCO





To the left is Harold P. Davidson, Director Cal Poly Mustang Band.

To the right picturizes the Mustang Uniform.



## PROGRAM SATURDAY MORNING, APRIL 2

8.00 A. M.—Completion of Preliminary Dairy Cattle and Livestock Judging.

Judging of Sheep, Classes.

9:00 A. M.—Plant Identification Contest for Women, basement Agricultural Education Building.

Open House and Demonstrations at all Departments.

Agricultural Mechanics, Agricultural Mechanics Building.

Air Conditioning, basement Administration Building.

Aeronautics, Aeronautics Building.

Agricultural Inspection, Agricultural Education Building.

Electrical, Electrical Laboratory.

10:00 A. M.—Adult Farm Organization Livestock Judging Contest, Main Arena.

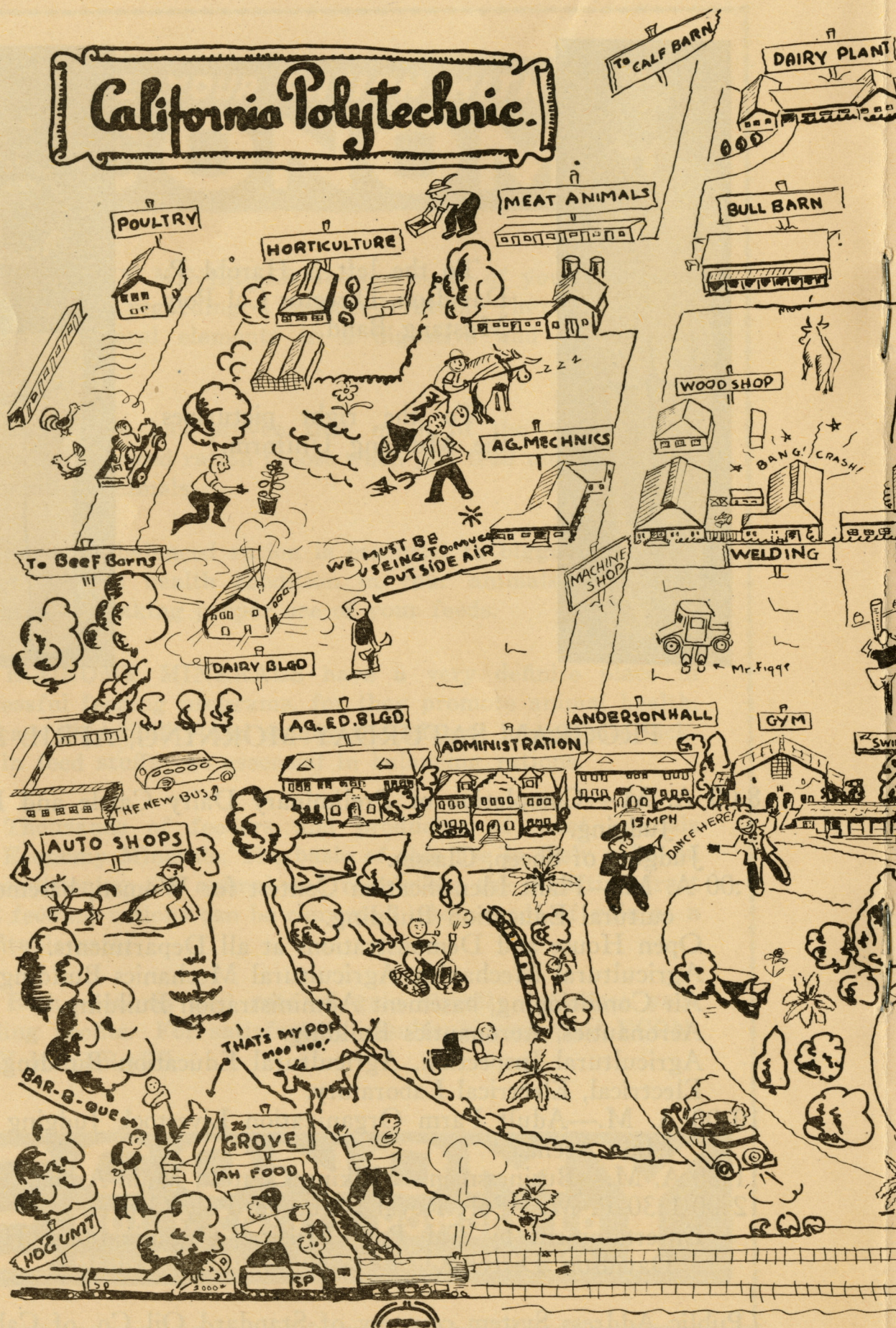
11:30 A. M.—Businessmen's Milking Contest, Main Arena.

12:00-1:30 P. M.—Poly Royal Barbecue, Poly Grove.

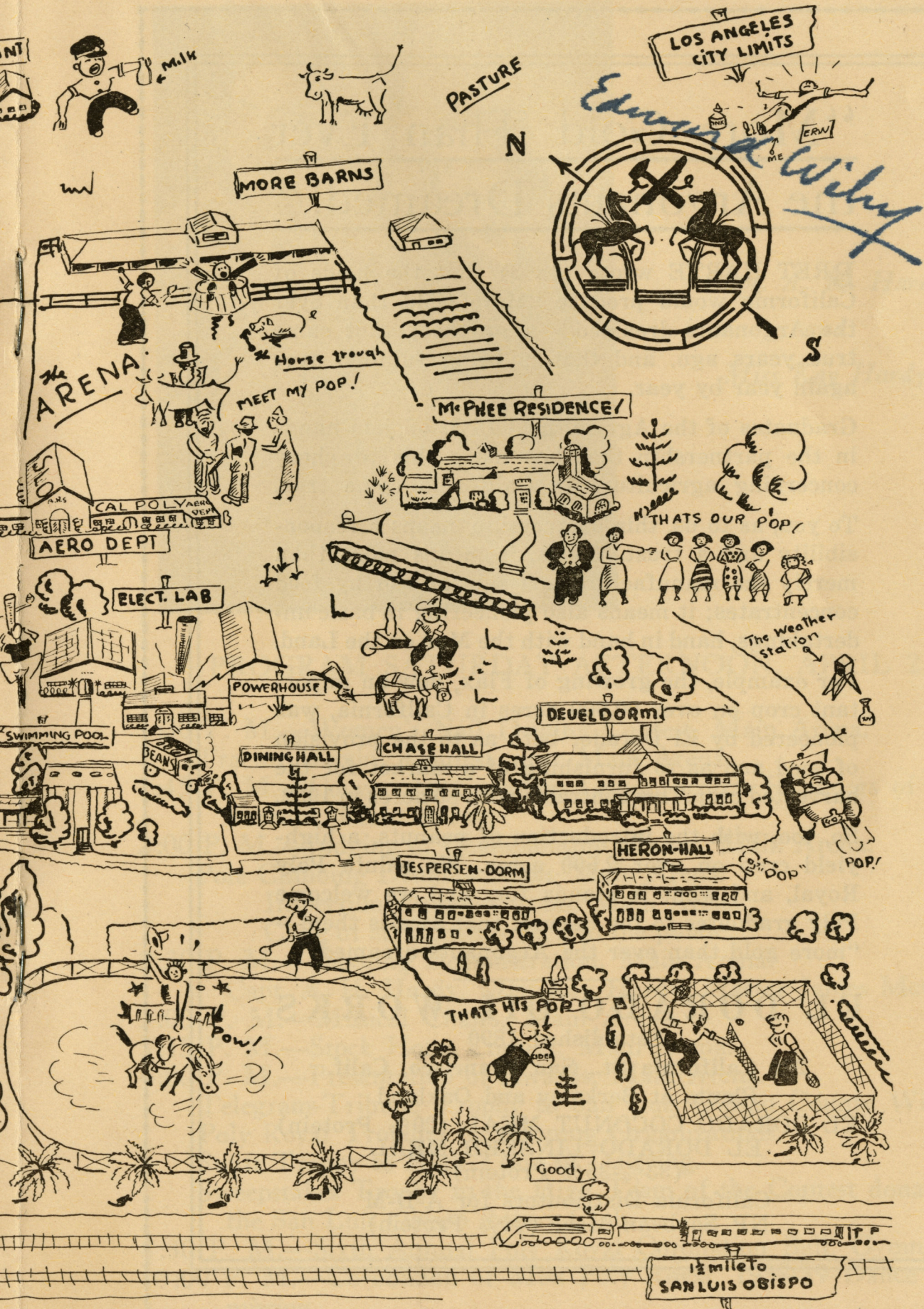
Entertainment by Cal Poly Musical Organizations. Harold P. Davidson, Director.

(Public Address System courtesy of Standard Oil Co. of California.)











## "More Gold Than Ever the Argonauts Dreamed!"

BRET HARTE wrote (1865) that the fields of California would produce "More Gold than ever the Argonauts dreamed"—a prophecy that came true years ago, and that is being fulfilled over again year by year.

Graduates of the Agricultural Division join hands in the partnership that has made this prophecy concerning agriculture in California come true.

To you, as to us, this partnership means a responsibility and a trust. To us, it means more than merely the manufacture and sale of worthy feed concentrates; it means also pioneering in basic undertakings, hand in hand with the Man on the Land.

For example, the growing of Flax, now an important crop on over 80,000 acres in California, was pioneered by El Dorado; both as to the provision of seed and as to furnishing of a market for the harvested crop. This contrasts with 80 acres in 1932.

So, too, with the introduction of peanuts, a high-yield crop on over 2,500 acres. We salute Poly Royal, and what it stands for; and we welcome Poly graduates to the harvest that awaits them—"more gold than ever the Argonauts dreamed."

### **EL DORADO OIL WORKS**

Established 1890

230 California St., San Francisco, Calif.

Plants at Berkeley and Oakland

EL DORADO COCONUT MEAL (20% Protein)

EL DORADO LINSEED MEAL  
(33%-35% Protein)

California Distributors for A-D-M  
NP Soybean Meal (44% Protein)





*Capt. A. H. Hardy  
and  
Miss Kay Hardy*

PROGRAM SATURDAY AFTERNOON, APRIL 2

- 1:30 P. M.—Women's Nail Driving Contest, Main Arena.  
Tractor Driving Contest, near Main Arena.
- 1:45 P. M.—Concert by Canadian Legion Scotch Hilanders of Santa Barbara, Main Arena.
- 2:00 P. M.—Judging of Championship Classes, Main Arena.  
Pole Climbing Demonstration, Main Arena.  
Inspection Demonstration, Main Arena.  
Close of all Contests open to the public.
- 2:30 P. M.—Shooting Demonstration, Main Arena.  
Capt. A. H. Hardy, Miss Kay Hardy, Master James McCapes.
- 3:00 P. M.—Musical Chairs, Main Arena.
- 3:15 P. M.—Stock Horse Contest, Main Arena.
- 4:00 P. M.—Presentation of Awards, Main Arena.  
Telegram-Tribune Trophy to San Luis Obispo County Winners.  
Poly Royal Trophies to Winning Organizations.  
Swift Trophy to High Team in Dairying.  
Sweepstakes Trophy to the High Team of the Contest donated by the San Luis Obispo Rotary Club.
- 8:30 P. M.—Sixth Annual Poly Royal Coronation Ball, Gymnasium.
- 10:00 P. M.—Coronation of Miss Poly Royal, 1938-39 Dance Intermission.



## Greetings to Our Friends at the Sixth Annual Poly Royal

We congratulate the Faculty and Students of the California State Polytechnic for the fine work they are doing.

The boys and girls of today are the men and women of tomorrow, and you are building a solid foundation which should lead to prosperity and happiness in years to come.

We wish you continued success.

---

### LARROWE MILLING COMPANY

(Trade Name)

**DIVISION OF GENERAL MILLS, INC.**

**733 Central Building**

**Los Angeles, Calif.**

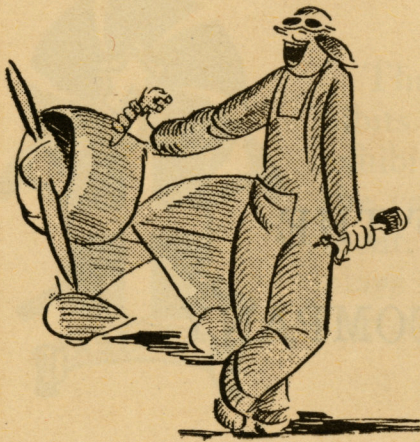
---

**DRIED BEET PULP**

**A Proven Feed of Merit  
Distributed by your local feed dealer**



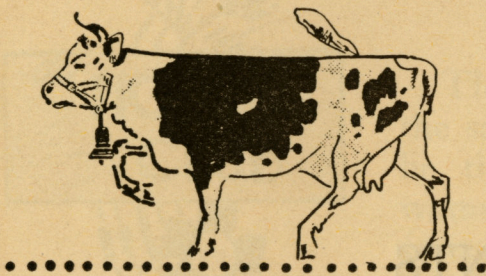
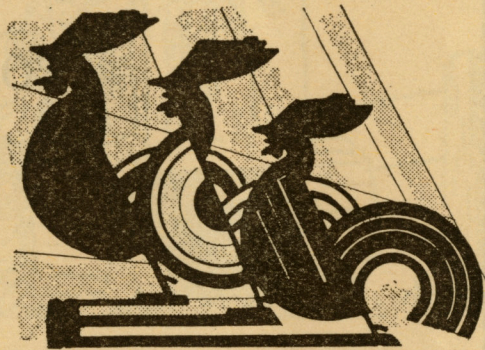
## AERONAUTICS



The aeronautics department will hold their usual open house event again this year. There will be some new airplanes which the students are constructing under faculty supervision and instruction. The actual process of tearing apart and putting together of an airplane motor by the students will be going on in the Aero Shop. During the Poly Royal there will be several Poly constructed airplanes flying over the Campus.

## POULTRY

This year the Poly Poultry Producers are going to display an outside show in front of the poultry plant and a big egg show at the egg house. There will also be many judging and guessing contests with valuable prizes for everyone.



## DAIRY

This year the dairy department students will show farm classes in competition. There will be a heifer class in each of the major dairy breeds and an aged bull class. There will also be a number of cattle on exhibition at the new dairy barn. Some of these cattle which will be on exhibition belong to the students.

# Evans Brokerage Co.

## REAL ESTATE

1118 Chorro St.

San Luis Obispo

Specializing in Ranch Properties in the Central  
Coast Area



COMPLIMENTS OF THE  
COAST WHOLESALE COMPANY  
AND  
BEST WISHES FOR A SUCCESSFUL  
POLY ROYAL

COMPLIMENTS  
OF  
CHAMBER OF COMMERCE  
San Luis Obispo  
California



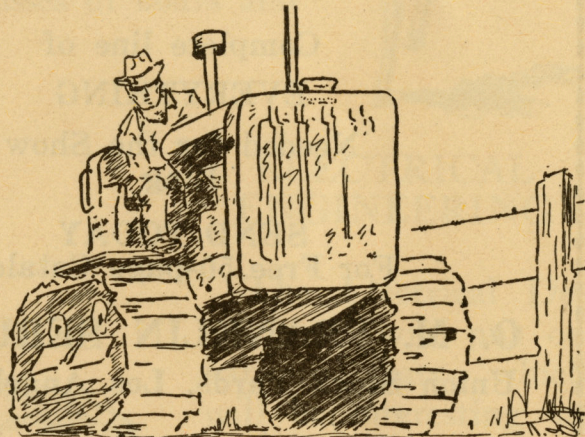


## AIR CONDITIONING

The Air Conditioning Department will have exhibits in various buildings on the campus. These exhibits are cooling and heating systems installed in the various buildings by the students in the department. In addition to this there will be various displays in the basement of the Administration Building and also in the Welding Shop.

## AGRICULTURAL MECHANICS

The Agricultural Mechanics Department will have on display various pieces of farm equipment made and repaired by the students. There will also be a machinery show featuring the latest types of tractors and farm machinery and an interesting exhibit of swine equipment and rural electrification.



## HORTICULTURE



The Horticultural displays will follow along the same lines as in previous years. There will be the Plant Identification Contest open to women, exhibits at the glass house and the different landscape and architecture designs made by the boys in the department will be exhibited in the class room upstairs in Anderson Hall.

### VOCO MINERALIZED COCONUT MEAL

Supplies all the minerals cattle and poultry require in order to maintain health and high production. It is the **ONLY** coconut meal that furnishes sufficient minerals (10½%) to offset deficiencies in other feeds....It supplies also 20% protein and a good measure of fats and carbohydrates.... Yet costs no more than plain meals. "The Value of Coconut Meal" reprinted from Feedstuffs Magazine, is yours for the asking.

### DURKEE FAMOUS FOODS

Division of the Glidden Company

BERKELEY

CALIFORNIA



# FRANKLIN

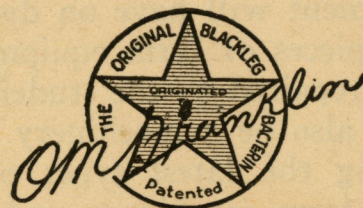
FOR.....

## Breeders' Supplies

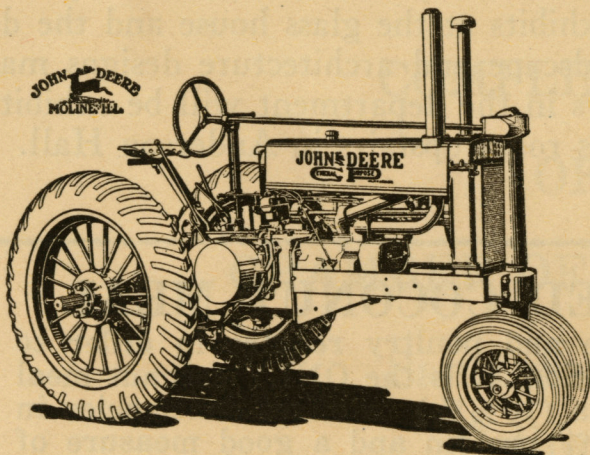
Complete line of  
EVERYTHING  
Needed for the Show  
Ring

SEND TODAY  
For Free 50-page Catalog

O. M. FRANKLIN SERUM CO.  
Union Stock Yards, Los Angeles, Calif.



## THE JOHN DEERE PLOW COMPANY OF SAN FRANCISCO, CALIFORNIA



CONGRATULATES  
THE  
SIXTH ANNUAL  
POLY ROYAL

And the  
Future Farmers of America

For Information See

**LUKE TRACTOR AND EQUIPMENT CO.**

San Luis Obispo—Santa Maria—Paso Robles—Goleta

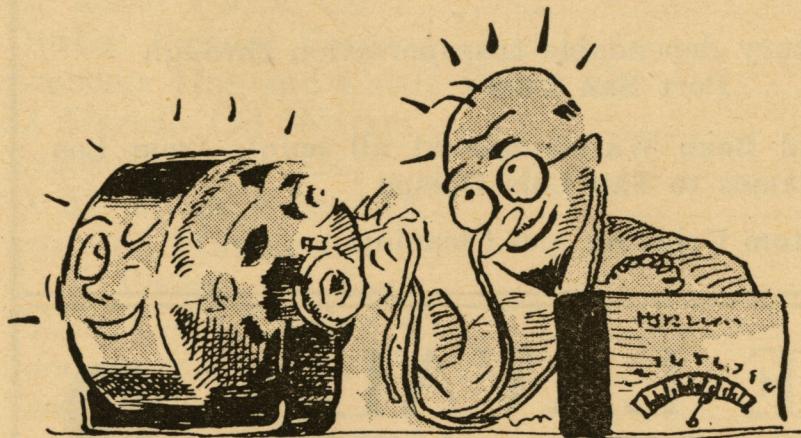


## MEAT ANIMALS

The Meat Animals students will show in competition among themselves all classes of livestock. Those interested in beef will show Shorthorn and Hereford heifers, class of young bulls, and classes of fat steers of all breeds. Sheep students will show classes of Hampshire and Southdown ewes, classes of Hampshire and Southdown rams, and all breeds of fat wethers. The Swine Department will have classes of Duroc and Poland sows, classes of gilts, classes of boars and classes of fat barrows of all breeds.



## ELECTRICAL ENGINEERING

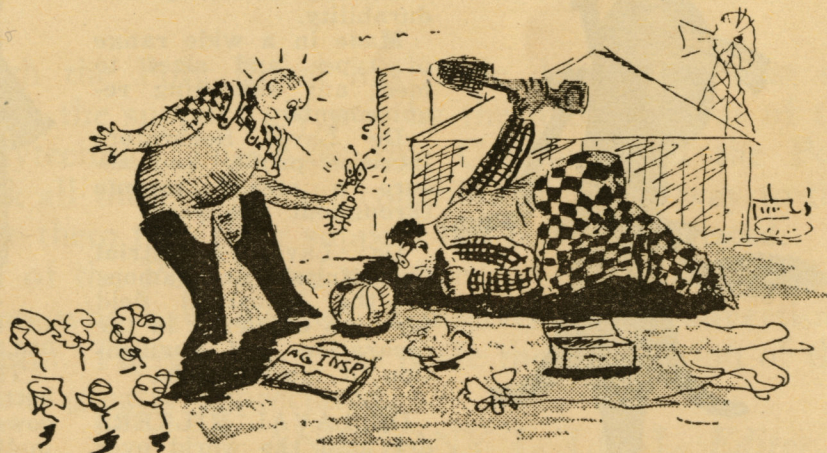


The Electrical Department will put on various feats which will be interesting as well as educational to all. Various feats such as the climbing of power poles with high tension wires on them, the

showing and explaining of the different electrical currents and circuits. Also the Power Plant and Electrical Laboratory will be thrown open to the public.

## AGRICULTURE INSPECTION

This will be the second Poly Royal that the Agriculture Department will have participated in. The demonstrations will be held in the Agriculture Education Building and a booth out by the arena. These will consist of displays and demonstrations of: Plant Quar-



antine, Standardization, Apiary, Weed and Rodent Control, and Field and Orchard Inspection.



*"Everything to Build Anything"*

# Pacific Coast <sup>COAL</sup>co. Lumber



LUMBER, MILLWORK, HARDWARE  
BUILDING MATERIALS, PAINTS

San Luis Obispo—Pismo—Arroyo Grande  
Santa Maria—Sisquoc—Los Alamos



## PACIFIC COAST RAILWAY CO.

Over half a century dependable transportation through  
Port San Luis

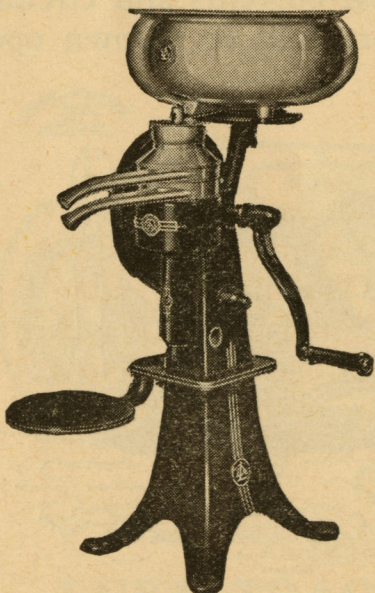
We operate Grain and Bean Warehouses at all points from Los  
Alamos to San Luis Obispo

Custom Grinding and Cleaning



## DE LAVAL

CREAM SEPARATORS and MILKERS



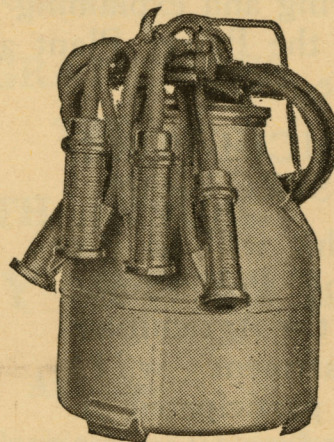
The De Laval Separator has been the world's standard for 60 years. Recent improvements have further increased its skimming efficiency and durability.

Made in a wide range of types and sizes to meet any skimming requirements.

De Laval Separators increase profits and assure a steady income throughout the year.

De Laval Industrial Centrifugals are famous in the industrial field for high efficiency in the separation and purification of most liquids.

DE LAVAL MILKERS are used the world over



to milk more than 3,000,000 cows twice a day.

The De Laval does a better job of milking cows than any other method.

DE LAVAL PACIFIC COMPANY  
San Francisco, California



*BE SURE TO VISIT "EL CORRAL"**STUDENT COOPERATIVE STORE**Basement of Administration Building*

## INDEX TO ADVERTISERS

San Luis Obispo Chamber of Commerce.....	18
Coast Wholesale Company .....	18
John Deere Plow Co.....	20
De Laval Pacific Co.....	22
Durkee Famous Foods .....	19
Economy Hog and Cattle Power Co.....	10
El Dorado Oil Works.....	14
Evans Brokerage Co. ....	17
O. M. Franklin Serum Co. ....	20
Larrowe Milling Co. ....	16
E. C. Loomis and Son.....	24
Pacific Coast Lumber Co.....	22
Sandercock Transfer Co. ....	24
San Luis Feed Co. ....	24
Southern Pacific Milling Co.....	24
South San Francisco Union Stockyards.....	8

## ACKNOWLEDGMENTS

The progress which the Poly Royal has made during the past six years is directly due to the support given it by the many friends of the California State Polytechnic. The Executive Committee of the Poly Royal wishes to thank all those who have contributed in any way to this progress and to assure them that their support has been appreciated.

The editorial staff of the Poly Royal program wishes to particularly thank those companies who have availed themselves of the advertising facilities of the program. Their support has made the publication of this booklet possible, and is greatly appreciated.

ANTHONY L. LEAL, *Editor.*

The appearance of Capt. A. H. Hardy at the Poly Royal is through the courtesy of the Peters Cartridge Co.



—SINCE 1872—

# Sandercock Transfer Co.

"EVERYTHING IN THE HAULING LINE"

Dealers in Coal and Feed — Storage  
Livestock Hauling a Specialty

737 MARSH ST. - - PHONE 19 - - SAN LUIS OBISPO, CAL.

# SAN LUIS FEED CO.

HUBBARD AND FAIRBANKS

Wholesale and Retail  
Poultry and Stock Foods

305 Higuera St. — Phone 655 — San Luis Obispo, Calif.

GREETINGS POLY ROYAL

# Southern Pacific Milling Co.

SINCE 1885

FOR A SUCCESSFUL POLY ROYAL

# E. C. LOOMIS AND SON

SAN LUIS OBISPO

ARROYO GRANDE

SERVING YOU SINCE 1905

FEED MILL

We Grind and Mix

Steam Rolling, Grain Cleaning and Treating

GRAIN AND BEAN BUYERS



