



An Open House & Poly Royal Production

# SPOTLIGHT: CAL POLY



APRIL  
**16**

CAL POLY

*Admitted Students'  
Preview Day*

**Cal Poly Premiere!**

APRIL  
**17**

CAL POLY

*Open to the Public,  
Poly Royal Parade*

**Showtime!**

APRIL  
**18**

CAL POLY

*Open House  
Golf Classic*

**Encore!**



CAL POLY





# Welcome from the Chairs

## Dear Open House Guests:

Hello and welcome to Cal Poly, San Luis Obispo's 11th Annual Open House. Whether you came from across the country or right down the street, this is the perfect opportunity to experience the Cal Poly "way of life." If you are new to this event, or a veteran of Open House or Poly Royal, Open House has something new and exciting for you.

We are extremely excited about this year's theme, "Spotlight: Cal Poly." This year we are spotlighting not only our outstanding academics, diverse clubs, and beautiful campus, but also the community of San Luis Obispo because of the great impact this community has on students' university experiences. We have used this theme throughout the entire weekend. You may notice our vintage Hollywood motif of red carpets, stage curtains, spotlights, boas, and tuxedos. Many of the participants in the Poly Royal Parade and student-run clubs will mirror a Hollywood premiere.

This three-day event is the product of the work of 25 student volunteers. This dedicated group has worked for a year, in collaboration with the campus and San Luis Obispo Community, to make this event possible and enjoyable for you.

Thanks for coming. We hope you enjoy seeing what is in the spotlight at Cal Poly.

See you next year!

*Robert Stornetta*

Robert Stornetta  
Open House 2004 Chair

*Casey Cortopassi*

Casey Cortopassi  
Open House 2004 Co-chair

## 2004 Open House Committee

**Chair:** Rob Stornetta

**Co-chair:** Casey Cortopassi

### Admitted Students' Preview Day:

Pam Gidwani, Director

Gianna Banducci, University Welcome Coordinator

Rachel Barr, Casino Night and Resource Fair Coordinator

### Alumni Relations:

Jason Mockford, Director

Rye Davis, Coordinator

### Club Relations:

Tracy Bronstein, Director

Lisa Baysinger, Club Carnival Coordinator

Lacey King, Farmers' Market Preview Coordinator

### Facilities and Operations:

Nga Huynh, Director

Ben Mullen, Coordinator

### Finance Committee:

Kasey Frahm, Director

Vikki Potthoff, Coordinator

### Public Relations:

Kristen Salinas, Director

Hilary Friiht, Publications Coordinator

Greg Gonzalez, Outreach Coordinator

Carl Payne, Media Coordinator

### Special Events:

Brenda Grijalva, Director

Dave Disbrow, Golf Tournament Coordinator

Skye Dmek, Parade Coordinator

Stacy Sanders, Parade Coordinator

Anup Somayaji, Mainstage Coordinator

### Transportation and Safety:

Brett Tsudama, Director

Leon Sheynkman, Assistant Director

### Advisors:

Lisa Bruce

Andrene Kaiwi-Lenting



# Table of Contents



Weekend Overview.....	3
Friday at a Glance.....	5
Saturday at a Glance.....	6
Sunday at a Glance.....	6
Alumni Events.....	7
Friday: Student Resources.....	9
College Events	
College of Agriculture.....	11
College of Architecture and Environmental Design.....	13
College of Engineering.....	15
College of Liberal Arts.....	17
College of Science & Mathematics.....	19
Orfalea College of Business.....	20
Special Events.....	21
Saturday: Student Resources.....	24
College Events	
College of Agriculture.....	25
College of Architecture and Environmental Design.....	27
College of Engineering.....	28
College of Liberal Arts.....	29
College of Science & Mathematics.....	30
Orfalea College of Business.....	31
Special Events.....	33
Sunday: Special Events.....	35
Participating Clubs.....	37
Guide to Cal Poly Colleges/Majors.....	40
Thank you.....	43
Maps.....	44



## Weekend Overview

### Friday, April 16 "Premiere"

Friday, Admitted Students' Preview Day, focuses on conditionally admitted students and their families. You will be introduced to Cal Poly's nationally recognized academic programs, as well as our friendly faculty and staff. You can take full advantage of the opportunity to meet college deans, tour the campus and departments, and get acquainted with the many resources available to Cal Poly students. Don't forget to attend Casino Night where you'll meet current and future students in a fun, informal atmosphere while playing casino games for a chance to win exciting prizes.



### Saturday, April 17 "Showtime"

Saturday is a showcase of all that Cal Poly has to offer and is open to the public. Many departments will have tours, displays, and exhibits. In addition, over 200 student clubs and organizations offer educational, informational and concession booths for you to visit. While exploring the campus, stop by Dexter Lawn to see a full program of student talent on the Open House Main Stage. The Carnival, located in the University Union Plaza, is great for kids of all ages featuring activities like a bounce house, fish toss, and much more! So come feast on everything from tri-tip to cotton candy and experience the excitement of other special events such as the Truck and Tractor Pull, Rodeo, Ballet Folklorico, and the Music Department's Open House Concert while enjoying all that Cal Poly has to offer.



### Sunday, April 18 "Encore"

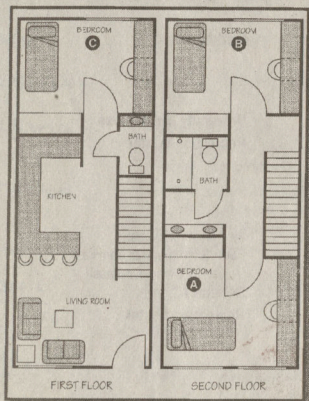
Sunday, Open House will host its 6th Annual Golf Classic at the beautiful Avila Beach Golf Resort. Players of all levels are invited to play and enjoy the lunch and awards ceremony following the tournament. Also, you'll have another chance to see the rodeo and be sure to catch the Cal Poly Mustangs baseball game and the All-State Wind Orchestra Concert.





# Valencia

**Townhouse Apartment Living for Students**



**FLOOR PLAN**

**Take a Virtual Tour  
Apply Online Today**  
[valenciaapartments.com](http://valenciaapartments.com)

- Great Amenities...**
- Your Own Bedroom in 3-Bedroom Units
  - Bedrooms Can Be Furnished/ Unfurnished
  - Fitness Center and Heated Pool
  - Computer Lab with FREE Internet Access
  - Recreation Center/ Billiards/ Ping Pong
  - TV Lounge with 72" Big Screen and VCR
  - Walk to Shopping Center and Restaurants
  - On SLO City Bus Route
  - Convenient 9.5 mo or 11.5 mo Leases
  - Reduced Noise Hours After 10PM
  - GPA Discount of 5% 10% for Superior Grades
  - Full-time Maintenance Department
  - 24 Hour Staffing for After-Hours Assistance
  - **NEW!** Credit Card Payments Now Accepted



*On-site Tours Weekdays 9am-5pm & Saturdays 10am -2pm  
Poly Open House Weekend: Saturday & Sunday 10am-4pm*

**555 Ramona Drive, San Luis Obispo CA 93405**  
tel 805-543-1450 fax 805-543-1477 [www.valenciaapartments.com](http://www.valenciaapartments.com)





# Friday at a Glance

## Admitted Students' Preview Day

7:30 AM-NOON

### Admitted Students' Check-In

College of Agriculture  
College of Architecture & Environmental Design  
College of Engineering

Mott Lawn

9 AM-NOON

### Admitted Students' Check-In

College of Liberal Arts  
College of Science & Mathematics  
Orfalea College of Business

Mott Lawn

8 AM-3 PM

### Resource Fair

University Union Plaza

8:30-9 AM

### University Welcome I

College of Agriculture  
College of Architecture & Environmental Design  
College of Engineering

Recreation Center

### College Welcomes

College of Agriculture

9:30 AM

Mott Gym (students)

9:30 AM

College of Architecture and Environmental Design

Farm Shop (parents, families)

9:30 AM

College of Engineering

University Union, Chumash

11-11:30 AM

### University Welcome II

Orfalea College of Business  
College of Liberal Arts  
College of Science and Mathematics

Recreation Center

### College Welcomes

Orfalea College of Business

NOON

Mott Gym

12:15 PM

College of Science & Mathematics

University Union, Chumash

1:00 PM

College of Liberal Arts

Christopher Cohan Center

9 AM-4:30 PM

### College and Departmental Activities

Campuswide

PLEASE REFER TO INDIVIDUAL COLLEGE SCHEDULE PAGES FOR DETAILS

4:30 PM

### Cal Poly Rodeo

Rodeo Arena

8-11 PM

### Admitted Students' Casino Night

Recreation Center

8-10 PM

### Parents' Coffee House

The Avenue Dining Complex



Friday, April 16, 2004

8:00-11:00 pm

Recreation Center

blackjack • roulette • craps • dj  
live bands • refreshments • prizes



## Parents'



While the kids are at play...  
mingle with other parents  
and ask questions of  
current Cal Poly  
students!

Friday, 8-11pm  
The Avenue Dining Complex



# Saturday at a Glance

Open to the Public



8 AM-4 PM	Open House Information Booth Meet Open House Committee members, buy an event t-shirt, obtain event information.	Dexter Lawn
9 AM	Poly Royal Parade	University Union @ Grand Ave.
9:45 AM	Opening Ceremonies	Main Stage, Dexter Lawn
10:30 AM-3:30 PM	Main Stage Performances	Main Stage, Dexter Lawn
10:30 AM-4 PM	Open House Carnival Club Information and Concession Booths, Exhibits, & Demonstrations	University Union Plaza Campuswide
11 AM-3:30 PM	Second Stage Performances Second Stage is the hot spot to view talent from the San Luis Obispo community. Acts will feature dazzling performances and outstanding sound.	University Union Plaza
1 PM	Truck and Tractor Pull	Field C-36 (across from Crop Unit)
3:30-4 PM	Closing Ceremony & Awards	Main Stage, Dexter Lawn
5 PM	Cal Poly Rodeo	Rodeo Arena
7 PM	Ballet Folklorico Dance Performance	Cal Poly Theater
8 PM	Music Department's Open House Concert	Christopher Cohan Center

# Sunday at a Glance

7 AM-2 PM	Open House Golf Classic	Avila Beach Golf Resort
1 PM	Cal Poly Rodeo	Rodeo Arena
2:30 PM	Music Department's All-State Festival Concert	Christopher Cohan Center



# Alumni Events

## Friday, April 16

### Chemistry & Biochemistry

The department will feature a table with college and department information on current programs and projects.

### KCPR 91.3 FM Reunion Check-In

### KCPR 91.3 FM

Sign up for on-air shifts—\$20 an hour.

NOON-4 PM

Bldg. 25, Rm. 125D

4 PM

Bldg. 26, Rm. 201

5 PM-1 PM

Bldg. 26, Rm. 201

## Saturday, April 17

### KCPR 91.3 FM

Sign up for on-air shifts—\$20 an hour.

### Materials Engineering Alumni Continental Breakfast

Alumni, spouses, and friends are invited to meet, mingle, and visit with faculty while enjoying a delicious continental breakfast hosted by the

Materials Engineering Department in their Building 12 office.

### Alumni Walk of Fame

Come visit some of Cal Poly's stars and notable alumni!

### Open House Planning Committee Alumni Picnic Area

Meet your friends and family at the alumni picnic area and travel together to the Poly Royal Parade, visit Cal Poly clubs, or stop by to take a break!

### Alumni Association Welcome Back Booth

All alumni are invited to join the Cal Poly Alumni Association at the "Welcome Back" booth to get reconnected.

### Chemistry & Biochemistry

The department will feature a table with college and department information on current programs and projects.

### Friends of WOW (FOW) Hospitality & Information Booth

The Friends of WOW (FOW) alumni group will have a hospitality and information booth. Stop by to see old pictures, meet with old friends, and sign up with the FOW alumni chapter.

### Poly Royal & Open House Alumni Hospitality Booth

Stop by if you would like to know more about the Open House Planning Committee. Former Poly Royal and Open House alumni will receive a free gift.

### Civil and Environmental Engineering Hospitality Room

Alumni & conditionally admitted students: breakfast buffet with cinnamon rolls, coffee, juice. Faculty will be available to answer questions.

### Electrical Engineering Hospitality Room

Alumni, prospective students, parents, and campus visitors are invited to come by and enjoy free refreshments. Faculty and students will be on hand to answer your questions.

### College of Engineering Alumni Recognition Luncheon

Alumni, faculty, and friends of the college celebrate the achievements of our distinguished alumni. With welcoming remarks by the dean, awards presentations, and a delicious lunch buffet, everyone will enjoy renewing old acquaintances and making new ones in a festive atmosphere.

### Computer Science & Software Engineering

### Hospitality Room

Talk with faculty and students. Light refreshments will be served.

### Industrial & Manufacturing Engineering Hospitality Room

Alumni, parents, current and prospective students—come by and enjoy free refreshments. Faculty and students will be available to answer questions.

### Mechanical Engineering Hospitality Room

Alumni and friends, come by for refreshments and reminiscing with ME faculty!

### ArC Annual Alumni Luncheon \*by reservation only

### College of Architecture & Environmental Design Room

Annual alumni luncheon, Structural Engineering Association of California. Invitation only; must RSVP to Architectural Engineering Department.

### Computer Engineering Hospitality Room

CPE faculty and students will be available to discuss the Computer Engineering Program. Refreshments will be served.

8-10 AM

Bldg. 26, Rm. 201

9-11 AM

Bldg. 12, Rm. 107H

9 AM-4 PM

Via Carta Road

9 AM-4 PM

Dexter Lawn

10 AM-4 PM

Dexter Lawn

10 AM-4 PM

Bldg. 25, Rm. 125D

10 AM-4 PM

Dexter Lawn

10 AM-4 PM

Dexter Lawn

10:30 AM-NOON

Bldg. 13, Rm. 118

10:30 AM-4 PM

Bldg. 20, Rm. 111

11 AM-12:30 PM

Bldg. 7, Adv. Technology Lab

11 AM-3 PM

Bldg. 14, Rm. 232

11 AM-4 PM

Bldg. 26, Rm. 103

11 AM-3 PM

Bldg. 13, Rm. 110

11:30 AM-1:30 PM

Bldg. 21, Courtyard

NOON-2 PM

Bldg. 21, Courtyard

10:30 AM-4 PM

Bldg. 20, Rm. 118



# Alumni Events



**Alumni Reception and Launch of First Issue—*FOCUS Journal*** 2-3 PM  
**KCPR 91.3 FM Students vs. Alumni Softball Game** 2-6 PM  
 Free hot dogs, garden burgers, and soft drinks will be provided. Bring your glove!  
**Men's Water Polo** 2-4 PM

An alumni water polo match where former Cal Poly Polo players from Nor-Cal compete against those from So-Cal. Anyone is welcome and encouraged to come and watch at the Recreation Center pool on the Cal Poly campus.

**MBA Reunion Dinner** 6 PM  
 An opportunity for all OCOB MBA grads to network.  
**KCPR 91.3 FM** 5 PM-1 AM

Sign up for on-air shifts—\$20 an hour.  
**Graduates of the Last Decade (GOLD) Social** 7-9 PM  
 Come out and reconnect with gold alumni. Tickets are \$10 for CPAA members, \$15 for non-members and include appetizers and two drink tickets or bottomless soda. For more information: [www.alumni.calpoly.edu](http://www.alumni.calpoly.edu).

**KCPR 91.3 FM** 7-10 PM  
 Reunion reception, \$20 per person, includes "fajita" reception, no-host bar. Contact alumni coordinator, Velanche Stewart (805.756.7326, [vstewart@calpoly.edu](mailto:vstewart@calpoly.edu)) for ticket availability and location information.

## Sunday, April 18

**Open House Golf Classic** 7 AM  
 Tournament fee is \$100 and includes green fees, golf cart, lunch, continental breakfast, tee prizes, and chances to win over \$1,000 in great prizes. There is a discounted rate of \$80 per person if you can put together a foursome. For an entry form and contact information, visit the Open House Website at <http://orientation.calpoly.edu/openhouse> or visit the Open House information booth.  
**KCPR 91.3 FM** 9 AM-5 PM  
 Sign up for on-air shifts—\$20 an hour.

**Bldg. 34, Second Floor Hallway**  
**Cuesta Park**

**Recreation Center Pool**

**Steamers in Pismo Beach**

**Bldg. 26, Rm. 201**

**Mother's Tavern**

**Bldg. 26, Rm. 201**

**Avila Beach Golf Resort**

**Bldg. 26, Room 201**

## Spotlight: Walk-of-Fame

This year, Open House has a special feature—the walk-of-fame. This walkway will connect the Dexter Lawn area to the Club Carnival area in the University Union Plaza and spotlights Cal Poly notable alumni from Mike Krukow to "Weird Al" Yankovic. Many of these household names were shaped right here at Cal Poly. To honor them we have constructed a walk of fame. So stroll down Via Carta, our very own Hollywood Boulevard. Below is a list of the alumni, but be sure to stop by the walk-of-fame to check out their contributions!

Bobby Beathard  
 Richard Bergquist  
 Gary Bloom  
 James W. Boswell  
 Elizabeth D. Carey  
 Jim Considine  
 Joseph Cotchett  
 Laura Diaz  
 Kevin Falls  
 Tom Ferguson  
 George P. Foster

Sally Fox  
 Michelle Franzen  
 Robert "Hoot" Gibson  
 Austin Hearst  
 Kathleen Holmgren  
 David Karr & Alex Pryor  
 Peter King  
 Mike Krukow  
 John Madden  
 Al Montna  
 Linda Ozawa Olds

Kirk Perron  
 Joseph Vergara  
 George Ramos  
 Loren Roberts  
 Monty Roberts  
 Kenneth Rodrigues  
 Burt Rutan  
 Kathy Sabine  
 Lisa Satriano  
 Al Smith (deceased)  
 Karin Smith

"Ozzie" Smith  
 Frederick W. "Rick" Sturckow  
 Bill Swanson  
 Alvin Trivelpiece  
 Steffan Tubbs  
 Gail Anderson Uilkema  
 Keith Uncapher (deceased)  
 Ernesto Vasquez  
 Walter Wilson  
 "Weird Al" Yankovic



# Friday's Student Resources

## University Union Plaza Resource Fair

Associated Students Inc.  
Campus Dining  
Career Services  
Disability Resource Center  
El Corral Bookstore  
Financial Aid

Health and Counseling Services  
Health Education Department  
Housing and Residential Life  
Interfaith Campus Council  
Intercollegiate Athletics  
International Education Programs

Parent Program  
Ride Share  
Student Academic Services  
Student Life & Leadership  
University Police Department  
Week of Welcome

## Campus Tours

Poly Reps will be offering campus tours on both days of Open House. All tours are walking tours of the campus that provide an overview of the University and its facilities. Friday, April 16—tours will leave on the hour, every hour, from the University Union Plaza stage between 9 AM and 2 PM (last tour leaving at 2 PM). Tours will also run on Saturday—see page 24 for details.

## Presentation and Session Information

**Housing and Residential Life Parent Info Sessions**

NOON & 2 PM

Sierra Madre Residence Hall (Bldg. 113)

**Housing and Residential Life Student Info Sessions**

NOON & 2 PM

Yosemite Residence Hall (Bldg. 114)

**Parents' Panel** (Sponsored by WOW and Parent Program)

2-3:30 PM

University Union, Rm. 220

The parent panel is an open forum for parents of prospective students to ask questions of current students and parents of current students. Topics will include benefits of a Cal Poly education, the prestige of the school, and any other questions pertaining to Cal Poly.

**Alumni Success Stories**

3:10-4 PM and 4:10-5 PM

See Insert for Location

Ever wondered what Cal Poly grads do for a living? Do you want to know what kind of jobs they get after graduation? Come to this informational session to hear a panel of recent Cal Poly graduates tell you how they are applying their degrees in the "real world." This is an informal setting featuring a brief introduction by each panelist followed by a Q & A session.

**Student Life & Leadership Showcase**

3:10-4 PM and 4:10-5 PM

See Insert for Location

Getting involved during your time at Cal Poly can be a most rewarding experience. Come to this session and hear from professional and student representatives about their experiences with the Multicultural Center, Greek Life, Student Community Services, LEADS, Women's Programs, Pride Alliance, Week of Welcome, and Open House, and how you can get involved!

**Student Government Network**

3:10-4 PM and 4:10-5 PM

See Insert for Location

Want to create change? Associated Students Inc. (ASI) is the way to go! From executive positions to board of directors positions and college councils, there are many opportunities for you to get involved with student government. This is an informal setting and will feature a brief introduction to representatives from ASI followed by a Q & A session.

## Student Academic Services Program Overview

Through Student Academic Services (SAS), students can utilize a network of academic services, advisors, and activities designed to assist students in excelling at Cal Poly and in enhancing students' learning skills. SAS provides academic and personal advising, and academic enhancement services. SAS offers support to students from backgrounds that have been traditionally underrepresented by income and/or disability in the CSU. The key goal of SAS is to ensure that all students at Cal Poly have equal opportunity to achieve academic success and graduation.

**Student Academic Services:**

Academic Skills Center  
Connections for Academic Success  
Educational Opportunity Program

Educational Talent Search  
Student Support Services  
Summer Institute

Supplemental Workshops in Math  
Supplemental Workshops in Science  
Upward Bound

Academic advisors will be available on a drop-in basis to answer questions and provide information about department services:

**Academic Skills Center**  
**Connections for Academic Success**  
**Educational Opportunity Program**  
**Student Support Services**

9 AM-3 PM  
9 AM-3 PM  
9 AM-3 PM  
9 AM-3 PM

Bldg. 33, Rm. 290  
Bldg 65, Rm. 217A  
Bldg. 81, Hillcrest  
Bldg. 124, Rm. 119



# Friday's Student Resources



<b>Admissions Office</b>	<b>8 AM-5 PM</b>	<b>Bldg. 01, Rm. 206</b>
<b>ASI Recreational Sports</b>	<b>10:30 AM-3 PM</b>	<b>Recreation Center</b>
Recreation Center guided tours available every half hour. Information booth also open from 8:30 AM-2 PM.		
<b>Career Services</b>	<b>8 AM-4 PM</b>	<b>Bldg. 124, Rm. 114</b>
Career Services staff will be available at the Resource Fair to answer your career/job-related questions. A summary of services will be available at the fair as well as in the office.		
<b>Campus Dining</b>	<b>2-4 PM</b>	<b>Light House, Bldg. 19</b>
Parents' self-guided tour of Light House; Bldg. 19, just down the stairs from the University Union Plaza. Sit down, have something to drink, and see where most students living on campus dine several times each week.		
<b>Disability Resource Center (DRC)</b>	<b>9 AM-4 PM</b>	<b>Bldg. 124, Rm. 119</b>
DRC advisors will be available to answer questions from prospective students and their families and provide information about departmental services.		
<b>EI Corral Bookstore</b>	<b>7:45 AM-5 PM</b>	<b>University Union</b>
Shop at our main store, located in the University Union, for all required and recommended courseware as well as a fully stocked student and office supply section, Tech Center with the latest computer hardware, software and peripherals, Cal Poly insignia clothing and gift section, general reference and reading books, magazines, seasonal gifts and greeting cards, health and beauty aids and snack foods. We also offer 24 hour information and shopping on our Web site: <a href="http://www.elcorralbookstore.com">www.elcorralbookstore.com</a> .		
<b>Financial Aid</b>	<b>8 AM-4 PM</b>	<b>Bldg. 01, Rm. 212</b>
The Financial Aid Office will be open for questions from prospective students and their families. Because of federal privacy laws, the student must be present when discussing his/her specific information.		
<b>Health &amp; Counseling Services</b>	<b>9 AM-4 PM</b>	<b>Bldg. 27</b>
Health Center staff will be available to answer your health care and other health-related questions. Tours of the Health Center are self-guided.		
<b>Housing &amp; Residential Life</b>	<b>10 AM-4 PM</b>	<b>All Residence Halls</b>
Tours of the residence halls are self-guided. Flyers and maps are available at the Resource Fair and the "Housing Info Center" located in front of Santa Lucia Hall (Bldg. 106). The Housing Office will be closed Friday and Saturday and all housing staff will be located at the Housing Info Center.		
<b>Parent Program Welcome Booth</b>	<b>8 AM-3 PM</b>	<b>University Union Plaza</b>
Cal Poly Parent Program staff and parents of current students are available to answer questions and provide parent-to-parent perspectives about ways to support your student's success. The Parent Program fosters communication and partnership between and among parents and the University and provides ways for parents to be involved and provide feedback to the University's administration. Stop by and pick up our parent newsletter and handbook and sign up for our parent e-com service.		
<b>Robert E. Kennedy Library</b>	<b>7 AM-5 PM</b>	<b>Bldg. 35</b>
<b>Student Life &amp; Leadership</b>		
The Community CENTER	10 AM-3 PM	University Union, Rm. 217
Multicultural Center	10 AM-3 PM	University Union, Rm. 217
Women's Center	10 AM-3 PM	University Union, Rm. 217
<b>University Police Department</b>	<b>7 AM-5 PM</b>	<b>Bldg. 74</b>

## Admitted Students' Day Questionnaire

### Your Opinion Matters

### Tell Us What You Think

Before you leave campus today, please take a few minutes to complete the **YELLOW** questionnaire that you received during check-in or pick one up at the Open House Information Booth. Drop the questionnaire into any of the boxes across campus marked "Admitted Students' Day Questionnaire."

Thanks for coming today...and thanks for your feedback!



# Friday's College Events

## College of Agriculture

### All Departments

Information Booth  
Admitted Students' Check-In  
University Welcome  
Student Welcome & Student Discussion  
Parent Welcome Program  
Admitted Ag Student and Parent BBQ

All Day  
7:30 AM-NOON  
8:30-9 AM  
9:30 AM  
9:30 AM  
11:30 AM-1 PM

Via Carta & Perimeter  
Mott Lawn  
Recreation Center  
Mott Gym  
Bldg. 9, Farm Shop  
Bldg. 9, Farm Shop

### Agribusiness

Presentation on the Agricultural Business Major

1 PM

Cal Poly Theater

### Agricultural Education and Communication

Presentation on the Agricultural Science Major

1 PM

Bldg. 10, Rm. 241

### Animal Science

Presentation on the Animal Science Major

1 PM

Bldg. 16

Equine Center Tour

2:30 PM, 3:30 PM

Bldg. 32, Horse Unit

Poultry Center Tour

2:30 PM

Bldg. 150, Poultry Unit

### Bioresource and Agricultural Engineering

Presentations on BRAE and Agricultural Systems Management Majors

1 PM

Bldg. 8, Rm. 122

### Dairy Science

Presentation on Dairy Science Major

1 PM

Bldg. 18, Rm. 2

Dairy Cattle Instructional Center Tour

2:30 PM, 3 PM

Bldg. 18, Rm. 1

Dairy Products Technology Building Tour

2:30 PM, 3 PM

Bldg. 18, Rm. 2

### Earth and Soil Sciences

Presentation on Earth Sciences Major

1 PM

Bldg. 52, Rm. A07

### Food Science and Nutrition

Presentation on Food Science and Nutrition Majors

2 PM

University Union, Chumash

### Horticulture and Crop Science

Presentation on Environmental Horticulture Science, Crop Science, Fruit Science, and Plant Protection Science Majors

1 PM

Bldg. 17, Rm. 101

### Military Science

Information Booth on Scholarship and Career Opportunities

1-5 PM

Dexter Lawn

### Natural Resources Management

Presentation on Forestry and Natural Resources and Environmental Management and Protection Majors

1 PM

Bldg. 10, Rm. 223

### Recreation, Parks, and Tourism Administration

Presentation on Recreation, Parks and Tourism Administration Major

1 PM

Bldg. 8, Rm. 123

### Cal Poly Rodeo

Rodeo

4:30 PM

Rodeo Arena

Tickets—\$8, general; \$5, students, seniors, children under 5. Purchase at rodeo grounds, day of event.

Barbeque at the Madonna Inn

6-10 PM

Madonna Inn Expo Hall



*"Am I worried about finals? Yes.  
Am I worried about paying for college?"*

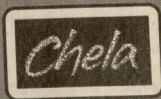
*Not anymore."*

Katie Nelson's future is looking bright. Not only did she get accepted to Cal Poly but, thanks to Chela Education Financing, she also found the best way to pay for it. By going to Chela, Katie found interest rate discounts and rebates on her Federal Stafford Loan that she couldn't get from any other student loan providers. And when her parents needed some help covering her additional college expenses, Chela came through with a great private loan. As a leading not-for-profit education financing company, Chela has been helping students like Katie reach their education goals for more than 25 years. Chances are, they can help you, too. Now, Katie can stop worrying and get ready for her future.

Cover all your education financing needs today—call Chela Education Financing at 1.800.347.4352 or visit [chelastudentloans.org](http://chelastudentloans.org)

We're in it for Katie Nelson.

**We're in it for the students.**



EDUCATION FINANCING

© 2004 Chela Education Financing, Inc. All rights reserved.





# Friday's College Events

## College of Architecture & Environmental Design

### All Departments

**Admitted Students' Check-In**

7:30 AM-NOON

Mott Lawn

**University Welcome**

8:30-9 AM

Recreation Center

**CAED New Student Welcome Meeting**

9:30-10:30 AM

University Union, Chumash

**Design Village Competition, Sustain-a-Build**

10 AM-5 PM

Poly Canyon

Students from across the U.S. and Canada, competing in this unique and intensive three-day event, must carry materials, related to the theme "Sustain-A-Build" for their self-designed shelters up Poly Canyon, build them, and live in them for three days and two nights. Visitors are invited to view the innovative accommodations on Friday from 2 pm-4 pm and Saturday from 10 am-4 pm via a shuttle from the base of Poly Canyon Road. Free admission courtesy of the CAED.

**Free Shuttle Service to Design Village**

2-4 PM

Poly Canyon Gate

**Robert Hifumi Odo Memorial Scholarship Display**

NOON-5 PM

Bldg. 5, Rm. 212-Lobby

**College Tours by the CAED Ambassadors**

NOON-4 PM

Bldg. 5, Lower Stair Court

**CAED Student Work Exhibit, Solar Decathlon**

NOON-5 PM

CAED Gallery, Bldg. 5, Rm. 105

**Exhibit, and Leon Phillips Art Exhibit**

This exhibit spotlights the work of students alongside a solar decathlon display of preliminary Cal Poly designs to build the most energy efficient and innovative home possible for a national competition, plus an art exhibit in tribute to one of the CAED's earliest graduates, Leon Phillips (ARCH '51) featuring his one-of-a-kind metal sculptures.

**Hearst Lecture: Lorcan O'Herlihy "Operational Layers"**

4-5:30 PM

Bldg. 3, Rm. 213

The College of Architecture and Environmental Design proudly presents Lorcan O'Herlihy, AIA. This free lecture is made possible by a generous grant from the Hearst Foundation.

**After-Lecture Reception**

5:30-6:30 PM

CAED Gallery, Bldg. 5, Rm. 105

### Architectural Engineering

**Meeting with New Students**

1-2 PM

Bldg. 21, Rm. 122A

**Transfer Student Portfolio Review & Advising**

2-3 PM

Bldg. 5, Rm. 110A

**Transfer Student Advising**

3-4 PM

Bldg. 21, Rm. 110A

### Architecture

**Analog-Digital Design & Visual Communication Studio**

8 AM-NOON

Bldg. 5, Rm. 204

**Meeting with New Students**

12:15-1 PM

Bldg. 5, Stair Court

**Transfer Student Portfolio Review & Advising**  
(Arch/ArchE courses)

1-3 PM

Bldg. 5, Rm. 203, 204

**Community Renovations: Mixed Retail and Housing Infill**

1-5 PM

Bldg. 5, Rm. 304

**Collaborative Interactive Design Studio/Open Classroom**

2-4 PM

Bldg. 5, Rm. 207, 224\*

\*Demonstrations available on the half hour in Room 224.

**Cal Poly Downtown Studio**

2-4 PM

Pacific Coast Center  
Higuera St. @ Madonna Rd.

### Spotlight: Open House Committee

Interested in the ultimate "Learn-by-Doing" experience? Join other Cal Poly students as they plan this premier showcase event! The Open House Committee is a great opportunity to gain leadership experience while meeting others and having fun. If you are interested in joining the committee, please visit our Website at <http://orientation.calpoly.edu/openhouse> or e-mail [open-house@calpoly.edu](mailto:open-house@calpoly.edu) for more details.





## College of Architecture & Environmental Design

### *City and Regional Planning*

Meeting with New Students

12:30-1 PM

Bldg. 34, Rm. 249

Transfer Student Portfolio Review and Advising

1-2:30 PM

Bldg. 34, Rm. 249

### *Construction Management*

James A. Rodger "Tower of Power" Dedication

11 AM-NOON

Bldg. 21, West End (near Bldg. 2)

Come join the CAED's Construction Management (CM) Department in dedicating the newly constructed "Tower of Power," in honor of former department head James A. Rodger. This unique steel sculpture is a life-size teaching aid demonstrating the more common aspects of non-seismic structural steel construction and examples of post-Northridge earthquake resistant details.

Meeting with New Students & Transfer

12:30-2 PM

Bldg. 21, Rm. 120B

Student Advising

### *Landscape Architecture*

Meeting with New Students

12:30-1 PM

Bldg. 34, Rm. 213, Upper Lobby

Transfer Student Advising

1:30-3 PM

Bldg. 34, Rm. 210

Tour of Studios

1-1:30 PM

Bldg. 34, Rm. 213, Upper Lobby



Conceived in Europe.  
Made in California.

HEARST CASTLE

CONDÉ NAST TRAVELER  
"BEST U.S. MONUMENT"  
READERS' CHOICE AWARD

Located on Highway 1 on California's Central Coast. Reservations are required.

Call (800)444-4445 or reserve online at [www.hearstcastle.com](http://www.hearstcastle.com)



# Friday's College Events

## College of Engineering

### All Departments

Admitted Students' Check-In  
University Welcome  
College Welcome

7:30 AM-NOON  
8:30-9 AM  
9:30-10:30 AM

Mott Lawn  
Recreation Center  
Recreation Center

### Aerospace Engineering

Welcome Lunch  
Lab Tours

11 AM-12:30 PM  
12:15-3:30 PM

Bldg. 58, Welding, Parking Lot  
Bldg. 58, Welding, Parking Lot

Guided tours of AERO labs will depart from Bldg. 58 (Welding Building) after lunch beginning at 12:15 PM. Tours will include visits to the Structures Lab, Propulsion Lab, Aircraft Design Lab, Spacecraft Design Lab, and Flight Simulator Lab.

Q & A Session with Dr. Dianne DeTurreis

3:30-4 PM

Bldg. 58, Welding Parking Lot

### Civil and Environmental Engineering

Tours of Civil and Environmental Engineering Labs  
Welcome Luncheon and Information Session

11 AM-1 PM  
1:15-2:30 PM

Bldg. 13  
Mott Gym

Box lunches provided by Campus Catering. During information session the department chair and faculty are introduced and short speeches are given by several University and college representatives describing Cal Poly advantages and various services available to students.

### Computer Engineering

Welcome, Lunch, Senior Project, and Club Faire

11 AM-1 PM

Christopher Cohan Center, Pavilion

After a brief welcome by Dr. Myers, CPE Program Director, participants are welcome to browse various displays, including several computer engineering senior projects. Light buffet lunch will be served.

Lab Tours and Demos

1-3 PM

Bldg. 20, Forbes Center Patio

CPE faculty and students will give guided tours of labs and demonstrations.

### Computer Science & Software Engineering

Welcome Luncheon & Information Session

11 AM

Vista Grande Cafe, Bldg. 12

Box lunches will be provided by Campus Catering. During information session the department chair, faculty and students will give an overview of the program. There will be an opportunity to ask questions about the program including curriculum, faculty, projects, and student activities.

Department Tours & Demos

1-3 PM

Bldg. 14

Selected labs will be open for viewing with current students and faculty on hand to answer questions and give demos. Maps of open computer science labs will be included in student packets.

### Electrical Engineering

Welcome from Mike Cirovic, Department Chair

11 AM-NOON

Christopher Cohan Center

During this information session, the department chair, faculty and students will give an overview of the program. There will be an opportunity for questions regarding curriculum, projects and student activities, including clubs.

Box Lunch

NOON-1 PM

Bldg. 20, East Lawn

Department Tours

1:30-3 PM

Bldg. 20

### General Engineering

Welcome Luncheon and Introductions; Q & A Session

11 AM-1 PM

Bldg. 7, Keck Lab

### Industrial and Manufacturing Engineering

Welcome and Introductions

11 AM

Bldg. 26, Rm. 103

Demonstration of equipment and interactive activities for students and parents; meet current students and faculty.

11:15 AM

Bldg. 26, Rm. 103

Lunch

NOON

Bldg. 26, Lawn Area

Tours of Lab Facilities; Demonstrations

1 PM

Start in Bldg. 26

Q & A session with current students & faculty.

2:30 PM

Bldg. 26, Rm. 103



An Open House & Poly Royal Production

## SPOTLIGHT: CAL POLY

### College of Engineering

#### Materials Engineering

Welcome and Introductions

11 AM-NOON

Lunch with Students and Faculty

NOON-1 PM

Panel Discussions for Parents and New Students

1-3 PM

University Union, Rm. 220

Bldg. 12, Lawn

TBA

#### Mechanical Engineering

BBQ Lunch, Welcome and Student  
& Club Presentations

11 AM-1 PM

Bldg. 41, Engineering III

Welcome remarks: Ron Mullisen, Interim Chair. 12:10-1:00 pm—ME program and student club presentations.

Lab Tours and Demonstrations

1-3:30 PM

Bldg. 41, Engineering III

ME students will guide tours of ME labs and demonstrations.

Project Machine Shop Tours

1-3:30 PM

Bldg. 41, Engineering III

Passenger vans to the machine shop will depart every 30 minutes.

#### Womens' Engineering

Panel Discussion

4-6 PM

Bldg. 7, Keck Lab

"Past, Present & Future of Women in Engineering." After a welcome by Dean Lee and an introduction to the Women's Engineering Program and the Society of Women Engineers, female students and distinguished alumnae will conduct a panel discussion. Following, the students, faculty, and alumnae will be available for one-on-one discussions at an hors d'oeuvres reception.

# OPEN HOUSE CONCERT

With Cal Poly's  
Wind Ensemble,  
University Jazz Band,  
Symphony & PolyPhonics

\$5-\$15 tickets at the  
Performing Arts Ticket Office:  
756-2787, [www.pacsl.org](http://www.pacsl.org)

Ample parking  
available!

APRIL 17, 2004  
8 P.M., SATURDAY  
PERFORMING ARTS CENTER

## ALL-STATE FESTIVAL CONCERT

The state's finest  
young musicians are  
chosen by recorded  
audition to participate  
in this event.

Robert W. Smith will conduct  
the Festival Wind Orchestra.

Vibraphonist Charlie Shoemaker  
will be the special guest soloist  
with the Festival Jazz Band.

APRIL 18, 2004  
2:30 P.M., SUNDAY  
PERFORMING ARTS CENTER

\$5-\$15 tickets at the Performing Arts Ticket Office:  
756-2787, [www.pacsl.org](http://www.pacsl.org)

Both events sponsored by the  
Cal Poly Music Department and  
College of Liberal Arts





# Friday's College Events

## College of Liberal Arts

### All Departments

Admitted Students' Check-In  
Visit CLA Classes  
University Welcome

7:30 AM-NOON  
8 AM-1 PM  
11-11:30 AM

Mott Lawn  
See List, Next Page  
Recreation Center

### Art and Design Department

Student Exhibits

9 AM-1 PM

Bldg. 34, Gallery

### Graphic Communication

Labs Open for Visit

9 AM-1 PM

Bldg. 26, Rm. 209

### Journalism Department

Tours and Exhibits

9 AM-1 PM

Bldg. 26, Second Floor

Cal Poly TV (CPTV) Demo, Mustang Daily, KCPR Radio

### Modern Languages and Literature

Polylingual International Resource Center

9 AM-1 PM

Bldg. 12, Rm. 105A

CLA Multimedia Lab

10 AM-4 PM

Bldg. 12, Rm. 105B

### College of Liberal Arts Welcome

Dean Hellenbrand, faculty and students, and student musical performances.

1-2:30 PM

Christopher Cohan Center

### Department Meetings, Tours, and Exhibits for Students and Parents

Art and Design

2:30-4 PM

Bldg. 34, Gallery

Child Development

2:30-4 PM

Bldg. 38, Rm. 125

English

2:30-4 PM

Bldg. 53, Rm. 213

Graphic Communication

2:30-4 PM

Bldg. 26, Rm. 209

History

2:30-4 PM

Bldg. 53, Rm. 201

Journalism

2:30-4 PM

Bldg. 26, Rm. 304

Liberal Studies

2:30-4 PM

Bldg. 65, Rm. 207

Modern Languages and Literatures

2:30-4 PM

Bldg. 12, Rm. 105A

Music

2:30-4 PM

Bldg. 45, Rm. 129

Philosophy

2:30-4 PM

Bldg. 47, Rm. 37

Political Science

2:30-4 PM

Bldg. 65, Rm. 204

Psychology

2:30-4 PM

Bldg. 65, Rm. 204

Social Sciences

2:30-4 PM

Bldg. 65, Rm. 204

Speech Communication

2:30-4 PM

Bldg. 52, Rm. A12

Theater

2:30-4 PM

Bldg. 44, Cal Poly Theater

### College Advising

College Advising Center Open

2:30-4 PM

Bldg. 47, Rm. 25G

Advising with Wendy Spradlin.

Liberal Studies

2:30-4 PM

Bldg. 65, Rm. 207

Advising with Betty Sawyer.

Political Science, Social Sciences and Psychology

2:30-4 PM

Bldg. 65, Rm. 204

Advising with Bonnie McKim.

### Theater

The Glass Menagerie Rehearsal

7-11 PM

Bldg. 45, Rm. 212



# College of Liberal Arts

An Open House & Poly Royal Production  
**SPOTLIGHT:  
CAL POLY**

## Classes Open to Visit

### Art & Design

Intro/Artificial Light/Photo with J. Clarke 9:10-11 AM Bldg. 34, Rm. 222

### Child Development

Supervised Study: Early Childhood with M. Berrio 9:10-1 PM Bldg. 38, Rm. 125  
Visit in Observation Booth Only

### English

Core III: 1660-1798 with K. Rummell 8:10-9 AM Bldg. 10, Rm. 201  
Core III: 1660-1798 with K. Rummell 10:50 AM-NOON Bldg. 10, Rm. 201  
Core VI: 1914-present with N. Lucas 9:30-10:40 AM Bldg. 10, Rm. 200  
Core VI: 1914-present with N. Lucas 12:10-1:30 PM Bldg. 10, Rm. 201  
Introduction to Shakespeare with W. Fitzhenry 9:30-10:40 AM Bldg. 10, Rm. 201  
Introduction to Shakespeare with W. Fitzhenry 10:50-NOON Bldg. 10, Rm. 200  
Great Books I: Intro to Classical Lit. with C. Wooten 12:10-1 PM Bldg. 22, Rm. 312  
Great Books III: Romantic-Modern Lit. with R. Inchausti 9:30-10:40 AM Bldg. 52, Rm. A11

### Graphic Communication

Digital Typography/Elec. Copy Prep with L. Donegan 7:40-9 AM Bldg. 10, Rm. 124

### History

Freedom/Equality in American History with J. Wilson 10:50-NOON Bldg. 06, Rm. 124  
The Holocaust with D. Krieger 11:10-NOON Bldg. 10, Rm. 226

### Music

Intro to Music Theory with A. Barata 8:10-9 AM Bldg. 45, Rm. 130  
Intro to Music Theory with A. Barata 9:10-10 AM Bldg. 45, Rm. 130  
Music Theory with M. Brammeier 12:10-1:20 PM Bldg. 45, Rm. 130  
Musicianship III with M. Brammeier 10:10-11 AM Bldg. 45, Rm. 126  
Musicianship VI with M. Brammeier 9:10-10 AM Bldg. 45, Rm. 101  
Music of Baroque/Early Classic with C. Swanson 12:10-1:20 PM Bldg. 45, Rm. 126  
Polyphonics with T. Davies 11:10-12 PM Bldg. 45, Rm. 218

### Philosophy

Social Ethics with L. Houlgate 8:10-9 AM Bldg. 21, Rm. 235  
Social Ethics with L. Houlgate 9:10-10 AM Bldg. 14, Rm. 253

### Theatre & Dance

Intro to Theatre with P. Malkin 9:30-10:40 AM Bldg. 44, Rm. 227



# Friday's Special Events

## Design Village

8 AM

### Poly Canyon

Students, from across the U.S. and Canada, competing in this unique and intensive three-day event must carry materials, related to the theme, "Sustain-A-Build," for their self-designed shelters up scenic Poly Canyon, build them, and live in them for three days and two nights. Visitors are invited to view the innovative accommodations on Friday from 2-4 pm and Saturday from 10 am-4 pm via a shuttle from the base of Poly Canyon Road. Free admission courtesy of the College of Architecture and Environmental Design.

## Cal Poly Rodeo

4:30 PM

### Rodeo Arena

Come join the Cal Poly Rodeo Club in a celebration of our western heritage at the 64th Annual Poly Rodeo. Top college athletes from the western United States will be competing in nonstop intercollegiate rodeo action Friday, Saturday, and Sunday of Cal Poly's Open House weekend. Come on down for a helping of western hospitality. Tickets—\$8, general; \$5, seniors, students, children under 5. Purchase at rodeo grounds, day of event.

## Cal Poly Baseball vs. Pacific

6 PM

### Baggett Stadium

See the Cal Poly Mustangs at their finest! General admission is \$5, seniors and youth, \$3 at the beautiful Cal Poly Sports Complex.

## Admitted Students' Casino Night

8-11 PM

### Recreation Center

All admitted students are invited to participate in the 7th Annual Casino Night. It is held to provide a safe, drug- and alcohol-free environment to allow admitted students to meet some of the Cal Poly population and soon-to-be classmates. There will be a live DJ and refreshments provided by Open House. Casino gaming tables will be available and chips can be redeemed for tickets which provide the opportunity to win one of many great prizes!

## Parents' Coffee House

8-10 PM

### The Avenue Dining Complex

Come and enjoy coffee and desserts while your students try their luck at Casino Night. This coffee house event is a chance to mingle with other parents and ask questions of current Cal Poly students. Hosted by the Week of Welcome and the Cal Poly Parent Program.

## Spotlight:

### 2003 Parade Winners

**Best Use of Theme:** Cal Poly Sailing Team

**Most Spirited:** Mustang Band

**Most Creative:** Rose Float

**Best Overall:** Week of Welcome (WOW)

## This Year's Parade Entrants

### On Campus:

Cal Poly Sailing Club  
Delta Sigma Phi  
Poly Goats  
Chi Delta Theta  
Sailing Team  
Filipino Cultural Exchange  
Rose Float Club  
Rodeo Club  
Week of Welcome  
Associated Students Inc.  
Cal Poly Equestrian Team  
Mustang Band  
Cal Poly Lion Dance Team  
Los Rancheros Dairy Club  
Tractor Pull Club  
Penguins Motorcycle Club  
Poly Escapes

### Community

New Rock 107.3  
San Luis MOMS Club  
Pugs in the Park  
KJUG 98.7FM  
Big Red Tours  
SiO Med Spa and Central Coast Laser Center  
Central Pacific Ski Club  
Wells Fargo Bank  
San Luis Ambulance Service Inc



**Mission:** To spread our enthusiasm and introduce new students to winter sports.

**We Are:** The largest youth oriented ski and snowboard club in the nation.

**We Do:** Winter big trip with over 500 students, 4 small trips, plus weekly events.

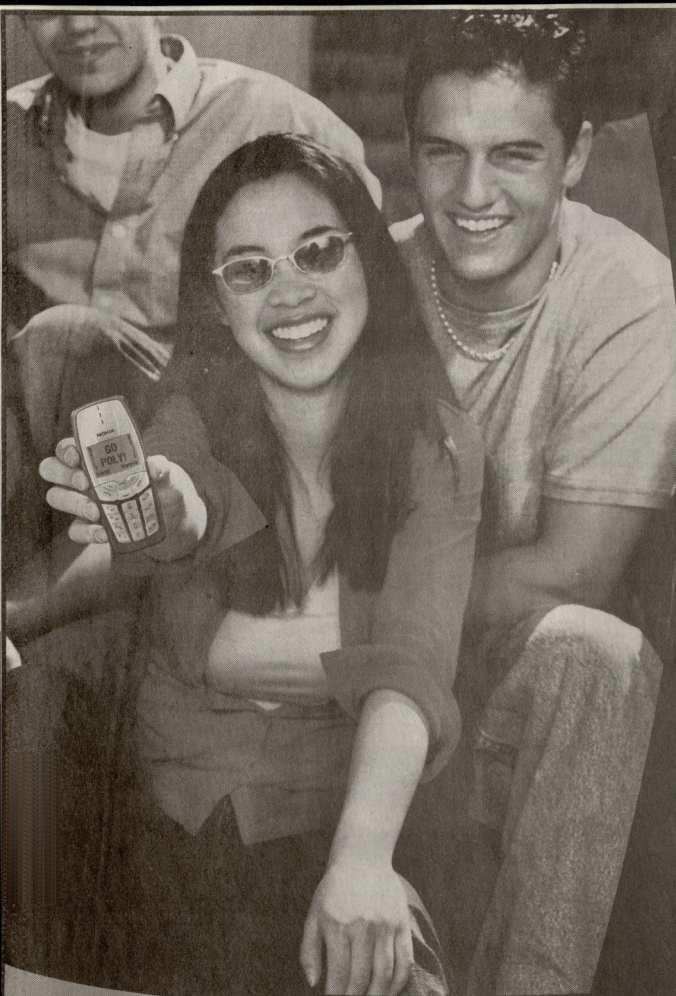




**NOW WITH  
THE M&M  
SHOW  
MORNINGS!**







## Special Offer for Cal Poly Students!

---

- **10% off**  
current  
monthly rates
- **Free incoming**  
text messages
- **Free phones**  
(with two-year agreement)
- **Best coverage**  
on campus

**Call Today!**

**805-543-0100**

**800-549-4000**

[www.cellularone-slo.com](http://www.cellularone-slo.com)

**CELLULARONE**

*More Calls. More Places.*

## Now at Mustang Express!



# Saturday's Student Resources



## Open House Information Booth 10 AM-4 PM

Dexter Lawn

Meet Open House Committee members, buy an event t-shirt, obtain event information.

## Campus Tours

Poly Reps will lead campus tours. All tours are walking tours of the campus that provide an overview of the University and its facilities. Tours will leave on the hour, every hour, from the Education Building steps between 11 AM and 1 PM (last tour leaving at 1 PM).

## Presentations and Sessions

**Housing and Residential Life** NOON, 2 PM

Sierra Madre Residence Hall (Bldg. 113)

**Parent Info Session**

**Housing and Residential Life** NOON, 2 PM

Yosemite Residence Hall (Bldg. 114)

**Student Info Session**

## Departments Open for Visit

**Admissions Office** 10 AM-2 PM

Bldg. 1, Rm. 206

**ASI Recreational Sports**

8:30 AM-7:30 PM

Recreation Center

Enjoy self-guided tours of the Recreation Center.

**Cal Poly Continuing Education**

10 AM-3 PM

Dexter Lawn

Come and check out the summer Spanish language programs in Spain and Mexico and the summer archaeological field school.

We'll be located at the Alumni Association hospitality booth.

**El Corral Bookstore**

9 AM-5 PM

University Union Plaza

Shop at our main store, located in the University Union, for all required and recommended courseware as well as a fully stocked student and office supply section, Tech Center with the latest computer hardware, software and peripherals, Cal Poly insignia clothing and gift section, General reference and reading books, magazines, seasonal gifts and greeting cards, health and beauty aids and snack foods.

**Housing and Residential Life**

10 AM-4 PM

Residence Halls

Tours of the residence halls are self-guided. Flyers and maps are available at the "Housing Info Center" located in front of Santa Lucia Hall (Bldg. 106). The Housing Office will be closed Saturday; all Housing staff will be located at the "Housing Info Center."

**Health and Counseling Services**

10 AM-4 PM

Bldg. 27

First aid and urgent medical care available.

**Parent Program Welcome Booth**

10 AM-3 PM

Dexter Lawn

Cal Poly Parent Program staff and parents of current students are available to answer questions and provide parent-to-parent perspectives about ways to support your student's success. The Parent Program fosters communication and partnership between and among parents and the University and provides ways for parents to be involved and provide feedback to the University's administration. Stop by and pick up our parent newsletter and handbook and sign up for our parent e-com service.

**Robert E. Kennedy Library**

10 AM-5 PM

Bldg. 35

## Spotlight: Poly Royal Parade Grand Marshals

Join us in honoring a group of our stars—Cal Poly alums who have helped our campus shine over the years by working on the planning committees of Open House and Poly Royal! We appreciate all of their contributions which helped Open House evolve into the campus showcase and celebration we now enjoy. Please help us acknowledge their many hours of service to the University, dedication, and willingness to so generously share their talents.



# Saturday's College Events

## College of Agriculture

### All Departments

Information Booth	All Day	Via Carta and Perimeter
Swanton Pacific Ranch Display	All Day	Bldg. 9, Farm Shop
Shuttle between Farm Shop and the Beef Unit, Horse Unit, and EHS Unit	All Day	Pick up at Farm Shop

### Agribusiness

Agribusiness Display	All Day	Bldg. 9, Farm Shop
Display with Emphasis on Agribusiness	All Day	Bldg. 10, Rm. 206
Learn about finance/appraisal, marketing, policy, and farm and ranch management.		

### Agricultural Education and Communication

Hands-On, Learn-By-Doing Demonstrations	All Day	Bldg. 9, Farm Shop
---	---------	--------------------

### Animal Science

Display Featuring New Technologies in Veterinary Medicine, Animal, Poultry Production, and Biotechnology	All Day	Bldg. 9, Farm Shop
Equine Embryo Transfer	11 AM-NOON	Equine Breeding Barn
Animal Reproduction and Fertilizer Display	All Day	Bldg. 32, Bldg. 9, Farm Shop
Embryo Manipulation	11:30 AM, 12:30 PM, 1:30 PM	Bldg. 10, Rm. 102
Cal Poly Dressage Team	11 AM-1 PM	Bldg. 32, Equine Center, Arena
Cal Poly Equestrian Team	11 AM-1 PM	Bldg. 32, Equine Center, Arena
Ranch Horse Enterprise Project	11 AM-1 PM	Bldg. 32, Equine Center

### Bioresource and Agricultural Engineering

Display Featuring BioResource and Agricultural Engineering	All Day	Bldg. 9, Farm Shop
Display Featuring Irrigation Technology	All Day	Behind Bldg. 8, north end
Showcasing senior projects, survey equipment, precision agriculture, and mechanical systems.		
Truck and Tractor Pull	1 PM	Crops Unit, Bldg. 17, Field across from Dairy Science

### Dairy Science

Display of Dairy Science Major	All Day	Bldg. 9, Farm Shop
Featuring the latest technology in the dairy industry.		
Dairy Cattle Fitting and Showing Contest	9 AM-NOON	Bldg. 18, Rm. 1
Students compete to determine the best at fitting and showing.		
Dairy Milking Parlor	11 AM, 11:30 AM, NOON	Bldg. 18, Rm. 1

### Earth and Soil Sciences

Earth and Soil Science Display	All Day	Bldg. 9, Farm Shop
Featuring innovation in land stewardship and enhancement of environmental quality.		

### Food Science and Nutrition

Food Science and Nutrition Display	All Day	Bldg. 9, Farm Shop
Learn about our food science and nutrition major's exciting research, community-based learning, student team activities, and enterprise projects.		
Cal Poly Chocolates Demonstration	10:30 AM-2 PM	Bldg. 24, Rm. 103
Nutrition Club: Body Composition & Diet Analysis Assessment	10:30 AM-2 PM	Bldg. 24, Rm. 113
Food Science Club: BBQ Sauce Production and Pilot Plant Tours	10:30 AM-2 PM	Bldg. 24, Pilot Plant



## College of Agriculture

### *Horticulture and Crop Science*

Horticulture and Crop Science Display

Display Featuring Insects and Pest Management

Fruit Science Displays

View grapes, citrus and avocados, and other deciduous fruits grown by horticulture students.

Guided Tours of Cal Poly Organic Farm

Community Flower Show

Sponsored by Pi Alpha Xi, the horticulture honorary society, flowers and plants grown by the local community on display.

Educational Displays on a Variety of Horticultural Topics

Play Miniature Golf on Real Creeping Bentgrass Green

Student Enterprise Project Sale

All Day

All Day

All Day

All Day

All Day

All Day

All Day

All Day

Bldg. 9, Farm Shop

Bldg. 11, Rm. 115, 118

Bldg. 11, Rm. 112

Bldg. 11, Rm. 112

Bldg. 11, Rm. 103

Bldg. 48

Behind EHS Unit

Poly Plant Shop

### *Military Science*

Climbing Wall

Humvee and Armored Vehicle Display

All Day

All Day

Dexter Lawn

Dexter Lawn

### *Natural Resources Management*

Displays and PowerPoint Presentation Featuring Forestry,

Natural Resources Management, and Environmental Management and Protection Majors.

Display of Recreation, Parks and Tourism Administration

Program major featuring a "Challenge Course."

Cal Poly Logging Team Live Demonstration

Featuring an axe-throwing contest for spectators.

All Day

All Day

10:30 AM-4 PM

Bldg. 9, Farm Shop

Bldg. 9, Farm Shop

Via Carta and N. Perimeter

### *Cal Poly Rodeo*

Rodeo

Come join the Cal Poly Rodeo Club in a celebration of our western heritage at the 64th Annual Poly Royal Rodeo. Top college athletes from the western United States will be competing in nonstop intercollegiate rodeo action Friday, Saturday, and Sunday of Cal Poly's Open House weekend. Come on down for a helping of western hospitality. Tickets—\$8, general; \$5 seniors, students, children under 5. Purchase at rodeo grounds on the day of the event.

Rodeo Dance at Madonna Inn

5 PM

Rodeo Arena

9 PM-1AM

Madonna Inn Expo Hall



## Cal Poly's 64th Annual Poly Royal Rodeo

**Friday, April 16th  
 Saturday, April 17th  
 Sunday, April 18th**

**At the Rodeo Arena, Mt. Bishop Rd.**

**Tickets:**  
**General Admission \$8**  
**Students and Seniors \$4**  
**Children under 10 Free**

Tickets available at the Cal Poly Ticket Office and at the gate.



# Saturday's College Events

## College of Architecture & Environmental Design

### All Departments

CAED Open House & Alumni Welcome	10 AM-4 PM	Bldg. 5, Rm. 212, Lobby
CAED Student Council Design Competition	10 AM-4 PM	Bldg. 5, Stair Court
CAED Student Work Exhibit, Solar Decathlon Exhibit, and Leon Phillips Art Exhibit	10 AM-4 PM	Gallery, Bldg. 5, Rm. 105
Walk-In Advising, CAED Advising Center	10 AM-4 PM	Bldg. 5, Rm. 212, 221
College Tours by Alpha Rho Chi	10 AM-4 PM	Bldg. 5, Lower Stair Court
Robert Hifumi Odo Memorial Scholarship Display	10 AM-4 PM	Bldg. 5, Rm. 212, Lobby
Design Village Competition—"Sustain-A-Build"	10 AM-4 PM	Poly Canyon
Design Village Free Shuttle Service	10 AM-4 PM	Poly Canyon Gate
Design Village Competition: Judging Day	All Day	Poly Canyon
Design Village Judging of Structures (Awards ceremony, Sunday @ 11am)	10 AM-2 PM	Poly Canyon
Hearst Lecture: Brian Alan Husting, AIA, "Special Places"	4-5:30 PM	Rotunda, Bldg. 3, Rm. 213

### Architectural Engineering

ArCE Labs and Student Work Exhibits	10 AM-5 PM	Bldg. 21, Rm. 122 B,C, D, E
Department Tours	11 AM, 1 PM, 3 PM	Bldg. 21, Rm. 122A
Material Testing Demonstrations	11:10 AM, 1:10 PM	Bldg. 21, Rm. 122A
ArCE Annual Alumni Luncheon *by reservation only	11:30 AM-1:30 PM	Bldg. 21, Courtyard

### Architecture

Analog-Digital Design + Visual Communication Studio	10 AM-1 PM	Bldg. 5, Rm. 204
High School Summer Career Workshop Exhibit	10 AM-5 PM	Bldg. 5, Rm. 212
Student Work Exhibits	10 AM-5 PM	Bldgs. 5 & 21

### City and Regional Planning

Student Work Display	10 AM-5 PM	Bldg. 34, Bldg. 251
Student Resource Center Exhibit	10 AM-5 PM	Bldg. 34, Rm. 167
Noise Workshop & Demonstration	11:30 AM, 1:30 PM	Bldg. 34, Rm. 134
Virtual Reality in San Luis Obispo	12:30 PM, 2:30 PM, 3:30 PM	Bldg. 34, Rm. 249
Alumni Reception and Launch of First Issue— <i>FOCUS Journal</i>	2-3 PM	Bldg. 34, Second Floor Hallway

### Construction Management

Educational Displays and Exhibits	10 AM-5 PM	Bldg. 21, Rm. 120A
Heavy Equipment Display	10 AM-5 PM	Front of Kennedy Library

### Landscape Architecture

Student Exhibits	10 AM-5 PM	Bldg. 34, South Wing, Upper Lobby, Halls and Rm. 210; South Dexter Patio
------------------	------------	--

### Spotlight: Open House History

The first open house event on campus, "Farmers' Picnic", began in 1904. By 1933 the event had evolved into a multiple day event known as Poly Royal. Featured events included a parade, livestock judging, agriculture shows, horticulture exhibits, and barbecues. Open House was born in 1994, four years after the last Poly Royal. Open House combines the best of Farmers' Picnic and Poly Royal traditions, in addition to new events, including Friday's Admitted Students' Preview Day, to create a premiere showcase weekend for the University.



## College of Engineering

*All Departments***Alumni Recognition Luncheon**

11 AM-12:30 PM

Bldg. 7

Alumni, faculty and friends of the college celebrate the achievements of our distinguished alumni. With welcoming remarks by the dean, awards presentations, and a delicious lunch buffet, everyone will enjoy renewing old acquaintances and making new ones in a festive atmosphere.

*Aerospace Engineering***Open Labs and Demonstrations**

10:30 AM-3 PM

Bldg. 7; Bldg. 4/Aero Hangar;  
Bldg. 58

*Civil and Environmental Engineering***Hospitality Room**

10:30 AM-NOON

Bldg. 13, Rm. 118

Alumni and conditionally admitted students: breakfast buffet with cinnamon rolls, coffee, and juice. Faculty will be available to answer questions.

*Computer Engineering***Hospitality Room**

10:30 AM-4 PM

Bldg. 20, Rm. 118

CPE faculty and students will be available to discuss the Computer Engineering Program. Refreshments will be served.

**RoboRodentia X**

1-4 PM

University Union, Chumash

The Cal Poly Institute of Electrical Engineers Computer Society (IEEE-CS) and the Computer Engineering Program present this annual event where robots, created by multidisciplinary student and community teams, compete to find and retrieve racquetballs in a large maze. Admission is free.

*Computer Science and Software Engineering***Hospitality Room**

11 AM-3 PM

Bldg. 14, Rm. 232

Talk with faculty and students. Light refreshments will be served.

*Electrical Engineering***Hospitality Room**

10:30 AM-4 PM

Bldg. 20, Rm. 111

Alumni, prospective students and parents, and campus visitors are invited to come by and enjoy free refreshments. Faculty and students will be on hand to answer your questions.

**Open Labs**

10:30 AM-4 PM

Bldg. 20

*Industrial and Manufacturing Engineering***Interactive Booth**

10 AM-4 PM

Dexter Lawn, Carnival Area

Students with information about departments, t-shirts, games, a talking horse, and a free, personally engraved keychain.

**Hospitality Room**

11 AM-4 PM

Bldg. 26, Rm. 103

Alumni, parents, current and prospective students, come by and enjoy free refreshments. Faculty and students will be on hand to answer your questions.

**Open Lab Tours**

11 AM and NOON

Dexter Lawn (meet at booth)

We will give a tour of the lab facilities and answer questions. There will be demonstrations and sample projects completed by IE students.

*Materials Engineering***Alumni Continental Breakfast**

9-11 AM

Bldg 12, Rm 107H

Alumni, spouses, and friends are invited to meet, mingle, and visit with faculty while enjoying a delicious continental breakfast hosted by the Materials Engineering Department in their Building 12 office.

*Mechanical Engineering***Hospitality Room**

11 AM-3 PM

Bldg. 13, Rm. 110

Alumni and friends, come by for refreshments and reminiscing with ME faculty.

**Open Labs**

11 AM-3 PM

Bldg. 13

Various ME labs and the machine shop will be open and running experiments.



# Saturday's College Events

## College of Liberal Arts

### All Departments

#### Students Booths and Exhibits

"Where Do We Go From Here"

Speakers panel on careers for liberal arts majors.

9 AM-4 PM  
10-11:30 AM

Dexter Lawn  
Christopher Cohan Center,  
Philips Hall

### Art and Design Department

#### Annual Student Juried Exhibit

10 AM-4 PM

Bldg. 34, Gallery

### Graphic Communication Department

#### Tours and Exhibits

10 AM-4 PM

Bldg. 26, Rm. 209

Press facility tours: Electronic Publishing Lab; Color & Quality Analysis Lab; Digital Imaging Lab; Printing Press Labs: lithography, gravure, flexograph, screen printing; Web Press Lab; Binding & Finishing Lab; Substrates, Inks & Toner Lab; Shakespeare Press Museum.

### Journalism Department

#### Tours and Exhibits

10 AM-4 PM

Bldg. 26, 2nd Floor

Cal Poly TV, *Mustang Daily*, KCPR radio, public relations display.

### Modern Languages & Literatures Department

#### Polylingual International Resource Center

10 AM-4 PM

Bldg. 12, Room 105A, PIRC Lab

#### CLA Multi-Media Lab

10 AM-4 PM

Bldg. 12, Rm. 105B

### All Departments

#### Readings by Cal Poly Award Winning Fiction

7-10 PM

Vista Grande Restaurant

#### Writers & Poets

### Music Department

#### Cal Poly Open House Concert

8 PM

Christopher Cohan Center

The Music Department celebrates Cal Poly's Open House by featuring many of its most popular musical organizations: the Chamber Orchestra, Wind Orchestra, University Jazz Band, and the Choirs. Everyone is invited to this popular concert designed to provide the audience with an evening of entertainment and variety. Ample parking is available! Tickets (\$12 and \$15 general—\$5 and \$7, students)

# Cell Phone Recycling

We support our communities and Cal Poly's Open House



## Cell Cycle LLC

A Cal Poly Graduate Company

cellinfo@cellularcycle.com

510-791-0439

### Recycling at your:

- Business
- Club
- Event
- Retail Store
- School

# www.cellularcycle.com



## College of Science and Mathematics

*All Departments*

College Information and Alumni Room  
College Advising Center Walk-In Advising  
Health Professions Office Peer Advising

10 AM-4 PM  
10 AM-NOON, 1:30-3 PM  
10 AM-NOON, 1:30-3 PM

Bldg. 25, Rm. 229  
Bldg. 52, Rm. 219  
Bldg. 52, Rm. 219

*Biological Sciences Department*

Hospitality and Alumni Room, Displays and Information  
Drop-In Question and Answer Session

10 AM-4 PM  
10 AM-4 PM

Bldg. 33, Lobby  
Bldg. 33, Lobby

*Chemistry and Biochemistry Department*

Student Research Poster Display  
Welcome Room, Info and Drop-In Q & A, Alumni Room  
Chemistry Magic Show  
Polymers and Coatings Lab

10 AM-4 PM  
NOON-4 PM  
1 PM, 3 PM  
10 AM-2:30 PM

Bldg. 25, Rm. 125, Atrium  
Bldg. 25, Rm. 125, Atrium  
Bldg. 52, Rm. B5  
Bldg. 52, Rm. B7

*Kinesiology Department*

Introduction to the Kinesiology Department  
Tour of Kinesiology Facilities and Labs in Progress  
Discussion Groups in Concentrations  
"Things You Should Know" Q & A Session  
Drop-In to Ask Questions

10-10:30 AM  
10:30-11:30 AM  
11:30 AM-NOON  
NOON-12:30 PM  
12:30-2 PM

Bldg. 43A Rm. 150  
Bldg. 43A, Rm. 150  
Bldg. 43A, Rm. 150  
Bldg. 43A, Rm. 150  
Bldg. 43A, Rm. 451

*Mathematics Department*

Welcome and Information Room  
Math Exhibits, Posters and Puzzles  
Math Placement Exams (No Preregistration Required)

10 AM-2 PM  
10 AM-4 PM  
11 AM (NO LATE ENTRY)

Bldg. 38, Rm. 204  
Bldg. 38, Rm. 204  
Bldg. 38, Rm. 204

*Physics Department*

Hospitality Room, Student Advising and Q & A  
Society of Physics Students Demonstrations and Mini Talks

10 AM-2 PM  
10 AM-2 PM

Bldg. 52, Rm. D2  
Bldg. 52, E-Wing

*Statistics Department*

Department and Program Information  
Student Research and Poster Display

10 AM-4 PM  
10 AM-4 PM

Bldg. 25, Rm. 229  
Bldg. 25, Rm. 107F

## Thai Cuisine



777 Lockheed Blvd.  
(Foothill Plaza)  
San Luis Obispo,  
CA 93405  
Tel: (805) 544-9777  
Fax: (805) 544-7778  
Open 7 Days

**Royal Thai Restaurant**

*alpha Kappa Delta Phi*

THE LARGEST NATIONWIDE  
ASIAN INTEREST  
SORORITY

*Come visit our food booth*

[www.sloakdphi.com](http://www.sloakdphi.com)



# Saturday's College Events

Orfalea College of Business

## Industrial Technology

Hosting open lab demonstrations. An instructor will be present to answer questions.

**Industrial Technology Department Open Labs**

**Textiles Testing Lab**

Demo of ultraviolet light protection testing.

**Plastics Processing Lab**

**Electronics Lab**

Demo of programmable logic controllers.

**Packaging Design**

**Presentations and Senior Project Examples**

**CAD Lab Open for Viewing**

**Metals Processing Lab**

Demonstrations of building student projects, videos, and displays of class projects.

**Packaging Testing**

10 AM-2 PM

10 AM-2 PM

10 AM-2 PM

10 AM-2 PM

10 AM-2 PM

10 AM-2 PM

10 AM-2 PM

10 AM-2 PM

10 AM-2 PM

Bldg. 21

Bldg. 38, Rm. 133

Bldg. 21, Rm. 131

Bldg. 21, Rm. 132

Bldg. 21, Rm. 132P

Bldg. 21, Rm. 133

Bldg. 21, Rm. 134

Bldg. 21, Rm. 135

Bldg. 21, Rm. 13

## Thai-rific RESTAURANT

*SLO County's Premiere Thai Restaurant Since 1985*

208 Higuera Street  
San Luis Obispo, CA  
(805) 541-THAI

7965 El Camino Real  
Atascadero, CA  
(805) 462-THAI

## Spotlight: Main Stage

**Main Stage Performances Include:**

Cal Poly Ballroom Dance Club  
Cal Poly Lion Dance Team  
Cal Poly Salsa Club  
Cal Poly Stunt Team  
Cal Poly Swing Club  
Chi Delta Theta  
Imagen Y Espiritu Ballet Folklorico  
Indian Students' Association  
Mercy On-Campus  
Mustang Band  
Pilipino Cultural Exchange  
Sigma Omega Nu  
Social Dance Club  
Team Eat the Meat  
Vietnamese Student Association

**Main Stage MCs:**

Olga Berdial  
Lacie Grimshaw  
Lei-lani Keelan  
Chrissy Roth  
Matt Sorgenfrei

MADE FRESH DAILY • SMOOTH & CREAMY • MADE FRESH DAILY •

## Welcome to the neighborhood.

Join us at Cold Stone Creamery for the Ultimate Indulgence.

860 Higuera Street  
San Luis Obispo  
(805) 545-0926  
(Between Chorro & Morro Streets)

**COLD STONE CREAMERY**

Creations, Cold Stone Originals, Creation names, and images portrayed are trademarks of Cold Stone Creamery Inc. ©2003 www.coldstonecreamery.com

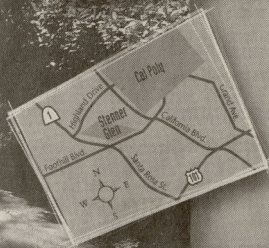
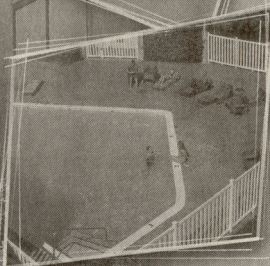
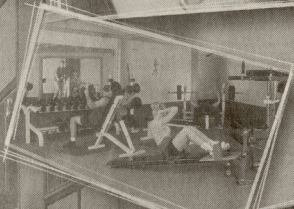
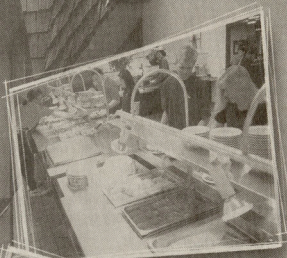
MADE FRESH DAILY • SMOOTH & CREAMY • MADE FRESH DAILY •



# Stenner Glen

STUDENT LIVING AT ITS FINEST

- Cafeteria
- Menu Choices
- Fitness Center
- Swimming Pool
- Tutoring
- Study Hall
- Computer Lab
- Resident Assistants
- Uniformed Security
- Planned Activities
- Utilities Paid
- Direct TV
- High Speed Internet
- Quiet Buildings
- Laundry Rooms
- Recreation Center
- Large Screen TV



Virtual Tours of Suites Available  
at [www.stennerglen.com](http://www.stennerglen.com)

1050 Foothill Boulevard  
San Luis Obispo, CA 93405

Leasing Office: (800) 734-1744

email: [stennerglen@stennerglen.com](mailto:stennerglen@stennerglen.com)  
web: [www.stennerglen.com](http://www.stennerglen.com)





# Saturday's Special Events

## Poly Royal Parade

9 AM

University Union @ Grand Avenue

The Poly Royal Parade is back for Open House weekend! Campus clubs and organizations, as well as community members, will be participating. The route will be along Perimeter Road on the Cal Poly campus and will end at Kennedy Library to kick-off Opening Ceremonies at Dexter Lawn.

## Main Stage

10 AM-4 PM

Dexter Lawn

Festivities begin with Opening Ceremonies and end with the presentation of booth-judging awards. Campus clubs and organizations will showcase their talents from dancers to music and demonstrations. The schedule of events will be posted around campus; check out some of our stars!

## Open House Carnival

10:30 AM-4 PM

University Union Plaza

Carnival is a special section of booths set aside for interactive activities. Kids of all ages are welcome to participate in all sorts of games ranging from dunk tanks to win-a-fish. There will be various types of carnival food such as popcorn, cotton candy, and other snacks.

## Design Village Competition

10 AM-4 PM

Poly Canyon

Students from across the U.S. and Canada competing in this unique and intensive three-day event, must carry materials related to the theme "Sustain-A-Build" for their self-designed shelters, up scenic Poly Canyon, build them, and live in them for three days and two nights. Visitors are invited to view the innovative accommodations from 10 am-4 pm via a shuttle from the base of Poly Canyon Road. Free admission courtesy of the College of Architecture and Environmental Design.

## Concession Booths and

10:30 AM-4 PM

Campuswide

## Club Demonstrations

Campus clubs and organizations come out to show off and sell stuff.

## Agricultural Engineering Society

### Truck and Tractor Pull

1 PM

Across from Crops Unit

This year marks the 26th Truck/Tractor Pull held in conjunction with Poly Royal/Open House. Competitors from the western United States will compete in the following pulling classes: injected, blown, and unlimited mini-modified tractors; country modified and pro-modified 4WD and 2WD trucks; single, multi-engine, and superstock tractors. New competition pullers designed and built at Cal Poly will be unveiled! Tickets are \$7 for adults, \$3 for children under 10 and are available at the BRAE building on Friday and at the gate on Saturday. Proceeds benefit the BRAE student scholarship fund.

## Cal Poly Rodeo

5 PM

Rodeo Arena

Come join the Cal Poly Rodeo Club in a celebration of our western heritage at the 64th Annual Poly Royal Rodeo. Top college athletes from the western United States will be competing in nonstop intercollegiate rodeo action Friday, Saturday, and Sunday of Cal Poly's Open House weekend. Come on down for a helping of western hospitality. Tickets—\$8 general, \$5 seniors, students, children under 5. Purchase at rodeo grounds on the day of the event.

## RoboRodentia X

1-4 PM

University Union, Chumash

The Cal Poly Institute of Electrical and Electronic Engineers Computer Society (IEEE-CS) and the Computer Engineering Program present this annual event where robots, created by multidisciplinary student and community teams, compete to find and retrieve racquetballs in a large maze. Admission is free.

## Cal Poly Baseball vs. Pacific

1 PM

Baggett Stadium

See the Cal Poly Mustangs at their finest! General admission, \$5—seniors and youth, \$3. At the beautiful Cal Poly Sports Complex.

## Chemistry Magic Show

1 and 3 PM

Bldg. 52, Rm. B5

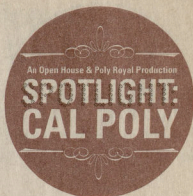
## Ballet Folklorico "Mexico de Noche"

7 PM

Cal Poly Theater

Come and experience the richness and beauty found within the Mexican culture. Enjoy an evening filled with traditional Mexican dance, music, colors, and costumes. Seven colorful, regional dances will be performed, including the regions of Jalisco and Nayarit. Tickets are available at the Christopher Cohan Center ticket office.





### *Saturday Night at the Hop*

Lesson, 7-8 PM  
Dance, 8-10 PM

Location TBA

The Cal Poly Swing Club invites families of perspective students to a fun, safe, and sober way to spend a Saturday night. Enjoy a free swing lesson and dancing. Lesson, free; dance, \$2.

### *Music Department's Open House Concert*

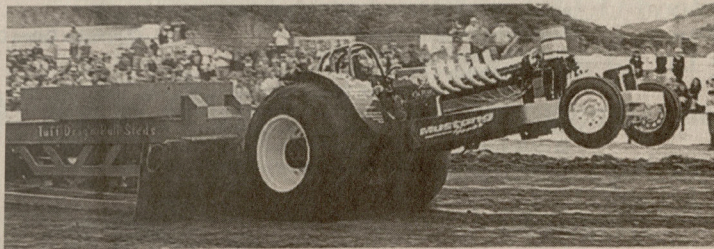
8 PM

Christopher Cohan Center

The Music Department celebrates Cal Poly's Open House by featuring many of its most popular musical organizations: the Chamber Orchestra, Wind Orchestra, University Jazz Band, and the Choirs. Everyone is invited to this popular concert designed to provide the audience with an evening of entertainment and variety. Ample parking is available! Tickets (\$12 and \$15 general—\$5 and \$7, students) may be ordered online from the Christopher Cohan Center ticket office or by calling 756-2787.

*Save the Date: Open House 2005*  
*April 15, 16, 17, 2005*

## 2004 Poly Royal Truck and Tractor Pull



**Saturday, April 17, 2004**

**Field C-36 across from Crops Unit**

**Adults \$7 Children under 10 \$3**

**Brought to you by the Agricultural Engineering Society**

An Open House & Poly Royal Production  
**SPOTLIGHT:  
 CAL POLY**

# Sunday's Special Events

Sunday is the perfect day to continue to acquaint yourself with Cal Poly. As the weekend winds down you can catch the Cal Poly Rodeo, see a baseball game, or participate in the Open House Golf Classic, and much more!

8 AM

## Open House Golf Classic

This years Open House Golf Classic is taking place at the beautiful Avila Beach Golf Resort. Tee time is 8 AM.

To receive information and an entry form for the Open House 2005 (April 17) Golf Classic, e-mail contact information to: [open-house@calpoly.edu](mailto:open-house@calpoly.edu).

Avila Beach Golf Resort

10 AM-MIDNIGHT

## Robert E. Kennedy Library

### Design Village Awards Ceremony

See the winners of this unique competition.

Bldg. 35

Poly Canyon

11 AM-NOON

## El Corral Bookstore is Open

The place to shop for all required and recommended courseware as well as a fully stocked student and office supply section; Tech Center with the latest computer hardware, software, and peripherals; Cal Poly insignia clothing and gift section; general reference and reading books, magazines; seasonal gifts and greeting cards; health and beauty aids, and snack foods.

University Union Plaza

11 AM-2 PM

1 PM

## Cal Poly Rodeo

To experience one of Cal Poly's longest running traditions, visit the 64th Annual Cal Poly Rodeo. See Cal Poly students participate in events like bronc riding, calf roping and barrel racing. Tickets—\$8, general; \$5 seniors, students, children under 5. Purchase at the rodeo grounds on the day of the event.

Rodeo Arena

1 PM

## Cal Poly Baseball vs. Pacific

See our Cal Poly Mustangs at their finest! General admission is \$5, seniors and youth \$3, at the beautiful Cal Poly Sports Complex.

Baggett Stadium

2:30 PM

## All-State Wind Orchestra Concert

The state's finest young musicians are chosen by recorded audition to participate in this event. Robert W. Smith will conduct the Festival Wind Orchestra. Vibraphonist Charlie Shoemaker will be the special guest soloist with the Festival Jazz Band. Tickets (\$12 and \$15 general—\$10 and \$13 seniors—\$5 and \$7 students) may be ordered online from the Christopher Cohan Center ticket office or by calling 805.756.2787

Christopher Cohan Center





## You can join the Credit Union Of Choice — The Golden 1 Credit Union

Faculty, staff, and students of Cal Poly, San Luis Obispo are eligible to join the credit union of choice, The Golden 1. Just ask anyone — which credit do you think of first? The majority answer, The Golden 1. The Golden 1 offers members many great benefits, including the Student Pack\* for full-time students.

The Student Pack offers the following for full-time students:

- Low-rate VISA® Card with overdraft protection and no cosigner required
- Checking account with no monthly service charge
- ATM or ATM/Check Card
- Golden 1 Online<sup>SM</sup> Account Access

Join today at The Golden 1 San Luis Obispo Office at 852 Foothill Boulevard.

1-877-GOLDEN 1

\* Subject to approval. Must be approved for all products to receive Student Pack services.

NCUA

This credit union is federally insured by the National Credit Union Administration.

**the Golden 1**  
CREDIT UNION

California's Leading Credit Union™  
golden1.com

# EL CORRAL OFFERS 3 LOCATIONS TO SERVE YOU

1



**EL CORRAL  
BOOKSTORE**

A NONPROFIT ORGANIZATION SERVING CAL POLY SINCE 1913  
[www.elcorralbookstore.com](http://www.elcorralbookstore.com)

University Union

2

**CAL POLY  
books**  
UNIVERSITY SQUARE

870 Foothill Blvd. open 7 days a week

3

**CAL POLY  
DOWNTOWN**

959 Higuera St. open 7 days a week

- *Low prices on textbooks*
- *More USED books*
- *One stop shop for all your student supplies at competitive prices*
- *Online at*  
**[www.elcorralbookstore.com](http://www.elcorralbookstore.com)**

Visit [www.elcorralbookstore.com](http://www.elcorralbookstore.com)

24 hours a day!

All locations  
open all weekend!



# Open House thanks all of our

Accounting Club (CPAC)  
Agriculture Business Management/ National Marketing  
AIESEC  
Alpha Chi Omega  
Alpha Chi Sigma  
Alpha Epsilon Pi  
Alpha Gamma Omega Fraternity  
Alpha Gamma Rho  
Alpha Kappa Delta Phi  
Alpha Kappa Psi  
Alpha Omicron Pi  
Alpha Phi  
Alpha Phi Omega  
Alpha Pi Sigma Sorority Inc.  
Alpha Psi Omega  
Alpha Rho Chi  
Alpha Tau Alpha  
Alpha Zeta  
Amateur Radio Club  
American Chemical Society  
American Foundry Society  
American Indian Society of Engineering and Science  
American Indian Students Association  
American Institute of Aeronautics and Astronautics  
American Institute of Architecture Students  
American Marketing Association  
American Society of Mechanical Engineers  
Amtgard  
ASHRAE, Air Conditioning Club  
ASI Craft Center  
ASI Recreational Sports  
ASI Rep  
Asian American Christian Fellowship  
Associated Students in Planning  
Associated Students of Construction Management  
Associated Students Inc. (ASI)  
Association For Computing Machinery  
Audio Engineering Society  
Badminton  
Bahai Club  
Ballroom Dance Club, Cal Poly  
Beta Theta Pi Fraternity  
Billiards Club, Cal Poly  
Biomedical Engineering Society  
BioResource and Agricultural Engineering Dept  
Biotechnology Club  
Bowling Team, Cal Poly  
Cal Poly Rotaract  
Cal Poly Stunt Team (Cheerleading)  
Campus Advocacy & Mentorship Program  
Campus Crusade for Christ  
Chess Club, Cal Poly

Chi Delta Theta  
Chicano Commencement Committee  
Child Development Association  
Children Using Language to Understand R Earth  
Chinese Christian Fellowship  
Chinese Cultural Club  
Chinese Student Association Lion Dance  
Christian Science Organization  
Circle K Club  
Club 34  
College of Architecture and Environmental Design Student Council  
College of Engineering Ambassadors  
College of Liberal Arts  
College of Liberal Arts Ambassadors  
College of Science and Math Ambassadors  
College Republicans, Cal Poly  
Colleges Against Cancer  
Collegiate Future Farmers of America  
Collegiate Sport Program  
(The) Community CENTER at Cal Poly  
Construction Specification Institute  
Crops Club  
Culture  
Cutting and Reining Club  
Dance Team, Cal Poly  
Delta Chi Fraternity  
Delta Sigma Phi  
Delta Sigma Pi  
Delta Upsilon  
Democratic Club, Cal Poly  
Design-Build Institute of America  
Dressage Team  
Earth, Soil and Water Conservation Club  
Engineering Student Council  
Equestrian Team, Cal Poly  
Fencing, Cal Poly  
Financial Management Association (FMA)  
Food Science Club  
Friends of the Shakespeare Press Museum  
Friends of WOW Alumni Program  
Gamma Phi Beta  
Gays, Lesbians, Bisexuals United (GLBU)  
God For All Cultures  
Golf Association, Cal Poly  
Greek Life  
Habitat for Humanity  
HBSA  
Hellenic-American Organization  
Hillel  
Historical Society  
Imagen Y Espiritu Ballet Folklorico de Cal Poly  
Indian Students Association  
Industrial Technology Society  
Information Systems Association  
Institute of Electrical & Electronic Engineering Computer Society  
Electrical and Electronic Engineers Computer Society  
Institute of Industrial Engineers



# participating clubs...



International Club  
Juggling Club, Cal Poly  
Kappa Alpha Theta  
Kappa Chi Fraternity  
Kappa Sigma Fraternity  
Kinesiology Club  
Korean American Student Association (KASA)  
Lambda Chi Alpha  
Lambda Phi Epsilon  
Landscape Industries Club  
Latinos in Agriculture  
Linux Users Group, Cal Poly  
Logging Team, Cal Poly  
Los Lecheros Dairy Club  
Lutheran Student Movement  
Masters of Business Administration Association  
Mat Pica Pi  
Materials Engineering Student Societies  
Math Club  
Men's Water Polo  
Mercy on Campus  
Mexa  
Minna No Anime  
Muslim Student Association  
Mustang Band  
National Association of Home Builders  
Newman Catholic Club  
Nu Alpha Kappa Fraternity  
Nutrition Club  
Omega Xi Delta Fraternity  
Orchesis Dance Company  
Penguins Motorcycle Club  
Persian Students of Cal Poly  
Phi Delta Theta  
Phi Kappa Psi  
Phi Sigma Kappa  
Pi Kappa Alpha  
Pilipino Cultural Exchange  
Political Science Club  
Poly Christian Fellowship  
Poly Escapes  
Poly Goats  
Poly Pack  
Poly Reps  
PolyBemani  
PolyCon  
Poultry Club  
Power Engineering Society  
Progressive Student Alliance  
Psi Chi  
Public Relations Student Society of America (PRSSA)  
Recreation Administration Majors  
Recycle Yourself - An Association to Promote Organ Donor Awareness  
Renewable Energy Club  
Robotics Club  
Rodeo Club, Cal Poly  
Roller Hockey, Cal Poly  
Rose Float Club  
Rugby  
Running Thunder  
Sailing Club, Cal Poly  
Sailing Team  
Salsa Club, Cal Poly  
SCARAB  
Scuba Club, Cal Poly  
Sigma Alpha Sorority  
Sigma Gamma Tau  
Sigma Kappa  
Sigma Nu Fraternity  
Sigma Omega Nu  
SLO CORE Ultimate  
Social Science Club  
Society for Technical Communication  
Society of American Foresters  
Society of Automotive Engineers  
Society of Black Engineer and Scientists  
Society of Civil Engineers  
Society of Environmental Engineers  
Society of Hispanic Professional Engineers  
Society of Petroleum Engineers  
Society of Women Engineers  
Solar Car Club  
Space Systems, Cal Poly  
Speech Communication Club  
Statistics Club  
Structural Engineers Association of California, Student Chapter  
Student Community Services  
Student Life & Leadership  
Studio Art Club  
Sustainable Agriculture Club  
Swing Club, Cal Poly  
Tau Beta Pi  
Tau Kappa Epsilon  
Teachers' Society  
Team Eat the Meat  
Television, Cal Poly  
Theta Chi  
Tomodachi Kai (Japanese Cultural Exchange)  
Tractor Pull Club  
Tri Beta Biological Society  
Triathlon Team, Cal Poly  
Undergraduate Law Association  
University Christian Community  
University Honors Program  
Veterinary Science Club, Cal Poly  
Vietnamese Student Association  
Vines to Wines  
Wakeboard Club, Cal Poly  
Water Ski Team, Cal Poly  
Week of Welcome  
Wheelman, Cal Poly  
Wildlife Club  
Within  
Women's Awareness, Cal Poly  
Women's Empowerment Team, Cal Poly



# SESLOC

FEDERAL CREDIT UNION

## *Your On-Campus Credit Union*

As a Cal-Poly student, you're eligible to join SESLOC. That can mean a lifetime of financial advantages!



- ATM - \$5 withdrawals
- VISA check card
- Online account access
- Student loans
- VISA credit card
- Low rate car loans
- Free checking with no minimum balance
- \$1 overdraft fee for transfers from savings.
- No fee for line of credit overdraft

Located in the University Union, across from El Corral Bookstore.



805/543-1816 ♦ 805/227-1030

[www.sesloc.org](http://www.sesloc.org)



# Aida's

UNIVERSITY BOOK EXCHANGE, INC.

Off campus bookstore serving  
Cal Poly and Cuesta College



**GREAT BUYBACK PRICES  
AND LOWEST PRICES ON  
NEW & USED TEXTBOOKS!**

**973 Foothill Blvd SLO**  
**(805) 541-5854**

on the corner of Foothill and Santa Rosa



# Guide to Cal Poly Colleges/Majors



## *College of Agriculture*

Agricultural Business  
Agricultural Science  
Agricultural Systems  
Management  
Animal Science  
BioResource and Agricultural Engineering  
Engineering  
Crop Science  
Dairy Science  
Earth Science  
Environmental Horticultural Science  
Food Science  
Forestry and Natural Resources  
Fruit Science  
Nutrition  
Plant Protection Science  
Recreation Administration  
Soil Science

## *College of Architecture and Environmental Design*

Architecture  
Architectural Engineering  
City and Regional Planning  
Construction Management  
Landscape Architecture

## *College of Engineering*

Aerospace Engineering  
Civil Engineering  
Computer Science  
Electrical Engineering  
Environmental Engineering  
General Engineering  
Industrial Engineering  
Manufacturing Engineering  
Materials Engineering  
Mechanical Engineering

## *College of Liberal Arts*

Art and Design  
Child Development  
English  
Graphic Communication  
History  
Journalism  
Liberal Studies  
Modern Languages and Literature  
Music  
Philosophy  
Political Science  
Psychology  
Social Sciences  
Speech Communication  
Theater Arts

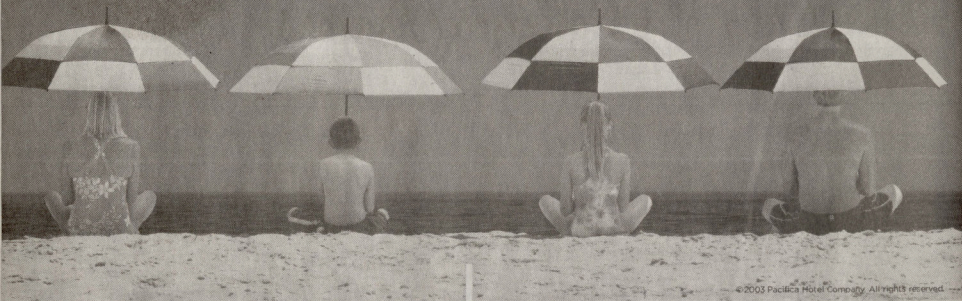
## *College of Science and Mathematics*

Biological Sciences  
Biochemistry  
Chemistry  
Ecology and Systematic Biology  
Kinesiology  
Mathematics  
Microbiology  
Physics  
Physical Science  
Statistics

## *Orfalea College of Business*

Business Administration  
Economics  
Industrial Technology

# Far from routine.



© 2003 Pacifica Hotel Company. All rights reserved.

## Close to everything.



**CAMBRIA  
BEST WESTERN  
FIRESIDE INN**

A charming inn overlooking Moonstone Beach.  
**(800) 409-5094**



**SAN LUIS OBISPO  
HOLIDAY INN  
EXPRESS**

A newly renovated hotel near all the attractions of the central coast.  
**(800) 913-2224**



**PISMO BEACH  
SPYGLASS INN**  
Right on the cliffs overlooking the ocean.  
**(800) 333-0198**



**PISMO BEACH  
COTTAGE INN  
BY THE SEA**  
A quaint, seaside retreat overlooking the ocean.  
**(800) 914-6662**



**PISMO BEACH  
SANDCASTLE INN**  
On the sand at Pismo Beach.  
**(800) 913-6668**

**Pacifica**  
HOTEL COMPANY





# Cal Poly Open House Would Like to Thank Our Sponsors:



## *Gold Sponsors:*

Associated Students Inc.  
Campus Dining  
CellularOne  
Chela Financial Services  
Clear Channel Radio  
Pacifica Hotel Company  
Pepsi-Cola  
Stenner Glen Apartments  
Valencia Apartments

## *Silver Sponsors:*

Aida's University Books  
El Corral Bookstore  
Golden One Credit Union  
Hearst Castle  
SESLOC Financial Credit Union

## *Bronze Sponsors:*

Cell Cycle LLC

## *Business & Golf*

## *Tournament Sponsors:*

Alpha Kappa Delta Phi  
Central Pacific Ski Club  
Cold Stone Creamery  
Hobee's California Restaurant  
Mercy On-Campus  
Oxford Suites Resort  
Royal Thai  
State Farm Insurance  
Thai-rific Restaurant

## *Friends of Open House:*

Cost Plus Inc.  
Cowboy Cookie N' Grub  
Downtown Centre Cinema  
F. McClintocks  
Golden China Restaurant  
Mission Community Bank  
New Frontiers Natural Marketplace  
Rodkey Theatres  
See's Candy  
Wells Fargo Bank

## *Website Sponsors*

El Corral Bookstore  
Virtual SLO

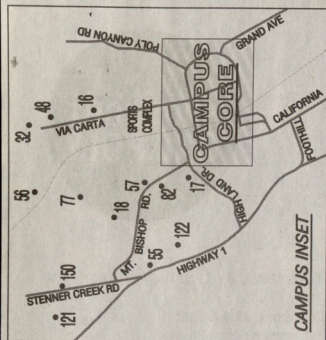
# The 2004 Open House Committee Would Like to Thank:

Liz Adams  
Anthony Aelits  
Shelley Aleshire  
Eileen Amaral  
Ag Ambassadors  
Alison Anderson  
Deby Anderson  
Rick Anderson  
Cheryl Andrus  
Kristin Ansari  
President Warren J. Baker  
Ken Barclay  
Olga Berdial  
Carolyn Biedinger  
Cindee Bennett-Thompson  
Anya Bergman  
Michelle Broom  
Dwayne Brummett  
Cal Poly Admissions  
Cal Poly Mustang Band  
Cal Poly Parents' Program  
Campus Dining and Catering  
Josh Carroll  
Marlene Cartter  
Jeff Cheal  
Kathryn Cole  
Diana Cozzi

Alan Chusman  
Catherine Cramp  
Kathy Daniels  
Donna Davis  
Will Deviny  
Erika Diaz  
Lorraine Donegan  
Rojean Dominguez  
Downtown Association  
Joette Eisengart  
Facilities Services  
Leland Felsenthal  
Ann Fryer  
Brian French  
Jenny Fuchs  
Kim Gannon  
Lacie Grimshaw  
Polly Harrigan  
Sandra Harris  
Sgt. Lori Hashim  
Ben Johnson  
Dr. Rick Johnson  
Carolyn Jones  
Theresa Kaiser  
Lei-lani Keelan  
Andrea Kerns  
Amber Kidd

Leo Ko  
Denise Lazar  
Gabrielle Lea  
Jo Ann Lloyd  
Logos Ink  
Manny Magana  
Mora Massuda  
Christin McBride  
Nikile McCollum  
Leslie McKinley  
Dr. Cornel Morton  
Mustang Graphics  
Ellen Notermann  
Nicky Nickelsen  
Lisa Nunes  
Albert Nunez Jr.  
Maryann O'Brien  
Lynn Ogden  
Nancy Osorio  
Doug Overman  
Dr. Mary Pederson  
Sarah Pahlow  
Christian Parreira  
Kathleen Pennington  
Poly Reps  
Dave Ragsdale  
Ron Regier

Daniel Richter  
Nicole Ripsom  
Harriet Ross  
Chrissy Roth  
Terri San Filippo  
Monica Schechter  
Angela Schuck  
SCLC Committee  
June Serjeant  
Dave Smiley  
Matt Sorgenfrei  
Jill St. John  
Rochelle Stallings  
Patricia Stewart  
Student Life & Leadership  
Ben Thompson  
Lori Trowbridge  
Elizabeth Tuggle  
University Graphic Systems  
UU Building Services  
UU Reservations  
Heidi Velasco  
Week of Welcome Board  
Week of Welcome Team  
Peter Wilt



128



**CAL POLY**  
SCHOOL OF CALIFORNIA POLYTECHNIC  
SAN LUIS OBISPO  
WWW.CALPOLY.EDU

**CAMPUS CORE**  
JANUARY 2003

SCHOOL LEGEND	Symbol	Description
Parking Areas	■	Parking Areas
General Building	□	General Building
One-way Traffic	→	One-way Traffic
Motorcycle	↖	Motorcycle
Limited Access	○	Limited Access
Disabled	○	Disabled

From US 101  
Cal Poly Exit

From US 101  
California Exit



# DIRECTORY OF CAL POLY FACILITIES

## Alphabetical with Aliases

## BUILDING NAME, NUMBER, GRID LOCATION

Administration	1	D 6	Dining Complex	19	E 5	Jeanine Hall	161	A 2	Residence Hall, Sequoia Hall	108	D 1
Advanced Technology Laboratories	7	D 6	Education	2	E 5	Jeanine Hall	116	F 3	Residence Hall, Shasta Hall	100	C 3
Agricultural Engineering Shop	8A	C 4	El Corral Bookstore	85	E 5	Julian A. McPhee University Union	65	D 5	Residence Hall, Sierra Madre	113	F 7
Agricultural Engineering	8	C 4	Engineering	13	D 2	Kennedy Library, Robert E.	35	D 3	Residence Hall, Tenaya Hall	110	E 7
Bioscience and Environmental Health and Safety	11	C 4	Engineering East Faculty Offices	20A	E 4	Lassen Hall	104	C 6	Residence Hall, Trinity Hall	105	D 7
Agricultural Sciences	11	C 4	Engineering East Faculty Offices	20A	E 4	Library, Robert E. Kennedy	35	D 3	Residence Hall, Whitney Hall	103	C 6
Agriculture, Alan A. Erhart	10	D 4	Engineering South	40	E 4	Manufacturing	36	C 4	Residence Hall, Yosemite	114	F 8
Air Conditioning	12	E 3	Engineering West	21	E 4	Mathematics and Science	24	C 3	Robert E. Kennedy Library	35	D 3
Alan A. Erhart Agriculture	10	D 4	English	22	D 4	McPhee University Union	65	E 5	Robert E. Mott Physical Education	42	F 5
Albert B. Smith Alumni and Conference Center	28	F 4	Environmental Health and Safety / Housing Warehouse	80	C 5	Meats Unit, Aballator	39	A 6	Rodeo Arena	77	Inset
Architecture & Environmental Planning	5	D 3	Environmental Horticultural Science	48	Inset	Modoc Hall	119	D 2	Rose Float Shop	78	B 5
ARDFCA	4	D 3	Enhart Agriculture	10	D 4	Mott Physical Education, Robert E.	42	F 5	Sandwich Factory	18A	E 6
Autia Residence	129	E 6	Excelsa Ranch	127	off map	Muir Hall	107	D 6	Santa Lucia Hall	106	D 6
Bugle Stadium	160	A 2	Eugene & Rachel Boon Dairy Science Complex	18	Inset	Music Center, H. P. Davidson	45	E 6	Science	52	D 5
Basical Stadium	160	A 2	Facility Services / Resolving	70	C 5	Mustang Stadium	61	F 2	Science North	53	C 5
Beef Cattle Evaluation Center	15	Inset	Warehouse	70	C 5	Natatorium	48	E 3	Science, Fisher	33	D 5
Beef Unit	16	A 3	Faculty Offices East	25	D 5	North Mountain Residence Halls	100	C 6	Sequoia Hall	108	D 6
Bioresource and Agricultural Engineering	8	C 4	Faculty Offices North	9	B 4	Old Power Plant	76	E 3	Serrano Ranch	125	off map
Bioresource and Agricultural Engineering	8A	C 4	Farm Shop	47	B 4	PAC	6	E 6	Shasta Hall	100	C 6
Bioresource and Agricultural Engineering Shop	161	A 2	Feed Mill	23	D 5	Pakmar Hall	102	C 6	Sheep Unit, Cheds Ranch	121	Inset
Bob Jensen Field	3	E 2	Fisher Science, Clyde P.	23	B 5	Parker Ranch	122	Inset	South Main Hall	113	F 8
Business	181	A 2	Food Processing	24	C 3	Parking Structure, Grant Avenue	130	F 6	Softball Stadium	161	A 2
CAD Research Center	1177	G 3	Foundation Administration	15	C 5	Phonon's Residence	128	E 2	South Mountain Residence Halls	105	D 6
Call Poly Theatre	44	E 6	Warehouse	82	Inset	Performing Arts Center	6	E 6	Sports Complex Baseball Stadium	160	A 2
Champus Market	24	C 3	Frank E. Pilling Building	14	E 4	Relaxation Ranch	123	off map	Sports Complex Softball Stadium	161	A 2
Cinema Hall	115	F 3	Fremont Hall	109	E 7	Regional Education Classrooms	43A	F 5	Student Services	124	F 3
Cheds Ranch	121	A 7	Grand Avenue Parking Structure	130	F 6	Pilling Building	14	E 4	Swine Unit	56	Inset
Cheds Ranch Residence	121	Inset	Graphic Arts	26	E 4	Police Station	74	C 4	Tenaya Hall	110	E 7
Child Development Lab	38	D 4	Gymnasium, Crandall	60	E 3	Poly Science	118U	D 2	Theater	44	E 6
Children's Center	133	G 3	Gymnasium, Mott	42	F 5	Police Science Instructional Center	150	Inset	Transportation Services	71	C 6
Chomo Creek Ranch	126	off map	H. P. Davidson Music Center	45	E 6	Power Plant	50	E 4	University Dining Complex	19	E 5
Christopher Coltan Center	6	E 6	Hanger	4	B 3	President's Residence	41	F 4	University Police	65	E 5
Clock Tower Building	3	D 3	Heaton Hall	117	G 3	Recreation Center	43	F 5	Veterinary Hospital	57	Inset
Clyde P. Fisher Science Hall	33	D 5	Hillcrest	81	D 6	Research Development Center	70	C 5	Visitor Information	134	G 8
Computer Science	60	E 3	Horse Unit	32	Inset	Residence Hall, Diablo Hall	4	B 3	Vista Grande Restaurant	112	E 7
Cops Unit	17	C 1	Horse Unit	29	A 6	Residence Hall, Fremont Hall	101	C 6	Waterfall, Doctor Building	34	D 3
Dairy Products Technology Center	18A	Inset	Housing Office	30	A 6	Residence Hall, Lassen Hall	104	C 6	Warehouse, State Receiving	139	off map
Dairy Science	18	Inset	Housing Warehouse / Environmental Health and Safety	80	C 5	Residence Hall, Muir Hall	107	D 6	Waters Ranch	70	C 3
Dairy Science Milking Parlor	18	Inset	Indoor Pool, Natatorium	46	E 3	Residence Hall, Palomar Hall	102	C 6	Whedding	103	C 6
Doctor Building, Walter F.	34	D 3			Residence Hall, Santa Lucia Hall	106	D 6	Yosemite Hall	114	F 8	



*Notes*



*Notes*



