

# Acknowledgments

*The California State University, Fresno Catalog is prepared under the supervision of the Assistant Vice President for Academic Affairs, J. Leonard Salazar.*

*Editor:*  
Margala C. Woods

*Curriculum Editor:*  
Ruth B. Thornton

*Graphic Design:*  
Priscilla D. Helling  
Instructional Media Center

*Planning and Printing Operations:*  
Fred Relyea  
Office of the State Printer

*Photographers:*  
James Kenney  
Craig Maddux  
Don Priest

*Selected photographs appear through the courtesy of:*  
Carolyn Skei  
Public Information Office

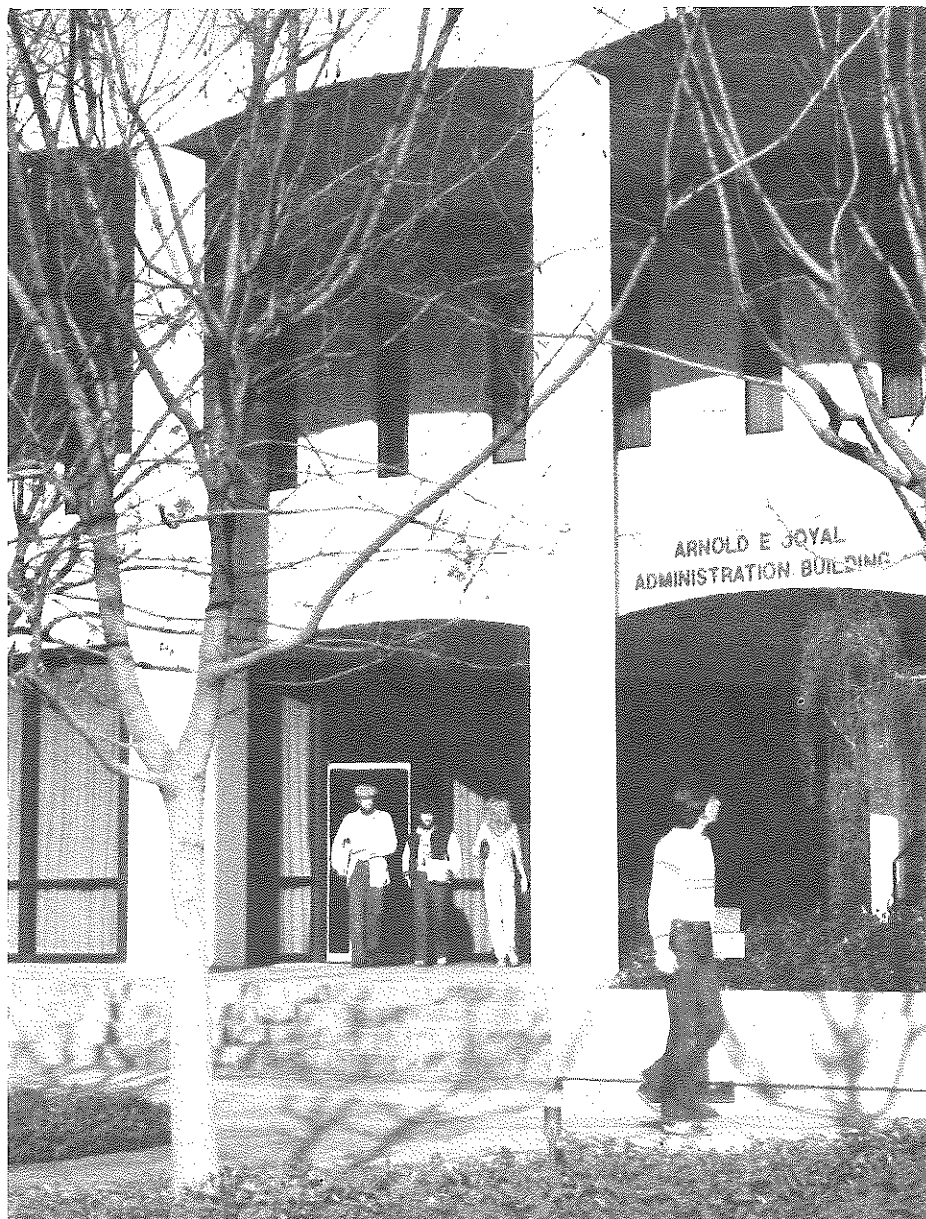
Instructional Media Center  
Robert Downing  
Rod Duddy

*Front Cover Photo:*  
Wymond W. Eckhardt

*Back Cover Photo:*  
James Kenney

*Index:*  
Sue Hefner  
Henry Madden Library

*Production Assistant*  
Julie Penn



## Please note:

Although every effort has been made to assure the accuracy of the information in this catalog, students and others who use this catalog should note that laws, rules, and policies change from time to time and that these changes may alter the information contained in this publication. Changes may come in the form of statutes enacted by the Legislature, rules and policies adopted by the Board of Trustees of The California State University, by the Chancellor or designee of The California State University, or by the President or designee of the institution. Further, it is not possible in a publication of this size to include all

of the rules, policies and other information which pertain to the student, the institution, and The California State University. More current or complete information may be obtained from the appropriate department, school, or administrative office.

Nothing in this catalog shall be construed, operate as, or have the effect of an abridgment or a limitation of any rights, powers, or privileges of the Board of Trustees of The California State University, the Chancellor of The California State University, or the President of the campus. The Trustees, the

Chancellor, and the President are authorized by law to adopt, amend, or repeal rules and policies which apply to students. This catalog does not constitute a contract or the terms and conditions of a contract between the student and the institution or The California State University. The relationship of the student to the institution is one governed by statute, rules, and policy adopted by the Legislature, the Trustees, the Chancellor, the President and their duly authorized designees.

**Vol. LIV April 84 No. 3**

One of a series of administrative catalogs published four times a year in January, March, May and September, by California State University, Fresno, Shaw and Cedar Avenues, Fresno, CA 93740. Second class postage paid at Fresno, California. (USPS 210240)

**POSTMASTER: Send address changes to Office of Admissions, California State University, Fresno, Shaw and Cedar Avenues, Fresno, CA 93740**