

Testing Services

Student Affairs
Office of Testing Services
Joyal Administration, Room 218
(209) 294-2457
Director, J. Richard Arndt

Taking a test may not be your favorite way to pass the time away, but test taking is very much a part of student life on a university campus. Many students take tests to "get in," others take tests to "get out." It is the overall goal of the Office of Testing Services to effectively and accurately measure your academic aptitudes and personal attributes as required or deemed desirable by the California State University system regulations, faculty, and your own personal needs and interests.

Our professional staff includes a test officer and a psychometrist, both of whom have special educational backgrounds and training, emphasizing tests and measurement, research, and computer applications. We work closely with other offices and faculty to offer you the following services:

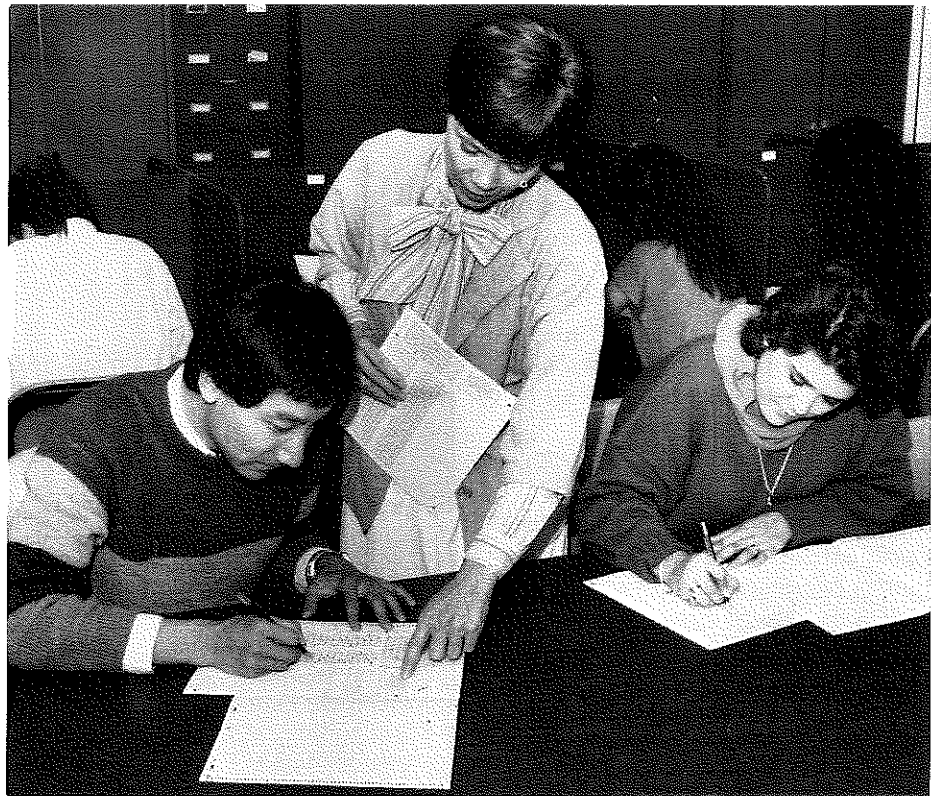
Personal and Career Testing

Several psychological tests designed to measure vocational career interests, aptitude and achievement, and personality characteristics are available. If these are of interest to you, see a counselor in the Counseling Center for a referral if you have personal concerns or a counselor in the Career Development and Employment Services Office if you are interested in career testing.

Undergraduate Entrance Examinations

Your application for admission to CSU, Fresno, may require scores from the S.A.T. or A.C.T. While most students take the S.A.T. or A.C.T. on regular national testing dates, the office schedules special times during the year when you can take the A.C.T.

Testing Services also offers the Test of English as a Foreign Language (TOEFL), which is required of most international students seeking admission to the university.



Required Tests

Testing Service has information about tests you may be *required* to take, such as the CSU English Placement Test (E.P.T.) and the Entry Level Mathematics Test (E.L.M.), and the Upper Division Writing Examination (U.D.W.E.).

Graduate School Testing

This office also handles the administration of many nationally given tests, such as the Graduate Record Examination (G.R.E.), Law School Admission Test (L.S.A.T.), Medical College Admission Test (MCAT), the Test of English as a Foreign Language (TOEFL), the Graduate Management Admission Test (G.M.A.T.), the California Basic Educational Skills Test (CBEST), the National Teacher's Examination (N.T.E.), and others.

Test Scoring

An instructional test scoring service aids faculty in the development, scoring, and analysis of objective tests used in the classroom.

Consultative Services

Within the limits of available time, the staff provides assistance to students, faculty, or other university departments in the areas of test development and analysis research design, statistical analysis, test evaluation, and computer applications related to the aforementioned activities.

For more information about tests and services, stop by the Office of Testing Services and ask the people who work with tests the most—Ramiro U. Estalilla, Jr., secretary; Phyllis Redfield, psychometrist; William P. Stock, test officer.