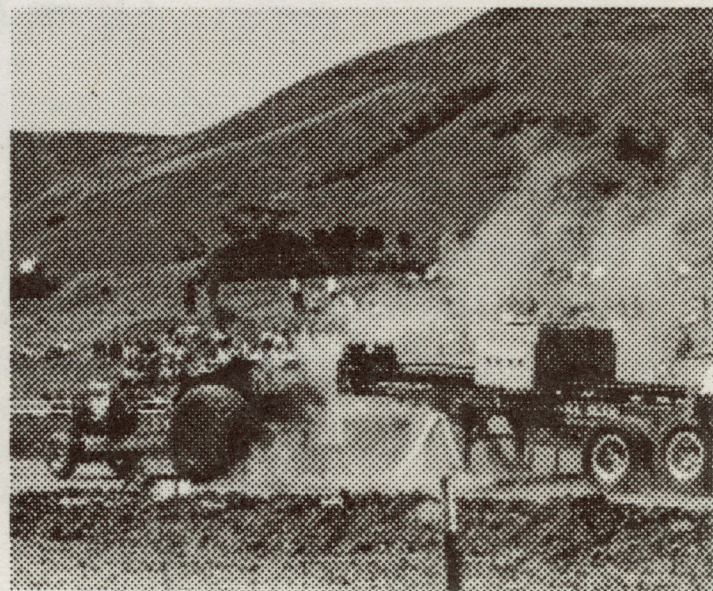


April 19, 1997
4th Annual
Cal Poly Open House

California Polytechnic
State University
San Luis Obispo





Welcome!

Welcome to San Luis Obispo and Cal Poly's 4th annual Open House. Today's event is the final product of many hours of hard work and dedication by students, faculty, staff and administrators.

Whether you are a parent, student, alumni, friend of the university, or a member of the San Luis Obispo community we are sure this year's Open House has something to offer for everyone.

Open House is a time for Cal Poly students to show everyone their university. This year we are using the theme "Beyond Your Wildest Dreams" to showcase Cal Poly. You can visit exhibits and educational displays put on by more than 200 student clubs and organizations.

Special events of all kinds are planned for you today. Kids of all ages are sure to have fun at the carnival. Experience the Tractor Pull and the Cal Poly Spring Rodeo, and take time out to watch Cal Poly student organizations perform on the Mainstage.

Enjoy Open House! We hope today is an experience that goes "Beyond Your Wildest Dreams."

Cindy Entzi
1997 Open House Chairperson

Open House Loop

Please follow the "Loop" signs throughout the campus to help you see everything offered at Open House. All club booths and exhibits are located on the Open House Loop and it also provides easy access to the colleges and departments. Start your journey anywhere, and guaranteed, when you return you will have seen it all.

Events and Festivities

Carnival

Don't miss the Cal Poly Open House Carnival – it's bigger and better than last year! Stop by and treat yourself to food, entertainment, music, games, and more hosted by over 20 Cal Poly clubs and organizations. The Carnival Area is located on the baseball field next to the library.

Dart Throw • Bird-Tac-Toe • Bounce House • Fish Bowl Toss
Sumo Wrestling • Face Painting • High Striker • Clowns
Wacky Portrait Booth • Cotton Candy • Human Bowling

Special Events

<i>Time</i>	<i>Event</i>
2:00, 5:00	Cal Poly Rodeo at Rodeo Arena
1:30	Tractor Pull by Agricultural Engineering Society at Horse Track
12:00-2:00	Radio Transmitter Hunt by IEEE and HKN
TBA	Sports Club Council Sponsored Concert at the Rec Center
8:00pm	Cal Poly Wind Orchestra and Jazz Bands Concert at the Performing Arts Center

Main Stage Schedule

<i>Time</i>	<i>Event</i>
9:30	Opening Ceremonies
10:15	Cal Poly Cheer
10:30	Vietnamese Student Association - Dances
11:00	Pilipino Cultural Exchange - Dances and Choir
11:30	Ballet Folklorico Imagen y Espiritu de Cal Poly
12:00	Mustang Band and Instep
12:45	Armenian Student Association - Dance
1:00	Hispanic Business Student Association - Mariachi Music
1:30	Indian Students Association - Dance
2:00	Studies in the Old & New Testament - Gospel Music
2:30	Ballet Folklorico Imagen y Espiritu de Cal Poly
3:00	Alpha Psi Omega Dramatic Club - Performances
3:30	Closing Remarks, Announcements of Prize Winners, CFFA Speech and Award Presentation, and Cal Poly Accounting Club Announcements
4:30	Chinese Students Association - Lion Dance



Booth Locations

Stop by an Open House Info Booth or check out the maps along the "Loop" for booth locations of participating clubs and organizations.

G = General Concessions

F = Food Concessions

C = Carnival Participant

S = Special Event

Club Name

G C	Association of Environmental Professionals
	African American Student Union
F	Agribusiness Management Club
	Agricultural Communicators of Tomorrow
G S	Agricultural Engineering Society
G	Agricultural Student Council
	Air Conditioning and Refrigeration
FCS	Alpha Chi Sigma Professional Chemistry Fraternity
F	Alpha Gamma Omega Fraternity
F	Alpha Gamma Rho Fraternity
GFC	Alpha Kappa Delta Phi Sorority

Club Name

GFC	American Marketing Association
GF	American Medical Student Association
G C	American Society of Mechanical Engineers
GF	Armenian Students Association
	ASI Children's Center
G	ASI Craft Center
	ASI Outings - "Moving Mountains"
	ASI Program Board
	Asian American Christian Fellowship
GF	Asian United Interest
G	ASM International
G	Associated Students in Planning
	Associated Students Incorporated
GF	Associated Students of Construction Management
	Association for Worksite Health Promotion
	Association of Environmental Professionals
C	Badminton Club
F	Ballet Folklorico Imagen Y Espiritu de Cal Poly
G	Beta Beta Beta Biological Honor Society
GF	Boots-N-Spurs
G	CAHPERD
FC	Cal Poly Accounting Club
S	Cal Poly Army ROTC
	Cal Poly Chamber Orchestra
S	Cal Poly Plan
F	Cal Poly Sailing
GF	Cal Poly Ski & Snowboard Team
GF	Cal Poly Ski Club
G	Cal Poly Teacher's Society
	Cambodian Awareness Association
G	Cultural Architecture Student Association

Stop by the ASI Craft Center Booth and see what's happening this year. The Craft Center was the 1996 Open House 1st Place Booth Winner.

F	Alpha Omicron Pi
F	Alpha Phi Omega
F	Alpha Psi Omega Dramatic Fraternity
G	Alpha Rho Chi
C	Alpha Zeta
F	Alternative Energy Club
F S	American Chemical Society
	American Foundry Society
GF	American Indian Science and Engineering Society
GF	American Institute of Aeronautics and Astronautics
GF	American Institute of Architecture Students

Booth Locations

Stop by an Open House Info Booth or check out the maps along the "Loop" for booth locations of participating clubs and organizations.

G = General Concessions

F = Food Concessions

C = Carnival Participant

S = Special Event

Club Name

GF	CFFA
F	Chi Delta Theta
GF	Chicano Commencement Committee
GF	Chinese Christian Fellowship
F	Chinese Culture Club
	Chinese Students Association
C	Circle K International
CS	Club 34 (Art & Design)
	Club Photo
	College of Engineering Ambassadors
G	College of Liberal Arts Student Council
G	College of Science and Mathematics Student Council
G	College Republicans
G S	Computer Society (IEEE)
FC	Crops Club
GF S	Cutting and Reining
F	Delta Chi
F	Delta Sigma Phi Fraternity
GFC	Delta Sigma Pi
GF	Design Village Club
	Disabled Students Unlimited
G	Engineering Student Council
GFC	Environmental Horticulture Club
G S	Eta Kappa Nu Honor Society
G	Farmhouse Fraternity
	Fencing Club
G	Field Hockey Club
F	Financial Management Association
	Food Science Club
	Gamma Phi Beta Sorority
	Gay Lesbians Bisexuals United
F	Global Student Ministry
G	Golf Club
	Gymnastics Club
GF	Health Careers Opportunity
GF	Hillel
F	Hispanic Business Student Association

Club Name

	History Club
F	Human Resource Management Association

Don't forget to stop by Cal Poly ROTC's vehicle display. They've brought numerous tanks, trucks, and helicopters to Open House for you to see.

	IHC - Special Events
GF S	IME Department and Clubs
	APICS
	AFS
	APM
	OR
	IIE
	SME
F	Indian Students Association
F	Industrial Technology Society
GF	Information Systems Association
G S	Institute of Electrical and Electronics Engineers
G	International Business Club
F	Investment Club
F	Italian Club (Circolo Italiano)
FC	Kappa Alpha Theta
FC	Kappa Chi Fraternity
	Kappa Kappa Psi
F	Kappa Sigma
G	KCPR Boosters
F	Lambda Chi Alpha
	Lambda Phi Epsilon
GF	Lambda Pi Eta
F	Latinos in Agriculture
G	Logging Team



Booth Locations

Stop by an Open House Info Booth or check out the maps along the "Loop" for booth locations of participating clubs and organizations.

G = General Concessions

F = Food Concessions

C = Carnival Participant

S = Special Event

Club Name

F Los Lecheros
Mat Pica Pi
G C Math Club
GF MBA Association

Take a trip over to the Computer Society (IEEE) booth. They're displaying Robo-Rodentia, a competition for maze-crawling robots.

GF Men's Lacrosse Club
G Men's Water Polo
GF Minna No Anime
F Minorities in Agriculture, Natural Resources, and Related Sciences
F Movimiento Estudiantil Xicano de Aztlan
F Muslim Students Association
GF National Agri-Marketing Association
G National Organization for Women
Natural Resource Club
F Nu Alpha Kappa
GF Nutrition Club
F Omega Xi Delta
Panhellenic
F Peer Health Teams
G C Penguins Motorcycle Club
C Pep Band (Mustang Marching Band)
Phi Delta Theta
FC Phi Sigma Kappa
GF Pi Kappa Alpha
G Pi Tau Sigma - Mechanical Engineering Honor Society
S Pilipino Cultural Exchange

Club Name

GF Polo Club
G Poly Christian Fellowship
S Poly Goats 4-Wheel Drive Club
GF Poly Ink
G Polyhymnia - Philosophy Club
F Psychology and Human Development Club
GF Recreation Administration Majors
S Rodeo Club
G C Roller Hockey Club
FCS Rose Float Club
GF Running Thunder
Santa Lucia / North Mountain Residence Halls
F Scarab
Science and Math Are Really Terrific
GF Scuba Club
G Senior Cabinet
FC Sequoia Hall
Society for Hispanic Advocates for Health
F Sigma Alpha
F Sigma Alpha Epsilon
F Sigma Chi
Sigma Gamma Tau

Be sure to check out the Rose Float Club and their award winning Rose Parade Float. Cal Poly ingenuity at work!

Sigma Kappa
GF Sigma Nu Fraternity
F Sigma Omega Nu
F Sigma Phi Epsilon Fraternity
FC Sigma Pi Fraternity

Booth Locations

Stop by an Open House Info Booth or check out the maps along the "Loop" for booth locations of participating clubs and organizations.

G = General Concessions
F = Food Concessions

C = Carnival Participant
S = Special Event

Club Name

- G Sigma Tau Delta
- G Society for Future Physical Therapists
- G Society for the Advancement of Management
- G Society of American Foresters
- G C Society of Automotive Engineers
- Society of Black Engineers and Scientists
- G Society of Civil Engineers
- G Society of Environmental Engineering
- GF Society of Hispanic Professional Engineers
- Society of Women Engineers
- GF Soils Club / Soil and Water Conservation Society
- GF Spanish Club
- G Sports Car Club
- S Sports Club Council
- GF Structural Engineers Association of California
- G Student Community Services
- Studies in Old and New Testament
- GF Take Back the Night
- Tau Beta Pi
- F Tau Kappa Epsilon
- Technical Communication Certificate Program
- FC Tenaya Hall

Club Name

- GF Tomodachi Kai
- G Triathlon Club
- F S Trinity Hall
- C Ultimate Frisbee Sports Club
- FC University Christian Community
- University Singers Club
- Veterinary Clinic
- GFC Veterinary Science Club
- F Vietnamese Student Association

Don't miss taking a walk through Student Community Service's maze of activities.

- G Vines to Wines
- Volleyball (Mens)
- G Water Ski Club
- C Week of Welcome Orientation Program
- G Wheelmen
- G Wildlife Club
- G Women's Lacrosse Club
- Yosemite Hall
- F Zeta Chi Epsilon
- F Zeta Phi Beta Sorority



MAIL BOXES ETC.



College of Agriculture

Dept./Time	Event	Location
COLLEGE		
all day	Information Booth	Via Carta & Perimeter
all day	Swanton Pacific Ranch Display	Next to Bldg 11
10-11:30	Alumni and Faculty Brunch	Ag Circle (in tent)
AGRIBUSINESS		
all day	Department Display	10-206
ANIMAL SCIENCE		
all day	Department Display	10-100
all day	Embryo Manipulation Demo	11-307
9:00-1:00	Beef Cattle Showing	Beef Pavilion
8:00-4:00	Horse Show	Horse Unit
BIOLOGICAL RESOURCE AND AGRICULTURAL ENGINEERING		
all day	Department Displays: Irrigation, Senior Projects, Farm Machinery, Survey Equip.	Behind Bldg 8
all day	Antique Engine and Tractor Display	North end Bldg 8
1:30	Truck and Tractor Pull	Cal Poly Airstrip
DAIRY SCIENCE		
all day	Dairy Cattle Showing	Dairy Show Pavilion
ENVIRONMENTAL AND HORTICULTURAL SCIENCE		
10:00-4:00	Community Flower Show	11-103
10:00-4:00	Landscape Design Display	11-102
10-11:30, 1:-3	Tours of EHS Unit every 1/2 hour	Bldg 48
all day	Senior Project Display	48 - lab A
10:00-3:00	Plant Care Seminar	48 - lab B
10:00-3:00	Educational Display Horticultural Topics	Greenhouse Corridor
FOOD SCIENCE AND NUTRITION		
10:00-3:00	Pilot Plant Tours	Bldg 24
10:00-3:00	Body Fat Analysis	24-113
SOIL SCIENCE		
all day	Morro Bay Display, Student Displays, Research Projects, Peace Corps	52-05, 07, 12
CAL POLY RODEO		
12:00, 5:00 pm	Cal Poly Rodeo	Rodeo Arena

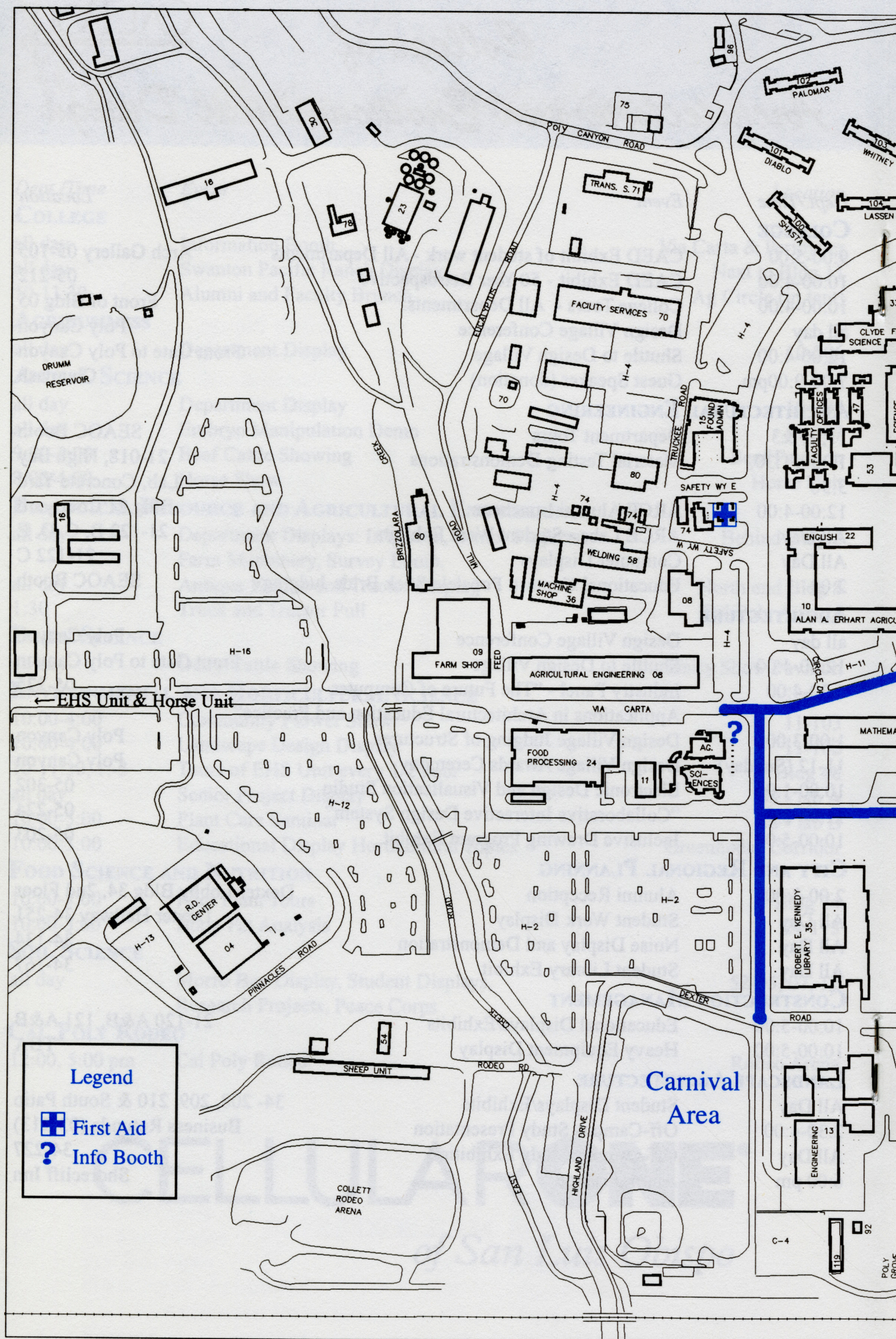
CELLULARONE®

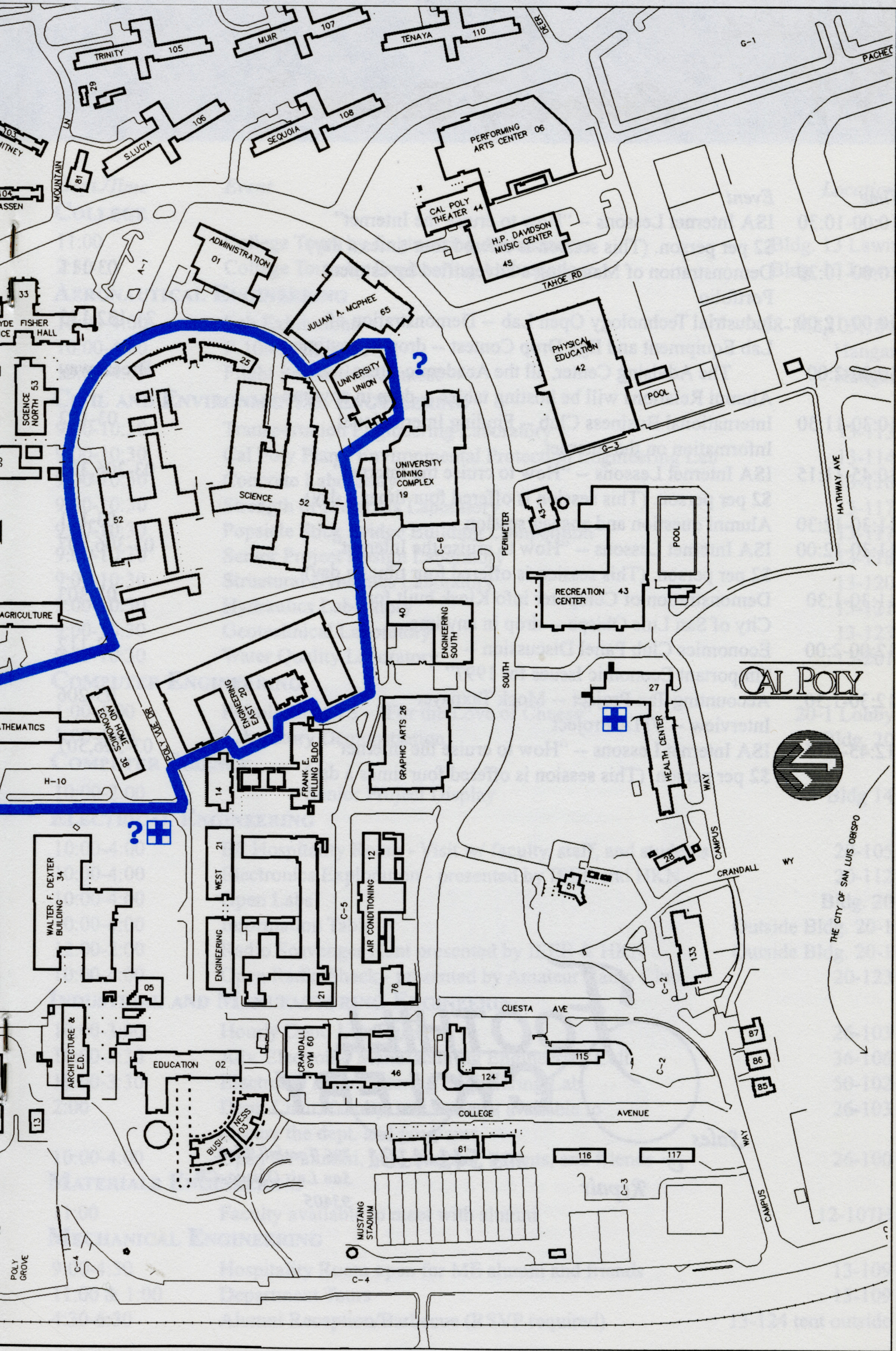
of San Luis Obispo

College of Architecture and Environmental Design

CAL POLY

<i>Dept./Time</i>	<i>Event</i>	<i>Location</i>
COLLEGE		
9:00-5:00	CAED Exhibit of student work - All Departments	Arch Gallery 05-105
10:00-4:00	CAED Exhibit - 50 Year Retrospective	05-212
10:00-4:00	College Tours - All Departments.	Front of Bldg 05
all day	Design Village Conference	Poly Canyon
12:00-4:00	Shuttle to Design Village	Front Gate to Poly Canyon
7:00-9:00pm	Guest Speaker (donation)	Chumash
ARCHITECTURAL ENGINEERING		
11, 1, &3	Department Tours	SEAOC Booth
11:30, 1:30, 3:30	Material Testing Demonstrations	21-018, High Bay Lab, Concrete Yard
12:00-4:00	ARCE Alumni Luncheon	Bldg 21 Courtyard
All Day	ARCE Labs - Student Work Exhibits	21-122 B, C, D, E
All Day	Computer Displays	21-122 C
2:00	Educational Contest: Popsicle Stick Bride Judging	SEAOC Booth
ARCHITECTURE		
all day	Design Village Conference	Poly Canyon
12:00-4:00	Shuttle to Design Village	Front Gate to Poly Canyon
2:30-4:00	Industry Panel - "The Future of Computer Applications in Architectural Education and Practice"	05-225
1:00-3:00	Design Village Judging of Structures	Poly Canyon
11-12 (Sunday)	Design Village Awards Ceremony	Poly Canyon
10:00-1:00	Electronic Design and Visualization Studio	05-302
11:00-2:00	"Collaborative Interactive Design System"	05-224
10:00-5:00	Inclusive Drawing Program Exhibit	05-203
CITY AND REGIONAL PLANNING		
2:00-3:00	Alumni Reception	Dexter Lobby Bldg 34, 2nd Floor
All Day	Student Work Display	Dexter Hallway 34-251
All Day	Noise Display and Demonstration	34-134
All Day	Student Library Exhibit	34-167
CONSTRUCTION MANAGEMENT		
10:00-5:00	Educational Displays/Exhibits	21-120 A&B, 121 A&B
10:00-5:00	Heavy Equipment Display	TBA
LANDSCAPE ARCHITECTURE		
All Day	Student Displays/Exhibits	34- 208, 209, 210 & South Patio
2:30-4:00	Off-Campus Study Presentation	Business Rotunda (03-213)
All Day	Off-Campus Study Exhibition	34-227
6:00 pm	Alumni Banquet	Shorecliff Inn





CAL POLY



THE CITY OF SAN LUIS OBISPO



College of Business

<i>Time</i>	<i>Event</i>	
10:00-10:30	ISA Internet Lessons -- "How to cruise the Internet" \$2 per person. (This session is offered four times a day)	
10:00-10:30	Demonstration of Managing a Diversified Investment Portfolio	03-111
10:00-12:00	Industrial Technology Open Lab -- Demonstration of Lab Equipment and Egg Drop Contest -- drop in anytime	21-132,135
10:00-2:00	The Advising Center, all the Academic Areas, and Alumni Relations will be hosting tables -- drop in anytime	Breezeway
10:30-11:30	International Business Club -- Finding International Information on the Internet	03-112
10:45-11:15	ISA Internet Lessons -- "How to cruise the Internet" \$2 per person. (This session is offered four times a day)	03-306,307
11:30-12:30	Alumni question and answer session	03-111
11:30-12:00	ISA Internet Lessons -- "How to cruise the Internet" \$2 per person. (This session is offered four times a day)	03-306,307
11:30-1:30	Demonstration of Computer info Kiosk built for City of San Luis Obispo -- drop in anytime	03-303
12:00-2:00	Economics Club Panel Discussion -- "Important Economic Issues for 1997"	03-112
12:30-1:30	Accounting Tax Project -- Mock Taxpayer Interview -- VITA Project	03-206
12:45-1:15	ISA Internet Lessons -- "How to cruise the Internet" \$2 per person. (This session is offered four times a day)	03-306,307

**FOOTHILL
CYCLERY**

Sales
•
Repair

805 541-4101 796 Foothill Blvd.
San Luis Obispo, CA
93405

College of Engineering

<i>Dept./Time</i>	<i>Event</i>	<i>Location</i>
COLLEGE		
11:00	College Tours by Engineering Ambassadors	Bldg. 13 Lawn
2:30	College Tours by Engineering Ambassadors	Bldg. 13 Lawn
AERONAUTICAL ENGINEERING		
10:00-4:00	Lab Exhibitions	58-102,103,104
10:00-4:00	F-104 Exhibition	Hangar
10:00-4:00	Flight Simulation Contest	Hangar
CIVIL AND ENVIRONMENTAL ENGINEERING		
9:00-10:30	Transportation Engineering Laboratory	13-113
9:00-10:30	Cal Poly Plan - Environmental Protection Engineering Lab	13-114
9:00-10:30	Concrete Laboratory	13-116
9:00-10:30	Strength of Materials Laboratory	13-117
9:00-10:30	Popsicle Stick Bridge Building Competition	13-117
9:00-10:30	Senior Project Design Laboratory	13-118
9:00-10:30	Structural Dynamics Laboratory	13-120
9:00-10:30	Hydraulics Laboratory	13-121
9:00-10:30	Geotechnical Laboratory	13-123
9:00-10:30	Water Quality Laboratory	13-201
COMPUTER ENGINEERING		
1:00-4:00	RoboRodentia 3 - "For the Love of Cheese"	20-1 Lobby
1:00-4:00	Laboratory Demonstration	Bldg. 20
COMPUTER SCIENCE		
10:00-2:00	Senior Project Display	Bldg 14
ELECTRICAL ENGINEERING		
10:00-4:00	EE Hospitality Room - Visit w/ faculty, staff, and students	20-105
10:00-4:00	Electronics Exploration - presented by IEEE and HKN	20-112
10:00-4:00	Open Labs	Bldg. 20
10:00-4:00	Information Table	Outside Bldg. 20-1
12:00-2:00	Radio Scavenger Hunt presented by IEEE & HKN	Outside Bldg. 20-1
10:00-4:00	Open Radio Shack - presented by Amateur Radio Club	20-123
INDUSTRIAL AND MANUFACTURING ENGINEERING		
10:00-3:00	Hourly Dept. Lab Tours	26-103
10:00-3:30	Adv. Electronic Manufacturing Engineering Cell	36-106
10:00-3:30	Electronic Manufacturing Engineering Lab	50-102
2:00	Dept. Chair, faculty, and students available to discuss the dept. and programs	26-103
10:00-4:00	Open for alumni, new students, parents, and friends	26-100
MATERIALS ENGINEERING		
11:00	Faculty available to meet with alumni	12-107H
MECHANICAL ENGINEERING		
9:00-4:30	Hospitality Room open for ME alumni and friends	13-109
11:00 & 1:00	Department Tours	13-109
4:30-6:30	Alumni Reception/Barbecue (RSVP required)	13-124 tent outside



College of Liberal Arts

Dept./Time	Event	Location
10-11:30	"Where Do We Go From Here?" Speakers Panel on Careers for Liberal Arts Majors	PAC classroom Bldg 6-124
9:00-4:00	CPTV – Cal Poly TV Programming Demonstration	26-300,303
9:00-4:00	KCPR Radio Station Tour and Exhibit	26-201
9:00-4:00	Mustang Daily Newspaper Tour and Exhibit	26-226
9:00-4:00	Alumni Art Exhibit	34-228
11:00-4:00	Annual Student Juried Exhibit	Univ. Art Gallery 34-171
12:00-4:00	Exhibit of Chrysalis Mixed Media	UU Galerie 65-221
12:30-1:30	Excerpts from Orchesis Dance Concert, "emotion in Dance"	60-06
2:00	Open House Music Dept. Student Recital	45-218
3:00	Cal Poly Chamber Orchestra Concert Tickets available at PAC Ticket Window	Cal Poly Theater 44-227
8:00	Open House Festival Concert #1 - Wind Orchestra and University Jazz Band Tickets available at PAC Ticket Window	PAC - Bldg 6
7:00-10:00pm	Annual Creative Writing Awards Ceremony (including readings by students)	Sandwich Plant - Bldg 19

"Full Service Student Housing"

- ♦ Cafeteria
- ♦ Private or Shared Rooms
- ♦ Academic Support/
Computer Lab
- ♦ Fitness Center
- ♦ Heated Pool
- ♦ Activities Program
- ♦ Housekeeping
- ♦ All Major Utilities
Paid

Stenner Glen

1050 Foothill Blvd., San Luis Obispo, CA 93405
(800) 734-1744 • (805) 544-4540
Web Site: <http://www.stennerglen.com>



Bank of America

Checking free of the monthly service charge
every summer through graduation*
24-hour customer service by phone
Free access to your cash at over
5,500 VERSATELLER® ATMs in the West

SAN LUIS OBISPO BRANCH
(805) 595-5300

College of Science and Mathematics

CAL POLY

<i>Dept/Time</i>	<i>Event</i>	<i>Location</i>
DEAN'S OFFICE		
10:00-4:00	College Hospitality Room	25-229
COLLEGE ADVISING CENTER		
9-12, 1:30-3	Walk In Advising	53-219
HEALTH PROFESSIONS		
10:00-2:00	Health Professions Peer Advising	53-219
BIOLOGICAL SCIENCES		
10:00-4:00	Department Hospitality Room	33-285
10:00-4:00	Department Tours (on the hour)	33-285
10:00-4:00	Tri-Beta, SMART, Wildlife Club	33-285, 287, 289
CHEMISTRY AND BIOCHEMISTRY		
10:00-4:00	Department Information and Hospitality Room	25-125D
10:00-3:30	Student Exhibits	52-B1
10:30-3:30	Chemistry Magic Show (every hour on half hour)	33-286
10:00-3:30	Glass Blowing Lab	52-B4
10:00-3:30	Polymers and Coating Lab	52-B7 & B8
1:00-4:00	Studio Classroom Lab	38-121
MATHEMATICS		
10:00-4:00	Department Hospitality Room	25-208
10:00-4:00	Exploring Algebra with Computers	38-131
10:00-4:00	Math Computer Lab open to visitors	38-135
10:00-4:00	Exploring Math / Videos	38-204
11-12, 1-2	MAPE* offered - no preregistration required	25-208
(*Mathematics Placement Examinations)		
PHYSICAL EDUCATION & KINESIOLOGY		
10:00-4:00	Tours of Labs and Facilities	43 / 1-150, 250
10:00-4:00	Obstacle Course for Children and Adults	Carnival Area
10:00-4:00	Motor Learning Stations	Carnival Area
10:00-4:00	Educational Contest (What PE means to me and my family)	Carnival Area
10:00-4:00	Blood Pressure Tests and Pamphlets	Carnival Area
PHYSICS		
10:00-2:00	Department Hospitality Room	52-D1
10:00-2:00	Student Advising / Questions & Answers	52-D1
10:00-2:00	Society of Physics Students - Demos and Mini Talks	52-E Wing
STATISTICS		
10:00-4:00	Department Hospitality Room	25-107F
10:00-4:00	Statistical Computing Displays	25-107B



Campus Resources

Offices Open For Visitation

<i>Time</i>	<i>Office</i>	<i>Location</i>
ADMISSIONS OFFICE		
10:00-2:00	Administration Building	Bldg 01-206
ASI CRAFT CENTER		
10:00-3:00	University Union	UU 111
ASI OUTINGS		
10:00-3:00	University Union	UU 112
ASSOCIATED STUDENTS INC.		
9:00-2:00	ASI Executive Offices	UU 217A
FINANCIAL AID		
10:00-2:00	Administration Building	Bldg 01-212
NEWMAN CATHOLIC CENTER		
11:00-4:00	Open for Visitation	Newman Center
UNIVERSITY CHRISTIAN CENTER		
10:00-3:00	Open for Visitation	U.C.C.

Tours

<i>Time</i>	<i>Tour</i>	<i>Location</i>
CAMPUS		
10:00-2:00	Hourly Campus Tours led by Poly Reps	UU Plaza
KENNEDY LIBRARY		
10, 11, 1, 2	Tours of Library	Library
RESIDENCE HALLS		
10:00-2:00	Residence Hall Tours for Freshmen (Tours A & B) (tours run continuously)	Santa Lucia Hall
10:00-2:00	Residence Hall Tours for Transfer Students (Tour C) (tours on the hour and half hour)	Santa Lucia Hall

Cal Poly Athletics

MEN'S TENNIS

1:00	vs. UC Santa Barbara	Cal Poly Tennis Courts
------	----------------------	------------------------

MEN'S BASEBALL

1:00	vs. University of the Pacific	Sinsheimer Park
------	-------------------------------	-----------------

WOMEN'S SOFTBALL

12:00/2:00	vs. University of the Pacific	Cal Poly Softball Field
------------	-------------------------------	-------------------------

Campus Resources

Resource Events

<i>Time</i>	<i>Event</i>	<i>Location</i>
PARENTS ASSOCIATION		
10:00-4:00	Hospitality Room	University Union San Luis Lounge
WEEK OF WELCOME		
10:30-11:30	Information Panel for New Students	University Union 220
PLAZA FAIR		
10:00-3:00	Plaza Fair Participants:	University Union Plaza
	Admissions	Health and Psychological Services
	Alumni Relations	Health Education
	Associated Students Inc.	Housing and Residential Life
	Athletics	Kennedy Library
	Campus Dining	Parents Association
	Campus Ministries	Student Academic Services
	Career Services	Student Life and Activities
	Disability Resource Center	Violence Intervention Prevention (VIP)
	El Corral Bookstore	Week of Welcome (WOW)
	Financial Aid	

KENNEDY LIBRARY

10:30, 11:30, 1:30	Preserving Your Family Photos and Documents	Library
10:30, 11:30, 1:30	World Wide Web Demonstration	Library
11 and 1	Stephen Marx presents Poly Royal Shakespeare Company Scenes from "Twelfth Night," "Romeo & Juliet," and "Hamlet"	Front of Library
all day	Multimedia Presentation	Library
12:00-2:00	Children's Storytelling	Library

Emergency Information

FIRE - POLICE - LOST CHILDREN - MEDICAL EMERGENCIES

all day	Public Safety Command Center On-Campus Phone 9911 Pay Phone 911	Bldg 74
---------	---	---------

HEALTH CENTER

9:00-1:00	Open for Medical Visitation	Bldg 27
-----------	-----------------------------	---------

FIRST AID BOOTHS

all day	Three locations for first aid on campus	Dexter Lawn Carnival Area University Union
---------	---	--

Information Booths

Open House Information Booths can be found at the following locations:

Front of Building 11
University Union Plaza
Dexter Lawn

make your

DREAMS A REALITY

Enjoy our total student community lifestyle
AT



ONE MUSTANG DRIVE
SAN LUIS OBISPO
TOURS DAILY 9am - 5pm

594-2500

[www/mustangvillage.com](http://www.mustangvillage.com)

E-Mail:

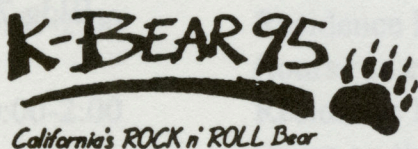
mustang@mustangvillage.com

Join us for our **OPEN HOUSE**

Friday, April 18, 1997

9am - 5pm

Featuring Live Remote Broadcast by



FM 95.3

12 Noon - 3pm

**DJ's
Ken & Matt**

**FREE
FOOD**

FUN

GAMES

MUSIC

PRIZES

**Stop By - Enjoy the Festivities - Reserve Your Place in
SLO's #1 Student Community**

*The 1997 Cal Poly Open House Committee
would like to thank the following:*

The 1996 Open House Committee

5 Cities Printing
Al Amaral
ASI Building Services
Ben Johnson
Betsy Bazzani
Bill Ashby
Bob Wilson
Cal Poly Admissions
Cal Poly Athletics
Cal Poly Parents Association
Cal Poly Student Affairs
Campus Catering
Carolyn Jones
Chris Lancellotti
Cindee Bennett-Thompson
Cindy Campbell
Darlene Slack
Debbie Arseneau
Deby Ryan
Donna Jordan
Eileen Amaral
Ellen Nottermann
Facility Services
Gabrielle Lea
Jaquie Paulsen
Jere Ramsey
Jim Gardiner

Joan Cirone
John Stipicevich
Dr. Juan Gonzalez
Judson Jones
June Serjeant
Ken Barclay
Kittie Shaughnessy
Linda Lee Thoresen
Meredith Kelly
Michael Barr
Nathan Paul
Dr. Paul Rainey
Dr. Paul Zingg
Peter Wilt
Plant Operations
Poly Reps
Rec Sports Staff
Rex Wolf
Rick Johnson
Ron Riguier
Shelly Aleshire
Student Life and Activities Staff
Susan Somppi
Susan White
Dr. Tere San Filippo
Theresa Kaiser
Tom Mitchell
Dr. Warren Baker
Week of Welcome

Special thanks to our sponsors:

Associated Students Inc.
Bank of America
Cal Poly Foundation
Campus Dining
Cellular One

Foothill Cyclery
Mailboxes etc.
MBNA
Mustang Village
Stenner Glen
Student Life & Activities

The 1997 Cal Poly Open House Committee:

Cindy Entzi
Andrene Kaiwi-Lenting
Phil Philbin
Ryan Averill

Nikki Biddison
Matt Ceppi
Jenny Justus
Kellie Korhonen
Rusty Lemon

Mike Arnold
Lisa Barnicoat
Sasha Boehling
Don Hong
Stacey Johnston
Julie Lucksinger
Becky Markman
Mike May
Laura Miller
Nicole Novak
Alex Olea
Laura Owen
Ashley McLaughlin
Kate Picton
Mike Puopolo
Kimberly Sally
Joel Shirbroun
Jennifer Smith
Ray Thro
Mike Weiner
Amber Welch

Chairperson
Advisor
Advisor
Director of Facilities & Operations
and Programs Coordinator
Director of Special Events and Main Stage
Director of Transportation & Safety
Director of Admitted Students
Director of Publicity & Public Relations
Director of Carnival Festivities

Admitted Student Events Coordinator
Hospitality Coordinator
Hospitality Coordinator
Carnival Attractions Coordinator
Media Relations Coordinator
Community/Business Relations Coordinator
Club Relations Coordinator
Facilities & Operations Coordinator
Carnival Concessions Coordinator
Club Relations Coordinator
Sponsorship Coordinator
Hospitality Coordinator
Media Relations Coordinator
Public Relations Special Projects Coordinator
Admitted Student Events Coordinator
College Programs Coordinator
Locations and Planning Coordinator
Public Relations Special Projects Coordinator
Database and Club Records Coordinator
Webmaster
Educational Contests Coordinator

