



Oceans of Opportunity

Cal Poly's 12th Annual
Open House
April 15-16, 2005

April

15

Admitted Students' Preview Day

Dive on In!

April

16

Open to the Public

Make a
Splash!





The University Police Department Welcomes You to Open House!

We want you to have a safe and pleasant visit.
If you need assistance, here are some options:

Emergency

Call 9-1-1 from any campus phone

This will immediately connect you to the University Police Department
Dispatch Center.

Note: Calling 9-1-1 on any cell phone will connect you to the California Highway Patrol. CHP will
immediately transfer you to the University Police Department.

Non-emergency

Call the University Police Department at (805) 756-2281.

WELCOME FROM THE CHAIRS

DEAR OPEN HOUSE GUESTS:

Hello and welcome to Cal Poly, San Luis Obispo's 12th Annual Open House! Whether you are visiting from across the country or right down the street, this is the perfect opportunity to experience the Cal Poly way of life. If you are new to this event or have visited us before, Open House 2005 has something new and exciting for you.

We are very excited about this year's theme, "Oceans of Opportunity" and have incorporated it throughout the weekend. You will recognize it in our publications, carnival, club booth decorations, and entries in the Poly Royal Parade.

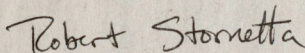
The Open House Committee is thrilled to introduce "Friday Nite Invite: The Ocean Commotion!" for admitted students and current Cal Poly freshman. The event, happening in the University Union and McPhee's Games Area, will include rock wall climbing, crafts, bowling, billiards, and pizza.

We want you to submerge yourself in all the opportunities available at Cal Poly. You may explore our outstanding academic programs, experience the diverse range of clubs, and enjoy our beautiful campus. Venture out into the greater San Luis Obispo community which Cal Poly students are proud to call home.

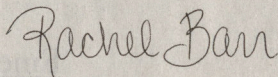
This campus-wide celebration is the outcome of hard work by a crew of 15 student volunteers in collaboration with many resources, on- and off-campus. This dedicated team--you'll recognize them by their sea mist green shirts and seashell lanyards--has worked diligently to make sure Open House is a great experience for participants and guests.

Thank you for coming. We hope you catch the Cal Poly wave!

"Sea" you next year.



Robert Stornetta
Open House 2005 Co-chair



Rachel Barr
Open House 2005 Co-chair

2005 OPEN HOUSE COMMITTEE

Co-chairs:

Rachel Barr
Robert Stornetta

Club Relations:

Chelsea Cavazos, Director
Ashley Evans
Tina Mai

Facilities and Operations:

Dharti Panchal, Director
Joun Kim

Public Relations:

Carl Payne, Director
Megan Alpers
Jennifer Kaefer
Jessica Greenwalt

Special Events:

Shannon Austin, Director
Allison O'Leary
Nicole Stivers

Transportation and Safety:

Leon Sheynkman, Director

Advisors:

Lisa Bruce
Andrene Kaiwi-Lenting

TABLE OF CONTENTS

Weekend Overview.....	4
Friday at a Glance.....	6
Saturday at a Glance.....	7
Sunday at a Glance.....	7
Alumni Events.....	8
Friday Student Resources.....	10
College Events	
College of Agriculture.....	12
College of Architecture and Environmental Design.....	14
College of Engineering.....	16
College of Liberal Arts.....	18
College of Science and Mathematics.....	20
Orfalea College of Business.....	21
Special Events.....	22
Saturday Student Resources.....	25
College Events	
College of Agriculture.....	26
College of Architecture and Environmental Design.....	28
College of Engineering.....	29
College of Liberal Arts.....	30
College of Science and Mathematics.....	31
Orfalea College of Business.....	32
Special Events.....	34
Sunday Special Events.....	36
Participating Clubs.....	38
Guide to Cal Poly Colleges/Majors.....	41
Special Thanks.....	43

WEEKEND OVERVIEW

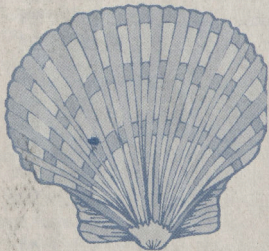
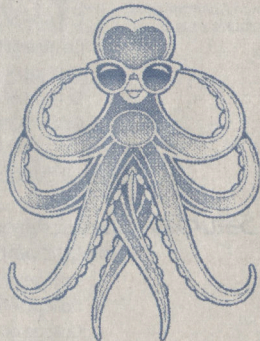


Friday, April 15

Friday, Admitted Students' Preview Day, focuses on conditionally admitted students and their families. You will be introduced to Cal Poly's nationally-recognized academic programs, as well as our friendly faculty and staff. You can take full advantage of the opportunity to meet college deans, tour the campus and departments, and get acquainted with the many resources available to Cal Poly students. Don't forget to attend "Friday Nite Invite: The Ocean Commotion!" where you'll meet current and future students and get a chance to explore what the University Union has to offer while bowling, listening to live music, playing games, and rock wall climbing.

Saturday, April 16

Saturday is a showcase of all that Cal Poly has to offer and is open to the public. Many departments will have tours, displays, and exhibits. In addition, over 200 student clubs and organizations offer educational, informational and concession booths for you to visit. While exploring the campus, stop by Dexter Lawn to see a full program of student talent on the Open House Main Stage. The Carnival, located in the University Union Plaza, is great for kids of all ages featuring activities like a bounce house, fish toss, face-painting, and much more! So come feast on everything from tri-tip to cotton candy and experience the excitement of other special events such as the Truck and Tractor Pull, Rodeo, and the Music Department's Open House Concert while enjoying all that Cal Poly has to offer.



Sunday, April 17

The fun isn't over! Sunday is the perfect day to continue to acquaint yourself with Cal Poly. As the weekend winds down, you can take a last chance to stop by Kennedy Library or shop at El Corral Bookstore. Sunday afternoon is the All-state Wind Orchestra and Jazz Band Festival Concert featuring some of our state's finest young musicians. Also, catch the Cal Poly Mustangs softball team playing Pacific and baseball team playing UC Davis.

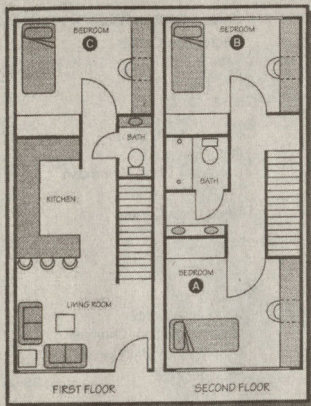


Valencia

Townhouse Apartment Living for Students

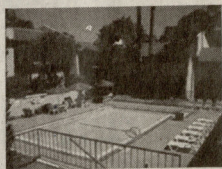
Great Amenities...

- Your Own Bedroom in 3-Bedroom Units
- Each Bedroom is Individually Leased
- Fitness Center and Heated Pool
- Computer Lab with FREE Internet Access
- Recreation Center/Billiards/Ping Pong
- TV Lounge with 72" Big Screen and VCR
- Walk to Shopping Center and Restaurants
- On SLO City Bus Route
- Convenient Leasing Options
- Reduced Noise Hours After 10PM
- GPA Discount of 5%-10% for Superior Grades
- Full-time Maintenance Department
- 24 Hour Staffing for After-Hours Assistance
- **NEW!** Credit Card Payments Now Accepted



FLOOR PLAN

**Virtual Tour and
Online Application**
valenciaapartments.com



*On-site Tours Weekdays 9am-5pm & Saturdays 10am -2pm
Poly Open House Weekend: Saturday & Sunday 10am-4pm*

555 Ramona Drive, San Luis Obispo CA 93405

tel 805-543-1450 fax 805-543-1477 www.valenciaapartments.com



FRIDAY AT A GLANCE

Admitted Students' Preview Day

7:30 am-Noon	Admitted Students' Check-In College of Agriculture College of Architecture and Environmental Design College of Engineering	Mott Lawn
9:30 am-Noon	Admitted Students' Check-In College of Liberal Arts College of Science and Mathematics Orfalea College of Business	Mott Lawn
8 am-3 am	Resource Faire	University Union Plaza
8:30-9 am	University Welcome I College of Agriculture College of Architecture and Environmental Design College of Engineering	Recreation Center
9:30 am	College Welcomes College of Agriculture--Student Welcome Parent Welcome	Bldg. 9, Farm Shop Mott Gym
9:30 am	College of Architecture and Environmental Design	University Union, Chumash
9:30 am	College of Engineering	Recreation Center
11-11:30 am	University Welcome II Orfalea College of Business College of Liberal Arts College of Science and Mathematics	Recreation Center
Noon	College Welcomes Orfalea College of Business	Recreation Center
12:15 pm	College of Science and Mathematics	University Union, Chumash
1:00 pm	College of Liberal Arts	Christopher Cohan Center
9 am-4:30 pm	College and Departmental Activities	Campus-wide
2:30 pm	<i>Please Refer to Individual College Schedule Pages for Details</i> Cal Poly Rodeo	Rodeo Arena
8-11 pm	"Friday Nite Invite: The Ocean Commotion!"	University Union, McPhee's
8-10 pm	Parents' Coffee House Hosted by Cal Poly Week of Welcome	University Union, Chumash

Friday Nite Invite: The Ocean Commotion!

Friday, April 15, 2005
8:00 pm-11:00 pm
University Union

Parents'



While the kids are at play...
mingle with other parents
and ask questions of
current Cal Poly
students!

House Friday, 8-11pm
University Union, Chumash



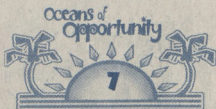
SATURDAY AT A GLANCE

Open to the Public

8 am-4 pm	Open House Information Booth Meet Open House Committee members, buy an event t-shirt, obtain event information.	Dexter Lawn
9 am	Poly Royal Parade	University Union @ Grand Ave.
10 am	Opening Ceremonies	Main Stage, Dexter Lawn
10:30 am-3:30 pm	Main Stage Performances	Main Stage, Dexter Lawn
10:30 am-4 pm	Open House Carnival Club Information and Concession Booths, Exhibits, & Demonstrations	University Union Plaza Campuswide
1 pm	Truck and Tractor Pull	Field C-36 (across from Crops Unit)
3:30-4 pm	Closing Ceremony and Awards	Main Stage, Dexter Lawn
5 pm	Cal Poly Rodeo	Rodeo Arena
8 pm	Music Department's Open House Concert	Christopher Cohan Center

SUNDAY AT A GLANCE

10 am	Women's Lacrosse	Sports Complex
10-11 am	Design Village Awards Ceremony	Poly Canyon
Noon	Softball vs. Pacific	Bob Janssen Field
2:30 pm	Music Department's All-state Festival Concert	Christopher Cohan Center
6 pm	Baseball vs. UC Davis	Baggett Stadium



ALUMNI EVENTS

FRIDAY, APRIL 15

Chemistry & Biochemistry

Video presentation.

Noon-4 pm

Bldg. 25, Rm. 125

SATURDAY, APRIL 16

Materials Engineering Alumni Continental Breakfast

9-11 am

Bldg. 12, Rm. 107H

Alumni, spouses, and friends are invited to meet, mingle, and visit with faculty while enjoying a continental breakfast hosted by the Materials Engineering Department in their Building 12 office.

Alumni Association Welcome Back Booth

10 am-4 pm

Dexter Lawn

Browse through old yearbooks, mingle with other alumni and grab your "I [] Cal Poly" sticker at the Cal Poly Alumni

Association Welcome Back Booth. Members--present your card and receive a free gift!

CAED Open House & Alumni Welcome

10 am-4 pm

Bldg. 5, Rm. 212, Lobby

Chemistry & Biochemistry

10 am-4 pm

Bldg. 25, Rm. 125

Video presentation.

Aerospace Engineering Hospitality Room

10:30 am-3 pm

Bldg. 7, ATL

The Aerospace Engineering Department invites all of its alumni to drop by our Flight Simulation Lab for coffee and light refreshments.

Civil and Environmental Engineering Hospitality Room

10:30 am-12:30 pm

Bldg. 13, Rm. 118

The Civil and Environmental Engineering Department invites alumni to drop by the Hospitality Room to enjoy a continental breakfast. Faculty will be available to answer questions.

Computer Engineering Hospitality Room

10:30 am-4 pm

Bldg. 20, Rm. 118

CPE faculty and students will be available to discuss the Computer Engineering Program. Refreshments will be served.

Electrical Engineering Hospitality Room

10:30 am-4 pm

Bldg. 20, Rm. 111

Alumni, prospective students, parents, and campus visitors are invited to come by and enjoy free refreshments. Faculty and students will be on hand to answer your questions.

College of Engineering Centennial

11 am-12:30 pm

University Union, Chumash

Alumni, faculty, and friends of the college celebrate the achievements of our distinguished alumni. With welcoming remarks by the dean, awards presentations, and a delicious lunch buffet, everyone will enjoy renewing old acquaintances and making new ones in a festive atmosphere.

Computer Science & Software Engineering

11 am-3 pm

Bldg. 14, Rm. 232

Hospitality Room

Computer Science and Software Engineering alumni and their families are invited to stop by and visit with faculty and see our newly-renovated labs. Light refreshments will be served.

Industrial & Manufacturing Engineering Hospitality Room

11 am-4 pm

Bldg. 26, Rm. 103

Alumni, parents, current and prospective students--come by and enjoy free refreshments. Faculty and students will be available to answer questions.

ArcE Annual Alumni Luncheon--by reservation only

11:30 am-1:30 pm

Bldg. 21, Courtyard

POLY REPS 20-year Reunion Reception

1-4 pm

Bldg. 28, Alumni House

Reservation required. For more information and to RSVP, call the Cal Poly Alumni Association at 805.756.2586.

Society of Women Engineers Game and Dessert Party

1:30-3 pm

Bldg. 13, Rm. 118

Join fellow Society of Women Engineers alumni for dessert and fun! We will be playing several games. This is a great way to reconnect with your SWE friends.

City and Regional Planning Alumni Reception

2-3 pm

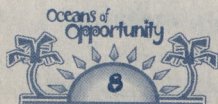
Bldg. 34, Hallway near Rm. 251

Come join faculty and fellow alumni for refreshments and conversation--check out the current student projects.

Friends of WOW (WOW alumni) General Meeting

3 pm

TBA--Check the WOW booth for information.



ALUMNI EVENTS

Men's Water Polo

An alumni water polo match where former Cal Poly polo players from Nor-Cal compete against those from So-Cal. Everyone is welcome and encouraged to come and watch at the Recreation Center pool on the Cal Poly campus.

Women's Water Polo

Support the two-time national champions in an alumni game. Everyone is welcome and encouraged to come.

POLY REPS 20-year Reunion Dinner

Reservation required. For more information and to RSVP, call the Cal Poly Alumni Association at 805.756.2586.

TBA

Recreation Center Pool

TBA

Recreation Center Pool

6 pm

Madonna Inn

h a P P Y 2 0th a n n i v e r s a r y POLY REPS

POLY REPS, Cal Poly's student alumni council, consists of 30 of Cal Poly's best and brightest. POLY REPS give campus tours, including those during Open House, participate in University outreach and much more. Please join Cal Poly in congratulating POLY REPS for its 20 years of success and wishing them the best for all the years to come!

Rediscover an ocean of opportunities with the CAL POLY ALUMNI ASSOCIATION

Stay Connected to Cal Poly Networking Opportunities

Invitations to Special Events

Free E-Mail Forwarding

Mustard Merchant Discounts

Swim over to the CPAA Welcome Back Booth on
Dexter Lawn during Open House!

Members, while in town this weekend, show your card at these local

"Mustard Merchants" and receive a special CPAA discount:

Atmospheres - Beverly's Fabrics - Boo Boo Records - The Boxworks - Brewed Behavior - Bruce Owens Painting - Cal Poly Downtown - Century 21 Realty, SLO - Copeland's Sports - Crushed Grape - El Corral Bookstore - The Gold Concept - Jim's Campus Camera - The Kitchen Shop - Mountain Air Sports - The Sanctuary Tobacco Shop - Sands Liquor & Deli - Cold Stone Creamery - Hobee's Restaurant - Woodstock's Pizza - Plus many area hotels!

For a complete list of benefits and more information about the CPAA, please visit our Web site:

www.alumni.calpoly.edu

GARDEN STREET INN

An 1887 Italianate-Victorian jewel
in the heart of San Luis Obispo,
steps from restaurants/entertainment.

9 Guest rooms, 4 Suites,
many w/fireplace or Jacuzzi tub.

A full gourmet breakfast and
an evening reception of wine &
hors d'oeuvres are included.

www.gardenstreetinn.com

805 / 545 - 9802

Bed & Breakfast



1212 Garden Street
San Luis Obispo



FRIDAY'S STUDENT RESOURCES

RESOURCE FAIRE 8 AM-3 PM UNIVERSITY UNION PLAZA

Associated Students, Inc.
Campus Dining
Career Services
Commuter and Access Services
El Corral Bookstore
Financial Aid

Health and Counseling Services
Health Education Department
Housing and Residential Life
Interfaith Campus Council
Intercollegiate Athletics
International Education and Programs
Parent Program

PREFACE: The Cal Poly Shared
Reading Program
Student Academic Services
Student Life & Leadership
University Police Department
Week of Welcome

CAMPUS TOURS

POLY REPS will be offering campus tours on both days of Open House. All tours are walking tours of the campus that provide an overview of the University and its facilities. Friday, April 15—tours will leave on the hour, every hour, from the University Union Plaza stage between 9 am and 2 pm (last tour leaving at 2 pm). Tours will also run on Saturday—see page 25 for details.

PRESENTATION AND SESSION INFORMATION

Housing and Residential Life Parent Info Sessions

Noon & 2 pm

Sierra Madre Residence Hall (Bldg. 113)

Housing and Residential Life Student Info Sessions

Noon & 2 pm

Yosemite Residence Hall (Bldg. 114)

Parents' Panel (Sponsored by WOW and Parent Program) 2-3:30 pm

University Union, Rm. 220

The parent panel is an open forum for parents of prospective students to ask questions of current students and parents of current students. Topics will include benefits of a Cal Poly education, the prestige of the school, and any other questions pertaining to Cal Poly.

Web Resources for Parents

1:30-2:30 pm

University Union, Bishop's Lounge

The Parent Program provides tips and helpful links to finding information and resources for parents on the Cal Poly Web site.

STUDENT ACADEMIC SERVICES

Through Student Academic Services (SAS), students can connect with a network of academic services, advisors, and activities designed to help students excel at Cal Poly and enhance students' learning skills. SAS provides academic and personal advising as well as academic enhancement services. SAS also offers support to students from low-income backgrounds who are first-generation college students and/or disabled. The key goal of SAS is to ensure that all students at Cal Poly have equal opportunity to achieve academic success and graduation.

Student Academic Services:

Academic Skills Center

Educational Talent Search

Supplemental Workshops in Mathematics

Connections for Academic Success

Student Support Services

Supplemental Workshops in Science

Educational Opportunity Program

Summer Institute

Upward Bound

Academic advisors will be available on a drop-in basis to answer questions and provide information about department services:

Academic Skills Center

9 am-3 pm

Bldg. 33, Rm. 290

Connections for Academic Success

9 am-3 pm

Bldg. 65, Rm. 217A

Educational Opportunity Program

9 am-3 pm

Bldg. 81, Hillcrest

Student Support Services

9 am-3 pm

Bldg. 124, Rm. 119

HELP US IMPROVE...WE NEED YOUR INPUT!

Your Opinion Matters

Thank you for coming! Our goal is to provide our visitors with a fun and productive event which enables them to discover the myriad of opportunities and resources at Cal Poly.

Tell Us What You Think

Within a week, you will receive an e-mail with a link to our survey.

Please take a few minutes to tell us about your experience at Open House.



FRIDAY'S STUDENT RESOURCES

Admissions Office	8 am-5 pm	Bldg. 1, Rm. 206
ASI Recreational Sports	10:30 am-3 pm	Recreation Center
Recreation Center guided tours available every half hour. Information booth also open from 8:30 am-2 pm.		
Career Services	8 am-4 pm	Bldg. 124, Rm. 114
Career Services staff will be available at the Resource Fair to answer your career/job-related questions.		
Campus Dining	Various times	Campus-wide
Food is fuel for the mind. Restaurants on campus nourish and stimulate the intellect of Cal Poly's 2,800 resident students plus provide food for thousands of other students, faculty, and staff.		
Disability Resource Center (DRC)	9 am-4 pm	Bldg. 124, Rm. 119
DRC advisors will be available to answer questions from prospective students and their families and provide information about departmental services.		
El Corral Bookstore	7:45 am-5 pm	University Union
Shop at our main store, located in the University Union, for all required and recommended courseware as well as a fully stocked student and office supply section, Tech Center with the latest computer hardware, software and peripherals, Cal Poly insignia clothing and gift section, general reference and reading books, magazines, seasonal gifts and greeting cards, health and beauty aids, and snack foods. We also provide online information and shopping, including discounted textbooks, by using textbook reservations on our Web site: www.elcorralbookstore.com .		
Financial Aid	8 am-4 pm	Bldg. 1, Rm. 212
The Financial Aid office will be open for questions from prospective students and their families. Because of federal privacy laws, the student must be present when discussing his/her specific information.		
Health and Counseling Services	9 am-4 pm	Bldg. 27
Health Center staff will be available to answer your health care and other health-related questions. Tours of the Health Center are self-guided.		
Housing and Residential Life	10 am-4 pm	All Residence Halls
Tours of the residence halls are self-guided. Flyers and maps are available at the Resource Fair and the "Housing Info Center" located between Santa Lucia (Bldg. 106) and Sequoia Halls (Bldg. 108), across from the Administration Building. The Housing Office will be closed Friday and Saturday and all housing staff will be located at the Housing Info Center.		
Parent Program Welcome Booth	8 am-3 pm	University Union Plaza
Cal Poly's Parent Program staff and parents of current students are available to answer questions and provide parent-to-parent perspectives about ways to support your student's success. Stop by to sign up for helpful tips and news from Cal Poly and to learn more about our events and services.		
PREFACE:		
The Cal Poly Shared Reading Program	8 am-3 pm	University Union Plaza
It's what college is all about--sharing perspectives, discussing ideas. Read a provocative book over the summer and discuss it with classmates, faculty, staff, and community members during WOW. PREFACE will be your first opportunity to discuss ideas at the university level. And the best part is your first trial run has no grades attached! Reading, learning, college. . . PREFACE. The book title for 2005 is <i>The Kite Runner</i> by Khaled Hosseini, a novel now on the top of numerous bestseller lists!		
Robert E. Kennedy Library	7 am-5 pm	Bldg. 35
Student Life & Leadership		
The Community CENTER	10 am-3 pm	University Union, Rm. 217
Multicultural Center	10 am-3 pm	University Union, Rm. 217
Pride Alliance	10 am-2 pm	Bldg. 52T (portable near Bldg. 25)
Women's Center	10 am-3 pm	University Union, Rm. 217
University Police Department	7 am-5 pm	Bldg. 74



FRIDAY'S COLLEGE EVENTS

College of Agriculture

ALL DEPARTMENTS

Information Booth	All Day	Via Carta & Perimeter
Admitted Students' Check-In	7:30 am-Noon	Mott Lawn
University Welcome	8:30-9 am	Recreation Center
Student Welcome	9:30 am	Bldg. 9, Farm Shop
Parent Welcome	9:30 am	Mott Gym
Admitted Ag Student and Parent BBQ	11:30 am-1 pm	Bldg. 9, Farm Shop

AGRICULTURAL BUSINESS

Presentation on the Agricultural Business Major	1 pm	Spanos Theatre
Reception: Meet Faculty, Students, and Tour the Department	2:30-3:30 pm	Bldg. 10, Rm. 206

AGRICULTURAL EDUCATION AND COMMUNICATION

Presentation on the Agricultural Science Major	1 pm	Bldg. 10, Rm. 100
--	------	-------------------

ANIMAL SCIENCE

Presentation on the Animal Science Major	1 pm	Bldg. 16
Equine Center Tour	2:30 pm	Bldg. 32, Horse Unit
Poultry Center Tour	2:30 pm	Bldg. 150, Poultry Unit

BIORESOURCE AND AGRICULTURAL ENGINEERING

Presentations on BioResource and Agricultural Engineering and Agricultural Systems Management Majors	1 pm	Bldg. 8, Rm. 122
--	------	------------------

DAIRY SCIENCE

Presentation on Dairy Science Major	1 pm	Bldg. 18, Rm. 2
Dairy Cattle Instructional Center Tour	2:30 pm, 3 pm	Bldg. 18, Rm. 1

EARTH AND SOIL SCIENCES

Presentation on Earth and Soil Sciences Majors	1 pm	Bldg. 52, Rm. A07
--	------	-------------------

FOOD SCIENCE AND NUTRITION

Presentation on Food Science and Nutrition Majors	2 pm	University Union, Chumash
---	------	---------------------------

HORTICULTURE AND CROP SCIENCE

Presentation on Environmental Horticultural Science, Crop Science, Fruit Science, and Plant Protection Science Majors	1 pm	Bldg. 11, Rm. 112
---	------	-------------------

MILITARY SCIENCE

Information Booth on Scholarship and Career Opportunities	1-5 pm	Dexter Lawn
---	--------	-------------

NATURAL RESOURCES MANAGEMENT

Presentation on Forestry and Natural Resources and Environmental Management and Protection Majors	1 pm	Bldg. 10, Rm. 223
Department Social	3:30 pm	Vista Grande

RECREATION, PARKS, AND TOURISM ADMINISTRATION

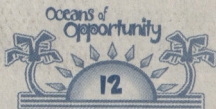
Presentation on Recreation, Parks and Tourism Administration Major	1 pm	Bldg. 8, Rm. 123
Department Social	3:30 pm	Vista Grande

WINE AND VITICULTURE

Presentation on Wine and Viticulture Major	1 pm	Bldg. 11, Rm. 210
--	------	-------------------

CAL POLY RODEO

Rodeo	2:30 pm	Rodeo Arena
Tickets—\$8, general; \$5, students and seniors, children under 6, free. Purchase tickets at rodeo grounds, day of event.		
Barbeque at the Madonna Inn	5:30 pm	Madonna Inn Expo Hall



Learning how to pay for college should only involve one four-letter word.

FREE.

The financial aid process can be both frustrating and confusing. That's why Chela Education Financing™ brings you **A Parent's Guide to Paying for College 2005-2006**, a CD-ROM developed with the help of Financial Aid Directors at leading universities. Best of all, it's completely **FREE**. This CD will give you the confidence you need and help you :

- Navigate the financial aid process
- Conquer the FAFSA (Free Application for Federal Student Aid)
- Decode and compare award letters from various colleges
- Fill the financial aid gap and keep debt to a minimum

To get your **FREE CD-ROM**, A Parent's Guide to Paying for College 2005-2006, call

866.77.CHELA (24352)

or visit us online at chelastudentloans.org/cd



We're in it for the students.™

FRIDAY'S COLLEGE EVENTS

College of Architecture and Environmental Design

ALL DEPARTMENTS

Admitted Students' Check-In	7:30 am-Noon	Mott Lawn
University Welcome	8:30-9 am	Recreation Center
CAED New Student Welcome Meeting	9:30-10:30 am	University Union, Chumash
Design Village Competition	9 am-5 pm	Poly Canyon

This year's theme is: REFUGE: the challenge of dwelling after disaster. In its 32nd year, Design Village is a student design-build competition sponsored by the College of Architecture and Environmental Design (CAED) and student-run Design Village Club. Competing teams, in this intensive three-day event, carry materials for their self-designed shelters up scenic Poly Canyon, erect them, and live in them for three days/two nights. Visitors are invited; free admission for viewing courtesy of the Design Village Club and CAED on Friday from 2 pm-4 pm and Saturday from 10 am-4 pm via a shuttle from the base of Poly Canyon Road. <http://designvillage.calpoly.edu>

Free Shuttle Service to Design Village	2-4 pm	Poly Canyon Gate
Robert Hifumi Odo Memorial Scholarship Display	Noon-5 pm	Bldg. 5, Rm. 212-Lobby
CAED Student Work Exhibit	Noon-5 pm	CAED Gallery, Bldg. 5, Rm. 105
College Tours by the CAED Ambassadors	1:00 pm-4 pm	Bldg. 5, Lower Stair Court

ARCHITECTURAL ENGINEERING

Meeting with New Students	1-2 pm	Bldg. 21, Rm. 122A
Transfer Student Portfolio Review and Advising	2-3 pm	Bldg. 21, Rm. 110A
Transfer Student Advising	3-4 pm	Bldg. 21, Rm. 110A

ARCHITECTURE

Meeting with New Students	12:15-1 pm	Bldg. 5, Stair Court
Transfer Student Portfolio Review & Advising (Arch/ArchE courses)	1-3 pm	Bldg. 5, Rm. 203, 204
Collaborative Interactive Design Studio/Open Classroom	2-4 pm	Bldg. 5, Rm. 207, 224*
*Demonstrations available on the half hour in Room 224.		
Cal Poly Downtown Studio	2-5 pm	Pacific Coast Center
Off-campus, community-based, service-learning studio for affordable housing.		75 Higuera at Madonna Rd. Suite 170

OPEN HOUSE COMMITTEE

Interested in the ultimate "learn-by-doing" experience? Join other Cal Poly students as they plan this premiere showcase event! The Open House Committee is a great opportunity to gain leadership experience while meeting others and having fun. If you are interested in joining the committee, please visit our Website at <http://orientation.calpoly.edu/openhouse> or e-mail open-house@calpoly.edu for more details.



College of Architecture and Environmental Design

CITY AND REGIONAL PLANNING

Meeting with New Students

12:30-1 pm

Bldg. 34, Rm. 249

Presentation of Selected Award-winning

Student Projects

1-1:30 pm

Bldg. 34, Rm. 249

Transfer Student Portfolio Review and Advising

1:30-2 pm

Bldg. 34, Rm. 249

CONSTRUCTION MANAGEMENT

Meeting with New Students and Transfer

1-1:30 pm

Bldg. 34, Rm. 249

Student Advising

LANDSCAPE ARCHITECTURE

Meeting with New Students

12:30-1 pm

Bldg. 34, Rm. 213, Upper Lobby

Tour of Studios

1-1:30 pm

Bldg. 34, Rm. 213, Upper Lobby

Transfer Student Advising

1:30-3 pm

Bldg. 34, Rm. 210

MEET OUR POLYROYAL PARADE GRAND MARSHAL

Open House is based in tradition and celebrates all that is great about Cal Poly. The Open House Committee is proud to announce the selection of **Andrea Kerns** as the Poly Royal Parade's Grand Marshal for 2005.

Kerns was chosen based on her years of dedication to the Student Life & Leadership department. She has worked for Cal Poly 27 years as an administrative support coordinator and Open House 2005 will be her final event before retiring. "My first day at Cal Poly was March 8. Since Poly Royal in April was my first major activity, I thought it appropriate that the same event, Poly Royal Open House, be my last!"

"She supports anything that has to do with student-run activities," said Andrene Kaiwi-Lenting, assistant director for Student Life & Leadership. "Andrea has a good time helping people, not because it's her job, but because she truly enjoys it. Naming her the Grand Marshal was the least we could do...to appreciate a person who supports the goals of Open House."

Over the years, Kerns has worked behind the scenes, from facility coordination to finances, for Open House and other campus activities. Kerns also provided clerical support for the Program Board, helping schedule activities for national speakers, concerts, fine arts events, films, crafts, and outings. For many years, all non-classroom use of facilities was scheduled through her department. In one year, the office filed 10,000 requests by hand. "When I came to Student Life & Leadership in 1978, work was typed and copies were made by using carbon paper and by walking next door to the Administration Building. Correcting mistakes was an ordeal requiring patience," Kerns said.

When Kerns found out she was to be honored as the Grand Marshal, she said she was overwhelmed and shocked. She added that she is looking forward to the event and considers Open House a highlight of the academic year and "an upbeat time to leave." "The students on the Open House Committee and the other students in our department's programs are wonderful to work with and it will be hard to leave them. I will miss every minute of the action, rapid changes, and upbeat atmosphere...but now I will have more time for the action of our many grandchildren."

On behalf of the Open House 2005 Committee and the entire Student Life & Leadership department, **THANK YOU, ANDREA KERNS**, for your years of dedicated support and tireless effort. We are great because of you! Enjoy retirement—we will truly miss you.

The parade will be held Saturday, April 16 beginning at 9 am at the campus corner of Grand Avenue and Perimeter Road and ends where Perimeter Road meets Via Carta.



FRIDAY'S COLLEGE EVENTS

College of Engineering

ALL DEPARTMENTS

Admitted Students' Check-In	7:30 am-Noon	Mott Lawn
University Welcome	8:30-9:15 am	Recreation Center
College Welcome	9:30-10:30 am	Recreation Center

AEROSPACE ENGINEERING

Welcome Lunch	11 am-12:30 pm	Bldg. 58, Welding
Lab Tours	12:25-3:30 pm	Bldg. 58, Welding
Guided tours of AERO labs will depart from Bldg. 58 (Welding Building) after lunch beginning at 12:25 pm. Tours will include visits to the Structures Lab, Propulsion Lab, Aircraft Design Lab, Spacecraft Design Lab, and Flight Simulator Lab.		
Q & A Session with Dr. Jordi Puig-Suari	3:30-4 pm	Bldg. 58 (behind the building)

CIVIL AND ENVIRONMENTAL ENGINEERING

Welcome Luncheon and Information Session	Noon-1 pm	Mott Gym
Lunch provided by Campus Catering. During information session the department chair and faculty are introduced and short speeches are given by several university and college representatives describing Cal Poly advantages and various services available to students.		
Tours of Civil and Environmental Engineering Labs	1:15-3 pm	Bldg. 13

COMPUTER ENGINEERING

Welcome, Lunch, Senior Project Fair	11 am-1 pm	Christopher Cohan Center, Pavilion
After a brief welcome by Dr. Myers, CPE Program Director, participants are welcome to browse various displays, including several computer engineering senior projects. Light buffet lunch will be served.		
Lab Tours and Demos	1-3 pm	Bldg. 20, Forbes Center Patio
CPE faculty and students will give guided tours of labs and demonstrations. The following times are suggested for optimum availability of tours. Please participate in the tour that corresponds to the first letter of your last name: A-D, 1:15 pm; E-H, 1:30 pm; I-L, 1:45 pm; M-P, 2:00 pm; Q-S, 2:15 pm; T-Z, 2:30 pm; final tour (for those who missed their assigned tour), 2:45 pm.		

COMPUTER SCIENCE - SOFTWARE ENGINEERING

Information Session and Lunch	11 am	Bldg. 12, Vista Grande Cafe
During the information session, the department chair, faculty, and students will give an overview of the program. There will be plenty of opportunity to ask questions about all aspects of the program including curriculum, faculty, projects, and student activities. Light lunch will be served.		
Department Tours & Project Faire	1-3 pm	Bldg. 14
Selected labs will be open for viewing with current students and faculty on hand to answer questions. CSC and SE students will display projects and answer questions in Rm. 232.		

ELECTRICAL ENGINEERING

Welcome from Mike Cirovic, Department Chair	11 am-Noon	Christopher Cohan Center
During this information session, the department chair, faculty and students will give an overview of the program. There will be an opportunity for questions regarding curriculum, projects and student activities, including clubs.		
Lunch	Noon-1 pm	Bldg. 20, East Lawn
Department Tours	1:30-3 pm	Bldg. 20

GENERAL ENGINEERING

Welcome Luncheon and Introductions; Q & A Session	11 am-1 pm	Bldg. 7, Keck Lab
---	------------	-------------------



College of Engineering

INDUSTRIAL AND MANUFACTURING ENGINEERING

Welcome and Introductions 11 am
 Demonstration of equipment and interactive activities 11:15 am
 for students and parents; meet current students and faculty.
 Lunch Noon
 Tours of Lab Facilities; Demonstrations 1 pm
 Q & A session with Current Students & Faculty. 2:30 pm

Bldg. 26, Rm. 103
 Bldg. 26, Rm. 103

Bldg. 26, Lawn Area
 Start in Bldg. 26
 Bldg. 26, Rm. 103

MATERIALS ENGINEERING

Welcome and Introductions 11 am-Noon
 Lunch with Students and Faculty Noon-1 pm
 Panel Discussions for Parents and New Students 1-3 pm

University Union, Rm. 220
 Bldg. 12, Lawn
 Bldg. 33, Rm. 287, 289

MECHANICAL ENGINEERING

Lunch and Student Projects Showcase 11 am-2 pm
 Mechatronics Competition

Bldg. 3, Rm. 213 (Business Silo)

Newly accepted mechanical engineering students and their families are invited to join us for a display of ME Department projects and activities. Current students will compete in a lively mechatronics competition!

WOMENS ENGINEERING

Panel Discussion 4-6 pm
 "Past, Present & Future of Women in Engineering." After a welcome by Dean Lee and an introduction to the Women's Engineering Program and the Society of Women Engineers, female students and distinguished alumnae will conduct a panel discussion. Following the presentation, the students, faculty, and alumnae will be available for one-on-one discussions at an hors d'oeuvres reception.

Bldg. 7, Keck Lab

Open House Concert Festival Concert

SATURDAY, 4/16 • 8 p.m., Performing Arts Center
Musical Magic of Walt Disney's FANTASIA
Performances by CAL POLY'S SYMPHONY,
WIND ENSEMBLE & UNIVERSITY JAZZ BAND

Bach's "Toccata and Fugue
 in D Minor," Moussorgsky's
 "Night on Bald Mountain"
 and Ponchielli's
 "Dance of the Hours."
 Don't miss this
 one-of-a-kind event!

\$9-\$18

SUNDAY, 4/17 • 2:30 p.m., Performing Arts Center
All-State Wind Orchestra and Jazz Band
120 of the state's finest young musicians
have been selected to perform

JUAN RINGER from
 Argentina will conduct
 the Festival Wind
 Orchestra, and pianist
 MARK LEVINE will be
 the Festival Jazz
 Band's guest soloist.

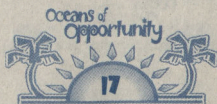
\$7-\$16

Tickets available at the
 Performing Arts Ticket Office:
 805-756-2787



<http://music.calpoly.edu>

Sponsored by the Cal Poly Music Department, College of Liberal Arts, & Instructionally Related Activities program



FRIDAY'S COLLEGE EVENTS

College of Liberal Arts

ALL DEPARTMENTS

Admitted Students' Check-In	7:30 am-Noon	Mott Lawn
Visit CLA Classes	8 am-1 pm	See List, Next Page
University Welcome	11-11:30 am	Recreation Center

ART AND DESIGN DEPARTMENT

Student Exhibits	9 am-1 pm	Bldg. 34, Gallery
------------------	-----------	-------------------

GRAPHIC COMMUNICATION

Labs Open for Visit	9 am-1 pm	Bldg. 26, Rm. 209
---------------------	-----------	-------------------

JOURNALISM DEPARTMENT

Tours and Exhibits	9 am-1 pm	Bldg. 26, Second Floor
Cal Poly TV (CPTV) Demo, <i>Mustang Daily</i> , KCPR Radio		

MODERN LANGUAGES AND LITERATURE

Polylingual International Resource Center	9 am-1 pm	Bldg. 12, Rm. 105A
CLA Multimedia Lab	9 am-1 pm	Bldg. 12, Rm. 105B
COLLEGE OF LIBERAL ARTS WELCOME	1-2:30 pm	Christopher Cohan Center

All majors meet with Dean Linda Halisky, Associate Dean, Debra Valencia-Laver, faculty, and students.
Musical Interlude by Music Department.

DEPARTMENT MEETINGS, TOURS, AND EXHIBITS FOR STUDENTS AND PARENTS

Art and Design	2:30-4 pm	Bldg. 34, Gallery
Child Development	2:30-4 pm	Bldg. 38, Rm. 125
English	2:30-4 pm	Bldg. 33, Rm. 286
Graphic Communication	2:30-4 pm	Bldg. 26, Rm. 209
History	2:30-4 pm	Bldg. 53, Rm. 201
Journalism	2:30-4 pm	Bldg. 26, Rm. 304
Liberal Studies	2:30-4 pm	Bldg. 65, Rm. 207
Modern Languages and Literatures	2:30-4 pm	Bldg. 12, Rm. 105A
Music	2:30-4 pm	Bldg. 45, Rm. 129
Philosophy	2:30-4 pm	Bldg. 47, Rm. 37
Political Science	2:30-4 pm	Bldg. 65, Rm. 204
Psychology	2:30-4 pm	Bldg. 65, Rm. 204
Social Sciences	2:30-4 pm	Bldg. 65, Rm. 204
Speech Communication (Communications Studies)	2:30-4 pm	Bldg. 10, Rm. 227
Theater Arts	2:30-4 pm	Spanos Theatre

COLLEGE ADVISING

College Advising Center Open	2:30-4 pm	Bldg. 47, Rm. 25G
Advising with Wendy Spradlin.		
Liberal Studies	2:30-4 pm	Bldg. 65, Rm. 207
Advising with Betty Sawyer.		
Political Science, Social Sciences and Psychology	2:30-4 pm	Bldg. 65, Rm. 204
Advising with Bonnie McKim.		

THEATER ARTS

<i>Crimes of the Heart</i> Rehearsal	7-11 pm	Bldg. 45, Rm. 212
--------------------------------------	---------	-------------------



College of Liberal Arts

CLASSES OPEN TO VISIT

ART AND DESIGN

Exhibition Design/Museum Studies with J. Clarke	9:10-11 am	Bldg. 34, Rm. 149
Ceramics with D. Badiali	9:10 am-Noon	Bldg. 34, Rm. 144

CHILD DEVELOPMENT

Supervised Study: Early Childhood with M. Berrio	9:10-1 pm	Bldg. 38, Rm. 125
PLEASE USE OBSERVATION BOOTH ONLY		

ENGLISH

Writing: Exposition with C. Curiel	9:10-10 am	Bldg. 22, Rm. 313
Writing: Exposition with H. Wilkinson	11:10 am-Noon	Bldg. 22, Rm. 313
Great Books I: Into to Classical Lit with M. Roberts	9:10-10 am	Bldg. 53, Rm. 213
Great Books III: Romanticism-Mod Lit with L. Coffman	9:10-10 am	Bldg. 22, Rm. 212
Great Books III: Romanticism-Mod Lit with A. Preston	9:30-10:40 am	Bldg. 10, Rm. 200
Great Books III: Romanticism-Mod Lit with L. Inchausti	9:30-10:40 am	Bldg. 10, Rm. 226
Great Books III: Romanticism-Mod Lit with L. Inchausti	10:50 am-Noon	Bldg. 10, Rm. 226
Introduction to Shakespeare with W. Fitzhenry	9:30-10:40 am	Bldg. 10, Rm. 111
Introduction to Shakespeare with W. Fitzhenry	10:50-Noon	Bldg. 10, Rm. 111

GRAPHIC COMMUNICATION

Digital Typography/Elec. Copy Prep with L. Donegan	7:40-9 am	Bldg. 10, Rm. 126
Web & Print Publishing with M. Kronemann	11:10 am-Noon	Bldg. 2, Rm. 13

LIBERAL STUDIES

Orientation to Liberal Studies with S. Duffy	10:10-11 am	Bldg. 10, Rm. 227
--	-------------	-------------------

MUSIC

Intro to Music Theory with A. Barata	8:10-9 am	Bldg. 45, Rm. 218
Intro to Music Theory with A. Barata	9:10-10 am	Bldg. 45, Rm. 130
Intro to Music Theory with J. Russell	9:10-10 am	Bldg. 45, Rm. 126
Intro to Music Theory with J. Russell	11:10 am-Noon	Bldg. 45, Rm. 126
Intro to Music Theory with D. Arrivee	10:10-11 am	Bldg. 45, Rm. 130
Music Appreciation with C. Russell	9:10-10 am	Bldg. 45, Rm. 218
University Jazz Band with P. Rinzler	11:10 am-Noon	Bldg. 45, Rm. 216
PolyPhonics with M. Brammeier	11:10 am-Noon	Bldg. 45, Rm. 218

POLITICAL SCIENCE

Intro to International Relations with C. Arceneaux	10:50 am-Noon	Bldg. 52, Rm. E45
--	---------------	-------------------



FRIDAY'S COLLEGE EVENTS

College of Science and Mathematics

ALL DEPARTMENTS

Admitted Students' Check-In
University Welcome
Informal Box Lunch (RSVP REQUIRED)
College Opening Session
College Information Room

9-Noon
11-11:30 am
11:45 am-12:15 pm
12:15-1:15 pm
1:30-4 pm

Mott Lawn
Recreation Center
University Union, Chumash
University Union, Chumash
Bldg. 25, Rm. 229

COLLEGE ADVISING CENTER

Walk-In Advising

9-11am, 1-3 pm

Bldg. 53, Rm. 219

HEALTH PROFESSIONS OFFICE

Health Professions Presentation
Walk-In Advising

9:30-10:30 am
1-3 pm

Bldg. 33, Rm. 285
Bldg. 53, Rm. 219

BIOLOGICAL SCIENCES DEPARTMENT

Welcome and Information
Department Tour
Question and Answer Session

9-11 am
1:30-3 pm
3-4 pm

Bldg. 33, Lobby
Bldg. 33, Lobby
Bldg. 33, Lobby

CHEMISTRY AND BIOCHEMISTRY DEPARTMENT

Chemistry Computer Lab Open
Welcome Room, Information, Alumni Room,
Video Presentation
Student Research Poster Display

9 am-4 pm
12-4 pm

Bldg. 52, Rm. D17
Bldg. 25, Rm. 125D

Chemistry Majors' Degree Program Session
Biochemistry Majors' Tour of Facilities
Biochemistry Majors' Degree Program Session
Chemistry Majors' Tour of Facilities
Ice Cream Social

1:30-4 pm
1:30-2:15 pm
1:30-2:15 pm
2:15-3 pm
2:15-3 pm
3-4 pm

Bldg. 25, Rm. 125 Atrium/Hallway
and Bldg. 52, Hallway
Bldg. 52, Rm. D17
Bldg. 25, Rm. 125 Atrium
Bldg. 52, Rm. D17
Bldg. 25, Rm. 125 Atrium
Bldg. 52, Courtyard Deck

KINESIOLOGY DEPARTMENT

Introduction to the Kinesiology Department
Tour of Kinesiology Facilities and Labs in Progress
Discussion Groups in Concentrations
"Things You Should Know But Forgot to Ask," Q & A

1:30-2 pm
2-3 pm
3-3:30 pm
3-4 pm

Bldg. 43A, Rm. 150
Bldg. 43A
Bldg. 43A, Rm. 150
Bldg. 43A, Rm. 150

MATHEMATICS DEPARTMENT

Department Chair, Faculty, and Student Panel
Welcome and Information
Math Placement Exams, No Preregistration Required

1:30-2:30 pm
2:30-4 pm
9 am-3 pm

University Union, San Luis Lounge
Bldg. 25, Rm. 208
Bldg. 25, Rm. 208

PHYSICS DEPARTMENT

Department Tour
Welcome and Information
Drop-In Student Advising
Info Available at Physics Department Office

1:30-2:30 pm
1:30-4 pm
2:30-4 pm
8 am-4 pm

Bldg. 52
Bldg. 52, Rm. D2
Bldg. 52, Rm. D2
Bldg. 52, Rm. D37

STATISTICS DEPARTMENT

Faculty and Student Panel
Welcome and Information Room
Tour of Department Facilities
Student Research and Poster Display

1:30-2:30 pm
2:30-4 pm
2:30-4 pm
2:30-4 pm

Bldg. 53, Rm. 213
Bldg. 25, Rm. 107F
Bldg. 25, Rm. 107F
Bldg. 25, Rm. 107F



Orfalea College of Business

ALL DEPARTMENTS

Admitted Students' Check-in	7:30 am-Noon	Mott Lawn
University Welcome	11-11:30 am	Recreation Center
Orfalea College of Business Dean's Welcome and Lunch	Noon-1 pm	Recreation Center

ADVISING CENTER OPEN HOUSE

Peer Advisors Available to Answer Questions	10 am-4 pm	Bldg. 3, Rm. 100
Advising Center Presentations	1:30-1:55 pm	Bldg. 3, Rm. 111
Advising Center Presentations	2:00-2:25 pm	Bldg. 3, Rm. 111

PART I OF CONCENTRATION AND DEGREE PROGRAM SESSIONS

Accounting	1:30-1:55 pm	Bldg. 3, Rm. 213
Economics Degree	1:30-1:55 pm	Bldg. 3, Rm. 113
Industrial Technology Degree	1:30-1:55 pm	Bldg. 3, Rm. 112
International	1:30-1:55 pm	Bldg. 3, Rm. 114

PART 2 OF CONCENTRATION AND DEGREE PROGRAM SESSIONS

Economics Degree	2-2:25 pm	Bldg. 3, Rm. 113
Finance	2-2:25 pm	Bldg. 3, Rm. 213
Industrial Technology Degree	2-2:25 pm	Bldg. 3, Rm. 112
International	2-2:25 pm	Bldg. 3, Rm. 114

PART 3 OF CONCENTRATION AND DEGREE PROGRAM SESSIONS

Accounting	2:30-2:55 pm	Bldg. 3, Rm. 114
Finance	2:30-2:55 pm	Bldg. 3, Rm. 213
Management/HRM	2:30-2:55 pm	Bldg. 3, Rm. 113
Management Info Systems	2:30-2:55 pm	Bldg. 3, Rm. 112
Marketing	2:30-2:55 pm	Bldg. 3, Rm. 111

PART 4 OF CONCENTRATION AND DEGREE PROGRAM SESSIONS

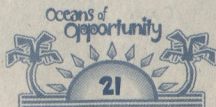
Management/HRM	3-3:25 pm	Bldg. 3, Rm. 113
Management Info Systems	3-3:25 pm	Bldg. 3, Rm. 112
Marketing	3-3:25 pm	Bldg. 3, Rm. 213

COMMEMORATIVE OPEN HOUSE T-SHIRTS FOR SALE!

Get your official Open House T-shirts. Only \$10 each or 2 for \$18!

Available on Friday at the Resource Fair, and at Friday Nite Invite.

Also available Saturday at the Open House Information Booth on Dexter Lawn.



FRIDAY'S SPECIAL EVENTS

DESIGN VILLAGE

9 am

Poly Canyon

This year's theme is: REFUGE: the challenge of dwelling after disaster. In its 32nd year, Design Village is a student design-build competition sponsored by the College of Architecture and Environmental Design (CAED) and student-run Design Village Club. Competing teams, in this intensive three-day event, carry materials for their self-designed shelters up scenic Poly Canyon, erect them, and live in them for three days/two nights. Visitors are invited; free admission for viewing courtesy of the Design Village Club and CAED, Friday from 2-4 pm and Saturday from 10 am-4 pm via shuttle from the base of Poly Canyon Road.

CAL POLY RODEO

2:30 pm

Rodeo Arena

Come join the Cal Poly Rodeo Club in a celebration of our western heritage at the 65th Annual Poly Royal Rodeo. Top college athletes from the western United States will be competing in nonstop intercollegiate rodeo action Friday and Saturday of Cal Poly's Open House weekend. Come on down for a helping of western hospitality. Tickets—\$8, general; \$5, seniors and students, children under 6, free. Purchase tickets at the rodeo grounds on the day of the event.

RODEO BBQ

5:30 p.m.

Madonna Inn, Expo Hall

CAL POLY BASEBALL VS. UC DAVIS

6 pm

Baggett Stadium

See the Cal Poly Mustangs at their finest! General admission is \$5, seniors and youth, \$3 at the beautiful Cal Poly Sports Complex.

ADMITTED STUDENTS

FRIDAY NITE INVITE: THE OCEAN COMMOTION!

8-11 pm

University Union

All admitted students are invited to participate in the first annual "Friday Nite Invite." This event provides a safe, drug-free, alcohol-free environment where you can meet soon-to-be classmates and become acquainted with the University Union. Enjoy cosmic bowling, arcade games, live bands, karaoke, games, rock-wall climbing, and refreshments.

PARENTS COFFEE HOUSE

8-11 pm

University Union, Chumash

Come and enjoy coffee and desserts while your students enjoy Friday Nite Invite. This coffee house event is a chance to mingle with other parents and ask questions of current Cal Poly students. Hosted by the Week of Welcome and the Cal Poly Parent Program.

2004 PARADE AWARDS

Best Use of Theme: Week of Welcome (WOW)

Most Spirit: Mustang Band

Most Creative: Poly Escapes

Best Overall: Week of Welcome (WOW)

Community Favorite: San Luis Obispo
Mother's Group

2005 PARADE PARTICIPANTS

Turf Club

Cal Poly Rodeo

Mustang Band

Dance Team

Stunt Team

Delta Delta Delta

The Wheelman

Black Student Union

Week of Welcome (WOW)

Tractor Pull

Chinese Student Association

Alpha Gamma Rho

Poly Goats

Chi Delta Theta

Philippino Cultural Club

Rose Float

Delta Sigma Phi

Sailing Team

Penguins Motorcycle Club

KJUG 98.1 FM

Housing Administration

SLO Day Program, Special Olympics

Gold Wing Touring Association—Chapter Q

Pugs in the Park

2004 CLUB BOOTH AWARDS

Best of Show: Poly Escapes

Best Use of Theme: Theatre Club

Best School Spirit: Materials Engineering

Best Club Spirit: Statistics Club

Best Overall Food: Vines to Wines

Best Tri Tip: Delta Chi

Best Original Ethnic Food: Chicano
Commencement

Best Dessert: CP Greek

Most Interactive: ROTC

Committee Favorite: Society of Civil
Engineering





KZQZ 93.3
The Central Coast's Best Station

99.7 KXSTY
The FM Rock Station

Q104.5
KID ROCK'S COUNTRY

AMERICAN
general media

KAL
92.5fm
CLASSIC COUNTRY

Wild
102.7fm

The Home Depot Of San Luis Obispo

Come in and see our selection of:

Mini Fridges

Desk Lamps

Fans

Storage Boxes and Bookshelves

Closet Organizers

Phones

Extension Cords

Cable/ Ethernet Wire and Accessories

Microwaves

Power Tools

BBQ's and Patio Sets

Cleaning Supplies

House Plants

Credit accounts with 10% off 1st purchase of up to \$200 on approved accounts

NOBODY BEATS OUR PRICES GUARANTEED!

Store location:

1551 Froom Ranch Way

San Luis Obispo, Ca 93405

(off the 101, west on Los Osos Valley Rd)

SATURDAY'S STUDENT RESOURCES

OPEN HOUSE INFORMATION BOOTH

8 am-4 pm

Dexter Lawn

Meet Open House Committee members, buy an event t-shirt, obtain event information.

CAMPUS TOURS

POLY REPS will lead campus tours. All tours are walking tours of the campus that provide an overview of the University and its facilities. Tours will leave on the hour, every hour, from Dexter Lawn between 11 am and 2 pm (last tour leaves at 2 pm).

PRESENTATIONS AND SESSIONS

Housing and Residential Life

Noon, 2 pm

Sierra Madre Residence Hall (Bldg. 113)

Parent Info Session

Housing and Residential Life

Noon, 2 pm

Yosemite Residence Hall (Bldg. 114)

Student Info Session

Web Resources for Parents

1:30-2:30 pm

University Union, Bishops Lounge

The Parent Program provides tips and helpful links to finding information and resources for parents on the Cal Poly Web site.

DEPARTMENTS OPEN FOR VISIT

Admissions Office

10 am-2 pm

Bldg. 1, Rm. 206

ASI Recreational Sports

8:30 am-7:30 pm

Recreation Center

Enjoy self-guided tours of the Recreation Center.

Cal Poly Continuing Education

10 am-3 pm

Dexter Lawn

Come and check out the summer Spanish language programs in Spain and Mexico and the summer archaeological field school. We'll be located at the Alumni Association hospitality booth.

El Corral Bookstore

9 am-5 pm

University Union Plaza

Shop at our main store, located in the University Union, for all required and recommended courseware as well as a fully stocked student and office supply section, Tech Center with the latest computer hardware, software and peripherals, Cal Poly insignia clothing and gift section, general reference and reading books, magazines, seasonal gifts and greeting cards, health and beauty aids and snack foods. We also provide online information and shopping including discounted textbooks by using textbook reservations on our Web site: www.elcorralbookstore.com.

Housing and Residential Life

10 am-4 pm

Residence Halls

Tours of the residence halls are self-guided. Flyers and maps are available at the "Housing Info Center" located between Santa Lucia (Bldg. 106) and Sequoia Halls (Bldg. 108), across from the Administration Building. Although the Housing Office will be closed Saturday, all Housing staff will be located at the "Housing Info Center."

Health and Counseling Services

10 am-4 pm

Bldg. 27

First aid and urgent medical care available.

Robert E. Kennedy Library

10 am-5 pm

Bldg. 35

HELP US IMPROVE...WE NEED YOUR INPUT!

Your Opinion Matters

Thank you for coming! Our goal is to provide our visitors with a fun and productive event which enables them to discover the myriad of opportunities and resources at Cal Poly.

Within a week, you will receive an e-mail with a link to our survey.

Please take a few minutes to tell us about your experience at Open House.



SATURDAY'S COLLEGE EVENTS

College of Agriculture

ALL DEPARTMENTS

Information Booth	All Day	Via Carta and Perimeter
Swanton Pacific Ranch Display	All Day	Bldg. 9, Farm Shop
Shuttle between Farm Shop and the Beef Unit, Horse Unit, and EHS Unit	All Day	Pick up at Farm Shop

AGRI-BUSINESS

Agribusiness Display	All Day	Bldg. 9, Farm Shop
Display with Emphasis on Agribusiness	All Day	Bldg. 10, Rm. 206
Learn about finance/appraisal, marketing, policy, and farm and ranch management.		

AGRICULTURAL EDUCATION AND COMMUNICATION

Hands-on, "Learn by Doing" Demonstrations	All Day	Bldg. 9, Farm Shop
---	---------	--------------------

ANIMAL SCIENCE

Display Featuring New Technologies in Veterinary Medicine, Animal, Poultry Production, and Biotechnology	All Day	Bldg. 9, Farm Shop
Beef Showmanship Contest	9 am-Noon	Bldg. 16
Beef Processing Demonstration	10 am-2 pm	Bldg. 24, Rm. 107
Equine Embryo Transfer	11 am-Noon	Equine Breeding Barn
Animal Reproduction and Fertilizer Display	All Day	Bldg. 9, Farm Shop
Embryo Manipulation	11:30 am, 12:30 & 1:30 pm	Bldg. 9, Farm Shop
Cal Poly Dressage Team	12-1 pm	Bldg. 32, Equine Center, Arena
Cal Poly Equestrian Team	1-2 pm	Bldg. 32, Equine Center, Arena
Ranch Horse Enterprise Project	11 am-1 pm	Bldg. 32, Equine Center

BIORESOURCE AND AGRICULTURAL ENGINEERING

Display Featuring BioResource and Agricultural Engineering	All Day	Bldg. 9, Farm Shop
Display Featuring Irrigation Technology and BRAE Projects	All Day	Behind Bldg. 8
Showcasing senior projects, survey equipment, precision agriculture, and mechanical systems.		
Truck and Tractor Pull	1 pm	Field across from Crops Unit

DAIRY SCIENCE

Display of Dairy Science Major	All Day	Bldg. 9, Farm Shop
Featuring the latest technology in the dairy industry.		
Dairy Cattle Fitting and Showing Contest	9 am-Noon	Bldg. 18, Rm. 1
Students compete to determine the best at fitting and showing.		
Dairy Milking Parlor Tour	11 am, 11:30 am, Noon	Bldg. 18, Rm. 1

EARTH AND SOIL SCIENCES

Earth and Soil Science Display	All Day	Bldg. 9, Farm Shop
Showcasing senior projects, MESA Ag Initiative and student and faculty research projects focused on enhancement of environmental quality.		

FOOD SCIENCE AND NUTRITION

Food Science and Nutrition Displays	All Day	Bldg. 9, Farm Shop
Learn about our food science and nutrition major's exciting research, community-based learning, student team activities, and enterprise projects.		
Cal Poly Chocolates Demonstration	10:30 am-2 pm	Bldg. 24, Rm. 103
Nutrition Club: Body Composition & Diet Analysis, Nutrition Q & A	10:30 am-2 pm	Bldg. 9, Farm Shop
Food Science Club: Jam Production and Pilot Plant Tours	10:30 am-2 pm	Bldg. 24, Pilot Plant
Product Development Team Demonstration	10:30 am-2 pm	Bldg. 24, Pilot Plant
Parent and Alumni Lounge	10:30 am-2 pm	Bldg. 24, Rm. 113



College of Agriculture

HORTICULTURE AND CROP SCIENCE

Horticulture and Crop Science Display
Fruit Science Displays

View grapes, citrus and avocados, and other deciduous fruits grown by horticulture students.

Guided Tours of Cal Poly Organic Farm
Community Flower Show

Sponsored by Pi Alpha Xi, the horticulture honorary society, flowers and plants grown by the local community on display.
Educational Displays on a Variety of Horticultural Topics
Play Miniature Golf on Real Creeping Bentgrass Green
Student Enterprise Project Sale
Post-Harvest Display

All Day
All Day

All Day
All Day

All Day
All Day
All Day
All Day

Bldg. 9, Farm Shop
Bldg. 11, Rm. 112

Bldg. 11, Rm. 112
Bldg. 11, Rm. 103

local community on display.
Bldg. 48
Behind EHS Unit
Poly Plant Shop
Bldg. 11, Rm. 115

MILITARY SCIENCE

Climbing Wall
Army Signal Equipment
Armored Vehicle Display/Army Transportation Equipment
ROTC Info

10:30 am-4 pm
10:30 am-4 pm
1 pm
10:30 am-4 pm

Dexter Lawn
Dexter Lawn
@Tractor Pull
Bldg. 9, Farm Shop

NATURAL RESOURCES MANAGEMENT

Displays and PowerPoint Presentation Featuring Forestry,
Natural Resources Management, and Environmental
Management and Protection Majors.

Cal Poly Logging Team Live Demonstration

All Day

Bldg. 9, Farm Shop

10:30 am-4 pm

Via Carta and N. Perimeter

Featuring an axe-throwing contest for spectators.

RECREATION, PARKS, TOURISM AND MANAGEMENT

Interactive Demonstration of a "Challenge Course"

All Day (on the hour)

Bldg. 9, Farm Shop

CAL POLY RODEO

Rodeo

5 pm

Rodeo Arena

Come join the Cal Poly Rodeo Club in a celebration of our western heritage at the 65th Annual Poly Royal Rodeo. Top college athletes from the western United States will be competing in nonstop intercollegiate rodeo action Friday and Saturday of Cal Poly's Open House weekend. Come on down for a helping of western hospitality. Tickets—\$8, general; \$5 seniors and students, children under 6, free. Purchase at rodeo grounds on the day of the event.

Rodeo Dance at Madonna Inn

9 pm

Madonna Inn Expo Hall

POLY ROYAL RODEO: Celebrating 65 Years of Rodeo Tradition

Cal Poly Rodeo Arena

Friday, April 15, 2:30 pm and Saturday, April 16, 5:00 pm

Tickets Available at the Gate

General Admission - \$8.00

Students & Seniors - \$5.00

Children 6 & under - free

KICKOFF BARBEQUE—Madonna Inn Expo Building

Friday, April 15, 2005, 5:30 pm

Texas Hold'em Tournament—Immediately following BBQ

ALUMNI TEAM ROPING

Saturday, April 16, 2005, 8 am

RODEO DANCE— Madonna Inn Expo Building

Saturday, April 16, 2005, 9 pm to 1 am

No Host Bar

Advance Tickets \$10—Contact a Rodeo Club Member

At the door \$15

Call 805-756-5370 for more information.



Clint Cooper, Cal Poly Rodeo Team captain. Ranked 3rd in the nation 2004.

SATURDAY'S COLLEGE EVENTS

College of Architecture and Environmental Design

ALL DEPARTMENTS

CAED Open House and Alumni Welcome	10 am-4 pm	Bldg. 5, Rm. 212, Lobby
CAED Student Work Exhibit	10 am-4 pm	Gallery, Bldg. 5, Rm. 105
Walk-in Advising, CAED Advising Center	10 am-4 pm	Bldg. 5, Rm. 212, 221
College Tours by Alpha Rho Chi and CAED Ambassadors	10 am-4 pm	Bldg. 5, Upper Stair Court
Robert Hifumi Odo Memorial Scholarship Display	10 am-4 pm	Bldg. 5, Rm. 212, Lobby
Design Village Competition	10 am-4 pm	Poly Canyon
This year's theme is: REFUGE: the challenge of dwelling after disaster. In its 32nd year, Design Village is a student design-build competition sponsored by the College of Architecture and Environmental Design (CAED) and student-run Design Village Club. Competing teams, in this intensive three-day event, carry materials for their self-designed shelters up scenic Poly Canyon, erect them, and live in them for three days/two nights. Visitors are invited; free admission for viewing courtesy of the Design Village Club and CAED on Friday from 2 pm-4 pm and Saturday from 10 am-4 pm via a shuttle from the base of Poly Canyon Road. http://designvillage.calpoly.edu		
Design Village Free Shuttle Service	10 am-4 pm	Poly Canyon Gate
Design Village Judging of Structures (Awards ceremony, Sunday @ 11 am)	10 am-2 pm	Poly Canyon
Dedication of Peter and Ida Mae Berg Gallery Refreshments served.	1:30-2:30 pm	Gallery, Bldg. 5, Rm. 105

ARCHITECTURAL ENGINEERING

ArcE Labs and Student Work Exhibits	10 am-5 pm	Bldg. 21, Rm. 122 B,C, D, E
Department Tours	11 am, 1 pm, 3 pm	Bldg. 21, Rm. 122A
Material Testing Demonstrations	11:10 am, 1:10 pm	Bldg. 21, Rm. 122A
ArcE Annual Alumni Luncheon *by reservation only	11:30 am-1:30 pm	Bldg. 21, Courtyard

ARCHITECTURE

High School Summer Career Workshop Exhibit	10 am-5 pm	Bldg. 5, Rm. 212
Student Work Exhibits	10 am-5 pm	Bldgs. 5 & 21

CITY AND REGIONAL PLANNING

Display of Award-winning Student Projects	10 am-5 pm	Bldg. 34, Hallway near Rm. 251
Student Resource Center Exhibit	10 am-5 pm	Bldg. 34, Rm. 167
House Workshop & Demonstration	11:30 am, 1:30 pm	Bldg. 34, Rm. 134
Alumni Reception	2-3 pm	Bldg. 34, Hallway near Rm. 251

CONSTRUCTION MANAGEMENT

Educational Displays and Exhibits	10 am-5 pm	Bldg. 21, Rm. 120A
Heavy Equipment Display	10 am-5 pm	Front of Kennedy Library

LANDSCAPE ARCHITECTURE

Student Exhibits	10 am-5 pm	Bldg. 34, South Wing, Upper Lobby, Halls and Rm. 210; South Dexter Patio
------------------	------------	--

OPEN HOUSE HISTORY

The first open house event on campus, "Farmers' Picnic", began in 1904. By 1933 the event had evolved into a multiple-day event known as Poly Royal. Featured events included a parade, livestock judging, agriculture shows, horticulture exhibits, and barbecues. Open House was born in 1994, four years after the last Poly Royal. Open House combines the best of Farmers' Picnic and Poly Royal traditions, in addition to new events, including Friday's Admitted Students' Preview Day, to create a premiere showcase weekend for the University.



College of Engineering

ALL DEPARTMENTS

Centennial Celebration Alumni Luncheon

11 am-12:30 pm

Chumash Auditorium

Alumni, faculty and friends of the college celebrate the achievements of our distinguished college alumni. With welcoming remarks by the dean, awards presentations, and a delicious lunch buffet, everyone will enjoy renewing old acquaintances and making new ones in a festive atmosphere.

AEROSPACE ENGINEERING

Open Labs and Demonstrations

10:30 am-3 pm

Bldg. 7; Bldg. 4/Aero Hangar;
Bldg. 58

Hospitality Room

10:30 am-3:00 pm

Bldg. 7, ATL

The Aerospace Engineering Department invites all of its alumni to drop by our Flight Simulation Lab for coffee and light refreshments.

CIVIL AND ENVIRONMENTAL ENGINEERING

Hospitality Room

10:30 am-12:30 pm

Bldg. 13, Rm. 118

The Civil and Environmental Engineering Department invites alumni and conditionally admitted students and their parents to drop by the Hospitality Room to enjoy a continental breakfast. Faculty will be available to answer questions.

Popsicle Stick Bridge Contest

10 am-4 pm

Bldg. 13, Rm. 123

Open to local high school students. This competition focuses on structural design intuition and dexterity in construction techniques using ordinary wooden Popsicle sticks.

COMPUTER ENGINEERING

Hospitality Room

10:30 am-4 pm

Bldg. 20, Rm. 118

CPE faculty and students will be available to discuss the Computer Engineering Program. Refreshments will be served.

RoboRodentia XI

1-4 pm

Recreation Center

The Cal Poly Institute of Electrical Engineers Computer Society (IEEE-CS) and the Computer Engineering Program present this annual event where robots, created by multidisciplinary student and community teams, compete to find and retrieve racquetballs in a large maze. Admission is free.

COMPUTER SCIENCE AND SOFTWARE ENGINEERING

Hospitality Room

11 am-3 pm

Bldg. 14, Rm. 232

Talk with faculty and students. Light refreshments will be served.

ELECTRICAL ENGINEERING

Hospitality Room

10:30 am-4 pm

Bldg. 20, Rm. 111

Alumni, prospective students and parents, and campus visitors are invited to come by and enjoy free refreshments. Faculty and students will be on hand to answer your questions.

Open Labs

10:30 am-4 pm

Bldg. 20

INDUSTRIAL AND MANUFACTURING ENGINEERING

Interactive Booth

10 am-4 pm

Dexter Lawn, Carnival Area

Students will be staffing the booth providing information about departments, t-shirts, games, and a free, personally engraved keychain. Alumni, parents, current and prospective students, come by and enjoy free refreshments. Faculty and students will be on hand to answer your questions.

Open Lab Tours

11 am and Noon

Dexter Lawn (meet at booth)

We will give a tour of the lab facilities and answer questions. There will be demonstrations and sample projects completed by IE students.

MATERIALS ENGINEERING

Alumni Continental Breakfast

9-11 am

Bldg 12, Rm 107H

Alumni, spouses, and friends are invited to meet, mingle, and visit with faculty while enjoying a continental breakfast hosted by the Materials Engineering Department in their Building 12 office.

MECHANICAL ENGINEERING

Hospitality Room

11 am-3 pm

Bldg. 13, Rm. 110

Open Labs

11 am-3 pm

Bldg. 13

Various labs and the machine shop will be open and running experiments.



SATURDAY'S COLLEGE EVENTS

College of Liberal Arts

ALL DEPARTMENTS

Students Booths and Exhibits	10 am-4 pm	Dexter Lawn
"Where Do We Go From Here"	11-12:15 am	Christopher Cohan Center, Phillips Hall
Speakers panel on careers for liberal arts majors.		

ART AND DESIGN DEPARTMENT

Annual Student Juried Exhibit	10 am-4 pm	Bldg. 34, Gallery
-------------------------------	------------	-------------------

GRAPHIC COMMUNICATION DEPARTMENT

Tours and Exhibits	10 am-4 pm	Bldg. 26, Rm. 209
Press facility tours: Electronic Publishing Lab; Color & Quality Analysis Lab; Digital Imaging Lab; Printing Press Labs: lithography, gravure, flexograph, screen printing; Web Press Lab; Binding & Finishing Lab; Substrates, Inks & Toner Lab; Shakespeare Press Museum.		

JOURNALISM DEPARTMENT

Tours and Exhibits	10 am-4 pm	Bldg. 26, 2nd Floor
Cal Poly TV, <i>Mustang Daily</i> , KCPR radio, public relations display.		

ALL DEPARTMENTS

Readings by Cal Poly Award Winning Fiction Writers & Poets	7-9:30 pm	Bldg. 19, Sandwich Factory
--	-----------	----------------------------

MUSIC DEPARTMENT

Cal Poly Open House Concert: The Musical Magic of Walt Disney's <i>Fantasia</i>	8 pm	Christopher Cohan Center
Performance by the Cal Poly Symphony, Wind Ensemble, and the University Jazz Band. Tickets (\$15-\$18, general/\$15-\$15, seniors/\$9-\$11, students) may be ordered from the Performing Arts Ticket Office: http://www.pacslo.org or by calling 805.756.2787.		

Your Convenient One-Stop Shopping Center

Anime Express

Albertsons

Bella Gente

Big Daddy's Pizza

Burger King

Carla's Fashions

Central Coast Pure Water

Century 21 Team Realty

Check Into Cash

Cingular Wireless

Eurotan

General Nutrition Center

Jenny Craig

Laguna BBQ & Brew

Laguna Cleaners

Launderosa Laundromat

Longs Drugs

Los Padres Bank

Mandarin Gourmet

Mattress & Bed Superstore

Merle Norman Cosmetics

Merry Go Round

Nautical Bean

Ocean Nails & Spa

Open Air Flowers


Sakura

Subway

Taco Roco

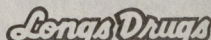
Upper Crust

FREE PARKING!

 **Albertsons**


LAGUNA VILLAGE
SHOPPING CENTER

FREE PARKING!

 **Longs Drugs**

At the corner of Los Osos Valley Road and Madonna Road in San Luis Obispo.



College of Science and Mathematics

ALL DEPARTMENTS

College Information and Alumni Room
Tours by CSM Ambassadors
College Advising Center Walk-in Advising
Health Professions Peer Advising

10 am-4 pm
10 am-4 pm
10 am-Noon, 1:30-3 pm
10 am-Noon, 1:30-3 pm

Bldg. 25, Rm. 229
Bldg. 25, Rm. 229
Bldg. 53, Rm. 219
Bldg. 53, Rm. 219

BIOLOGICAL SCIENCES DEPARTMENT

Welcome/Information/Displays/Alumni
Drop-in Q & A
Self-guided Tours of the Cal Poly Plant Conservatory
Department Tours

10 am-3 pm
10 am-3 pm
Noon-2 pm
10 am, Noon, 2 pm

Bldg. 33, Lobby
Bldg. 33, Lobby
Bldg. 53
Bldg. 33, Lobby

CHEMISTRY AND BIOCHEMISTRY DEPARTMENT

Chemistry Computer Lab Open
Polymers and Coatings Lab
Student Research Poster Display
Welcome Room, Info, and Drop-in Q & A,
Alumni Room--Video Presentation
Chemistry Magic Show

9 am-4 pm
10 am-2:30 pm
10 am-4 pm
Noon-4 pm

Bldg. 52, Rm. D17
Bldg. 52, Rm. B7
Bldg. 25, Rm. 125, Atrium
Bldg. 25, Rm. 125, Atrium

1 pm, 3 pm

Bldg. 52, Rm. B5

KINESIOLOGY DEPARTMENT

Introduction to the Kinesiology Department
Tour of Kinesiology Facilities and Labs in Progress
Discussion Groups in Concentrations
"Things You Should Know But Forgot to Ask" Q & A
Drop-in to Ask Questions

10-10:30 am
10:30-11:30 am
11:30 am-Noon
Noon-12:30 pm
12:30-2 pm

Bldg. 43A Rm. 150
Bldg. 43A, Rm. 150
Bldg. 43A, Rm. 150
Bldg. 43A, Rm. 150
Bldg. 43A, Rm. 451

MATHEMATICS DEPARTMENT

Welcome and Information
Math Displays, Exhibits, Games, and Puzzles

10 am-2 pm
10 am-4 pm

Bldg. 38, Rm. 204
Bldg. 38, Rm. 204

PHYSICS DEPARTMENT

Hospitality Room, Student Advising, and Q & A
Society of Physics Students--Demos and Mini Talks

10 am-2 pm
10 am-2 pm

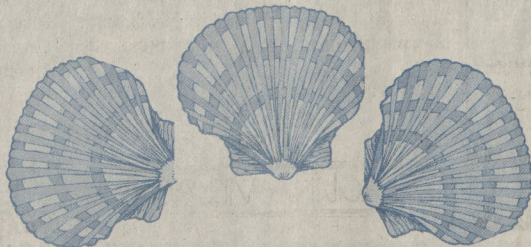
Bldg. 52, Rm. D2
Bldg. 52, E-Wing

STATISTICS DEPARTMENT

Department and Program Information
Student Research and Poster Display

10 am-4 pm
10 am-4 pm

Bldg. 25, Rm. 107F
Bldg. 25, Rm. 107F



SATURDAY'S COLLEGE EVENTS

Orfalea College of Business

INFORMATION BOOTH

OCOB Information Booth

10:30 am-3 pm

Dexter Lawn (red brick sidewalk
walk near Bldg. 2)

INDUSTRIAL TECHNOLOGY DEPARTMENT OPEN LABS

Plastics Processing Lab
Electronics Lab
Packaging Design
CAD Lab
Metals Processing Lab
Packaging Testing

10 am-2 pm
10 am-2 pm
10 am-2 pm
10 am-2 pm
10 am-2 pm
10 am-2 pm

Bldg. 21, Rm. 131
Bldg. 21, Rm. 132
Bldg. 21, Rm. 132P
Bldg. 21, Rm. 134
Bldg. 21, Rm. 135
Bldg. 21, Rm. 13

SAVE THE DATE: OPEN HOUSE 2006
APRIL 21-22, 2006

Looking for a place to live?



You're investing the future of your child. Why not invest in yours as well? Our housing market is extremely limited, building is heavily regulated, and demand continues to outpace supply. Teach the lessons of life. Invest in a home now and enjoy the tax benefits, strong appreciation, and the responsible side of your child together maintaining your investment.



WE CAN HELP!

DANNY SULLIVAN

REALTOR ASSOCIATE

805.704.3335

CAL POLY GRAD '99

DANNY.SULLIVAN@ERA.COM



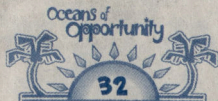
STEPHANIE ROTHBAUER

LOAN SPECIALIST

805.238.3787 x207

CAL POLY GRAD '00

SROTHBAUER@HOTMAIL.COM

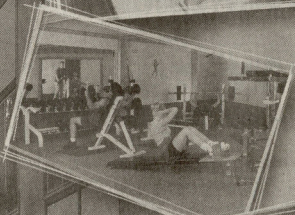


Stenner Glen

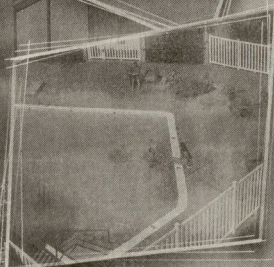
STUDENT LIVING AT ITS FINEST



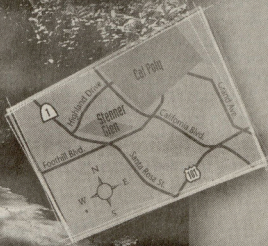
- Cafeteria
- Menu Choices
- Fitness Center
- Swimming Pool
- Tutoring
- Study Hall



- Computer Lab
- Resident Assistants
- Uniformed Security
- Planned Activities
- Utilities Paid



- Direct TV
- High Speed Internet
- Quiet Buildings
- Laundry Rooms
- Recreation Center
- Large Screen TV



Virtual Tours of Suites Available
at www.stennerglen.com

1050 Foothill Boulevard
San Luis Obispo, CA 93405

Leasing Office: (800) 734-1744

email: stennerglen@stennerglen.com
web: www.stennerglen.com

SATURDAY'S SPECIAL EVENTS

POLY ROYAL PARADE

9 am

Inner Perimeter @

Grand Avenue

The Poly Royal Parade is back for Open House weekend! Campus clubs and organizations, as well as community members, will be participating. The route will be along Perimeter Road on the Cal Poly campus and will end at Kennedy Library to Kick-off Opening Ceremonies at Dexter Lawn.

WOMEN'S LACROSSE VS USC

10 am

Sports Complex

Come out and watch the four-time national champions take on USC. Everyone is welcome and encouraged to come.

MAIN STAGE

10 am-4 pm

Dexter Lawn

Festivities begin with Opening Ceremonies and end with the presentation of booth-judging awards. Campus clubs and organizations will showcase their talents from dancers to music and demonstrations. The schedule of events will be posted around campus; come out and "sea" the show!

OPEN HOUSE CARNIVAL

10:30 am-4 pm

University Union Plaza

Carnival is a special section of booths set aside for interactive activities. Kids of all ages are welcome to participate in all sorts of games ranging from bounce house to sandcastle building. There will be various types of carnival food such as popcorn, cotton candy, and other snacks.

POPSICLE STICK BRIDGE CONTEST

10 am-4 pm

Bldg. 13, Rm. 123

Open to local high school students. This competition focuses on structural design intuition and dexterity in construction techniques using ordinary wooden Popsicle sticks.

DESIGN VILLAGE COMPETITION

10 am-4 pm

Poly Canyon

This year's theme is: REFUGE: the challenge of dwelling after disaster. In its 32nd year, Design Village is a student design-build competition sponsored by the College of Architecture and Environmental Design (CAED) and student-run Design Village Club. Competing teams, in this intensive three-day event, carry materials for their self-designed shelters up scenic Poly Canyon, erect them, and live in them for three days/two nights. Visitors are invited; free admission for viewing courtesy of the Design Village Club and CAED, Saturday, 10 am-4 pm, via a shuttle from the base of Poly Canyon Road.

AG PAVILION

10 am-4 pm

Bldg. 9, Farm Shop

The College of Agriculture is presenting, in one location, interactive/hands-on displays from all of the departments and programs. Come and "learn-by-doing" about our exciting majors.

CONCESSION BOOTHS AND CLUB DEMONSTRATIONS

10:30 am-4 pm

Campus-wide

Campus clubs and organizations come out to show off and sell stuff.

CAL POLY PLANT CONSERVATORY

Noon-2 pm

Bldg. 53

Self-guided tours.

CAL POLY SOFTBALL VS. PACIFIC

Noon & 2 pm

Bob Janssen Field

See the Cal Poly Mustangs at their finest! General admission is \$5, seniors and youth, \$3 at the beautiful Cal Poly Sports Complex.

AGRICULTURAL ENGINEERING SOCIETY TRUCK AND TRACTOR PULL

1 pm

Across from Crops Unit

This year marks the 27th Truck/Tractor Pull held in conjunction with Poly Royal/Open House. Competitors from the western United States will compete in the following pull classes: injected, blown, and unlimited mini-modified tractors; country modified and pro-modified 4WD and 2WD trucks; single, multi-engine, and superstock tractors. Tickets are \$7 for adults, \$3 for children under 10. Tickets will be available at the BRAE building (Bldg. 8 across from Campus Market) on Friday and at the gate on Saturday. Proceeds benefit the BRAE student scholarship fund. The competition begins at 1 pm, so come and cheer on Cal Poly's own "Mustang Fever!"

MEN'S LACROSSE VS. SONOMA STATE

1 pm

Sports Complex, Field 4

Come out and support your Men's Lacrosse Club vs. Sonoma State. Both teams are ranked in the top 15 in the nation.



CAL POLY RODEO

Come join the Cal Poly Rodeo Club in a celebration of our western heritage at the 65th Annual Poly Royal Rodeo. Top college athletes from the western United States will be competing in nonstop intercollegiate rodeo action Friday, Saturday, and Sunday of Cal Poly's Open House weekend. Come on down for a helping of western hospitality. Tickets—\$8 general, \$5 seniors, students, children under 6, free. Purchase at rodeo grounds on the day of the event.

5 pm

Rodeo Arena

ROBORODENTIA XI

The Cal Poly Institute of Electrical and Electronic Engineers Computer Society (IEEE-CS) and the Computer Engineering Program present this annual event where robots, created by multidisciplinary student and community teams, compete to find and retrieve racquetballs in a large maze. Admission is free.

1-4 pm

Recreation Center

CHEMISTRY MAGIC SHOW BASEBALL VS. UC DAVIS

See the Cal Poly Mustangs at their finest! General admission is \$5, seniors and youth, \$3 at the beautiful Cal Poly Sports Complex.

1 and 3 pm

Bldg. 52, Rm. B5

6 pm

Baggett Stadium

MUSIC DEPARTMENT'S

8 pm

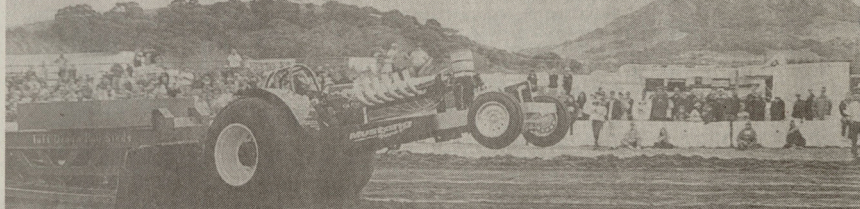
Christopher Cohan Center

OPEN HOUSE CONCERT: THE MUSICAL MAGIC OF WALT DISNEY'S FANTASIA

The Music Department celebrates Cal Poly's Open House by featuring many of its most popular musical groups: the Symphony, Wind Ensemble, and the University Jazz Band. Everyone is invited to this popular concert designed to provide the audience with an evening of entertainment and variety. Ample parking is available! Tickets (\$15 and \$18 general—\$9 and \$11, students) may be ordered from the Performing Arts Ticket Office, online at: <http://www.pacslo.org>, or by calling 805.756.2787.

2005 Poly Royal

Truck & Tractor Pull!!



This year marks the 27th Truck/Tractor Pull held in conjunction with Poly Royal/Open House. Competitors from the western United States will compete in the following pull classes: injected, blown, and unlimited mini-modified tractors; country modified 4WD and 2WD trucks; single, multi-engine, and superstock tractors. Tickets are \$7 for adults and \$3 for children under 10. Tickets will be available at the BRAE building (Build. 8, across from Campus Market) on Friday and Saturday morning as well as at the gate on Saturday. Proceeds benefit the BRAE student scholarship fund. The competition begins at 1:00, so come and cheer on Cal Poly's own Mustang Fever!!



SUNDAY'S SPECIAL EVENTS

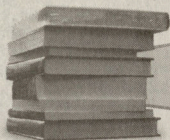
Sunday is the perfect day to continue to acquaint yourself with Cal Poly. As the weekend winds down you can catch a baseball game and much more!

10 am	Women's Lacrosse Come out and watch the four-time national champions take on UCSD. Everyone is welcome and encouraged to come.	Sports Complex
10 am-Midnight	Robert E. Kennedy Library	Bldg. 35
10-11 am	Design Village Awards Ceremony See the winners of this unique competition.	Poly Canyon
11 am-2 pm	El Corral Bookstore is Open Shop at our main store, located in the University Union, for all required and recommended courseware as well as a fully stocked student and office supply section, Tech Center with the latest computer hardware, software and peripherals, Cal Poly insignia clothing and gift section, general reference and reading books, magazines, seasonal gifts and greeting cards, health and beauty aids and snack foods. We also provide online information and shopping including discounted textbooks by using textbook reservations on our Web site: www.elcorralbookstore.com	University Union Plaza
Noon	Softball vs. Pacific See the Cal Poly Mustangs at their finest! General admission is \$5, seniors and youth, \$5 at the beautiful Cal Poly Sports Complex.	Bob Janssen Field
2:30 pm	All-state Wind Orchestra and Jazz Band Festival Concert The state's finest young musicians are chosen by recorded audition to participate in this event. Juan Ringer from Argentina will conduct the Festival Wind Orchestra. Pianist Mark Levine will be the Festival Jazz Band's guest soloist. Tickets \$13-\$16, general/\$11-\$14, seniors/\$7-\$10, students) may be ordered from the Performing Arts Ticket Office: http://www.pacslo.org or by calling 805.756.2787.	Christopher Cohan Center
6 pm	Baseball vs. UC Davis See the Cal Poly Mustangs at their finest! General admission is \$5, seniors and youth, \$5 at the beautiful Cal Poly Sports Complex.	Baggett Stadium



Do your Cal Poly shopping online

Check out our New Website



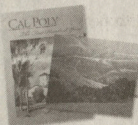
Textbooks & Courseware

Save 10% by Reserving your Textbooks.



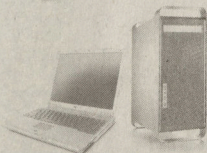
Supplies

Purchase all student supplies & kits.
Reserve your Textbooks and receive a coupon to
save 10% on in-store purchases of student supplies.



Books

Cal Poly Authored titles &
New York Times Bestsellers.



Computers

Direct links to Apple, Dell & Gateway with
educational pricing.



Cal Poly Merchandise

Web Specials & new items every week.



EL CORRAL BOOKSTORE

www.elcorralbookstore.com



OPEN HOUSE THANKS ALL OF OUR

Agriculture Business Management/MAMA
Agriculture Communicators of Tomorrow
Agriculture Engineering Society
Air Conditioning and Refrigeration
Alpha Chi Omega
Alpha Chi Sigma
Alpha Epsilon Pi
Alpha Gamma Rho
Alpha Kappa Delta Phi
Alpha Kappa Psi
Alpha Omicron Pi
Alpha Phi
Alpha Phi Epsilon
Alpha Phi Omega-Community Service Fraternity
Alpha Pi Sigma
Alpha Psi Omega
Alpha Rho Chi
American Chemical Society
American Foundry Society
American Indian Science and Engineering Society
American Indian Student Association
American Institute of Aeronautics and Astronautics
American Institute of Architecture Students
American Marketing Association
American Society of Mechanical Engineers
American Student Dental Association
Asian & Pacific Islander Student Leadership Commission
Asian American Christian Fellowship
Associated Students in Planning
Associated Students of Construction Management
Associated Students, Inc.
Association for Computing Machinery
Association of Environmental Professional
Badminton Club
BioMedical Engineering Society
Biotechnology Club
Black Student Union
Cal Poly Accounting Club
Cal Poly Amateur Radio Club
Cal Poly Cheerleading (Stunt Team)
Cal Poly College Republicans
Cal Poly Country Line Dancing Club
Cal Poly Dance Team
Cal Poly Democrats
Cal Poly Equestrian Team
Cal Poly Fencing
Cal Poly Field Hockey Club
Cal Poly Radio--KCPR
Cal Poly Robotics Club
Cal Poly Rose Float
Cal Poly Salsa Club

Cal Poly Scuba Club
Cal Poly Space Systems
Cal Poly Swing Club
Cal Poly Symphony Club
Cal Poly Teachers Society
Cal Poly Tractor Pull Team
Cal Poly Vet Science Club
Cal Poly Waterski Team
California Student Sustainability Coalition
Campus Advocacy Mentorship Program
Campus Crusade for Christ
Chi Delta Theta
Chi Epsilon
Chicano Commencement Committee
Children Using Language to Understand Our
Earth (CULTURE) Club

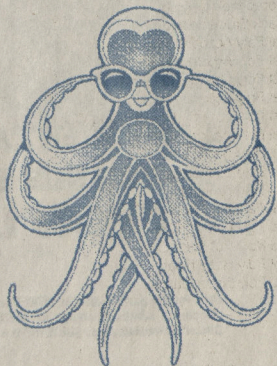
Chinese Christian Fellowship
Chinese Student Association
College of Arch and Environmental Design Council
College of Liberal Arts Ambassadors
College of Liberal Arts Student Council
College of Science and Mathematics Ambassadors
Crops Club
Cutting and Reining
Delta Chi
Delta Delta Delta
Delta Sigma Phi
Delta Sigma Pi
Delta Upsilon
Design Build Institute of America
Dressage Team
Earth, Soil, and Water Conservation Club
Engineering Student Council
Engineers without Borders
Entrepreneurship Club
Financial Management Association
Food Science Club
Friends of Shakespeare Press Museum
Future Truck
Gamma Phi Beta
Gays, Lesbians, Bisexuals United
Habitat for Humanity (Poly Habitat)
Hellenic American Organization aka Greek Club
Hispanic Business Student Association
Honor's Club and Honor's Program
Imagen y Espiritu Ballet Folklorico de Cal Poly
Indian Students Association
Industrial and Manufacturing Engineering Department
Industrial Technology Society
Information Systems Association
Institute of Electric and Electronic Engineers



PARTICIPATING CLUBS...

Institute of Industrial Engineers
 Intercollegiate Forestry Activity
 Interfraternity Council
 Kappa Alpha Theta
 Kappa Chi
 Kappa Mu Epsilon
 Kappa Sigma
 Lambda Chi Alpha
 Lambda Phi Epsilon
 Lambda Theta Phi
 Landscape Industry Club
 Lanteen Festival
 Latinos in Agriculture
 Los Lecheros Dairy Club
 Lutheran Student Movement
 Masters of Business Administration Association
 Mat Pica Pi
 Materials Engineering Student Societies
 Math Club
 Minna No Anime
 Movimiento Estudiantil Xicano de Aztlan
 Mustang Band
 Mustang Maniacs
 National Association of Home Builders
 Newman Catholic Club
 noaCLUB
 Nu Alpha Kappa
 Nutrition Club
 Omega Xi Delta
 Persian Students of Cal Poly
 Phi Sigma Kappa
 Pilipino Cultural Exchange
 Political Science Club
 Poly Bernal
 Poly Christian Fellowship
 Poly Con
 Poly Escapes
 Poly Pack
 Polygoats
 Poultry Club
 Power Engineering Society
 Progressive Student Alliance
 Psi Chi Honor Society
 Recreation Administration Majors (RAM) Club
 Recycle Yourself - Organ Donor Awareness
 Roller Hockey
 Rotaract
 Sailing Club
 Sailing Team
 Sigma Alpha
 Sigma Kappa

Sigma Nu Fraternity
 Sigma Omega Nu
 SLO CORE Ultimate Frisbee
 Social Dance Club
 Social Science Club
 Society for Technical Communication
 Society of Automotive Engineers
 Society of Black Engineers and Scientists
 Society of Civil Engineers
 Society of Environmental Engineers
 Society of Hispanic Professional Engineers
 Society of Women Engineers
 Speech Communication Club
 Statistics Club
 Structural Engineers Association of California
 Student Chapter of American Society of Landscape Architecture
 Student Community Services
 Student World Assembly
 Students in Free Enterprise
 Studio Art Club
 Tau Beta Pi
 Tau Kappa Epsilon
 Team Eat the Meat
 Thai Students' Association
 The Wheelman
 Theta Chi Fraternity
 Tomodachi Kai
 Tri Beta Biological Honors Society
 Turf Club- GCSAA Student Chapter
 University Christian Community
 Vietnamese Student Association
 Vines to Wines
 Vineyard@Campus
 Wildlife Club
 Wind Orchestra
 WOW Team
 Zeta Chi Epsilon



6-INCH DAILY SPECIAL!

\$2.49



Monday
Savory Turkey
Breast & Ham

Tuesday
Meatball
Marinara

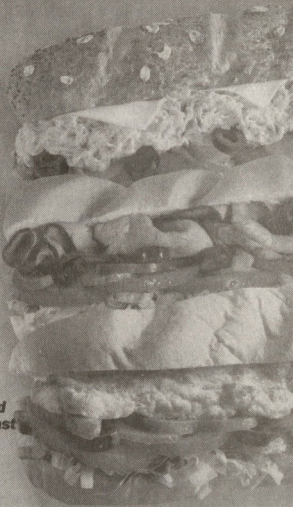
Wednesday
Savory Turkey
Breast

Thursday
Italian B.M.T.®

Friday
Classic Tuna

Saturday
Roast Beef

Sunday
Oven Roasted
Chicken Breast



Try Any Sub
fresh
TOASTED

**A DIFFERENT REGULAR
6-INCH SUB SPECIAL
EVERY DAY!**

SUBWAY
eat fresh.®

Offer valid at participating SUBWAY® restaurants for a limited time only. May not be combined with any other offers, promotions or discounts. Additional charge for FRESH VALUE MEAL® upsell. Double-meat, extra cheese, bacon and avocado extra. ©2005 Doctor's Associates Inc. SUBWAY® is a registered trademark of Doctor's Associates Inc.



SESLOC

FEDERAL CREDIT UNION

Your On-Campus Credit Union

As a Cal-Poly student, you're eligible to join SESLOC. That can mean a lifetime of financial advantages!

- ATM - \$5 withdrawals
- VISA check card
- Online account access
- Student loans
- VISA credit card
- Low rate car loans
- Free checking with no minimum balance
- \$1 overdraft fee for transfers from savings. No fee for line of credit overdraft

Located in the University Union, across from El Corral Bookstore.

805/543-1816 ♦ 805/227-1030

www.sesloc.org



Playing at the Palm Theatre:

leave it to chance

SHOWTIME: 6:45pm on Saturday, April 16th

The Palm Theatre is located at 817 Palm St.
in downtown San Luis Obispo



"Leave it to Chance" is a feature-length independent film written, directed and produced entirely by Cal Poly students. To learn more about the film, the filmmakers, and to view the trailer, visit www.leaveittochance.info

GUIDE TO CAL POLY UNDERGRADUATE COLLEGES AND MAJORS

COLLEGE OF AGRICULTURE

Agricultural Business
Agricultural Science
Agricultural Systems Management
Animal Science
BioResource and Agricultural Engineering
Crop Science
Dairy Science
Earth Sciences
Environmental Horticultural Science
Environmental Management and Protection
Food Science
Forestry and Natural Resources
Fruit Science
Nutrition
Plant Protection Science
Recreation, Parks & Tourism Administration
Soil Science
Wine and Viticulture

COLLEGE OF ARCHITECTURE AND ENVIRONMENTAL DESIGN

Architectural Engineering
Architecture
City and Regional Planning
Construction Management
Landscape Architecture

ORFALEA COLLEGE OF BUSINESS

Business Administration
Economics
Industrial Technology

COLLEGE OF ENGINEERING

Aerospace Engineering
Civil Engineering
Computer Science
Electrical Engineering
Environmental Engineering
General Engineering
Industrial Engineering
Manufacturing Engineering
Materials Engineering
Mechanical Engineering
Software Engineering

COLLEGE OF LIBERAL ARTS

Art and Design
Child Development
Communications Studies
(Speech Communication)
English
Graphic Communication
History
Journalism
Liberal Studies
Modern Languages and Literature
Music
Philosophy
Political Science
Psychology
Social Sciences
Theater Arts

COLLEGE OF SCIENCE AND MATHEMATICS

Biochemistry
Biological Sciences
Chemistry
Kinesiology
Mathematics
Microbiology
Physical Science
Physics
Statistics



CAL POLY OPEN HOUSE

WOULD LIKE TO THANK

THESE SPONSORS:

GOLD SPONSORS

American General Media
Associated Students Inc.
Campus Dining
Cellular One
Chela Financial Services
City of San Luis Obispo
El Corral Bookstore
Home Depot
Pepsi-Cola
Stenner Glen Apartments
Subway
Valencia Apartments

SILVER SPONSORS

Danny Sullivan and Stephanie Rothbauer
Laguna Village Merchants
SESLOC Financial Credit Union
Subway

BUSINESS AND WEB SPONSORS

Bon Temps Creole Café
Garden Street Inn
Pacifica Hotel Company

FRIENDS OF OPEN HOUSE

F. McLintocks
Fremont Theatre
Kayak Horizons

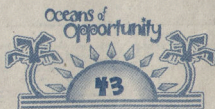
THE 2005 OPEN HOUSE COMMITTEE WOULD LIKE TO THANK:

Michelle Abba
Liz Adams
Anthony Aelits
Ag Ambassadors
Susan Albertson
Shelley Aleshire
Eileen Amaral
Rick Anderson
Cheryl Andrus
Kristin Ansari
President Warren J. Baker
Ken Barclay
Anya Bergman
Cindee Bennett-Thompson
Carolyn Biedinger
Bret Black
Blake Bolton
Michelle Broom
Dwayne Brummett
Cal Poly Admissions
Cal Poly Mustang Band
Cal Poly Parents' Program
Campus Dining and Catering
Josh Carroll
Kathryn Cole
Darren Connor
Diana Cozzi
Catherine Cramp
Alan Cushman

Kathy Daniels
Donna Davis
Will Deviny
Erika Diaz
Rojean Dominguez
Lorraine Donegan
Downtown Association
Joette Eisengart
Facilities Services
Leland Felsenthal
Brian French
Ann Fryer
Kim Gannon
Evann Gastaldo
Steve Godin
Steve Goldie
Lauren Groff
Polly Harrigan
Sandra Harris
Sgt. Lori Hashim
Teresa Hendrix
Ben Johnson
Dr. Rick Johnson
Carolyn Jones
Cindy Jones
Theresa Kaiser
Kim Kelly
Andrea Kerns
Jeanette Kimball

Jackie Krutzer
Denise Lazar
Gabrielle Lea
Deborah Linden
Jo Ann Lloyd
Manny Magana
Mora Massuda
Christin McBride
Leslie McKinley
Dr. Cornel Morton
Mustang Graphics
Holly Nelson
Nicky Nickelsen
Ellen Notermann
Lisa Nunes
Albert Nunez Jr.
Maryann O'Brien
Lynn Ogden
Nancy Osorio
Doug Overman
Sarah Pahlow
Christian Parrelra
Joy Pedersen
Dr. Mary Pederson
Kathleen Pennington
Charlene Petersen
Larry Ponting
POLY REPS
Dave Ragsdale

Susan Raines
Druci Reese
Ron Regier
Daniel Richter
Nicole Ripsom
Harriet Ross
Terry J. San Filippo
Monica Schechter
SCLC Committee
Debbie Scott
June Serjeant
Dave Smiley
Sheila Smith
Dr. William Spiller
Jill St. John
Rochelle Stallings
Patricia Stewart
Student Life & Leadership
Take It 5LO
Ben Thompson
Elizabeth Tuggle
University Graphic Systems
UU Building Services
Kim Uyttewall
Heidi Velasco
Dr. Scott Vernon
Week of Welcome Board
Week of Welcome Team
Peter Wilt
Carina Yamaguchi



Unlimited Minutes!

Call ANY Phone ANY Time

CellularOne's
UNLIMITED Local
Calling Plan

34⁹⁵
per month

- **UNLIMITED Long Distance**, \$3.95/mo.
- **Keep Your Current Number**
- **No Contract Required**



FREE
Phone*

cellularone-slo.com

(800) 549-4000

San Luis Obispo
733 Marsh Street
(at Garden)

Pismo Beach
513 Five Cities Drive
(by Scolari's)

Paso Robles
149 Niblick Road
(by Albertson's)

Offer Expires Soon!

CELLULARONE

*Limited time offer. SLO County residents only. Benefits available to digitally capable units not now subject to other plans. Qualified units will be billed \$34.95/month for an unlimited number of local calls placed or received when the unit is in SLO County. Additional charges apply when the unit is outside SLO County. \$3.95/month unlimited long distance applies to calls which originate in SLO County and terminate in the continental United States. Additional phones are \$19.95/month each and must be added to the same account. Free phone is factory refurbished. Activation fee is \$25 per phone. This promotion may not be combined with other promotions. Other terms and conditions are set forth in our customer service agreement.



Orchesis Dance Company

Auditions:

First Week of Fall Quarter

36th Annual Concert, 2006:

Jan 27, 28, 29, Feb 2, 3 and 4

For information visit:

<http://orchesis.calpoly.edu>

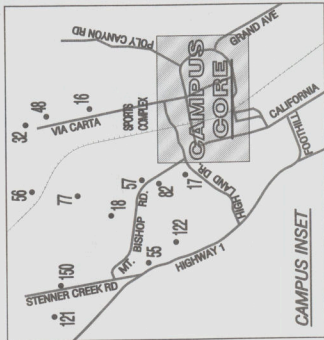
e-mail director Maria Junco at:

mjunco@calpoly.edu

NOTES

NOTES

NOTES



128



CAL POLY
WWW.CALPOLY.EDU
SAN LUIS OBISPO

CAMPUS CORE
JANUARY 2003

SYMBOL LEGEND:	
	Parking Lot
	General Parking
	Faculty/Staff
	Student/Visitor
	Motorcycle
	Disabled Access

Oceans of Opportunity

Cal Poly's 12th Annual

Open House

April 15-16, 2005

April
14 Take a
Swim!

Club Preview Night

Meet Cal Poly clubs in
Downtown San Luis
Obispo at the weekly
Farmer's Market.

April
15 Dive on In!

Admitted Students' Preview Day

Get acquainted with your
department and meet
your future teachers and
classmates.

April
16 Make a
Splash!

Open to the Public

Activities for everyone!
Events include: Rodeo, Poly
Royal Parade, Open House
Concert, Tractor Pull, Ballet
Folklorico and MORE!



ADMITTED STUDENT'S DAY

CAL POLY OPEN HOUSE

Valid Only On Friday, April 15, 2005

In Posted Areas.

Not Valid In Disabled Zones Or

In Meter Unless The Appropriate

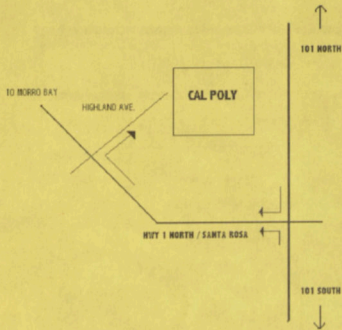
DMV Placard is Displayed.



PARKING PERMIT

Friday, April 15, 2005

**MUST DISPLAY ON
DASH
THIS SIDE UP**



Traveling North on Route 101 to San Luis Obispo:

- Traveling through San Luis Obispo, take the Highway 1 North exit
- Turn right onto Highway 1 / Santa Rosa Street
- Turn right onto Highland Drive - follow the Open House parking area signs

Traveling South on Route 101 to San Luis Obispo:

- Approaching San Luis Obispo, take Santa Rosa Street exit
- Turn left at the stoplight and travel North on Santa Rosa Street / Highway 1
- Turn right onto Highland Drive - follow the Open House parking area signs

Traveling South on Highway 1:

(from Monterey via Scenic Route 1, The Pacific Coast Highway)

- Approaching San Luis Obispo, the first stop light on the edge of town is Highland Drive
- Turn left onto Highland Drive - follow the Open House parking area signs

Open House Featured Events

Cal Poly Rodeo

Join the Rodeo Club in celebration of our western heritage at the 65th annual Poly Royal Rodeo. Top college athletes from the western United States will be competing in nonstop intercollegiate rodeo action Friday, Saturday, and Sunday. Tickets are available at the Cal Poly Ticket Office and at the Rodeo Arena.

Ballet Folklorico Dance Performance

Experience the richness and beauty of the Mexican culture. Enjoy an evening filled with the colorful costumes and invigorating sounds of traditional Mexican dance and music. Tickets may be purchased at the Performing Arts Ticket Office.

Music Department's Open House Concert

The Music Department celebrates Open House by featuring: the Cal Poly Symphony, Wind Orchestra, University Jazz Band and the Choirs. Local patrons and out-of-town visitors are invited to enjoy an evening of entertainment and variety. Ample parking is available! Tickets may be purchased at the Performing Arts Ticket Office.

Truck and Tractor Pull

Showcasing equipment designed and built by students, money raised will benefit the scholarship account used for BRAE and Ag students. Tickets are available Friday and Saturday in Building 08, BRAE Department, and at the gate Saturday at noon.

Friday Nite Invite: The Ocean Commotion!

Friday, April 15, 2005
8:00pm-11:00pm
University Union

live bands-food-bowling-prizes-and More!

Find out about Open House

Check out the web site:

<http://orientation.calpoly.edu/openhouse>

For recorded event information:

805.756.CPOH (2764) Open House Hotline

Drop us a line:

open-house@calpoly.edu



Directions to Campus

Traveling North on Route 101 to San Luis Obispo:

- Traveling through San Luis Obispo, take the Highway 1 North exit
- Turn right onto Highway 1/Santa Rosa St.
- Turn right onto Highland Drive
- Follow the Open House parking area signs

Traveling South on Route 101 to San Luis Obispo:

- Approaching San Luis Obispo, take Santa Rosa St. exit
- Turn left at the stoplight and travel north on Santa Rosa St./Highway 1
- Turn right onto Highland Drive
- Follow the Open House parking area signs

Parking Information

For Open House parking on Friday April 15, please use the directions above and enter the campus on Highland Drive. Shuttles from the parking area to the campus core are available.

Designed by Jessica H. Greenwalt

**Oceans of
Opportunity**
Cal Poly's 12th Annual
Open House

April

Admitted Students' Preview Day

15 Dive on In!

April

Open to the Public

**16 Make a
Splash!**



April 15 Dive on In!

Admitted Students' Preview Day

What is Open House?

Open House strives to showcase the excellence of Cal Poly and the immediate San Luis Obispo community. The event encompasses two days of activities; each day having a specific focus. Friday's activities include visits with academic representatives, the Resource Faire, Friday Nite Invite and WOW's Parent's Coffee House! The fun continues on Saturday with the Poly Royal Parade, Opening Ceremonies and an exciting club booth and activity area with over 200 clubs participating. Please join us and experience all Cal Poly offers!

Contact your department

For questions concerning events in your individual college and major, please refer to the following numbers:

College of Agriculture	805.756.2161
College of Architecture and Environmental Design	805.756.1311
Orfalea College of Business	805.756.2705
College of Engineering	805.756.2853
College of Liberal Arts	805.756.6786
College of Science and Mathematics	805.756.2226

Oceans of Opportunity

Cal Poly's 12th Annual
Open House

Friday, April 15

Cal Poly's Admitted Students' Preview Day is a great way to get to know the Cal Poly campus. Students and their supporters will have a chance to hear from President Baker, visit with college deans, faculty and current students, discover the many resources available and take tours of the campus.

7:30am-12noon

Admitted Students' Check-In

Mott Lawn

8am-3pm

Campus Resource Faire

University Union Plaza

8:30am-9am

University Welcome I

Recreation Center

College of Agriculture

College of Engineering

College of Architecture

and Environmental Design

9am-2pm

Campus Tours

UU Plaza Stage

9am-4pm

College & Department Presentations

Contact College for more information

11am-11:30am

University Welcome II

Recreation Center

Orfalea College of Business

College of Liberal Arts

College of Science

and Mathematics

2:30pm

Cal Poly Rodeo

Rodeo Grounds

8pm-11pm

Friday Nite Invite: The Ocean Commotion!

University Union

Parents' Coffeehouse

Sponsored by Week of Welcome

The Avenue

April 16 Make a Splash!

Open to the Public

Saturday, April 16

Saturday's Cal Poly Showcase is open to the public. Events include the Poly Royal Parade, Tractor Pull, Rodeo, Ballet Folklorico and Open House Concert, as well as demonstrations and concession booths by over 200 campus groups.

9am

Poly Royal Parade

Perimeter Road

10am

Opening Ceremonies

Dexter Lawn Mainstage

10:30am-4pm

Club Displays

Main Stage Events

Open House Carnival

11am-2pm

Campus Tours

Dexter Lawn

1pm

Cal Poly Tractor Pull

5pm

Cal Poly Rodeo

Rodeo Grounds

7pm

Ballet Folklorico

Cal Poly Theater

8pm

Music Department's Open House Concert

Christopher Cohan

Center