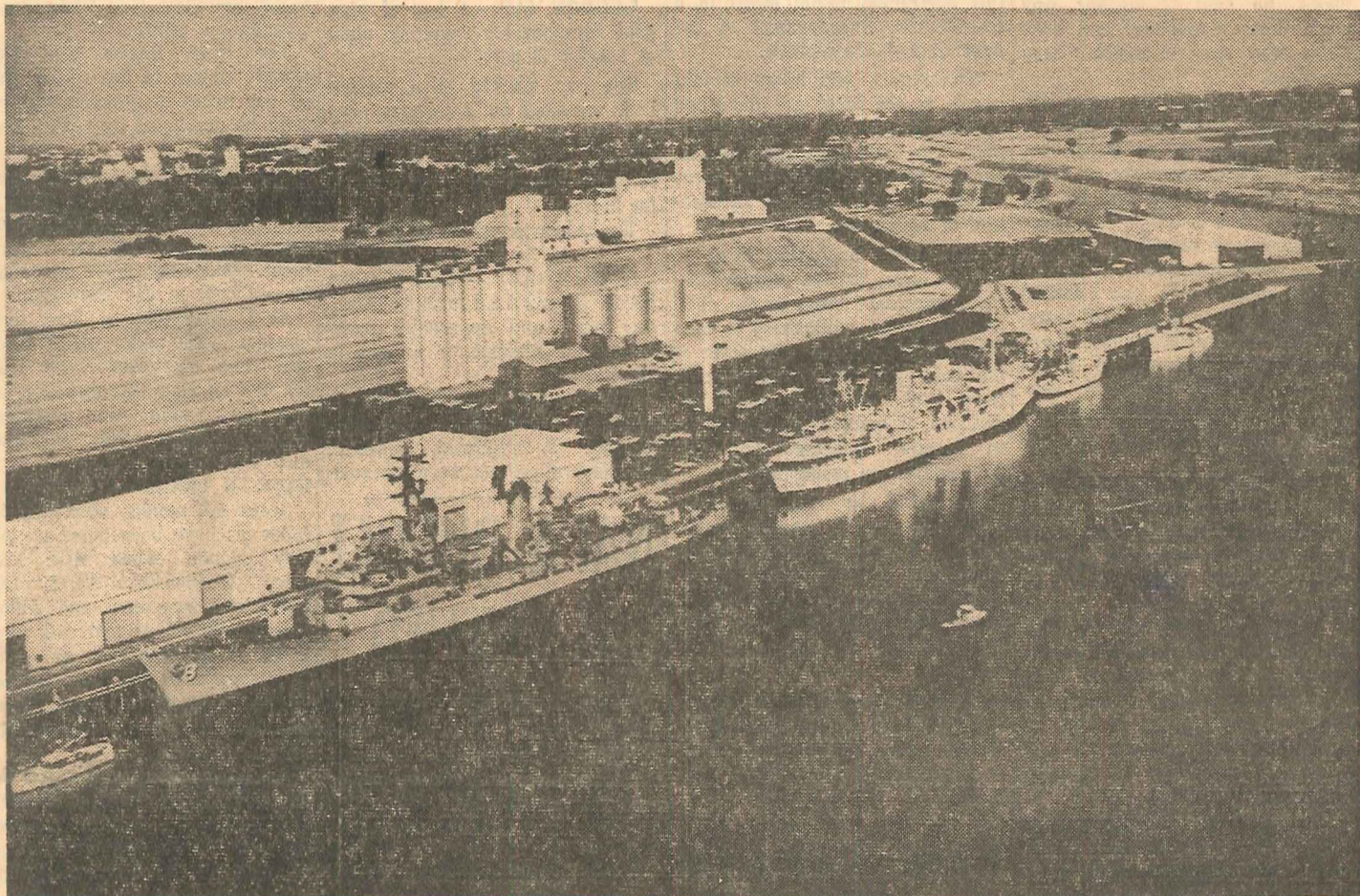


THE NEWS CHRONICLE

EVENING

96th YEAR VALLEJO, CALIFORNIA—FRIDAY, JULY 19, 1963 10c NO. 14



A number of ocean-going ships were moored in Sacramento today for the dedication of California's newest port—90 miles from the sea. In the foreground is the guided missile destroyer USS Lynde McCormick and the California Maritime Academy's training ship, Golden Bear. Many state and national dignitaries at-

tended the dedication ceremonies at noon today as Sacramento's dreams of becoming a port city finally came true. The city hopes to attract some of the commerce from other inland ports such as Stockton.—AP Wirephoto.

CAPITAL OPENS CHANNEL PORT

SACRAMENTO (UPI)—This interior city was in the midst of celebrating its birth as a port for ocean-going vessels today.

Secretary of Interior Stewart L. Udall was the principal speaker at a dedication program that featured six of the ocean-going ships, among the first to use the deep water channel from San Francisco Bay to the Sacramento-Yolo port.

Gov. Edmund G. Brown called upon an "intense, statewide, industrywide campaign" to "create the trade to keep this port busy. . ."

Among those congratulating local officials on the completion of the long-sought port was Mayor George Christopher of San Francisco, where port officials have looked askance at the project.

"The fulfillment of your 50-year dream to join Sacramento with the sea is a proud achievement and I wish you well in this great new enterprise," Christopher said.

The city was welcoming the unfamiliar site of small groups of white-uniformed sailors on shore leave from the guided missile destroyer Lynde McCormick, destroyer Laws, and the minesweeper Thrasher. Also in port were the California Maritime Academy's Golden Bear, the Coast Guard's Comanche, and the tuna clipper Mary Barbara.

The celebration got underway yesterday when a six-horse wagon freighter picked up a load of cargo at the port and headed for Placerville, where an annual pioneer celebration is scheduled for this week-end.

The first ship to pick up cargo at port was the Taipeh Victory, a Nationalist Chinese vessel which loaded rice for Okinawa in a preliminary visit three weeks ago.