



LBI



JEFFERSON ★ JACKSON DAY DINNER

honoring

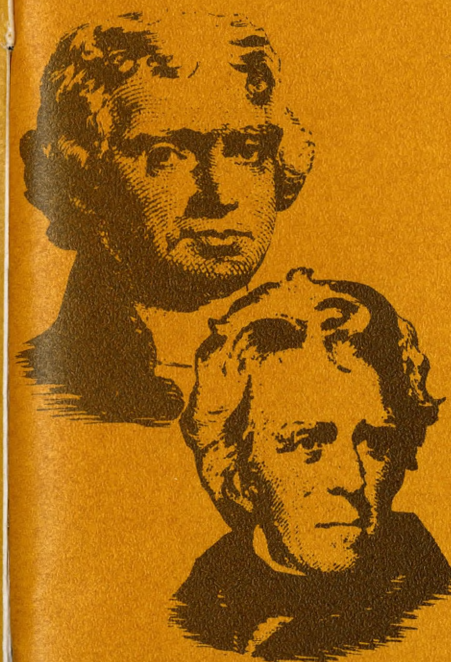
Lyndon B. Johnson

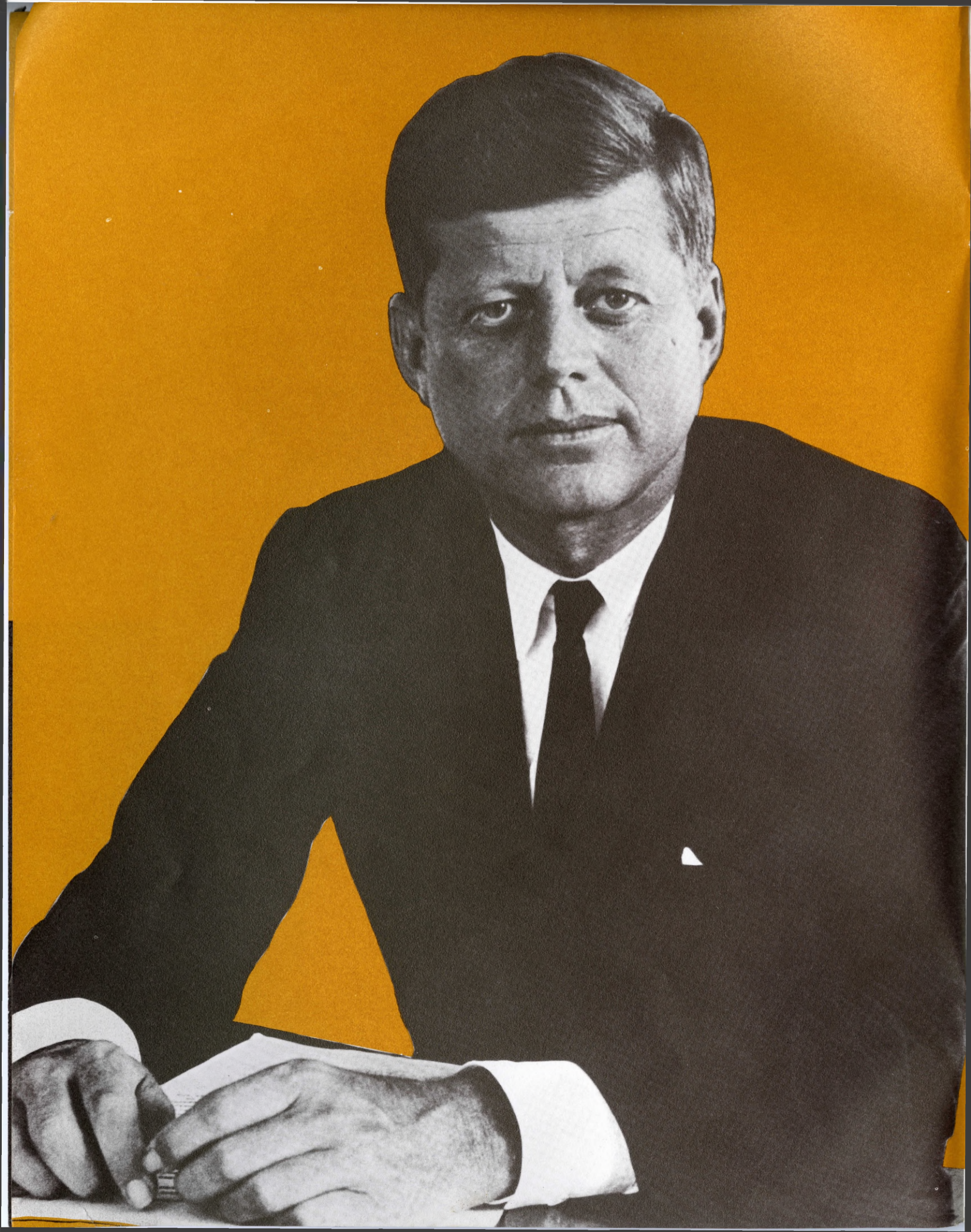
VICE PRESIDENT OF THE UNITED STATES

International Ballroom / Beverly Hilton Hotel / Beverly Hills, California

Thursday, November Fourteenth / Nineteen Hundred Sixty-three

SPONSORED BY DEMOCRATIC STATE CENTRAL COMMITTEE OF CALIFORNIA • EUGENE L. WYMAN, CHAIRMAN





THE WHITE HOUSE
WASHINGTON

Mr. Eugene L. Wyman, Chairman
Democratic State Central Committee of California
417 South Hill Street
Los Angeles, California

Dear Gene:

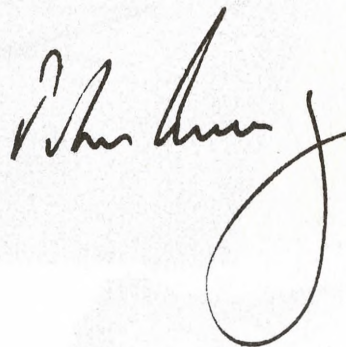
It is a pleasure to send my greetings to all of you attending your great dinner in Southern California.

The Southern California Democratic delegation is a pillar of strength for our Party's program in the Congress. In fact, we could do with a few more Democrats from your area in the Congress, and if this were not a completely serious message, I might mention a few Republicans from your area who would never be missed in Congress -- at least, not by me or the Vice President who is your guest of honor. I must also tell you that we miss the wisdom and leadership of Clair Engle and that we are praying for his rapid recovery.

I am delighted that you will have the pleasure of hearing from Lyndon Johnson, who will express the appreciation of the Administration for your great contributions to the Party and for your accomplishments in California.

I can assure you that there is close and successful teamwork between the Federal Government and the vigorous and progressive California Administration of Pat Brown. All of you worked hard to help Pat and the state ticket win a resounding victory in his race for re-election in 1962.

Good luck and best wishes to all of you in the year ahead.

A handwritten signature in dark ink, appearing to read "Lyndon B. Johnson", with a large, stylized flourish at the end.



It is with both pride and gladness that we Democrats once again welcome to California the Vice President of the United States, Lyndon B. Johnson.

Lyndon Johnson comes to us not only as a national and international statesman but as a friend with the memories of previous visits still warm in our hearts. No Democrat who was present will ever forget his rousing speech in Sacramento just a few short months ago just as no Californian who heard him will ever forget his campaign swing through our state in the closing weeks of the 1960 campaign.

Both occasions were exuberant, vital, confident — like the Democratic Party itself.

The story of Lyndon Johnson is very much like the history of the modern Democratic Party, beginning with the New Deal in 1933.

That was the year that a lean, intense, young Texan came to Washington to take a job as a Congressional Secretary and to launch one of the most remarkable careers of the past three decades.

Those were blood tingling times — Franklin D. Roosevelt challenging the forces of national adversity with the bold "we have nothing to fear but fear itself"; NRA, TVA, CCC, WPA, PWA, AAA; the stirring sweep of the "100 days." It was in this atmosphere that Lyndon Johnson learned the lessons of government and statesmanship that he himself was to apply as a national leader in the years ahead.

The intervening years have been crowded with achievement. They have included: state director of the National Youth Administration; Congressman; Senator; Assistant Senate Democratic leader; Senate Democratic leader (the youngest in history); and now Vice President. The country witnessed Lyndon Johnson demonstrate that it was possible, desirable, and honorable to be both "responsible" and "opposition." And finally, America discovered how much could be done by a Vice President working in close harmony with a President who was determined to use the full potential of his partner.

Shortly after the Kennedy-Johnson team was nominated here in Los Angeles, John F. Kennedy stated that if elected, Lyndon Johnson would be placed in a position to become the most effective Vice President of modern times. The voters elected the team and the promise was not idle.

As head of the President's Committee on Equal Employment Opportunity, Lyndon Johnson has headed the most effective program ever launched to combat job discrimination because of race, creed or color — a program that covers more than 20,000,000 workers.

As head of the President's Space and Aeronautics Council, Lyndon Johnson has helped to draw up the programs that have placed our astronauts in the heavens.

As personal representative of the President, Lyndon Johnson has travelled to more than 30 other nations, clear around the world, carrying America's message of freedom and is universally recognized as an ambassador of good will.

As a national leader, Lyndon Johnson has been an eloquent and persuasive spokesman for the great causes of our times — civil rights, economic vitality, national strength and national responsibility.

This is the kind of man who will be with us tonight. As Democrats (the late Sam Rayburn liked to say "without prefix, without suffix, without apology") this is a proud occasion for all of us. We are here to show the people of our state why we are so proud of our party and we can put our best foot forward.

Because of men like Lyndon Johnson, we face the future confident and unafraid. The team of John F. Kennedy and Lyndon Johnson which won in 1960 is the team that will sweep the nation in 1964. And as far as California is concerned, it will be J.F.K. and L.B.J. — all the way.

CALIFORNIA CONSTITUTIONAL OFFICERS

Hon. Edmund G. Brown, *Governor*

Hon. Glenn M. Anderson, *Lieutenant Governor*

Hon. Stanley Mosk, *Attorney General*

Hon. Bert A. Betts, *Treasurer*

Hon. Alan Cranston, *Controller*

Hon. Richard Nevins, *Member Board of Equalization*

DEMOCRATIC
PARTY
of
CALIFORNIA

DEMOCRATIC PUBLIC OFFICIALS ★ ★

UNITED STATES SENATOR: Hon. Clair Engle

MEMBERS OF CONGRESS, SOUTH: Hon. George E. Brown, Jr. ■ Hon. Everett Burkhalter
■ Hon. Ronald Brooks Cameron ■ Hon. James Corman ■ Hon. Richard T. Hanna ■
Hon. Augustus F. Hawkins ■ Hon. Chet Holifield ■ Hon. Cecil R. King ■ Hon. James Roosevelt
■ Hon. Edward R. Roybal ■ Hon. Harry R. Sheppard ■ Hon. Charles H. Wilson ■ Hon. Lionel Van Deerlin ■

MEMBERS OF THE CALIFORNIA SENATE, SOUTH:

Hon. Eugene V. Nisbet ■ Hon. Aaron Quick ■ Hon. Thomas M. Rees ■ Hon. Alvin Weingand

MEMBERS OF THE CALIFORNIA ASSEMBLY, SOUTH: Hon. Jesse M. Unruh, Speaker ■ Hon. Don A. Allen, Sr. ■
Hon. Tom Bane ■ Hon. Anthony C. Beilenson ■ Hon. Tom C. Carrell ■ Hon. George E. Danielson
■ Hon. William E. Dannemeyer ■ Hon. Clayton A. Dills ■ Hon. Mervyn M. Dymally ■ Hon. Edward E. Elliott ■
Hon. F. Douglas Ferrell ■ Hon. Joe A. Gonsalves ■ Hon. Burt Henson ■ Hon. Harvey Johnson
■ Hon. Joseph M. Kennick ■ Hon. Lester A. McMillan ■ Hon. James R. Mills ■ Hon. John Moreno ■
Hon. Carley V. Porter ■ Hon. John P. Quimby ■ Hon. Alfred H. Song ■ Hon. Philip L. Soto
■ Hon. Vincent Thomas ■ Hon. Tom Waite ■ Hon. Charles Warren ■ Hon. George A. Willson ■

DEMOCRATIC NATIONAL COMMITTEE
OF CALIFORNIA

Honorable Stanley Mosk,
National Committeeman

Honorable Elizabeth R. Gatov,
National Committeewoman

DEMOCRATIC
PARTY
of
CALIFORNIA

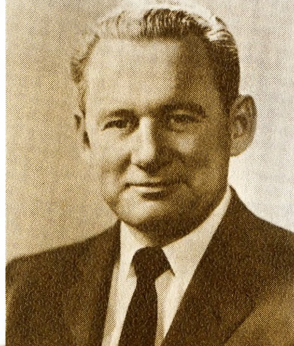
DEMOCRATIC PARTY OF CALIFORNIA

DEMOCRATIC STATE CENTRAL COMMITTEE OF CALIFORNIA, SOUTH: *State Chairman:* Eugene L. Wyman

■ *Secretary:* Trudy Owens ■ *Vice-Chairman, South:* Diane McGinness ■ *Women's Chairman, South:* Carmen H. Warschaw
■ *Treasurer, South:* Hon. Tom C. Carrell ■

EXECUTIVE COMMITTEE, SOUTH: Ruth Alexander ■ Hon. Tom Bane ■ Kay Barr ■ Marion D. Bird ■
James Browning ■ Richard Cartwright ■ Tom Carvey ■ Morrie J. Collins ■ James C. Cook ■ Pearl Curley
■ Gladys Danielson ■ Phil Dreyer ■ Olga Dunbar ■ Hon. Mervyn Dymally ■ Hon. Edward Elliott ■
James C. Findley ■ Maxanna Freie ■ Lawrence Grossman ■ Fred Harber ■ Ann Huonker
■ Mary Catherine Jurado ■ Naida Katz ■ John Kearney ■ Harold Lane ■ Melvin Lennard ■
Esther Lindstrom ■ Lillian Martin ■ Donald L. McGrew ■ Norman J. Meyer ■ Hon. James Mills
■ William C. Moeser ■ Estelle Mooney ■ Ethel Narvid ■ Mary Lois Nevins ■ Toby Osos
I. L. "Pete" Peterman ■ Eugene Radding ■ Harry E. Reynolds ■ Manny Rohatiner ■ E. C. Rutherford
■ Roz Segal ■ Arthur Seltzer ■ Betty Jean Sentner ■ Edith Seros ■ Winfield A. Shoemaker ■
James H. Simmons ■ Elizabeth Snyder ■ Hon. Alfred Song ■ Lionel Steinberg ■ Hazel Tow
■ Madale Watson ■ Bryce Wisner ■ William J. Wright ■ Rae Wyman ■

Governor
Edmund G. Brown
Honorary Chairman



Eugene L.
Wyman
Chairman

Lloyd N.
Hand
Finance
Chairman

Mark Boyar
Co-Chairman

Robert W.
Prescott
Co-Chairman

Joseph L.
Alpersen
Vice
Chairman

Milton
Feinerman
Vice
Chairman

Samuel
Hurwitz
Vice
Chairman

Eugene V.
Klein
Vice
Chairman

Jacques
Leslie
Vice
Chairman

Jackson R.
McGowen
Vice
Chairman

William L.
Mitchell
Vice
Chairman

Edwin W.
Pauley
Vice
Chairman

J. Manning
Post
Treasurer

Pete Summers
Vice
Chairman

United States Senator
Clair Engle
Honorary Co-chairman



DEMOCRATIC
STATE CENTRAL
COMMITTEE
of
CALIFORNIA

DINNER COMMITTEE

James Allen ■ Jack Arian ■ Arthur Ayers ■ Louis Baker ■ Gordon Baskin ■ Robert Bell ■ Joseph Benaron ■ Joseph Bolker ■ Robert Brunson ■ R. A. Burgin ■ Stanley Caiden ■ O. Richard Capen ■ Victor Carter ■ Joseph R. Cerrell ■ Mrs. Elizabeth Chevalier ■ Worrell J. Collier ■ Dorman Commons ■ Zel Conn ■ Robert O. Cooley ■ William Crawford ■ Theodore Cummings ■ Neil J. Curry ■ Milton Feinerman ■ Robert J. Felixson ■ Charles Ferguson ■ John Ferraro ■ Paul Fisher ■ Ludlow Flower, Jr. ■ Robert Franklyn, M.D. ■ Samuel K. Freshman ■ Leon Furra ■ S. Louis Gaines ■ Louis J. Galen ■ Charles Gant ■ Jack Garden ■ Albert Gersten ■ Stanley Gewirtz ■ George T. Goggin ■ Lee J. Goldin ■ Bram Goldsmith ■ Saul Grayson ■ Irving Green ■ Joseph Grillo ■ Harry Groman ■ Mortimer W. Hall ■ Lawrence Harvey ■ A. Andrew Hauk ■ Fred J. Hayman ■ Joe Herman ■ J. Bart Hutchins ■ Warner Heineman ■ Irvin J. Kahn ■ Richard Keatinge ■ Martin Kellner ■ Jerrold Kessler ■ Dan A. Kimball ■ S. Jon Kreedman ■ Walter Leftwich ■ Jacques Leslie ■ John Luhring ■ Bart Lytton ■ John MacFaden ■ Hal Marlowe ■ Robert J. Mason ■ Fred McCanlies ■ Douglas McDonald ■ Sherwin Memel ■ David Miller ■ Milton Natapoff ■ Ben Narvid ■ Martin Nishkian ■ Sam Oschin ■ Connolly Oyler ■ Gifford Phillips ■ Martin Pollard ■ Dick Ports ■ Barbara Rosien ■ Robert Ross ■ Nicholas Shammass ■ Leonard Shane ■ Earl L. Sherman ■ Robert Six ■ Jamie H. Smith ■ Brett Smithers ■ Stanley Stalford ■ Barry Sterling ■ Lionel Steinberg ■ Robert J. Stoller, M.D. ■ Frank Sullivan ■ Dominic Tavaglione ■ George Thatcher ■ Leroy Tidwell ■ Lek Von Kaesborg ■ Louis Warschaw ■ Lew Wasserman ■ Lawrence Weinberg ■ Joseph Weissman ■ Dr. E. Parl Welch ■ A. Alan Witlin, M.D. ■ Leonard Wolf ■ Herbert J. Young.



MENU

Escoffier Salad Louie

Prime Ribs of "Blue Ribbon" Beef
Champs Elysees Potatoes
Tiny Stringbeans Sautes Amandine

Bombe Cuppucino
Hot Chocolate Fudge Sauce

Coffee



PROGRAM

Dinner Chairman	Eugene L. Wyman Democratic State Chairman
Pledge of Allegiance	Rudy Hernandez Awarded Congressional Medal of Honor 1951
Invocation	Reverend Richard A. Busch All Saints Episcopal Church
Introductions	Honorable Jesse M. Unruh Speaker, California State Assembly
Greetings	Honorable James Roosevelt Member of Congress
Introduction	Honorable Edmund G. Brown Governor, State of California
Address	Honorable Lyndon Baines Johnson Vice President of the United States
Entertainment	Joey Bishop, Master of Ceremonies Nick Adams James Garner June Hutton Janet Leigh Barbara Rush Special Lyrics by Sammy Cahn Produced by Ruth Berle and Rosalind W. Wyman Jerry Rosen and his Orchestra Special Music by the Monseigneur Violinists
Benediction	Rabbi Jacob Pressman Temple Beth Am

BEST WISHES!

KONA KAI CLUB
KONA INN
VOYAGER RESTAURANT

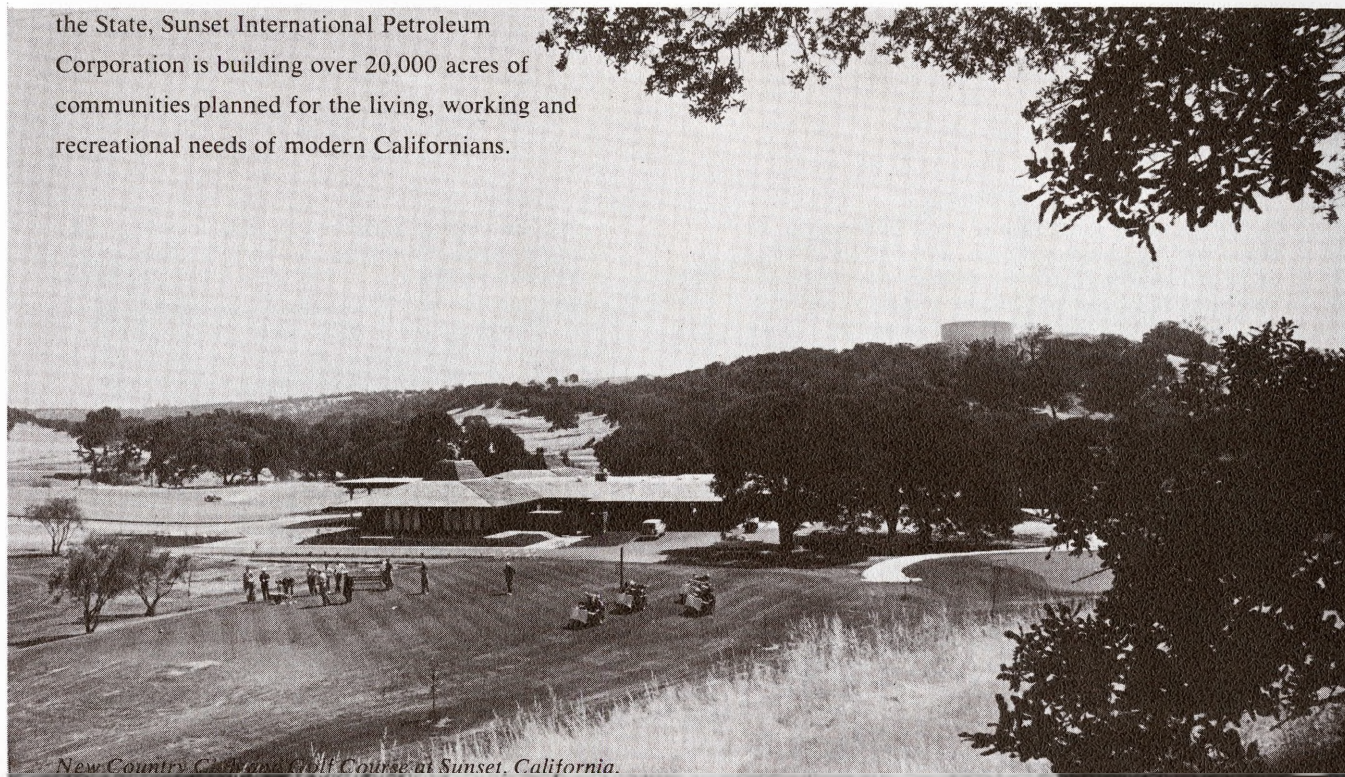
Shelter Island, San Diego

ALESSIO CORPORATION

JOHN S. ALESSIO, Chairman of the Board

Building a way of Life for Californians...

In Los Angeles, San Diego, The Bay Area, Sacramento . . . In all the dynamic growth centers of the State, Sunset International Petroleum Corporation is building over 20,000 acres of communities planned for the living, working and recreational needs of modern Californians.



New Country Club and Golf Course at Sunset, California.

SUNSET INTERNATIONAL PETROLEUM CORPORATION

DIVISIONS: Oil and Gas Production
Los Angeles, California
Real Estate
La Jolla, California

PROJECTS: Sunset Hills, North Whittier Heights
Sunset, Near Sacramento
San Marin, Near San Francisco
San Carlos, San Diego
High Rise Developments in San Francisco and Los Angeles

J. D. Sterling, Chairman
Morton A. Sterling, President

Computers by General Precision

Built in California

In use throughout the nation

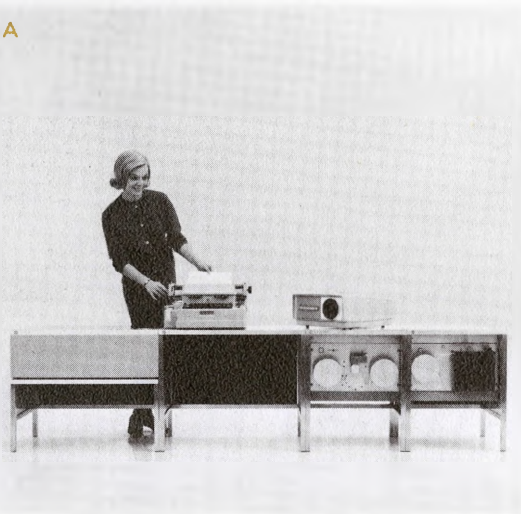
To assure ready availability of important reports, an Ohio highway contractor uses an LGP*21(A) electronic computer. □ To obtain detailed cost and profit figures quickly and economically, owners of a Florida trucking firm use an LGP-30*(B) computer. □ To teach the basics of computer operation to electrical engineering students at a large midwestern university, instructors use an RPC*4000 computer. □ Built by the Commercial Computer Division of General Precision's Information Systems Group (ISG), these com-

puters are helping users in business, industry, and education solve challenging problems. Similarly, computers built by ISG's Librascope Division meet U.S. defense establishment needs. Send for illustrated brochure describing complete range of ISG's capabilities.

**GENERAL
PRECISION**

INFORMATION SYSTEMS GROUP
808 Western Avenue, Glendale 1, California

A



Sunnyvale

B



Burbank

Van Nuys

Glendale

San Marcos



Let your money make money for you at **WESTDALE SAVINGS**
and LOAN ASSOCIATION

Whether you visit us to save in person or use our convenient save by mail (We pay postage both ways) you will always receive the highest prevailing rate of interest from the day funds are received (when held through the quarter).

Your savings are insured by an agency of the Federal Government.

WESTDALE
 **SAVINGS** 
AND LOAN ASSOCIATION

2920 S. Sepulveda (at National) L.A. 64, Calif. GRanite 7-1551 or BRadshaw 2-2701



WELCOME TO CALIFORNIA CITY

California's Largest Planned Community

California City is planned for people. A city of lovely homes moderately priced... new business opportunities... recreational facilities... all in the heart of the north Antelope Valley! Approximately 12 miles from Edwards Air Force Base... and less than 2 hours from Los Angeles. You owe it to yourself and your family to see California City today!

FOR MORE DETAILED INFORMATION, FILL OUT COUPON BELOW.

CALIFORNIA CITY DEVELOPMENT CO.
P. O. Box 123
California City, California

Name _____

Address _____

City _____ State _____

Phone _____

Like California itself... California City is BIG... big in size... big in scope... big in water resources. Here you'll find 82,000 acres of land geared to the development of a great city... a Master-Planned city designed to eliminate "urban clutter."

Lots and homesites 6,000 to 10,000 square feet in size... more than 200 miles of paved streets and roads now exist... school sites are strategically located... ideally-situated recreational areas make leisure-living a way of life... power, water, telephone utilities assure you basic home needs...

AND NOW—FHA HOME LOANS ARE AVAILABLE
IN CALIFORNIA CITY!

See fabulous Central Park, home of the world's largest artificially-lined lake; sprawling 18-hole 3-par night-lighted golf course; driving range; boat marina; fishing facilities; shuffleboard, tennis and volleyball courts; children's playground; baseball fields; picnic grounds and the "Top of the Park"... a magnificent cascading waterfall spilling into Central Park Lake!

Truly all you can ask for in California... truly yours in CALIFORNIA CITY!

CALIFORNIA CITY

BEST
WISHES
FROM

HAL
MARLOWE
ASSOCIATES



*Consultants For
Public-Governmental Relations
and Business Development*

OFFICES IN
LOS ANGELES AND
WASHINGTON, D.C.

HAROLD C. MARLOWE,
President

RICHARD C. KING,
Executive Vice President



COMPLIMENTS OF SEVEN UP BOTTLING CO. OF LOS ANGELES, INC.



*We are honored to join
in the salute to*

VICE PRESIDENT LYNDON B. JOHNSON

*...who has worked so effectively, in both the
executive and legislative branches of government,
for the progress and prosperity of our Nation,
and for peace in the World.*



**GIBRALTAR
SAVINGS**

AND LOAN ASSOCIATION

HERBERT J. YOUNG, *President*

HAROLD J. SHIELDS, *Executive Vice President*



PENWICK MARKET COMPANY

8347 Beverly Boulevard

Los Angeles 48, California

OL 3-5811

The Finest Wines and Liquors from All the World

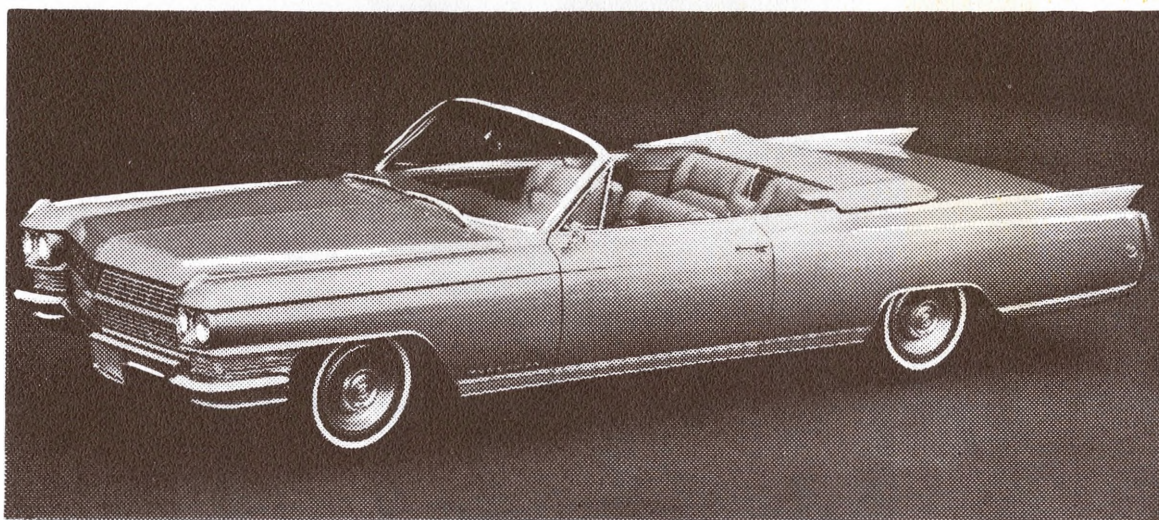
All Wines Temperature Controlled

Management: MR. SAMUEL GREENFIELD

NOW... *Cadillac*

FOR 1964

MORE TEMPTING THAN EVER!



1964 CADILLAC FLEETWOOD ELDORADO CONVERTIBLE

After 42 years as a new car dealer, Martin Pollard, president of Casa de Cadillac is happy to present the finest automobile ever made . . . Cadillac for 1964. 100 ways new, there are eleven new models to choose from—the most automobile for the investment of all time! Be among the first to visit Casa de Cadillac. See the car that's a revelation to behold, an inspiration to ride in . . . just wait till you drive it! Casa de Cadillac as always offers the Cadillac buyer a complete service department, together with a guarantee that really means something. Come in soon, see and drive the most powerful, yet smooth Cadillac in history . . . and remember, we take care of our own.



MARTIN POLLARD'S

Casa de Cadillac

14401 Ventura Blvd.
784-9901

Sherman Oaks
873-1430

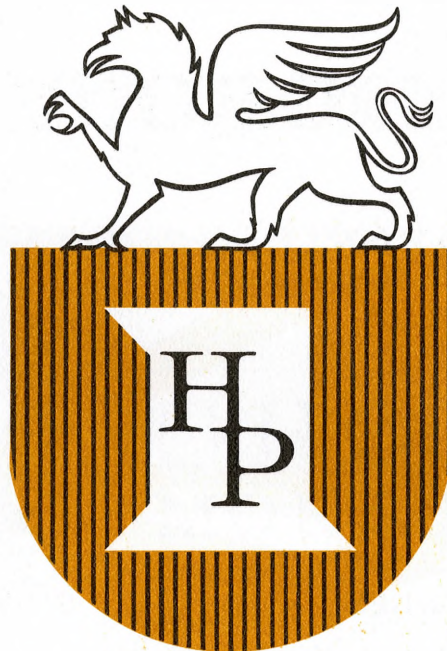
*A Complete Automotive Service for all
Valley Motorists*

The Best Service



Direct Mail Advertising

THREE FRIENDLY CONVENIENT
OFFICES TO SERVE YOU



HUNTINGTON PARK
FIRST
SAVINGS
& LOAN ASSOCIATION



SOUTH GATE



HUNTINGTON PARK



BELL-MAYWOOD



HUNTINGTON PARK: 2650 Zoe at Rita—LUdlow 3-1541
SOUTH GATE: 4240 Tweedy Blvd.—LOrain 4-4551
BELL-MAYWOOD: 6250 Atlantic Blvd.—LUdlow 1-6151



LARWIN

GROUP

COMPANIES



PLANNED COMMUNITIES



SHOPPING CENTERS

COMMERCIAL BUILDINGS



LAND DEVELOPMENTS

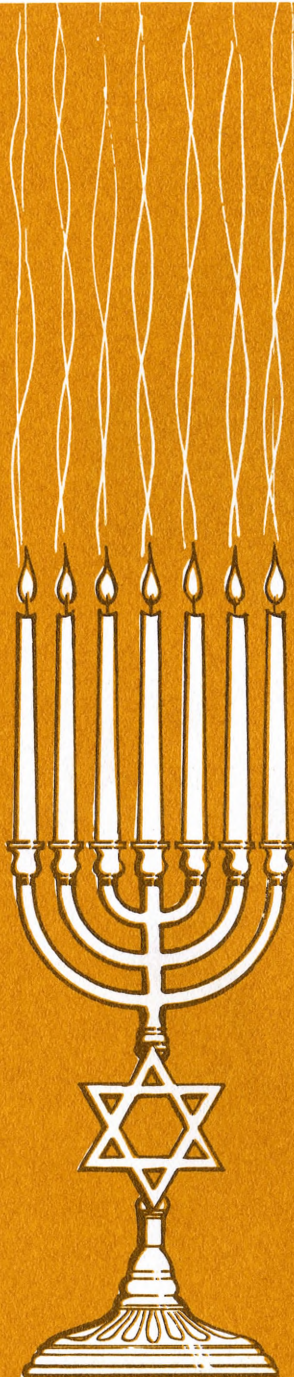
■ INDUSTRIAL DEVELOPMENTS ■



LARRY WEINBERG

BILL WEINBERG

LEE GOLDIN



More Jewish Families Select

GROMAN MORTUARIES

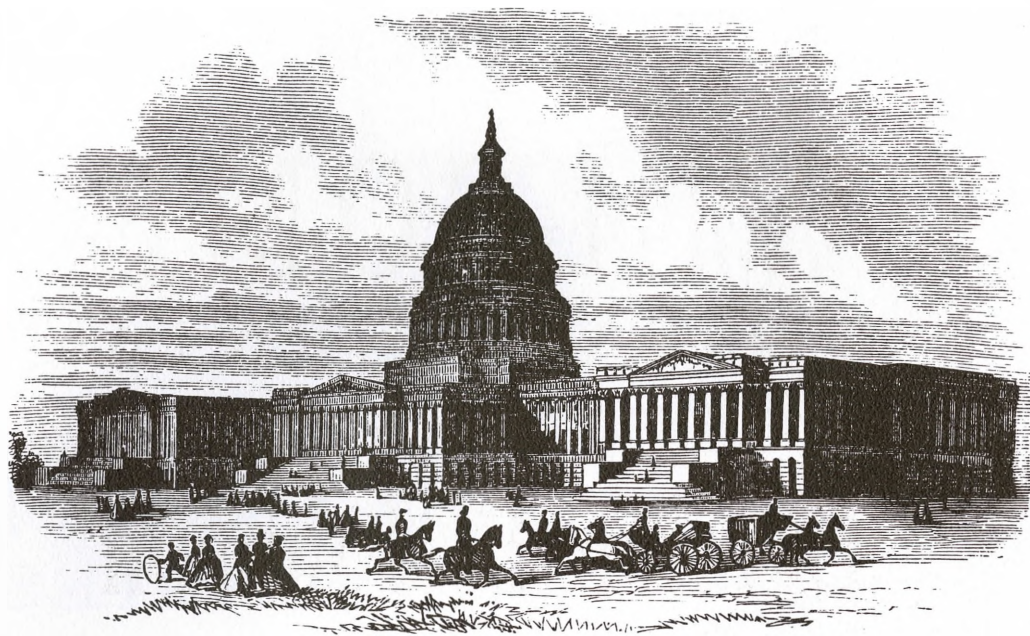
HARRY GROMAN, President

TWO LOCATIONS

830 W. WASHINGTON BLVD., LOS ANGELES
RI. 8-2201

11500 SEPULVEDA BLVD., SAN FERNANDO VALLEY
TR. 7-0335

*One phone call for all your needs
Services in all cemeteries*



*It is our privilege
to support the
JACKSON DAY DINNER*



EMPIRE

SAVINGS AND LOAN ASSOCIATION

VAN NUYS: (HQ) 6750 Van Nuys Blvd. at Vanowen
PACOIMA: 9100 Woodman Ave. at Nordhoff
LOS ANGELES: 9057 Sunset at Doheny

WELCOME
TO CALIFORNIA

Vice President

Lyndon B. Johnson

from

Congressman Harry R. Sheppard's

33rd CONGRESSIONAL DISTRICT

SAN BERNARDINO COUNTY

Lek von Kaesborg
Julius J. Novack
Robert S. Morris
Theo. G. Krumm
Karl F. King
Arthwell Hayton
John A. Delatore
Robert O. Cooley
Leo Chase
William A. Betterley

TWO FOR ONE

Two familiar brands—recognized by motorists from the great State of Texas to the dynamic State of California. Brands which we try to make synonymous with quality of product, and service to the customer. Quality and service...meaningful too when applied to the character of a man...a man such as Lyndon B. Johnson who, during his Vice Presidency, has proved his quality of statesmanship and has demonstrated his service not only to the citizens of America, but to peoples of the world.

DOUGLAS OIL COMPANY of California, Los Angeles, California
CONTINENTAL OIL COMPANY—Houston, Texas



VERY
BEST
WISHES



BOYAR-KESSLER
INVESTMENT COMPANY



Europa Motor Car Co., Ltd.

9629 LAUREL CANYON BLVD. • NORTH HOLLYWOOD • TRiangle 7-7605 • STate 1-6720

*Fleet Sales • Lease Plan • Small Busses • Station
Wagons • Delivery Vans • Pickup Trucks • Camper Units*



J. Manning Post, *President and Chairman of the Board*



Whale of a Tiger

You're looking down the 84-foot cargo hold of a Flying Tiger Swingtail-44. Among aircarriers, it's the big one. Because it holds so much cargo (33 tons) nothing waits around on the dock. Your shipment moves out right on time. So when you've got a "fastest way" shipment, call Flying Tigers. But please, don't ask for Jonah.

FLYING TIGER LINE



PETE SUMMERS, INC.

A Public Relations Task Force

LOS ANGELES • LONDON • NEW YORK • WASHINGTON

METROPOLITAN DEVELOPMENT CORPORATION



SUBDIVIDERS • BUILDERS

COMMUNITY DEVELOPERS

BUILDERS OF OVER 50,000

RESIDENTIAL UNITS

SINCE 1936

SHOPPING CENTERS

LAKEWOOD CENTER • VALLEY PARK PLAZA

VANOWEN & PLATT • FALLBROOK SQUARE



FALLBROOK SQUARE

The West's Finest Shopping Center

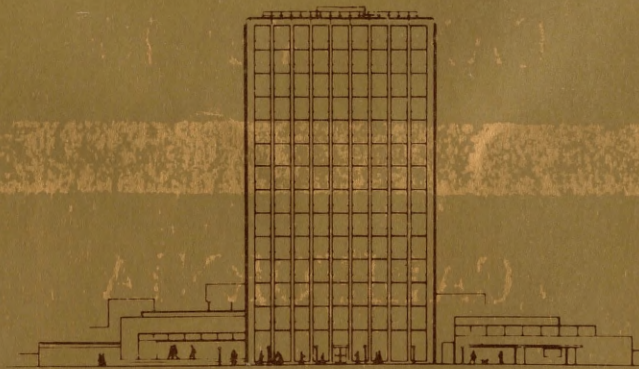
CANOGA PARK

CALIFORNIA



UNIVERSAL CITY STUDIOS

**THE ENTERTAINMENT
CAPITAL OF THE WORLD!**



UNIVERSAL CITY, CALIFORNIA

AMERICA'S LARGEST SENIOR CITIZEN CONCEPT
IS PROUD TO HONOR
VICE PRESIDENT LYNDON B. JOHNSON



Like you, we are in full accord with President Kennedy's concern over the neglect of many of the needs of our Senior Citizens.

Leisure World has already made great strides in helping solve this problem.

THE \$90,000,000 LEISURE WORLD—SEAL BEACH

6470 Co-operative ownership apartments.

Three \$350,000 Clubhouses.

\$560,000 Medical Center (all in home nurse calls, calls to doctor's office and prescription drugs are included in the monthly payment).

2500-seat Amphitheater, a beautiful golf course and swimming pool—all for the enjoyment of the 8000 residents (soon to be 11,000).

THE \$500,000,000 LEISURE WORLD—LAGUNA HILLS

Construction on this vast project on the Santa Ana Freeway is well underway. Sales will begin this fall. 18,000 co-operative ownership apartments on 3600 acres of beautiful Rolling Hills.

Leisure World-Laguna Hills, anticipating a population of 30,000 residents within 5 years, has similar medical and recreational benefits included in the monthly payment PLUS hospitalization.

THE \$250,000 LEISURE WORLD—WALNUT CREEK

This, too, is ready to open for sales.

2100 acres of the fabled Dollar Ranch will have 10,000 apartments.

Anticipating a population of 15,000-18,000 residents, Leisure World-Walnut Creek, will have the same medical and recreational facilities included in the monthly payment PLUS hospitalization.

With three going NOW—and New York, Chicago and Washington, D.C. NEXT—Leisure World is proud to be doing its part towards solving one of America's pressing sociological problems.

ROSS W. CORTESE
Creator of the Leisure World Concept
President of Rossmoor Corporation
Builders of Leisure World

SAM HURWITZ
Vice President and General Counsel
Rossmoor Corporation



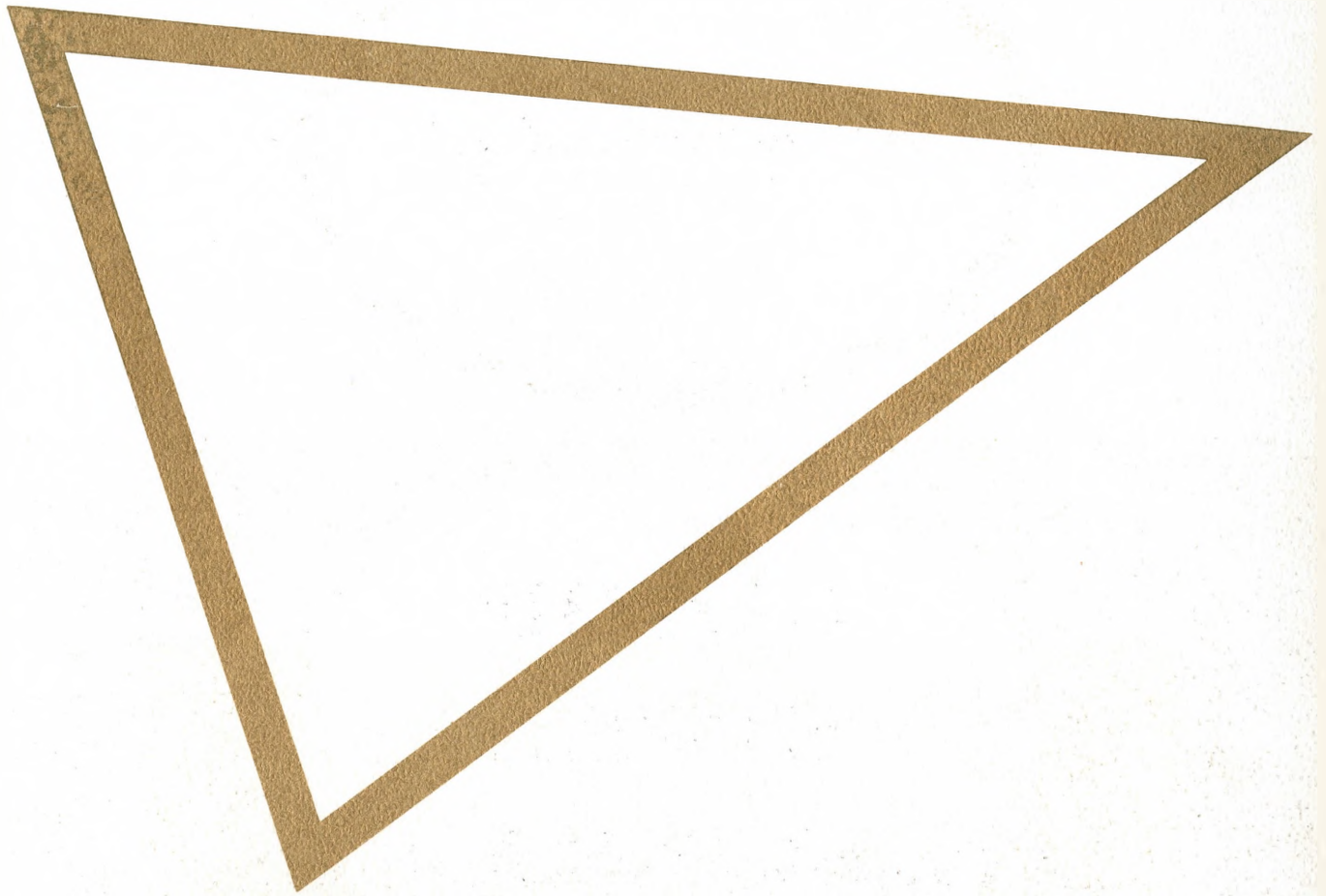
A Company On The Move!

- AN EXPANDING THEATRE CIRCUIT
- MAJOR REAL-ESTATE DEVELOPMENTS
- THEATRE COLOR-VISION — TALARIA —
CLOSED-CIRCUIT, LARGE SCREEN COLOR TV
- CONCERTS, INC.—LIVE STAR ENTERTAINMENT
- MAJOR MOTION PICTURE PRODUCTION
- COMMUNITY ANTENNA SYSTEMS
- MISSION PAK—THE GIFT SUPREME
- MOBILE RENTALS—"INSTANT SPACE"
- MERCHANDISING, VENDING, IN-PLANT FEEDING

NATIONAL GENERAL CORPORATION

"A COMPANY ON THE MOVE"

EUGENE V. KLEIN, President and Chairman of the Board
IRVING H. LEVIN, Executive Vice President
ROBERT W. SELIG, Vice President, Theatre Operations



UNIVERSITY CITY

AMERICA'S GREATEST PLANNED COMMUNITY

453-2930

SAN DIEGO, CALIFORNIA

IRVING J. KAHN, *President*



Compliments of

**GLOBE
STEEL
SUPPLY**

1291

East Sixth Street

Los Angeles,

California

Why Investors From Around The World Look To California...and WORLD SAVINGS

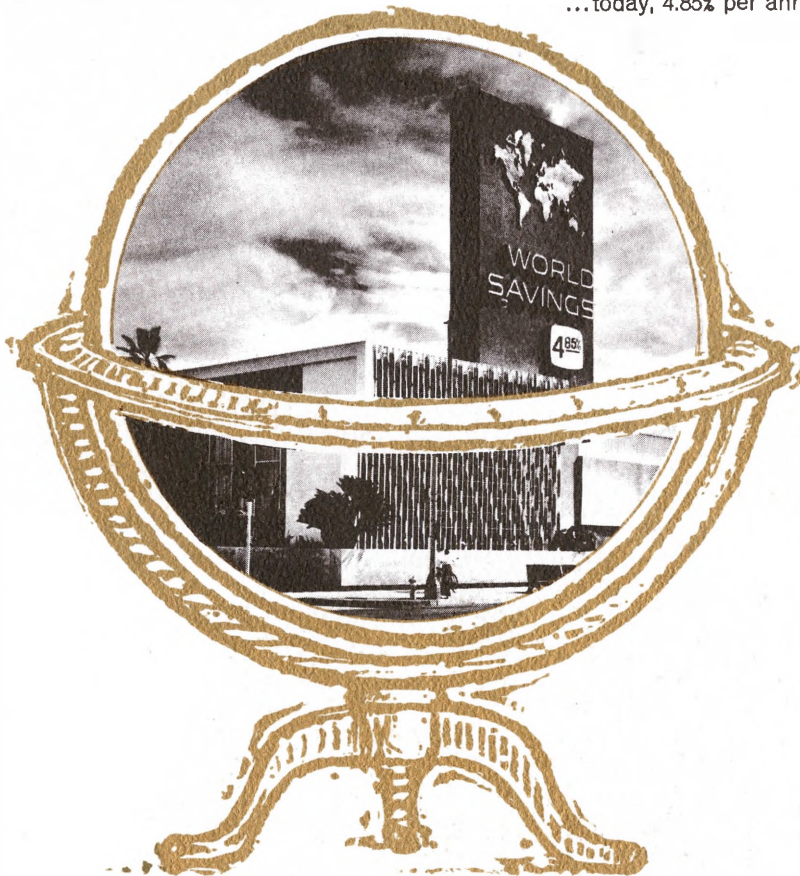
Thousands of investors from around the world look to California...and World Savings... for higher returns on insured savings because they know their money earns more in an area of continuing progress, expansion and stability.

California has these qualities in superabundance. This forward-looking state has become a colossus in a few short decades. Population has more than doubled since 1940. By 1965, California will be the most populous state in the Union. Construction has raced to keep up with the housing needs of the population and a booming industry. As a result, California leads the entire nation in construction activity. Industry of the state is on a giant scale—and, of vital importance to every investor, large or small, *it is well diversified.*

The tremendous expansion and growth of population, construction and industry has created the favorable conditions which make it possible for insured savings in California to receive the highest earnings in the world.

World Savings has consistently been in the forefront of savings institutions paying these highest returns. There are thousands of savings institutions throughout the nation, but none is more strategically located to profit from its investments than World.

The fact that World Savings is centrally located in the biggest home loan market of all, and reinvests its funds in secure home loans, means that it is in a position to earn for you a safe, higher-than-average return on your savings...today, 4.85% per annum.



Louis J. Galen / Chairman Of The Board


WORLD SAVINGS AND LOAN ASSOCIATION **4.85%** Earnings Compounded Daily

Main Office: Long Beach Blvd. at Imperial, Lynwood / Wilshire Office: 1926 Wilshire Blvd., Los Angeles

A savings and loan service in the highest tradition of the industry

SAFETY SAVINGS AND LOAN ASSOCIATION

2638 South Western Avenue • Los Angeles 54, California • RE 5-1041

*Wesley R. Brazier, Director-President / Lovell C. Moore, Director-Senior Vice-President / Mitchell B. Miles,
Director-Secretary / James M. Woods, Director-Treasurer / Judge Bernard S. Jefferson, Director* 



AFFILIATED METAL PRODUCTS

SUPPLIERS OF STAINLESS STEEL

Plate — Sheet — Coil and Strip

COIL CUT TO SIZE & STRETCHER LEVELED

MADISON 6-0121
1313 East Sixth Street
Los Angeles

JOS. L. ALPERSON

- no
- finer
- vodka

Kamchatka

- a
- National
- Distillers
- product



distributed in Southern California by

The Alfred Hart Company

LOS ANGELES • SAN DIEGO • SAN BERNARDINO

100% GRAIN NEUTRAL SPIRITS • DISTRIBUTED BY NATIONAL DISTILLERS PRODUCTS CO.
80 & 100 PROOF • PRODUCT OF U. S. A. • KAMCHATKA COMPANY OF AMERICA, LOS ANGELES, CALIF.

REPUBLIC CORPORATION



9601 WILSHIRE
BOULEVARD,
BEVERLY HILLS

GAFFERS & SATTLER CORPORATION

PIONEER MANUFACTURING CORP.

GENERAL WATER HEATER CORP.

CONSOLIDATED FILM INDUSTRIES

*Now as then...
if civilization is to survive,
we must cultivate the science of human
relationships — the ability of all
peoples, of all kinds, to live together
and work together, in the
same world, at peace.*

Franklin D. Roosevelt

Address Written for Jefferson Day Dinner, April 13, 1945

AMERICAN INSTITUTE OF BUILDING DESIGN

16000 VENTURA BOULEVARD,

ENCINO

VIRGIL W. CASH
President

ROBERT VAN ROECKEL

EDWARD HAGEMAN

ROBERT SHERMAN

LOWELL MILLIGAN

ZEL L. CONN,
Executive Vice President

AN AMAZING NEW BREAKTHROUGH HELPS YOU PLAY THE ORGAN INSTANTLY!

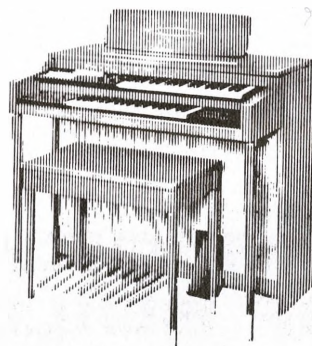


the new exclusive keyboard of the

Thomas Color-Glo KEY-LIGHT ORGAN

Light up your life with the fun, excitement and relaxation of creating your own music. Until now, the satisfaction of playing a musical instrument has been achieved only after years of tedious study. Now, the new and exclusive Thomas Color-Glo Transistor Organ lets you play instantly!

Can you match a color with a color and a letter with another letter? Sure you can... and that's all you need do to make music on the new Thomas Color-Glo Organ! Through the miracle of electronics you and every member of your family can play complete songs with melody, harmony, and bass notes instantly!



Touch the magic switch again and the amazing Color-Glo lighted keys disappear leaving a beautiful spinet organ console that will be the focal point... the most admired piece of furniture in your home. Your colorful music teacher is your secret!

Drop by today and prove to yourself you can play. Start your family on their musical adventure. Demonstrate your musical talent to your friends this weekend!

**NOT A CHORD ORGAN... NOT A SHORT
CUT GADGET... COLOR-GLO SHOWS YOU
THE CORRECT NOTES AND CHORDS TO PLAY**

**YOU CAN OWN A NEW THOMAS
TRANSISTOR ORGAN
FOR AS LITTLE AS \$499⁹⁵**

Thomas

ORGAN COMPANY, 8345 HAYVENHURST AVENUE, SEPULVEDA, CALIFORNIA

Family Savings

& LOAN ASSOCIATION



3683 Crenshaw Boulevard
Los Angeles 16, California
Phone 295-3381



M. Earl Grant, President-Director

Albert E. Hampton, Executive Vice-President
Manager

Member of
FEDERAL HOME LOAN BANK SYSTEM
FEDERAL SAVINGS AND LOAN INSURANCE CORPORATION
UNITED STATES SAVINGS AND LOAN LEAGUE
CALIFORNIA SAVINGS AND LOAN LEAGUE



**ARROW
CHEVROLET**

WELCOMES

VICE PRESIDENT
JOHNSON

TO
LOS ANGELES

*L. F. TIDWELL,
President*

GERSTEN

CONSTRUCTION CO.

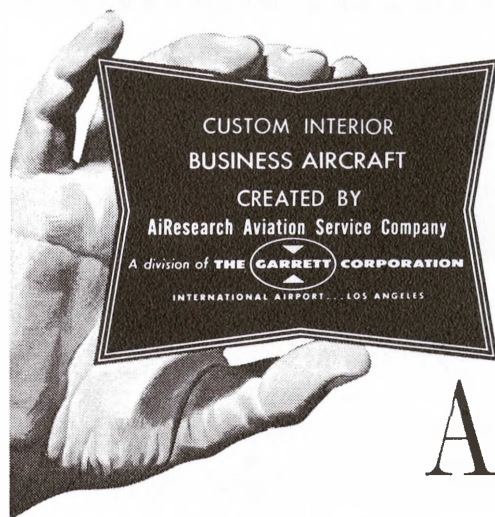
General Contractors

8530 WILSHIRE BOULEVARD

SUITE 600

BEVERLY HILLS, CALIFORNIA

OLympia 2-5203 ★ ★ ★ OLeander 5-7686



Are you unknowingly flying second class in your own aircraft?

Many custom interiors *appear* to be of the highest quality until drawers and doors no longer seem to fit, fabrics begin to work loose or wear thin, colors almost imperceptibly begin to fade, seating and movement inside the aircraft becomes awkward and uncomfortable, and many weaknesses in basic design begin to be noticed.

Beneath the beauty and graciousness of any quality custom interior there must be good basic design. And good basic design requires outstanding engineering of a very specialized nature, fully integrating carefully engineered furniture and fittings into the framework of the aircraft.

AiResearch's extensive leadership and experience in the modification of all types of airframes and aircraft systems insures maximum integration of individualized interiors into the structure of the aircraft. This over-all capability, combined with good basic design, is also of vital importance to the safety and perform-

ance of the aircraft as well as to the beauty, comfort and durability of the interior.

Every AiResearch Aviation Service custom interior is built to retain its high quality for the lifetime of the aircraft. This is possible only because AiResearch employs the most skilled and experienced craftsmen in the industry and uses only the finest materials for the most rugged, lightweight construction throughout.

There is no production line at AiResearch Aviation Service, and no two interiors are alike. Every piece is hand finished by an expert craftsman with a genius for detail. And the internal construction and fitting of each piece is equally exacting. There is no compromise, and nothing is left to chance.

Before *you* should unwittingly decide to fly second class in your own corporate airplane, we urge you to check into the AiResearch Aviation Service Company reputation and facility to see for yourself how the finest interiors in the world are made.



Free illustrated facility brochure available on request.


AIRESEARCH AVIATION SERVICE DIVISION

International Airport, Los Angeles, California/Telephone: 646-2770/Radio UNICOM 123.0 mc



Equitable

SAVINGS AND LOAN
ASSOCIATION



328 LONG BEACH BOULEVARD
LONG BEACH
CALIFORNIA



BRANCH OFFICE:

16804 Bellflower Boulevard
Bellflower, California





CONGRATULATIONS

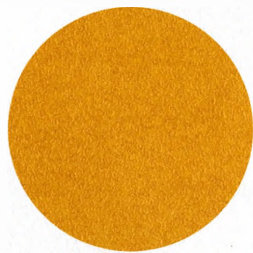
TO

MR. MARK BOYAR

FOR HIS LOYALTY

AND INDUSTRY

TO THE PARTY



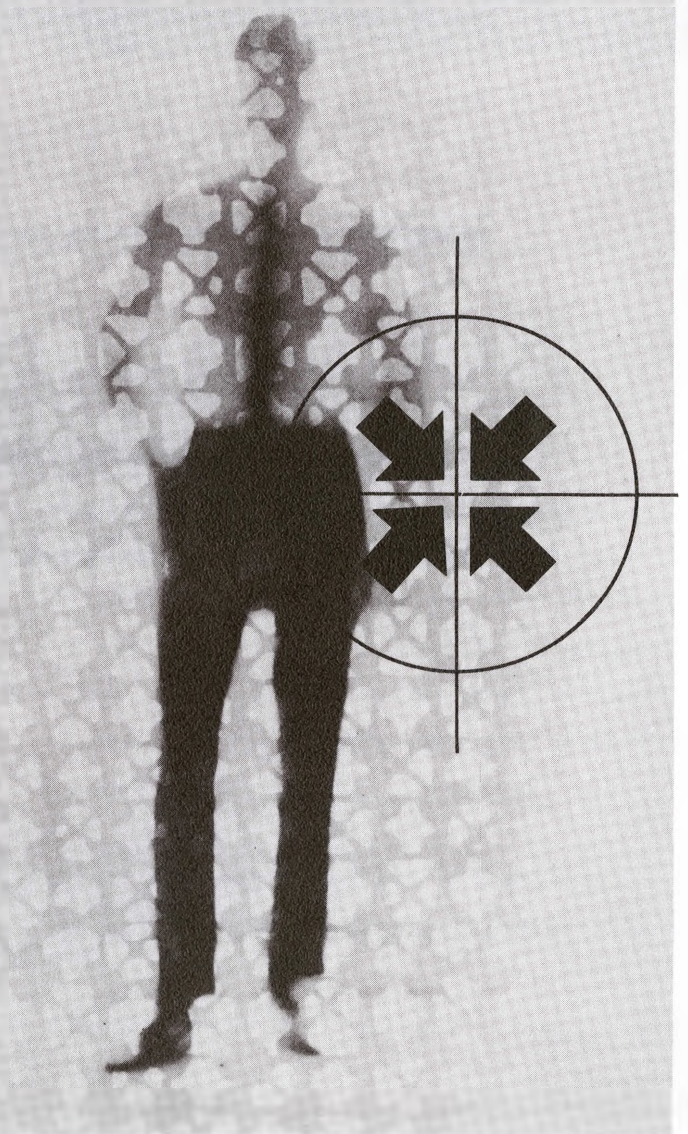
Theodore Cummings

OLD LOG CABIN
Straight Bourbon Whiskey

World's Mildest Bourbon



Science without technology...is learning without significance. Only when the fragments of many sciences are skillfully woven through technology into need-satisfying goods and services does scientific knowledge assume meaning, purpose, utility. Litton Industries is scientific/technological man, competent in a profusion of disciplines, with a responsive sensitivity to free society's need for advanced military and commercial systems. **Litton Industries, Inc.** ☐ Beverly Hills, California





**FOR YOUR NEXT BUILDING PROJECT,
SPECIFY HARCRAFT BRASS**

Single-lever faucets, available from your plumbing distributor
for bathroom and kitchen installations.

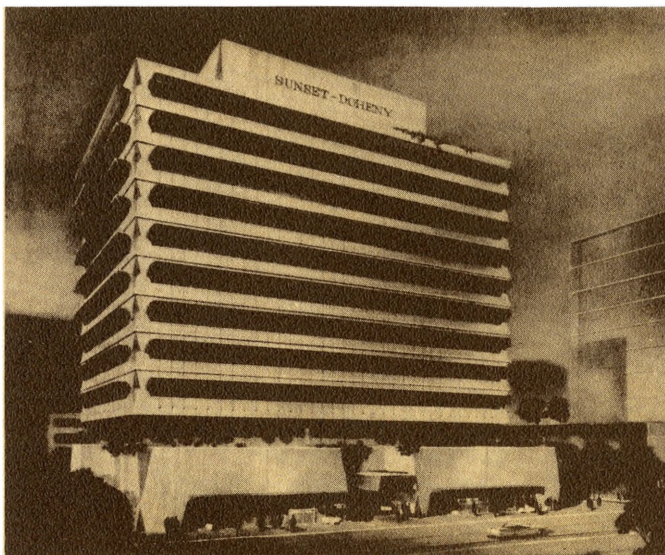
THE BEST THING NEXT TO WATER

HARCRAFT BRASS

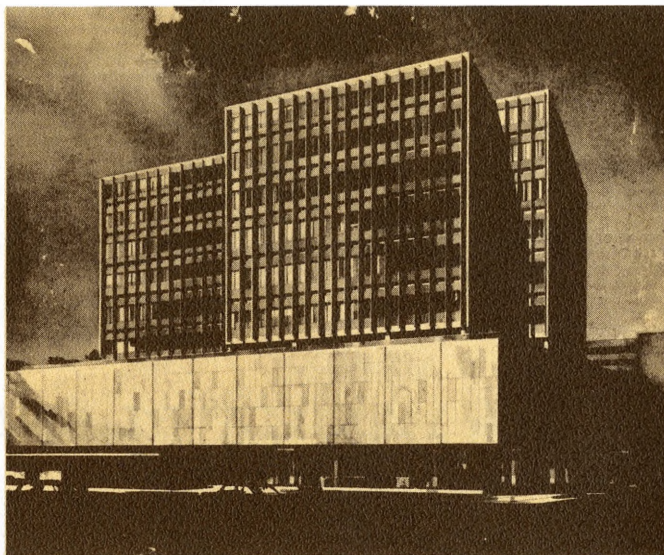
General Offices: Torrance, California



NOW LEASING! PRESTIGE OFFICE LOCATIONS!



SUNSET-DOHENY WEST BUILDING • 9255 Sunset Boulevard, Los Angeles



WILSHIRE-LA CIENEGA BUILDING • 8500 Wilshire Boulevard, Beverly Hills

These deluxe new Buckeye buildings — only minutes from home!

The Sunset-Doheny West Building is the most luxurious, Top-of-the-Town location. Suites are only minutes from commercial, entertainment and residential centers of Beverly Hills, Hollywood, and West Los Angeles. Your neighbor-tenants include the brightest personalities in the entertainment and business world.

The Wilshire-La Cienega Building is a deluxe office building situated in the heart of La Cienega's famed restaurant row. You'll find prestige office space designed for your comfort, convenience and operating efficiency. Lease a single, smartly-appointed suite or an entire floor!

Buckeye has other prime West-side locations. Write for free folder which describes, illustrates all 26 ultra-modern Buckeye buildings — or call OL 2-1411 today for full information.

BUCKEYE REALTY & MANAGEMENT CORPORATION
BEVERLY HILLS

MALIBU CANYON

the FAMILY PLANNED COMMUNITY

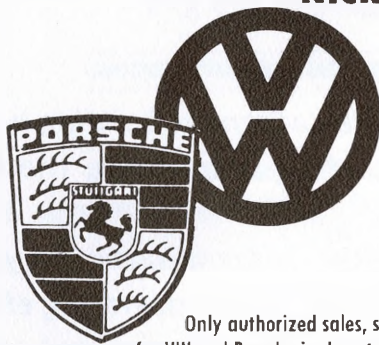


ALLAN
BOYAR — developers —
Corporation

Salute to **LYNDON B. JOHNSON**

VICE PRESIDENT OF THE UNITED STATES

NICKOLAS N. SHAMMAS, president



Only authorized sales, service and parts
for VW and Porsche in downtown Los Angeles.

**DOWNTOWN
L.A. IMPORTS, INC.**

1905 So. Figueroa (at Washington) •

In the heart of downtown L.A.

RI 8-7231



First in sales
West of Chicago
regardless of make
or model sold!



Giant **FELIX
CHEVROLET**

3330 So. Figueroa (at Jefferson)

In the heart of downtown L.A.

RI 8-6141

LEASE FROM THE GIANT! • **GIANT LEASING** • lease any make or model, car or truck . . . one or a fleet!

TAVA LANES

Bowling—Gourmet Restaurant and
Cocktail Lounge

**TAVAGLIONE
ENTERPRISES**

Apartment Houses—Housing Developments

**TAVAGLIONE
ASSOCIATES**

Our excellent sales force is ready to assist
you in all types of Real Estate Transactions—
Ranches, Industrial Property and all types
of Homes and General Real Estate.

**TAVAGLIONE
BROTHERS**

Dominic Tavaglione, President





ALLEN, O'HARA & TATUM, INC.

GENERAL CONTRACTORS • 1900 EAST 'A' ST., ONTARIO, CALIF. 91764 • PHONE (714) 986-8891

Selected
Equities
Management
Corporation



*Washington, D.C.
Menlo Park, California
Los Angeles, California*

*Management Consultants
Victor Valley Shopping Center
Victorville, California
CHapel 5-2017*

*"A single good government is a
blessing to the whole earth."*

THOMAS JEFFERSON



GreenTree

640 ACRE RESIDENTIAL/RESORT COMMUNITY

• Green Tree Golf and Tennis Club • 128 room Green
Tree Inn • 18-hole, 7,000 yard golf course • Golf course
homes and townhouses • Green Tree shopping center

VICTORVILLE, CALIFORNIA CHapel 5-3461 TWX 714-241-7128

A QUALITY PROJECT OF THE
TATUM CONSTRUCTION CORPORATION

JOSEPH
R.
GRILLO



South Gate, California

Best Wishes

MICHAEL J. RUSSO, INC.

PENINSULA SAVINGS

AND LOAN ASSOCIATION

SAN MATEO, CALIFORNIA

*Compliments
of*

M. C. NOTTINGHAM CO.

MARK C. NOTTINGHAM, *President*

• • • • •
and ZEL L. CONN

ELECTRIC MOTOR ENGINEERING

INC.

MARTIN KELLNER
President

The West's First Address!



ONE *Wilshire*

"Where Wilshire Boulevard Begins"

The 30-story One Wilshire Building will be situated "where Wilshire Boulevard begins," at the core of the West's business activity. This location can never again be duplicated in Los Angeles . . . truly a prestige building offering every modern convenience.

An S. Jon Kreedman & Co. Project.
Architects: Skidmore, Owings & Merrill.

One Wilshire • Wilshire at Grand
Los Angeles, Calif.

A DEVELOPMENT BY
S. JON KREEDMAN & CO.



an investment building firm

*...traditional principles
can be made to be exciting,
new and progressive.*



GUARDIAN BANK

7014 Sunset Blvd., Hollywood
HO 6-7611

Sunset just east of La Brea

Nikola's
**RESTAURANT
AND
STEAK HOUSE**

Phone MAdison 8-8005
1449 Sunset Boulevard
Los Angeles 26, Calif.

Your Hosts: Walter and Pete Rasic



★ ★ ★ ★ ★ ★ ★ ★ ★ ★ ★ ★ ★ ★ ★ ★
✕ LOS ANGELES ✕
✕ ✕ ✕ FINANCE ✕ ✕ ✕
✕ ASSOCIATION ✕
★ ★ ★ ★ ★ ★ ★ ★ ★ ★ ★ ★ ★ ★ ★ ★

Compliments of
BARRY J. RICHARDS
~~~~~

Wherever in the world
you travel — you're better off
with Pan Am — world's most
experienced airline!



See your Pan Am Travel Agent or call

Pan Am at MADison 9-3292

In Los Angeles:

6th & Grand & International Airport

In Hollywood: Roosevelt Hotel

In Beverly Hills: Beverly Wilshire Hotel



SALUTE

TO THE VICE PRESIDENT
OF THE UNITED STATES

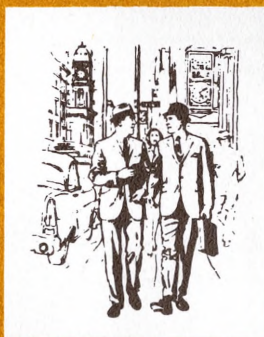


CROWN CONSTRUCTION COMPANY

LOS ANGELES

OUR RECORD GROWTH... from a single California company to a group of companies serving 48 states, Canada and Great Britain has been due to our ability to meet the insurance needs of an electronic age. Today Beneficial is known throughout the industry as the

"NATION'S MOST PROGRESSIVE INSURANCE GROUP"



Your Best Idea . . . and our know-how of proven merchandising techniques are converted into profits for Agents and Brokers!

If you have an IDEA you would like to see get off the ground — contact us!

Our credo is, "the better we meet the changing needs of the American public, the better we serve our policyowners, our agents — and ourselves!"



Beneficial now offers Multiple Line Protection

LIFE • HEALTH • FIRE • CASUALTY • SPECIAL RISKS



Service Mark

BENEFICIAL STANDARD LIFE INSURANCE COMPANY
756 South Spring Street, Los Angeles 14, California • MADison 6-6351

BENEFICIAL FIRE & CASUALTY INSURANCE COMPANY
756 South Spring Street, Los Angeles 14, California • MADison 6-6351

FIDELITY INTERSTATE LIFE INSURANCE COMPANY
42 South 15th Street, Philadelphia 2, Pennsylvania • LOcust 3-6900

BRITISH PACIFIC LIFE INSURANCE COMPANY
1090 Granville Street, Vancouver 2, B.C., Canada • MUtual 4-2554

VERMONT ACCIDENT INSURANCE COMPANY
33 Cottage Street, Rutland, Vermont • PROspect 5-5529

BENEFICIAL NATIONAL LIFE INSURANCE COMPANY
122 East 42nd Street, New York, New York • MUrray Hill 7-5757

HOME OFFICE: LOS ANGELES, CALIFORNIA • EASTERN HEAD OFFICE: PHILADELPHIA, PENNSYLVANIA

FAIRFIELD

SERVICE

COMPANY

WILLIAM G. HAGEN
President

1254 W. MANCHESTER
LOS ANGELES 44

Compliments of

.....
**TRANS CALIFORNIA
AIRLINES, INC.**
.....

Best Wishes

SUPERWALL
I N C O R P O R A T E D

Headquartered in California

to serve the needs

throughout the nation



BALBOA INSURANCE COMPANY
818 West Seventh, Los Angeles 17

Specialists in custom-built
insurance programs for Banks,
Finance and Mortgage Companies

KARL'S SHOE STORES

COMPLIMENTS OF

**ACCEPTANCE REALTY &
MORTGAGE COMPANY**

BEVERLY HILLS, CALIFORNIA ■

From a Friend



MAIN OFFICE:

5200 East Second Street, Long Beach 3, California
Telephone 434-3451

PLAZA BRANCH:

6300 East Spring Street, Long Beach 15, California
Telephone 421-8931

WILSHIRE BRANCH:

2406 Wilshire Blvd. at Parkview, Los Angeles 57, Calif.
Telephone 385-4116

It's good business to

"CALL CAL CARTAGE"

Angelus 1-1121

*Terminals located at Los Angeles,
San Diego, and Oakland.*



NEIL J. CURRY
President

For the
**BEST
PONTIAC
DEAL**

See

A. E. ENGLAND *in Hollywood*

6161 HOLLYWOOD BLVD., HOLLYWOOD

P.S. Immediate delivery on many models!

DILLER-ENCINO CO.

Builders and Developers

8549 WILSHIRE BOULEVARD
BEVERLY HILLS, CALIFORNIA

● ● ● THE WORLD'S FINEST
WRITING BALL POINT PENS

Fisher Pen Company

VAN NUYS, CALIFORNIA

"OFFICE SPACE IN CIVIC CENTER
AND THE FINANCIAL DISTRICT"

354 South Spring Street, Co.

Call MA 6-7609

GENERAL PARTNERS: SAMUEL K. FRESHMAN • PHILIP F. MARANTZ • DAVID COMSKY

Best Wishes!

EL CAMPO, INC.

MILLER • GINDLING • MILLER



A WELCOME TO
LYNDON JOHNSON
FROM A FRIEND

Compliments of
H & B American Corporation
Beverly Hills



BEST WISHES FROM
HUENEME BAY

Jan and Joe Bolker

WELCOME
TO LOS
ANGELES

Wilshire
Triangle Center

West Valley
Medical Center

LANDMARKS *under construction by*
Robert J. Felixson • Irwin Daniels • Harold Held

Best Wishes to a Distinguished Statesman

▶▶▶▶▶ LYNDON B. JOHNSON ◀◀◀◀◀

OSTROW ENTERPRISES, INC.

WELCOME

Lyndon B. Johnson

■ ■ ACME HARDWARE CO.

FOR
Happy Living
in the
CALIFORNIA
Sun...



HESPERIA . . .

**. . . SALTON
CITY**



HOLLY CORPORATION

Marcus Hickerson
President

Lorne B. Pratt,
Vice-President
Land Development Division



Greetings from

NEW FASHION CLEANERS, Inc.

3626 South Western Avenue

Los Angeles, California

PAUL DEAN

President

JACK WADA

Vice-President

RUSH DRUG STORE

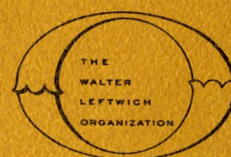
201 West Seventh Street

Los Angeles, California

MORRIS NIEMEROW

President

CREATED AND PRODUCED BY



Advertising

ART DIRECTION
MODERN/ARTS