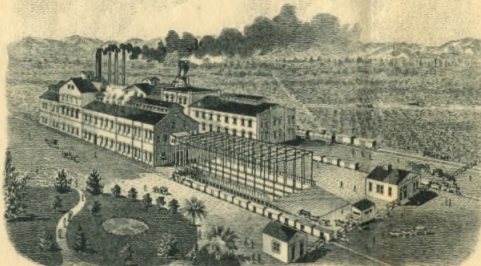


C. H. Phillips, President

C. H. Phillips Jr., Vice Pres.

C. W. Gates, Secy & Treas.



Chino Ranch Company

(a Corporation)

CAPITAL \$ 3,000,000??

CHINO RANCH 41,073 ACRES.
20,000 ACRES BEET, ALFALFA, CORN,
POTATO, WHEAT, OATS & BARLEY LANDS.
10,000 ACRES, ORANGE, LEMON, OLIVE,
WALNUT AND DECIDUOUS FRUIT LANDS.
11,000 ACRES CHOICE DAIRY LANDS.

*The greatest Beet Sugar industry in the United States.
The largest yield in tons per acre and the highest per-
centage of sugar per ton in the world.*

Address: *Chino Ranch Co.
Chino, California.*

*Los Angeles Office:
404 South Broadway,
(Chamber of Commerce Bldg.)*

CHINO VALLEY RAILROAD.

LOS ANGELES LITHOGRAPHIC CO.

Chino, California.

Dec. 17, 1895.

MR. AH LOUIS,

San Luis Obispo, Cal.

Dear Sir:-

Your favor of December 11th is received.

I will instruct John to pay you as fast as he can out of any funds he may have; also to make out a statement of your account. I ordered it done before I left San Luis, and supposed it had been attended to. Times are very hard there, and it seems almost impossible to get money. They are a little better here, but it is quite hard to make collections, even here. However, we will do our very best we can for you.

Very truly yours,

Wm. Sandercock.

All Correspondence relating to the business of the Ranch should be addressed to CHINO RANCH COMPANY, CHINO, CAL.