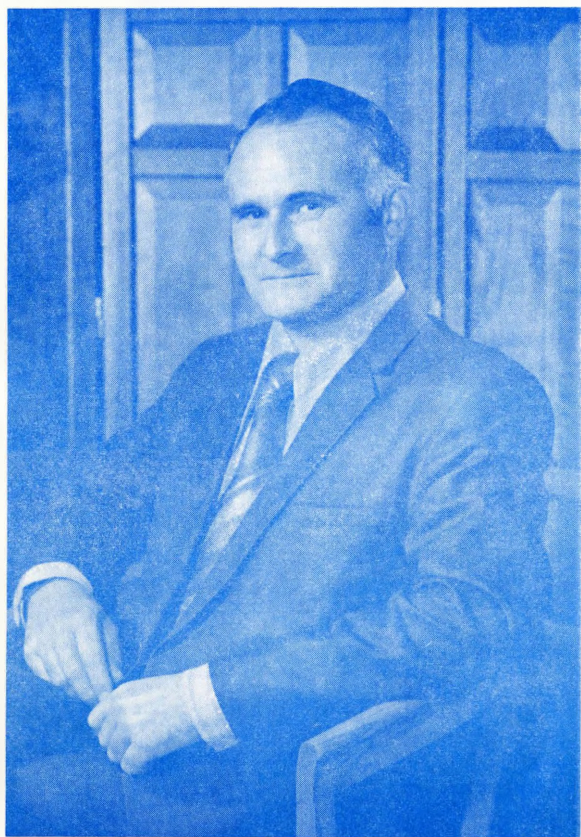


elect

WARREN CHURCH



STATE BOARD
OF EQUALIZATION

DEMOCRAT

ELECTION, JUNE 4, 1974

IT'S TIME FOR A
FRESH LOOK AT.....

- * Utility valuations for tax purposes
- * Methods of arriving at county assessed ratios
- * Keeping in touch with the district on equalization matters

FOR---

Alert representation for the people

Energetic service

Thoughtful conduct of your affairs

.....IT'S
Warren Church
State Board of Equalization

Help---

by sending in your \$ _____

NAME _____

ADDRESS _____

CITY _____, ZIP _____

Send to:

Church for Board of
Equalization Committee
PO Box 6184
Salinas, California 93901

Printing labor donated by
green leaf alternative press
Pacific Grove, Ca.

WARREN CHURCH

An Effective Public Official

- * Third Term Supervisor (Monterey County) who has won big each time
- * Chairman, Monterey - Santa Cruz Unified Air Pollution Control District
- * Member, Central Coast Regional Coastal Zone Conservation Commission
- * Former member, State Regional Water Quality Control Board
- * Experienced as a teacher, and agriculturist
- * Korean War Veteran
- * B.S. & M.A. degrees, Cal Poly, Social Sciences - Education



A MAN of ACTION !

WARREN CHURCH

DEMOCRAT

IT'S TIME FOR A CHANGE. . . .

THINGS ARE DIFFERENT IN 1974
THAN WHEN THE INCUMBENT
WAS ELECTED IN 1938.



COUNTIES FIRST EQUALIZATION DISTRICT

- * AMADOR
- * ALPINE
- * EL DORADO
- * CALAVERAS
- * INYO
- * LOS ANGELES (Northern & Eastern)
- * MADERA
- * MARIPOSA
- * MERCED
- * MONO
- * MONTEREY
- * PLACER
- * SAN BENITO
- * SAN FRANCISCO
- * SAN LUIS OBISPO
- * SAN MATEO
- * SANTA BARBARA
- * SANTA CRUZ
- * STANISLAUS
- * TUOLUMNE
- * VENTURA