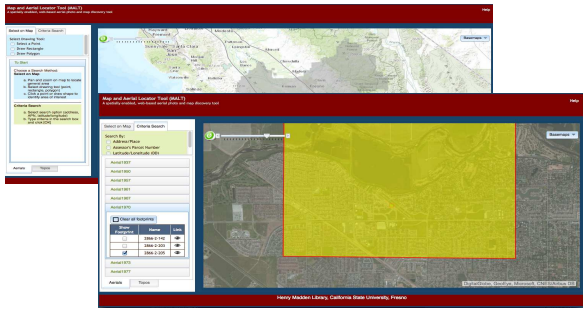


# Map and Aerial Locator Tool

malt.library.fresnostate.edu

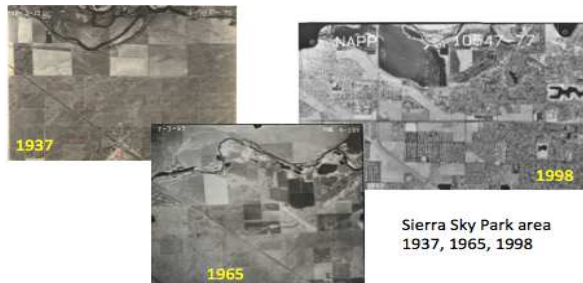
Find your area of interest on the map:

- Click a point, draw a rectangle or polygon, or
- Enter an address, parcel number, or coordinates.

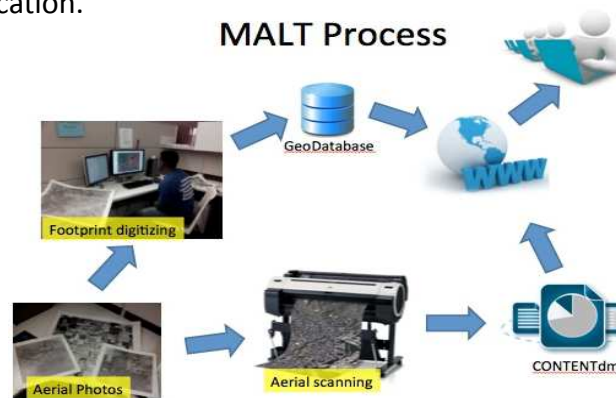


View “footprints” of photos or maps in your area.

Follow links to scans of the aerial photo or map:

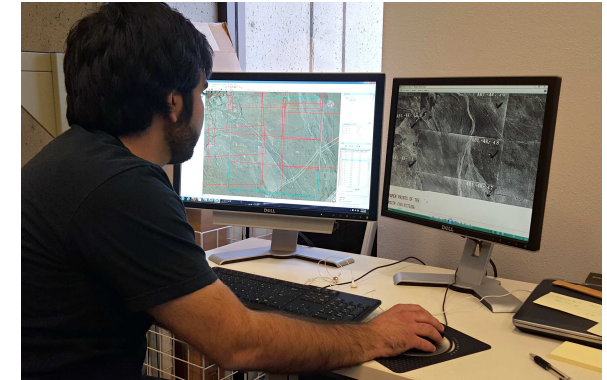


The Map and Aerial Locator Tool (MALT) was developed by the Madden Library to facilitate discovery of and access to maps and aerial photographs. Rather than combing through many separate indexes to identify and request needed items, use MALT to choose a location on a map and quickly view maps and aerial photos for that location.



Material to be included in MALT are scanned and made available through CONTENTdm, the library's Digitized Collections platform. Separately, geographic information system (GIS) software is used to describe the area covered by each item and make this information searchable.

MALT began with mostly Fresno County content, but is expanding with material from partners statewide.



Student assistant Vincent Lazar locates scanned photos on the map, in a process called “footprinting.”

## MALT Team

### Madden Library, Fresno State

Carol Doyle  
David Drexler  
Renaldo Gjoshe  
Maria Peña  
Dr. Xiaoming Yang

### California State University, Chico

Dr. Patrick Newell

### Cal Poly, San Luis Obispo

Jeanine Scaramozzino  
Russ White